

District I
1625 N. French Dr., Hobbs, NM 88240
Phone: (575) 393-6161 Fax: (575) 393-0720
District II
811 S. First St., Artesia, NM 88210
Phone: (575) 748-1283 Fax: (575) 748-9720
District III
1000 Rio Brazos Road, Aztec, NM 87410
Phone: (505) 334-6178 Fax: (505) 334-6170
District IV
1220 S. St. Francis Dr., Santa Fe, NM 87505
Phone: (505) 476-3460 Fax: (505) 476-3462

State of New Mexico
Energy, Minerals & Natural Resources Department
OIL CONSERVATION DIVISION
1220 South St. Francis Dr.
Santa Fe, NM 87505
DISTRICT I ARTESIA O.C.D.

Form C-102
Revised August 1, 2011
Submit one copy to appropriate
District Office

☒ AMENDED REPORT

ACTUAL AS-DRILLED PLAT

WELL LOCATION AND ACREAGE DEDICATION PLAT

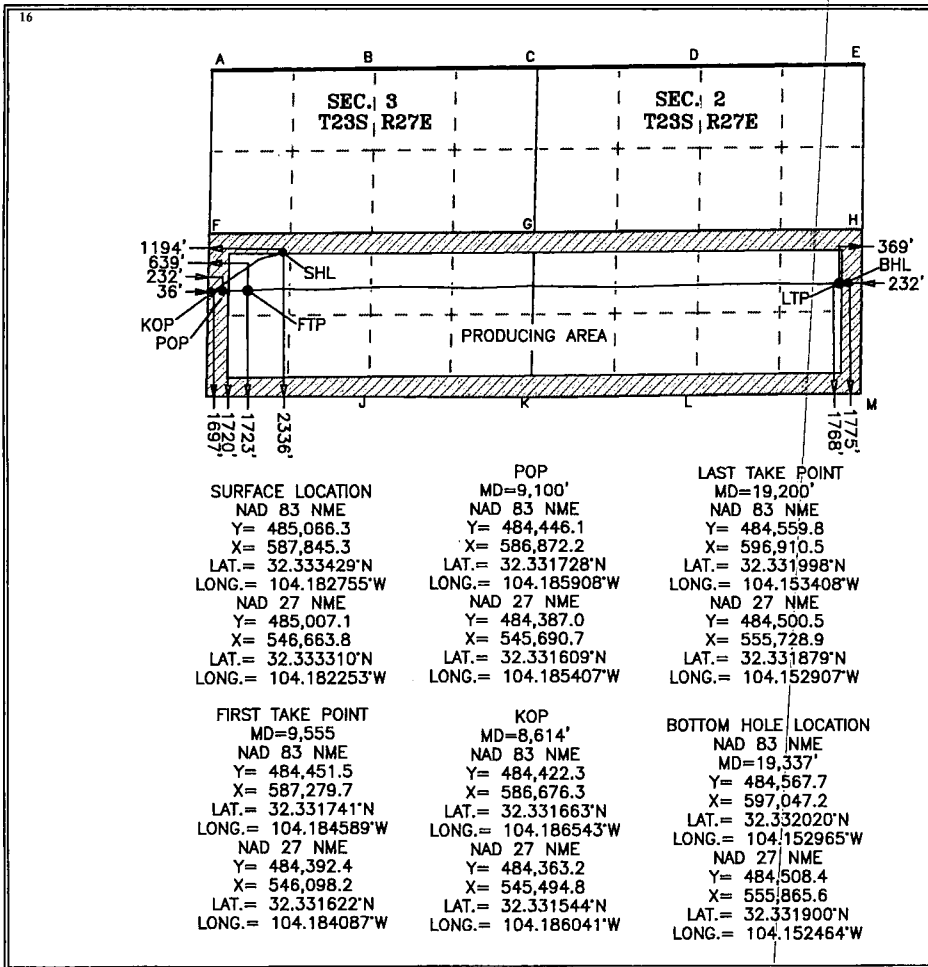
¹ API Number 30-015-45690		² Pool Code 98220		³ Pool Name PURPLE SAGE WOLFCAMP GAS POOL	
⁴ Property Code 324956		⁵ Property Name DALMATIAN 3-2-23-27 FEE			⁶ Well Number 411H
⁷ OGRID No. 264289		⁸ Operator Name WPX ENERGY PERMIAN, LLC			⁹ Elevation 3,112'

¹⁰ Surface Location									
UL or lot no.	Section	Township	Range	Lot Idn	Feet from the	North/South line	Feet from the	East/West line	County
L	3	23 S	27 E		2,336	SOUTH	1,194	WEST	EDDY

¹¹ Bottom Hole Location If Different From Surface									
UL or lot no.	Section	Township	Range	Lot Idn	Feet from the	North/South line	Feet from the	East/West line	County
I	2	23 S	27 E		1,775	SOUTH	232	EAST	EDDY

¹² Dedicated Acres 640 AC S/2	¹³ Joint or Infill	¹⁴ Consolidation Code	¹⁵ Order No.
---	-------------------------------	----------------------------------	-------------------------

No allowable will be assigned to this completion until all interests have been consolidated or a non-standard unit has been approved by the division.



17 OPERATOR CERTIFICATION
I hereby certify that the information contained herein is true and complete to the best of my knowledge and belief, and that this organization either owns a working interest or unleased mineral interest in the land including the proposed bottom hole location or has a right to drill this well at this location pursuant to a contract with an owner of such a mineral or working interest, or to a voluntary pooling agreement or a compulsory pooling order heretofore entered by the division.

Dana Thompson 12-04-2019
Signature Date

Dana Thompson
Printed Name

dana.thompson@wpxenergy.com
E-mail Address

18 SURVEYOR CERTIFICATION
I hereby certify that the well location shown on this plat was plotted from field notes of actual surveys made by me or under my supervision, and that the same is true and correct to the best of my belief.

12-02-2019
Date of Survey

Signature and Seal of Professional Surveyor:

MARK DILLON HARP
NEW MEXICO
23786
PROFESSIONAL SURVEYOR

Mark Dillon Harp
Certificate Number RR 2018041046

RECEIVED

DEC 19 2019

DISTRICT II ARTESIA O.C.D.

Intent ☐ As Drilled ☒

API # 30-015-45690		
Operator Name: WPX ENERGY PERMIAN, LLC	Property Name: DALMATIAN 3-2-23-27 FEE	Well Number 411H

Kick Off Point (KOP)

UL L	Section 03	Township 23S	Range 26E	Lot	Feet 36	From N/S WEST	Feet 1697	From E/W SOUTH	County EDDY
Latitude 32.331663°N					Longitude 104.186543°W			NAD 83 NME	

First Take Point (FTP)

UL L	Section 03	Township 23S	Range 26E	Lot	Feet 639	From N/S WEST	Feet 1723	From E/W SOUTH	County EDDY
Latitude 32.331741°N					Longitude 104.184589°W			NAD 83 NME	

Last Take Point (LTP)

UL I	Section 02	Township 23S	Range 27E	Lot	Feet 1768	From N/S SOUTH	Feet 369	From E/W WEST	County EDDY
Latitude 32.331998° N					Longitude 104.153408° W			NAD 83 NME	

Is this well the defining well for the Horizontal Spacing Unit?

☒

Is this well an infill well?

☒

If infill is yes please provide API if available, Operator Name and well number for Defining well for Horizontal Spacing Unit.

API #		
Operator Name:	Property Name:	Well Number

KZ 06/29/2018