

RECEIVED

District I  
1625 N. French Dr., Hobbs, NM 88240  
Phone: (575) 393-6161 Fax: (575) 393-0720  
District II  
811 S. First St., Artesia, NM 88210  
Phone: (575) 748-1283 Fax: (575) 748-9720  
District III  
1000 Rio Brazos Road, Aztec, NM 87410  
Phone: (505) 334-6178 Fax: (505) 334-6170  
District IV  
1220 S. St. Francis Dr., Santa Fe, NM 87505  
Phone: (505) 476-3460 Fax: (505) 476-3462

State of New Mexico  
Energy, Minerals & Natural Resources Department  
OIL CONSERVATION DIVISION  
1220 South St. Francis Dr.  
Santa Fe, NM 87505

Form C-102  
Revised August 1, 2011  
Submit one copy to appropriate  
District Office  
 AMENDED REPORT

WELL LOCATION AND ACREAGE DEDICATION PLAT

Table with 3 main sections: 1 API Number (30-015-46655), 2 Pool Code (98220), 3 Pool Name (Purple Sage; Wolfcamp), 4 Property Code (325469), 5 Property Name (POKER LAKE UNIT 17 TWR), 6 Well Number (106H), 7 OGRID No. (260737, 373075), 8 Operator Name (XTO PERMIAN OPERATING, LLC.), 9 Elevation (3,519')

10 Surface Location table with columns: UL or lot no. (B), Section (20), Township (24 S), Range (31 E), Lot Idn, Feet from the (40), North/South line (NORTH), Feet from the (1,613), East/West line (EAST), County (EDDY)

11 Bottom Hole Location If Different From Surface

Table with columns: UL or lot no. (G), Section (32), Township (24 S), Range (31 E), Lot Idn, Feet from the (2,440), North/South line (NORTH), Feet from the (1,655), East/West line (EAST), County (EDDY)

12 Dedicated Acres (800), 13 Joint or Infill, 14 Consolidation Code, 15 Order No.

No allowable will be assigned to this completion until all interests have been consolidated or a non-standard unit has been approved by the division.

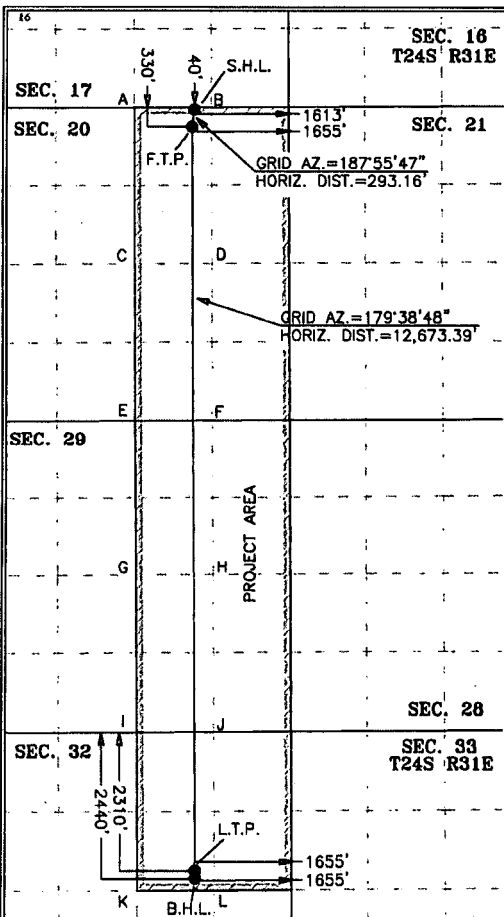


Table with 4 columns: GEODETTIC COORDINATES NAD 27 NME SURFACE LOCATION, GEODETTIC COORDINATES NAD 83 NME SURFACE LOCATION, FIRST TAKE POINT NAD 27 NME, FIRST TAKE POINT NAD 83 NME. Includes Y, X, LAT., and LONG. values for points A through L.

CORNER COORDINATES TABLE NAD 27 NME. Table with 2 columns: Point (A-L), Y, X coordinates.

CORNER COORDINATES TABLE NAD 83 NME. Table with 2 columns: Point (A-L), Y, X coordinates.

Table with 4 columns: LAST TAKE POINT NAD 27 NME, LAST TAKE POINT NAD 83 NME, BOTTOM HOLE LOCATION NAD 27 NME, BOTTOM HOLE LOCATION NAD 83 NME. Includes Y, X, LAT., and LONG. values.

17 OPERATOR CERTIFICATION  
I hereby certify that the information contained herein is true and complete to the best of my knowledge and belief, and that this organization either owns a working interest or unleased mineral interest in the land including the proposed bottom hole location or has a right to drill this well at this location pursuant to a contract with an owner of such a mineral or working interest, or to a voluntary pooling agreement or a compulsory pooling order heretofore entered by the division.  
Signature: Kelly Kardos  
Date: 6/18/18  
Printed Name: Kelly Kardos  
E-mail Address: kelly\_kardos@xtoenergy.com

18 SURVEYOR CERTIFICATION  
I hereby certify that the well location shown on this plat was plotted from field notes of actual surveys made by me or under my supervision, and that the same is true and correct to the best of my belief.  
Date of Survey: 05-15-2018  
Signature and Seal of Professional Surveyor: Mark Dillon Harp  
Professional Surveyor: MARK DILLON HARP 23786  
Certificate Number: AI/AW 2018010208

RWP 1-28-2020

RECEIVED

JAN 22 2020

EMNRD-OCD ARTESIA

Intent  As Drilled

API #

Operator Name: XTO PERMIAN OPERATING, LLC	Property Name: POKER LAKE UNIT 17 TWR	Well Number 106H
--	--	---------------------

Kick Off Point (KOP)

UL B	Section 20	Township 24S	Range 31E	Lot	Feet 40	From N/S NORTH	Feet 1613	From E/W EAST	County EDDY
Latitude 32.209970					Longitude -103.796509			NAD 83	

First Take Point (FTP)

UL B	Section 20	Township 24S	Range 31E	Lot	Feet 330	From N/S NORTH	Feet 1655	From E/W EAST	County EDDY
Latitude 32.209172					Longitude -103.796645			NAD 83	

Last Take Point (LTP)

UL G	Section 32	Township 24S	Range 31E	Lot	Feet 330	From N/S SOUTH	Feet 1655	From E/W EAST	County EDDY
Latitude 32.174693					Longitude -103.796597			NAD 83	

Is this well the defining well for the Horizontal Spacing Unit?  N

Is this well an infill well?  Y

If infill is yes please provide API if available, Operator Name and well number for Defining well for Horizontal Spacing Unit.

API #

Operator Name: XTO PERMIAN OPERATING, LLC	Property Name: POKER LAKE UNIT 17 TWR	Well Number 127H
--	--	---------------------

KZ 06/29/2018