

RECEIVED

DISTRICT I  
1825 N. FRENCH DR., HOBBS, NM 80240  
Phone: (575) 393-8181 Fax: (575) 393-0720

DISTRICT II  
811 S. FIRST ST., ARTESIA, NM 88210  
Phone: (575) 748-1283 Fax: (575) 748-0720

DISTRICT III  
1000 RIO BRAZOS RD., AZTEC, NM 87410  
Phone: (505) 334-8178 Fax: (505) 334-8170

DISTRICT IV  
1220 S. ST. FRANCIS DR., SANTA FE, NM 87505  
Phone: (505) 476-3460 Fax: (505) 476-3462

State of New Mexico  
Energy, Minerals & Natural Resources Department  
**OIL CONSERVATION DIVISION**  
1220 SOUTH ST. FRANCIS DR.  
Santa Fe, New Mexico 87505

JAN 8 1 2020

Form C-102

Revised August 1, 2011

EMNRD-OCD ARTESIA

appropriate District Office

AMENDED REPORT

## WELL LOCATION AND ACREAGE DEDICATION PLAT

API Number <b>30-019-4678</b>	Pool Code <b>10380</b>	Pool Name <b>Cass Draw</b> <i>Whitrat Bone Spring</i>
Property Code <b>326187</b>	Property Name <b>PRECIOUS 30_18 FEDERAL COM</b>	Well Number <b>22H</b>
OGRID No. <b>16696</b>	Operator Name <b>OXY USA INC.</b>	Elevation <b>3346.2'</b>

## Surface Location

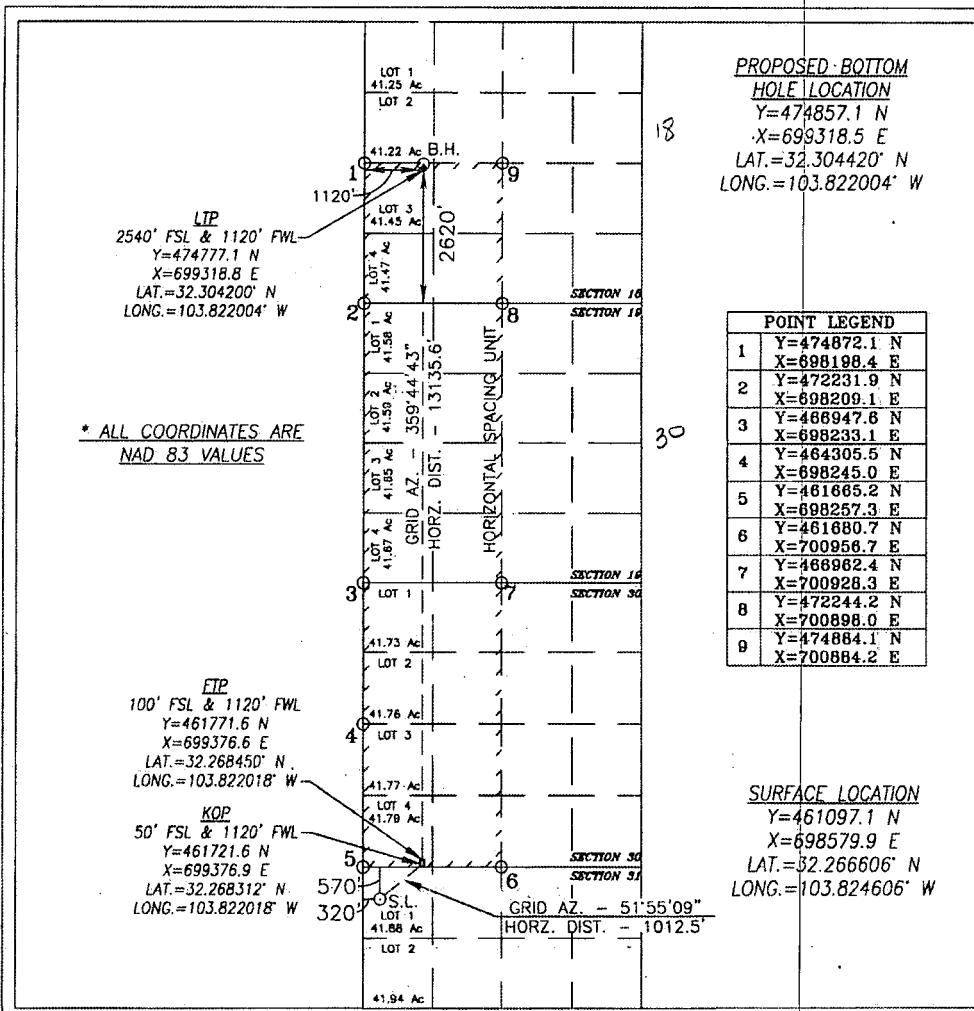
UL or lot No.	Section	Township	Range	Lot Idn	Feet from the	North/South line	Feet from the	East/West line	County
1	31	23-S	31-E		570	NORTH	320	WEST	EDDY

## Bottom Hole Location If Different From Surface

UL or lot No.	Section	Township	Range	Lot Idn	Feet from the	North/South line	Feet from the	East/West line	County
3	18	23-S	31-E		2620	SOUTH	1120	WEST	EDDY

Dedicated Acres	Joint or Infill	Consolidation Code	Order No.
<b>800</b>	<b>816.41</b>		

NO ALLOWABLE WILL BE ASSIGNED TO THIS COMPLETION UNTIL ALL INTERESTS HAVE BEEN CONSOLIDATED  
OR A NON-STANDARD UNIT HAS BEEN APPROVED BY THE DIVISION



PROPOSED BOTTOM HOLE LOCATION  
Y=474857.1 N  
X=699318.5 E  
LAT.=32.304420° N  
LONG.=103.822004° W

POINT LEGEND	
1	Y=474872.1 N X=698198.4 E
2	Y=472231.9 N X=698209.1 E
3	Y=466947.6 N X=698233.1 E
4	Y=464305.5 N X=698245.0 E
5	Y=461665.2 N X=698257.3 E
6	Y=461680.7 N X=700956.7 E
7	Y=466962.4 N X=700928.3 E
8	Y=472244.2 N X=700898.0 E
9	Y=474884.1 N X=700884.2 E

SURFACE LOCATION  
Y=461097.1 N  
X=698579.9 E  
LAT.=32.266606° N  
LONG.=103.824606° W

## OPERATOR CERTIFICATION

I hereby certify that the information herein is true and complete to the best of my knowledge and belief, and that this organization either owns a working interest or unleased mineral interest in the land including the proposed bottom hole location or has a right to drill this well at this location pursuant to a contract with an owner of such mineral or working interest, or to a voluntary pooling agreement or a compulsory pooling order heretofore entered by the division.

*Sarah Chapman* 8/29/19  
Signature Date

*Sarah Chapman*  
Printed Name

*Sarah.Chapman@oxy.com*  
E-mail Address

## SURVEYOR CERTIFICATION

I hereby certify that the well location shown on this plat was plotted from field notes of actual surveys made by me or under my supervision, and that the same is true and correct to the best of my belief.

JULY 10, 2019

Date of Survey

Signature &amp; Seal of Professional Surveyor



*Chad Harcrow* 8/23/19  
Certificate No. CHAD HARCROW 17777  
W.O. # 19-1289 DRAWN BY: CD

KS 2-10-20

Intent ☒ As Drilled ☐

API #

Operator Name: <i>Ovy USA Inc.</i>	Property Name: <i>Precious 30-18 Federal Com</i>	Well Number: <i>22H</i>
---------------------------------------	---	----------------------------

Kick Off Point (KOP)

UL <i>4</i>	Section <i>30</i>	Township <i>23S</i>	Range <i>21E</i>	Lot	Feet <i>50</i>	From N/S <i>South</i>	Feet <i>1120</i>	From E/W <i>West</i>	County <i>EDDY</i>
Latitude <i>32.268312</i>					Longitude <i>-103.822018</i>			NAD <i>NAD83</i>	

First Take Point (FTP)

UL <i>4</i>	Section <i>30</i>	Township <i>23S</i>	Range <i>31E</i>	Lot	Feet <i>100</i>	From N/S <i>South</i>	Feet <i>1120</i>	From E/W <i>West</i>	County <i>EDDY</i>
Latitude <i>32.268450</i>					Longitude <i>-103.822018</i>			NAD <i>NAD83</i>	

Last Take Point (LTP)

UL <i>3</i>	Section <i>18</i>	Township <i>23S</i>	Range <i>31E</i>	Lot	Feet <i>2540</i>	From N/S <i>South</i>	Feet <i>1120</i>	From E/W <i>West</i>	County <i>EDDY</i>
Latitude <i>32.304200</i>					Longitude <i>-103.822004</i>			NAD <i>NAD83</i>	

Is this well the defining well for the Horizontal Spacing Unit? ☐

Is this well an infill well? ☐

If infill is yes please provide API if available, Operator Name and well number for Defining well for Horizontal Spacing Unit.

API #

Operator Name:	Property Name:	Well Number:
----------------	----------------	--------------

KZ 06/29/2018