

UNITED STATES
DEPARTMENT OF THE INTERIOR
BUREAU OF LAND MANAGEMENT

Oil Cons.
N.M. DIV-Dist. 2
1301 W. Grand Avenue
Artesia, NM 88210

FORM APPROVED
OMB NO. 1004-0137
Expires: January 31, 2004

WELL COMPLETION OR RECOMPLETION REPORT AND LOG

1a. Type of Well ☐ Oil Well ☒ Gas Well ☐ Dry ☐ Other
b. Type of Completion: ☒ New Well ☐ Work Over ☐ Deepen ☐ Plug Back ☐ Diff. Resvr.,
Other:

2. Name of Operator
Yates Petroleum Corporation

3. Address
105 S. 4th Str., Artesia, NM 88210

3a. Phone No. (include area code)
505-748-1471

4. Location of Well (Report location clearly and in accordance with Federal requirements)

At Surface 1903'FSL & 1885'FWL (Unit K, NESW)

At top prod. Interval reported below Same as above

At total depth Same as above

5. Lease Serial No.

NM-90510

6. If Indian, Allottee or Tribe Name

7. Unit or CA Agreement Name and No.

8. Lease Name and Well No.

Wilhelmina BBM Fed Com #1

9. API Well No.

30-005-63549

10. Field and Pool, or Exploratory

Pecos Slope Abo

11. Sec., T., R., M., on Block and
Survey or Area

Section 24-T5S-R25E

12. County or Parish 13. State

Chaves

New Mexico

14. Date Spudded
RH 2/28/03 RT 3/23/03

15. Date T.D. Reached
4/12/03

16. Date Completed 7/14/03
☐ D & A ☐ Ready to Prod.

17. Elevations (DF, RKB, RT, GL)*

3695'GL 3708'KB

18. Total Depth: MD 5800'
TVD NA

19. Plug Back T.D.: MD 5400'
TVD NA

20. Depth Bridge Plug Set: MD 5535' and 5400'
TVD NA

21. Type Electric & Other Mechanical Logs Run (Submit copy of each)

CNL, Azimuthal Laterolog, Borehole Compensated Sonic

22 Was Well cored? ☒ No ☐ Yes (Submit analysis)
Was DST run? ☒ No ☐ Yes (Submit report)
Directional Survey? ☒ No ☐ Yes (Submit copy)

23. Casing and Liner Record (Report all strings set in well)

Hole Size	Size/Grade	Wt. (#/ft.)	Top (MD)	Bottom (MD)	State Cementer Depth	No. of Sks & Type of Cement	Slurry Vol. (BBL)	Cement Top*	Amount Pulled
	16"		Surf	40'		Conductor		Surf	
14-3/4"	11-3/4"	42#	Surf	925'		1050 sx		Surf	
11"			Surf	1486'					
7-7/8"	4-1/2"	11.6#	1486'	5800'		725 sx		3620'	

24. Tubing Record

Size	Depth Set (MD)	Packer Depth (MD)	Size	Depth Set (MD)	Packer Depth (MD)	Size	Depth Set (MD)	Packer Depth (MD)
2-3/8"	3800'							

25. Producing Intervals

Formation	Top	Bottom
A) Abo	3846'	4246'
B)		
C)		
D)		

26. Perforation Record

Perforated Interval	Size	No. Holes	Perf. Status
See Attached Sheet			

27. Acid, Fracture, Treatment, Cement Squeeze, Etc.

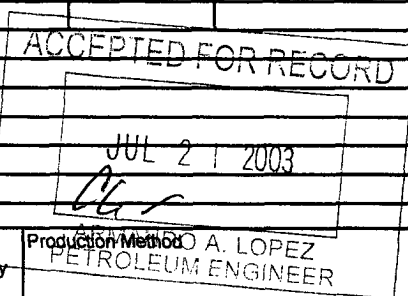
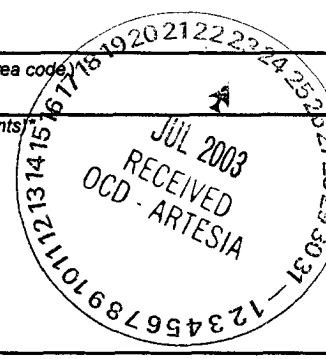
Depth Interval	Amount and Type of Material
5542'-5554'	Acidize w/1000g 20% IC acid
3846'-4246'	Frac w/108,500g 55Q CO2 foam and 250,000# 16/30 Brady

28. Production - Interval A

Date First Produced	Test Date	Hours Tested	Test Production	Oil BBL	Gas MCF	Water BBL	Oil Gravity Corr. API	Gas Gravity	Production Method
	7/12/03	24	⇒	0	70	210	NA	NA	
Choke Size	Tbg. Press. Flwg.	Csg. Press.	24 Hr. Rate	Oil BBL	Gas MCF	Water BBL	Gas: Oil Ratio	Well Status	
NA	270 psi	90 psi	⇒	0	70	210	NA	SIWOPL	

28a. Production-Interval B

Date First Produced	Test Date	Hours Tested	Test Production	Oil BBL	Gas MCF	Water BBL	Oil Gravity Corr. API	Gas Gravity	Production Method
			⇒						
Choke Size	Tbg. Press. Flwg.	Csg. Press.	24 Hr. Rate	Oil BBL	Gas MCF	Water BBL	Gas: Oil Ratio	Well Status	
			⇒						



28b. Production - Interval C

Date First Produced	Test Date	Hours Tested	Test Production ⇒	Oil BBL	Gas MCF	Water BBL	Oil Gravity Corr. API	Gas Gravity	Production Method
Choke Size	Tbg. Press. Flwg.	Csg. Press.	24 Hr. Rate ⇒	Oil BBL	Gas MCF	Water BBL	Gas: Oil Ratio	Well Status	

28c. Production - Interval D

Date First Produced	Test Date	Hours Tested	Test Production ⇒	Oil BBL	Gas MCF	Water BBL	Oil Gravity Corr. API	Gas Gravity	Production Method
Choke Size	Tbg. Press. Flwg.	Csg. Press.	24 Hr. Rate ⇒	Oil BBL	Gas MCF	Water BBL	Gas: Oil Ratio	Well Status	

29. Disposition of Gas (Sold, used for fuel, vented, etc.)

Sold if produced

30. Summary of Porous Zones (Include Aquifers):

Show all important zones of porosity and contents thereof. Cored intervals and all drill-stem tests, including depth interval tested, cushion used, time tool open, flowing and shut-in pressures and recoveries.

31. Formation (Log) Markers

Formation	Top	Bottom	Description, Contents, etc.	Name	Top Meas Depth
				San Andres	716'
				Glorieta	1628'
				Yeso	1746'
				Tubb	3142'
				Abo	3805'
				Wolfcamp	4481'
				WC B Zone	4574'
				Spear	4808'
				Cisco	5088'
				Strawn	5266'
				Miss	5508'
				Siluro-Devonian	5540'
				Pre-Cambrian	5580'

32. Additional remarks (include plugging procedure):

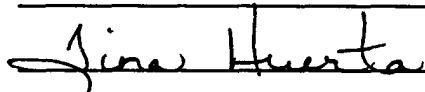
33. Circle enclosed attachments:

- ☒ 1. Electrical/Mechanical Logs (1 full set req'd.) 2. Geologic Report 3. DST Report 4. Directional Survey
☐ 5. Sundry Notice for plugging and cement verification 6. Core Analysis ☒ 7. Other Deviation Survey

34. I hereby certify that the foregoing and attached information is complete and correct as determined from all available records (see attached instructions)*

Name (please print) Tina HuertaTitle Regulatory Compliance Supervisor

Signature

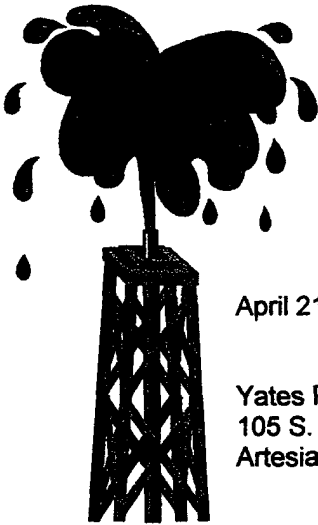

Date July 14, 2003

Title 18 U.S.C. Section 1001 and Title 43 U.S.C. Section 1212, make it a crime for any person knowingly and willfully to make to any department or agency of the United States any false, fictitious or fraudulent statements or representations as to any matter within its jurisdiction.

YATES PETROLEUM CORPORATION
Wilhelmina BBM Fed Com #1
Section 24-T5S-R25E

Form 3160-4 continued:

26. Perforation Record			
Perforated Interval	Size	No. Holes	Perf. Status
5542'-5554'		25	Under CIBP
5468'-5474'		36	Under CIBP
5482'-5492'		60	Under CIBP
3846'-3856'		11	Open
3868'-3872'		5	Open
3958'-3969'		11	Open
3986'-3998'		13	Open
4090'-4100'		11	Open
4102'-4106'		5	Open
4238'-4246'		9	Open



Artesia Fishing Tool Co., Inc.

Oil Well Drilling Contractors
PO Box 1370 Artesia, NM 88211-1370
505/746-6651 746-3518 fax 748-2205

April 21, 2003

Yates Petroleum Corporation
105 S. Fourth
Artesia, NM 88210

RE: Wilhelmina BBN Fed Com #1
1903' FSL & 1885' FWL
Sec. 24, T6S, R25E
Chaves County, New Mexico

Gentlemen:

The following is a Deviation Survey for the above captioned well.

DEPTH	DEVIATION	DEPTH	DEVIATION
444'	1°	3232'	1 1/2°
946'	2°	3716'	3/4°
1031'	1 3/4°	4233'	1°
1402'	1°	4728'	1 3/4°
1584'	3/4°	4978'	1°
1749'	1 1/2°	5485'	1°
2243'	1 1/2°	5800'	1 1/4°
2726'	3/4°		



Very truly yours,

Eddie C. LaRue
Vice President

STATE OF NEW MEXICO }
COUNTY OF EDDY }

The foregoing was acknowledged before me
This 21st day of April, 2003.

Notary Public

03-1209

Serving Southeast New Mexico and West Texas Since 1974