

District I  
1625 N. French Dr., Hobbs, NM 88240  
Phone: (575) 393-6161 Fax: (575) 393-0720  
District II  
811 S. First St., Artesia, NM 88210  
Phone: (575) 748-1283 Fax: (575) 748-9720  
District III  
1000 Rio Brazos Road, Aztec, NM 87410  
Phone: (505) 334-6178 Fax: (505) 334-6170  
District IV  
1220 S. St. Francis Dr., Santa Fe, NM 87505  
Phone: (505) 476-3460 Fax: (505) 476-3462

State of New Mexico  
Energy, Minerals & Natural Resources Department  
OIL CONSERVATION DIVISION  
1220 South St. Francis Dr.  
Santa Fe, NM 87505

RECEIVED

FEB 10 2020

Form C-102

Revised August 1, 2011

Submit one copy to appropriate

District Office

☐ AMENDED REPORT

WELL LOCATION AND ACREAGE DEDICATION PLAT

<sup>1</sup> API Number <b>30 015 46731</b>	<sup>2</sup> Pool Code <b>98220</b>	<sup>3</sup> Pool Name <b>Purple Sage; Wolfcamp</b>
<sup>4</sup> Property Code <b>32546A</b>	<sup>5</sup> Property Name <b>POKER LAKE UNIT 17 TWR</b>	
<sup>7</sup> OGRID No. <b>260737 373075</b>	<sup>8</sup> Operator Name <b>XTO PERMIAN OPERATING, LLC.</b>	
	<sup>6</sup> Well Number <b>108H</b>	<sup>9</sup> Elevation <b>3,522'</b>

<sup>10</sup> Surface Location

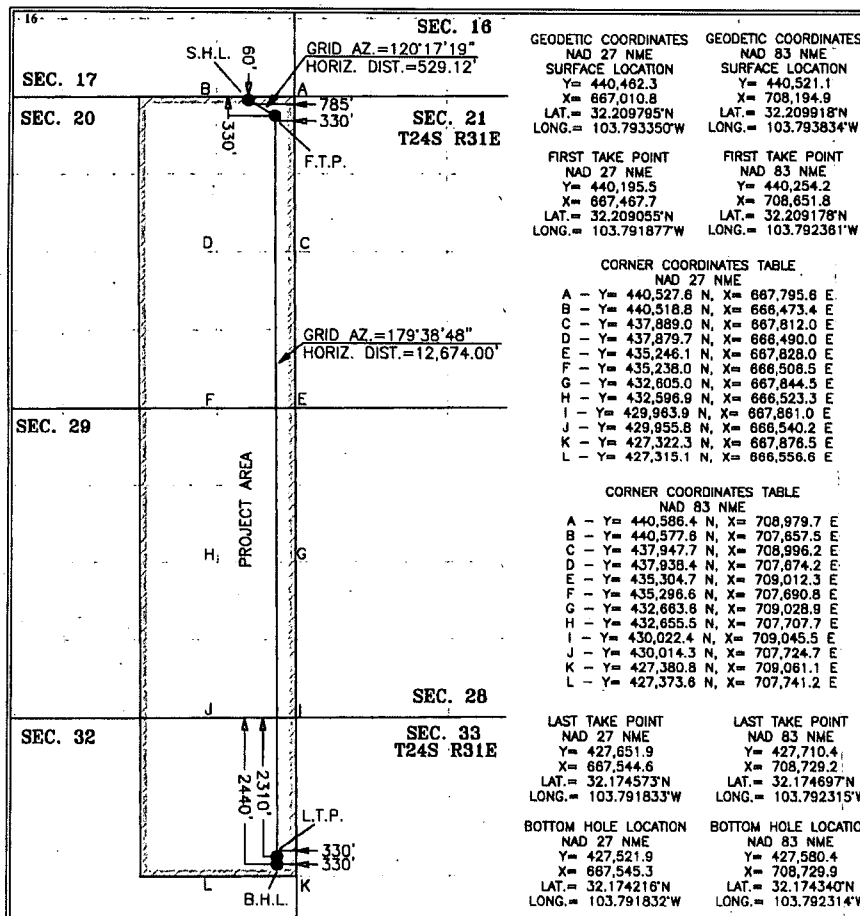
UL or lot no.	Section	Township	Range	Lot Idn	Feet from the	North/South line	Feet from the	East/West line	County
A	20	24 S	31 E		60	NORTH	785	EAST	EDDY

<sup>11</sup> Bottom Hole Location If Different From Surface

UL or lot no.	Section	Township	Range	Lot Idn	Feet from the	North/South line	Feet from the	East/West line	County
H	32	24 S	31 E		2,440	NORTH	330	EAST	EDDY

<sup>12</sup> Dedicated Acres <b>800</b>	<sup>13</sup> Joint or Infill	<sup>14</sup> Consolidation Code	<sup>15</sup> Order No.
---	-------------------------------	----------------------------------	-------------------------

No allowable will be assigned to this completion until all interests have been consolidated or a non-standard unit has been approved by the division.



<sup>17</sup> OPERATOR CERTIFICATION

I hereby certify that the information contained herein is true and complete to the best of my knowledge and belief, and that this organization either owns a working interest or unleased mineral interest in the land including the proposed bottom hole location or has a right to drill this well at this location pursuant to a contract with an owner of such a mineral or working interest, or to a voluntary pooling agreement or a compulsory pooling order heretofore entered by the division.

Signature: *Kelly Kardos* Date: *01/18/18*

Printed Name

*kelly\_kardos@xtoenergy.com*

E-mail Address

<sup>18</sup> SURVEYOR CERTIFICATION

I hereby certify that the well location shown on this plat was plotted from field notes of actual surveys made by me or under my supervision, and that the same is true and correct to the best of my belief.

05-15-2018

Date of Survey

Signature and Seal of Professional Surveyor:

*[Signature]*

MARK DILLON HARP 23786  
Certificate Number



AI/AW 2018010213

LS 2-12-20

Intent ☒ As Drilled ☐

API #

Operator Name: XTO PERMIAN OPERATING, LLC	Property Name: POKER LAKE UNIT 17 TWR	Well Number 108H
--	--	---------------------

Kick Off Point (KOP)

UL A	Section 20	Township 24S	Range 31E	Lot	Feet 60	From N/S NORTH	Feet 785	From E/W EAST	County EDDY
Latitude 32.209918					Longitude -103.793834			NAD 83	

First Take Point (FTP)

UL A	Section 20	Township 24S	Range 31E	Lot	Feet 330	From N/S NORTH	Feet 330	From E/W EAST	County EDDY
Latitude 32.209178					Longitude -103.792361			NAD 83	

Last Take Point (LTP)

UL H	Section 32	Township 24S	Range 31E	Lot	Feet 330	From N/S SOUTH	Feet 330	From E/W EAST	County EDDY
Latitude 32.174697					Longitude -103.792315			NAD 83	

Is this well the defining well for the Horizontal Spacing Unit? ☐ N

Is this well an infill well? ☐ Y

If infill is yes please provide API if available, Operator Name and well number for Defining well for Horizontal Spacing Unit.

API #

Operator Name: XTO PERMIAN OPERATING, LLC	Property Name: POKER LAKE UNIT 17 TWR	Well Number 127H
--	--	---------------------

KZ 06/29/2018