

District I
1625 N French Dr., Hobbs, NM 88240
Phone: (575) 393-6161 Fax: (575) 393-0720
District II
811 S First St., Artesia, NM 88210
Phone: (575) 748-1283 Fax: (575) 748-9720
District III
1000 Rio Brazos Road, Aztec, NM 87410
Phone: (505) 334-6178 Fax: (505) 334-6170
District IV
1220 S St Francis Dr., Santa Fe, NM 87505
Phone: (505) 476-3460 Fax: (505) 476-3462

State of New Mexico
Energy, Minerals & Natural Resources
Department
OIL CONSERVATION DIVISION
1220 South St. Francis Dr.
Santa Fe, NM 87505

RECEIVED

FEB 20 2020

FORM C-102

Revised August 1, 2011

Submit one copy to appropriate

District Office

EMNRD-OCD ARTESIA

☐ AMENDED REPORT

WELL LOCATION AND ACREAGE DEDICATION PLAT

¹ API Number 30-015-44573	² Pool Code 98315	³ Pool Name Burton Flat East; Upper Wolfcamp (Oil)
⁴ Property Code 628877 326 284	⁵ Property Name PENNZOIL 3231 FED COM	⁶ Well Number 221H
⁷ OCRID No. 228937	⁸ Operator Name MATADOR PRODUCTION COMPANY	⁹ Elevation 3264'

¹⁰Surface Location

UL or lot no.	Section	Township	Range	Lot Idn	Feet from the	North/South line	Feet from the	East/West line	County
D	33	20-S	29-E	-	570'	NORTH	280'	WEST	EDDY

¹¹Bottom Hole Location If Different From Surface

UL or lot no.	Section	Township	Range	Lot Idn	Feet from the	North/South line	Feet from the	East/West line	County
1	31	20-S	29-E	-	339'	NORTH	60'	WEST	EDDY

¹² Dedicated Acres 318.30	¹³ Joint or Infill	¹⁴ Consolidation Code	¹⁵ Order No.
---	-------------------------------	----------------------------------	-------------------------

No allowable will be assigned to this completion until all interests have been consolidated or a non-standard unit has been approved by the division.

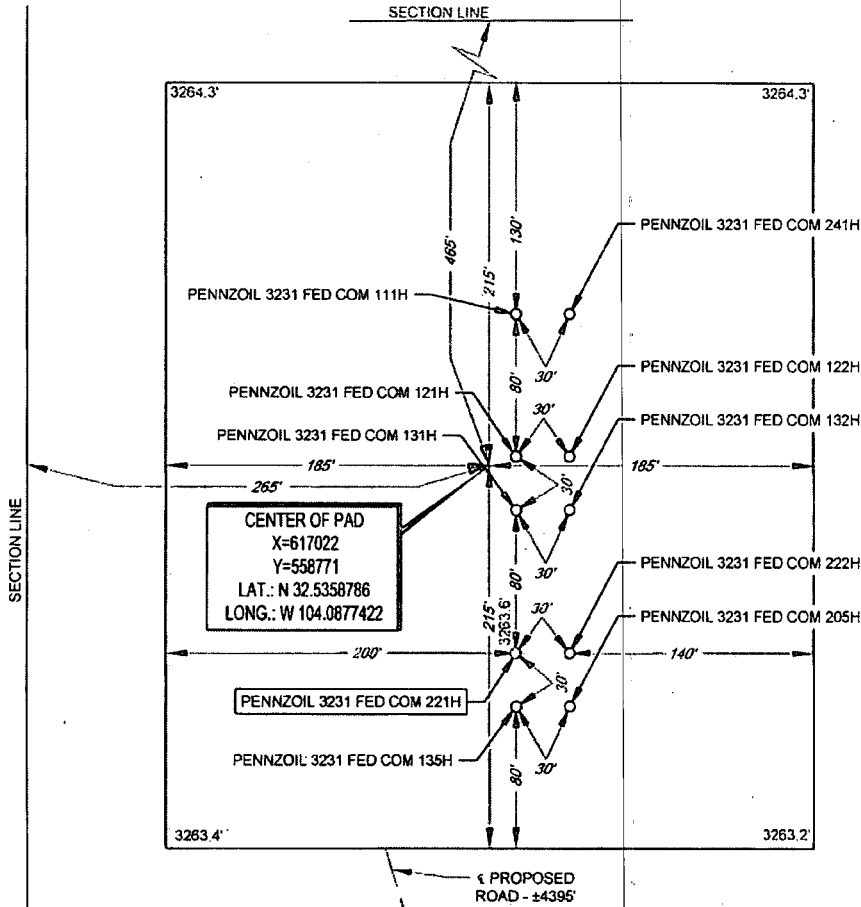
<p>¹⁶</p> <p>LAST PERFORATION POINT NEW MEXICO EAST NAD 1927 X=565165 Y=558850 LAT.: N 32.5362105 LONG.: W 104.1218815 NAD 1983 X=606345 Y=558912 LAT.: N 32.5363290 LONG.: W 104.1223858</p> <p>FIRST PERFORATION POINT NEW MEXICO EAST NAD 1927 X=575476 Y=558841 LAT.: N 32.5361249 LONG.: W 104.0884233 NAD 1983 X=616656 Y=558903 LAT.: N 32.5362437 LONG.: W 104.0889267</p> <p>SURFACE LOCATION NEW MEXICO EAST NAD 1927 X=575856 Y=558604 LAT.: N 32.5354712 LONG.: W 104.0871904 NAD 1983 X=617037 Y=558666 LAT.: N 32.5355901 LONG.: W 104.0876938</p> <p>BOTTOM HOLE LOCATION NEW MEXICO EAST NAD 1927 X=565125 Y=558850 LAT.: N 32.5362108 LONG.: W 104.1220113 NAD 1983 X=606305 Y=558912 LAT.: N 32.5363293 LONG.: W 104.1225156</p>	<p>¹⁷OPERATOR CERTIFICATION</p> <p>I hereby certify that the information contained herein is true and complete to the best of my knowledge and belief, and that this organization either owns a working interest or unless mineral interest in the land underlying the proposed bottom hole location or has a right to drill this well at this location pursuant to a contract with an owner of such a mineral or working interest, or to a voluntary pooling agreement or a compulsory pooling order heretofore entered by the division.</p> <p><i>Cade LaBolt</i> 7/23/2019 Signature Date</p> <p>Cade LaBolt Printed Name</p> <p>cade.labolt@matadorresources.com E-mail Address</p> <p>¹⁸SURVEYOR CERTIFICATION</p> <p>I hereby certify that the well location shown on this plat was plotted from field notes of actual surveys made by me or under my supervision, and that the same is true to the best of my belief.</p> <p>06/28/2019 Date of Survey</p> <p><i>ANGEL M. DE LA PENA</i> Signature and Seal of Professional Surveyor</p> <p>Certificate Number</p>
---	---

RWP 2-27-2020



SECTION 33, TOWNSHIP 20-S, RANGE 29-E, N.M.P.M.
EDDY COUNTY, NEW MEXICO

DETAIL VIEW
SCALE: 1" = 100'



LEGEND

SECTION LINE
PROPOSED ROAD

LEASE NAME & WELL NO.: PENNZOIL 3231 FED COM 221H

221H LATITUDE N 32.5355901

221H LONGITUDE W 104.0876938

CENTER OF PAD IS 465' FNL & 265' FWL



SCALE: 1" = 100'
0' 50' 100'

ALL BEARINGS, DISTANCES, AND COORDINATE VALUES CONTAINED HEREON ARE GRID BASED UPON THE NEW MEXICO COORDINATE SYSTEM OF 1983, EAST ZONE, U.S. SURVEY FEET

THIS PROPOSED PAD SITE LOCATION SHOWN HEREON HAS BEEN SURVEYED ON THE GROUND UNDER MY SUPERVISION AND PREPARED ACCORDING TO THE EVIDENCE FOUND AT THE TIME OF SURVEY, AND DATA PROVIDED BY MATADOR PRODUCTION COMPANY. THIS CERTIFICATION IS MADE AND LIMITED TO THOSE PERSONS OR ENTITIES SHOWN ON THE FACE OF THIS PLAT AND IS NON-TRANSFERABLE. THIS SURVEY IS CERTIFIED FOR THIS TRANSACTION ONLY

ORIGINAL DOCUMENT SIZE: 8.5" X 11"



TOPOGRAPHIC
LOYALTY INNOVATION LEGACY

1400 EVERMAN PARKWAY, Ste. 149 - FT. WORTH, TEXAS 76140
TELEPHONE (817) 744-7512 - FAX (817) 744-7554
2803 NORTH BIG SPRING - MIDLAND, TEXAS 79705
TELEPHONE: (432) 682-1653 OR (800) 767-1653 - FAX (432) 682-1743
WWW.TOPOGRAPHIC.COM