

State of New Mexico  
Energy, Minerals and Natural Resources Department

Michelle Lujan Grisham  
Governor

Sarah Cottrell Propst  
Cabinet Secretary

Todd E. Leahy, JD, PhD  
Deputy Secretary

Adrienne Sandoval, Division Director  
Oil Conservation Division



4/20/2020

## Notice of C-104 Denial and Request for Information

OCD denies your C-104 – *Request for Allowable and Authorization to Transport* because it is incomplete or conflicts with other information provided to OCD.

The sale or transport of product without a C-104 approved by OCD violates the Oil and Gas Act and the implementing rules, including 19.15.7.15 and 19.15.16.19 NMAC.

To avoid an enforcement action, you must submit the indicated information no later than 30 days after receipt of this notice.

30-015-33230

### Test Allowable, New Well and Recompleted Well

Amend - C-104

- ☐ C-103 (or BLM equivalent) for all casing strings
  - ☐ Spud Notice
  - ☐ Surface Casing
  - ☐ Intermediate Casing (if applicable)
  - ☐ Additional Intermediate Casing (if applicable)
  - ☐ Production Casing or Liner

Is this a re-completion?  
What File type.

- ☐ Applicable Order (NSL, NSP, Other \_\_\_\_\_)

☒ Deviation Survey for Vertical Wells

☒ Directional Survey

☒ C-102 (As-Drilled Plat for Horizontal Well)

### New Well and Recompleted Well Only

☒ C-103 Completion Sundry (or BLM equivalent)

☒ C-105 Completion Report (or BLM equivalent)

☐ All Logs Run on Well

If you have any questions please contact the local OCD District Office

Once revisions are made, Submit electronically through e-docs  
ASAP.

District I  
1625 N. French Dr., Hobbs, NM 88240  
District II  
811 S. First St., Artesia, NM 88210  
District III  
1000 Rio Brazos Rd., Aztec, NM 87410  
District IV  
1220 S. St. Francis Dr., Santa Fe, NM 87505

State of New Mexico  
Energy, Minerals & Natural Resources

RECEIVED

Form C-104  
Revised August 1, 2011

Oil Conservation Division  
1220 South St. Francis Dr.  
Santa Fe, NM 87505

MAR 26 2020

Submit one copy to appropriate District Office

EMNRD-OCDARTESIA

UNDELETED REPORT

I. REQUEST FOR ALLOWABLE AND AUTHORIZATION TO TRANSPORT

|   |   |   |
|---|---|---|
| <sup>1</sup> Operator name and Address<br>HEXP Operating, LLC<br>113 Corporate Drive<br>Midland, TX 79705 |   | <sup>2</sup> OGRID Number<br>329141                     |
| <sup>4</sup> API Number<br>30 - 015-33230   |   | <sup>5</sup> Pool Name<br>N Seven Rivers; Glorieta-Yeso |
| <sup>7</sup> Property Code<br>319811  | <sup>8</sup> Property Name<br>Simmental | <sup>6</sup> Pool Code<br>97565                         |
|   |   | <sup>9</sup> Well Number<br>001                         |

II. <sup>10</sup> Surface Location

| UL or lot no. | Section | Township | Range | Lot Idn | Feet from the | North/South Line | Feet from the | East/West line | County |
|---------------|---------|----------|-------|---------|---------------|------------------|---------------|----------------|--------|
| G             | 22      | 20-S     | 25-E  |         | 1980'         | North            | 1980'         | East           | Eddy   |

<sup>11</sup> Bottom Hole Location

| UL or lot no.          | Section                             | Township                          | Range                             | Lot Idn                            | Feet from the                       | North/South line | Feet from the | East/West line | County |
|------------------------|-------------------------------------|-----------------------------------|-----------------------------------|------------------------------------|-------------------------------------|------------------|---------------|----------------|--------|
|                        |                                     |                                   |                                   |                                    |                                     |                  |               |                |        |
| <sup>12</sup> Lse Code | <sup>13</sup> Producing Method Code | <sup>14</sup> Gas Connection Date | <sup>15</sup> C-129 Permit Number | <sup>16</sup> C-129 Effective Date | <sup>17</sup> C-129 Expiration Date |                  |               |                |        |

III. Oil and Gas Transporters

| <sup>18</sup> Transporter OGRID | <sup>19</sup> Transporter Name and Address                            | <sup>20</sup> O/G/W |
|---------------------------------|---|---------------------|
| 371631                          | Ace Energy Solutions<br>24275 Katy Freeway, Ste 325<br>Katy, TX 77494 | O                   |
|                                 |   |                     |
|                                 |   |                     |
|                                 |   |                     |
|                                 |   |                     |
|                                 |   |                     |
|                                 |   |                     |

IV. Well Completion Data

|                                       |  |                           |                             |   |                       |
|---------------------------------------|--|---------------------------|-----------------------------|---|-----------------------|
| <sup>21</sup> Spud Date<br>02/08/2004 | <sup>22</sup> Ready Date<br>12/05/2019 | <sup>23</sup> TD<br>9800' | <sup>24</sup> PBTD<br>2925' | <sup>25</sup> Perforations<br>2728' - 2802' | <sup>26</sup> DHC, MC |
| <sup>27</sup> Hole Size               | <sup>28</sup> Casing & Tubing Size     | <sup>29</sup> Depth Set   | <sup>30</sup> Sacks Cement  |   |                       |
| 17-1/2"                               | 13-3/8"                                | 353'                      | 713                         |   |                       |
| 12-1/4"                               | 8-5/8"                                 | 1483'                     | 650                         |   |                       |
| 7-7/8"                                | 4-1/2"                                 | 9800'                     | 1440                        |   |                       |
|                                       |  |                           |                             |   |                       |

V. Well Test Data

|  |   |                                       |                                 |                             |                                       |
|--|---|---------------------------------------|---------------------------------|-----------------------------|---------------------------------------|
| <sup>31</sup> Date New Oil<br>12/05/2019 | <sup>32</sup> Gas Delivery Date<br>12/05/2019 | <sup>33</sup> Test Date<br>12/05/2019 | <sup>34</sup> Test Length<br>24 | <sup>35</sup> Tbg. Pressure | <sup>36</sup> Csg. Pressure<br>225    |
| <sup>37</sup> Choke Size<br>open         | <sup>38</sup> Oil<br>17                       | <sup>39</sup> Water<br>883            | <sup>40</sup> Gas<br>2          |                             | <sup>41</sup> Test Method<br>swabbing |

<sup>42</sup> I hereby certify that the rules of the Oil Conservation Division have been complied with and that the information given above is true and complete to the best of my knowledge and belief.

Signature: *Courtney Foster*  
Printed name: Courtney Foster  
Title: Regulatory Analyst  
E-mail Address: cfoster@hexpresources.com  
Date: 3/2/2020  
Phone: 432-661-3573

OIL CONSERVATION DIVISION

Approved by:

Title:

Approval Date:

**DISTRICT I**  
1625 N. French Dr., Hobbs, NM 88240  
Phone: (575) 393-6161 Fax: (575) 393-0720

**DISTRICT II**  
811 S. First St., Artesia, NM 88210  
Phone: (575) 748-1283 Fax: (575) 748-9720

**DISTRICT III**  
1000 Rio Brazos Rd., Aztec, NM 87410  
Phone: (505) 334-6178 Fax: (505) 334-6170

**DISTRICT IV**  
1220 S. St. Francis Dr., Santa Fe, NM 87505  
Phone: (505) 476-3460 Fax: (505) 476-3462

**State of New Mexico**  
**Energy, Minerals & Natural Resources Department**  
**OIL CONSERVATION DIVISION**  
**1220 South St. Francis Dr.**  
**Santa Fe, New Mexico 87505**

**RECEIVED**

Form C-102  
Revised August 1, 2011

Submit one copy to appropriate District Office

**EMNRD-OCD ARTESIA AMENDED REPORT**

**WELL LOCATION AND ACREAGE DEDICATION PLAT**

|                                   |   |  |
|-----------------------------------|---|--|
| API Number<br><b>30-015-33230</b> | Pool Code<br><b>97565</b>                   | Pool Name<br><b>N. SEVEN RIVERS; GLORIETA-YESO</b> |
| Property Code<br><b>319811</b>    | Property Name<br><b>SIMMENTAL</b>           |  |
| OGRID No.<br><b>329141</b>        | Operator Name<br><b>HEXP OPERATING, LLC</b> |  |
|                                   |   | Well Number<br><b>1</b>                            |
|                                   |   | Elevation<br><b>3445'</b>                          |

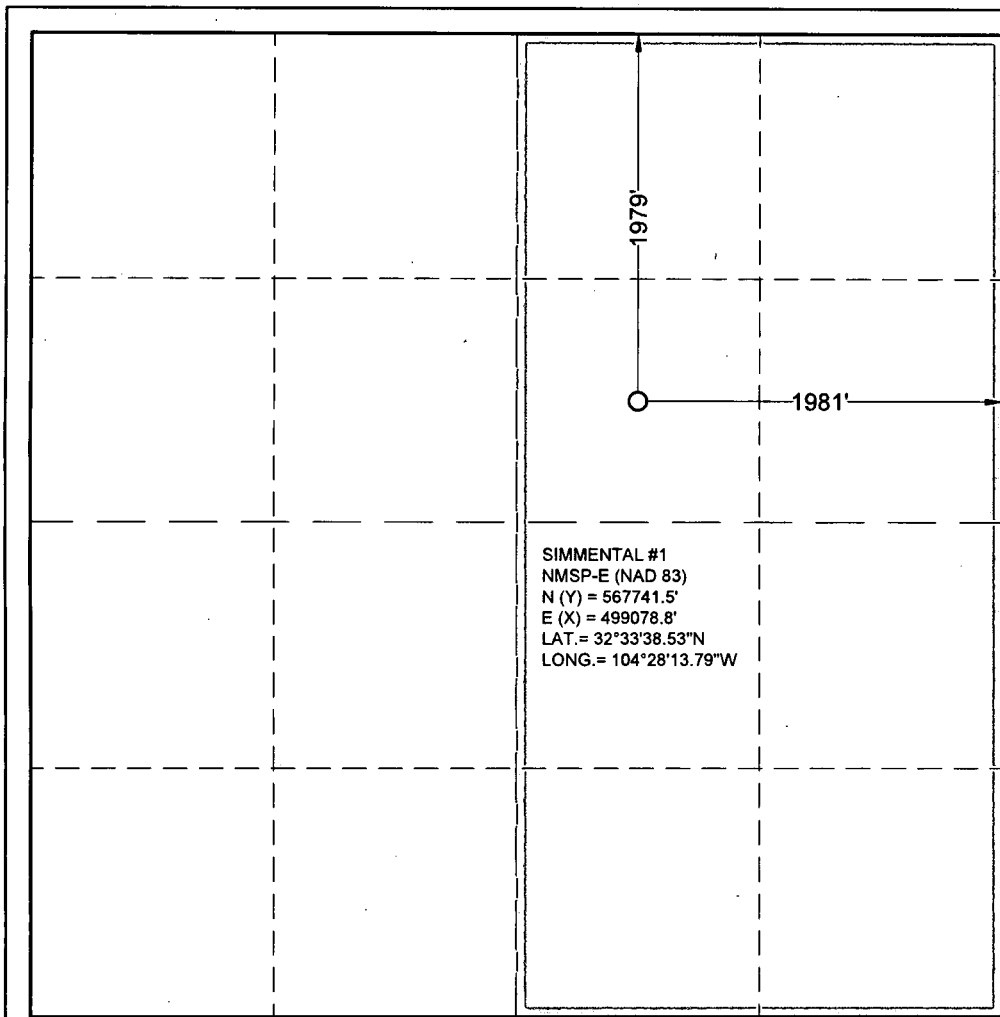
**Surface Location**

| UL or lot no. | Section   | Township   | Range      | Lot Idn | Feet from the | North/South line | Feet from the | East/West line | County      |
|---------------|-----------|------------|------------|---------|---------------|------------------|---------------|----------------|-------------|
| <b>G</b>      | <b>22</b> | <b>20S</b> | <b>25E</b> |         | <b>1979</b>   | <b>N</b>         | <b>1981</b>   | <b>E</b>       | <b>EDDY</b> |

**Bottom Hole Location If Different From Surface**

| UL or lot no.                 | Section | Township        | Range | Lot Idn           | Feet from the | North/South line | Feet from the | East/West line | County |
|-------------------------------|---------|-----------------|-------|-------------------|---------------|------------------|---------------|----------------|--------|
|                               |         |                 |       |                   |               |                  |               |                |        |
| Dedicated Acres<br><b>320</b> |         | Joint or Infill |       | Consolidated Code |               | Order No.        |               |                |        |

**No allowable will be assigned to this completion until all interests have been consolidated or a non-standard unit has been approved by the division.**



**OPERATOR CERTIFICATION**

I hereby certify that the information contained herein is true and complete to the best of my knowledge and belief, and that this organization either owns a working interest or unleased mineral interest in the land including the proposed bottom hole location or has a right to drill this well at this location pursuant to a contract with an owner of such a mineral or working interest, or to voluntary pooling agreement or a compulsory pooling order heretofore entered by the division.

*Courtney Foster*  
Signature

03/11/2020  
Date

**COURTNEY FOSTER**  
Print Name

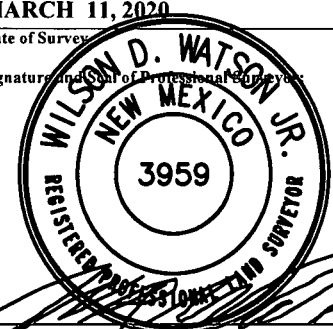
cfoster@hexpresources.com  
E-mail Address

**SURVEYORS CERTIFICATION**

I hereby certify that the well location shown on this plat was plotted from field notes of actual surveys made by me or under my supervision, and that the same is true and correct to the best of my belief.

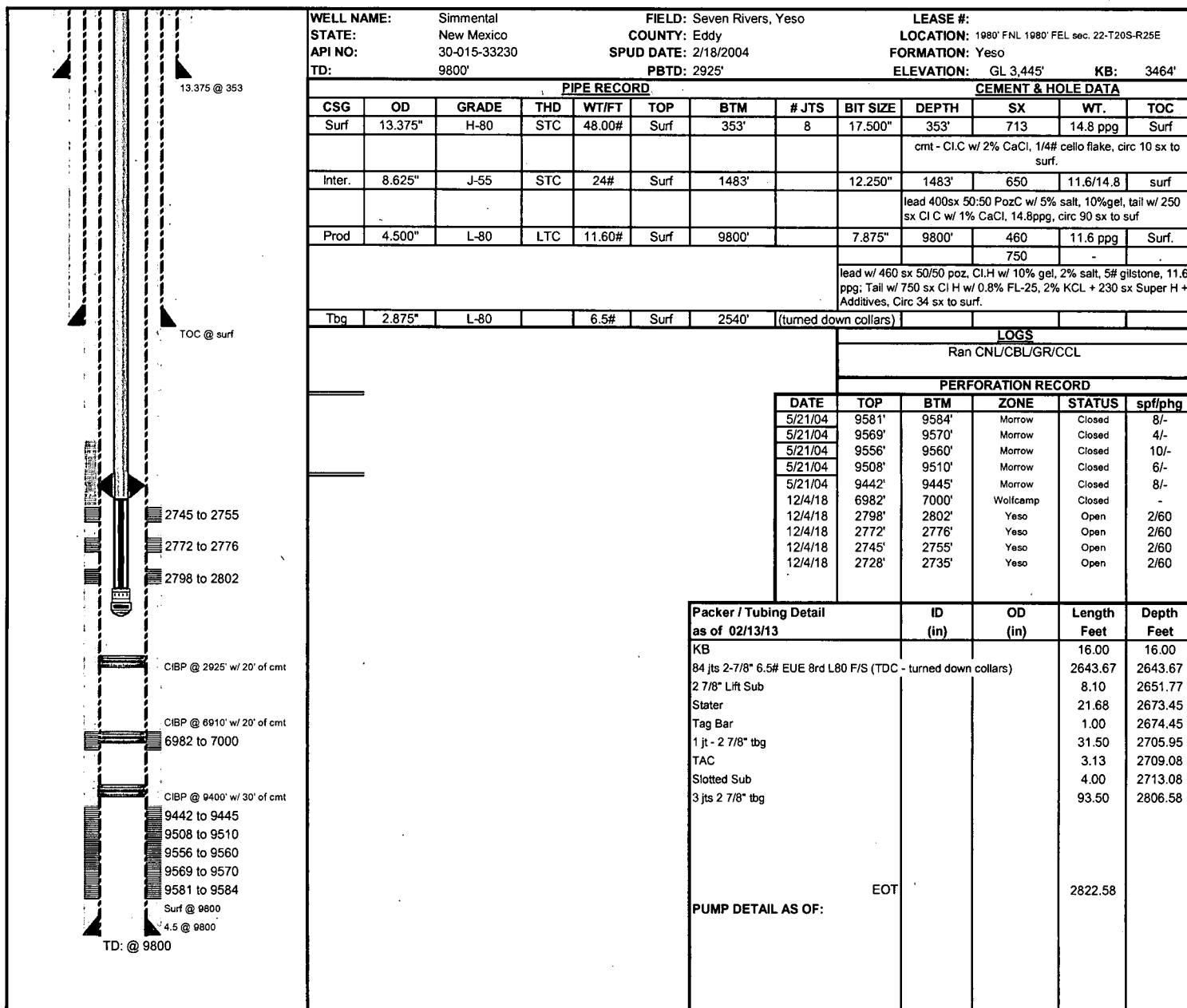
**MARCH 11, 2020**  
Date of Survey

Signature and Seal of Professional Surveyor



Job No.: 203069

**WILSON D. WATSON JR. 3959**  
Certificate Number



|            |  |              |  |                           |  |   |  |
|------------|--|--------------|--|---------------------------|--|---|--|
| WELL NAME: |  | Simmental    |  | FIELD: Seven Rivers, Yeso |  | LEASE #:  |  |
| STATE:     |  | New Mexico   |  | COUNTY: Eddy              |  | LOCATION: 1980' FNL 1980' FEL sec. 22-T20S-R25E |  |
| API NO:    |  | 30-015-33230 |  | SPUD DATE: 2/18/2004      |  | FORMATION: Yeso                                 |  |
| TD:        |  | 9800'        |  | PBTD: 2925'               |  | ELEVATION: GL 3,445' KB: 3464'                  |  |

| PIPE RECORD |         |       |     |        |      |       |                       | CEMENT & HOLE DATA |  |     |           |       |
|-------------|---------|-------|-----|--------|------|-------|-----------------------|--------------------|--|-----|-----------|-------|
| CSG         | OD      | GRADE | THD | WT/FT  | TOP  | BTM   | # JTS                 | BIT SIZE           | DEPTH  | SX  | WT.       | TOC   |
| Surf        | 13.375" | H-80  | STC | 48.00# | Surf | 353'  | 8                     | 17.500"            | 353'   | 713 | 14.8 ppg  | Surf  |
|             |         |       |     |        |      |       |                       |                    | cmt - Cl.C w/ 2% CaCl, 1/4# cello flake, circ 10 sx to surf.   |     |           |       |
| Inter.      | 8.625"  | J-55  | STC | 24#    | Surf | 1483' |                       | 12.250"            | 1483'  | 650 | 11.6/14.8 | surf  |
|             |         |       |     |        |      |       |                       |                    | lead 400sx 50:50 PozC w/ 5% salt, 10%gel, tail w/ 250 sx Cl C w/ 1% CaCl, 14.8ppg, circ 90 sx to surf  |     |           |       |
| Prod        | 4.500"  | L-80  | LTC | 11.60# | Surf | 9800' |                       | 7.875"             | 9800'  | 460 | 11.6 ppg  | Surf. |
|             |         |       |     |        |      |       |                       |                    |  | 750 | -         |       |
|             |         |       |     |        |      |       |                       |                    | lead w/ 460 sx 50/50 poz. Cl.H w/ 10% gel, 2% salt, 5# gilstone, 11.6 ppg; Tail w/ 750 sx Cl H w/ 0.8% FL-25, 2% KCL + 230 sx Super H + Additives, Circ 34 sx to surf. |     |           |       |
| Tbg         | 2.875"  | L-80  |     | 6.5#   | Surf | 2540' | (turned down collars) |                    |  |     |           |       |

| LOGS               |  |  |  |  |  |
|--------------------|--|--|--|--|--|
| Ran CNL/CBL/GR/CCL |  |  |  |  |  |

| PERFORATION RECORD |       |       |          |        |          |
|--------------------|-------|-------|----------|--------|----------|
| DATE               | TOP   | BTM   | ZONE     | STATUS | spft/phg |
| 5/21/04            | 9581' | 9584' | Morrow   | Closed | 8/-      |
| 5/21/04            | 9569' | 9570' | Morrow   | Closed | 4/-      |
| 5/21/04            | 9556' | 9560' | Morrow   | Closed | 10/-     |
| 5/21/04            | 9508' | 9510' | Morrow   | Closed | 6/-      |
| 5/21/04            | 9442' | 9445' | Morrow   | Closed | 8/-      |
| 12/4/18            | 6982' | 7000' | Wolfcamp | Closed | -        |
| 12/4/18            | 2798' | 2802' | Yeso     | Open   | 2/60     |
| 12/4/18            | 2772' | 2776' | Yeso     | Open   | 2/60     |
| 12/4/18            | 2745' | 2755' | Yeso     | Open   | 2/60     |
| 12/4/18            | 2728' | 2735' | Yeso     | Open   | 2/60     |

| Packer / Tubing Detail as of 02/13/13                          |  | ID (in) | OD (in) | Length Feet | Depth Feet |
|--|--|---------|---------|-------------|------------|
| KB   |  |         |         | 16.00       | 16.00      |
| 84 jts 2-7/8" 6.5# EUE 8rd L80 F/S (TDC - turned down collars) |  |         |         | 2643.67     | 2643.67    |
| 2 7/8" Lift Sub  |  |         |         | 8.10        | 2651.77    |
| Stater   |  |         |         | 21.68       | 2673.45    |
| Tag Bar  |  |         |         | 1.00        | 2674.45    |
| 1 jt - 2 7/8" tbg  |  |         |         | 31.50       | 2705.95    |
| TAC  |  |         |         | 3.13        | 2709.08    |
| Slotted Sub  |  |         |         | 4.00        | 2713.08    |
| 3 jts 2 7/8" tbg   |  |         |         | 93.50       | 2806.58    |
| PUMP DETAIL AS OF:   |  | EOT     |         | 2822.58     |            |

Management,

The information contained within is for the **HEXP OPERATING LLC, SIMMENTAL #1**.  
This job began and completed on **DEC 2, 2019**.

**ESO #:IRE9BJH4JA**  
**JOB#:JOB18329BJH4G9**

Blender Unit: 26116B

TX Time  
Safety meeting was held at 6:15 AM  
Lines were tested at 4:20 PM to 4500psi  
Max pressure set at 4700 psi

The following chemical loadings was agreed upon after consulting with Company Man

All additives per thousand gallons

### **Fluids**

**728,201 gals Slickwater**  
*Additives per 1000 Gallons:*  
0.30 gal SI-625  
0.25 gal B-15  
0.50 gal NE-227\*\*  
1.00 gal FR-630  
**2500 gals 15% HCL**  
*Additives per 1000 Gallons:*  
1.00 lb I-112  
1.00 gal NE-227  
5.00 gal FE-4

### **Proppants**

30,000 lbs 100 MESH  
162,000 lbs 40/70 WT PREMIUM  
48,000 lbs 30/50 OTTAWA

**Stage 1 – 12/2/2019**

**\*\*We are pumping VERDE VSFX 1014 at 1.00 gpt instead of NE-227\*\***

**CM requested Gel to be delivered and hooked up, wants to get a 6-7 visc. Will run Gel at 3.0 GPT to the blender suction side using pump 10 on chemadd if needed. No Hydration on location.**

**Crew arrived to location at 7:00 AM, no man lift to finish rigging up risers to wellhead.**

**Man lift on pad at 10:18 AM.**

**Having issues with TMV generator, mechanics bringing a back up to location.**

**TMV generator fixed, ready to pressure test at 4:00 PM.**

**Stage 1**

**CM will adjust treatment schedule continuously.**

**Skipped pre-pad by CM, on acid at. Acid at 15 bpm.**

**B-15 pump stop working, swapping to pump 5 on LAS.**

**Pumped all 30K 100-mesh at one step, doing a sweep after.**

**Adjusting Verde set point to run it all by CM.**

**Running at 60 bpm by CM.**

**By CM:**

**Skip sweeps during 40/70 WT and pump as follow:**

**20K at 0.50 lbs**

**60K at 1.00 lbs**

**50K at 1.5 lbs**

**32K at 2.00 lbs1717**

**Running pump 6 and 7 on Verde trying to keep up with rate and new schedule to pump as much as possible. CM is fine if there's some left over.**

**CM wants to skip sweep between 40/70 and 30/50 staying at 2.00 lb continuous.**

**All sand and acid downhole.**

**Total Sand on Frac Recommendation**

|                  |               |
|------------------|---------------|
| 100 Mesh         | → 30,000 lbs  |
| 40/70 WT PREMIUM | → 162,000 lbs |
| 30/50 OTTAWA     | → 48,000 lbs  |

**Total Sand** → 240,000 lbs

**Total Sand Delivered**

|                  |               |
|------------------|---------------|
| 100 Mesh         | → 30,040 lbs  |
| 40/70 WT PREMIUM | → 162,020 lbs |
| 30/50 OTTAWA     | → 47,980 lbs  |

**Total Sand** → 240,040 lbs

**Total Sand Pumped**

|                  |               |
|------------------|---------------|
| 100 Mesh         | → 30,040 lbs  |
| 40/70 WT PREMIUM | → 162,020 lbs |
| 30/50 OTTAWA     | → 47,980 lbs  |

**Total Sand** → 240,040 lbs

**Total Acid**

**15% HCL** → 2500 gal

**Total Fluid**

|               |                |
|---------------|----------------|
| Clean volume  | → 6105 barrels |
| Slurry volume | → 6369 barrels |

**Original Ticket** → \$68,455.84

**Total Ticket** → \$51,081.94

**Additional Charges on Ticket:**

- Third Party Pump \$1,500 at 0%
- Shower Trailer
- 2" Manual pop-off

- **SG-15G Hot Shot Fee \$1,000 at 0%**



|  |                       |   |                        |  |              |  |                 |                       |          |               |  |
|--|-----------------------|---|------------------------|--|--------------|--|-----------------|-----------------------|----------|---------------|--|
| Submit To Appropriate District Office<br>Two Copies<br>District I<br>1625 N. French Dr., Hobbs, NM 88240<br>District II<br>811 S. First St., Artesia, NM 88210<br>District III<br>1000 Rio Brazos Rd., Aztec, NM 87410<br>District IV<br>1220 S. St. Francis Dr., Santa Fe, NM 87505   |                       | State of New Mexico<br>Energy, Minerals and Natural Resources<br><b>RECEIVED</b><br><b>MAR 24 2020</b><br>Oil Conservation Division<br>1220 South St. Francis Dr.<br>Santa Fe, NM 87505 |                        |  |              | Form C-105<br>Revised April 3, 2017  |                 |                       |          |               |  |
|  |                       | 1. WELL API NO.   |                        | 30-015-33230   |              |  |                 |                       |          |               |  |
|  |                       | 2. Type of Lease  |                        | <input type="checkbox"/> STATE <input checked="" type="checkbox"/> FEE <input type="checkbox"/> FED/INDIAN |              |  |                 |                       |          |               |  |
|  |                       | 3. State Oil & Gas Lease No.  |                        | 319811   |              |  |                 |                       |          |               |  |
| <b>WELL COMPLETION OR RECOMPLETION REPORT AND LOG</b>  |                       |   |                        |  |              |  |                 |                       |          |               |  |
| 4. Reason for filing:  |                       |   |                        |  |              | 5. Lease Name or Unit Agreement Name   |                 |                       |          |               |  |
| <input checked="" type="checkbox"/> <b>COMPLETION REPORT</b> (Fill in boxes #1 through #31 for State and Fee wells only)<br><br><input type="checkbox"/> <b>C-144 CLOSURE ATTACHMENT</b> (Fill in boxes #1 through #9, #15 Date Rig Released and #32 and/or #33; attach this and the plat to the C-144 closure report in accordance with 19.15.17.13.K NMAC) |                       |   |                        |  |              | Simmental  |                 |                       |          |               |  |
| 7. Type of Completion:   |                       |   |                        |  |              | 6. Well Number:  |                 |                       |          |               |  |
| <input type="checkbox"/> NEW WELL <input type="checkbox"/> WORKOVER <input type="checkbox"/> DEEPENING <input type="checkbox"/> PLUGBACK <input checked="" type="checkbox"/> DIFFERENT RESERVOIR <input type="checkbox"/> OTHER  |                       |   |                        |  |              | 001  |                 |                       |          |               |  |
| 8. Name of Operator  |                       |   |                        |  |              | 9. OGRID   |                 |                       |          |               |  |
| HEXP Operating, LLC  |                       |   |                        |  |              | 329141   |                 |                       |          |               |  |
| 10. Address of Operator  |                       |   |                        |  |              | 11. Pool name or Wildcat   |                 |                       |          |               |  |
| 113 Corporate Drive<br>Midland, TX 79705   |                       |   |                        |  |              | N Seven Rivers; Glorieta-Yeso  |                 |                       |          |               |  |
| 12. Location   | Unit Ltr              | Section   | Township               | Range  | Lot          | Feet from the  | N/S Line        | Feet from the         | E/W Line | County        |  |
| Surface:   | G                     | 22  | 20-S                   | 25-E   |              | 1980'  | North           | 1980'                 | East     | Eddy          |  |
| BH:  |                       |   |                        |  |              |  |                 |                       |          |               |  |
| 13. Date Spudded   | 14. Date T.D. Reached | 15. Date Rig Released   |                        | 16. Date Completed (Ready to Produce)  |              | 17. Elevations (DF and RKB, RT, GR, etc.)  |                 |                       |          |               |  |
| 02/08/2004   | 03/11/2004            | 12/11/2018  |                        | 12/5/2019  |              | 3445' GR   |                 |                       |          |               |  |
| 18. Total Measured Depth of Well   |                       | 19. Plug Back Measured Depth  |                        | 20. Was Directional Survey Made?   |              | 21. Type Electric and Other Logs Run   |                 |                       |          |               |  |
| 9800'  |                       | 2925'   |                        | no   |              | cement bond, casing inspect.   |                 |                       |          |               |  |
| 22. Producing Interval(s), of this completion - Top, Bottom, Name  |                       |   |                        |  |              |  |                 |                       |          |               |  |
| 2728' - 2802' / Glorieta-Yeso  |                       |   |                        |  |              |  |                 |                       |          |               |  |
| <b>CASING RECORD (Report all strings set in well)</b>  |                       |   |                        |  |              |  |                 |                       |          |               |  |
| CASING SIZE  |                       | WEIGHT LB./FT.  |                        | DEPTH SET  |              | HOLE SIZE  |                 | CEMENTING RECORD      |          | AMOUNT PULLED |  |
| 13 3/8"  |                       | 45#   |                        | 353'   |              | 17-1/2"  |                 | 713 sx - Class C      |          | Circ 10sx     |  |
| 8-5/8"   |                       | 24# J-55  |                        | 1483'  |              | 12-1/4"  |                 | 650 sx - Prem Plus    |          | Circ 90 sx    |  |
| 4-1/2"   |                       | 11.6# N-80  |                        | 9800'  |              | 7-7/8"   |                 | 1140 sx - Prem H      |          | Circ 34 sx    |  |
|  |                       |   |                        |  |              |  |                 |                       |          |               |  |
|  |                       |   |                        |  |              |  |                 |                       |          |               |  |
| 24. LINER RECORD   |                       |   |                        |  |              | 25. TUBING RECORD  |                 |                       |          |               |  |
| SIZE   | TOP                   | BOTTOM  | SACKS CEMENT           | SCREEN   |              | SIZE   | DEPTH SET       | PACKER SET            |          |               |  |
|  |                       |   |                        |  |              | 2-7/8" L-80  | 2559'           |                       |          |               |  |
|  |                       |   |                        |  |              | 2-3/8" L-80  | 2598'           | 2598'                 |          |               |  |
| 26. Perforation record (interval, size, and number)  |                       |   |                        |  |              | 27. ACID, SHOT, FRACTURE, CEMENT, SQUEEZE, ETC.  |                 |                       |          |               |  |
| 2728' - 2802' .042 56 shots  |                       |   |                        |  |              | DEPTH INTERVAL    AMOUNT AND KIND MATERIAL USED<br>2728'-2802'    2500 gals 15% HCL; 30,040, 100 Mesh; 162,020 40/70<br>47,980 30/50 |                 |                       |          |               |  |
| <b>PRODUCTION</b>  |                       |   |                        |  |              |  |                 |                       |          |               |  |
| Date First Production  |                       | Production Method (Flowing, gas lift, pumping - Size and type pump)   |                        |  |              | Well Status (Prod. or Shut-in)   |                 |                       |          |               |  |
| 12/05/2019   |                       | Pumping   |                        |  |              | Producing  |                 |                       |          |               |  |
| Date of Test   | Hours Tested          | Choke Size  | Prod'n For Test Period | Oil - Bbl  | Gas - MCF    | Water - Bbl.   | Gas - Oil Ratio |                       |          |               |  |
| 12/05/2019   | 24                    | open  |                        | 17   | 2            | 883  | 117-            |                       |          |               |  |
| Flow Tubing Press.   | Casing Pressure       | Calculated 24-Hour Rate   | Oil - Bbl.             | Gas - MCF  | Water - Bbl. | Oil Gravity - API - (Corr.)  |                 |                       |          |               |  |
|  | 225                   |   |                        |  |              | 37   |                 |                       |          |               |  |
| 29. Disposition of Gas (Sold, used for fuel, vented, etc.)   |                       |   |                        |  |              |  |                 | 30. Test Witnessed By |          |               |  |
| sold   |                       |   |                        |  |              |  |                 |                       |          |               |  |
| 31. List Attachments   |                       |   |                        |  |              |  |                 |                       |          |               |  |
| C-104, C-103, C-102, frac procedure, WBD, Cement Bond Log, Casing Inspection Log   |                       |   |                        |  |              |  |                 |                       |          |               |  |
| 32. If a temporary pit was used at the well, attach a plat with the location of the temporary pit.   |                       |   |                        |  |              |  |                 | 33. Rig Release Date: |          |               |  |
|  |                       |   |                        |  |              |  |                 |                       |          |               |  |
| 34. If an on-site burial was used at the well, report the exact location of the on-site burial:  |                       |   |                        |  |              |  |                 |                       |          |               |  |
|  |                       |   |                        |  |              |  |                 |                       |          |               |  |
| I hereby certify that the information shown on both sides of this form is true and complete to the best of my knowledge and belief<br>Signature: <i>Courtney Foster</i> Printed Name: Courtney Foster    Title: Regulatory Analyst    Date: 3/2/20<br>E-mail Address: cfoster@hexpresources.com  |                       |   |                        |  |              |  |                 |                       |          |               |  |