

STATE OF NEW MEXICO  
ENERGY AND MINERALS DEPARTMENT

OIL CONSERVATION DIVISION

P. O. BOX 2088

SANTA FE, NEW MEXICO

30-015-23948

Form C-101  
Revised 10-1-78

NO. OF COPIES RECEIVED	
DISTRIBUTION	
SANTA FE	1
FILE	1
U.S.G.S.	1
LAND OFFICE	1
OPERATOR	1

SEP 30 1981

5A. Indicate Type of Lease  
STATE ☐ FEDERAL ☒

5. State Oil & Gas Lease No.

APPLICATION FOR PERMIT TO DRILL, DEEPEN, OR PLUG BACK

Type of Work

Type of Well

DRILL ☒

DEEPEN ☒

PLUG BACK ☐

OIL WELL ☒

GAS WELL ☐

OTHER

SINGLE ZONE ☐

MULTIPLE ZONE ☐

Name of Operator

Yates Petroleum Corporation

Address of Operator

207 S. 4th Street, Artesia, NM 88210

Location of Well

UNIT LETTER E

LOCATED 2310

FEET FROM THE North

LINE

990

FEET FROM THE West

LINE OF SEC. 26

TWP. 18s

R. 26e

N.M.P.M.

7. Unit Agreement Name

8. Form or Lease Name

Platt "PA"

9. Well No.

6

10. Field and Pool, or Wildcat

Dayton-GA-Yeso

12. County

Eddy

19. Proposed Depth

Approx. 3600'

19A. Formation

Yeso

20. Rotary or C.T.

Rotary

Elevations (Show whether DL, KI, etc.)

3314' GL

21A. Kind & Status Plug Bond

Blanket

21B. Drilling Contractor

L & M #2

22. Approx. Date Work will start

ASAP

PROPOSED CASING AND CEMENT PROGRAM

SIZE OF HOLE	SIZE OF CASING	WEIGHT PER FOOT	SETTING DEPTH	SACKS OF CEMENT	EST. TOP
9 1/2"	7"	20#	1100' 9/10	525	
6 1/4"	4 1/2"	9.5#	TD	375	

Propos to drill and test the Yeso and intermediate formations. Casing will be set at least 100' below the Artesian Water Zone, and 4 1/2" production string will be set at TD, all casing circulated to the surface. Will perforate and stimulate as needed for production.

MUD PROGRAM: F.W. gel to 910', fresh water to TD.

BOP PROGRAM: BOP's will be installed on the 7" casing and tested.

APPROVAL VALID FOR 180 DAYS  
PERMIT EXPIRES 4-1-82  
UNLESS DRILLING UNDERWAY

ABOVE SPACE DESCRIBE PROPOSED PROGRAM; IF PROPOSAL IS TO DEEPEN OR PLUG BACK, GIVE DATA ON PRESENT PRODUCTIVE ZONE AND PROPOSED NEW PRODUCE ZONE. GIVE BLOWOUT PREVENTER PROGRAM, IF ANY.

I hereby certify that the information above is true and complete to the best of my knowledge and belief.

Signature Title Regulatory Manager Date 9-29-81

(This space for State Use)

APPROVED BY W.A. Gressett TITLE SUPERVISOR, DISTRICT II DATE OCT 1 1981

CONDITIONS OF APPROVAL, IF ANY:

Cement must be circulated to surface behind 7" 4 1/2" casing

Notify N.M.O.C.C. in sufficient time to witness cementing the 7" casing

NEW MEXICO OIL CONSERVATION COMMISSION  
WELL LOCATION AND ACREAGE DEDICATION PLAT

Form C-102  
Supersedes C-120  
Effective 1-1-65

All distances must be from the outer boundaries of the Section.

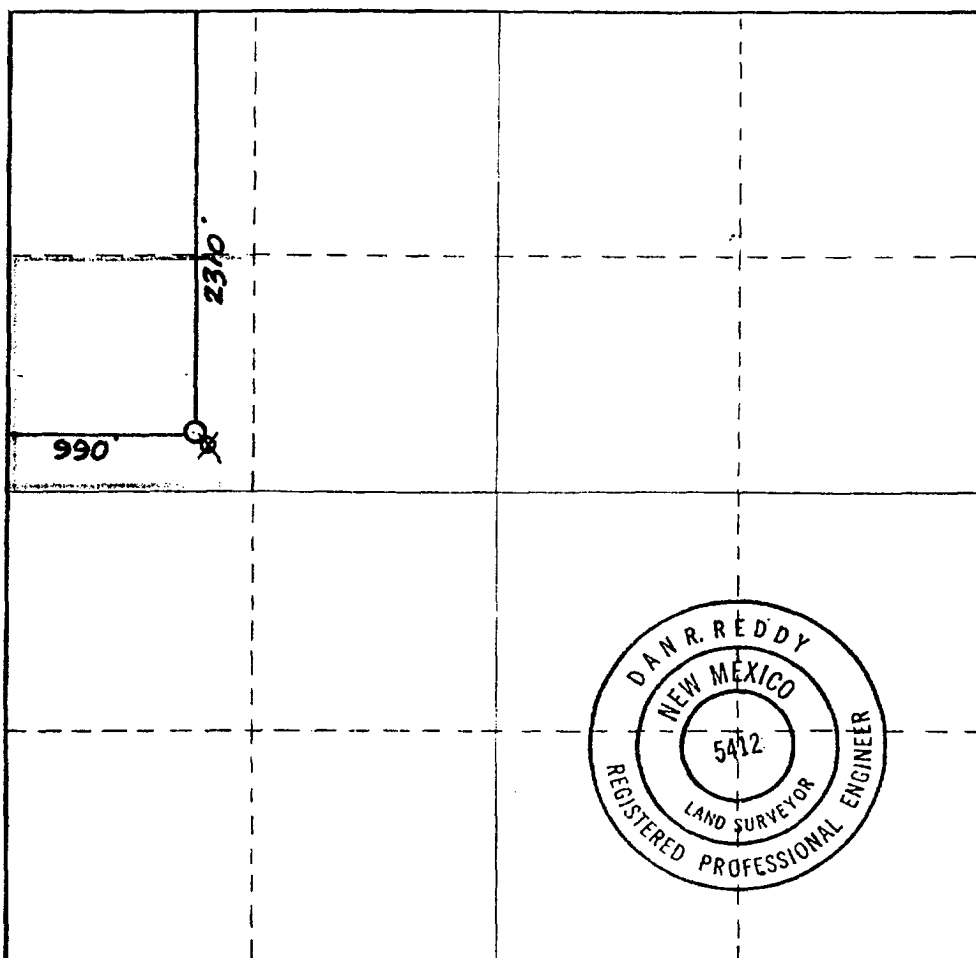
Operator <b>YATES PETROLEUM CORPORATION</b>			Lease <b>Platt PA</b>		Well No. <b>6</b>
Unit Letter <b>E</b>	Section <b>26</b>	Township <b>18 South</b>	Range <b>26 East</b>	County <b>Eddy</b>	
Actual Footage Location of Well: <b>2310</b> feet from the <b>North</b> line and <b>990</b> feet from the <b>West</b> line					
Ground Level Elev. <b>3314.</b>	Producing Formation <b>Zone</b>	Pool <b>Unit 12a</b> <b>HARTMAN ST-600</b>		Dedicated Acreage: <b>40</b> Acres	

1. Outline the acreage dedicated to the subject well by colored pencil or hatchure marks on the plat below.
2. If more than one lease is dedicated to the well, outline each and identify the ownership thereof (both as to working interest and royalty).
3. If more than one lease of different ownership is dedicated to the well, have the interests of all owners been consolidated by communitization, unitization, force-pooling, etc?

☐ Yes ☒ No If answer is "yes," type of consolidation \_\_\_\_\_

If answer is "no," list the owners and tract descriptions which have actually been consolidated. (Use reverse side of this form if necessary.) \_\_\_\_\_

No allowable will be assigned to the well until all interests have been consolidated (by communitization, unitization, forced-pooling, or otherwise) or until a non-standard unit, eliminating such interests, has been approved by the Commission.



CERTIFICATION

I hereby certify that the information contained herein is true and complete to the best of my knowledge and belief.

*[Signature]*  
Name

*GLORIA RODRIGUEZ*  
Position

*[Signature]*  
Company

*[Signature]*  
Date

*9-30-81*

I hereby certify that the well location shown on this plat was plotted from field notes of actual surveys made by me or under my supervision, and that the same is true and correct to the best of my knowledge and belief.

Date Surveyed

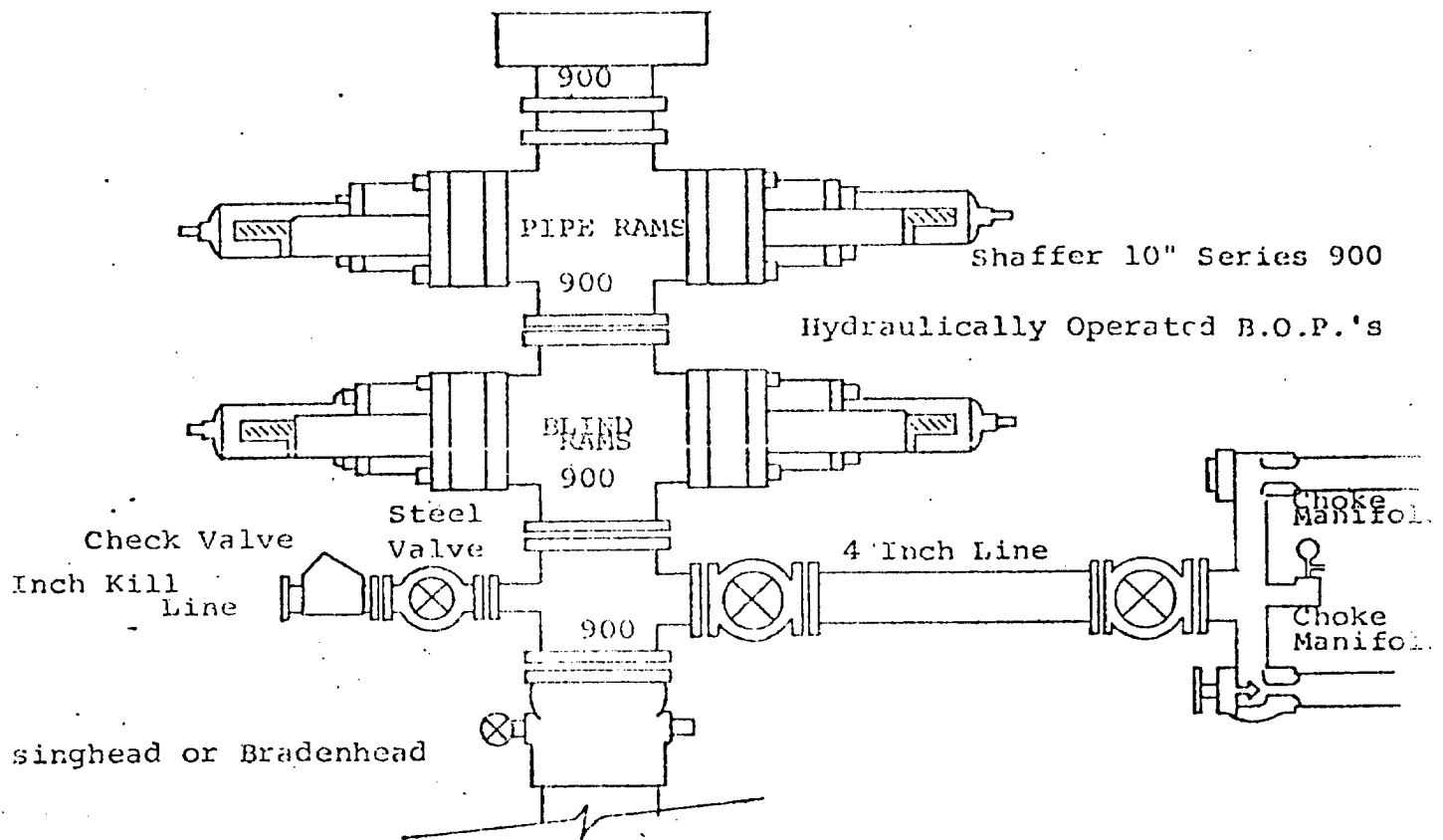
**September 26, 1981**

Registered Professional Engineer  
and/or Land Surveyor

*[Signature]*  
Certificate No.

**NM PE&LS #5412**

0 330 660 990 1320 1650 1980 2310 2640 2970 3300 3630 3960 4290 4620 4950 5280 5610 5940 6270 6600



THE FOLLOWING CONSTITUTE MINIMUM BLOWOUT PREVENTER REQUIREMENTS

1. All preventers to be hydraulically operated with secondary manual control installed prior to drilling out from under casing.
2. Choke outlet to be a minimum of 4" diameter.
3. Kill line to be of all steel construction of 2" minimum diameter.
4. All connections from operating manifolds to preventers to be all steel. hole or tube a minimum of one inch in diameter.
5. The available closing pressure shall be at least 15% in excess of that required with sufficient volume to operate the B.O.P.'s.
6. All connections to and from preventer to have a pressure rating equivalent to that of the B.O.P.'s.
7. Inside blowout preventer to be available on rig floor.
8. Operating controls located a safe distance from the rig floor.
9. Hole must be kept filled on trips below intermediate casing. Operator not responsible for blowouts resulting from not keeping hole full.
10. D. P. float must be installed and used below zone of first gas intrusion.