

DISTRICT I
1625 N. French Dr., Hobbs, NM 88240

DISTRICT II
811 South First, Artesia, NM 88210

DISTRICT III
1000 Rio Brazos Rd., Aztec, NM 87410

DISTRICT IV
2040 South Pacheco, Santa Fe, NM 87505

State of New Mexico
Energy, Minerals and Natural Resources Department

Form C-102
Revised March 17, 1999

Submit to Appropriate District Office
State Lease - 4 Copies
Fee Lease - 3 Copies

OIL CONSERVATION DIVISION

2040 South Pacheco
Santa Fe, New Mexico 87504-2088

☐ AMENDED REPORT

WELL LOCATION AND ACREAGE DEDICATION PLAT

API Number	Pool Code 47545	Pool Name NASH DRAW - DELAWARE / Bone Spring (Avenue Sand)
Property Code 001796	Property Name POKER LAKE UNIT	Well Number 227
GRID No. 001801	Operator Name BASS ENTERPRISES PRODUCTION COMPANY	Elevation 3218'

Surface Location

UL or lot No.	Section	Township	Range	Lot Idn	Feet from the	North/South line	Feet from the	East/West line	County
P	30	24 S	30 E		330	SOUTH	560	EAST	EDDY

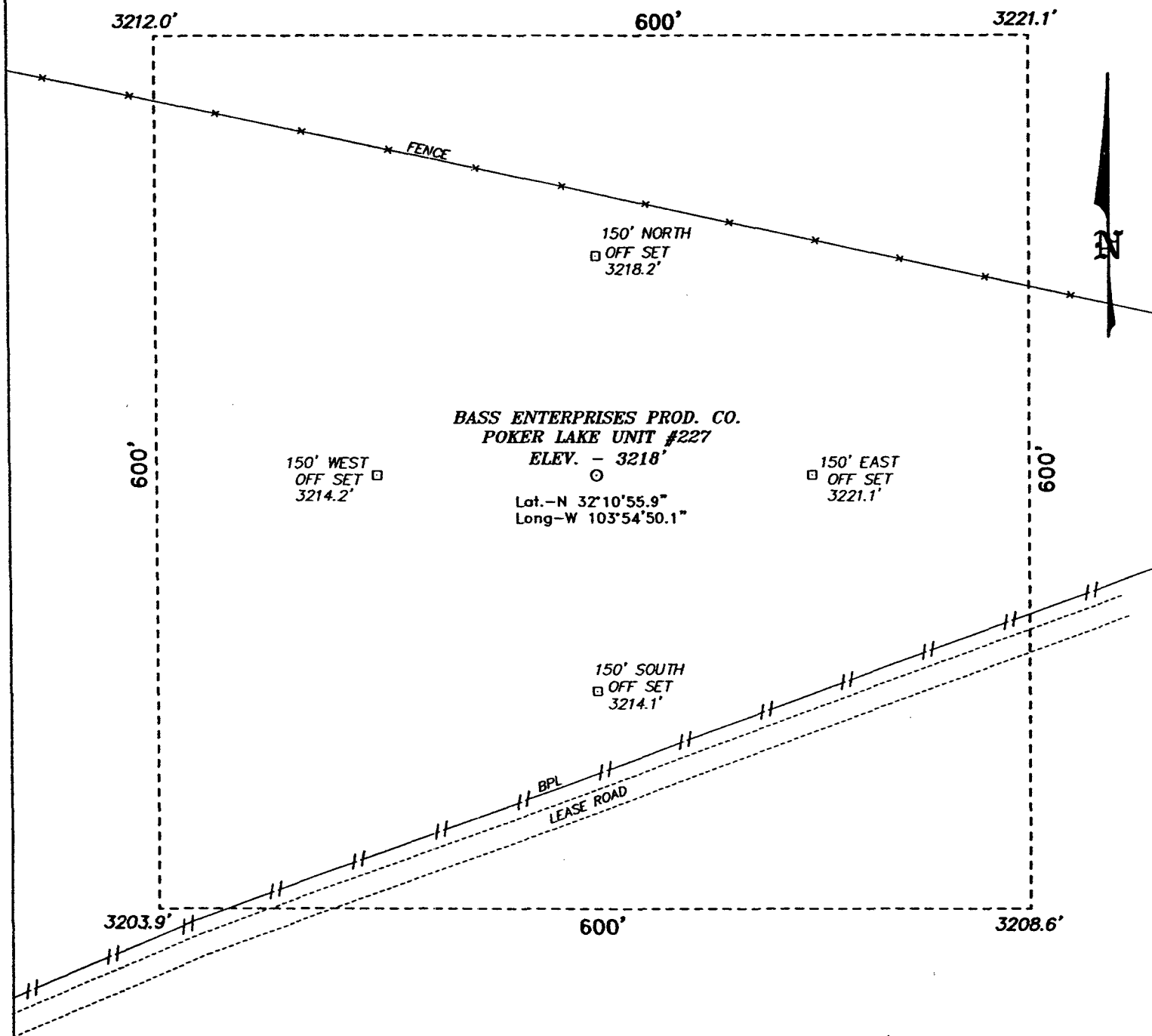
Bottom Hole Location If Different From Surface

UL or lot No.	Section	Township	Range	Lot Idn	Feet from the	North/South line	Feet from the	East/West line	County
Dedicated Acres 40	Joint or Infill I	Consolidation Code	Order No.						

NO ALLOWABLE WILL BE ASSIGNED TO THIS COMPLETION UNTIL ALL INTERESTS HAVE BEEN CONSOLIDATED
OR A NON-STANDARD UNIT HAS BEEN APPROVED BY THE DIVISION

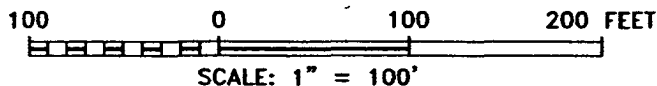
<p>RECEIVED OCT 31 2005 OIL & GAS</p>				<p>OPERATOR CERTIFICATION</p> <p>I hereby certify the the information contained herein is true and complete to the best of my knowledge and belief.</p> <p><i>William R. Dannels</i> Signature W.R. DANNELS Printed Name DIVISION DRILLING SUPT. Title 12/28/04 Date</p>	
LOT 1 40.62 acres	40.62 acres	40.72 acres	40.72 acres	<p>SURVEYOR CERTIFICATION</p> <p>I hereby certify that the well location shown on this plat was plotted from field notes of actual surveys made by me or under my supervision, and that the same is true and correct to the best of my belief.</p> <p>NOVEMBER 24, 2004</p> <p>Date Surveyed</p>	
LOT 2 40.63 acres	40.63 acres	40.71 acres	40.71 acres	<p>Signature & Seal of Professional Surveyor</p> <p>NEW MEXICO</p> <p>W.O. No. 4783</p> <p>Certified No. Gary L. Jones 7977</p>	
LOT 3 40.65 acres	40.65 acres	40.69 acres	40.69 acres	<p>LAT - N32°10'55.9" LONG - W103°54'50.1"</p> <p>3212.0' 3221.1'</p> <p>560' 3208.6'</p>	
LOT 4 40.66 acres	40.66 acres	40.68 acres	40.68 acres	<p>3208.9' 3208.6'</p>	

SECTION 30, TOWNSHIP 24 SOUTH, RANGE 30 EAST, N.M.P.M.,
EDDY COUNTY, NEW MEXICO.



DIRECTIONS TO LOCATION:

FROM THE JUNCTION OF CO. R. 793 AND STATE HWY 128, GO SOUTH ON 793 FOR APPROX. 4.0 MILES TO LEASE ROAD; THENCE EAST ON LEASE ROAD FOR 0.25 MILE; THENCE SOUTH 0.9 MILE; THENCE EAST 0.3 MILE; THENCE SOUTHERLY FOR APPROX. 5.0 MILES; THENCE WESTERLY FOR 1.2 MILE TO CO. RD. 748; THENCE SOUTHEASTERLY FOR APPROX. 2.1 MILES TO LEASE ROAD; THENCE WESTERLY FOR 0.25 MILE TO PROPOSED LOCATION.



BASS ENTERPRISES PRODUCTION CO.

REF: POKER LAKE UNIT No. 227 / Well Pad Topo

THE POKER LAKE UNIT No. 227 LOCATED 330' FROM
THE SOUTH LINE AND 560' FROM THE EAST LINE OF
SECTION 30, TOWNSHIP 24 SOUTH, RANGE 30 EAST,
N.M.P.M., EDDY COUNTY, NEW MEXICO.

BASIN SURVEYS P.O. BOX 1786-HOBBS, NEW MEXICO

W.O. Number: 4783

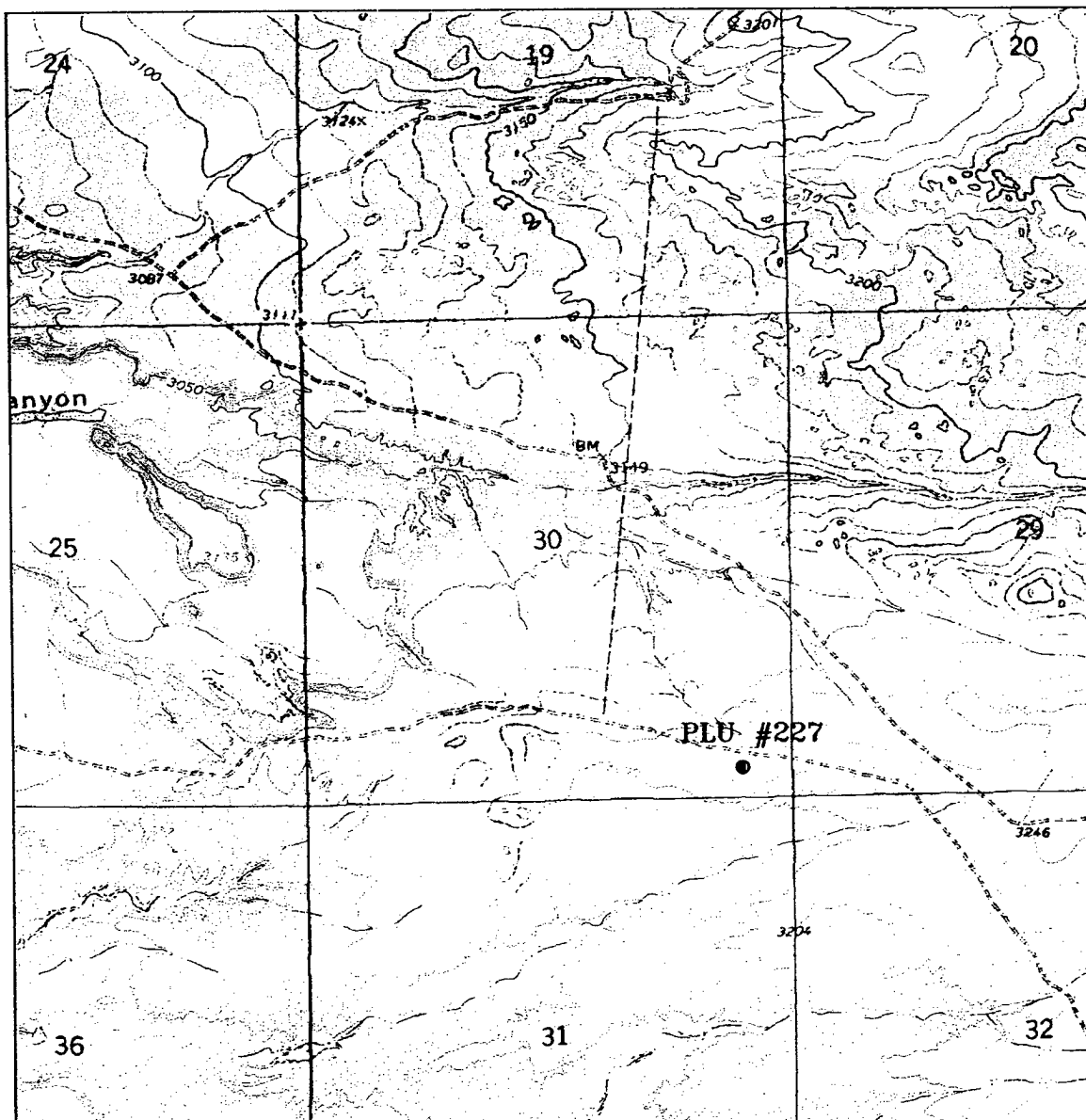
Drawn By: K. GOAD

Date: 11-29-2004

Disk: KJG CD#7 - 4783A.DWG

Survey Date: 11-24-2004

Sheet 1 of 1 Sheets



POKER LAKE UNIT #227

Located at 330' FSL and 560' FEL
 Section 30, Township 24 South, Range 30 East,
 N.M.P.M., Eddy County, New Mexico.



focused on excellence
 in the oilfield

P.O. Box 1786
 1120 N. West County Rd.
 Hobbs, New Mexico 88241
 (505) 393-7316 - Office
 (505) 392-3074 - Fax
 basinsurveys.com

W.O. Number: 4783AA - KJG #7

Survey Date: 11-24-2004

Scale: 1" = 2000'

Date: 11-29-2004

**BASS ENTERPRISES
 PRODUCTION CO.**

