

DISTRICT I
1825 N. French Dr., Hobbs, NM 88240

DISTRICT II
811 South First, Artesia, NM 88210

DISTRICT III
1000 Rio Brazos Rd., Aztec, NM 87410

DISTRICT IV
2040 South Pacheco, Santa Fe, NM 87505

State of New Mexico
Energy, Minerals and Natural Resources Department

Form C-102
Revised March 17, 1999

Submit to Appropriate District Office
State Lease - 4 Copies
Fee Lease - 3 Copies

OIL CONSERVATION DIVISION

2040 South Pacheco
Santa Fe, New Mexico 87504-2088

☐ AMENDED REPORT

WELL LOCATION AND ACREAGE DEDICATION PLAT

API Number	Pool Code	Pool Name
	47545	NASH DRAW-DELAWARE / Brae Spring Cavalon Sand
Property Code	Property Name	Well Number
001796	POKER LAKE UNIT	232
OGRIID No.	Operator Name	Elevation
001301	BASS ENTERPRISES PRODUCTION COMPANY	3162'

Surface Location

UL or lot No.	Section	Township	Range	Lot Idn	Feet from the	North/South line	Feet from the	East/West line	County
D	31	24 S	30 E		990	NORTH	990	WEST	EDDY

Bottom Hole Location If Different From Surface

UL or lot No.	Section	Township	Range	Lot Idn	Feet from the	North/South line	Feet from the	East/West line	County
Dedicated Acres	Joint or Infill	Consolidation Code	Order No.						
40	I								

NO ALLOWABLE WILL BE ASSIGNED TO THIS COMPLETION UNTIL ALL INTERESTS HAVE BEEN CONSOLIDATED
OR A NON-STANDARD UNIT HAS BEEN APPROVED BY THE DIVISION

LOT 2 40.61 acres	40.64 acres	40.59 acres	40.62 acres
LOT 3 40.57 acres	40.60 acres	40.63 acres	40.66 acres
LOT 4 40.53 acres	40.56 acres	40.67 acres	40.70 acres

RECEIVED
OCT 06 2005
OCC-ARTESIA

OPERATOR CERTIFICATION

I hereby certify the the information contained herein is true and complete to the best of my knowledge and belief.

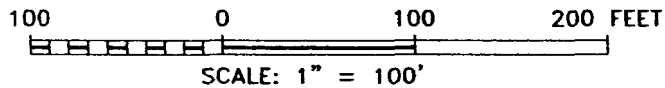
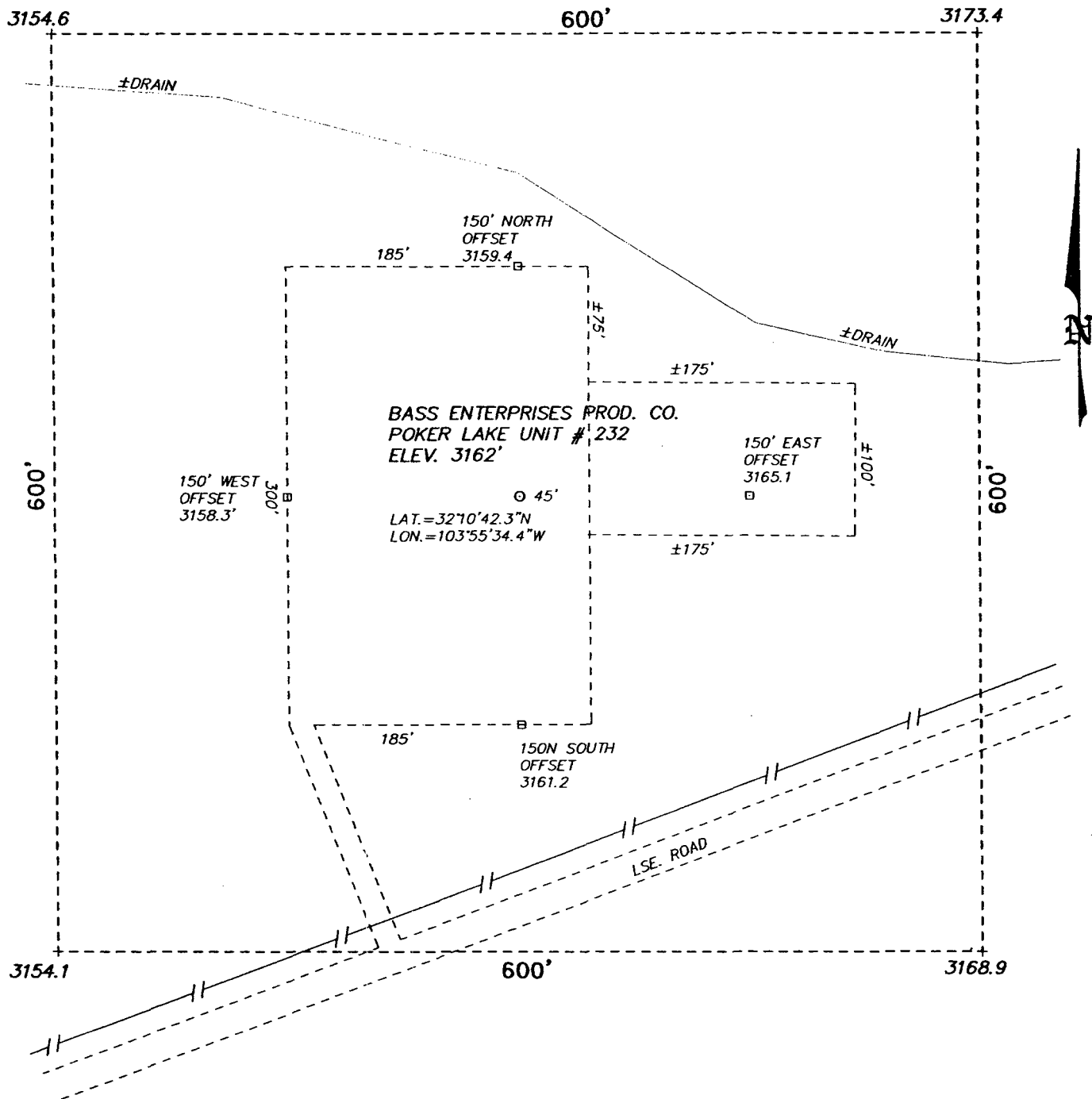
William R. Dannels
Signature
W.R. DANNELS
Printed Name
DIVISION DRILLING SUPT.
Title
1-20-05
Date

SURVEYOR CERTIFICATION

I hereby certify that the well location shown on this plat was plotted from field notes of actual surveys made by me or under my supervision, and that the same is true and correct to the best of my belief.

JANUARY 13, 2005
Date Surveyed
Signature of Gary L. Jones
Professional Surveyor
W.O. No. 4946
Certificate No. Gary L. Jones 7977
BASIN SURVEYS

SECTION 31, TOWNSHIP 24 SOUTH, RANGE 30 EAST, N.M.P.M.,
EDDY COUNTY, NEW MEXICO.



BASS ENTERPRISES PRODUCTION CO.

REF: POKER LAKE UNIT No. 232 / Well Pad Topo

THE POKER LAKE UNIT No. 232 LOCATED 990' FROM
THE WEST LINE AND 990' FROM THE NORTH LINE OF
SECTION 31, TOWNSHIP 24 SOUTH, RANGE 30 EAST,
N.M.P.M., EDDY COUNTY, NEW MEXICO.

BASIN SURVEYS P.O. BOX 1786-HOBBS, NEW MEXICO

W.O. Number: 4946

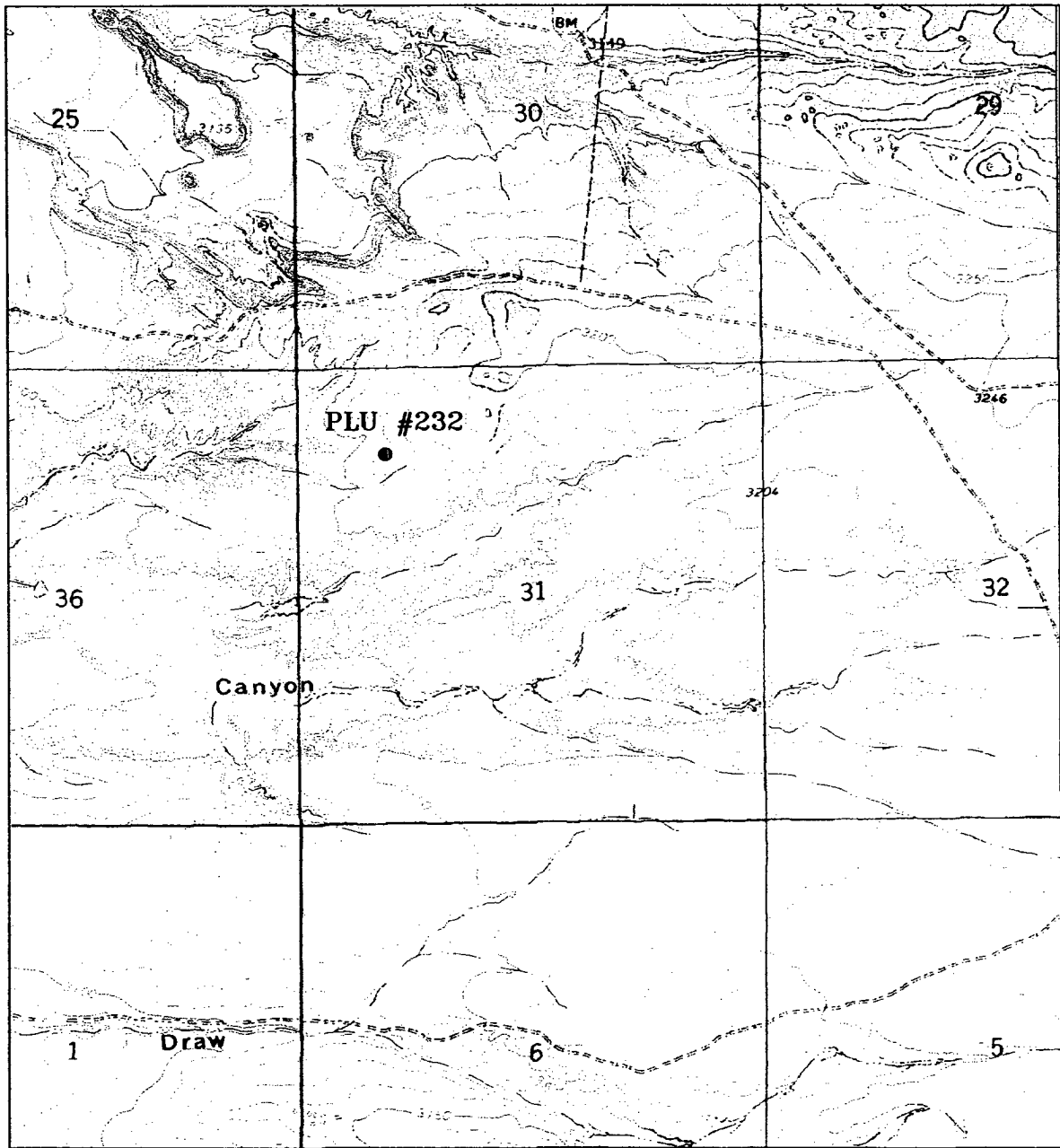
Drawn By: GWS

Date: 01-12-05

Disk: BASS4946

Survey Date: 01-12-05

Sheet 1 of 1 Sheets



POKER LAKE UNIT #232

Located at 990' FNL and 990' FWL
 Section 31, Township 24 South, Range 30 East,
 N.M.P.M., Eddy County, New Mexico.



focused on excellence
 in the oilfield

P.O. Box 1786
 1120 N. West County Rd.
 Hobbs, New Mexico 88241
 (505) 393-7316 - Office
 (505) 392-3074 - Fax
 basinsurveys.com

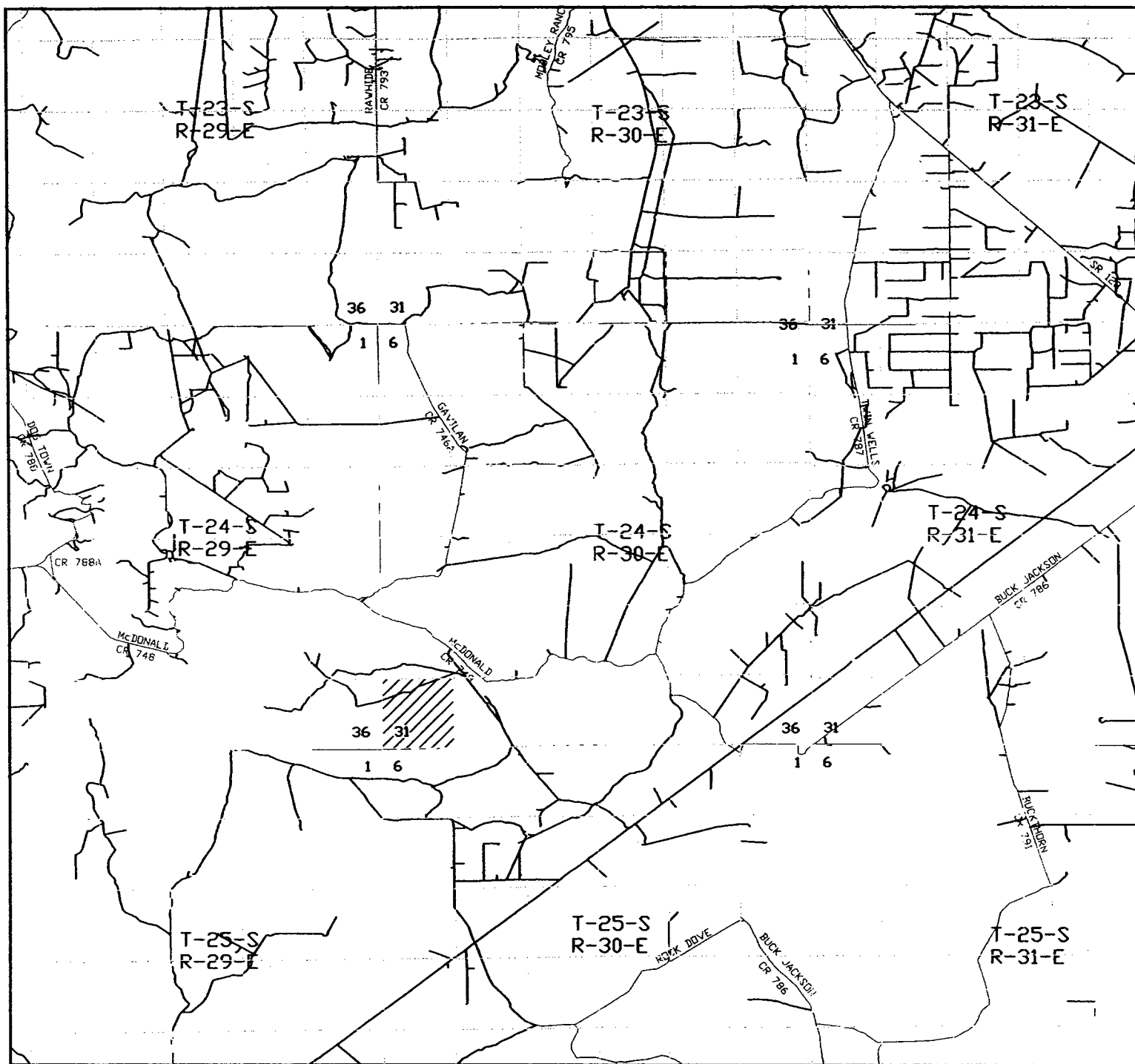
W.O. Number: 4946AA - KJG #7

Survey Date: 01-12-2005

Scale: 1" = 2000'

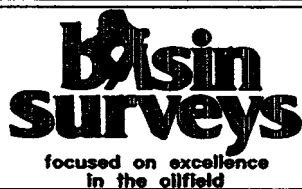
Date: 01-13-2005

**BASS ENTERPRISES
 PRODUCTION CO.**



POKER LAKE UNIT #232

Located at 990' FNL and 990' FWL
Section 31, Township 24 South, Range 30 East,
N.M.P.M., Eddy County, New Mexico.



P.O. Box 1786
1120 N. West County Rd.
Hobbs, New Mexico 88241
(505) 393-7316 - Office
(505) 392-3074 - Fax
basinsurveys.com

W.O. Number: 4946AA - KJG #7

Survey Date: 01-12-2005

Scale: 1" = 2 MILES

Date: 01-13-2005

**BASS ENTERPRISES
PRODUCTION CO.**