

DISTRICT I
1625 N. French Dr., Hobbs, NM 88240

DISTRICT II
811 South First, Artesia, NM 88210

DISTRICT III
1000 Rio Brazos Rd., Aztec, NM 87410

DISTRICT IV
2040 South Pacheco, Santa Fe, NM 87505

State of New Mexico
Energy, Minerals and Natural Resources Department

Form C-102
Revised March 17, 1999

Submit to Appropriate District Office
State Lease - 4 Copies
Fee Lease - 3 Copies

OIL CONSERVATION DIVISION

2040 South Pacheco
Santa Fe, New Mexico 87504-2088

☐ AMENDED REPORT

WELL LOCATION AND ACREAGE DEDICATION PLAT

API Number 30-DIS-34105	Pool Code 47545	Pool Name NASH DRAW DELAWARE / Bone Spring (Avenue)
Property Code 001796	Property Name POKER LAKE UNIT	Well Number 226
OGRID No. 001801	Operator Name BASS ENTERPRISES PRODUCTION COMPANY	Elevation 3212'

Surface Location

UL or lot No.	Section	Township	Range	Lot Idn	Feet from the	North/South line	Feet from the	East/West line	County
M	17	24 S	30 E		760	SOUTH	760	WEST	EDDY

Bottom Hole Location If Different From Surface

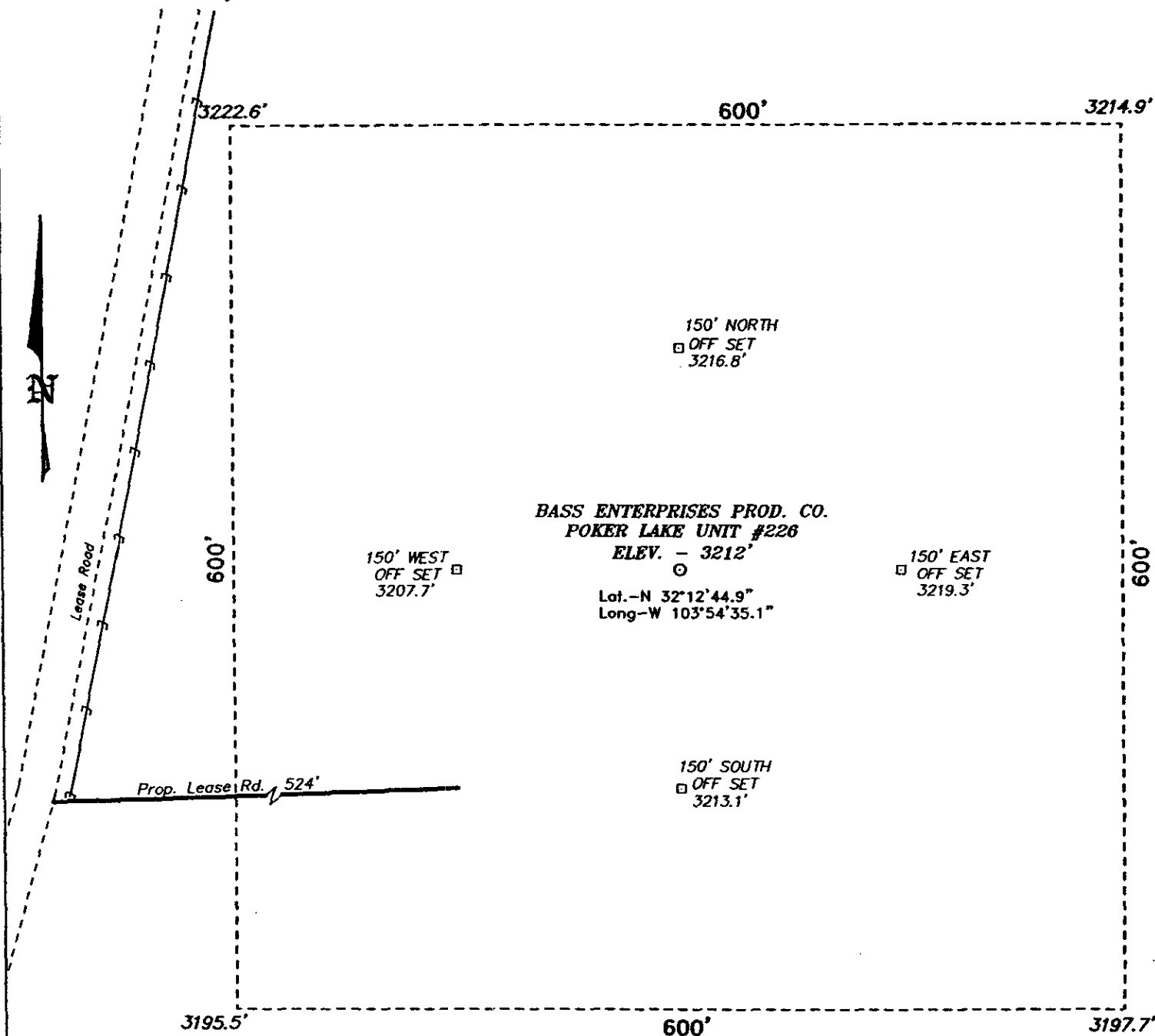
UL or lot No.	Section	Township	Range	Lot Idn	Feet from the	North/South line	Feet from the	East/West line	County

Dedicated Acres	Joint or Infill	Consolidation Code	Order No.
40	N		

NO ALLOWABLE WILL BE ASSIGNED TO THIS COMPLETION UNTIL ALL INTERESTS HAVE BEEN CONSOLIDATED
OR A NON-STANDARD UNIT HAS BEEN APPROVED BY THE DIVISION

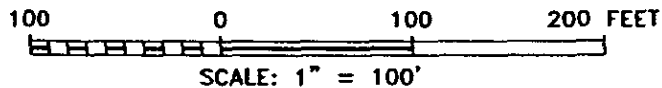
	<p>160 AC.</p> <p>160 AC.</p> <p>160 AC.</p> <p>160 AC.</p>	<p>RECEIVED</p> <p>NOV 22 2005</p> <p>OCU-AMT/ESM</p>	<p>OPERATOR CERTIFICATION</p> <p>I hereby certify the the information contained herein is true and complete to the best of my knowledge and belief.</p> <p><i>William R. Dannels</i></p> <p>Signature</p> <p>W.R. DANNELS</p> <p>Printed Name</p> <p>DIVISION DRILLING SUPT.</p> <p>Title</p> <p>3/5/05</p> <p>Date</p>
			<p>SURVEYOR CERTIFICATION</p> <p>I hereby certify that the well location shown on this plat was plotted from field notes of actual surveys made by me or under my supervision and that the same is true and correct to the best of my belief.</p> <p>NOVEMBER 24, 2004</p> <p>Date Surveyed</p> <p><i>Gary L. Jones</i></p> <p>Signature & Seal of O&N's Professional Surveyor</p> <p>NEW MEXICO</p> <p>7977</p> <p>No. 4782</p> <p>Certificate No. Gary L. Jones 7977</p> <p>PROFESSIONAL LAND SURVEYOR</p>

**SECTION 17, TOWNSHIP 24 SOUTH, RANGE 30 EAST, N.M.P.M.,
EDDY COUNTY, NEW MEXICO.**



DIRECTIONS TO LOCATION:

FROM THE JUNCTION OF CO. R. 793 AND STATE HWY 128, GO SOUTH ON 793 FOR APPROX. 4.0 MILES TO LEASE ROAD; THENCE EAST ON LEASE ROAD FOR 0.25 MILE; THENCE SOUTH 0.9 MILE; THENCE EAST 0.3 MILE; THENCE SOUTHERLY FOR APPROX. 4.4 MILES TO PROPOSED LEASE ROAD.



BASIN SURVEYS P.O. BOX 1786-HOBBS, NEW MEXICO

W.O. Number: 4782 Drawn By: K. GOAD

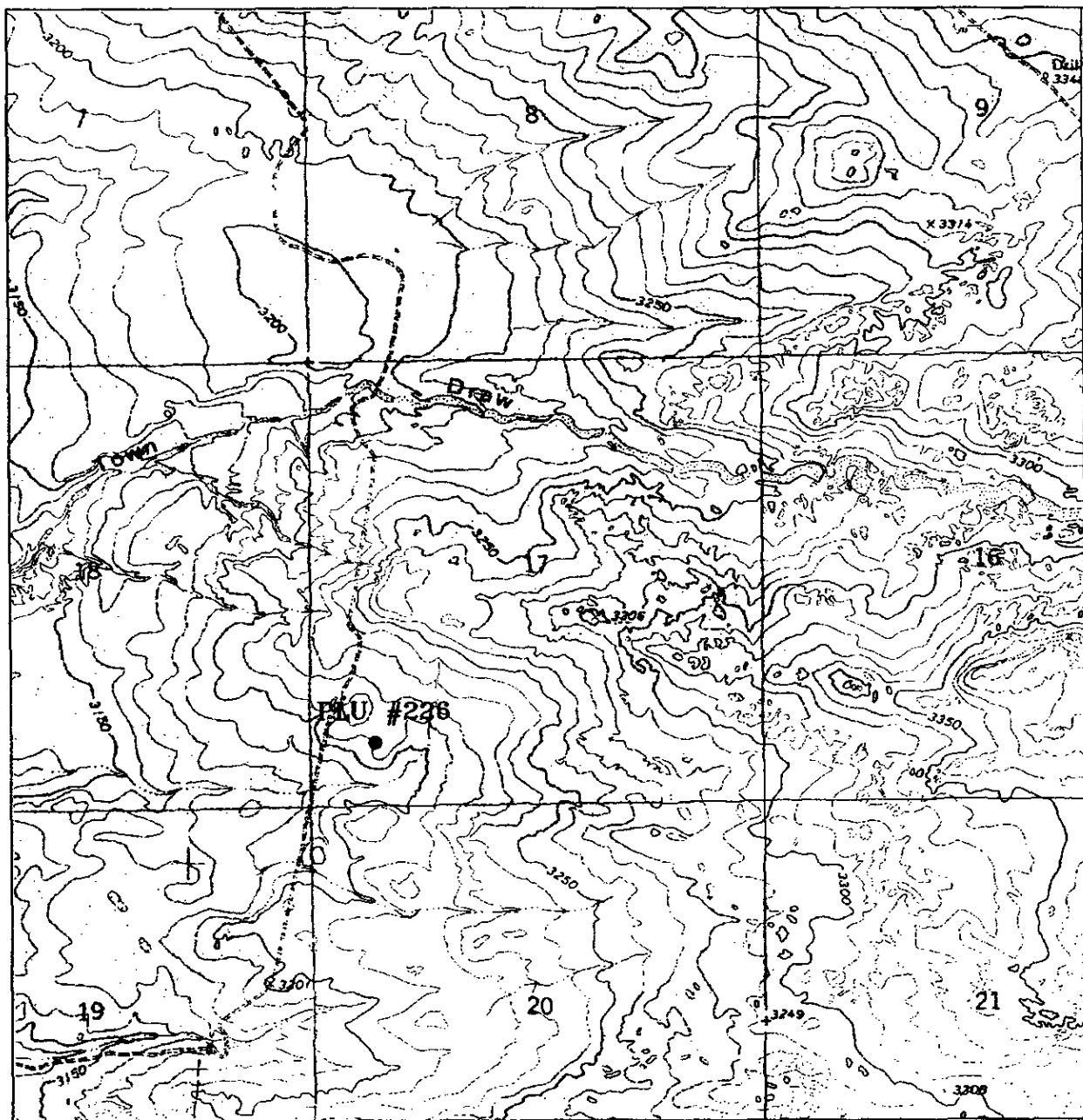
Date: 11-29-2004 Disk: KJG CD#7 - 4782A.DWG

BASS ENTERPRISES PRODUCTION CO.

REF: POKER LAKE UNIT No. 226 / Well Pad Topo

THE POKER LAKE UNIT No. 226 LOCATED 760' FROM
THE SOUTH LINE AND 760' FROM THE WEST LINE OF
SECTION 17, TOWNSHIP 24 SOUTH, RANGE 30 EAST,
N.M.P.M., EDDY COUNTY, NEW MEXICO.

Survey Date: 11-24-2004 Sheet 1 of 1 Sheets



POKER LAKE UNIT #226

Located at 760' FSL and 760' FWL
 Section 17, Township 24 South, Range 30 East,
 N.M.P.M., Eddy County, New Mexico.

basin
surveys

focused on excellence
 in the oilfield

P.O. Box 1786
 1120 N. West County Rd.
 Hobbs, New Mexico 88241
 (505) 393-7316 - Office
 (505) 392-3074 - Fax
 basinsurveys.com

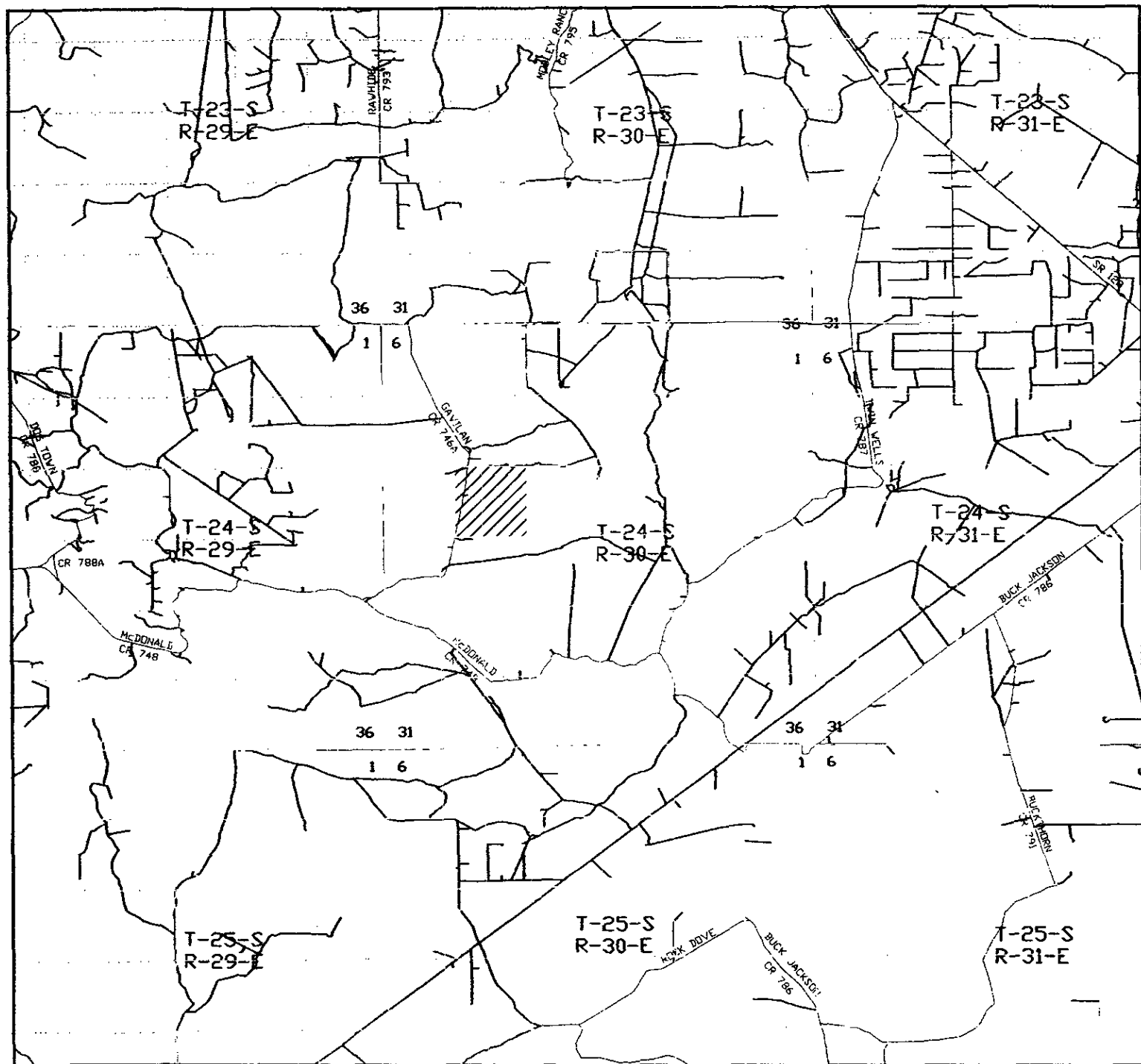
W.O. Number: 4782AA - KJG #7

Survey Date: 11-24-2004

Scale: 1" = 2000'

Date: 11-29-2004

**BASS ENTERPRISES
 PRODUCTION CO.**



POKER LAKE UNIT #226

Located at 760' FSL and 760' FWL

Section 17, Township 24 South, Range 30 East,
N.M.P.M., Eddy County, New Mexico.

basin
surveys

focused on excellence
in the oilfield

P.O. Box 1786
1120 N. West County Rd.
Hobbs, New Mexico 88241
(505) 393-7316 - Office
(505) 392-3074 - Fax
basinsurveys.com

W.O. Number: 4782AA - KJG #7

Survey Date: 11-24-2004

Scale: 1" = 2 MILES

Date: 11-29-2004

BASS ENTERPRISES
PRODUCTION CO.