

DISTRICT I
1625 N. French Dr., Hobbs, NM 88240

DISTRICT II
811 South First, Artesia, NM 88210

State of New Mexico
Energy, Minerals and Natural Resources Department

Form C-102
Revised March 17, 1999

Submit to Appropriate District Office
State Lease - 4 Copies
Fee Lease - 3 Copies

DISTRICT III
1000 Rio Brazos Rd., Aztec, NM 87410

DISTRICT IV
2040 South Pacheco, Santa Fe, NM 87505

OIL CONSERVATION DIVISION

2040 South Pacheco
Santa Fe, New Mexico 87504-2088

☐ AMENDED REPORT

WELL LOCATION AND ACREAGE DEDICATION PLAT

API Number 30-015-34123	Pool Code 47545	Pool Name NASH DRAW DELAWARE / Bear Spring Cavalon Sand
Property Code 001796	Property Name POKER LAKE UNIT	Well Number 222
OGRID No. 001801	Operator Name BASS ENTERPRISES PRODUCTION COMPANY	Elevation 3134'

Surface Location

UL or lot No.	Section	Township	Range	Lot Idn	Feet from the	North/South line	Feet from the	East/West line	County
N	19	24 S	30 E		510	SOUTH	1980	WEST	EDDY

Bottom Hole Location If Different From Surface

UL or lot No.	Section	Township	Range	Lot Idn	Feet from the	North/South line	Feet from the	East/West line	County

Dedicated Acres	Joint or Infill	Consolidation Code	Order No.
40	I		

NO ALLOWABLE WILL BE ASSIGNED TO THIS COMPLETION UNTIL ALL INTERESTS HAVE BEEN CONSOLIDATED
OR A NON-STANDARD UNIT HAS BEEN APPROVED BY THE DIVISION

<p>RECEIVED DEC - 7 2005 OCD/ARTESIA</p>				<p>OPERATOR CERTIFICATION</p> <p>I hereby certify the the information contained herein is true and complete to the best of my knowledge and belief.</p> <p><i>William R. Dannels</i> Signature W.R. DANNELS Printed Name DIVISION DRILLING SUPT. Title 2/4/05 Date</p>	
LOT 1 - 40.77 AC.	40.66 AC.	40.65 AC.	40.65 AC.	<p>SURVEYOR CERTIFICATION</p> <p>I hereby certify that the well location shown on this plat was plotted from field notes of actual surveys made by me or under my supervision and that the same is true and correct to the best of my belief.</p> <p>APRIL 15, 2004 Date Surveyed Signature & Seal of Professional Surveyor GARY L. JONES Certificate No. Gory L. Jones 7977 BASIN SURVEYS</p>	
LOT 2 - 40.87 AC.	40.69 AC.	40.68 AC.	40.66 AC.		
LOT 3 - 40.94 AC.	40.69 AC.	40.68 AC.	40.67 AC.		
LOT 4 - 41.06 AC.	40.73 AC.	40.70 AC.	40.70 AC.		

Diagram showing well location and acreage with dimensions:

1980' (horizontal distance)

3140.3' (vertical distance)

3149.5' (vertical distance)

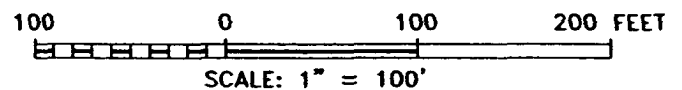
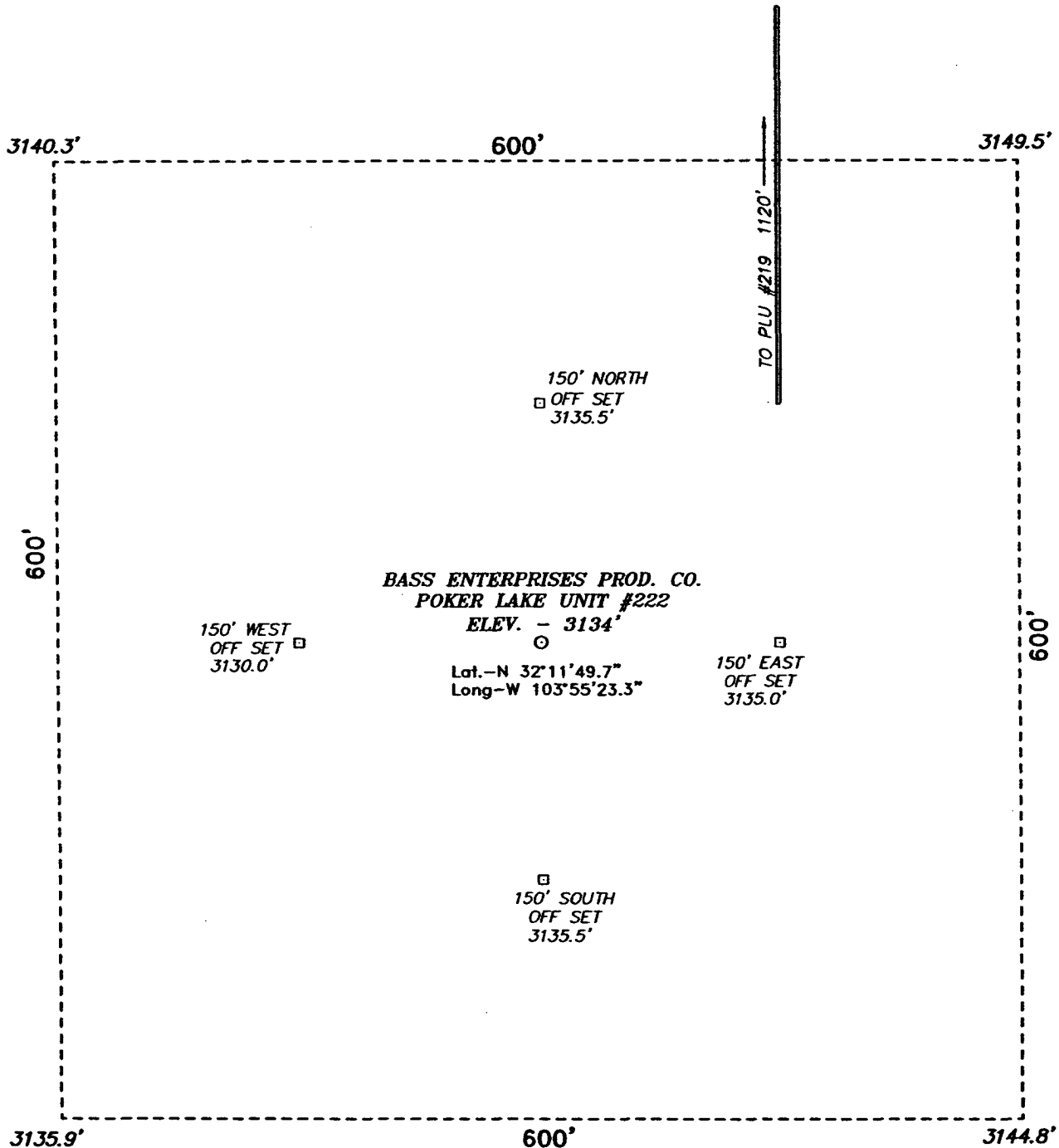
3135.9' (vertical distance)

3144.8' (vertical distance)

LAT - N32°11'49.7"

LONG - W103°55'23.3"

**SECTION 19, TOWNSHIP 24 SOUTH, RANGE 30 EAST, N.M.P.M.,
EDDY COUNTY, NEW MEXICO.**



DIRECTIONS TO LOCATION:

FROM THE JUNCTION OF CO. RD. 746A AND CO. RD. 748, GO EASTERLY ON CO. RD. 746A FOR APPROX. 0.25 MILE TO A POINT ON THE PROPOSED PLU #219 WELL PAD AND THE PROPOSED LEASE ROAD TO THE PLU #222.

BASIN SURVEYS P.O. BOX 1786 - HOBBS, NEW MEXICO

W.O. Number: 4149 Drawn By: K. GOAD

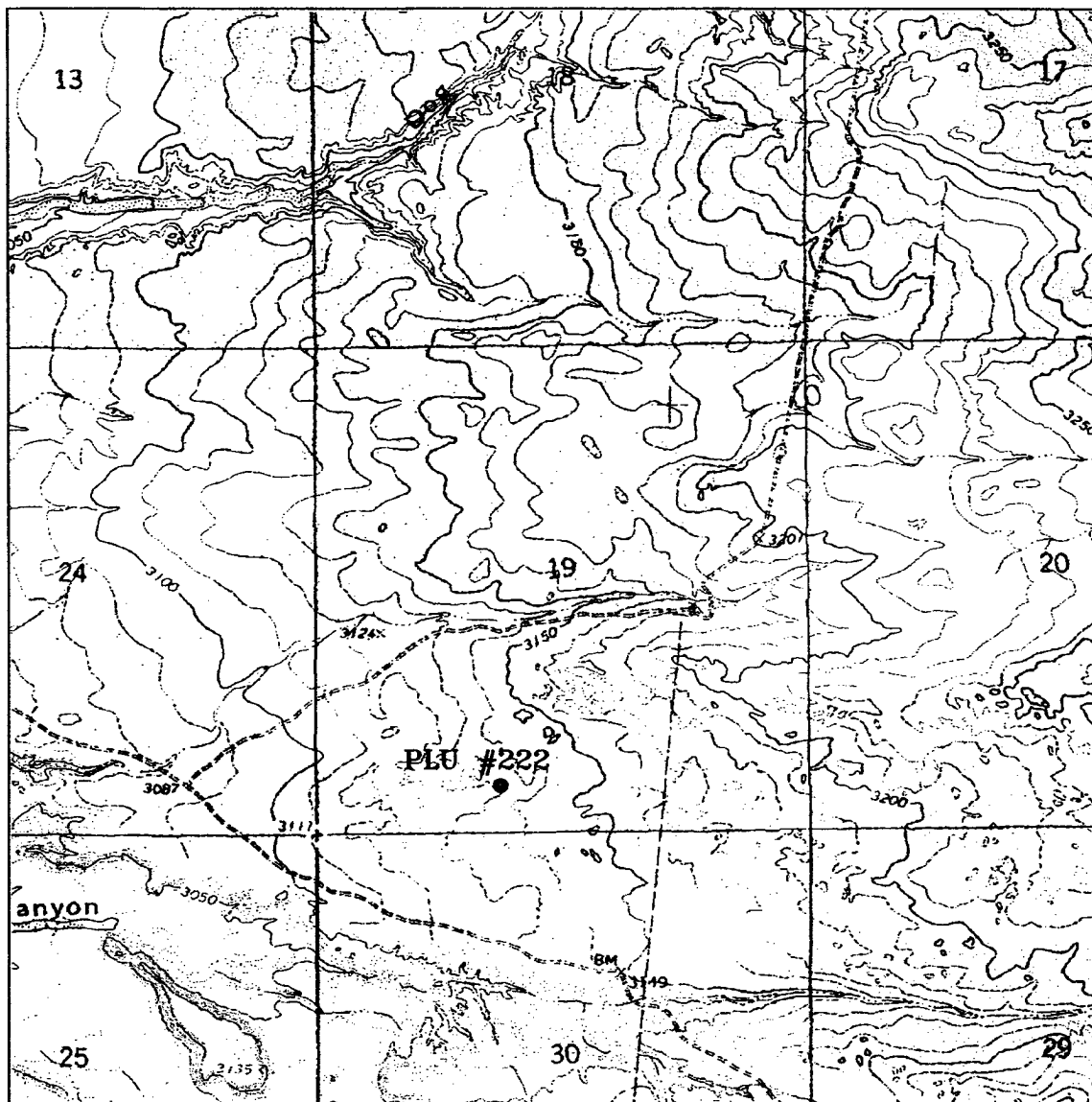
Date: 04-23-2004 Disk: KJG CD#7 - 4149A.DWG

BASS ENTERPRISES PRODUCTION CO.

REF: POKER LAKE UNIT No. 222 / Well Pad Topo

THE POKER LAKE UNIT No. 222 LOCATED 510' FROM
THE SOUTH LINE AND 1980' FROM THE WEST LINE OF
SECTION 19, TOWNSHIP 24 SOUTH, RANGE 30 EAST,
N.M.P.M., EDDY COUNTY, NEW MEXICO.

Survey Date: 04-15-2004 Sheet 1 of 1 Sheets



POKER LAKE UNIT #222

Located at 510' FSL and 1980' FWL
 Section 19, Township 24 South, Range 30 East,
 N.M.P.M., Eddy County, New Mexico.

basin
surveys

focused on excellence
 in the oilfield

P.O. Box 1786
 1120 N. West County Rd.
 Hobbs, New Mexico 88241
 (505) 393-7316 - Office
 (505) 392-3074 - Fax
 basinsurveys.com

W.O. Number: 4149AA - KJG #7

Survey Date: 04-15-2004

Scale: 1" = 2000'

Date: 04-23-2004

**BASS ENTERPRISES
 PRODUCTION CO.**

