

N.M. Oil Cons. Div-Dist. 2  
1301 W. Grand Avenue  
Artesia, NM 88210

Form 3160-3  
(August 1999)

UNITED STATES  
DEPARTMENT OF THE INTERIOR  
BUREAU OF LAND MANAGEMENT

APPLICATION FOR PERMIT TO DRILL OR REENTER

RECEIVED

JUN 23 2006

0

OMB No. 1004-0136  
Expires November 30, 2000

1a. Type of Work: <input checked="" type="checkbox"/> DRILL <input type="checkbox"/> REENTER		5. Lease Serial No. <b>NM-19825</b>
b. Type of Well: <input type="checkbox"/> Oil Well <input checked="" type="checkbox"/> Gas Well <input type="checkbox"/> Other <input checked="" type="checkbox"/> Single Zone <input type="checkbox"/> Multiple Zone		6. If Indian, Allottee or Tribe Name <b>Not Applicable</b>
2. Name of Operator <b>Yates Petroleum Corporation</b>		7. If Unit or CA Agreement, Name and No. <b>Not Applicable</b>
3A. Address <b>105 South Fourth Street Artesia, New Mexico 88210</b>	3b. Phone No. (include area code) <b>(505) 748-1471</b>	8. Lease Name and Well No. <b>12202 Doris Federal #5</b>
4. Location of Well (Report location clearly and in accordance with any State requirements. *) At surface <b>1400' FNL and 660' FEL, Unit H</b> At proposed prod. Zone <b>same as above</b>		9. API Well No. <b>30-cs-63834</b>
14. Distance in miles and direction from nearest town or post office* <b>Approximately twenty (20) miles northwest of Roswell, New Mexico</b>		10. Field and Pool, or Exploratory <b>Wildcat I Granite</b>
15. Distance from proposed* location to nearest property or lease line, ft. (Also to nearest drig. unit line, if any) <b>660</b>	16. No. of Acres in lease <b>320 acres</b>	11. Sec., T., R., M., or Blk. and Survey or Area <b>Section 14, T5S-R24E</b>
18. Distance from proposed location* to nearest well, drilling, completed, applied for, on this lease, ft. <b>1500</b>	19. Proposed Depth <b>5300</b>	12. County or Parish <b>Chaves County</b>
21. Elevations (Show whether DF, KDB, RT, GL, etc.) <b>3927'GL</b>	22. Approximate date work will start* <b>ASAP</b>	13. State <b>NM</b>
20. BLM/BIA Bond No. on file <b>NM-2811</b>		
23. Estimated duration <b>30 Days</b>		

24. Attachments

The following, completed in accordance with the requirements of Onshore Oil and Gas Order No. 1, shall be attached to this form:

- |   |   |
|---|---|
| 1. Well plat certified by a registered surveyor.  | 4. Bond to cover the operations unless covered by an existing bond on file (see Item 20 above).   |
| 2. A Drilling Plan.   | 5. Operator certification.  |
| 3. A Surface Use Plan (if the location is on National Forest System Lands, the SUPO shall be filed with the appropriate Forest Service Office). | 6. Such other site specific information and/or plans as may be required by the authorized office. |

25. Signature <i>Debbie L. Caffall</i>	Name (Printed/Typed) <b>Debbie Caffall/Land Department</b>	Date <b>5/22/2006</b>
Email: debbiec@ypcnm.com		
Title: <b>Regulatory Agent</b>		
Approved by (Signature) <b>/S/LARRY D. BRAY</b>	Name (Printed/Typed) <b>/S/LARRY D. BRAY</b>	Date <b>JUN 22 2006</b>
Title <b>Assistant Field Manager, Lands And Minerals</b>	Office <b>ROSWELL FIELD OFFICE</b>	<b>APPROVED FOR 1 YEAR</b>

Application approval does not warrant or certify that the applicant holds legal or equitable title to those rights in the subject lease which would entitle the applicant to conduct operations thereon.

Conditions of approval, if any, are attached.

Title 18 U.S.C. Section 1001 and Title 43 U.S.C. Section 1212, make it a crime for any person knowingly and willfully to make to any department or agency of the United States any false, fictitious or fraudulent statements or representations as to any matter within its jurisdiction.

\*(Instructions on reverse)

Previously Approved

C-144 Attached

If earthen pits are used in association with the drilling of this well, an OCD pit permit must be obtained prior to pit construction.

79.5

1625 N. French Dr., Hobbs, NM 88240

State of New Mexico  
 Energy, Minerals & Natural Resources Department

Form C-102  
Revised August 15, 2000

**District II**  
**811 South First, Artesia, NM 88210**

**OIL CONSERVATION DIVISION**  
1220 South St. Francis Dr.  
Santa Fe, NM 87505

**Submit to Appropriate District Office**  
**State Lease - 4 Copies**  
**Fee Lease - 3 Copies**

**District III**  
**1000 Rio Brazos Rd., Aztec, NM 87410**

**District IV**  
**1220 S. St. Francis Dr., Santa Fe, NM 87505**

☐ AMENDED REPORT

# WELL LOCATION AND ACREAGE DEDICATION PLAT

<sup>1</sup> API Number	<sup>2</sup> Pool Code 96542	<sup>3</sup> Pool Name Wildcat - Gamine
<sup>4</sup> Property Code	<sup>5</sup> Property Name DORIS FEDERAL	<sup>6</sup> Well Number 5
<sup>7</sup> OGRID No. 025575	<sup>8</sup> Operator Name Yates Petroleum Corporation	<sup>9</sup> Elevation 3927'

## 10 Surface Location

UL or lot no.	Section	Township	Range	Lot Idn	Feet from the	North/South line	Feet from the	East/West line	County
H	14	5S	24E		1400	North	660	East	Chaves

<sup>11</sup> Bottom Hole Location If Different From Surface

UL or lot no.	Section	Township	Range	Lot Idn	Feet from the	North/South line	Feet from the	East/West line	County
<sup>12</sup> Dedicated Acres <b>320</b>	<sup>13</sup> Joint or Infill	<sup>14</sup> Consolidation Code		<sup>15</sup> Order No.					

**NO ALLOWABLE WILL BE ASSIGNED TO THIS COMPLETION UNTIL ALL INTERESTS HAVE BEEN CONSOLIDATED OR A NON-STANDARD UNIT HAS BEEN APPROVED BY THE DIVISION**

16				1400'	<p>17 OPERATOR CERTIFICATION</p> <p><i>I hereby certify that the information contained herein is true and complete to the best of my knowledge and belief.</i></p> <p><i>Robert L. Asher</i></p> <p>Signature</p> <p><b>Robert Asher</b></p> <p>Printed Name</p> <p><b>Regulatory Agent</b></p> <p>Title</p> <p><b>06/01/2004</b></p> <p>Date</p>
				660'	<p>18 SURVEYOR CERTIFICATION</p> <p><i>I hereby certify that the well location shown on this plat was plotted from field notes of actual surveys made by me or under my supervision, and that the same is true and correct to the best of my belief.</i></p> <p><b>REFER TO ORIGINAL PLAT</b></p> <p>Date of Survey</p> <p>Signature and Seal of Professional Surveyor:</p>
					<p><b>NM-19825</b></p>
					<p>Certificate Number</p>

# YATES PETROLEUM CORPORATION

## Doris Federal #5

1400' FNL & 660' FEL

Section 14, T5S-R24E

Chaves County, New Mexico

1. The estimated tops of geologic markers are as follows:

San Andres	660'	Abo	3560'
Glorieta	1450'	Wolfcamp	4300'
Yeso	1560'	Basement Granite	5200'
Tubb	2935'	TD	5300'

2. The estimated depths at which anticipated water, oil or gas formations are expected to be encountered:

Water:	200'-300'
Oil or Gas:	3560' to 5300'

3. Pressure Control Equipment: BOPE will be installed on the 11 3/4" casing and rated for 2000# BOP systems will be consistent with API RP 53. Pressure tests will be conducted before drilling out from under all casing strings which are set and cemented in place. Blowout Preventor controls will be installed prior to drilling the surface plug and will remain in use until the well is completed or abandoned. Preventors will be inspected and operated at least daily to ensure good mechanical working order, and this inspection recorded on the daily drilling report. See Exhibit B.

### Auxiliary Equipment:

- A. Auxiliary Equipment: Kelly cock, pit level indicators, flow sensor equipment and a sub with full opening valve to fit the drill pipe and collars will be available on the rig floor in the open position at all times for use when kelly is not in use.

4. THE PROPOSED CASING AND CEMENTING PROGRAM:

- A. Casing Program: (All New)

<u>Hole Size</u>	<u>Casing Size</u>	<u>Size Wt./Ft</u>	<u>Grade</u>	<u>Coupling</u>	<u>Interval</u>	<u>Length</u>
14 3/4"	11 3/4"	42#	H-40	ST&C	0-900'	900'
11"	8 5/8" *	24#	J-55	ST&C	0-1500'	1500'
7 7/8"	5 1/2"	15.5#	J-55	ST&C	0-5300'	5300'

\* 8 5/8" casing will be set only if lost circulation is encountered.

1. Minimum Casing Design Factors: Collapse 1.125, Burst 1.0, Tensile Strength 1.80

**B. CEMENTING PROGRAM:**

Surface casing: Cement with 200 sx Lite "C" (Yield 2.0 Wt. 12.5). Tail in with 200 sx "C" + 2% CaCl<sub>2</sub> (Yield 1.33, Wt. 15.6).

Intermediate casing: 250 sx Lite (Yield 2.0, Wt. 12.0). Tail in with 200 sx "C" + 2% CaCl<sub>2</sub> (Yield 1.32 Wt. 14.8).\*

Production Casing: TOC 3100'. Cement with 350 sx Super "C" (Yield 1.67 Wt. 13.0).

\*If intermediate casing not set, hole size will be reduced from 11" to 7 7/8" at 1500'.

**5. MUD PROGRAM AND AUXILIARY EQUIPMENT:**

<u>Interval</u>	<u>Type</u>	<u>Weight</u>	<u>Viscosity</u>	<u>Fluid Loss</u>
Spud-900'	FWGel/Paper/LCM	8.6-9.0	32-36	N/C
900'-1500'	Cut Brine	8.6-9.0	29	N/C
1500'-3530'	Brine	10.0-10.2	28	N/C
3530'-TD	Salt Gel/Starch/Oil/LCM	9.0-9.8	34-45	<10cc

Sufficient mud material(s) to maintain mud properties, control lost circulation and contain a blow out will be available at the well site during drilling operations. Mud will be checked hourly by rig personnel.

**6. EVALUATION PROGRAM:**

Samples: 10' samples out from under surface casing to TD.

Logging: CNL/LDT, w/NGT TD to surface casing; CNL/GR to surface;  
DLL/MSFL TD to surface casing; BHC Sonic TD to surface casing.

Coring: None anticipated.

DST's: None anticipated.

**7. ABNORMAL CONDITIONS, BOTTOM HOLE PRESSURE, AND POTENTIAL HAZARDS:**

Anticipated BHP:

From: 0	To: 900'	Anticipated Max. BHP: 375 PSI
From: 900'	To: TD	Anticipated Max. BHP: 2500 PSI

Abnormal Pressures Anticipated: None

Lost Circulation Zones Anticipated: None.

H<sub>2</sub>S Zones Anticipated: None.

Maximum Bottom Hole Temperature: 110 F

**8. ANTICIPATED STARTING DATE:**

Plans are to drill this well as soon as possible after receiving approval. It should take approximately 20 days to drill the well with completion taking another 10 days.

**MULTI-POINT SURFACE USE AND OPERATIONS PLAN**  
**YATES PETROLEUM CORPORATION**  
**Doris Federal #5**  
1400' FNL & 660' FEL  
Section 14, T5S-R24E  
Chaves County, New Mexico

This plan is submitted with Form 3160-3, Application for Permit to Drill, covering the above described well. The purpose of this plan is to describe the location of the proposed well, the proposed construction activities and operations plan, the magnitude of the surface disturbance involved and the procedures to be followed in rehabilitating the surface after completion of the operations, so that a complete appraisal can be made of the environmental effect associated with the operations.

**1. EXISTING ROADS:**

Exhibit A is a portion of the BLM map showing the well and roads in the vicinity of the proposed location. The proposed wellsite is located approximately 35 miles northeast of Roswell, New Mexico and the access route to the location is indicated in red and green on Exhibit A.

**DIRECTIONS:**

Go north of Roswell on Highway 285 for approximately 23 miles to Dona Ana. Turn east on Dona Ana Road and go approximately 7.1 miles continue northeast on Dona Ana Road and go approximately 4 miles to the Stancell Corral. Continue north for approximately .9 of a mile. Turn left and go approximately .3 of a mile to the Doris Federal #1. From the cattle guard just east of the Doris Federal #1 turn northeast on existing ranch road and go approx. 0.3 of a mile. The new access road will start here going north for approx. 0.3 of a mile to the southeast corner of the proposed Doris Federal #5 well location.

**2. PLANNED ACCESS ROAD:**

- A. The proposed new access will be approximately 0.3 of a mile in length from the point of origin to the southwest corner of the drilling pad. The road will lie in a southwest/northeast direction.
- B. The new road will be 14 feet in width (driving surface) and will be adequately drained to control runoff and soil erosion.
- C. The new road will be bladed with drainage on one side. Traffic turnouts may be built.
- D. The route of the road is visible.
- E. Existing roads will be maintained in the same or better condition.

**3. LOCATION OF EXISTING WELL:**

- A. There is drilling activity within a one-mile radius of the wellsite.
- B. Exhibit D shows existing wells within a one-mile radius of the proposed wellsite.

**4. LOCATION OF EXISTING AND/OR PROPOSED FACILITIES:**

- A. There are production facilities on this lease at the present time.
- B. In the event that the well is productive, the necessary production facilities will be installed on the drilling pad. If the well is productive oil, a gas or diesel self-contained unit will be used to provide the necessary power. No power will be required if the well is productive of gas.

**5. LOCATION AND TYPE OF WATER SUPPLY:**

- A. It is planned to drill the proposed well with a fresh water system. The water will be obtained from commercial sources and will be hauled to the location by truck over the existing and proposed roads shown in Exhibit A.

**6. SOURCE OF CONSTRUCTION MATERIALS:**

Dirt contractor will locate closest pit and obtain any material and permits if needed for construction.

**7. METHODS OF HANDLING WASTE DISPOSAL:**

- A. Drill cuttings will be disposed of in the reserve pits.
- B. Drilling fluids will be allowed to evaporate in the reserve pits until the pits are dry.
- C. Water produced during operations will be collected in tanks until hauled to an approved disposal system, or separate disposal application will be submitted.
- D. Oil produced during operations will be stored in tanks until sold.
- E. Current laws and regulations pertaining to the disposal of human waste will be complied with.
- F. All trash, junk, and other waste materials will be contained in trash cages or bins to prevent scattering and will be removed and deposited in an approved sanitary landfill. Burial on site is not approved.

**8. ANCILLARY FACILITIES: None.**

**9. WELLSITE LAYOUT:**

- A. Exhibit C shows the relative location and dimensions of the well pad, the reserve pits, the location of the drilling equipment, rig orientation and access road approach.
- B. The reserve pits will be plastic lined.
- C. A 400' x 400' area has been staked and flagged.

**10. PLANS FOR RESTORATION:**

- A. After finishing drilling and/or completion operations, all equipment and other material not needed for further operations will be removed. The location will be cleaned of all trash and junk to leave the wellsite in as aesthetically pleasing a condition as possible.
- B. Unguarded pits, if any, containing fluids will be fenced until they have dried and been leveled.
- C. If the proposed well is non-productive, all rehabilitation and/or vegetation requirements of the Bureau of Land Management will be complied with and will be accomplished as expeditiously as possible. All pits will be filled level after they have evaporated and dried.

11. SURFACE OWNERSHIP:

Bureau Of Land Management, Roswell, New Mexico.

12. OTHER INFORMATION:

- A. Topography: Refer to the existing archaeological report for a description of the topography, flora, fauna, soil characteristics, dwellings, historical and cultural sites.
- B. The primary surface use is for grazing.

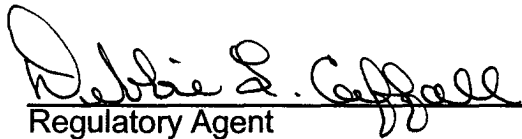
13. OPERATOR'S REPRESENTATIVE:

- |   |  |
|---|--|
| <p>A. Through A.P.D. Approval:</p> <p>Debbie Caffall, Regulatory Agent<br/>Yates Petroleum Corporation<br/>105 South Fourth Street<br/>Artesia, New Mexico 88210<br/>Phone (505) 748-1471</p> | <p>B. Through Drilling Operations,<br/>Completions and Production:<br/>Pinson McWhorter, Operations Manager<br/>Yates Petroleum Corporation<br/>105 South Fourth Street<br/>Artesia, New Mexico 88210<br/>Phone (505) 748-1471</p> |
|---|--|

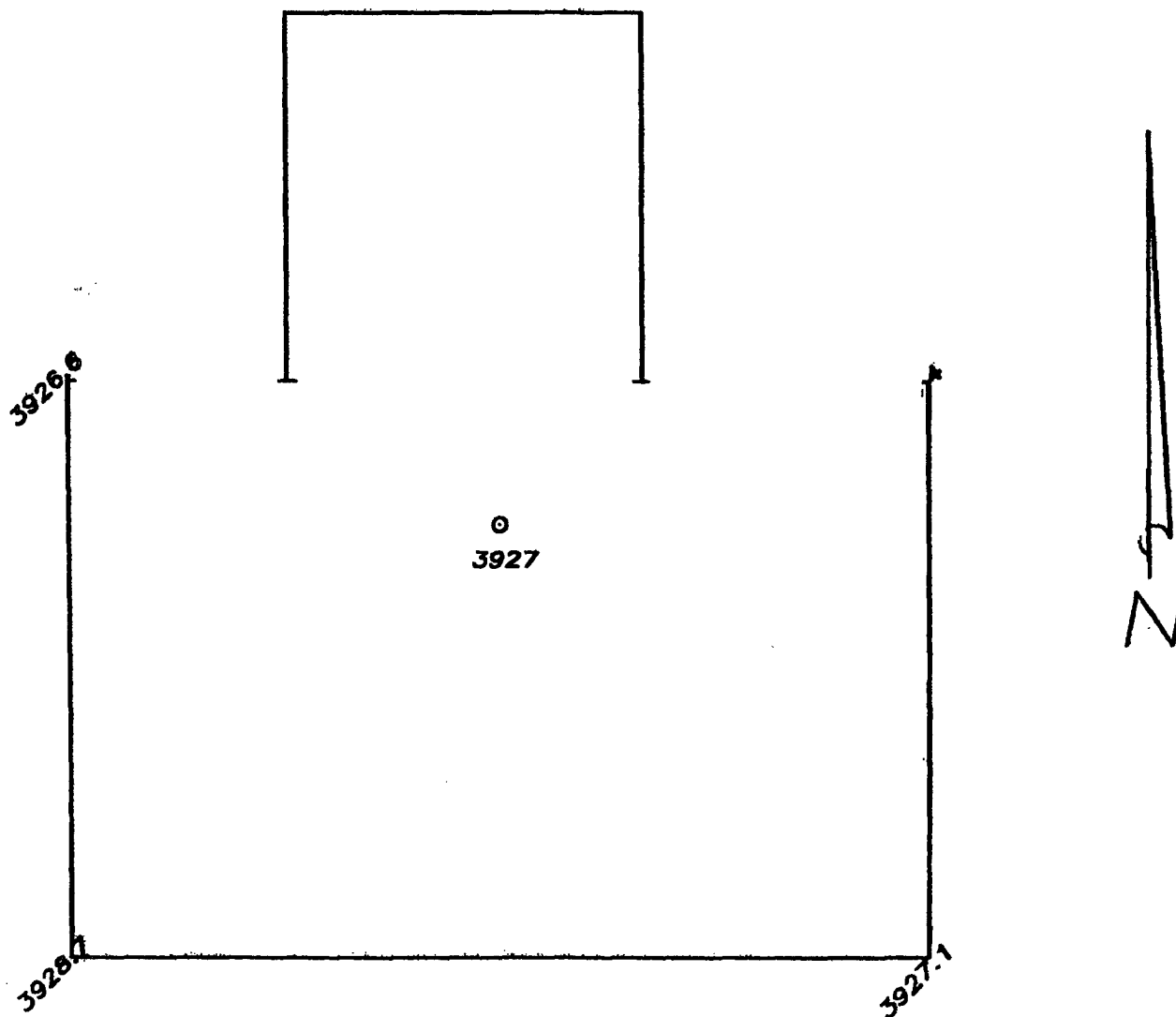
14. CERTIFICATION:

I hereby certify that I, or persons under my direct supervision, have inspected the proposed drill site and access route, that I am familiar with the conditions which presently exist; that the statements made in this plan are to the best of my knowledge, true and correct; and, that the work associated with the operations proposed herein will be performed by Yates Petroleum Corporation and its contractors and subcontractors in conformity with this plan and the terms and conditions under which it is approved. This statement is subject to the provisions of 18 U.S.C. 1001 for the filing of a false statement.

5/22/2006

  
Regulatory Agent

YATES PETROLEUM CORPORATION DORIS RI FEDERAL 5 1400/N & 660/E  
SECTION 14, TOWNSHIP 5 SOUTH, RANGE 24 EAST, NMPM, CHAVES COUNTY, NEW MEXICO.



50' 0 50' 100'  
Scale 1" = 50'

THE PREPARATION OF THIS PLAN AND THE PERFORMANCE OF THE SURVEY UPON WHICH IT IS BASED WERE DONE UNDER MY DIRECTION AND THE PLAN ACCURATELY REPRESENTS THE RESULTS OF SAID SURVEY AND MEETS THE REQUIREMENTS OF THE STANDARDS FOR LAND SURVEYS IN NEW MEXICO AS ADOPTED BY THE NEW MEXICO STATE BOARD OF REGISTRATION FOR PROFESSIONAL ENGINEERS AND LAND SURVEYORS.

*[Signature]*  
HERSCHEL JONES, LICENSE No. 3840  
Professional Engineer

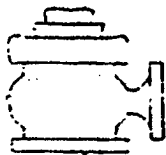
YATES PETROLEUM CORP.

WELL PAD PLAN VIEW ON THE YATES DORIS RI  
FEDERAL #5 LOCATED 1400/N AND 660/E OF  
SECTION 14, TOWNSHIP 5 SOUTH, RANGE 24  
EAST, NMPM, CHAVES COUNTY, NEW MEXICO.

Survey Date: 1/05/2000	Sheet 1 of 1 Sheets
Drawn By: Ed Blonka	W.O. Number
Date: 1/08/00	Scale 1" = 50' DORIS 5

GENERAL SURVEYING COMPANY P.O. BOX 1928  
LOVINGTON, NEW MEXICO 88260





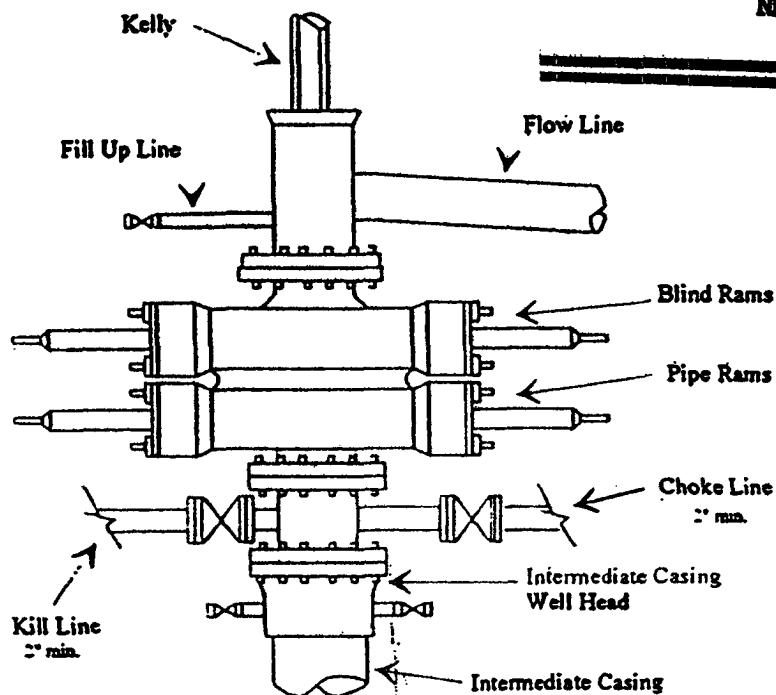
# Yates Petroleum Corporation

BOP-2

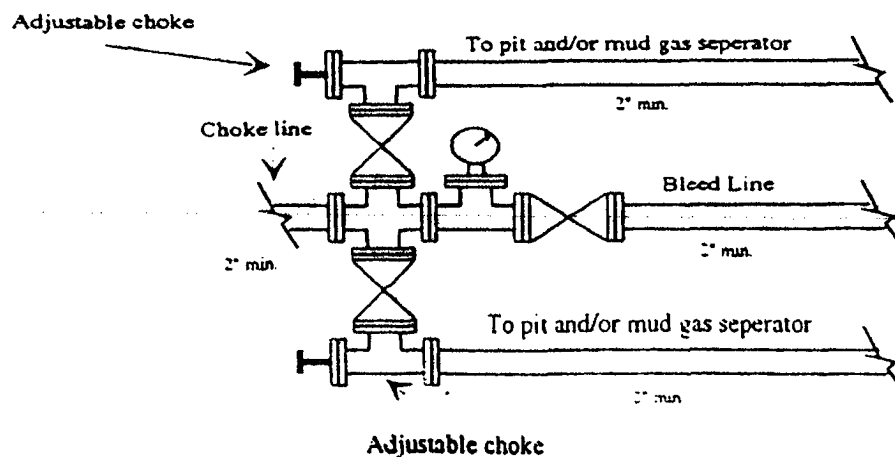
## Typical 2,000 psi Pressure System Schematic

### Double Ram Preventer Stack

Doris Federal #5  
1400 FNL & 660' FEL  
Section 14, T5S-R24E  
Chaves County, New Mexico  
NM-19825



Typical 2,000 psi choke manifold assembly with at least these minimum features



District I  
1625 N. French Dr., Hobbs, NM 88240  
District II  
1301 W. Grand Avenue, Artesia, NM 88210  
District III  
1000 Rio Brazos Road, Aztec, NM 87410  
District IV  
1220 S. St. Francis Dr., Santa Fe, NM 87505

State of New Mexico  
Energy Minerals and Natural Resources

Oil Conservation Division  
1220 South St. Francis Dr.  
Santa Fe, NM 87505

Form C-144  
March 12, 2004

For drilling and production facilities, submit to  
appropriate NMOCD District Office.  
For downstream facilities, submit to Santa Fe  
office

**Pit or Below-Grade Tank Registration or Closure**

Is pit or below-grade tank covered by a "general plan"? Yes ☒ No ☐

Type of action: Registration of a pit or below-grade tank ☒ Closure of a pit or below-grade tank ☐

Operator: Yates Petroleum Corporation Telephone: (505) 748-1471 e-mail address: debbiec@ypcnm.com

Address: 105 South 4<sup>th</sup> Street, Artesia, New Mexico 88210

Facility or well name: Doris Federal #5 API #: 30-005-63349 U/L or Qtr/Qtr H Sec 14 T 5S R 24E

County: Chaves Latitude \_\_\_\_\_ Longitude \_\_\_\_\_ NAD: 1927 ☐ 1983 ☐

Surface Owner Federal ☒ State ☐ Private ☐ Indian ☐

RECEIVED

AUG 19 2004

Pit Type: Drilling ☒ Production ☐

Disposal ☐ Workover ☐ Emergency ☐

Lined ☒ Unlined ☐

Liner type: Synthetic ☒ Thickness 12 mil

Clay ☐ Volume \_\_\_\_\_ bbl

**Below-grade tank**

Volume: \_\_\_\_\_ bbl Type of fluid: \_\_\_\_\_

Construction material: \_\_\_\_\_

Double-walled, with leak detection? Yes ☐ If not, explain why not.

OCD-ARTESIA

Depth to ground water (vertical distance from bottom of pit to seasonal high water elevation of ground water.)

Less than 50 feet (20 points)

50 feet or more, but less than 100 feet (10 points)

100 feet or more (0 points)

Wellhead protection area: (Less than 200 feet from a private domestic water source, or less than 1000 feet from all other water sources.)

Yes (20 points)

No (0 points)

Distance to surface water: (horizontal distance to all wetlands, playas, irrigation canals, ditches, and perennial and ephemeral watercourses.)

Less than 200 feet (20 points)

200 feet or more, but less than 1000 feet (10 points)

1000 feet or more (0 points)

Ranking Score (Total Points) 10 points

If this is a pit closure: (1) attach a diagram of the facility showing the pit's relationship to other equipment and tanks. (2) Indicate disposal location:

onsite ☐ offsite ☐ If offsite, name of facility \_\_\_\_\_ (3) Attach a general description of remedial action taken including remediation start date and end date. (4) Groundwater encountered: No ☐ Yes ☐ If yes, show depth below ground surface \_\_\_\_\_ ft. and attach sample results. (5) Attach soil sample results and a diagram of sample locations and excavations.

I hereby certify that the information above is true and complete to the best of my knowledge and belief. I further certify that the above-described pit or below-grade tank has been/will be constructed or closed according to NMOCD guidelines ☐, a general permit ☒, or an (attached) alternative OCD-approved plan ☐.

Date: May 17, 2004

Printed Name/Title Robert Asher / Regulatory Agent / Land Department Signature Robert Asher

Email: debbiec@ypcnm.com

Your certification and NMOCD approval of this application/closure does not relieve the operator of liability should the contents of the pit or tank contaminate ground water or otherwise endanger public health or the environment. Nor does it relieve the operator of its responsibility for compliance with any other federal, state, or local laws and/or regulations.

Approval:

Date: AUG 23 2004

Printed Name/Title Child Sep ID Signature Child Sep ID