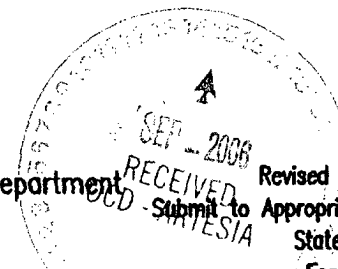


District I
1625 N. French Dr., Hobbs, NM 88240
District II
1301 W. Grand Avenue, Artesia, NM 88210
District III
1000 Rio Brazos Rd., Aztec, NM 87410
District IV
1220 S. St. Francis Dr., Santa Fe, NM 87505

State of New Mexico
Energy, Minerals & Natural Resources Department
OIL CONSERVATION DIVISION
1220 South St. Francis Dr.
Santa Fe, NM 87505



Form C-102
Revised October 12, 2005
Submit to Appropriate District Office
State Lease-4 Copies
Fee Lease-3 Copies

☐ AMENDED REPORT

WELL LOCATION AND ACREAGE DEDICATION PLAT

API Number 30-015-34800	Pool Code 75260	Pool Name Cottonwood Creek; Wolfcamp, West (Gas)
Property Code 35613	Property Name SEINE C 6 FEE	Well Number 2H
GRID No. 7377	Operator Name EOG RESOURCES, INC.	Elevation 3518'

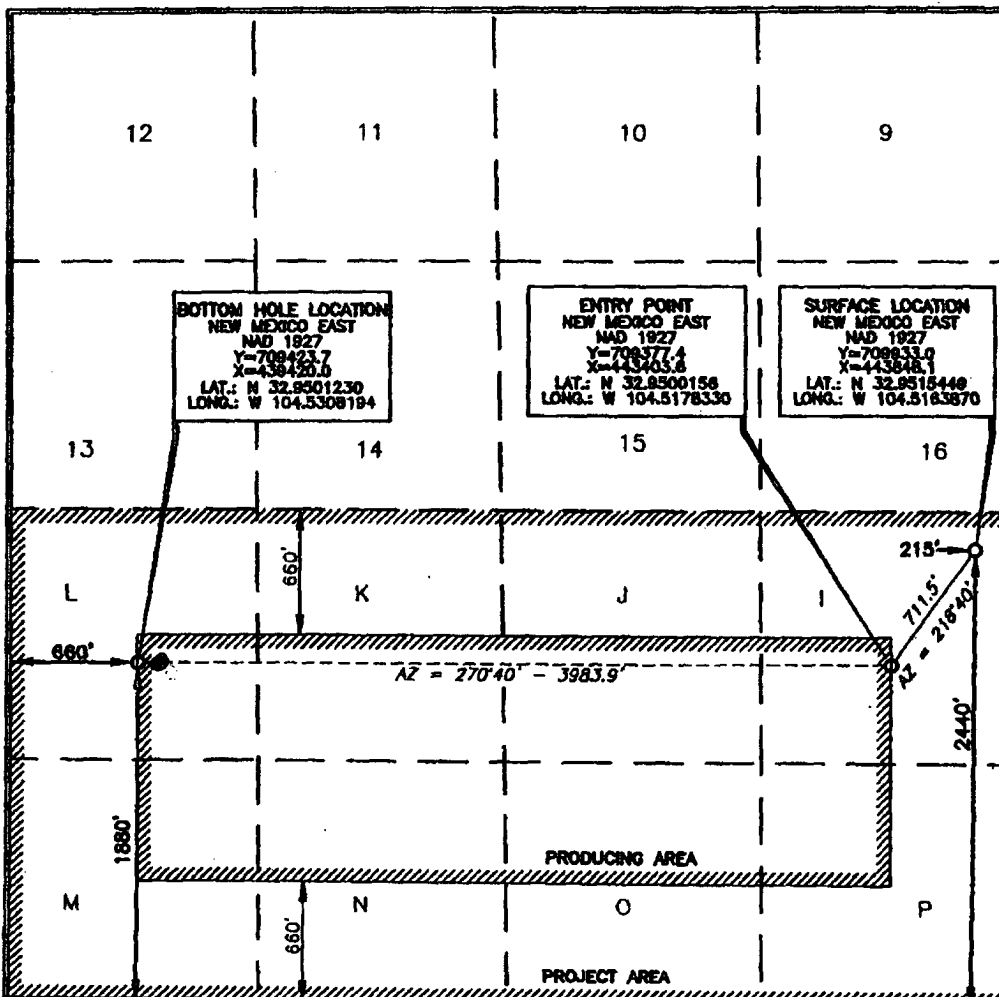
Surface Location

UL or lot no.	Section	Township	Range	Lot Idn	Feet from the	North/South line	Feet from the	East/West line	County
I	6	16 SOUTH	25 EAST, N.M.P.M.		2440	SOUTH	215	EAST	EDDY

Bottom Hole Location If Different From Surface

UL or lot no.	Section	Township	Range	Lot Idn	Feet from the	North/South line	Feet from the	East/West line	County
L	6	16 SOUTH	25 EAST, N.M.P.M.		1882	SOUTH	725	WEST	EDDY
Dedicated Acres 320	Joint or Infill	Consolidation Code	Order No.						

No allowable will be assigned to this completion until all interests have been consolidated or a non-standard unit has been approved by the division.



OPERATOR CERTIFICATION

I hereby certify that the information contained herein is true and complete to the best of my knowledge and belief, and that this organization either owns a working interest or unleased mineral interest in the land including the proposed bottom hole location or has a right to drill this well at this location pursuant to a contract with an owner of such a mineral or working interest, or to a voluntary pooling agreement or a compulsory pooling order heretofore entered by the division.

Stan Wagner 9/12/06
Signature Date

Stan Wagner

Printed Name

SURVEYOR CERTIFICATION

I hereby certify that the well location shown on this plat was plotted from field notes of actual survey made by me or under my supervision, and that the same is true and correct to the best of my belief.

15079
MAY 30, 2006
Date of Survey

Signature and Seal of Professional Surveyor
JERRY D. PAUL

Certificate Number 15079

WOF 060330ML-d (C06)