

District I  
1625 N. French Dr., Hobbs, NM 88240  
District II  
1301 W. Grand Avenue, Artesia, NM 88210  
District III  
1000 Rio Brazos Road, Aztec, NM 87410  
District IV  
1220 S. St. Francis Dr., Santa Fe, NM 87505

State of New Mexico  
Energy Minerals and Natural Resources

Form C-101  
May 27, 2004

Oil Conservation Division  
1220 South St. Francis  
Santa Fe, NM 87505

Submit to appropriate District Office

☐ AMENDED REPORT

APPLICATION FOR PERMIT TO DRILL, RE-ENTER, DEEPEN, PLUGBACK, OR ADD A ZONE

<sup>1</sup> Operator Name and Address <b>Marbob Energy Corporation</b> <b>P.O. Box 227, Artesia, NM 88211-0227</b>		<sup>2</sup> OGRID Number <b>14049</b>
<sup>3</sup> Property Code <b>36118</b>		<sup>4</sup> API Number <b>30-015-10724</b>
<sup>5</sup> Property Name <b>Myox 28 State Com</b>		<sup>6</sup> Well No. <b>1</b>
<sup>9</sup> Proposed Pool 1 <b>Wildcat Morrow</b>		<sup>10</sup> Proposed Pool 2

<sup>7</sup> Surface Location

UL or lot no.	Section	Township	Range	Lot Idn	Feet from the	North/South line	Feet from the	East/West line	County
<b>F</b>	<b>28</b>	<b>25S</b>	<b>28E</b>		<b>1980</b>	<b>North</b>	<b>1980</b>	<b>West</b>	<b>Eddy</b>

<sup>8</sup> Proposed Bottom Hole Location If Different From Surface

UL or lot no.	Section	Township	Range	Lot Idn	Feet from the	North/South line	Feet from the	East/West line	County

Additional Well Information

<sup>11</sup> Work Type Code <b>E</b>	<sup>12</sup> Well Type Code	<sup>13</sup> Cable/Rotary	<sup>14</sup> Lease Type Code <b>S</b>	<sup>15</sup> Ground Level Elevation <b>2978'</b>
<sup>16</sup> Multiple	<sup>17</sup> Proposed Depth <b>14,410'</b>	<sup>18</sup> Formation <b>Barnett</b>	<sup>19</sup> Contractor	<sup>20</sup> Spud Date <b>11/24/06</b>
Depth to Groundwater <b>250'</b>		Distance from nearest fresh water well <b>Over 1000'</b>		Distance from nearest surface water <b>Over 1000'</b>
Pit: Liner: Synthetic <input checked="" type="checkbox"/> <b>12</b> mils thick Clay <input type="checkbox"/> Pit Volume: <b>3000</b> bbls Drilling Method:				
Closed-Loop System <input type="checkbox"/> Fresh Water <input type="checkbox"/> Brine <input checked="" type="checkbox"/> Diesel/Oil-based <input type="checkbox"/> Gas/Air <input type="checkbox"/>				

<sup>21</sup> Proposed Casing and Cement Program

Hole Size	Casing Size	Casing weight/foot	Setting Depth	Sacks of Cement	Estimated TOC
<b>17 1/2"</b>	<b>13 3/8"</b>	<b>48, 54.5, 72</b>	<b>2389'</b>	<b>2225</b>	<b>Surf</b>
<b>12 1/4"</b>	<b>9 5/8"</b>	<b>40</b>	<b>6995'-8549'</b>	<b>350</b>	<b>7030</b>
<b>7 7/8"</b>	<b>5 1/2"</b>	<b>17</b>	<b>14100'</b>	<b>3000 CF</b>	<b>7500</b>

<sup>22</sup> Describe the proposed program. If this application is to DEEPEN or PLUG BACK, give the data on the present productive zone and proposed new productive zone. Describe the blowout prevention program, if any. Use additional sheets if necessary.

Plan to drill out cement plugs with 12 1/4" bit to 9 5/8" stub at 6995'. Drill out cement plugs with 7 7/8" bit to 14,100' and run open hole logs. Plan to run 5 1/2" /17 ppf/M95-110/LTC casing to 14100' and place cement from 14100' to 7500' with 3000 CF cement (2000 CF Halliburton Light + 1000 CF Super H).

<sup>23</sup> I hereby certify that the information given above is true and complete to the best of my knowledge and belief. I further certify that the drilling pit will be constructed according to NMOCD guidelines ☐, a general permit ☒, or an (attached) alternative OCD-approved plan ☐.

Printed name: **Nancy T. Agnew**

Title: **Land Department**

E-mail Address: **landtech@marbob.com**

Date: **10/24/06**

Phone: **505-748-3303**

OIL CONSERVATION DIVISION

Approved by:

**BRYAN G. ARANT**

**DISTRICT II GEOLOGIST**

Title:

Approval Date: **OCT 30 2006**

Expiration Date: **OCT 30 2007**

Conditions of Approval Attached ☐

## District I

1625 N. French Dr., Hobbs, NM 88240

## District II

1301 W. Grand Avenue, Artesia, NM 88210

## District III

1000 Rio Brazos Rd., Aztec, NM 87410

## District IV

1220 S. St. Francis Dr., Santa Fe, NM 87505

State of New Mexico

Energy, Minerals &amp; Natural Resources Department

OIL CONSERVATION DIVISION

1220 South St. Francis Dr.

Santa Fe, NM 87505

Form C-102

Revised October 12, 2005

Submit to Appropriate District Office

State Lease - 4 Copies

Fee Lease - 3 Copies

☐ AMENDED REPORT

## WELL LOCATION AND ACREAGE DEDICATION PLAT

1 API Number 30-015-10724		2 Pool Code 97032		3 Well Name Wildcat Morrow	
4 Property Code		5 Property Name Myox 28 State Com			6 Well Number 1
7 OGRID No. 14049		8 Operator Name Marbob Energy Corporation			9 Elevation 2978'

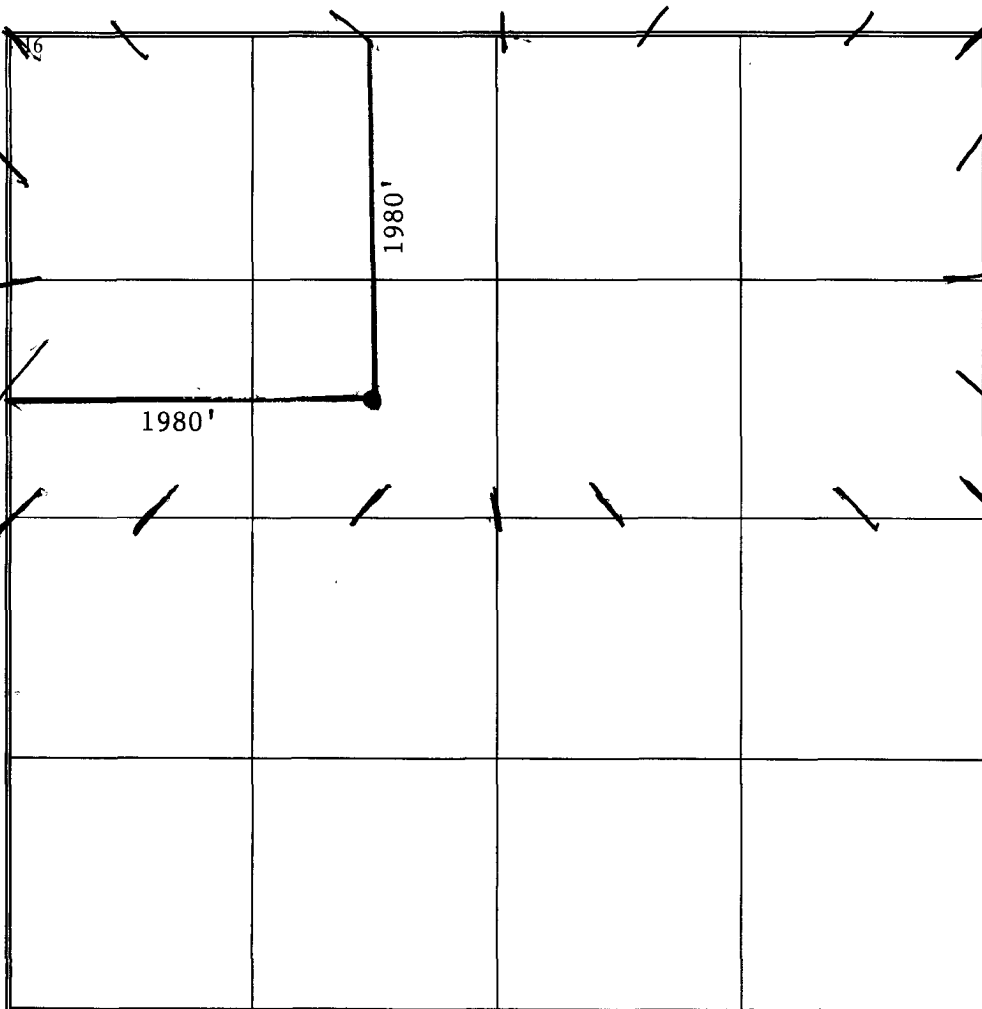
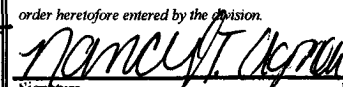
## 10 Surface Location

UL or lot no.	Section	Township	Range	Lot Idn	Feet from the	North/South line	Feet from the	East/West line	County
F	28	25S	28E		1980	North	1980	West	Eddy

## 11 Bottom Hole Location If Different From Surface

UL or lot no.	Section	Township	Range	Lot Idn	Feet from the	North/South line	Feet from the	East/West line	County
12 Dedicated Acres 320		13 Joint or Infill		14 Consolidation Code		15 Order No.			

No allowable will be assigned to this completion until all interests have been consolidated or a non-standard unit has been approved by the division.

	<b>17 OPERATOR CERTIFICATION</b> I hereby certify that the information contained herein is true and complete to the best of my knowledge and belief, and that this organization either owns a working interest or unleased mineral interest in the land including the proposed bottom hole location or has a right to drill this well at this location pursuant to a contract with an owner of such a mineral or working interest, or to a voluntary pooling agreement or a compulsory pooling order heretofore entered by the division.  Signature _____ Date 10/23/06 Nancy T. Agnew Printed Name _____
	<b>18 SURVEYOR CERTIFICATION</b> I hereby certify that the well location shown on this plat was plotted from field notes of actual surveys made by me or under my supervision, and that the same is true and correct to the best of my belief.  Date of Survey _____ Signature and Seal of Professional Surveyor: _____  Certificate Number _____

**NEW MEXICO OIL CONSERVATION COMMISSION**  
**WELL LOCATION AND ACREAGE DEDICATION PLAT**

FORM C-128  
 Revised 5/1/57

**SEE INSTRUCTIONS FOR COMPLETING THIS FORM ON THE REVERSE SIDE**

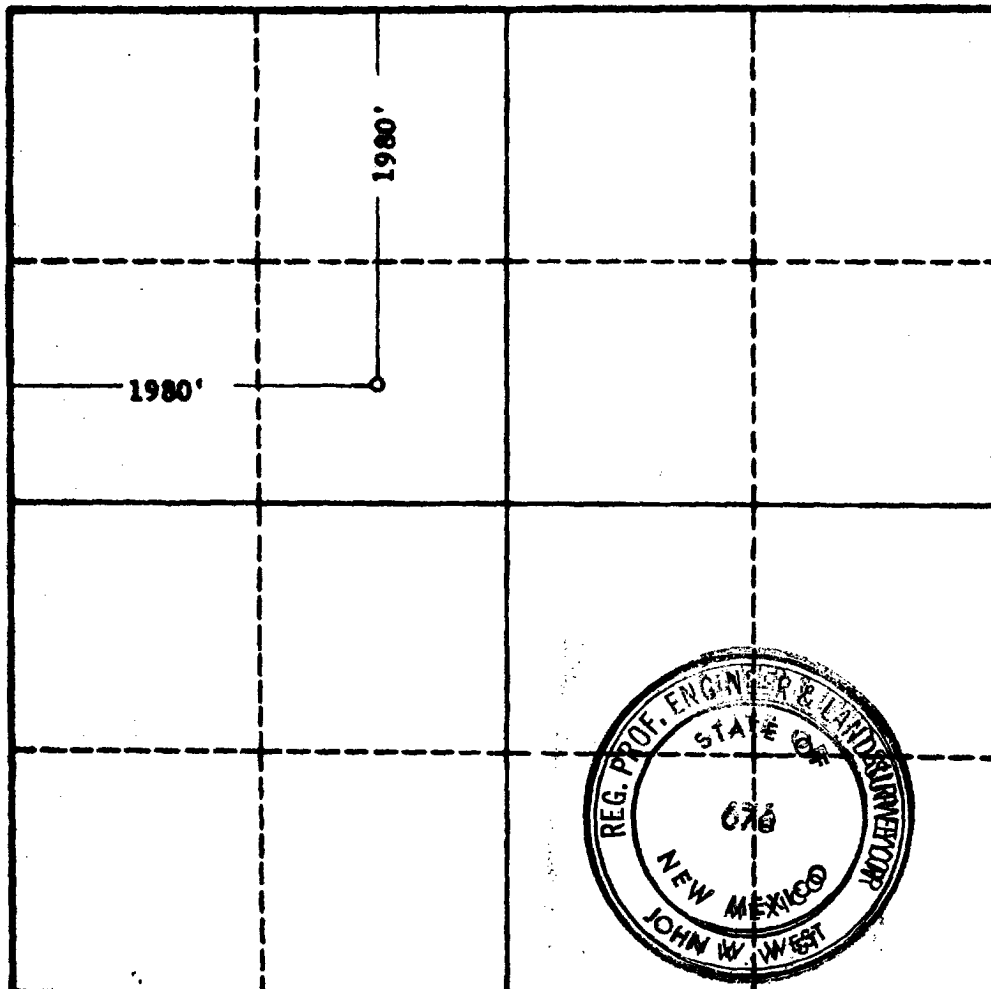
**SECTION A**

Operator <b>GULF OIL CORP.</b>		Lease <b>EDDY STATE FD</b>		Well No. <b>1</b>
Unit Letter <b>F</b>	Section <b>28</b>	Township <b>25 SOUTH</b>	Range <b>28 EAST</b>	County <b>EL PASO</b>
Actual Passage Location of Well: <b>1980</b> feet from the <b>NORTH</b> line and <b>1980</b> feet from the <b>WEST</b> line				
Ground Level Elev.	Producing Formation <b>Devonian</b>	Pool <b>Wildcat</b>	Dedicated Acreage: <b>40</b> Acres	

1. Is the Operator the only owner in the dedicated acreage outlined on the plat below? YES **XX** NO \_\_\_\_ . ("Owner" means the person who has the right to drill into and to produce from any pool and to appropriate the production either for himself or for himself and another. (65-3-29 (c) NMSA 1935 Comp.)
2. If the answer to question one is "no," have the interests of all the owners been consolidated by **RELEASE** otherwise? YES \_\_\_\_ NO \_\_\_\_ . If answer is "yes," Type of Consolidation \_\_\_\_
3. If the answer to question two is "no," list all the owners and their respective interests below:

Owner	Land Description <b>MAR 29 1965</b>
	<b>O. C. C.</b> <b>ARTESIA, OFFICE</b>

**SECTION B**



**CERTIFICATION**

I hereby certify that the information in SECTION A above is true and complete to the best of my knowledge and belief.

Name ORIGINAL SIGNED BY  
**C. D. BORLAND**

Position  
**Area Production Manager**

Company  
**Gulf Oil Corporation**

Date  
**March 25, 1965**

I hereby certify that the well location shown on the plat in SECTION B was plotted from field notes of actual surveys made by me or under my supervision, and that the same is true and correct to the best of my knowledge and belief.

Date Surveyed  
**MARCH 23, 1965**

Registered Professional Engineer and/or Land Surveyor, **JOHN W. WEST**

*John W. West*  
 Certificate No.  
**N. M. - P. E. & L. S. NO. 676**

0 320 640 960 1280 1600 1920 2240 2560 2880 3200 3520 3840 4160 4480 4800 5120 5440 5760 6080 6400 6720 7040 7360 7680 8000

MYDX 28 St. Comm. 1

(Formerly Eddy St. FD - 1)

F-28-25s-28e

1980' FNL, 1980' FWL

Eddy, NM

30-015-10724'

Zero: 19' AGL

KB: 2997'

GL: 2978'

P#A 7165

17 1/2"

OV 1496'

12 1/4"

BEFORE

TOC 7050' TS

Baker K, BP 8000'

958" jet cut 6995'

7761-72' Bone Spring

958" / 40' N80, 595' / LTC @ 8549'  
350" C"

8 3/4"

14410'

MYDX 28 St. Conn.

(Formerly Eddy St. FD-1)  
F-28-25s-28e  
1980' FNL, 1980' FWL  
Eddy, NM  
30-015-10724

Zero:  
KB:  
GL: 2978'

17 1/2"

DV 1496'

13 3/8" / 48, 54, 5, 72 / H40, J55, N80 / STC @ 2389'  
1st: 850sx  
2nd: 1375sx (circ)

12 1/4"

AFTER

9 7/8" cut 6995'  
TDC 7030' TS

Design TDC ±7500'

7761-72'

9 7/8" / 40 / N80, 595 / LTC @ 8549'  
350" C"

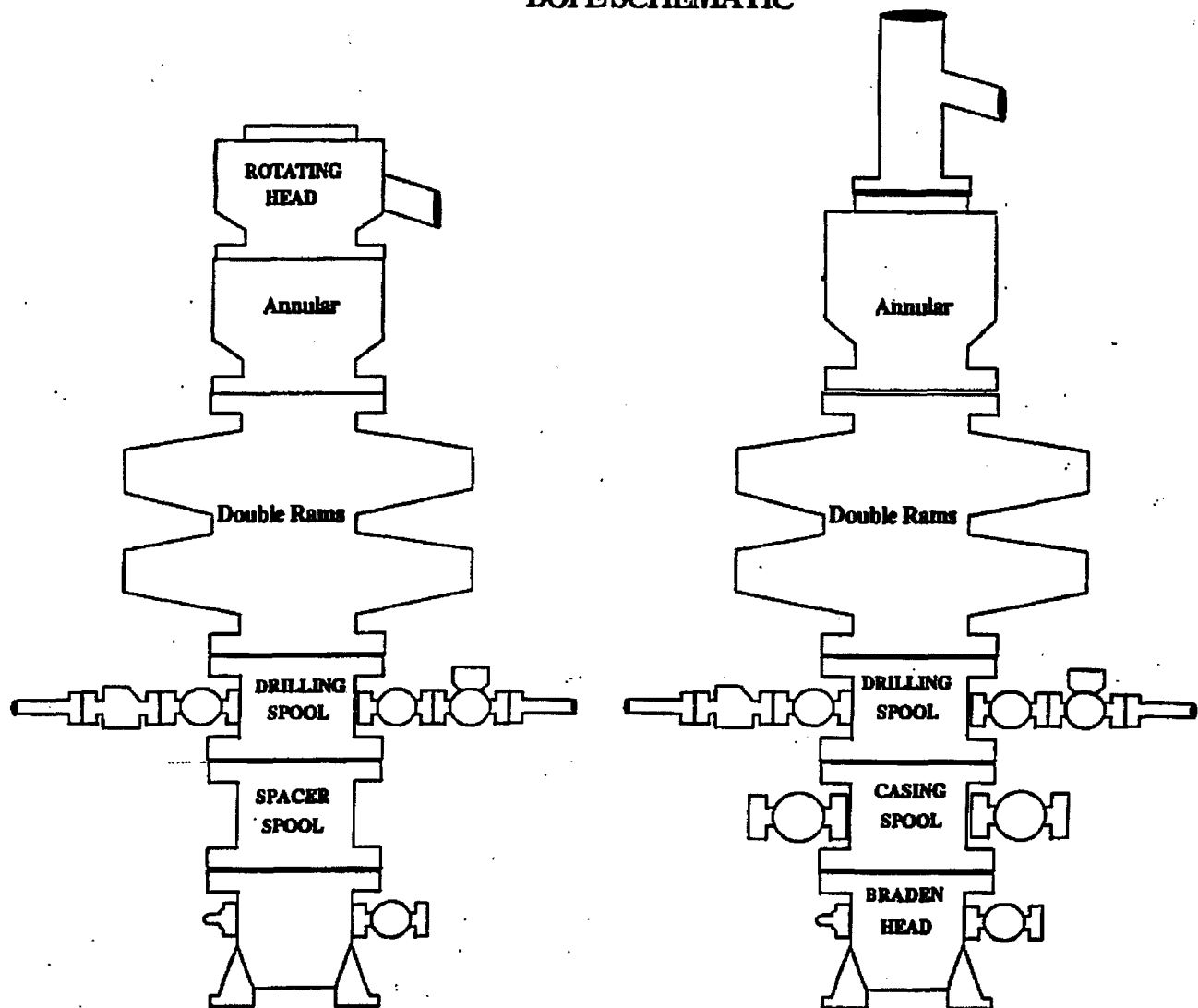
8 3/4"

5 1/2" / 17 / M75-110 / LTC @ ±14100'

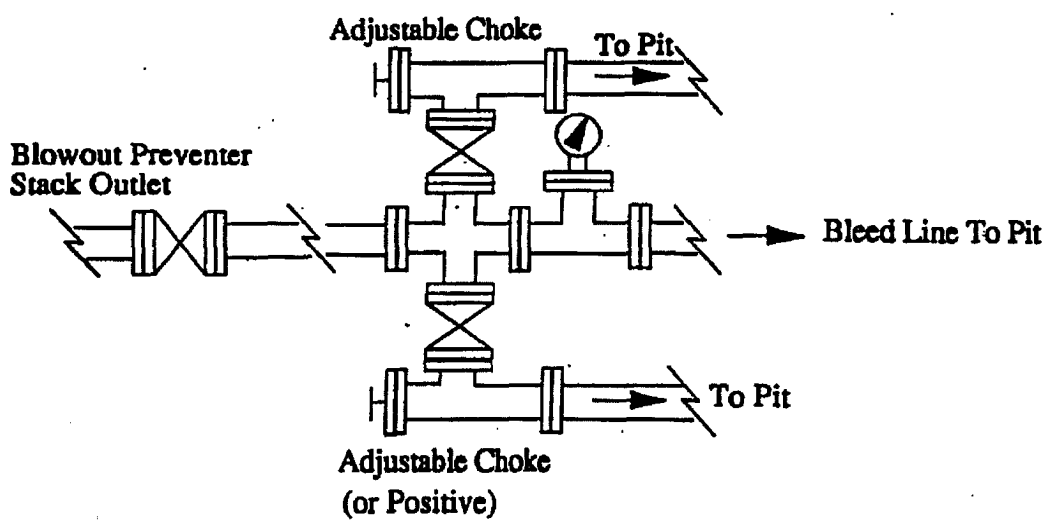
Cont'd ±2000 CF Halliburton Lt + ±1000 CF Super H

14410'

# BOPE SCHEMATIC



**Choke Manifold**



**Exhibit One**