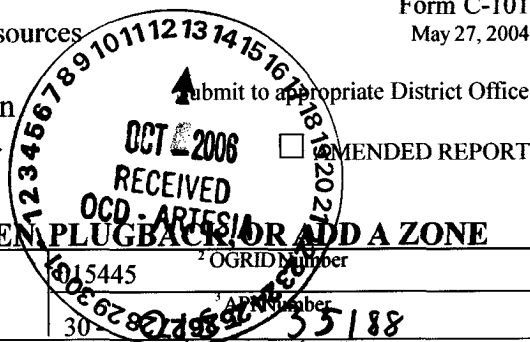


**Oil Conservation Division**  
1220 South St. Francis Dr.  
Santa Fe, NM 87505



**APPLICATION FOR PERMIT TO DRILL, RE-ENTER, DEEPEN, PLUGBACK, OR ADD A ZONE**

<sup>1</sup> Operator Name and Address MYCO INDUSTRIES, INC. P.O. BOX 840, ARTESIA, NM 88211		<sup>2</sup> OGRID# Number 15445 30
<sup>3</sup> Property Code 36102	<sup>4</sup> Property Name DANU 11 FEE COM	<sup>5</sup> APN Number 35188 <sup>6</sup> Well No. #1H
<sup>9</sup> Proposed Pool 1 Wildcat Wellcamp 97489		<sup>10</sup> Proposed Pool 2

### Surface Location

UL or lot no. <b>P</b>	Section <b>11</b>	Township <b>18S</b>	Range <b>23E</b>	Lot Idn	Feet from the <b>660'</b>	North/South line <b>SOUTH</b>	Feet from the <b>660'</b>	East/Westline <b>EAST</b>	County <b>EDDY</b>
---------------------------	----------------------	------------------------	---------------------	---------	------------------------------	----------------------------------	------------------------------	------------------------------	-----------------------

<sup>8</sup> Proposed Bottom Hole Location If Different From Surface

UL or lot no. <b>M</b>	Section <b>11</b>	Township <b>18S</b>	Range <b>23E</b>	Lot Idn	Feet from the <b>660'</b>	North/South line <b>SOUTH</b>	Feet from the <b>660'</b>	East/Westline <b>WEST</b>	County <b>EDDY</b>
---------------------------	----------------------	------------------------	---------------------	---------	------------------------------	----------------------------------	------------------------------	------------------------------	-----------------------

### Additional Well Information

<sup>11</sup> Work Type Code N	<sup>12</sup> Well Type Code G	<sup>13</sup> Cable/Rotary R	<sup>14</sup> Lease Type Code P	<sup>15</sup> Ground Level Elevation
<sup>16</sup> Multiple	<sup>17</sup> Proposed Depth 5200'	<sup>18</sup> Formation WOLFCAMP	<sup>19</sup> Contractor	<sup>20</sup> Spud Date 02/01/2007
Depth to Groundwater > 300'		Distance from nearest fresh water well > 1000'		Distance from nearest surface water > 1000'
Pit:	Liner: Synthetic <input checked="" type="checkbox"/> 12 milsthick Clay <input type="checkbox"/>	Pit Volume: 10100 bbls      Drilling Method:		
Closed-Loop System <input type="checkbox"/>	Fresh Water <input checked="" type="checkbox"/> Brine <input type="checkbox"/> Diesel/Oil-based <input type="checkbox"/> Gas/Air <input type="checkbox"/>			

## <sup>21</sup> Proposed Casing and Cement Program

Hole Size	Casing Size	Casing weight/foot	Setting Depth	Sacks of Cement	Estimated TOC
12-1/4"	8-5/8"	32# / J-55	1700'	400 SXS	CIRCULATE
7-7/8"	5-1/2"	17# / N-80	9250'	1200 SXS	CIRCULATE
NOTE: SET 40' OF 20" CONDUCTOR PIPE & CIRCULATE			CEMENT		

<sup>22</sup> Describe the proposed program. If this application is to DEEPEN or PLUG BACK, give the data on the present productive zone and proposed new productive zone. Describe the blowout prevention program, if any. Use additional sheets if necessary.

NOTIFY NMOCD OF SPUD AND WITNESS CMT. SURFACE CASING. INSTALL 3000# DOUBLE-RAM B.O.P. AND TEST DAILY. DRILL PILOT HOLE TO 5200'. PLUG BACK AND DRILL A 3400' LATERAL DUE WEST PER NMOCD RULE #111.

ATTACHED: PERMIT INFORMATION, C-102, GENERAL PIT PERMIT, H2S CONTINGENCY PLAN, C-144 (FRESH WATER FRAC PIT).

**\*NOTE: DETAILED WELL SURVEY PROFILE TO FOLLOW.**

<p>23 I hereby certify that the information given above is true and complete to the best of my knowledge and belief. I further certify that the drilling pit will be constructed according to NMOCD guidelines <input type="checkbox"/>, a general permit <input checked="" type="checkbox"/>, or an (attached) alternative OCD-approved plan <input type="checkbox"/>.</p>		OIL CONSERVATION DIVISION	
		<p>Approved by:</p> <p><b>BRYAN G. ARRANT</b></p> <p><b>DISTRICT II GEOLOGIST</b></p>	
<p>Printed Name: A.N. MUNCY, PELS <i>A.N. Muncy</i></p>		<p>Title:</p>	
<p>Title: OPERATIONS/EXPLORATION MGR.</p>		<p>Approval Date: <b>OCT 16 2006</b>      Expiration Date: <b>OCT 16 2007</b></p>	
<p>E-mail Address: <a href="mailto:anmuncy@mycoinc.com">anmuncy@mycoinc.com</a></p>			
<p>Date: 10/13/2006</p>	<p>Phone: (505)748-4289</p>	<p>Conditions of Approval: <b>NOTIFY OCD OF SPUD &amp; TIME TO WITNESS CEMENTING OF</b></p>	

**NOTIFY OCD OF SPUD & TIME  
TO WITNESS CEMENTING OF  
SURFACE CASING**

## State of New Mexico

## DISTRICT I

1625 N. FRENCH DR., HOBBBS, NM 88240

Energy, Minerals and Natural Resources Department

Form C-102

## DISTRICT II

1301 W. GRAND AVENUE, ARTESIA, NM 88210

## OIL CONSERVATION DIVISION

1220 SOUTH ST. FRANCIS DR.  
Santa Fe, New Mexico 87505Revised October 12, 2005  
Submit to Appropriate District Office  
State Lease - 4 Copies  
Fee Lease - 3 Copies

## DISTRICT III

1000 Rio Brazos Rd., Artec, NM 87410

## DISTRICT IV

1220 S. ST. FRANCIS DR., SANTA FE, NM 87505

## WELL LOCATION AND ACREAGE DEDICATION PLAT

☐ AMENDED REPORT

API Number	Pool Code 97489	Pool Name Wildcat; Wolfcamp
Property Code	Property Name DANU 11 FEE COM	Well Number 1H
OGRID No. 015445	Operator Name MYCO INDUSTRIES, INC.	Elevation 3894'

## Surface Location

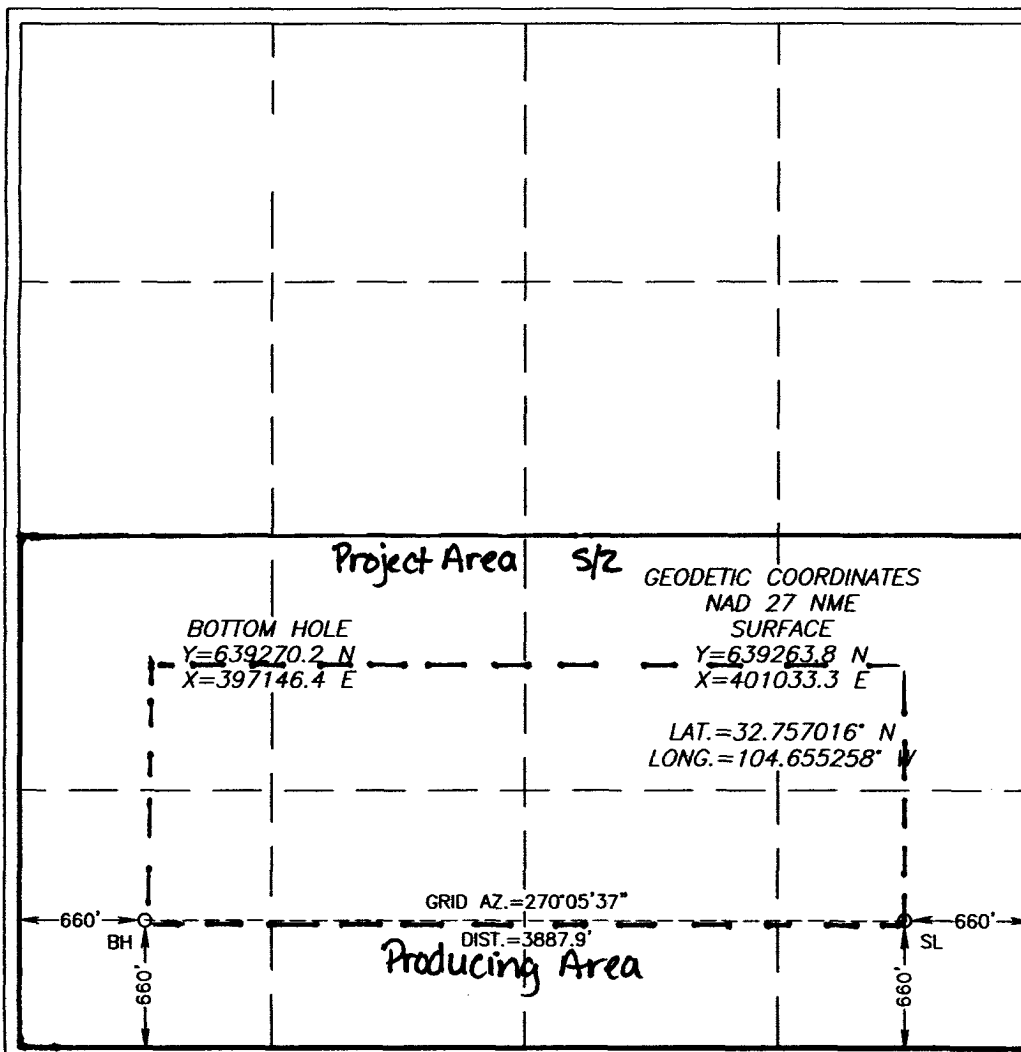
UL or lot No.	Section	Township	Range	Lot Idn	Feet from the	North/South line	Feet from the	East/West line	County
P	11	18-S	23-E		660	SOUTH	660	EAST	EDDY

## Bottom Hole Location If Different From Surface

UL or lot No.	Section	Township	Range	Lot Idn	Feet from the	North/South line	Feet from the	East/West line	County
M	11	18-S	23-E		660	SOUTH	660	WEST	EDDY

Dedicated Acres 320	Joint or Infill	Consolidation Code	Order No.
------------------------	-----------------	--------------------	-----------

NO ALLOWABLE WILL BE ASSIGNED TO THIS COMPLETION UNTIL ALL INTERESTS HAVE BEEN CONSOLIDATED  
OR A NON-STANDARD UNIT HAS BEEN APPROVED BY THE DIVISION



## OPERATOR CERTIFICATION

I hereby certify that the information herein is true and complete to the best of my knowledge and belief, and that this organization either owns a working interest or unleased mineral interest in the land including the proposed bottom hole location or has a right to drill this well at this location pursuant to a contract with an owner of such mineral or working interest, or to a voluntary pooling agreement or a compulsory pooling order heretofore entered by the division.

*AN MUNCY* PELS  
Signature Date 10/10/06

Printed Name

*AN MUNCY*

## SURVEYOR CERTIFICATION

I hereby certify that the well location shown on this plat was plotted from field notes of actual surveys made by me or under my supervision, and that the same is true and correct to the best of my belief.

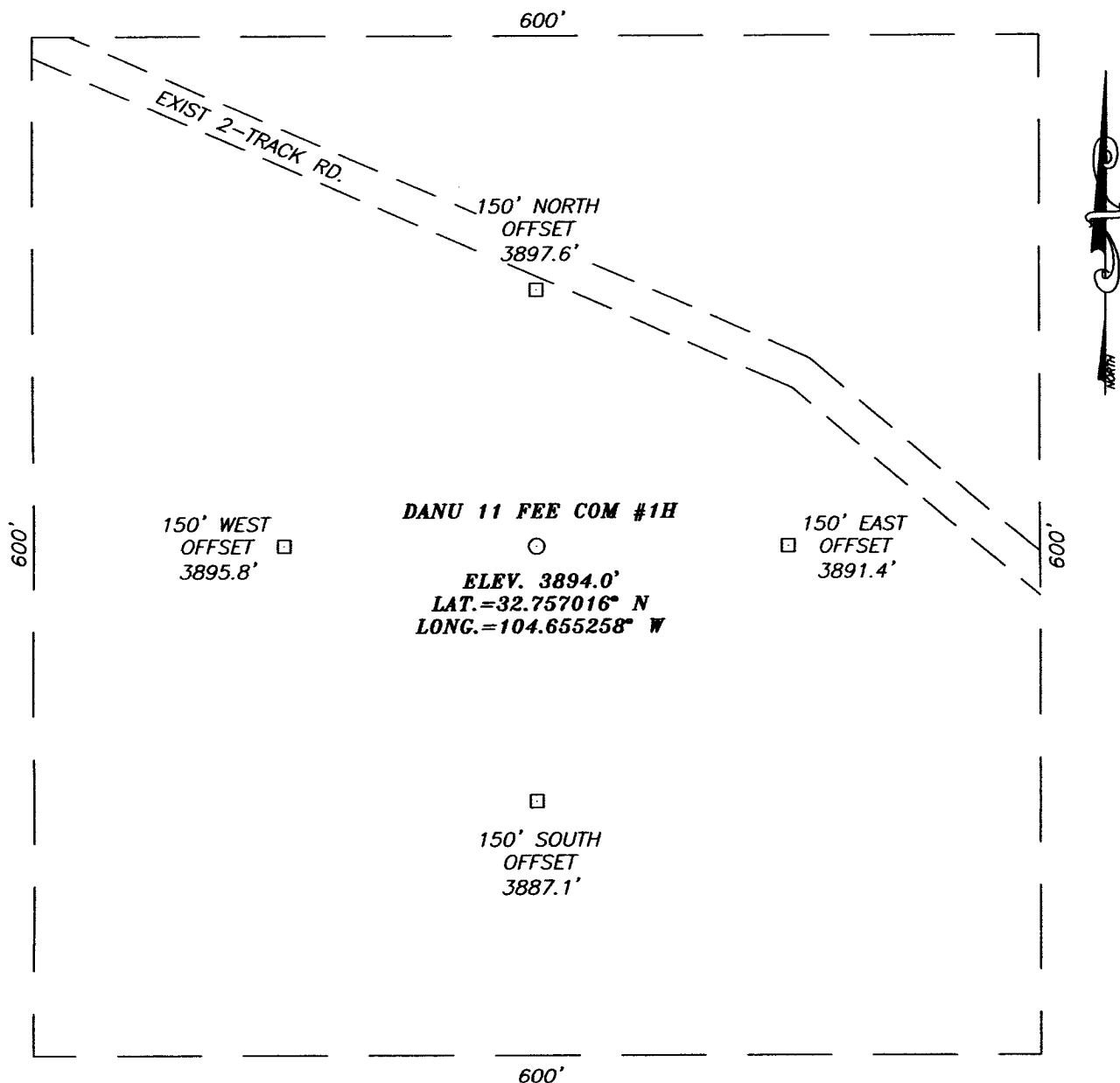
SEPTEMBER 29, 2006

Date Surveyed REV: 10/09/06 JR

Signature &amp; Seal of Professional Surveyor

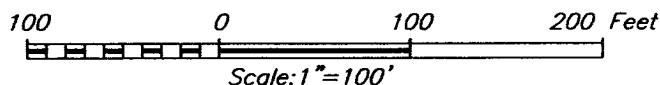
*GARY EIDSON*  
06.11.15265  
Certificate No. GARY EIDSON 12841  
RONALD S. EIDSON 3239

**SECTION 11, TOWNSHIP 18 SOUTH, RANGE 23 EAST, N.M.P.M.,**  
 EDDY COUNTY, NEW MEXICO



**DIRECTIONS TO LOCATION**

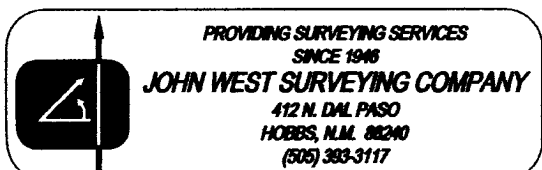
FROM THE INTERSECTION OF CO. RD. #10 (BRAID RD.) AND CO. RD. #8 (SANTA RD.) GO EAST ON CO. RD. #8 APPROX. 1.5 MILES, BEND NORTH AND GO APPROX. 200 FEET. TURN RIGHT AND GO EAST/SE APPROX. 0.8 MILES. TURN RIGHT AND GO SOUTH APPROX. 2.0 MILES TO AN LCX ENERGY WELL, CONTINUE SOUTH ON 2-TRACK RD. APPROX. 0.5 MILES, BEND SE AND GO APPROX. 1.0 MILES. THIS LOCATION IS APPROX. 180 FEET SOUTH.



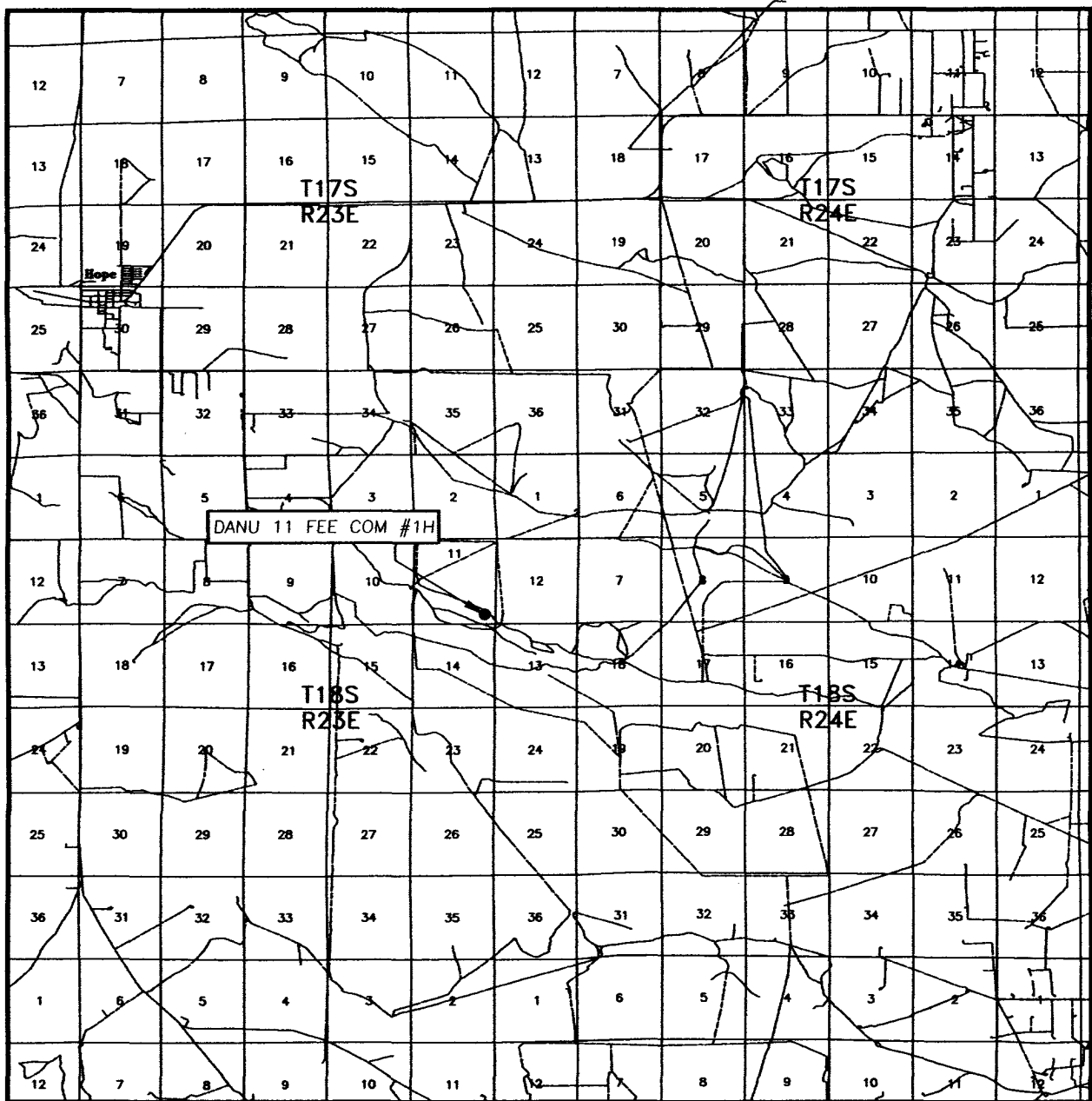
**MYCO INDUSTRIES, INC.**

DANU 11 FEE COM #1H  
 LOCATED 660 FEET FROM THE SOUTH LINE  
 AND 660 FEET FROM THE EAST LINE OF SECTION 11,  
 TOWNSHIP 18 SOUTH, RANGE 23 EAST, N.M.P.M.,  
 EDDY COUNTY, NEW MEXICO.

Survey Date: 09/27/06	Sheet 1 of 1 Sheets
W.O. Number: 06.11.1526	Dr By: J.R.
Date: 10/04/06	Disk: CD#6
06111526	Scale: 1"=100'



# VICINITY MAP



SCALE: 1" = 2 MILES

SEC. 11 TWP. 18-S RGE. 23-E

SURVEY N.M.P.M.

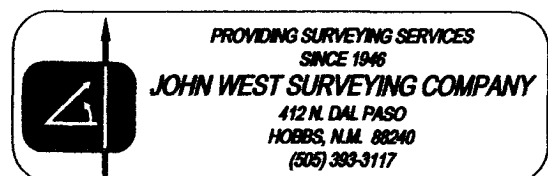
COUNTY EDDY STATE NEW MEXICO

DESCRIPTION 660' FSL & 660' FEL

ELEVATION 3894'

OPERATOR MYCO INDUSTRIES, INC.

LEASE DANU 11 FEE COM

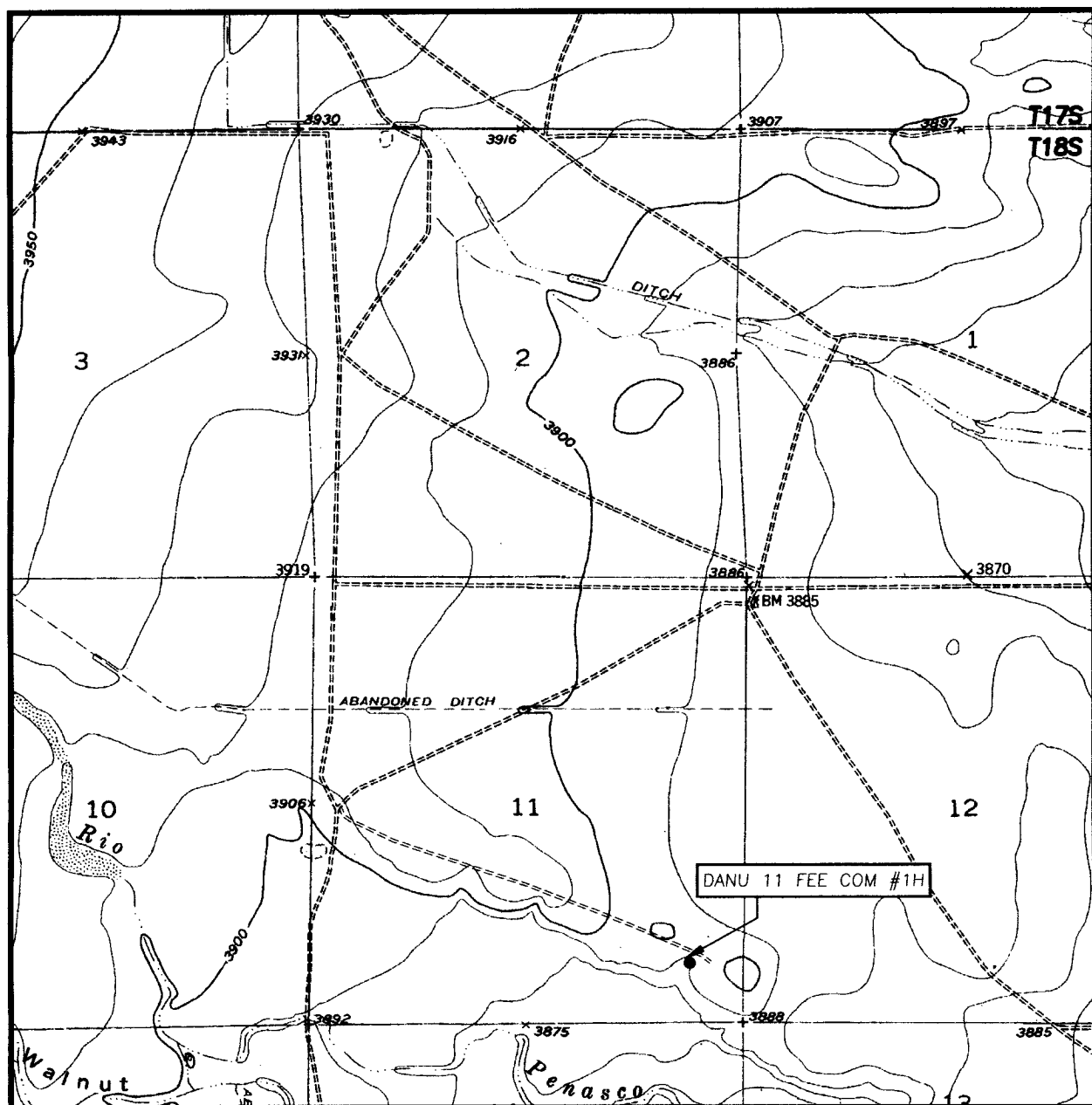


PROVIDING SURVEYING SERVICES  
SINCE 1946

**JOHN WEST SURVEYING COMPANY**

412 N. DAL PASO  
HOBBS, N.M. 88240  
(505) 393-3117

# LOCATION VERIFICATION MAP



SCALE: 1" = 2000'

CONTOUR INTERVAL:  
HOPE, N.M. - 10'

SEC. 11 TWP. 18-S RGE. 23-E

SURVEY N.M.P.M.

COUNTY EDDY STATE NEW MEXICO

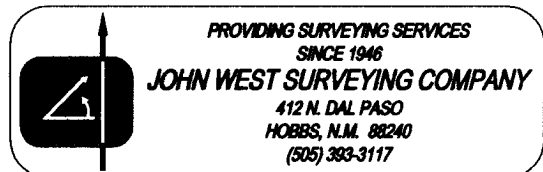
DESCRIPTION 660' FSL & 660' FEL

ELEVATION 3894'

OPERATOR MYCO INDUSTRIES, INC.

LEASE DANU 11 FEE COM

U.S.G.S. TOPOGRAPHIC MAP  
HOPE, N.M.



MYCO INDUSTRIES, INC.

**Well Name:** Danu 11 Fee Com #1H

**Location:**

SL 660' FSL & 660' FEL, Section 11, T-18-S, R-23-E, Eddy Co, NM

BHL 660' FSL & 660' FWL, Section 11, T-18-S, R-23-E, Eddy Co, NM

**Casing Program:**

Casing	Setting Depth	Hole Size	Casing Size	Casing Weight	Casing Grade	Desired TOC
Surface	1050'	12-1/4"	8-5/8"	32#	J-55	Surface
Production	9250'	7-7/8"	5-1/2"	17#	N-80	Surface

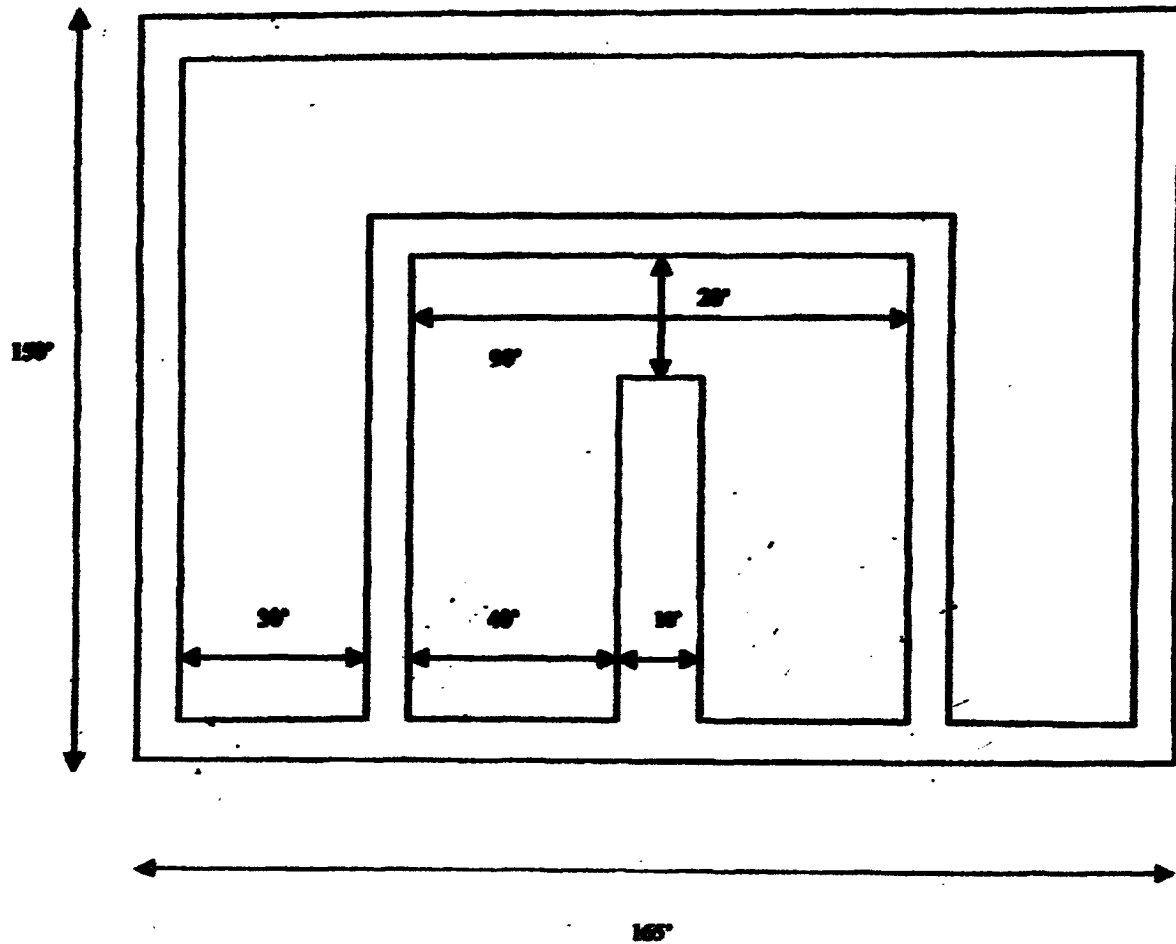
**Cement Program:**

Depth	No. Sacks	Slurries:
1050'	150	Lead: Premium Plus + 2% CaCl <sub>2</sub> + 3% Econolite + 1/4 pps Flocele
	250	Tail: Premium Plus + 2% CaCl <sub>2</sub> + 1/4 pps Flocele
9250'	500	Lead: Interfill C + 1/4 pps Flocele
	700	Tail: Premium Cement + 100% Acid Soluable Additive + 0.6% Halad®-344 + 0.8% Econolite + 0.2% HR-55

**Mud Program:**

Depth	Type	Weight (ppg)	Viscosity	Water Loss
0-1050'	Fresh-Gel	8.6-8.8	28-34	N/c
1050-4400'	Cut Brine	8.8-9.2	28-34	N/c
4400-5200'	Cut Brine	8.8-9.2	28-34	10-15
4468-9250'	Polymer (Lateral)	9.0-9.4	40-45	10-20

## Double Horseshoe Reserve Pit Design



Approximate Inside Reserve Volume: 4500 bbls  
Approximate Outside Reserve Volume: 5000 bbls



# NEW MEXICO ENERGY, MINERALS and NATURAL RESOURCES DEPARTMENT

**BILL RICHARDSON**

Governor

**Joanna Prukop**

Cabinet Secretary

**Mark E. Fesmire, P.E.**

Director

**Oil Conservation Division**

20 December 2004

Yates Petroleum Corporation  
105 South Fourth Street  
Artesia, New Mexico 88210

**RE: General Plan**

Dear Mr. Dolan:

The Artesia District of the Oil Conservation Division is in receipt of a General Plan (copy attached) submitted by Yates Petroleum Corporation dated 7 December, 2004. After review the Oil Conservation Division has accepted and approved the Plan. This plan shall be in effect as of 20 December, 2004 and will supersede the "General Plan" dated 14 April, 2004 submitted by Yates Petroleum Corporation.

Van Barton  
Field Rep. II



MARTIN YATES, III  
1912 - 1985  
FRANK W. YATES  
1936 - 1986



105 SOUTH FOURTH STREET  
ARTESIA, NEW MEXICO 88210-2118  
TELEPHONE (505) 748-1471

S. P. YATES  
CHAIRMAN OF THE BOARD  
JOHN A. YATES  
PRESIDENT  
PEYTON YATES  
EXECUTIVE VICE PRESIDENT  
RANDY G. PATTERSON  
SECRETARY  
DENNIS G. KINSEY  
TREASURER

Mr. Tim Gum  
Oil Conservation Division  
State of New Mexico  
1301 West Grand Ave.  
Artesia, NM 88210

December 7, 2004

**Re: General Plan  
Drilling, Workover, and Blowdown Pit design and closure.**

Dear Tim,

Yates Petroleum Corp. (Yates) appreciates your meeting with us on December 1, 2004 to help clarify some issues in connection with *Rule 50* and the *November 1, 2004 Pit and Below Grade Tank Guidelines*.

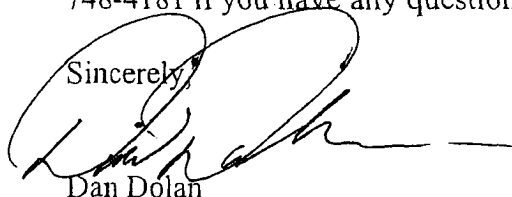
As you know Yates submitted and received approval of a general plan for opening and closing of drilling and workover pits on April 15, 2004. In an effort to simplify the required paperwork, we would now like to modify that plan to include more detailed information.

For purpose of this plan Yates, et al (Yates) includes:

1. Yates Petroleum Corp.
2. Yates Drilling Company
3. Abo Petroleum Corp.
4. Myco Industries, Inc.

The modified plan is attached for your review and approval. Please contact me at 505-748-4181 if you have any questions or need further information.

Sincerely,



Dan Dolan

**Yates Petroleum Corp. et al**  
**General Plan**  
**Pit Permitting, Construction and Closure**  
**December 7, 2004**

**1. Pit Permitting and Opening –**

- a. Application for the pit permit shall be made on the Application for Permit to Drill (APD). The APD will include the following:
  - i. Site Ranking.
  - ii. Reference to this “General Plan” approved by NMOCD.
  - iii. Description of the proposed disposal method as outlined below.
    - I. When deep trench burial is proposed, approval of the APD will constitute a permit for both the drilling pit and the encapsulation pit(s). *A separate Form C-144 will not be required.*
- b. All pits will be designed and constructed pursuant to Part II of *November 1, 2004 Pit and Below Grade Tank Guidelines (Guidelines)*. Pits shall be constructed as depicted in attached *Figures A, B, C or D* based on site specific requirements.

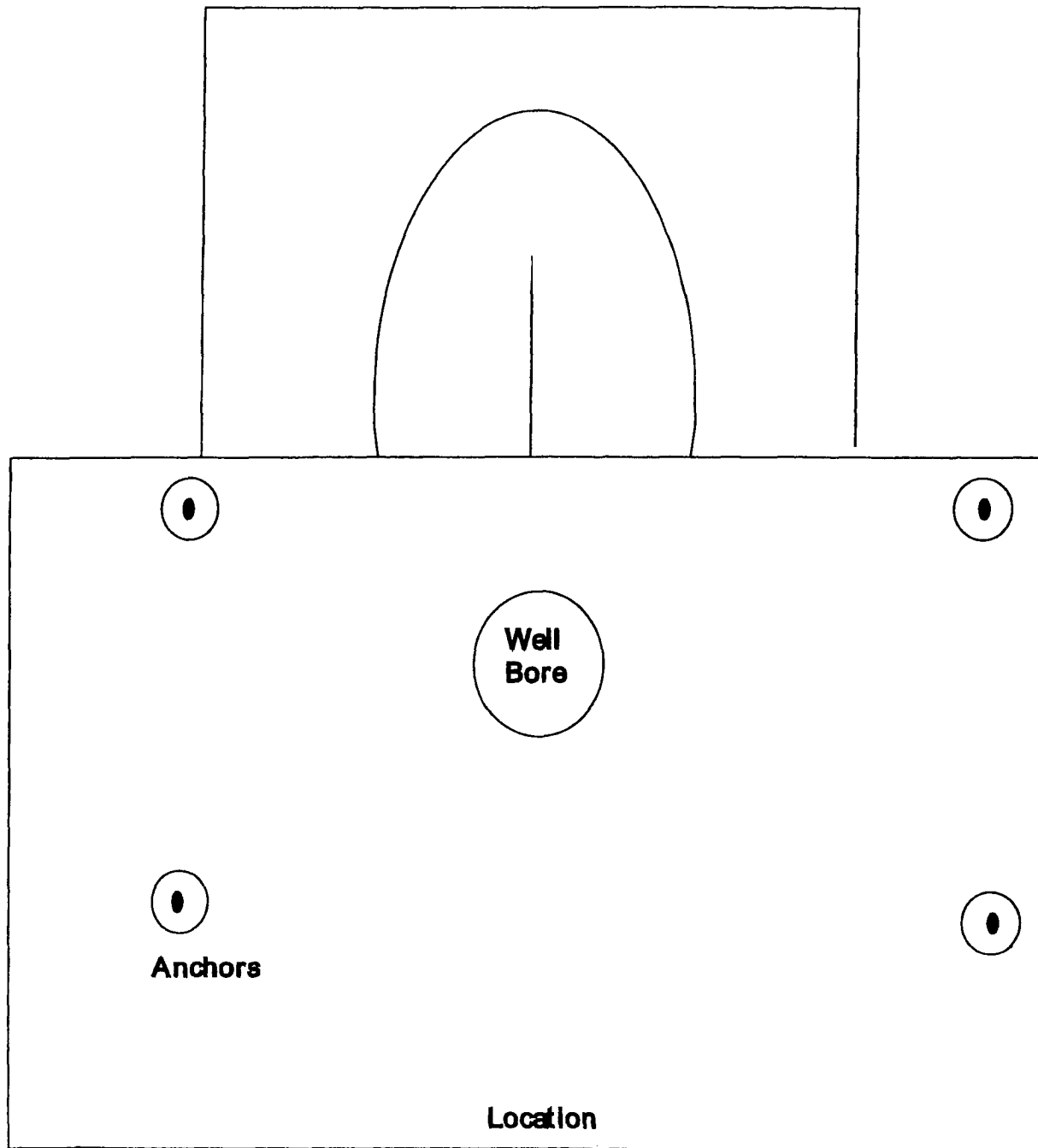
**2. Pit Closure –**Pits will be closed based on site specific conditions pursuant to Part IV of Guidelines by one of the following methods:

- a. Excavation and removal. Wastes will be excavated and disposed of at an off-site OCD-approved facility or location.
- b. Below Grade Encapsulation. Encapsulation will be pursuant to Part IV.B.2 of Guidelines.
- c. Capping and Encapsulation Insitu. Capping and encapsulation will be pursuant to Part IV.B.3(a) of Guidelines.
- d. Deep Trench Burial and Capping. Deep trench burial and capping will be pursuant to Part IV.B.3(b) of Guidelines. Attached *Figures E, F and G* depict standard types of encapsulation pits utilized by Yates. Each encapsulation trench type is designed to hold 2000 cubic yards of drill cuttings.
- e. Exemption. Yates may request an exemption on a site specific basis as provided for in 19.15.2.50 NMAC (Rule 50).

The proposed method for pit closure will be indicated on the APD as one of the above methods. Approval of the APD will constitute approval of the closure plan. No other closure plan will be submitted. Yates will notify OCD 48-hours prior to closure of pit and submit a C-144 when pit is closed.

If, due to site specific conditions encountered during the course of operations, Yates proposes to change the method of closure, a request outlining the new plan will be submitted on a C-144 for OCD approval prior to closure.

Figure A



Anchors 

**Yates Petroleum  
Standard Reserve Pit**

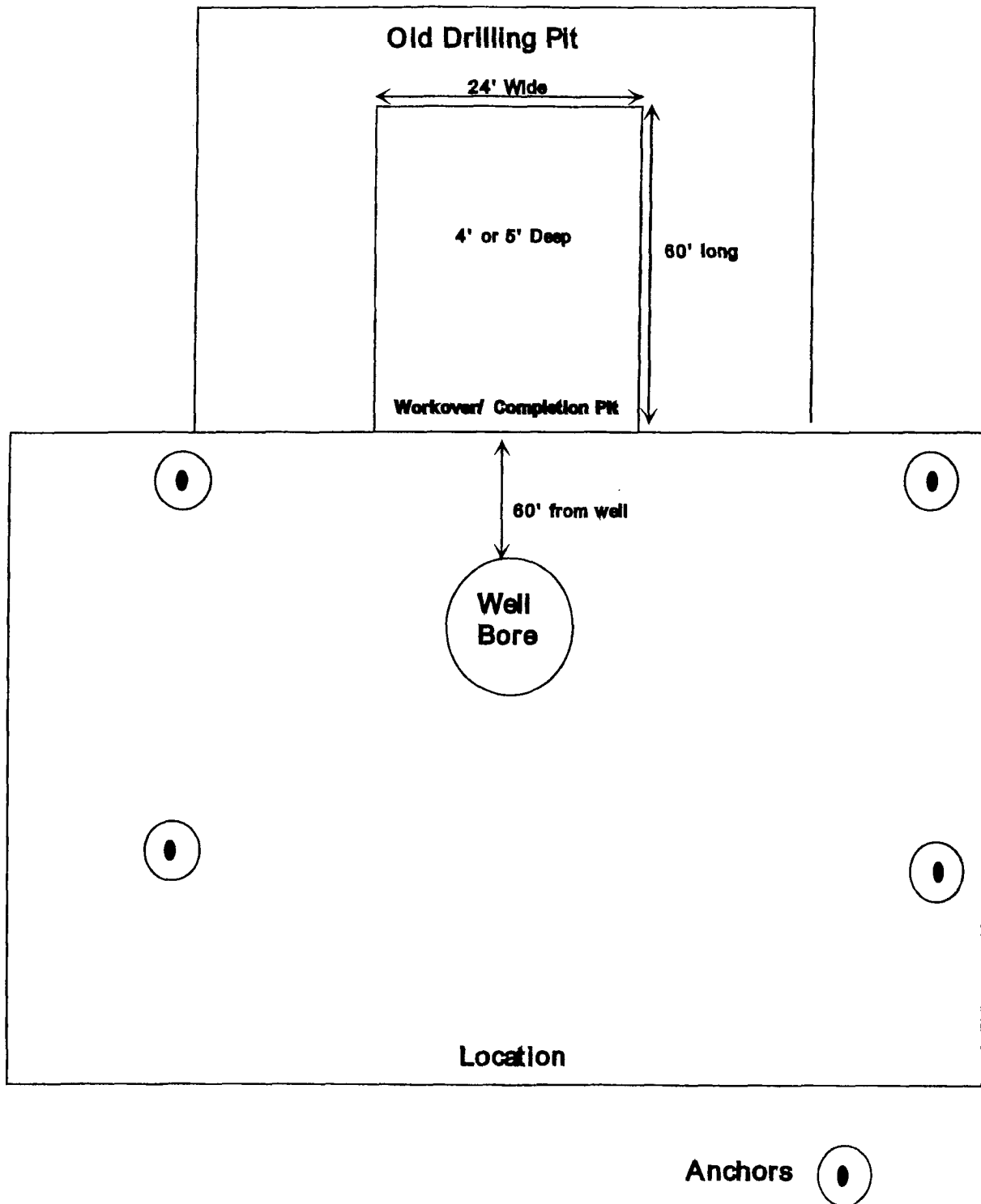
All Reserve Pits are double horse shoe.  
Size varies with depth of well

(Not to Scale)

12/8/04



Figure B



Yates Petroleum  
Workover/ Completion Pit Design

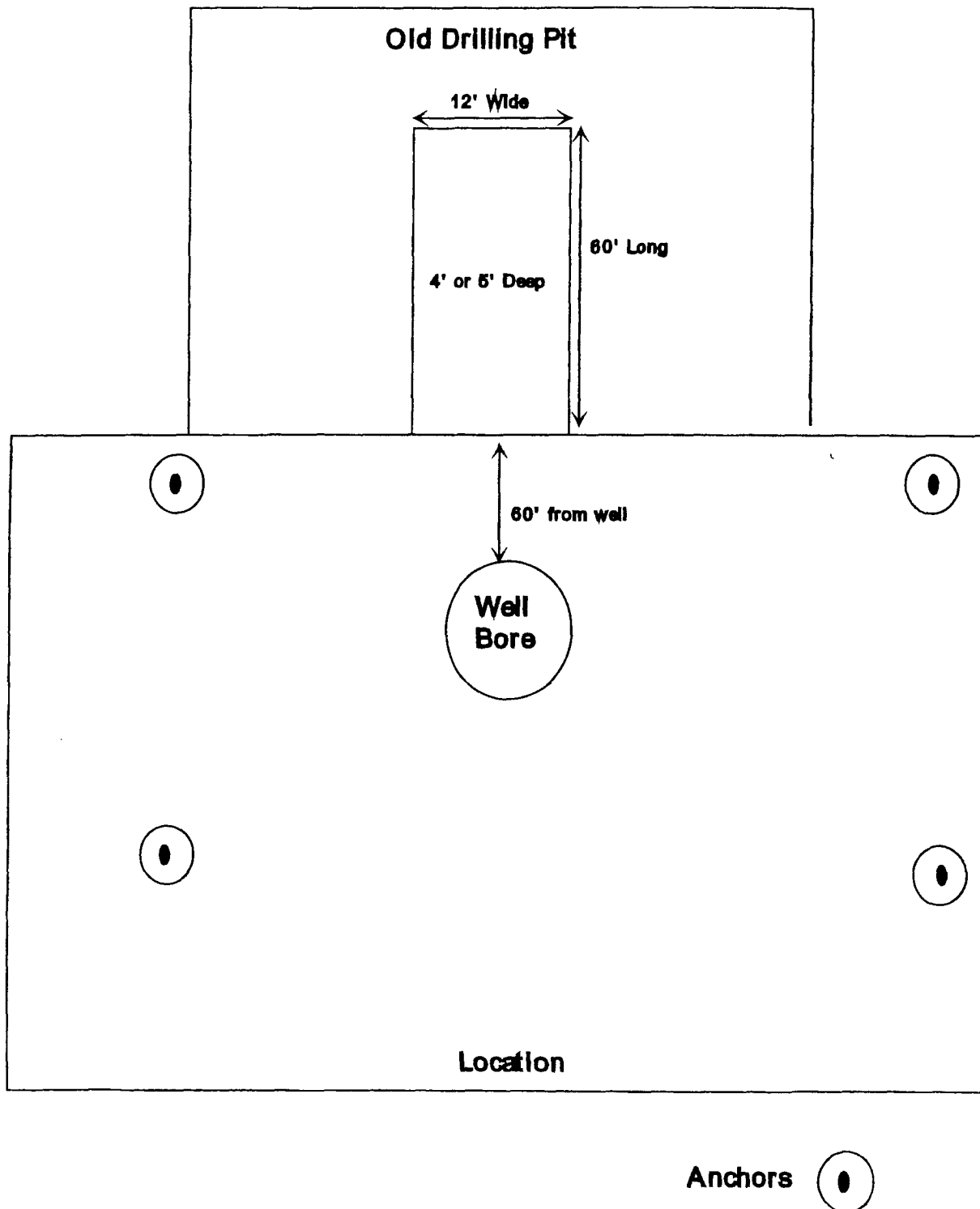
Built with Dozer

(Not to Scale)

12/8/04



**Figure C**



**Yates Petroleum  
Workover/ Completion Pit Design**

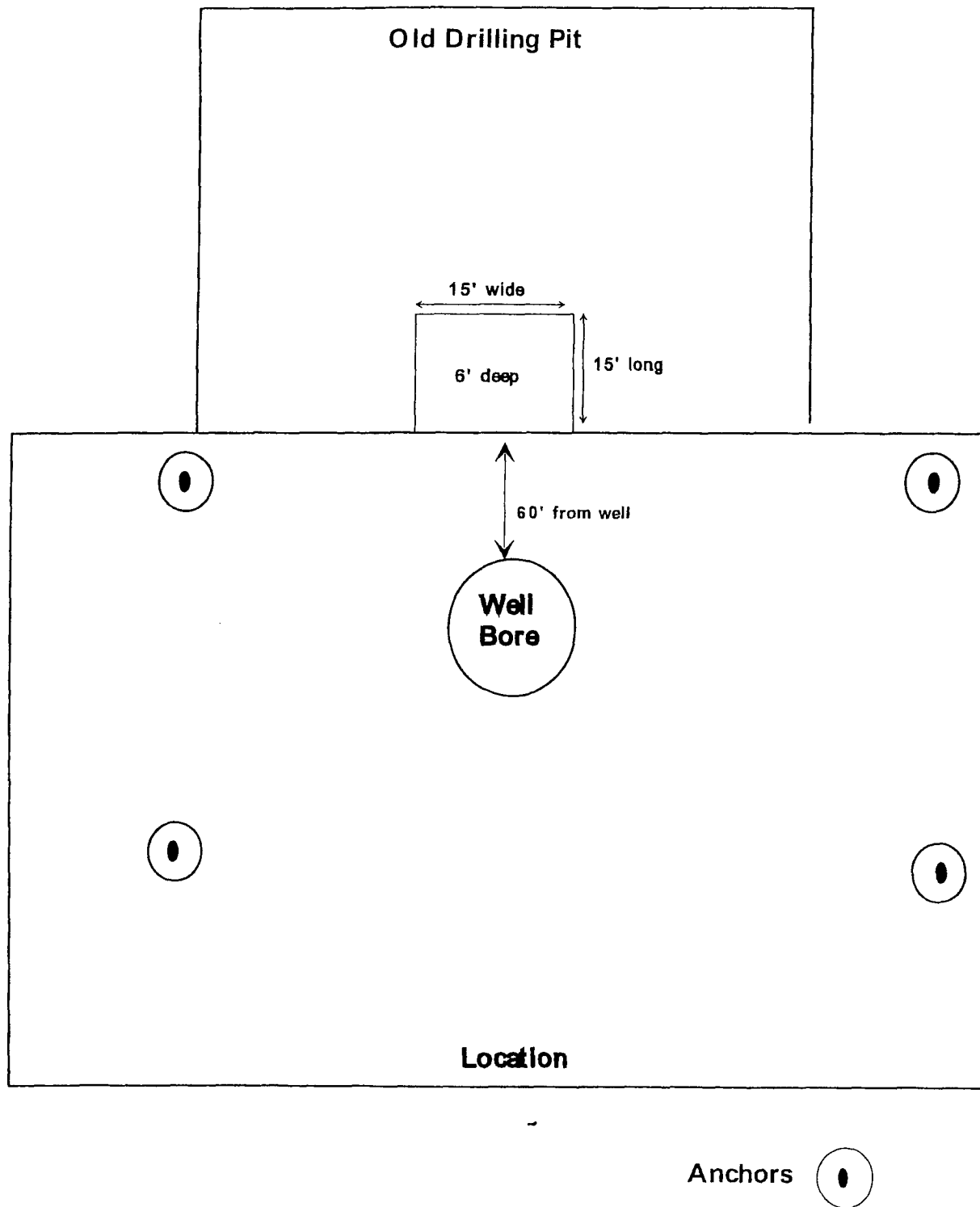
Built with Backhoe

12/8/04

(Not to Scale)



Figure D



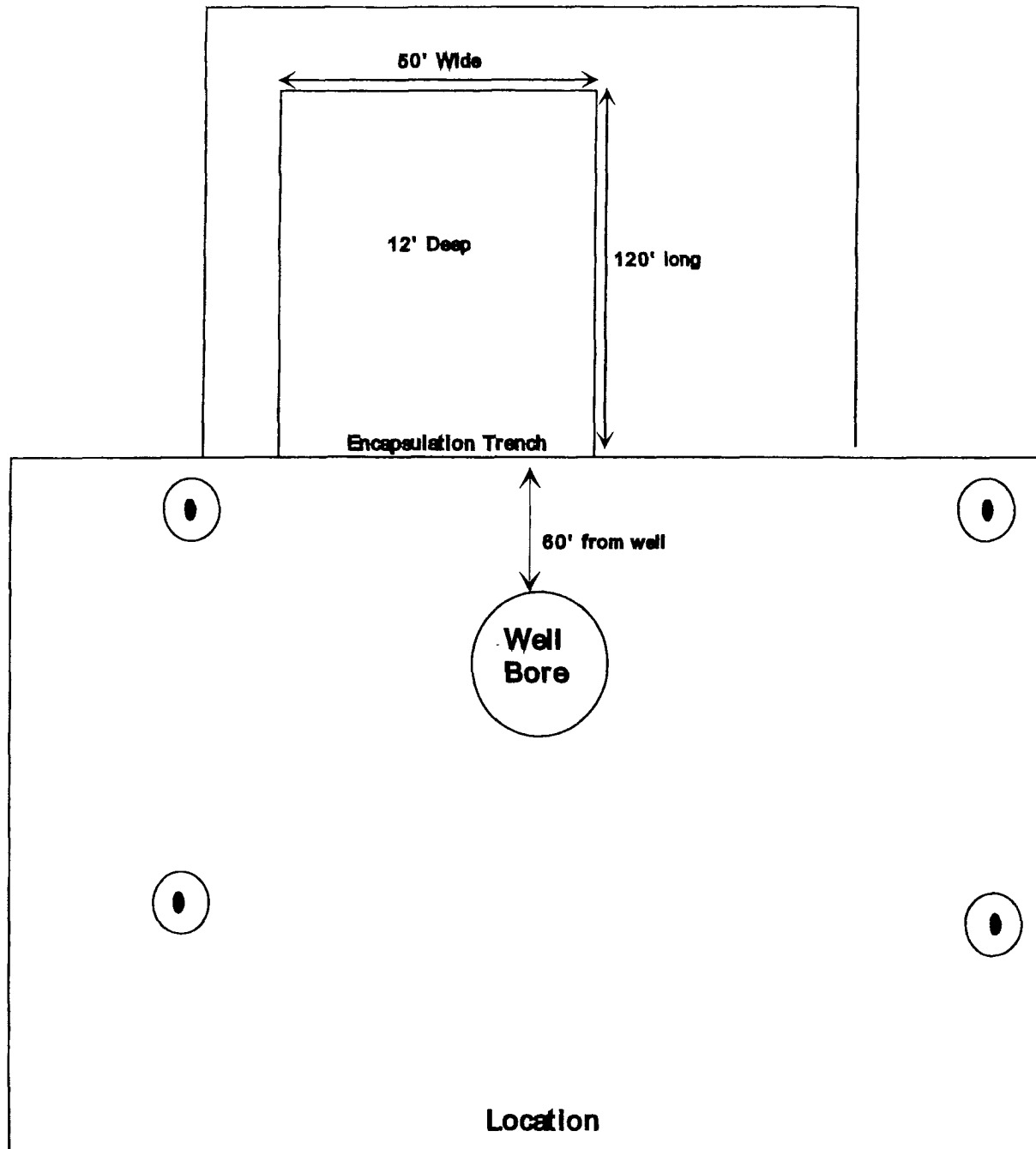
Yates Petroleum  
Workover/ Completion Pit Design  
Built with Backhoe

12/8/04



(Not to Scale)

Figure E



Anchors



Yates Petroleum  
Deep Trench Encapsulation

12/8/04

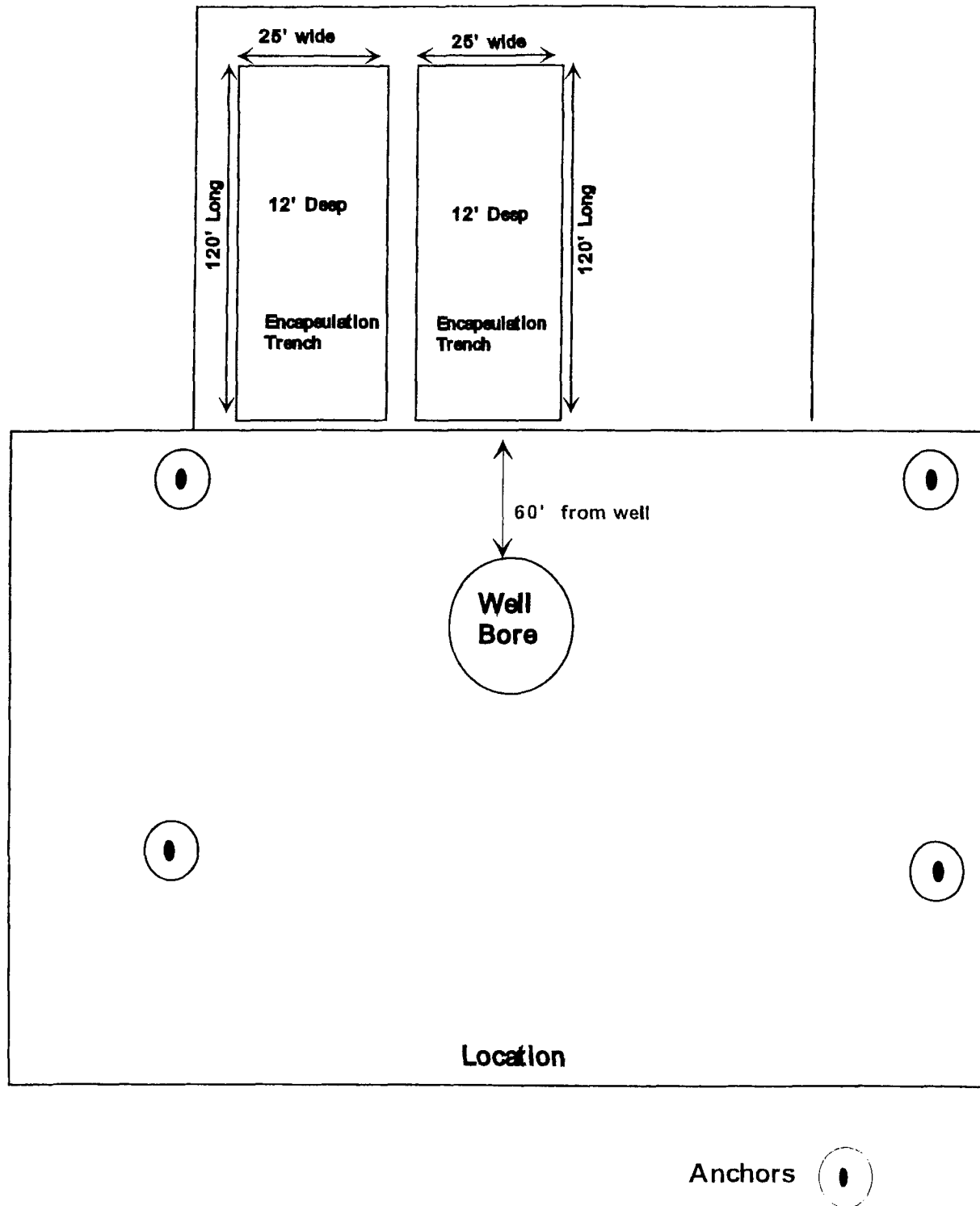
(Not to Scale)



**YATES**  
PETROLEUM  
CORPORATION



Figure F



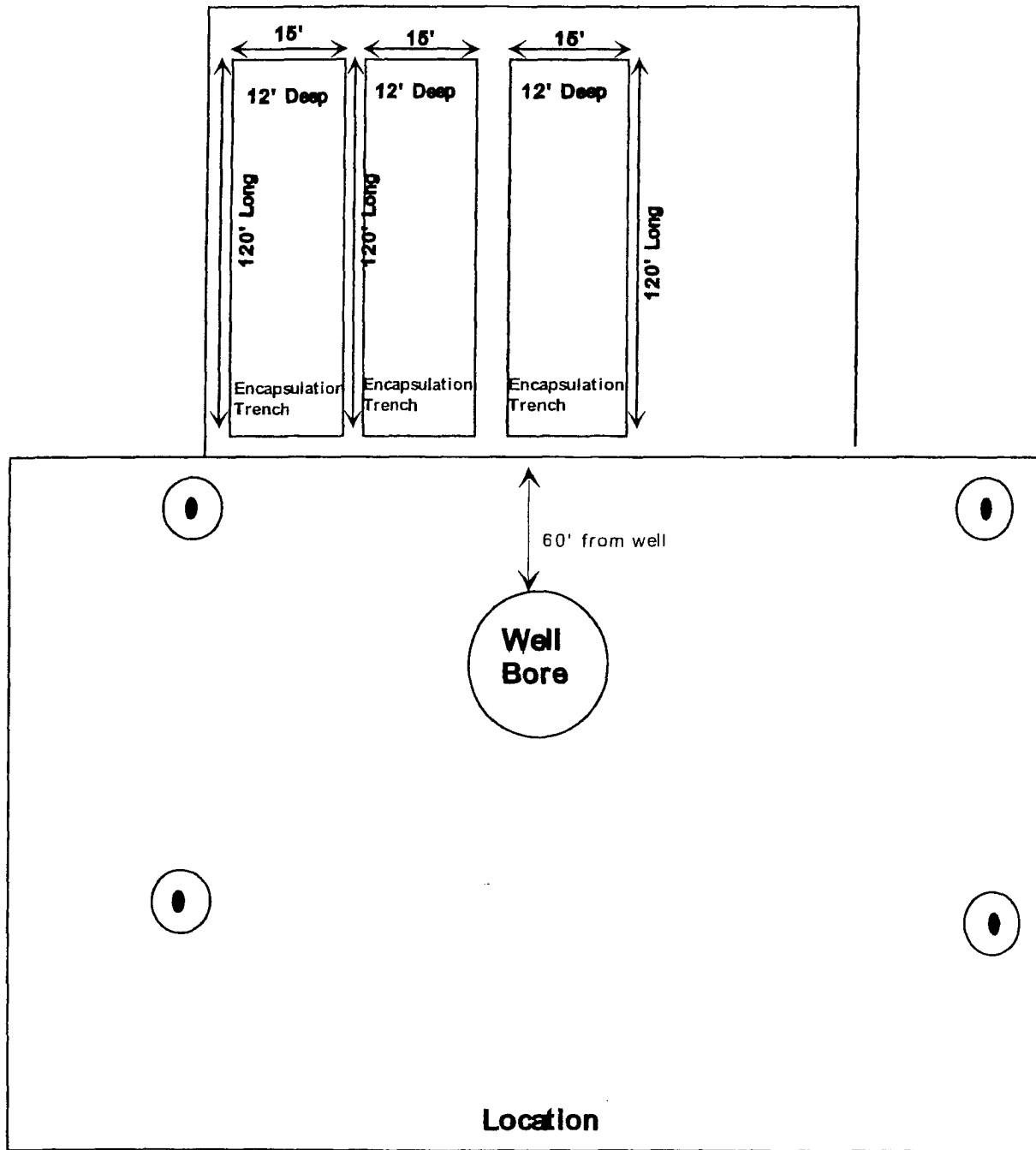
Yates Petroleum  
Deep Trench Encapsulation  
Built with Backhoe

12/8/04



(Not to Scale)

Figure G



Anchors

Yates Petroleum  
Deep Trench Encapsulation

12/8/04



(Not to Scale)



# NEW MEXICO ENERGY, MINERALS and NATURAL RESOURCES DEPARTMENT

**BILL RICHARDSON**

Governor

**Joanna Prukop**

Cabinet Secretary

**Mark E. Fesmire, P.E.**

Director

**Oil Conservation Division**

4 January 2005

Mr. Dan Dolan  
Yates Petroleum Corporation  
105 South Fourth Street  
Artesia, New Mexico 88210

**RE: General Plan – John A. Yates Jr., Oil Producer**

Dear Mr. Dolan:

The Artesia District of the Oil Conservation Division on 30 December, 2004 received a request for "John A. Yates Jr., Oil Producer" to be covered by the General Permit submitted by you on 20 December, 2004. This request is approved. John A. Yates Jr., Oil Producer will be added to the Yates Companies that are covered by the Plan.

---

Van Barton  
Field Rep. II

MARTIN YATES, III  
1912 - 1985  
FRANK W. YATES  
1936 - 1986



105 SOUTH FOURTH STREET  
ARTESIA, NEW MEXICO 88210-2118  
TELEPHONE (505) 748-1471

S. P. YATES  
CHAIRMAN OF THE BOARD  
JOHN A. YATES  
PRESIDENT  
PEYTON YATES  
EXECUTIVE VICE PRESIDENT  
RANDY G. PATTERSON  
SECRETARY  
DENNIS G. KINSEY  
TREASURER

Mr. Van Barton  
Oil Conservation Division  
State of New Mexico  
1301 West Grand Ave.  
Artesia, NM 88210

RECEIVED  
DEC 30 2004  
APPROPRIATE

December 30, 2004

**Re: General Plan  
Drilling, Workover, and Blowdown Pit Design and closure.**

Dear Van,

As you know Yates submitted and received approval of a general plan for opening and closing of drilling and workover pits on December 20, 2004, this was an amended plan, submitted for clarification and simplification of the original plan, approved by you on April 15, 2004.

We are requesting the addition of "John A. Yates Jr., Oil Producer", to the Yates Companies on the approved plan.

Please contact me at 505-748-4181 if you have any questions or need further information.

Sincerely,

A handwritten signature in black ink, appearing to read 'Daniel W. Dolan'.

Daniel W. Dolan CWC  
Environmental Regulatory Agent



MYCO INDUSTRIES, INC.  
OIL PRODUCERS  
POST OFFICE BOX 840  
ARTESIA, NEW MEXICO 88211-0840  
Phone (505) 748-1471

October 13, 2006

New Mexico Oil Conservation Division  
Bryan Arrant  
1301 W. Grand  
Artesia, New Mexico 88210

Re: Myco Industries, Inc.  
Danu 11 Fee Com #1H  
H2S Contingency Plan

Dear Mr. Arrant:

Sources at Myco Industries, Inc. have relayed information to me that they believe there will not be enough H2S found from the surface through the Wolfcamp Formation to meet the OCD's minimum requirements for the submission of a contingency plan per Rule 118.

Please note that I have enclosed our Contingency Plan for this well based on a remote chance that Rule 118 might become applicable.

Thank you,

MYCO INDUSTRIES, INC.

A.N. Muncy, PELS  
Operations/Engineering Manager

ANM:hp  
Enclosure

# **Myco Industries, Inc.**

**423 W. Main Street  
Artesia, NM 88210**

## **Hydrogen Sulfide (H<sub>2</sub>S) Contingency Plan**

**For**

**Danu 11 Fee Com #1H**

**660' FSL & 660' FEL (Surface)**

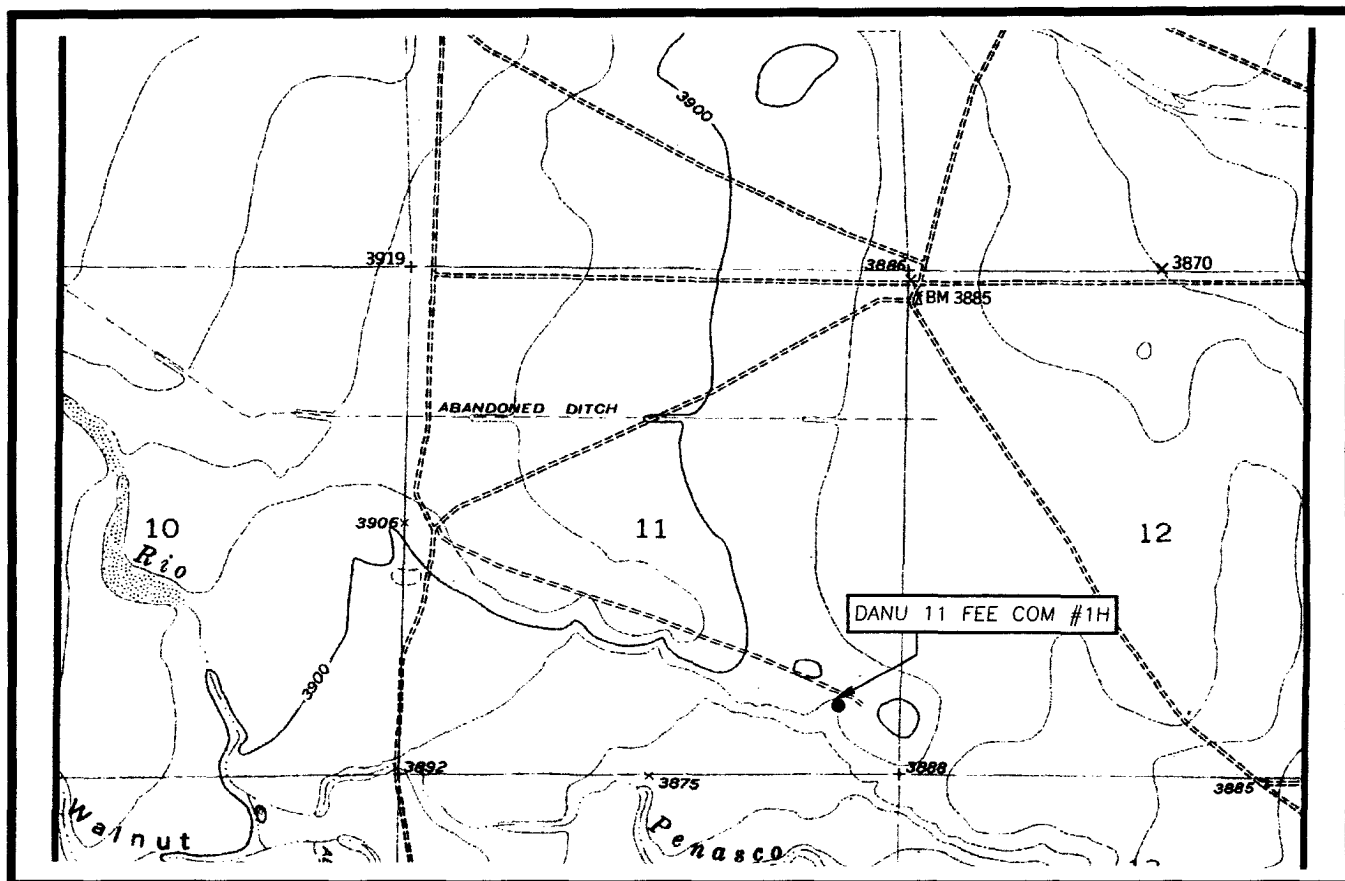
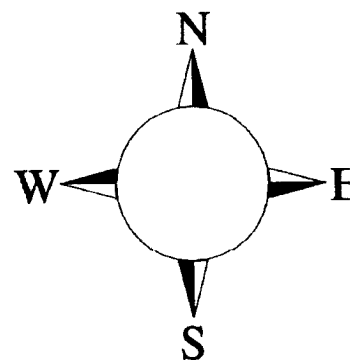
**660' FSL & 660' FWL (Bottom-Hole)**

**Sec-11, T-18S, R-23E**

**Eddy County NM**

## Danu 11 Fee Com #1H Location

This is an open drilling site. H<sub>2</sub>S monitoring equipment and emergency response equipment will be used within 500' of zones known to contain H<sub>2</sub>S, including warning signs, wind indicators and H<sub>2</sub>S monitor.



## Emergency Procedures

In the case of a release of gas containing H<sub>2</sub>S, the first responder(s) must isolate the area and prevent entry by other persons into the 100 ppm ROE. Additionally the first responder(s) must evacuate any public places encompassed by the 100 ppm ROE. First responder(s) must take care not to injure themselves during this operation. Company and/or local officials must be contacted to aid in this operation. Evacuation of the public should be beyond the 100 ppm ROE.

All responders must have training in the detection of H<sub>2</sub>S, measures for protection against the gas, equipment used for protection and emergency response. Additionally, responders must be equipped with H<sub>2</sub>S monitors and air packs in order to control the release. Use the "buddy system" to ensure no injuries during the response.

## Ignition of Gas Source

Should control of the well be considered lost and ignition considered, take care to protect against exposure to Sulfur Dioxide (SO<sub>2</sub>). Intentional ignition must be coordinated with the NMOCD and local officials. Additionally the NM State Police may become involved. NM State Police shall be the Incident Command on scene of any major release. Take care to protect downwind whenever there is an ignition of the gas

## Characteristics of H<sub>2</sub>S and SO<sub>2</sub>

Common Name	Chemical Formula	Specific Gravity	Threshold Limit	Hazardous Limit	Lethal Concentration
Hydrogen Sulfide	H <sub>2</sub> S	1.189 Air = 1	10 ppm	100 ppm/hr	600 ppm
Sulfur Dioxide	SO <sub>2</sub>	2.21 Air = 1	2 ppm	N/A	1000 ppm

## Contacting Authorities

Myco personnel must liaison with local and state agencies to ensure a proper response to a major release. Additionally, the OCD must be notified of the release as soon as possible but no later than 4 hours. Agencies will ask for information such as type and volume of release, wind direction, location of release, etc. Be prepared with all information available. The following call list of essential and potential responders has been prepared for use during a release. Myco Company response must be in coordination with the State of New Mexico's 'Hazardous Materials Emergency Response Plan' (HMER)



## ***Myco Industries, Inc. Phone Numbers***

---

Myco Office ..... (505) 748-4280  
Nelson Muncy/Operations Engineering Manager..... (505) 748-4289  
..... (505) 308-3502  
Carlos Guerrero/Field Supervisor ..... (505) 746-7318  
..... (505) 513.2492  
Artesia Answering Service ..... (505) 748-4302  
(During non-office hours)

## **Agency Call List**

### **Eddy County (505)**

#### **Artesia**

State Police..... 746-2703  
City Police..... 746-2703  
Sheriff's Office ..... 746-9888  
Ambulance ..... 911  
Fire Department ..... 746-2701  
LEPC (Local Emergency Planning Committee) ..... 746-2122  
NMOCD..... 748-1283

#### **Carlsbad**

State Police..... 885-3137  
City Police..... 885-2111  
Sheriff's Office ..... 887-7551  
Ambulance ..... 911  
Fire Department ..... 885-2111  
LEPC (Local Emergency Planning Committee)..... 887-3798  
US Bureau of Land Management..... 887-6544

New Mexico Emergency Response Commission (Santa Fe) (505)476-9600  
24 HR .....(505) 827-9126  
New Mexico State Emergency Operations Center.....(505) 476-9635  
National Emergency Response Center (Washington, DC) ...(800) 424-8802

#### **Other**

Boots & Coots IWC .....1-800-256-9688 or (281) 931-8884  
Cudd Pressure Control.....(915) 699-0139 or (915) 563-3356  
Halliburton .....(505) 746-2757  
B. J. Services.....(505) 746-3569

Flight For Life -4000 24th St, Lubbock, TX .....(806) 743-9911  
Aerocare -Rr 3 Box 49f, Lubbock, TX .....(806) 747-8923  
Med Flight Air Amb 2301 Yale Blvd SE #D3, Albuq, NM .....(505) 842-4433  
S B Air Med Svc 2505 Clark Carr Loop SE, Albuq, NM .....(505) 842-4949

District I  
1625 N. French Dr., Hobbs, NM 88240  
District II  
1301 W. Grand Avenue, Artesia, NM 88210  
District III  
1000 Rio Brazos Road, Aztec, NM 87410  
District IV  
1220 S. St. Francis Dr., Santa Fe, NM 87505

State of New Mexico  
Energy Minerals and Natural Resources

Oil Conservation Division  
1220 South St. Francis Dr.  
Santa Fe, NM 87505

Form C-144  
June 1, 2004

For drilling and production facilities, submit to appropriate NMOCD District Office.  
For downstream facilities, submit to Santa Fe office

**Pit or Below-Grade Tank Registration or Closure**

Is pit or below-grade tank covered by a "general plan"? Yes ☐ No ☐

Type of action: Registration of a pit or below-grade tank ☐ Closure of a pit or below-grade tank ☐

Operator: Myco Industries, Inc. Telephone: 505.748.4288 e-mail address: hannah@mycoinc.com  
Address: P.O. Box 840, Artesia, New Mexico 88210  
Facility or well name: General Fresh Water Frac Pit API #: \_\_\_\_\_ U/L or Qtr/Qtr \_\_\_\_\_ Sec 11 T 18S R 23E  
County: Eddy Latitude \_\_\_\_\_ Longitude \_\_\_\_\_ NAD: 1927 ☐ 1983 ☐  
Surface Owner: Federal ☐ State ☐ Private ☒ Indian ☐

<b>Pit</b> Type: Drilling <input checked="" type="checkbox"/> Production <input checked="" type="checkbox"/> Disposal <input type="checkbox"/> Workover <input type="checkbox"/> Emergency <input type="checkbox"/> Lined <input checked="" type="checkbox"/> Unlined <input type="checkbox"/> Liner type: Synthetic <input checked="" type="checkbox"/> Thickness <u>12</u> mil Clay <input type="checkbox"/> Pit Volume <u>40,000</u> bbl	<b>Below-grade tank</b> Volume: _____ bbl Type of fluid: _____ Construction material: _____ Double-walled, with leak detection? Yes <input type="checkbox"/> If not, explain why not. _____	
Depth to ground water (vertical distance from bottom of pit to seasonal high water elevation of ground water.)	Less than 50 feet	(20 points)
	50 feet or more, but less than 100 feet	(10 points)
	<u>100 feet or more</u>	<u>( 0 points)</u>
Wellhead protection area: (Less than 200 feet from a private domestic water source, or less than 1000 feet from all other water sources.)	Yes	(20 points)
	<u>No</u>	<u>( 0 points)</u>
Distance to surface water: (horizontal distance to all wetlands, playas, irrigation canals, ditches, and perennial and ephemeral watercourses.)	Less than 200 feet	(20 points)
	200 feet or more, but less than 1000 feet	(10 points)
	<u>1000 feet or more</u>	<u>( 0 points)</u>
<b>FRESH WATER FRAC PIT</b>	<b>Ranking Score (Total Points)</b>	<b>0</b>

**If this is a pit closure:** (1) Attach a diagram of the facility showing the pit's relationship to other equipment and tanks. (2) Indicate disposal location: (check the onsite box if your are burying in place) onsite ☐ offsite ☐ If offsite, name of facility \_\_\_\_\_. (3) Attach a general description of remedial action taken including remediation start date and end date. (4) Groundwater encountered: No ☐ Yes ☐ If yes, show depth below ground surface \_\_\_\_\_ ft. and attach sample results. (5) Attach soil sample results and a diagram of sample locations and excavations.

Additional Comments:

I hereby certify that the information above is true and complete to the best of my knowledge and belief. I further certify that the above-described pit or below-grade tank has been/will be constructed or closed according to NMOCD guidelines ☐, a general permit ☒, or an (attached) alternative OCD-approved plan ☐.

Date: 10-13-2006

Printed Name/Title Hannah Palomin/Engr-Land Technician

Signature

*Hannah Palomin*

Your certification and NMOCD approval of this application/closure does not relieve the operator of liability should the contents of the pit or tank contaminate ground water or otherwise endanger public health or the environment. Nor does it relieve the operator of its responsibility for compliance with any other federal, state, or local laws and/or regulations.

Approval:

Printed Name/Title \_\_\_\_\_

Signature \_\_\_\_\_

Date: \_\_\_\_\_