

**DISTRICT I**  
1825 N. French Dr., Hobbs, NM 88240

**DISTRICT II**  
811 South First, Artesia, NM 88210

**DISTRICT III**  
1000 Rio Brazos Rd., Artec, NM 87410

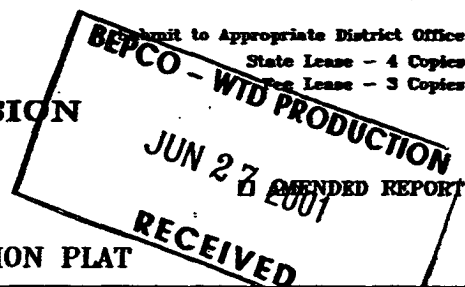
**DISTRICT IV**  
2040 South Pacheco, Santa Fe, NM 87506

State of New Mexico  
Energy, Minerals and Natural Resources Department

Form C-102  
Revised March 17, 1999

**OIL CONSERVATION DIVISION**

2040 South Pacheco  
Santa Fe, New Mexico 87504-2088



**WELL LOCATION AND ACREAGE DEDICATION PLAT**

API Number 30-D15-31973		Pool Code 47545	Pool Name Nash Draw (Delaware/B5/Avalon Sand)
Property Code 001796	Property Name POKER LAKE UNIT		Well Number 186
OGRID No. 001801	Operator Name BASS ENTERPRISES PRODUCTION COMPANY		Elevation 3270'

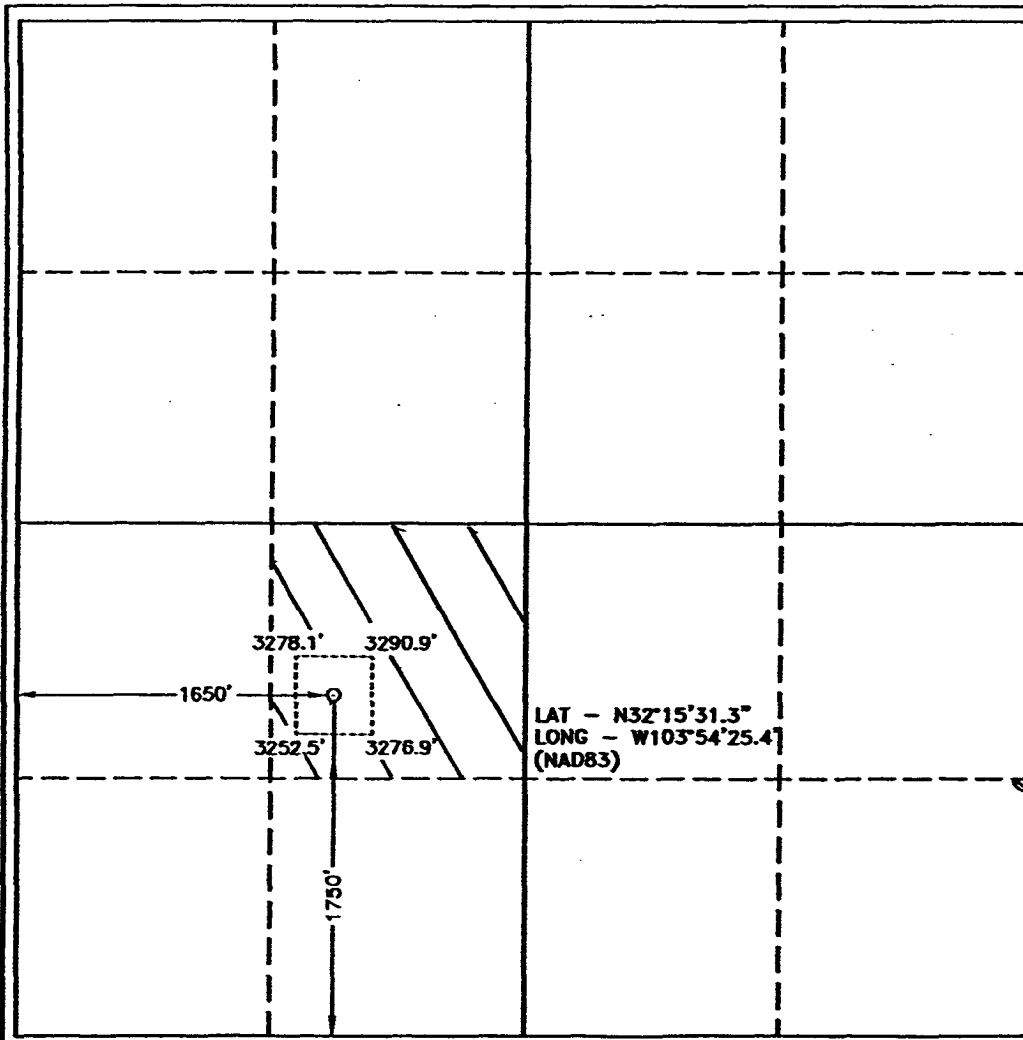
**Surface Location**

UL or lot No.	Section	Township	Range	Lot Idn	Feet from the	North/South line	Feet from the	East/West line	County
K	32	23 S	30 E		1750	SOUTH	1650	WEST	EDDY

**Bottom Hole Location If Different From Surface**

UL or lot No.	Section	Township	Range	Lot Idn	Feet from the	North/South line	Feet from the	East/West line	County
Dedicated Acres	Joint or Infill	Consolidation Code	Order No.						
40	N								

NO ALLOWABLE WILL BE ASSIGNED TO THIS COMPLETION UNTIL ALL INTERESTS HAVE BEEN CONSOLIDATED  
OR A NON-STANDARD UNIT HAS BEEN APPROVED BY THE DIVISION



**OPERATOR CERTIFICATION**

I hereby certify the the information contained herein is true and complete to the best of my knowledge and belief.

*William R. Dannels*  
Signature

William R. Dannels  
Printed Name

Division Drilling Supt.  
Title

8/18/04  
Date

**SURVEYOR CERTIFICATION**

I hereby certify that the well location shown on this plat was plotted from field notes of actual surveys made by me or under my supervision, and that the same is true and correct to the best of my belief.

June 19, 2001  
Date Surveyed

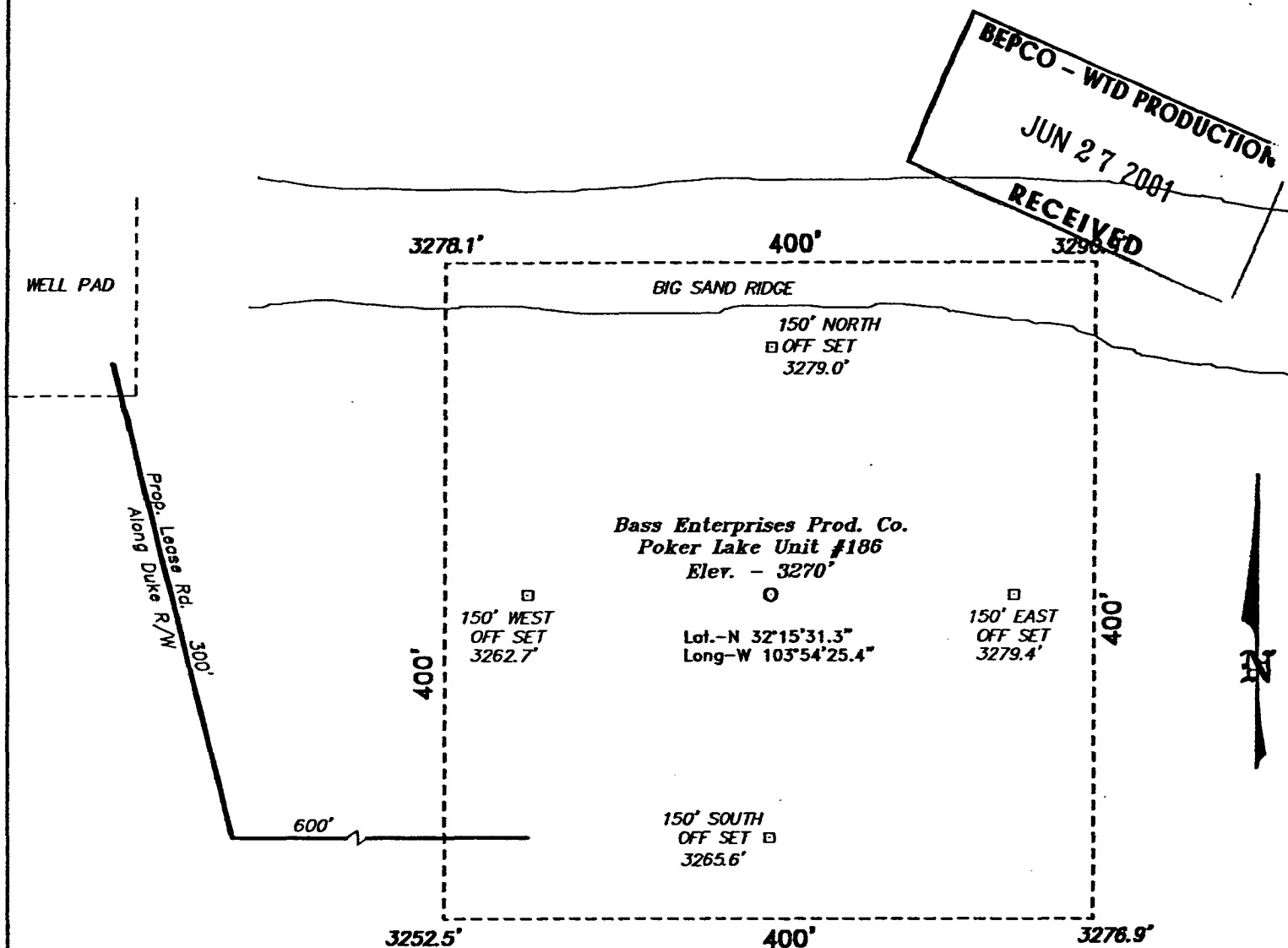
GARY L. JONES  
Signature & Seal of Professional Surveyor

7977  
O. No. 15528

Certificate No. 7977

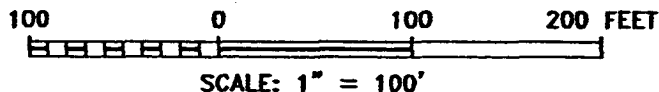
**BASIN SURVEYS**

**SECTION 32, TOWNSHIP 23 SOUTH, RANGE 30 EAST, N.M.P.M.,  
EDDY COUNTY, NEW MEXICO.**



**DIRECTIONS TO LOCATION:**

FROM THE JUNCTION OF STATE HWY 128 & CO. RD. 793, GO SOUTH AND WEST ON CO. RD. 793 APPROX. 5.25 MILES TO A POINT ON THE PROPOSED LEASE ROAD.



**BASIN SURVEYS** P.O. BOX 1786-HOBBS, NEW MEXICO

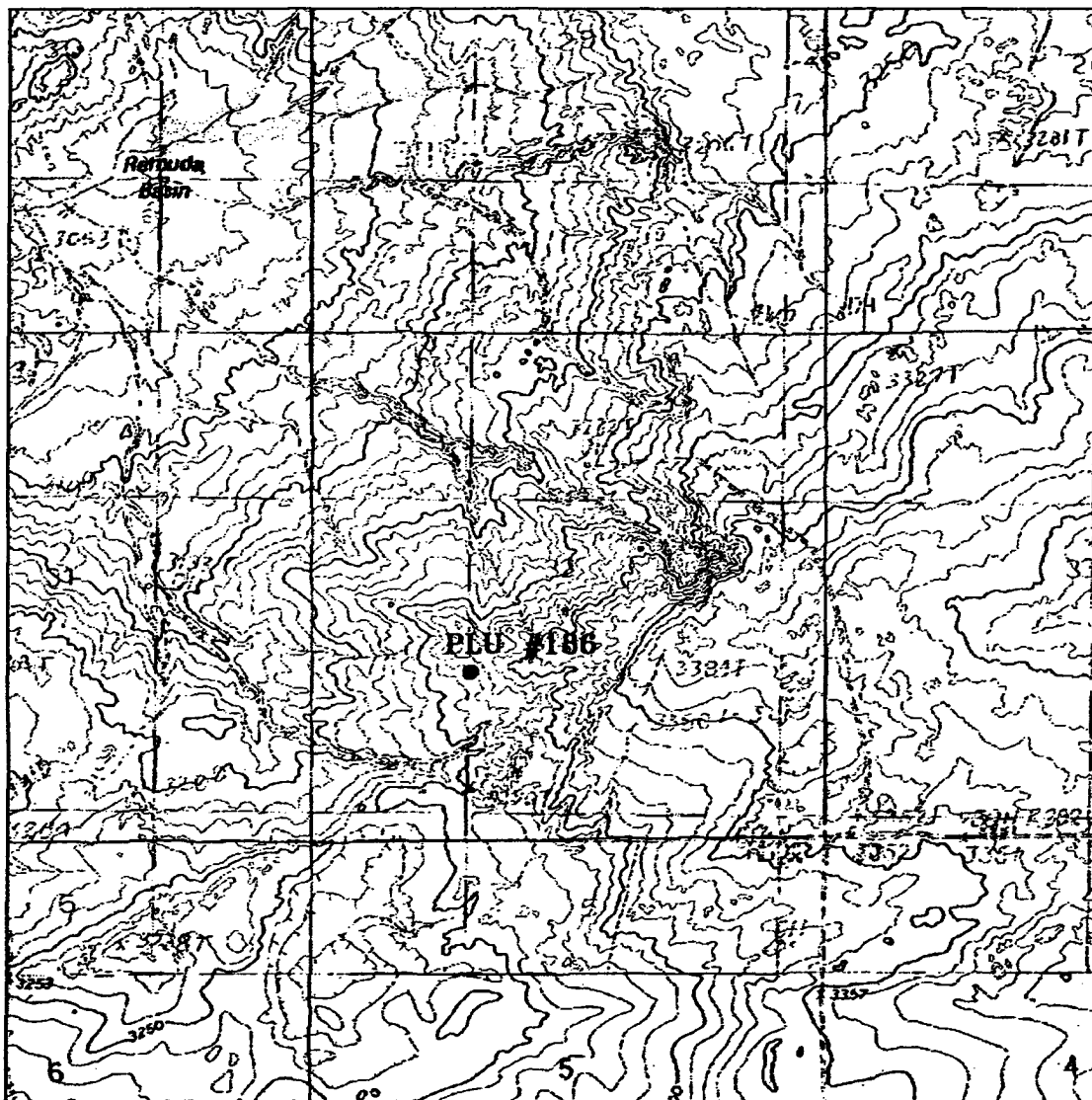
W.O. Number: 1553 | Drawn By: K. GOAD  
Date: 06-24-2001 | Disk: KJG CD#3 - 1552A.DWG

**BASS ENTERPRISES PRODUCTION CO.**

REF: Poker Lake Unit No. 186 / Well Pad Topo

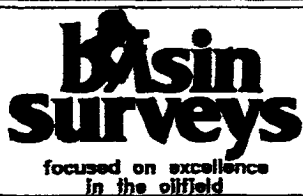
THE POKER LAKE UNIT No. 186 LOCATED 1750' FROM  
THE SOUTH LINE AND 1650' FROM THE WEST LINE OF  
SECTION 32, TOWNSHIP 23 SOUTH, RANGE 30 EAST,  
N.M.P.M., EDDY COUNTY, NEW MEXICO.

Survey Date: 06-19-2001 | Sheet 1 of 1 Sheets



# **POKER LAKE UNIT #186**

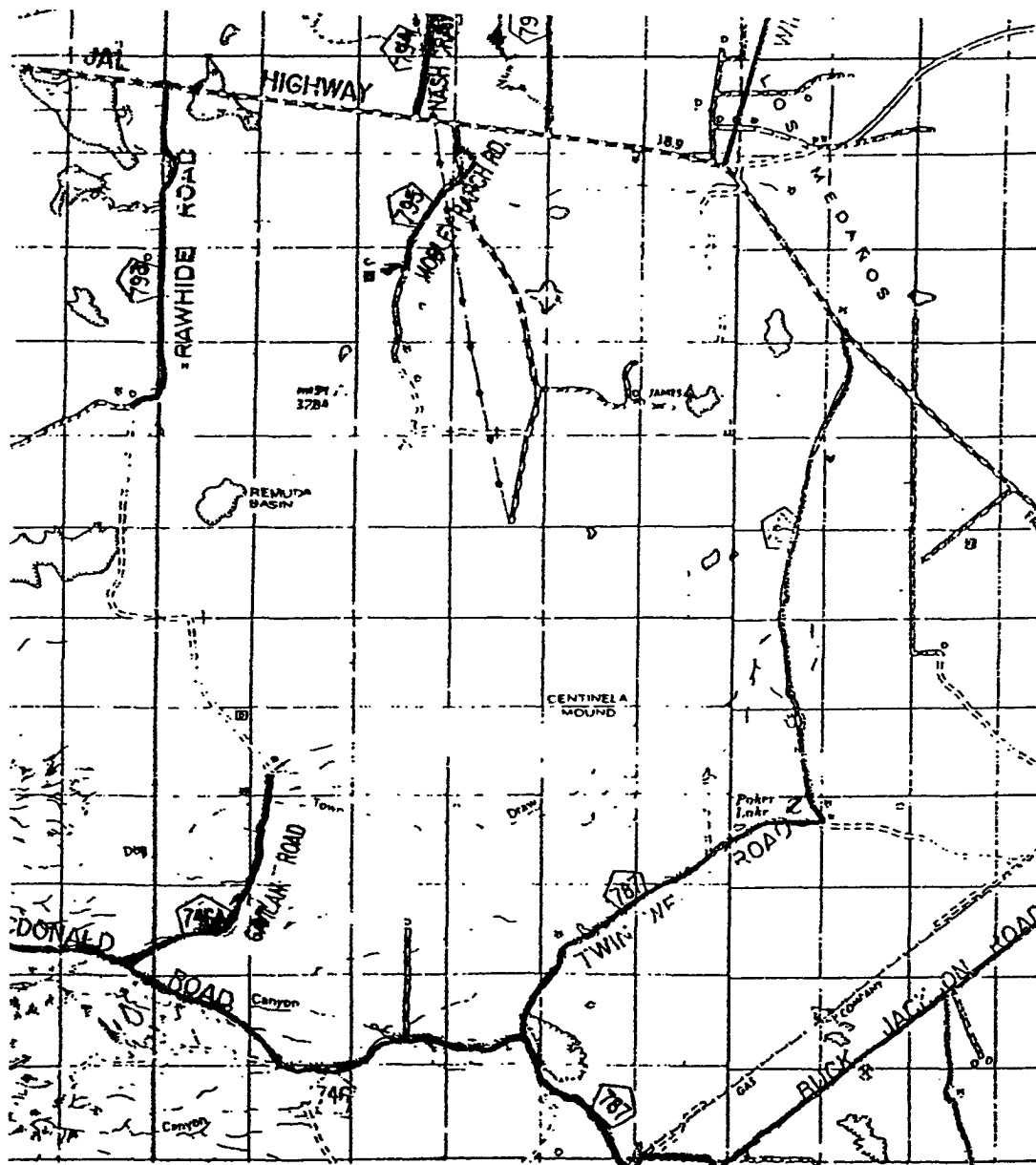
Located at 1750' FSL and 1650' FWL  
 Section 32, Township 23 South, Range 30 East,  
 N.M.P.M., Eddy County, New Mexico.



P.O. Box 1786  
 1120 N. West County Rd.  
 Hobbs, New Mexico 88241  
 (505) 393-7316 - Office  
 (505) 392-3074 - Fax  
[basinsurveys.com](http://basinsurveys.com)

W.O. Number: 1552AA - KJG CD#3  
 Survey Date: 06-19-2001  
 Scale: 1" = 2000'  
 Date: 06-24-2001

**BASS ENTERPRISES  
 PRODUCTION CO.**



**POKER LAKE UNIT #186**  
 Located at 1750' FSL and 1650' FWL  
 Section 32, Township 23 South, Range 30 East,  
 N.M.P.M., Eddy County, New Mexico.

**basin**  
**surveys**

focused on excellence  
 in the oilfield

P.O. Box 1786  
 1120 N. West County Rd.  
 Hobbs, New Mexico 88241  
 (505) 393-7316 - Office  
 (505) 392-3074 - Fax  
 basinsurveys.com

W.O. Number: 1552AA - KJG CD#3

Survey Date: 06-19-2001

Scale: 1" = 2 MILES

Date: 06-24-2001

**BASS ENTERPRISES**  
**PRODUCTION CO.**