

NEW MEXICO OIL CONSERVATION DIVISION  
SOUTHEAST NEW MEXICO PACKER LEAKAGE TEST

Revised June 9, 2003

20868  
30-015-20868

Operator Marbob Energy Corporation Lease State "00" Well No. 1  
Location Of Well: Unit C Section 17 Township T23S Range R27E County Eddy

	Name of Reservoir or Pool	Type of Prod. (Oil or Gas)	Method of Prod. (Flow Art. Lift)	Prod. Medium (Tbg. Or Cag.)	Choke Size
Upper Completion	Atoka	None	None	CSG	
Lower Completion	Morrow	Gas	Compressor	TBG	

**FLOW TEST NO. 1**

Both zones shut-in at (hour, date): 10/17/2006 11:45am

	Upper Completion	Lower Completion
Well opened at (hour, date): <u>10/18/2006 12:05pm</u>		
Indicate by (X) the zone producing.....		XXX
Pressure at beginning of test.....	16#	300#
Stabilized? (Yes or No).....	Yes	Yes
Maximum pressure during test.....	16#	300#
Minimum pressure during test.....	16#	64#
Pressure at conclusion of test.....	16#	67#
Pressure change during test (Maximum minus Minimum).....	0#	236#
Was pressure change an increase or a decrease?.....	Stable	Decrease

Well closed at (hour, date): 10/19/2006 9:30am Total Time On Production 21 hours 25 minutes

Oil Production \_\_\_\_\_ Gas Production \_\_\_\_\_

During Test: 0 bbls; Grav. \_\_\_\_\_; During Test 167.0 MCF; GOR \_\_\_\_\_

Remarks: Atoka zone is not hooked up, Zone is not produced

**FLOW TEST NO. 2**

Both zones shut-in at (hour, date): \_\_\_\_\_

	Upper Completion	Lower Completion
Well opened at (hour, date): _____		
Indicate by (X) the zone producing.....		
Pressure at beginning of test.....		
Stabilized? (Yes or No).....		
Maximum pressure during test.....		
Minimum pressure during test.....		
Pressure at conclusion of test.....		
Pressure change during test (Maximum minus Minimum).....		
Was pressure change an increase or a decrease?.....		

Well closed at (hour, date): \_\_\_\_\_ Total Time On Production \_\_\_\_\_

Oil Production \_\_\_\_\_ Gas Production \_\_\_\_\_

During Test: \_\_\_\_\_ bbls; Grav. \_\_\_\_\_; During Test \_\_\_\_\_ MCF; GOR \_\_\_\_\_

Remarks: \_\_\_\_\_

I hereby certify that the information herein contained is true and complete to the best of my knowledge.

Approved \_\_\_\_\_ 20 \_\_\_\_\_

New Mexico Oil Conservation Division

By \_\_\_\_\_

Title \_\_\_\_\_

**Gerry Guye**  
Deputy Field Inspector  
District II - Artesia

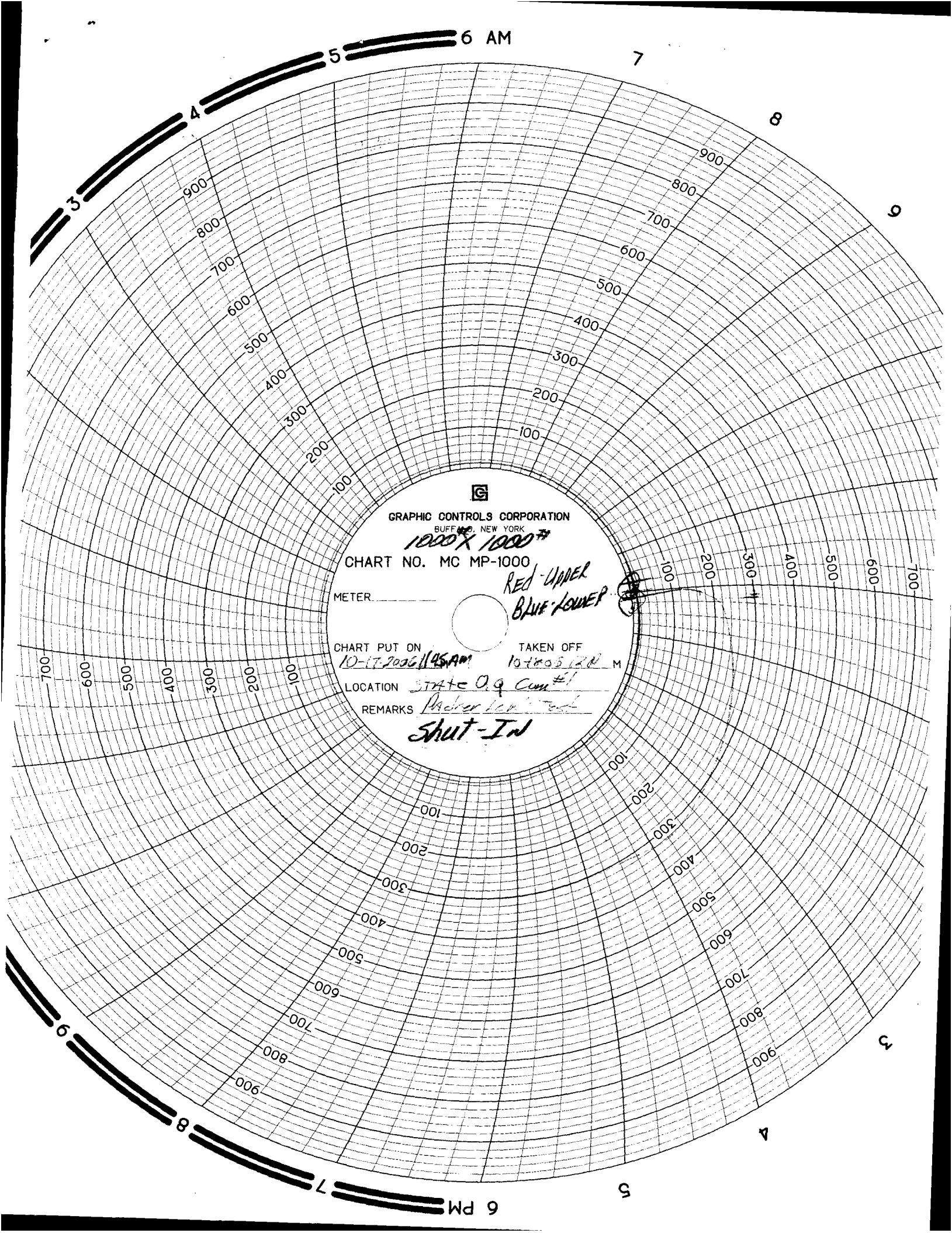
Operator Wildcat Measurement Service, Inc.

By \_\_\_\_\_

Title Don Norman/Technician

E-mail Address dnorman@wildcatms.com

Date 10/24/2006



GRAPHIC CONTROLS CORPORATION

BUFFALO, NEW YORK

*1000X 1000#*

CHART NO. MC MP-1000

METER \_\_\_\_\_

*RED-UPPER  
BLUE-LOWER*

CHART PUT ON

*10-17-2006 1145 AM*

TAKEN OFF

*10-18-06 12N M*

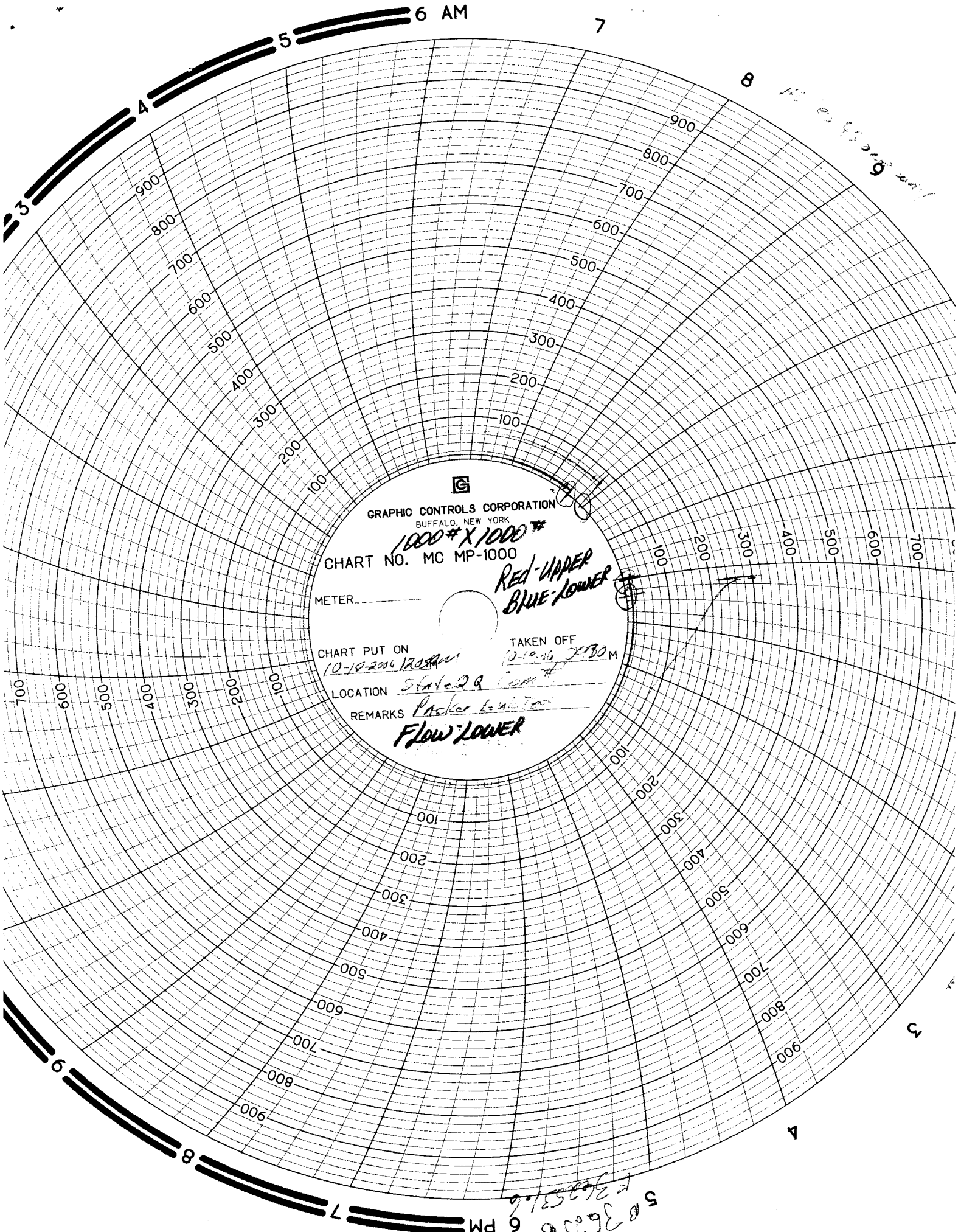
LOCATION

*STATE O.G. Comm #1*

REMARKS

*Pachter Low Level*

*Shut-In*



GRAPHIC CONTROLS CORPORATION  
BUFFALO, NEW YORK  
*1000# X 1000#*  
CHART NO. MC MP-1000  
METER \_\_\_\_\_  
CHART PUT ON *10-9-2006 1200 AM* TAKEN OFF *10-10-06 2030 M*  
LOCATION *State 2 Q Com #*  
REMARKS *Packer Location*  
*Flow Lower*

*1000# X 1000#*

*5 3633 6 PM*  
*9 3633 6 PM*