

DISTRICT I  
1825 N. French Dr., Hobbs, NM 88240

DISTRICT II  
811 South First, Artesia, NM 88210

DISTRICT III  
1000 Rio Brazos Rd., Aztec, NM 87410

DISTRICT IV  
2040 South Pacheco, Santa Fe, NM 87505

State of New Mexico  
Energy, Minerals and Natural Resources Department

Form C-102  
Revised March 17, 1999

Submit to Appropriate District Office  
State Lease - 4 Copies  
Fee Lease - 3 Copies

OIL CONSERVATION DIVISION

2040 South Pacheco  
Santa Fe, New Mexico 87504-2088

☐ AMENDED REPORT

WELL LOCATION AND ACREAGE DEDICATION PLAT

API Number 30-015-34921	Pool Code 76140	Pool Name Dublin Ranch (Morrow)
Property Code 001776	Property Name BIG EDDY UNIT	Well Number 155
OGRID No. 001801	Operator Name BEPCO, L.P.	Elevation 3153'

Surface Location

UL or lot No.	Section	Township	Range	Lot Idn	Feet from the	North/South line	Feet from the	East/West line	County
LOT 4	25	22 S	28 E		990	NORTH	810	WEST	EDDY

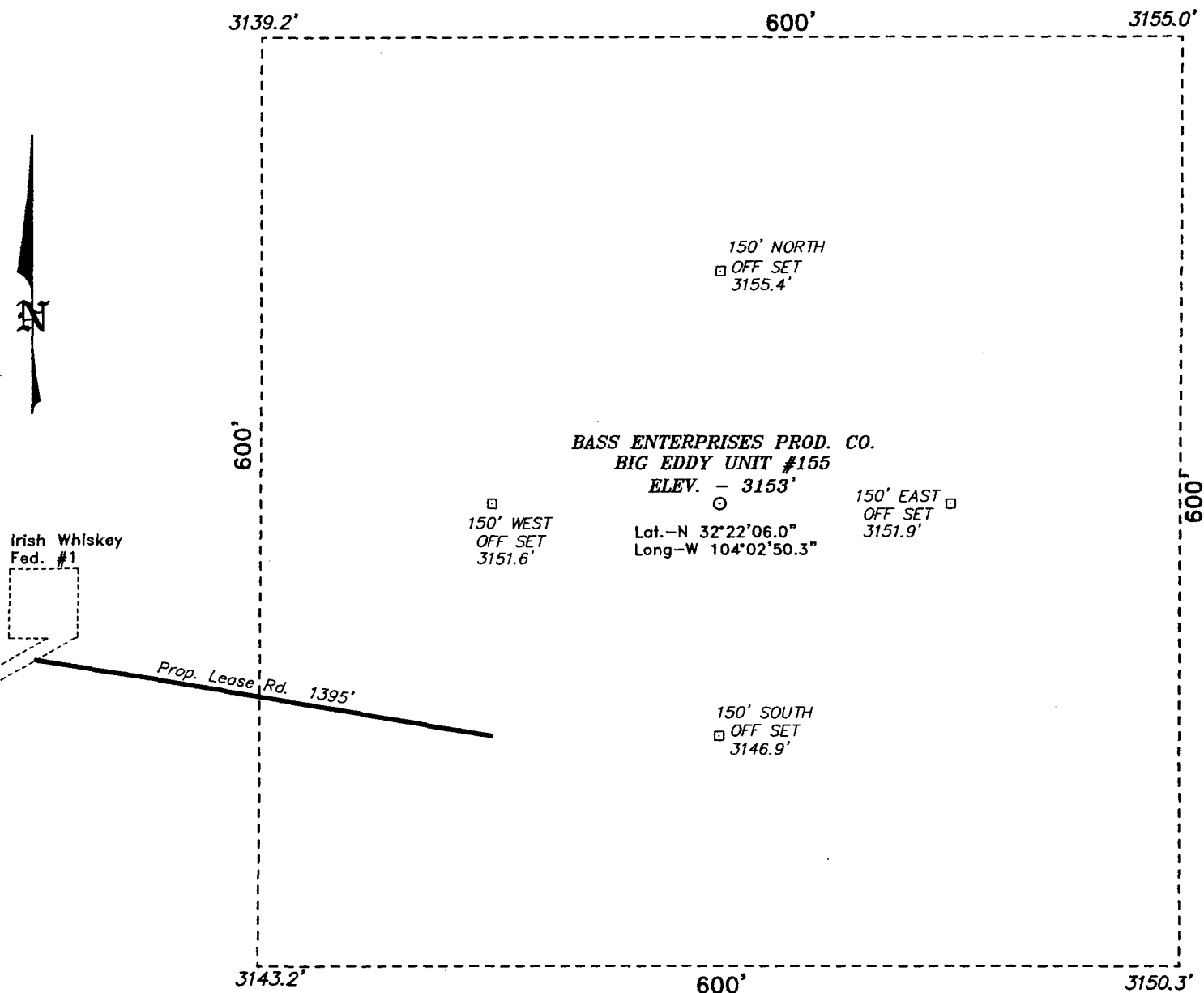
Bottom Hole Location If Different From Surface

UL or lot No.	Section	Township	Range	Lot Idn	Feet from the	North/South line	Feet from the	East/West line	County
Dedicated Acres 339.005	Joint or Infill N	Consolidation Code	Order No.						

NO ALLOWABLE WILL BE ASSIGNED TO THIS COMPLETION UNTIL ALL INTERESTS HAVE BEEN CONSOLIDATED  
OR A NON-STANDARD UNIT HAS BEEN APPROVED BY THE DIVISION

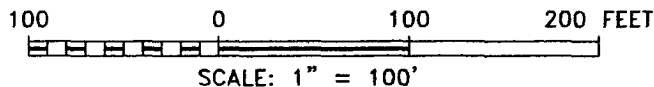
				<p><b>OPERATOR CERTIFICATION</b></p> <p>I hereby certify the the information contained herein is true and complete to the best of my knowledge and belief.</p> <p><i>William R. Dannels</i> Signature W.R. DANNELS Printed Name DIVISION DRILLING SUPT. Title 4/19/06 Date</p>	
<p><b>SURVEYOR CERTIFICATION</b></p> <p>I hereby certify that the well location shown on this plat was plotted from field notes of actual surveys made by me or under my supervision and that the same is true and correct to the best of my belief.</p> <p>FEBRUARY 27, 2006</p> <p>Date Surveyed Signature <i>[Signature]</i> Professional Surveyor NEW MEXICO W.O. No. 6272 Certificate No. Gary L. Jones 7977 BASIN SURVEYS</p>					

SECTION 25, TOWNSHIP 22 SOUTH, RANGE 28 EAST, N.M.P.M.,  
EDDY COUNTY, NEW MEXICO.



DIRECTIONS TO LOCATION:

FROM THE JUNCTION OF US HWY 62/180 AND CO. RD. 605, GO SOUTHEAST ON CO. RD. 605 FOR 8.7 MILES; THENCE EAST FOR 0.5 MILE; THENCE NORTHEAST FOR 0.8 MILE; THENCE NORTHWEST FOR 0.3 MILE; THENCE EAST FOR 0.1 MILE TO THE PROPOSED LEASE ROAD.



**BASS ENTERPRISES PRODUCTION CO.**

REF: BIG EDDY UNIT No. 155 / Well Pad Topo

THE BIG EDDY UNIT No. 155 LOCATED 990' FROM  
THE NORTH LINE AND 810' FROM THE WEST LINE OF  
SECTION 25, TOWNSHIP 22 SOUTH, RANGE 28 EAST,

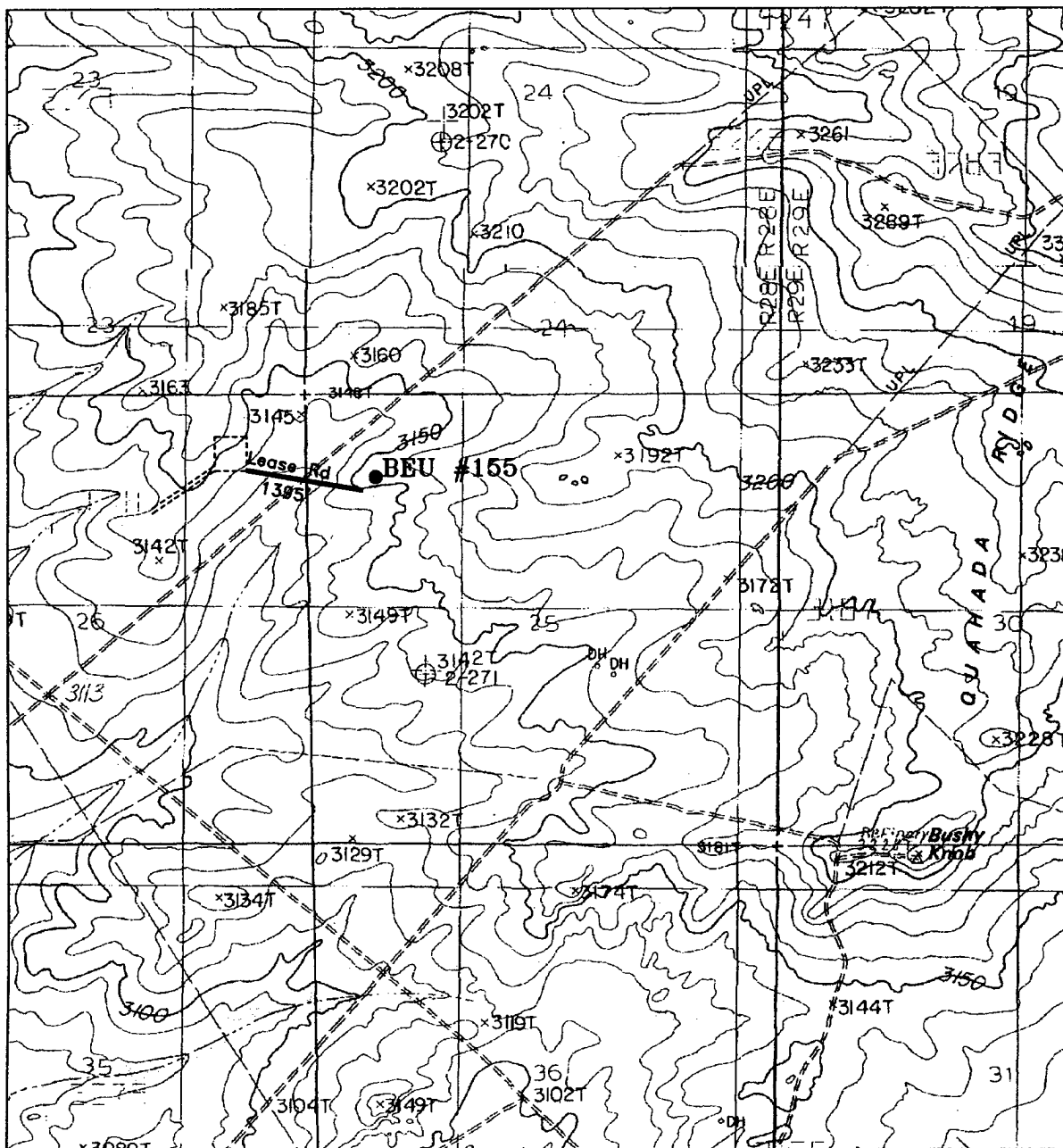
N.M.P.M., EDDY COUNTY, NEW MEXICO.

**Basin Surveys** P.O. BOX 1786-HOBBS, NEW MEXICO

W.O. Number: 6272 Drawn By: K. GOAD

Date: 02-28-2006 Disk: KJG CD#7 - 6272A.DWG

Survey Date: 02-27-2006 Sheet 1 of 1 Sheets



## BIG EDDY UNIT, #155

Located at 990' FNL and 810' FWL  
 Section 25, Township 22 South, Range 28 East,  
 N.M.P.M., Eddy County, New Mexico.

**basin**  
**surveys**

focused on excellence  
 in the oilfield

P.O. Box 1786  
 1120 N. West County Rd.  
 Hobbs, New Mexico 88241  
 (505) 393-7316 - Office  
 (505) 392-3074 - Fax  
 basinsurveys.com

W.O. Number: 6272AA - KJG #7

Survey Date: 02-27-2006

Scale: 1" = 2000'

Date: 02-28-2006

**BASS ENTERPRISES  
 PRODUCTION CO.**