

S

UNITED STATES
DEPARTMENT OF THE INTERIOR
BUREAU OF LAND MANAGEMENT

APPLICATION FOR PERMIT TO DRILL OR REENTER

OCD-ARTESIA



FORM APPROVED
OMB No. 1004-0136
Expires January 31, 2004

ATS-07-51

1a. Type of Work: ☒ DRILL ☐ REENTER

1b. Type of Well: ☐ Oil Well ☒ Gas Well ☐ Other ☐ Single Zone ☐ Multiple Zone

2. Name of Operator

Mewbourne Oil Company - 14744

3a. Address

PO Box 5270 Hobbs, NM 88240

3b. Phone No. (include area code)

505-393-5905

4. Location of Well (Report location clearly and in accordance with any State requirements. *)

At surface 1310' FNL & 660' FEL Unit A

At proposed prod. zone Same

ROSWELL CONTROLLED WATER BASIN

14. Distance in miles and direction from nearest town or post office*

Northwest from Carlsbad approx 17 miles

15. Distance from proposed*

location to nearest
property or lease line, ft.

(Also to nearest drig. unit line, if any) 660'

16. No. of Acres in lease

320

17. Spacing Unit dedicated to this well

320

18. Distance from proposed location*

to nearest well, drilling, completed,
applied for, on this lease, ft.

2000'

19. Proposed Depth

9700'

20. BLM/BIA Bond No. on file

NM1693, Nationwide

21. Elevations (Show whether DF, KDB, RT, GL, etc.)

3480' GL

22. Approximate date work will start*

ASAP

23. Estimated duration

45

24. Attachments

The following, completed in accordance with the requirements of Onshore Oil and Gas Order No. 1, shall be attached to this form:

1. Well plat certified by a registered surveyor.

2. A Drilling Plan.

3. A Surface Use Plan (if the location is on National Forest System Lands, the SUPO shall be filed with the appropriate Forest Service Office).

4. Bond to cover the operations unless covered by an existing bond on file (see Item 20 above).

5. Operator certification.

6. Such other site specific information and/or plans as may be required by the authorized officer.

25. Signature

Kristi Green

Name (Printed/Typed)

Kristi Green

Date

10/19/06

Title

Hobbs Regulatory

Approved by (Signature)

/s/ James Stovall

Name (Printed/Typed)

/s/ James Stovall

NOV 30 2006

Title

FIELD MANAGER

Office

CARLSBAD FIELD OFFICE

Application approval does not warrant or certify that the applicant holds legal or equitable title to those rights in the subject lease which would entitle the applicant to conduct operations thereon.

Conditions of approval, if any, are attached.

APPROVAL FOR 1 YEAR

Title 18 U.S.C. Section 1001 and Title 43 U.S.C. Section 1212, make it a crime for any person knowingly and willfully to make to any department or agency of the United States any false, fictitious or fraudulent statements or representations as to any matter within its jurisdiction.

*(Instructions on reverse)

**SEE ATTACHED FOR
CONDITIONS OF APPROVAL**

**If earthen pits are used in
association with the drilling of this
well, an OCD pit permit must be
obtained prior to pit construction.**

**APPROVAL SUBJECT TO
GENERAL REQUIREMENTS
AND SPECIAL STIPULATIONS
ATTACHED**

**United States Department of the Interior
Bureau of Land Management
Roswell Field Office
2909 West Second Street
Roswell, New Mexico 88201-1287**

Statement Accepting Responsibility for Operations

Operator Name: Mewbourne Oil Company
Street or Box: P.O. Box 5270
City, State: Hobbs, New Mexico
Zip Code: 88241

The undersigned accepts all applicable terms, conditions, stipulations, and restrictions concerning operations conducted of the leased land or portion thereof, as described below.

Lease Number: Lease Number #NM-99014

Legal Description of Land: Section 17, T-20S, R-25E Eddy County, New Mexico.
Location @ 1310' FNL & 660' FEL.

Formation (if applicable):

Bond Coverage: \$150,000

BLM Bond File: NM1693, Nationwide

Authorized Signature: *Micky Young for NM Young*

Name: NM (Micky) Young

Title: District Manager

Date: October 19, 2006

DISTRICT I
1825 N. French Dr., Hobbs, NM 88240

DISTRICT II
1301 W. Grand Avenue, Artesia, NM 88210

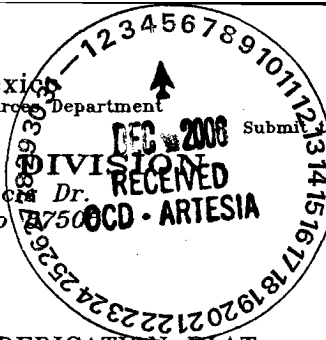
DISTRICT III
1000 Rio Brazos Rd., Aztec, NM 87410

DISTRICT IV
1220 S. St. Francis Dr., Santa Fe, NM 87505

State of New Mexico
Energy, Minerals and Natural Resources Department



CONSERVATION DIVISION
1220 South St. Francis Dr.
Santa Fe, New Mexico 87505



Form C-102
Revised October 12, 2005

Submit to Appropriate District Office
State Lease - 4 Copies
Fee Lease - 3 Copies

☐ AMENDED REPORT

WELL LOCATION AND ACREAGE DEDICATION PLAT

API Number	Pool Code 74640	Pool Name Cemetery Morrow
Property Code	Property Name PINE BOX "17" FEDERAL COM	Well Number 2
OGRID No. 14744	Operator Name MEWBOURNE OIL COMPANY	Elevation 3480'

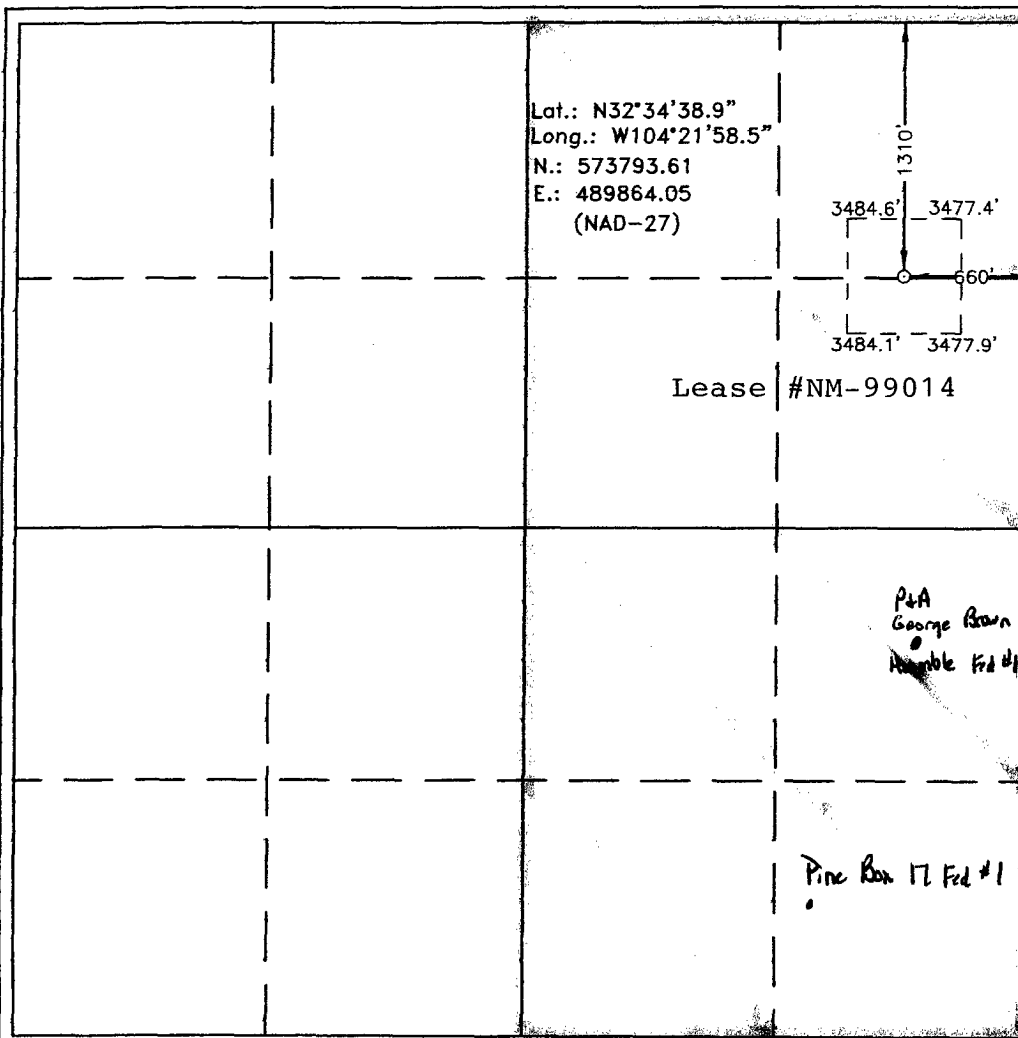
Surface Location

UL or lot No.	Section	Township	Range	Lot Idn	Feet from the	North/South line	Feet from the	East/West line	County
A	17	20 S	25 E		1310	NORTH	660	EAST	EDDY

Bottom Hole Location If Different From Surface

UL or lot No.	Section	Township	Range	Lot Idn	Feet from the	North/South line	Feet from the	East/West line	County
Dedicated Acres 320	Joint or Infill	Consolidation Code	Order No.						

NO ALLOWABLE WILL BE ASSIGNED TO THIS COMPLETION UNTIL ALL INTERESTS HAVE BEEN CONSOLIDATED
OR A NON-STANDARD UNIT HAS BEEN APPROVED BY THE DIVISION



OPERATOR CERTIFICATION	
I hereby certify that the information contained herein is true and complete to the best of my knowledge and belief, and that this organization either owns a working interest or unleased mineral interest in the land including the proposed bottom hole location pursuant to a contract with an owner of such a mineral or working interest, or to a voluntary pooling agreement or a compulsory pooling order heretofore entered by the division.	
Signature <i>Kristi Green</i>	Date 9/30/06
Printed Name Kristi Green	
SURVEYOR CERTIFICATION	
I hereby certify that the well location shown on this plat was plotted from field notes of actual surveys made by me or under my supervision, and that the same is true and correct to the best of my belief.	
Date Surveyed SEPTEMBER 11, 2006	
Signature <i>[Signature]</i>	
Professional Surveyor 7977	
Certificate No.	Jones 7977
BASIN SURVEYS	

MULTI-POINT SURFACE USE AND OPERATIONS PLAN

MEWBOURNE OIL COMPANY

Pine Box 17 Federal #2

1310' FNL & 660' FEL

Sec 17-T20S-R25E

Eddy County, New Mexico

This plan is submitted with Form 3160-3, Application for Permit to Drill, Covering the above described well. The purpose of this plan is to describe the location of the proposed well, the proposed construction activities and operations plan, the magnitude of the surface disturbance involved, and the procedures to be followed in restoring the surface so that a complete appraisal can be made of the environmental impact associated with the proposed operations.

1. Existing Roads:

- A. Exhibit #3 is a road map showing the location of the proposed well. Exhibit #3 is a topographic map showing the location of the proposed well and access road. Existing roads are highlighted in blue and proposed roads are highlighted in red.
- B. **Directions to location From Carlsbad: Go north from Carlsbad on Hwy 285 approx 15 miles. Turn left on Eddy County Road 28 (White Pine Rd). Go approx 4 miles to Junction of White Pine Rd & Picket Road (CR27). Turn right on Picket Rd (CR27) and go 0.4 miles north and road turns west. Continue 0.9 miles and turn right (north). Continue north 0.3 miles. Turn left (west) & continue west 0.1 miles to location.**

2. Proposed Access Road:

- A. Will need approx 500' of new road & improve approx 2000' of existing road.
- B. The access to the location will be limited to 16' in width and will adequately drain runoff and control erosion as presently constructed.

3. Location of Existing Wells:

There are producing wells within the immediate vicinity of this well site shown on Exhibit 4.

4. Location of Existing and/or Proposed Facilities:

- A. There are no production facilities on this lease at the present time.
- B. In the event that the well is productive, production facilities will be located on the well pad.
- C. All production vessels left on location will be painted to conform with BLM painting stipulations within 180 days of installation.

5. Location and Type of Water Supply

The well will be drilled with a combination of fresh water and brine water based mud systems. The water will be obtained from commercial suppliers in the area and/or hauled to the location by transport trucks over existing and proposed roads as indicated in Exhibit #3.

6. Source of Construction Materials

All material required for construction of the drill pad and access roads will be obtained from private, state, or federal pits. The construction contractor will be solely responsible for securing construction materials required for this operation and paying any royalties that may be required on those materials.

7. Methods of Handling Waste Disposal:

- A. Drill cuttings not retained for evaluation purposed will be disposed of in the reserve pit.
- B. Drilling fluids will be allowed to evaporate in the reserve pit prior to closure.
- C. Water produced during operations will be disposed of in the reserve pit.
- D. If any liquid hydrocarbons are produced during operations, those liquids will be stored in suitable tanks until sold.
- E. Current regulations regarding the proper disposal of human waste will be followed.
- F. All trash, junk, and other waste materials will be stored in proper containers to prevent dispersal and will be removed to an appropriate facility within one week of cessation of drilling and completion activities.

8. Ancillary Facilities

There are no ancillary facilities within the immediate vicinity of the proposed well site.

9. Well Site Layout

- A. A diagram of the drill pad is shown in Exhibit #5. Dimensions of the pad, pits, and location of major rig components are shown.
- B. The reserve pit will be lined with a high quality plastic sheeting to prevent migration of fluids.
- C. The pad dimension of 400' X 250' has been staked and flagged.
- D. An archaeological survey is in the process of being conducted on the proposed access road, location pad and pipeline.

10. Plans for Restoration of Surface

- A. Upon cessation of the proposed operations, if the well is abandoned, the location and road will be ripped and re-seeded. The reserve pit area, after allowing to dry will be leveled. The entire location will be restored to the original contour as much as reasonable possible. All trash, garbage, and pit lining will be hauled to appropriate disposal to assure the location is aesthetically pleasing as reasonable possible. All restoration work will be completed within 180 days of cessation of activities.
- B. The disturbed area will be restored by re-seeding during the proper growing season.
- C. Three sides of the reserve pit will be fenced prior to and during drilling operations. The reserve pit will be fenced on the fourth side after the drilling rig is removed to prevent the endangerment of livestock. The fence will remain in place until the pit area has been leveled and restored.

- D. Upon cessation of the proposed operations, if the well is not abandoned, the reserve pit area will be restored as per BLM/OCD guidelines. Any additional caliche required for production facilities will be obtained from a source as described in Section 6.
- E. Within 90 days of cessation of drilling and completion operations, all equipment not necessary for production operations will be removed. The location will be cleaned of all trash and junk to assure the well site is left as aesthetically pleasing as reasonably possible.

11. Surface Ownership:

The surface is owned by: Located entirely on BLM land

12. Other Information:

- A. Topography: Refer to the archaeological report for a detailed description of flora, fauna, soil characteristics, dwellings, and historical or cultural sites.
- B. The primary use of the surface at the location is for grazing of livestock.

13. Operator's Representative:

- A. Through APD approval, drilling, completion and production operations:

N.M. Young, District Manager
Mewbourne Oil Company
PO Box 5270
Hobbs, NM 88241
505-393-5905

14. Certification

I hereby certify that I, or persons under my direct supervision, have inspected the proposed drill site and access route; that I am familiar with the conditions which currently exist; that the statements made in this plan are to the best of my knowledge, true and correct; and the work associated with the operations proposed herein will be performed by Mewbourne Oil Company, its contractors and subcontractors, in accordance with this plan and the terms and conditions under which it is approved. This statement is subject to the provisions of 18 U.S.C. 1001 for the filing of a false statement.

Date: 10/19/06

Signature:

Write: given for NM Young

N.M. Young, District Manager
Mewbourne Oil Company
PO Box 5270
Hobbs, NM 88241
(505) 393-5905

Drilling Program
Mewbourne Oil Company
Pine Box 17 Federal #2
1310' FNL & 660' FEL
Sec 17-T20S-R25E
Eddy County, New Mexico

1. The estimated top of geological markers are as follows:

San Andres	900'
Glorietta	2350'
Yeso	2500'
Bonespring	4000'
Wolfcamp	6600'
Cisco	7650'
Canyon	8200'
Strawn	8400'
Atoka	9050'
Morrow	9200"
TD	9700'

2. Estimated depths of anticipated fresh water, oil, or gas:

Water	Below 200'
Hydrocarbons	All zones below Yeso

3. Pressure control equipment:

A 3000# WP Double Ram BOP will be installed after running 8 5/8" casing. Pressure tests will be conducted prior to drilling out under all casing strings. BOP controls will be installed prior to drilling under surface casing and will remain in use until completion of drilling operations. BOP's will be inspected and operated daily to insure mechanical integrity and the inspection will be recorded on the daily drilling report.

Kelly cock and a sub equipped with a full opening valve sized to fit the drill pipe and collars will be available on the rig floor in the open position when the kelly is not in use.

4. Proposed casing and cementing program:

A. Casing Program:

<u>Hole Size</u>	<u>Casing</u>	<u>Wt/Ft.</u>	<u>Grade</u>	<u>Depth</u>
12 1/4"	8 5/8"	32#	J55	0-1150'
7 7/8"	5 1/2"	17#	N80	0-9700'

Minimum casing design factors: Collapse 1.2, Burst 1.1, Tensile strength 2.0.

B. Cementing Program

- i. Surface Casing: 600 sacks Class C light cement containing 1/2#/sk cellophane flakes, 2% CaCl, 5#/sk gilsonite. 400 sks Class C cement containing 2% CaCl.
- iii. Production Casing: 600 sacks Class H cement containing fluid loss additive, friction reducer additive, compressive strength enhancer, and NaCl. Shallower productive zones may be protected by utilizing a multiple stage cementing tool in the production casing below potentially productive zones and cementing with a light cement slurry.

**Mewbourne Oil Company reserves the right to change cement designs as hole conditions may warrant.*

5. Mud Program:

<u>Interval</u>	<u>Type System</u>	<u>Weight</u>	<u>Viscosity</u>	<u>Fluid Loss</u>
0'-1150'	FW spud mud	8.6-9.4	32-34	NA
1150'-TD	Cut brine water	9.2-10	28-30	<10

(Note: Any weight above 8.6 ppg would be to hold back Wolfcamp shale, rather than abnormal bottom hole pressure in Morrow formation.)

6. Evaluation Program:

Samples:	10' samples from intermediate casing to TD
Logging:	Compensated density and dual laterlog from intermediate casing to TD
Coring:	As needed for evaluation
Drill Stem Tests:	As needed for evaluation

7. Downhole Conditions

Zones of abnormal pressure:	None anticipated
Zones of lost circulation:	Anticipated in surface and intermediate holes
Maximum bottom hole temperature:	180 degree F
Maximum bottom hole pressure:	9.0 lbs/gal gradient or less

8. Anticipated Starting Date:

Mewbourne Oil Company intends to drill this well as soon as possible after receiving approval with approximately 45 days involved in drilling operations and an additional 10 days involved in completion operations on the project.

Hydrogen Sulfide Drilling Operations Plan

Mewbourne Oil Company

Pine Box 17 Federal #2

1310' FNL & 660' FEL

Sec 17-T20S-R25E

Eddy County, New Mexico

1. General Requirements

Rule 118 does not apply to this well. MOC has researched this area and no high concentrations of H₂S were found. MOC will have on location and working all H₂S safety equipment before the San Andres formation for purposes of safety and insurance requirements.

2. Hydrogen Sulfide Training

All personnel, whether regularly assigned, contracted, or employed on an unscheduled basis, will have received training from a qualified instructor in the following areas prior to entering the drilling pad area of the well:

1. The hazards and characteristics of hydrogen sulfide gas.
2. The proper use of personal protective equipment and life support systems.
3. The proper use of hydrogen sulfide detectors, alarms, warning systems, briefing areas, evacuation procedures.
4. The proper techniques for first aid and rescue operations.

Additionally, supervisory personnel will be trained in the following areas:

- 1 The effects of hydrogen sulfide on metal components. If high tensile tubular systems are utilized, supervisory personnel will be trained in their special maintenance requirements.
- 2 Corrective action and shut in procedures, blowout prevention, and well control procedures while drilling a well.
- 3 The contents of the Hydrogen Sulfide Drilling Operations Plan.

There will be an initial training session prior to encountering a known hydrogen sulfide source. The initial training session shall include a review of the site specific Hydrogen Sulfide Drilling Operations Plan.

3. Hydrogen Sulfide Safety Equipment and Systems

All hydrogen sulfide safety equipment and systems will be installed, tested, and operational prior to drilling below the intermediate casing.

1. Well Control Equipment

- A. Flare line with automatic igniter or continuous ignition source.
- B. Choke manifold with minimum of one adjustable choke.
- C. Blowout preventers equipped with blind rams and pipe rams to accommodate all pipe sizes with properly sized closing unit
- D. Auxiliary equipment including rotating head and annular type blowout preventer.

2. Protective Equipment for Essential Personnel

Thirty minute self contained work unit located at briefing area as indicated on wellsite diagram.

3. Hydrogen Sulfide Protection and Monitoring Equipment

Two portable hydrogen sulfide monitors positioned on location for optimum coverage and detection. The units shall have audible sirens to notify personnel when hydrogen sulfide levels exceed 20 ppm.

4. Visual Warning Systems

A. Wind direction indicators as indicated on the wellsite diagram.

B. Caution signs shall be posted on roads providing access to location. Signs shall be painted a high visibility color with lettering of sufficient size to be readable at reasonable distances from potentially contaminated areas.

4. Mud Program

The mud program has been designed to minimize the amount of hydrogen sulfide entrained in the mud system. Proper mud weight, safe drilling practices, and the use of hydrogen sulfide scavengers will minimize hazards while drilling the well.

5. Metallurgy

All tubular systems, wellheads, blowout preventers, drilling spools, kill lines, choke manifolds, and valves shall be suitable for service in a hydrogen sulfide environment when chemically treated.

6. Communications

State & County Officials phone numbers are posted on rig floor and supervisors trailer. Communications in company vehicles and toolpushers are either two way radios or cellular phones.

7. Well Testing

Drill stem testing is not an anticipated requirement for evaluation of this well. A drill stem test is required, it will be conducted with a minimum number of personnel in the immediate vicinity. The test will be conducted during daylight hours only.

Notes Regarding Blowout Preventer

Mewbourne Oil Company

Pine Box 17 Federal #2

1310' FNL & 660' FEL

Sec 17-T20S-R25E

Eddy County, New Mexico

- I. Drilling nipple (bell nipple) to be constructed so that it can be removed without the use of a welder through the opening of the rotary table, with minimum internal diameter equal to blowout preventer bore.
- II. Blowout preventer and all fittings must be in good condition with a minimum 3000 psi working pressure.
- III. Safety valve must be available on the rig floor at all times with proper connections to install in the drill string. Valve must be full bore with minimum 3000 psi working pressure.
- IV. Equipment through which bit must pass shall be at least as large as internal diameter of the casing.
- V. A kelly cock shall be installed on the kelly at all times.

Blowout preventer closing equipment to include and accumulator of at least 40 gallon capacity, two independent sources of pressure on closing unit, and meet all other API specifications.

Mewbourne Oil Company
BOP Scematic for
8 3/4" or 7 7/8" Hole

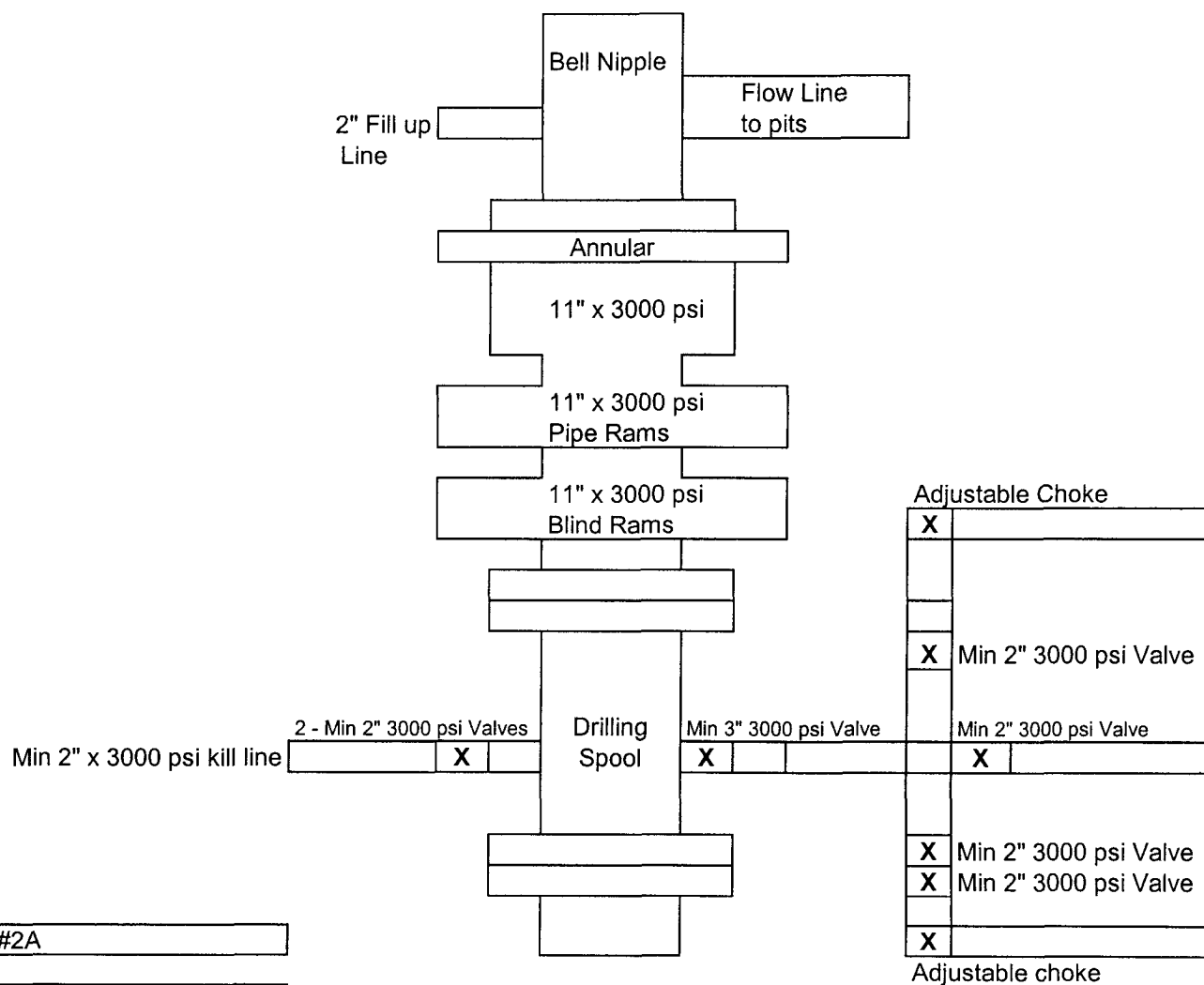
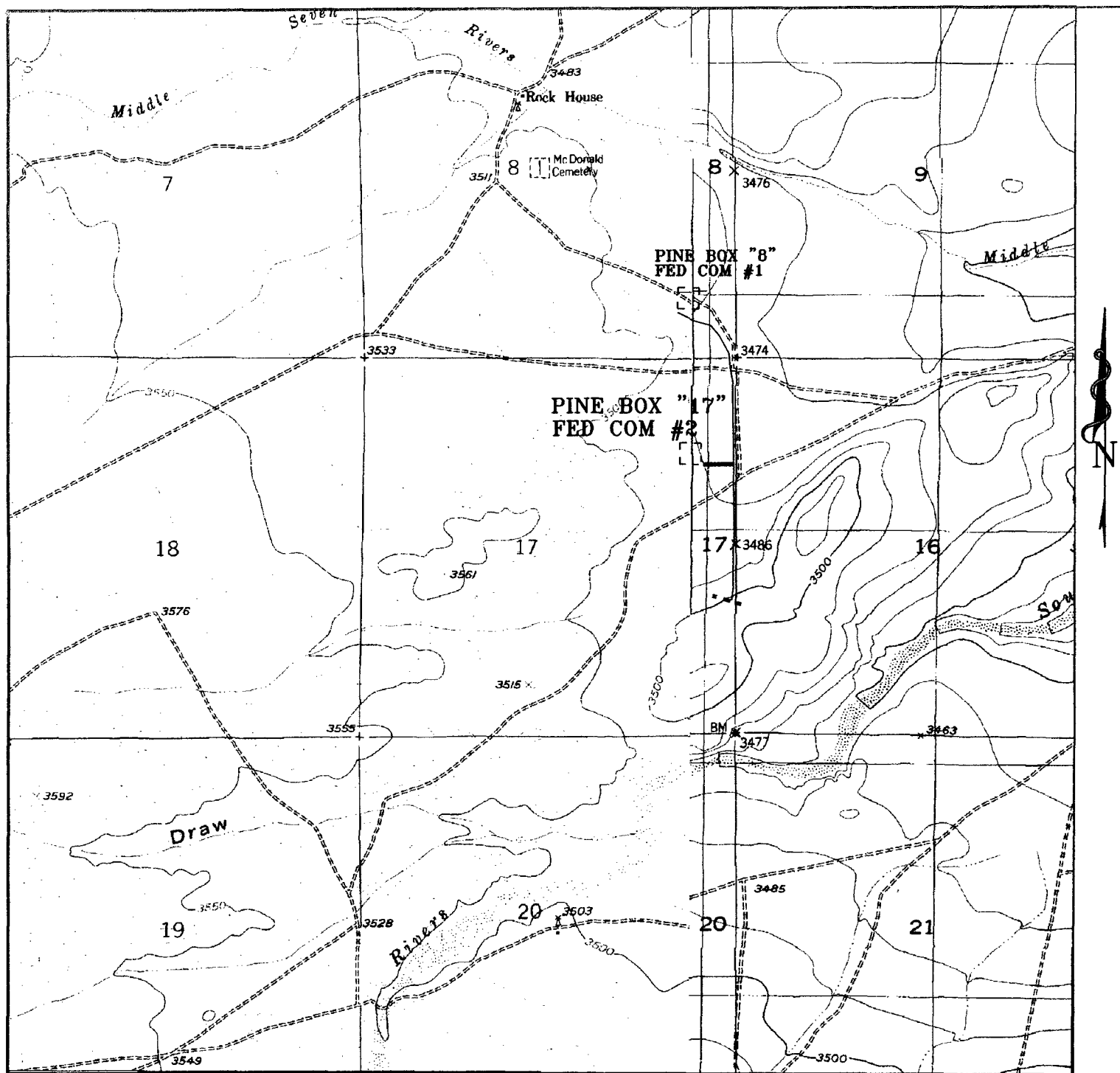


Exhibit #2A

Pine Box 17 Federal #2
Sec 17-T20S-R25E
1310' FNL & 660' FEL
Eddy County
New Mexico



PINE BOX "17" FEDERAL COM #2
 Located 1310' FNL and 660' FEL
 Section 17, Township 20 South, Range 25 East,
 N.M.P.M., EDDY County, New Mexico.

Exhibit 3

basin
surveys
 focused on excellence
 in the oilfield

P.O. Box 1786
 1120 N. West County Rd.
 Hobbs, New Mexico 88241
 (505) 393-7316 - Office
 (505) 392-3074 - Fax
 basinsurveys.com

W.O. Number: 7151T JMS

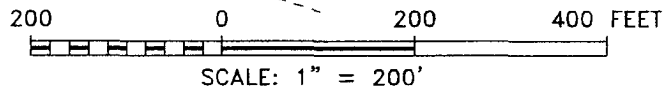
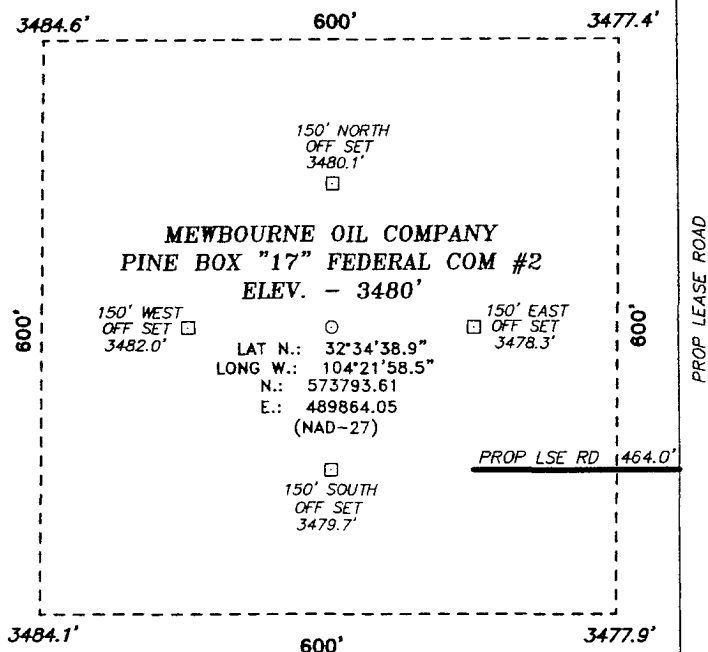
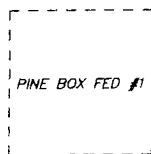
Survey Date: 09-11-2006

Scale: 1" = 2000'

Date: 09-19-2006

MEWBOURNE
OIL CO.

SECTION 17, TOWNSHIP 20 SOUTH, RANGE 25 EAST, N.M.P.M.,
EDDY COUNTY, NEW MEXICO.



DIRECTIONS TO LOCATION:

FROM THE JUNCTION OF U.S. HWY. 285 AND CO. RD. 28 (WHITE PINE), PROCEED WEST BY SOUTHWEST FOR APPROX. 3.5 MILES TO CO. RD. 27 (PICKET), ON CO. RD. 27 PROCEED NORTH 0.5 MILE, THENCE WEST 0.7 MILE TO PROPOSED LEASE ROAD.

BASIN SURVEYS P.O. BOX 1786-HOBBS, NEW MEXICO

W.O. Number: 7151 Drawn By: J. SMALL

Date: 09-19-2006 Disk: JMS 7151W

MEWBOURNE OIL COMPANY

REF: PINEBOX "17" FEDERAL COM #2 / WELL PAD TOPO

THE PINE BOX FEDERAL COM No. 2 LOCATED 1310'
FROM THE NORTH LINE AND 660' FROM THE EAST LINE OF
SECTION 17, TOWNSHIP 20 SOUTH, RANGE 25 EAST,
N.M.P.M., EDDY COUNTY, NEW MEXICO.

Survey Date: 09-11-2006 Sheet 1 of 1 Sheets

Exhibit 3A

Exhibit #4
Status of Wells in Immediate Vicinity
Mewbourne Oil Company
Pine Box 17 Federal #2
1310' FNL & 660' FEL
Sec 17-T20S-R25E
Eddy County, New Mexico

Section 17-T20S-R25E

Operator: George Brown Inc
Well Name: Humber Federal #1
Unit letter: I
Status: P&A
Field: Cemetery Morrow

Operator: Pogo Producing Company
Well Name: Seven Rivers 17 #1
Unit letter: N
Status: Producing
Field: Cemetery Morrow

Mewbourne Oil Company

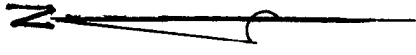
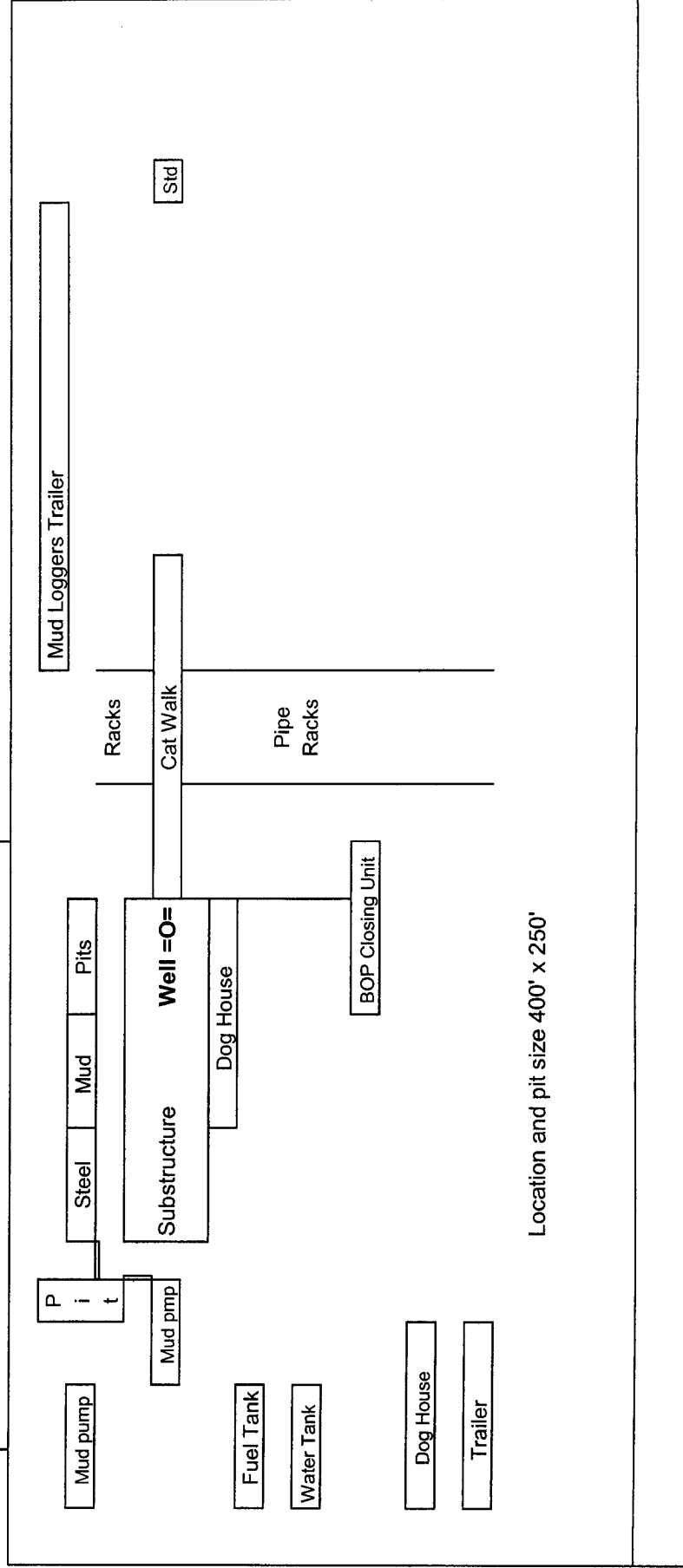
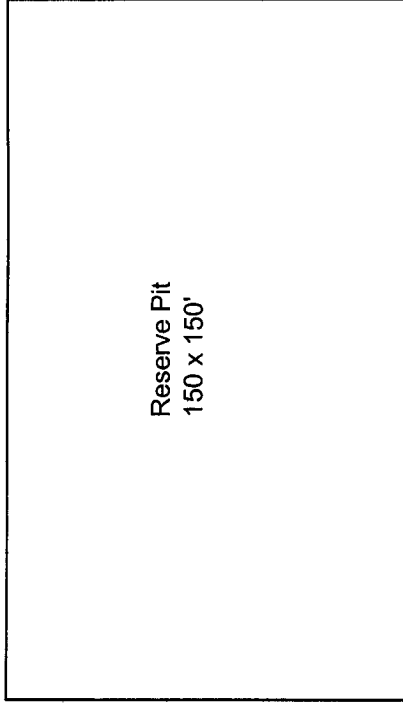


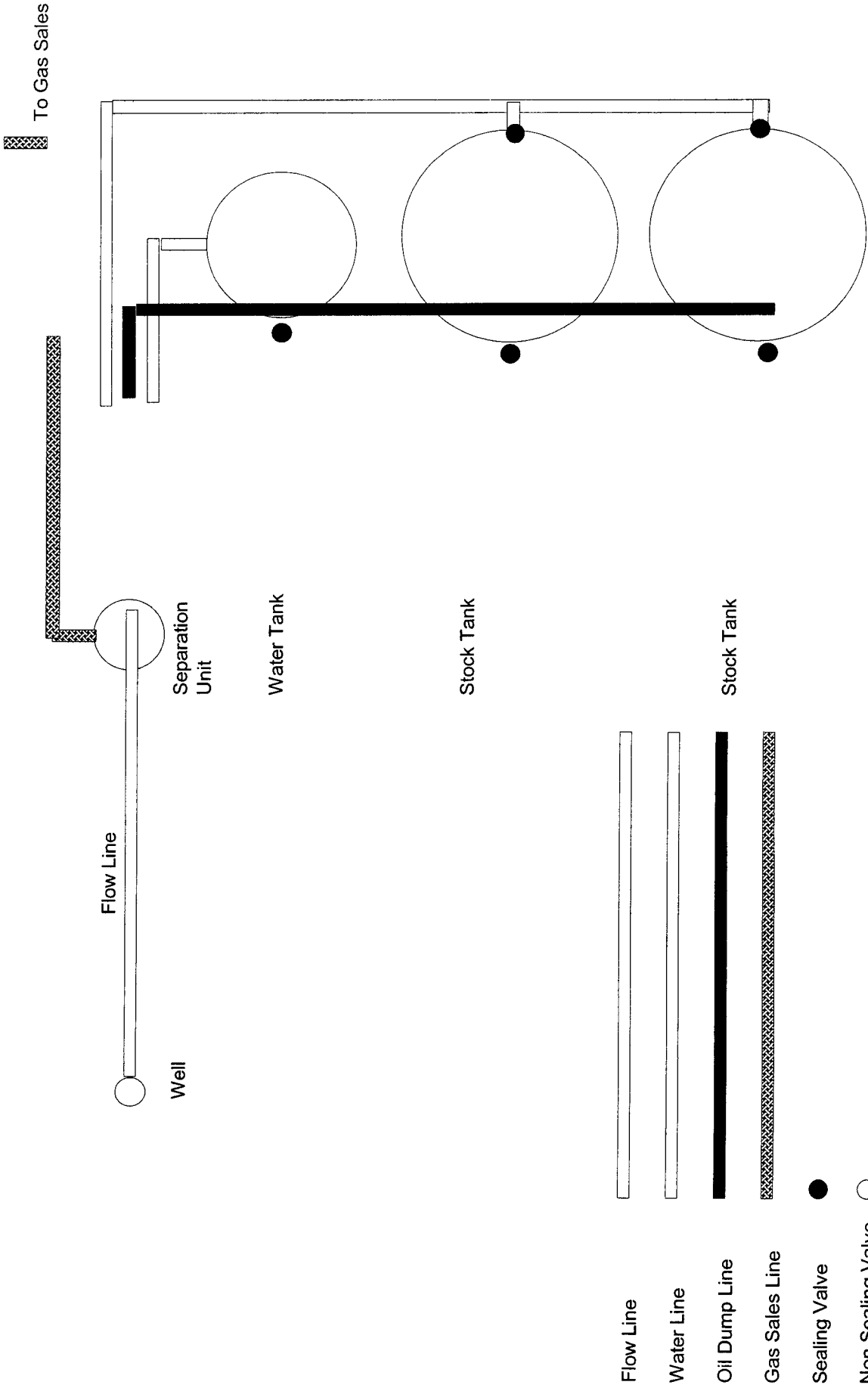
Exhibit # 5

Well Name	Pine Box 17 Federal #2
Footages	Sec 17-T20S-R25E
STR	1310' FNL & 660' FEL
County	Eddy County
State	New Mexico



Lead

Proposed Production Facilities Schematic



Mewbourne Oil Company
Exhibit # 6
Proposed Production Facilities Schematic
Pine Box 17 Federal #2
Sec 17-T20S-R25E
1310' FNL & 660' FEL
Eddy County

SPECIAL DRILLING STIPULATIONS

THE FOLLOWING DATA IS REQUIRED ON THE WELL SIGN

Operator's Name: Mewbourne Oil Company Well Name & #: Pine Box 17 Fed. #2
Location 1310 F N L & 660 F E L; Sec. 17, T. 20 S., R. 25 E.
Lease #: NM-99014 County: Eddy State: New Mexico

The Special stipulations check marked below are applicable to the above described well and approval of this application to drill is conditioned upon compliance with such stipulations in addition to the General Requirements. The permittee should be familiar with the General Requirements, a copy of which is available from a Bureau of Land Management office. EACH PERMITTEE HAS THE RIGHT OF ADMINISTRATIVE APPEAL TO THESE STIPULATIONS PURSUANT TO TITLE 43 CFR 3165.3 AND 3165.4.

This permit is valid for a period of one year from the date of approval or until lease expiration or termination whichever is shorter.

I. SPECIAL ENVIRONMENT REQUIREMENTS

- () Lesser Prairie Chicken (stips attached) () Flood plain (stips attached)
() San Simon Swale (stips attached) (x) Other **See attached stipulations for Cave/Karst and Aplomado Falcon Habitat.**

II. ON LEASE - SURFACE REQUIREMENTS PRIOR TO DRILLING

(x) The BLM will monitor construction of this drill site. Notify the (x) Carlsbad Field Office at (505) 234-5972 () Hobbs Office (505) 393-3612, at least 3 working days prior to commencing construction.

(x) Roads and the drill pad for this well must be surfaced with 6 inches of compacted caliche upon completion of well and it is determined to be a producer.

() All topsoil and vegetation encountered during the construction of the drill site area will be stockpiled and made available for resurfacing of the disturbed area after completion of the drilling operation. Topsoil on the subject location is approximately _____ inches in depth. Approximately _____ cubic yards of topsoil material will be stockpiled for reclamation.

(x) Other. **V-Door North (Reserve pits to the west).**

III. WELL COMPLETION REQUIREMENTS

() A Communitization Agreement covering the acreage dedicated to the well must be filed for approval with the BLM. The effective date of the agreement must be prior to any sales.

(x) Surface Restoration: If the well is a producer, the reserve pit(s) will be backfilled when dry, and cut-and-fill slopes will be reduced to a slope of 3:1 or less. All areas of the pad not necessary for production must be re-contoured to resemble the original contours of the surrounding terrain, and topsoil must be re-distributed and re-seeded with a drill equipped with a depth indicator (set at depth of 1/2 inch) with the following seed mixture, in pounds of Pure Live Seed (PLS), per acre. If broadcasting, the seeding rate must be doubled.

() A. Seed Mixture 1 (Loamy Sites)

Side Oats Grama (*Bouteloua curtipendula*) 5.0
Sand Dropseed (*Sporobolus cryptandrus*) 1.0
Plains lovegrass (*Eragrostis intermedia*) 0.5

() B. Seed Mixture 2 (Sandy Sites)

Sand Dropseed (*Sporobolus cryptandrus*) 1.0
Sand Lovegrass (*Eragrostis trichodes*) 1.0
Plains Bristlegrass (*Setaria magrostachya*) 2.0

() C. Seed Mixture 3 (Shallow Sites)

Side oats Grama (*Bouteloua curtipendula*) 5.0
Green Spangletop (*Leptochloa dubia*) 2.0
Plains Bristlegrass (*Setaria magrostachya*) 1.0

() D. Seed Mixture 4 (Gypsum Sites)

Alkali Sacaton (*Sporobolus airoides*) 1.0
Four-Wing Saltbush (*Atriplex canescens*) 5.0

(x) OTHER SEE ATTACHED SEED MIXTURE

Seeding should be done either late in the fall (September 15 - November 15, before freeze up, or early as possible the following spring to take advantage of available ground moisture.

() Other

RESERVE PIT CONSTRUCTION STANDARDS

The reserve pit shall be constructed entirely in cut material and lined with 6-mil plastic.

Mineral material extracted from within the boundary of the APD during construction of the well pad and reserve pits and be used for the construction of this well pad and its immediate access road only, as long as that portion of the access road it is use on remains on-lease. Removal of any additional material from this location for construction or improvement of other well pads and other access or lease roads must first be purchased from BLM.

Reclamation: Reclamation of this type of deep pit will consist of pushing the pit walls into the pit when sufficiently dry to support track equipment. The pit liner is NOT TO BE RUPTURED to facilitate drying; a ten month period after completion of the well is allowed for drying of the pit contents.

The pit area must be contoured to the natural terrain with all contaminated drilling mud buried with at least 3 feet of clean soil. The reclaimed area will then be seeded as specified in this permit.

CULTURAL

Whether or not an archaeological survey has been completed and notwithstanding that operations are being conducted as approved, the lessee/operator/grantee shall notify the BLM immediately if previously unidentified cultural resources are observed during surface disturbing operations. From the time of the observation, the lessee/operator/grantee shall avoid operations that will result in disturbance to these cultural resources until directed to process by BLM.

TRASH PIT STIPS

All trash, junk, and other waste material shall be contained in trash cages or bins to prevent scattering and will be removed and deposited in an approved sanitary landfill. Burial on site is not permitted.

Stipulations for Drilling in Aplomado Falcon Habitat

The following well pad construction and reclamation measures will be implemented to provide for minimal long-term disturbance:

No Yuccas over 5 feet in height will be damaged by vehicular use or any other activity associated with this project.

Remove all caliche from well pads and roads that are plugged and abandoned. Reclamation will consist of disking, mulching, seeding with a drill (See seed mixture below), and application of water to encourage seed germination.

Well pad size will not exceed 300 ft. x 390 ft. (unless multiple wells are drilled from the same well pad). All unused portions of the well pad associated with producing wells will be reclaimed using the seed mixture below:

Buffalograss (<i>Buchloe dactyloides</i>)	4 lbs/acre
Blue grama (<i>Bouteloua gracilis</i>)	1 lbs/acre
Cane bluestem (<i>Bothriochloa barbinodis</i>)	5 lbs/acre
Sideoats grama (<i>Bouteloua curtipendula</i>)	5 lbs/acre
Plains bristlegrass (<i>Setaria macrostachya</i>)	6 lbs/acre

Reserve pits for drilling and disposal are not allowed unless the pit can be effectively netted to the satisfaction of the BLM. Steel tank circulation system must be used if the reserve pit is not netted.

All active raptor nests will be avoided by a minimum of 400 meters by all activities or curtail activities until fledging is complete.

All inactive raptor nests will be avoided by a minimum of 200 meters by all activities.

All roads associated with well development will not exceed 30 ft in width

Conditions of Approval

Cave and Karst

Lease #: NM-99014

Mewbourne Oil Company

Pine Box 17 Fed. #2

Cave/Karst Surface Mitigation

The following stipulations will be applied to minimize impacts during construction, drilling and production.

Berming:

Any tank batteries will be constructed and bermed large enough to contain any spills that may occur.

Bermed areas will be lined with rip-stop padding to prevent tears or punctures in liners and lined with a permanent 20 mil plastic liner.

Cave/Karst Subsurface Mitigation

The following stipulations will be applied to protect cave/karst and ground water concerns:

Rotary Drilling with Fresh Water:

Rotary drilling techniques in cave or karst areas will include the use of fresh water as a circulating medium in zones where caves or karst features are expected. See geologist report for depth.

Casing:

All casing will meet or exceed National Association of Corrosion Engineers specifications pertaining to the geology of the location and be run to American Petroleum Institute and BLM standards.

Cementing:

All casing strings will be cemented to the surface.

Abandonment Cementing:

Upon well abandonment the well bore will be cemented completely from 100 feet below the bottom of the cave bearing zone to the surface.

Record Keeping:

The Operator will track customary drilling activities, including the rate of penetration, pump pressure, weight on bit, bit drops, percent of mud returns, and presence of absence of cuttings returning to the surface. As part of customary record keeping, each detectable void or sudden increase in the rate of penetration not attributable to a change in the formation type should be documented and evaluated as it is encountered.

CONDITIONS OF APPROVAL - DRILLING

Well Name & No. **2-Pine Box 17 Federal**
Operator's Name: **Mewbourne Oil Company**
Location: **1310FNL, 660FEL, Section 17, T-20-S, R-25-E**
Lease: **NM 99014**

I. DRILLING OPERATIONS REQUIREMENTS:

1. The Bureau of Land Management (BLM) is to be notified at the Carlsbad Field Office, 620 East Greene St., Carlsbad, NM 88220, (505) 234-5972 or (505) 361-2822 - for wells in Eddy County in sufficient time for a representative to witness:

A. Spudding

B. Cementing casing: 8-5/8 inch 5-1/2 inch

C. BOP tests

2. **H2S is always a possible hazard. The only report in the Township is in Section 5 where a measurement of 2000 ppm in a gas stream was noted from the Dagger Draw Upper Penn pool.**

3 Unless the production casing has been run and cemented or the well has been properly plugged, the drilling rig shall not be removed from over the hole without prior approval.

4. Submit a Sundry Notice (Form 3160-5, one original and five copies) for each casing string, describing the casing and cementing operations. Include pertinent information such as; spud date, hole size, casing (size, weight, grade and thread type), cement (type, quantity and top), water zones and problems or hazards encountered. The Sundry shall be submitted within 15 days of completion of each casing string. The reports may be combined into the same Sundry if they fall within the same 15 day time frame.

5. The API No. assigned to the well by NMOCD shall be included on the subsequent report of setting the first casing string.

6. A Communitization Agreement covering the acreage dedicated to this well must be filed for approval with the BLM. The effective date of the agreement shall be prior to any sales.

7. Gamma-Ray/Neutron logs shall be run from the base of the Salado Formation to the surface; cable speed not to exceed 30 feet per minute.

II. CASING:

1. The 8-5/8 inch surface casing shall be set at **1150 feet** below usable water and cement circulated to the surface. If cement does not circulate to the surface the appropriate BLM office shall be notified and a temperature survey or cement bond log shall be run to verify the top of the cement. Remedial cementing shall be completed prior to drilling out that string.

Possible lost circulation in the San Andres, Wolfcamp, and Strawn formations.

Pennsylvanian age rocks may be over pressured.

2. The minimum required fill of cement behind the 5-1/2 inch production casing is **cement shall circulate to surface.**

III. PRESSURE CONTROL:

1. All BOP systems and related equipment shall comply with well control requirements as described in Onshore Oil and Gas Order No. 2. The BOP and related equipment shall be installed and operational before drilling below the 8-5/8 inch casing shoe and shall be tested as described in Onshore Order No. 2. Any equipment failing to test satisfactorily shall be repaired or replaced.
2. Minimum working pressure of the blowout preventer and related equipment (BOPE) required for drilling below the 8-5/8 inch casing shall be 3M psi.
3. The appropriate BLM office shall be notified in sufficient time for a representative to witness the tests.
 - The tests shall be done by an independent service company.
 - The results of the test shall be reported to the appropriate BLM office.
 - Testing fluid must be water or an appropriate clear liquid suitable for sub-freezing temperatures. Use of drilling mud for testing is not permitted since it can mask small leaks.
 - Testing must be done in a safe workman-like manner. Hard line connections shall be required.
 - BOPE must be tested prior to drilling into the Wolfcamp Formation by an independent service company.

IV. DRILLING MUD:

Mud system monitoring equipment, with derrick floor indicators and visual and audio alarms, shall be operating before drilling into the Wolfcamp Formation, and shall be used until production casing is run and cemented. Monitoring equipment shall consist of the following:

1. Recording pit level indicator to indicate volume gains and losses.
2. Mud measuring device for accurately determining the mud volumes necessary to fill the hole during trips.
3. Flow-sensor on the flow line to warn of abnormal mud returns from the well.

Engineer on-call phone: 505-706-2779

WWI 103006

BLM Lease #: NM-99014
Company Reference: Mewbourne Oil
Well # & Name: Pine Box 17 Fed. #2

STANDARD STIPULATIONS FOR PERMANENT RESOURCE ROADS
CARLSBAD FIELD OFFICE

A copy of the APD and attachments, including stipulations, survey plat and/or map, will be on location during construction. BLM personnel may request to you a copy of your permit during construction to ensure compliance with all stipulations.

The holder/grantee/permittee shall hereafter be identified as the holder in these stipulations. The Authorized Officer is the person who approves the Application for Permit to Drill (APD) and/or Right-of-Way (ROW).

GENERAL REQUIREMENTS

A. The holder shall indemnify the United States against any liability for damage to life or property arising from the occupancy or use of public lands under this grant.

B. The holder shall comply with all applicable Federal laws and regulations existing or hereafter enacted or promulgated. In any event, the holder shall comply with the Toxic Substances Control Act of 1976, as amended (15 U.S.C. 2601, *et. seq.*) with regard to any toxic substances that are used, generated by or stored on the right-of-way or on facilities authorized by this grant. (See 40 CFR, Part 702-799 and especially, provisions on polychlorinated biphenyls, 40 CFR 761.1-761.193.) Additionally, any release of toxic substances (leaks, spills, etc.) in excess of the reportable quantity established by 40 CFR, Part 117 shall be reported as required by the Comprehensive Environmental Response, Compensation and Liability Act, Section 102b. A copy of any report required or requested by any Federal agency or State government as a result of a reportable release or spill of any toxic substances shall be furnished to the Authorized Officer concurrent with the filing of the reports to the involved Federal agency or State government.

C. The holder agrees to indemnify the United States against any liability arising from the release of any hazardous substance or hazardous waste (as these terms are defined in the Comprehensive Environmental Response, Compensation and Liability Act of 1980, 42 U.S.C. 9601, *et. seq.* or the Resource Conservation and Recovery Act, 42 U.S.C. 6901, *et. seq.*) on the right-of-way (unless the release or threatened release is wholly unrelated to the right-of-way holder's activity on the right-of-way). This agreement applies without regard to whether a release is caused by the holder, its agent, or unrelated third parties.

D. If, during any phase of the construction, operation, maintenance, or termination of the road, any oil or other pollutant should be discharged, impacting Federal lands, the control and total removal, disposal, and cleaning up of such oil or other pollutant, wherever found, shall be the responsibility of the holder, regardless of fault. Upon failure of the holder to control, dispose of, or clean up such discharge on or affecting Federal lands, or to repair all

damages to Federal lands resulting there from the Authorized Officer may take such measures as deemed necessary to control and cleanup the discharge and restore the area, including, where appropriate, the aquatic environment and fish and wildlife habitats, at the full expense of the holder. Such action by the Authorized Officer shall not relieve the holder of any liability or responsibility.

E. The holder shall minimize disturbance to existing fences and other improvements on public domain surface. The holder is required to promptly repair improvements to at least their former state. Functional use of these improvements will be maintained at all times.

The holder will make a documented good-faith effort to contact the owner of any improvements prior to disturbing them. When necessary to pass through a fence line, the fence shall be braced on both sides of the passageway prior to cutting of the fence.

F. The Holder shall ensure that the entire right-of-way, including the driving surface, ditching and drainage control structures, road verges and any construction sites or zones, will be kept free of the following plant species: Malta starthistle, African rue, Scotch thistle and salt cedar. The Holder agrees to comply with the following stipulations:

1. ROAD WIDTH AND GRADE

The road will have a driving surface of 14 feet (all roads shall have a minimum driving surface of 12 feet, unless local conditions dictate a different width). The maximum grade is 10 percent unless the box below is checked. Maximum width of surface disturbance from construction will be 30 feet.

☐ Those segments of road where grade is in excess of 10% for more than 300 feet shall be designed by a professional engineer.

2. CROWNING AND DITCHING

Crowning with materials on site and ditching on one side of the road on the uphill side will be required. The road cross-section will conform to the cross section diagrams in Figure 1. If conditions dictate, ditching may be required for both sides of the road; if local conditions permit, a flat-bladed road may be considered (if these conditions exist, check the appropriate box below). The crown shall have a grade of approximately 2% (i.e., 1" crown on a 12' wide road).

☒ Ditching will be required on both sides of the roadway as shown on the attached map or as staked in the field.

☐ Flat-blading is authorized on segment(s) delineated on the attached map.

3. DRAINAGE

Drainage control shall be ensured over the entire road through the use of borrow ditches, out-sloping, in-sloping, natural rolling topography, lead-off (turnout) ditches, culverts, and/or drainage dips.

A. All lead-off ditches shall be graded to drain water with a 1 percent minimum to 3 percent maximum ditch slope. The spacing interval for lead-off ditches shall be determined according to the following table, but may be amended depending upon existing soil types and centerline road slope (in %):

SPACING INTERVAL FOR TURNOUT DITCHES

Percent slope	Spacing interval
0% - 4%	400' - 150'
4% - 6%	250' - 125'
6% - 8%	200' - 100'
8% - 10%	150' - 75'

A typical lead-off ditch has a minimum depth of 1 foot below and a berm 6 inches above natural ground level. The berm will be on the down-slope side of the lead-off ditch. The ditch end will tie into vegetation whenever possible.

For this road the spacing interval for lead-off ditches shall be at

☒ 400 foot intervals.

☐ _____ foot intervals.

☐ locations staked in the field as per spacing intervals above.

☐ locations delineated on the attached map.

B. Culvert pipes shall be used for cross drains where drainage dips or low water crossings are not feasible. The minimum culvert diameter must be 18 inches. Any culvert pipe installed shall be of sufficient diameter to pass the anticipated flow of water. Culvert location and required diameter are shown on the attached map (Further details can be obtained from the Roswell District Office or the appropriate Resource Area Office).

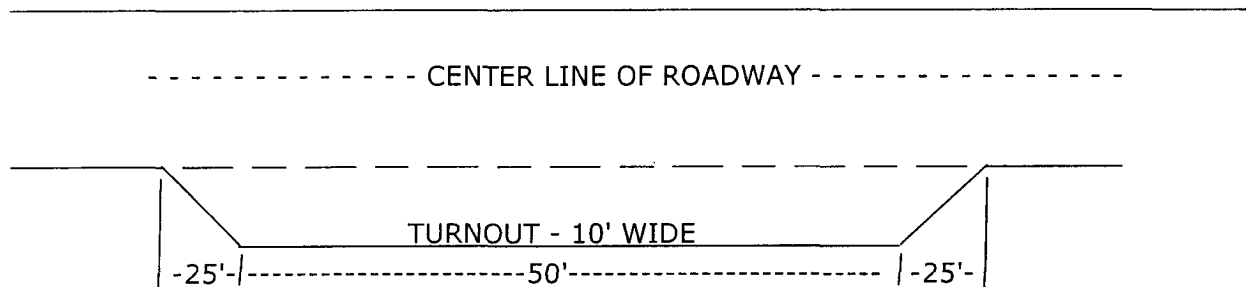
C. On road slopes exceeding 2%, drainage dips shall drain water into an adjacent lead-off ditch. Drainage dip location and spacing shall be determined by the formula:

$$\text{spacing interval} = \frac{400'}{\text{road slope in \%}} + 100'$$

Example: 4% slope: spacing interval = $\frac{400}{4} + 100 = 200$ feet

4. TURNOUTS

Unless otherwise approved by the Authorized Officer, vehicle turnouts will be required. Turnouts will be located at 2000-foot intervals, or the turnouts will be intervisible, whichever is less. Turnouts will conform to the following diagram:



STANDARD TURNOUT - PLAN VIEW

5. SURFACING

Surfacing of the road or those portions identified on the attached map may, at the direction of the Authorized Officer, be required, if necessary, to maintain traffic within the right-of-way with caliche, gravel, or other surfacing material which shall be approved by the Authorized Officer. When surfacing is required, surfacing materials will be compacted to a minimum thickness of six inches with caliche material. The width of surfacing shall be no less than the driving surface. Prior to using any mineral materials from an existing or proposed Federal source, authorization must be obtained from the Authorized Officer.

A sales contract for the removal of mineral materials (caliche, sand, gravel, fill dirt, etc.) from an authorized pit, site, or on location must be obtained from the BLM prior to using any such mineral material from public lands. Contact the BLM solid minerals staff for the various options to purchase mineral material.

6. CATTLEGUARDS

Where used, all cattleguard grids and foundation designs and construction shall meet the American Association of State Highway and Transportation Officials (AASHTO) Load Rating H-20, although AASHTO U-80 rated grids shall be required where heavy loads (exceeding H-20 loading), are anticipated (See BLM standard drawings for cattleguards). Cattleguard grid length shall not be less than 8 feet and width of not less than 14 feet. A wire gate (16-foot minimum width) will be provided on one side of the cattleguard unless requested otherwise by the surface user.

7. MAINTENANCE

The holder shall maintain the road in a safe, usable condition. A maintenance program shall include, but not be limited to blading, ditching, culvert installation, culvert cleaning, drainage installation, cattleguard maintenance, and surfacing.

8. PUBLIC ACCESS

Public access along this road will not be restricted by the holder without specific written approval being granted by the Authorized Officer. Gates or cattleguards on public lands will not be locked or closed to public use unless closure is specifically determined to be necessary and is authorized in writing by the Authorized Officer.

9. CULTURAL RESOURCES

Any cultural and/or paleontological resource (historic or prehistoric site or object) discovered by the holder, or any person working on the holder's behalf, on public or Federal land shall be immediately reported to the authorized officer. The holder shall suspend all operations in the immediate area of such discovery until written authorization to proceed is issued by the authorized officer. An evaluation of the discovery will be made by the authorized officer to determine appropriate actions to prevent the loss of significant cultural or scientific values. The holder will be responsible for the cost of evaluation and any decision as to the proper mitigation measures will be made by the authorized officer after consulting with the holder.

10. SPECIAL STIPULATIONS: