

UNITED STATES  
DEPARTMENT OF THE INTERIOR  
BUREAU OF LAND MANAGEMENT

OCD-ARTESIA

SUBMIT IN TRIPLICATE\*

Instructions on  
reverse side)

Form approved.

Budget Bureau No. 1004-0136

Expires: December 31, 1991

## APPLICATION FOR PERMIT TO DRILL OR DEEPEN

## 1a. TYPE OF WORK

DRILL ☒DEEPEN ☐

## b. TYPE OF WELL

OIL  
WELL ☒Gas  
Well ☐

OTHER

SINGLE  
ZONEMULTIPLE  
ZONE ☐

## 2. NAME OF OPERATOR

COG Operating LLC

229137

## 3. ADDRESS AND TELEPHONE NO.

550 W. Texas, Suite 1300 Midland, TX 79701

(432) 685-4372

## 4. LOCATION OF WELL (Report location clearly and in accordance with any state requirement.\*)

At surface

At proposed prod. zone

1980 FNL & 2630 FEL  
ROSWELL CONTROLLED WATER BASIN

## 14. DISTANCE IN MILES AND DIRECTION FROM NEAREST TOWN OR POST OFFICE\*

7 miles west of Loco Hills, NM

15. DISTANCE FROM PROPOSED\*  
LOCATION TO NEAREST  
PROPERTY OR LEASE LINE, FT.

10

(Also to nearest drlg. unit line, if any)

18. DISTANCE FROM PROPOSED LOCATION\*  
TO NEAREST WELL, DRILLING, COMPLETED  
OR APPLIED FOR, ON THIS LEASE, FT.

500

## 16. NO. OF ACRES IN LEASE

320

## 19. PROPOSED DEPTH

3600

17. NO OF ACRES IN LEASE  
TO THIS WELL

40

## 20. ROTARY OR CABLE TOOLS

Rotary

## 21. ELEVATIONS (Show whether DF, RT, GR, etc.)

3535' GR

## 22. APPROX. DATE WORK WILL START\*

11/20/06

## 23. PROPOSED CASING AND CEMENTING PROGRAM

SIZE OF HOLE	GRADE, SIZE OF CASING	WEIGHT PER FOOT	SETTING DEPTH	QUANTITY OF CEMENT
17 1/2	H-40, 13 3/8	48	250	Circ
12 1/4	J-55, 8 5/8	24	850	Circ
7 7/8	J-55, 5 1/2	17	3600	Suff to Circ

COG proposes to drill to a depth sufficient to test the Grayburg and San Andres formation for oil. If productive, 5 1/2" casing will be cemented. If non-productive, the well will be plugged and abandoned in a manner consistent with federal regulation. Specific programs as per Onshore Oil and Gas Order #1 are outlined in the following attachments:

1. Surveys

Exhibit #1- Well Location Plat

Exhibit #2- Vicinity Map

Exhibit #3- Location Verification Map

4. Certification5. Hydrogen Sulfide Drilling Operation Plan

Exhibit #7- H2S Warning Sign

Exhibit #8- H2S Safety Equipment

2. Drilling Program3. Surface Use & Operating Plan

Exhibit #4- One Mile Radius Map

Exhibit #5- Production Facilities Layout

Exhibit #6- Location Layout

6. Blowout Preventers

Exhibit #9- BOPE Schematic

Exhibit #10- Blowout Preventer

Exhibit #11- Choke Manifold

SEE ATTACHED FOR RESPONSIBILITY STATEMENT

CONDITIONS OF APPROVAL

APPROVAL SUBJECT TO  
GENERAL REQUIREMENTS  
AND SPECIAL STIPULATIONS  
ATTACHED

IN ABOVE SPACE DESCRIBE PROPOSED PROGRAM: If proposal is to deepen, give data on present productive zone and proposed new productive zone. If proposal is to drill or deepen directionally, give pertinent data on subsurface locations and measured and true vertical depths. Give blowout preventer program, if any.

24. SIGNED Jerry W. Sherrill TITLE Production ClerkDATE 10/24/06

(This space for Federal or State office use)

PERMIT NO. \_\_\_\_\_

APPROVAL DATE \_\_\_\_\_

If earthen pits are used in association with the drilling of this well, an OCD pit permit must be obtained prior to pit construction.

APPROVED BY

/s/ James A. Amos

ACTING FIELD MANAGER

DATE

DEC 22 2006

\*See Instructions On Reverse Side

Title 18 U.S.C. Section 1001, makes it a crime for any person knowingly and willfully to make to any department or agency of the United States any false, fictitious or fraudulent statements or representations as to any matter within its jurisdiction.

APPROVAL FOR 1 YEAR

DISTRICT I  
1625 N. FRENCH DR., HOBBS, NM 88240

DISTRICT II  
1301 W. GRAND AVENUE, ARTESIA, NM 88210

DISTRICT III  
1000 Rio Brazos Rd., Aztec, NM 87410

DISTRICT IV  
1220 S. ST. FRANCIS DR., SANTA FE, NM 87505

State of New Mexico  
Energy, Minerals and Natural Resources Department

OIL CONSERVATION DIVISION  
1220 SOUTH ST. FRANCIS DR.  
Santa Fe, New Mexico 87505

Form C-102  
Revised October 12, 2005  
Submit to Appropriate District Office  
State Lease - 4 Copies  
Fee Lease - 3 Copies

WELL LOCATION AND ACREAGE DEDICATION PLAT

☐ AMENDED REPORT

API Number	Pool Code 28509	Pool Name Grayburg Jackson SR Q G SA
Property Code 302557	Property Name RJ UNIT	Well Number 152
OGRID No. 229137	Operator Name COG OPERATING, LLC	Elevation 3535'

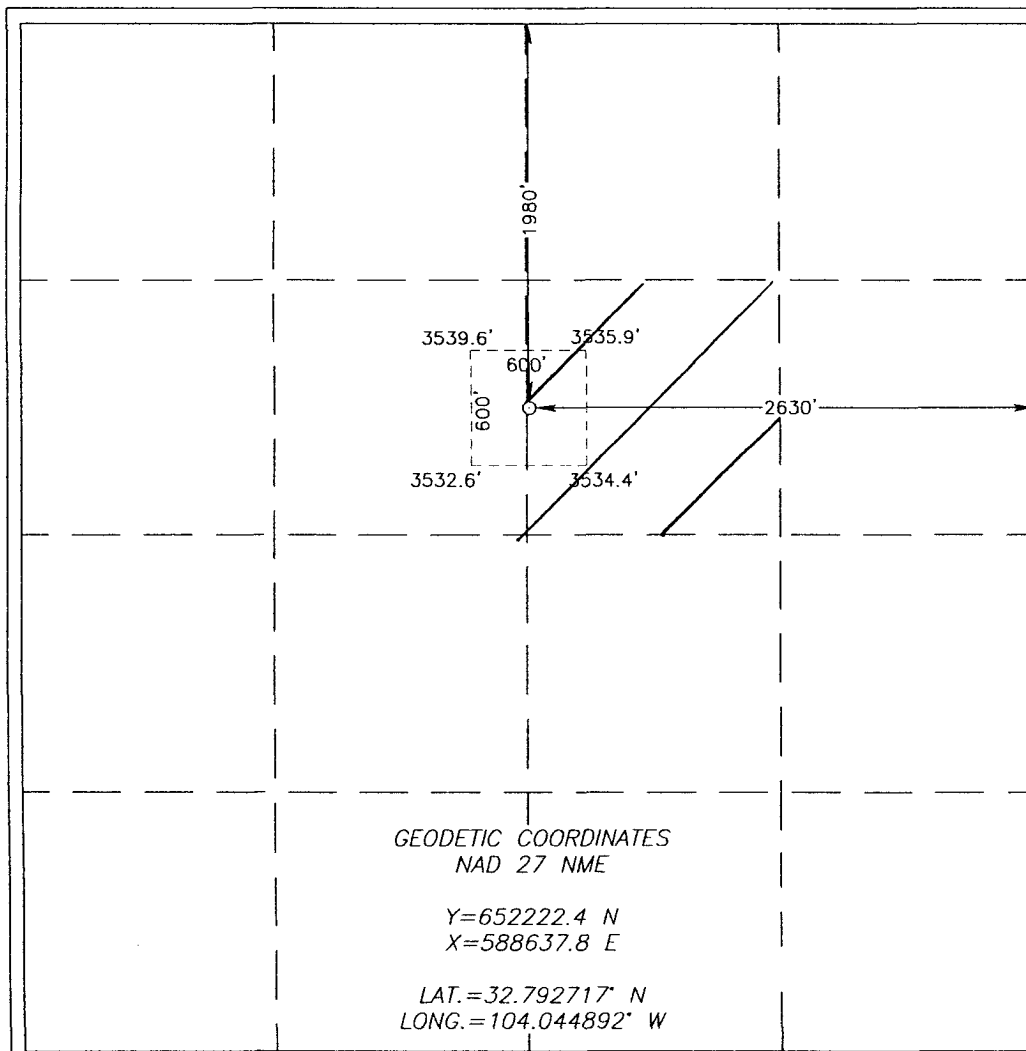
Surface Location

UL or lot No.	Section	Township	Range	Lot Idn	Feet from the	North/South line	Feet from the	East/West line	County
G	35	17-S	29-E		1980	NORTH	2630	EAST	EDDY

Bottom Hole Location If Different From Surface

UL or lot No.	Section	Township	Range	Lot Idn	Feet from the	North/South line	Feet from the	East/West line	County
Dedicated Acres 40	Joint or Infill	Consolidation Code	Order No.						

NO ALLOWABLE WILL BE ASSIGNED TO THIS COMPLETION UNTIL ALL INTERESTS HAVE BEEN CONSOLIDATED  
OR A NON-STANDARD UNIT HAS BEEN APPROVED BY THE DIVISION

 <p>GEODETIC COORDINATES NAD 27 NME Y=652222.4 N X=588637.8 E LAT.=32.792717° N LONG.=104.044892° W</p>	<p><b>OPERATOR CERTIFICATION</b></p> <p>I hereby certify that the information herein is true and complete to the best of my knowledge and belief, and that this organization either owns a working interest or unleased mineral interest in the land including the proposed bottom hole location or has a right to drill this well at this location pursuant to a contract with an owner of such mineral or working interest, or to a voluntary pooling agreement or a compulsory pooling order heretofore entered by the division.</p> <p><i>Jerry W. Sherrell</i> 10/24/06 Signature Date Jerry W. Sherrell Printed Name</p> <p><b>SURVEYOR CERTIFICATION</b></p> <p>I hereby certify that the well location shown on this plat was plotted from field notes of actual surveys made by me or under my supervision, and that the same is true and correct to the best of my belief.</p> <p>SEPTEMBER 21, 2006 Date Surveyed Signature &amp; Seal of Professional Surveyor RONALD J. EIDSON JR. 06.11.1428 Certificate No. 12641 RONALD J. EIDSON 3239</p>
---	--

3539.6'

600'

3535.9'

150' NORTH  
OFFSET  
3536.6'

2"-STL. F/L

600'

150' WEST  
OFFSET  
3535.5'

RJ UNIT #152

3"-STL. F/L

150' EAST  
OFFSET  
3534.8'

ELEV. 3535.2'

LAT. = 32.792717° N

LONG. = 104.044892° W

EXISTING ROAD

2"-POLY F/L

600'

150' SOUTH  
OFFSET  
3536.6'

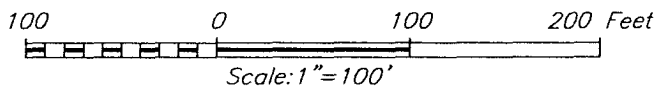
3532.6'

600'

3534.4'

North

FROM THE INTERSECTION OF U.S. HWY. #82 AND CO.  
RD. #219 (STANDARD RD.), GO SOUTHEAST/SOUTH  
ON CO. RD. #219 APPROX. 1.7 MILES. TURN LEFT  
AND GO EAST APPROX. 0.8 MILES. TURN RIGHT AND  
GO SOUTH APPROX. 0.2 MILES. TURN RIGHT AND GO  
WEST APPROX. 0.1 MILES. THIS LOCATION IS APPROX.  
10 FEET NORTH.



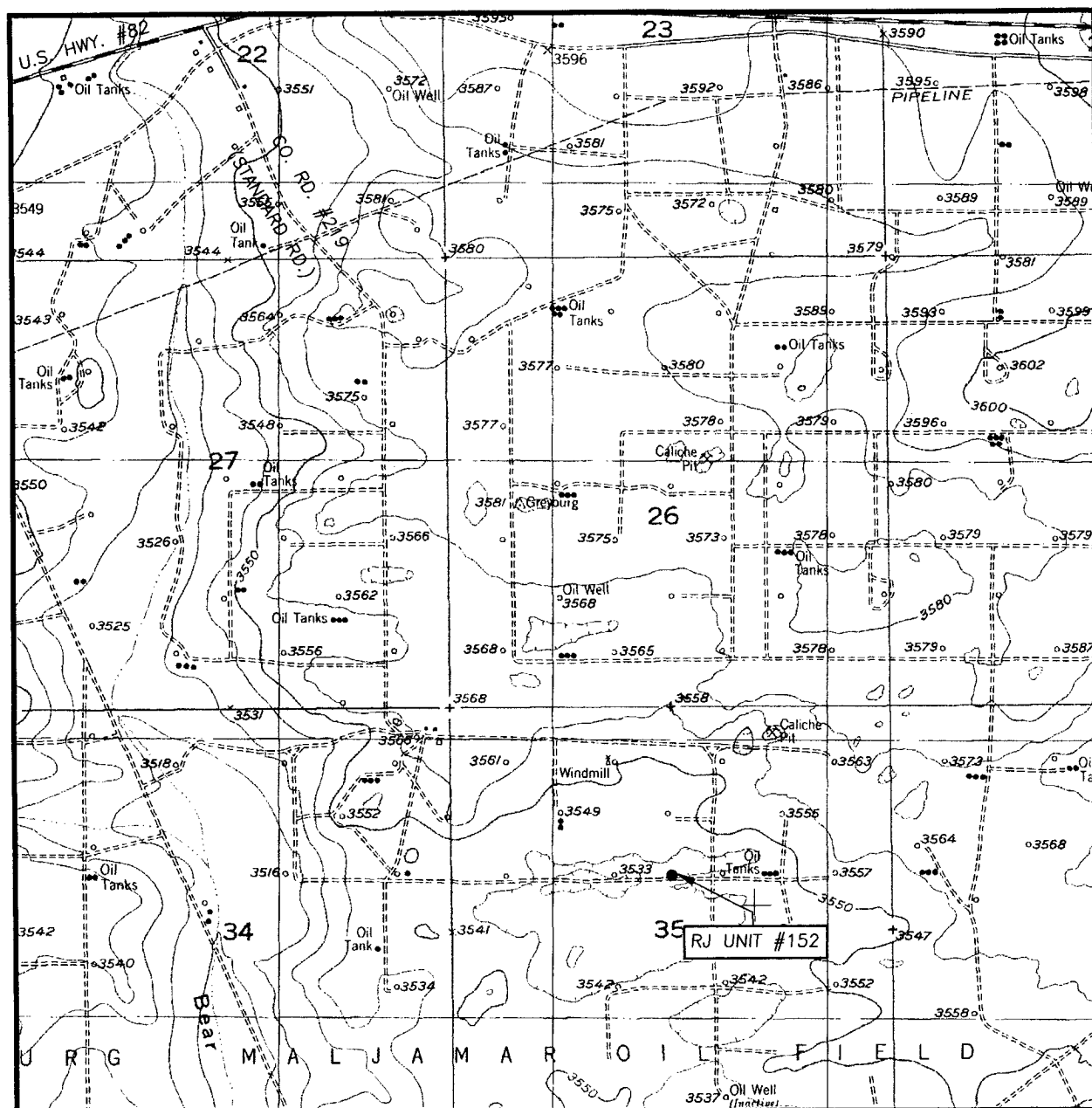
RJ UNIT #152  
LOCATED 1980 FEET FROM THE NORTH LINE  
AND 2630 FEET FROM THE EAST LINE OF SECTION 35,  
TOWNSHIP 17 SOUTH, RANGE 29 EAST, N.M.P.M.,  
EDDY COUNTY, NEW MEXICO.

Survey Date: 09/21/06		Sheet 1 of 1 Sheets	
W.O. Number: 06.11.1428		Dr By: J.R.	Rev 1:N/A
Date: 09/25/06	Disk: CD#6	06111428	Scale: 1"=100'



**PROVIDING SURVEYING SERVICES  
SINCE 1946  
JOHN WEST SURVEYING COMPANY  
412 N. DAL PASO  
HOBBS, N.M. 88240  
(505) 393-3117**

# LOCATION VERIFICATION MAP



SCALE: 1" = 2000'

CONTOUR INTERVAL:  
RED LAKE SE, N.M. - 10'

SEC. 35 TWP. 17-S RGE. 29-E

SURVEY \_\_\_\_\_ N.M.P.M.

COUNTY EDDY STATE NEW MEXICO

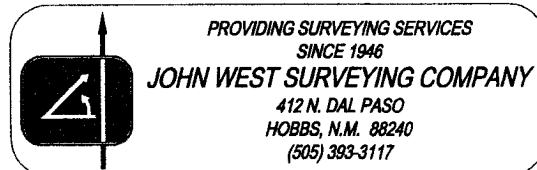
DESCRIPTION 1980' FNL & 2630' FEL

ELEVATION 3535'

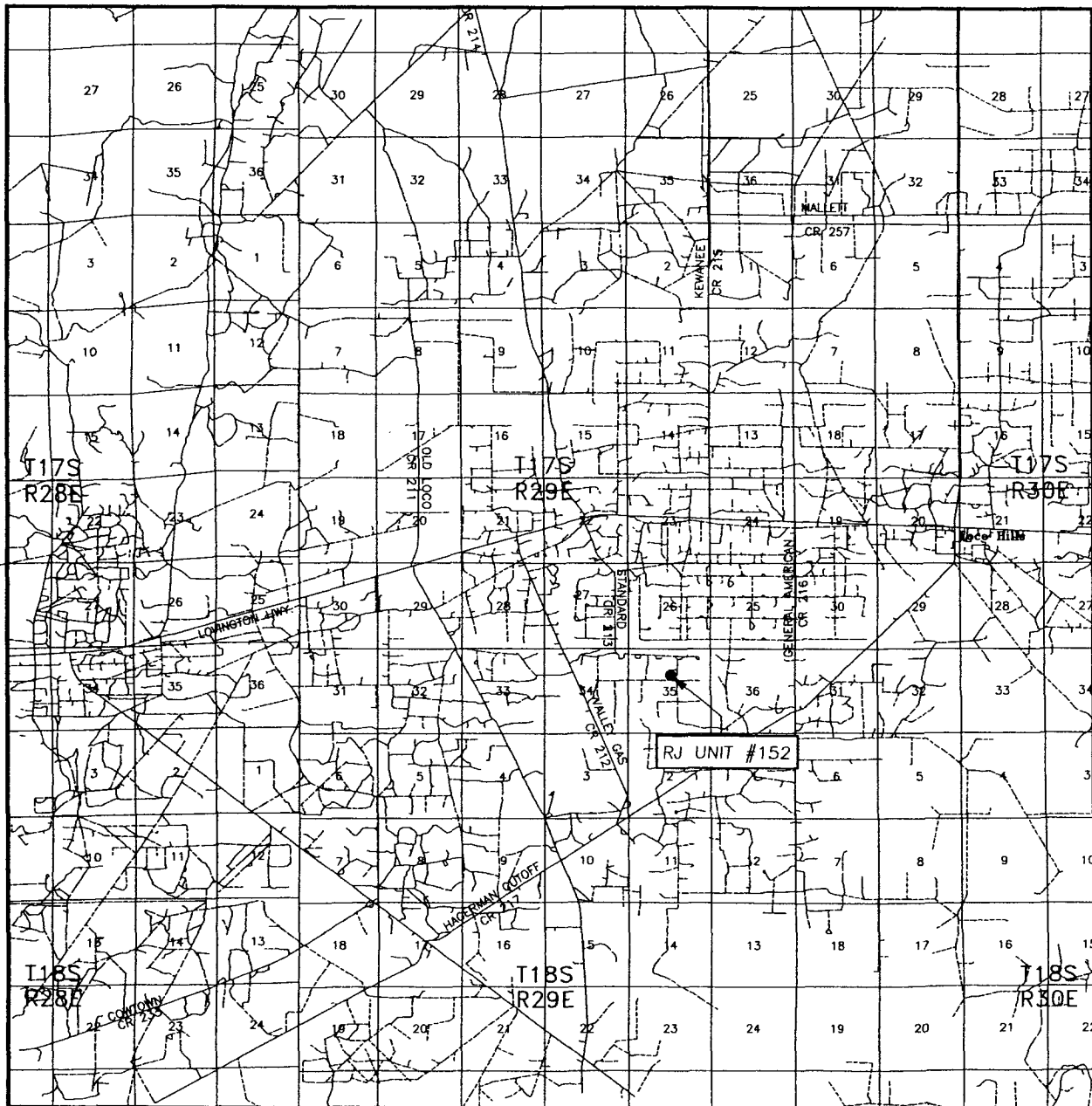
OPERATOR COG OPERATING, LLC

LEASE RJ UNIT

U.S.G.S. TOPOGRAPHIC MAP  
RED LAKE SE, N.M.



# VICINITY MAP



SCALE: 1" = 2 MILES

SEC. 35 TWP. 17-S RGE. 29-E

SURVEY N.M.P.M.

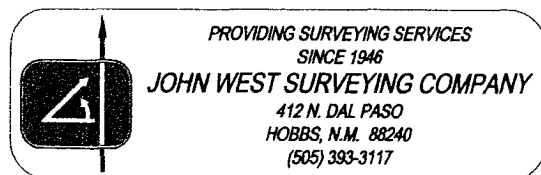
COUNTY EDDY STATE NEW MEXICO

DESCRIPTION 1980' FNL & 2630' FEL

ELEVATION 3535'

OPERATOR COG OPERATING, LLC

LEASE RJ UNIT



PROVIDING SURVEYING SERVICES  
SINCE 1946

**JOHN WEST SURVEYING COMPANY**

412 N. DAL PASO  
HOBBS, N.M. 88240  
(505) 393-3117

Attached to Form 3160-3  
COG Operating LLC  
RJ Unit #152  
1980 FNL & 2630 FEL  
SW/4 NE/4, Sec 35 T17S R29E  
Eddy County, NM

## DRILLING PROGRAM

### 1. Geologic Name of Surface Formation

Quaternary

### 2. Estimated Tops of Important Geologic Markers:

Quaternary	Surface
Top of Salt	370'
Base of Salt	690'
Yates	850'
Queen	1835'
San Andres	2618'
Glorietta	4000'

### 3. Estimated Depths of Anticipated Fresh Water, Oil and Gas:

Water Sand	150'	Fresh Water
Grayburg	2000'	Oil/Gas
San Andres	2618'	Oil/Gas
Paddock	4000'	Oil/Gas

No other formations are expected to give up oil, gas or fresh water in measurable quantities. Setting 13 3/8" casing to 250' and circulating cement back to surface will protect the surface fresh water sand. Salt Section will be protected by setting 8 5/8" casing to 850' and circulating cement back to surface. Any shallower zones above TD, which contain commercial quantities of oil and/or gas, will have cement circulated across them by cementing 5 1/2" production casing, which will be run at TD.

### 4. Casing Program:

Hole Size	Interval	OD Casing	Weight, Grade, Jt, Cond., Type
17 1/2"	0-250'	13 3/8"	48#, H-40, ST&C, New, R-3
12 1/4"	0-850'	8 5/8"	24#, J-55, ST&C, New, R-3
7 7/8"	0-TD	5 1/2"	17#, J-55, LT&C, New, R-3

Attached to Form 3160-3  
COG Operating LLC  
RJ Unit #152  
1980 FNL & 2630 FEL  
SW/4 NE/4, Sec 35 T17S R29E  
Eddy County, NM

**5. Cement Program:**

13 3/8" Surface Casing: Circulate to Surface with Class C w/2% CaCl<sub>2</sub>.

8 5/8 Intermediate Casing: Circulate to Surface with Class C W/2% CaCl<sub>2</sub>.

5 1/2" Production Casing: Cement Casing with Class C w/6# Salt & 2/10 of 1% CFR-3 per sack. We will run a hole caliper and run sufficient cement to circulate to surface.

**6. Minimum Specifications for Pressure Control:**

The blowout preventer equipment (BOP) shown in Exhibit #9 will consist of a double ram-type (2000 psi WP) preventer. This unit will be hydraulically operated and the ram type preventer will be equipped with blind rams on top of 4 1/2" drill pipe rams on bottom. The BOP will be nipped up on the 13 3/8" surface casing and tested to 1500 psi by a 3<sup>rd</sup> party. The BOP will then be nipped up on the 8 5/8" intermediate casing and tested by a 3<sup>rd</sup> party to 2000 psi and used continuously until TD is reached. All BOP's and accessory equipment will be tested to 2000 psi before drilling out of intermediate casing. Pipe rams will be operationally checked each 24-hour period. Blind rams will be operationally checked on each trip out of the hole. These checks will be noted on the daily tour sheets. Other accessories to the BOP equipment (Exhibit #10) will include a Kelly cock and floor safety valve and choke lines and choke manifold (Exhibit #11) with 2000 psi WP rating.

**7. Types and Characteristics of the Proposed Mud System:**

The well will be drilled to TD with a combination of brine, cut brine and polymer mud system. The applicable depths and properties of this system are as follows:

DEPTH	TYPE	WEIGHT	VISCOSITY	WATERLOSS
0-250'	Fresh Water	8.5	28	N.C.
250-850'	Brine	10	30	N.C.
850'-TD	Cut Brine	9.1	29	N.C.

Sufficient mud materials to maintain mud properties and meet minimum lost circulation and weight increase requirements will be kept at the well site at all times.

**8. Auxiliary Well Control and Monitoring Equipment:**

- A. Kelly cock will be kept in the drill string at all times.
- B. A full opening drill pipe-stabbing valve with proper drill pipe connections will be on the rig floor at all times.

**9. Logging, Testing and Coring Program:**

Attached to Form 3160-3  
COG Operating LLC  
RJ Unit #152  
1980 FNL & 2630 FEL  
SW/4 NE/4, Sec 35 T17S R29E  
Eddy County, NM

- A. The electric logging program will consist of GR-Dual Laterolog, Spectral Density, Dual Spaced Neutron, CSNG Log and will be ran from T.D. to 8 5/8 casing shoe.
- B. Drill Stem test is not anticipated.
- C. No conventional coring is anticipated.
- D. Further testing procedures will be determined after the 5 1/2" production casing has been cemented at TD based on drill shows and log evaluation.

**10. Abnormal Conditions, Pressures, Temperatures and Potential Hazards:**

No abnormal pressures or temperatures are anticipated. The estimated bottom hole at TD is 110 degrees and estimated maximum bottom hole pressure is 2300 psig. Low levels of Hydrogen sulfide have been monitors in producing wells in the area, so H2S may be present while drilling of the well a plan is attached to the Drilling program. No major loss of circulation zones has been reported in offsetting wells.

**11. Anticipated Starting Date and Duration of Operations:**

Road and location work will not begin until approval has been received from the BLM. The anticipated spud date is November 20, 2006. Once commenced, the drilling operation should be finished in approximately 10 days. If the well is productive, an additional 30 days will be required for completion and testing before a decision is made to install permanent facilities.

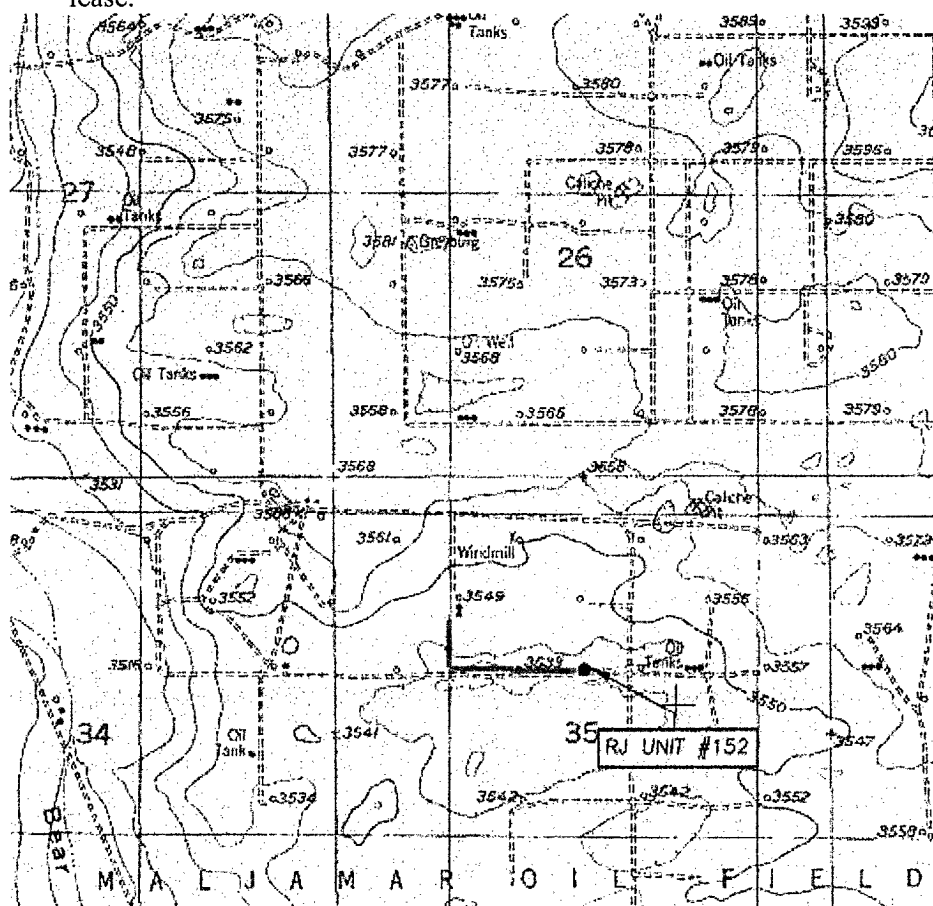


Attached to Form 3160-3  
COG Operating LLC  
RJ Unit #152  
1980 FNL & 2630 FEL  
SW/4 NE/4, Sec 35 T17S R29E  
Eddy County, NM

## SURFACE USE AND OPERATING PLAN

### 1. Existing & Proposed Access Roads

- A. The well site and elevation plat for the proposed well is shown in Exhibit #1. It was staked by John West Engineering, Hobbs, NM.
- B. All roads to the location are shown in Exhibit below. The existing lease roads are illustrated in Blue and are adequate for travel during drilling and production operations. Upgrading existing roads prior to drilling well will be done where necessary.
- C. Directions to Location: From intersection of Hwy 82 and CR 213, go southeast 1.7 miles, turn east .8 mile, turn south .2 mile, turn west .1 mile to location.
- D. Routine grading and maintenance of existing roads will be conducted as necessary to maintain their condition as long as any operations continue on this lease.



Flowline in Green  
Exhibit #4

Attached to Form 3160-3  
COG Operating LLC  
RJ Unit #152  
1980 FNL & 2630 FEL  
SW/4 NE/4, Sec 35 T17S R29E  
Eddy County, NM

**2. Proposed Access Road:**

Exhibit #3 shows the 0' of new access road to be constructed. The road will be constructed as follows:

- A. The Maximum width of the running surface will be 14'. The road will be crowned and ditched and constructed of 6" rolled and compacted caliche. Ditches will be at 3:1 slope and 4 feet wide. Water will be diverted where necessary to avoid ponding, prevent erosion, maintain good drainage, and to be consistent with local drainage patterns.
- B. The average grade will be less than 1%.
- C. No turnouts are planned.
- D. No culverts, cattleguard, gates, low water crossings or fence cuts are necessary.
- E. Surfacing material will consist of native caliche. Caliche will be obtained from the nearest BLM approved caliche pit or reserve pit area.
- F. The proposed access road as shown in Exhibit #3 has been centerline flagged by John West Engineering, Hobbs, New Mexico.

**3. Location of Existing Wells & Proposed flow lines for New Wells:**

Exhibit #4 shows all existing wells within a one-mile radius of this well. As shown on this plat there are numerous wells producing from the San Andres formations. Proposed flow lines, in green, will follow an archaeologically approved route to the existing battery.

**4. Location of Existing and/or Proposed Facilities:**

- A. COG Operating LLC does operate a production facility on this lease.
- B. If the well is productive, contemplated facilities will be as follows:
  - 1) GB/San Andres Completion: Will be sent to the RJ Unit tank battery. The Facility is shown in Exhibit #5.
  - 2) The tank battery and facilities including all flow lines and piping will be installed according to API specifications.
  - 3) Any additional caliche will be obtained from a BLM approved caliche pit. Any additional construction materials will be purchased from contractors.

## Eddy County, NM

- 4) It will be necessary to run electric power if this well is productive. Power will be run by CVE and they will send in a separate plan for power.

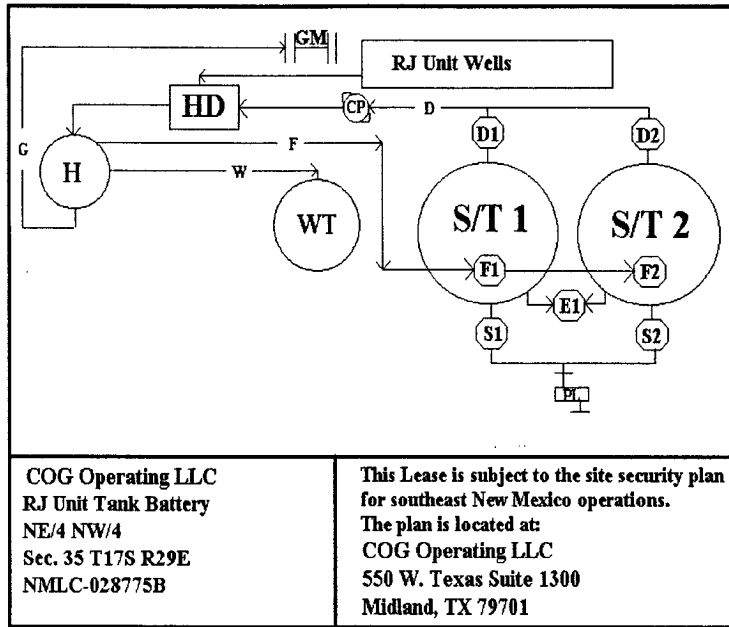


Exhibit #5

- A. If the well is productive, rehabilitation plans are as follows:
- 1) The reserve pit will be back filled after the contents of the pit are dry (within 120 days after the well is completed).
  - 2) Topsoil removed from the drill site will be used to recontour the pit area to the original natural level, as nearly as possible, and reseeded as per BLM specifications.

### 5. Location and Type of Water Supply:

The well will be drilled with combination brine and fresh water mud system as outlined in the drilling program. The water will be obtained from commercial water stations in the area and hauled to location by transport truck over the existing and proposed access roads shown in Exhibit #4. If a commercial fresh water source is nearby, fasline may be laid along existing road ROW's and fresh water pumped to the well. No water well will be drilled on the location.

#### 6. Source of Construction Materials:

All caliche required for construction of the drill pad and proposed new access road (approximately 2500 cubic yards) will be obtained from a BLM approved caliche pit or the reserve pit.

Attached to Form 3160-3  
COG Operating LLC  
RJ Unit #152  
1980 FNL & 2630 FEL  
SW/4 NE/4, Sec 35 T17S R29E  
Eddy County, NM

**7. Methods of Handling Water Disposal:**

- A. Drill cuttings not retained for evaluation purposes will be disposed into the reserve pit.
- B. Drilling fluids will be contained in a lined working pit. The reserve pit will contain any excess drilling fluid or flow from the well during drilling, cementing and completion operations. The reserve pit will be an earthen pit, approximately 125' X 125' X 10' deep with a dividing wall dividing it into two horseshoe style pits and fenced on three sides prior to drilling. It will be fenced on the fourth side immediately following rig removal. The reserve pit will be lined 125' X 125' X 10'. The reserve pit will be lined (12-mil thickness) to minimize loss of drilling fluids and saturation of the ground with brine water.
- C. Water produced from the well during completion may be disposed into the reserve pit or a steel tank (depending on the rates). After the well is permanently placed on production, produced water will be collected in tanks (fiberglass) until pumped to an approved disposal system; produced oil will be collected in steel tanks until sold.
- D. Garbage and trash produced during drilling or completion operations will be collected in a trash bin and hauled to an approved landfill. All water and fluids will be disposed of into the reserve pit. Salts and other chemicals produced during drilling or testing will be disposed into the reserve pit. No toxic waste or hazardous chemicals will be produced by this operation.
- E. After the rig is moved out and the well is either completed or abandoned, all waste materials will be cleaned up within 30 days. The reserve pit will be completely fenced and kept closed until it has dried. When the reserve pit is dry enough to breakout and backfill and reseeded as per BLM specifications as weather permits. In the event of a dry hole only a dry hole marker will remain.

**8. Ancillary Facilities:**

No airstrip, campsite or other facilities will be built as a result of the operation on this well.

Attached to Form 3160-3  
COG Operating LLC  
RJ Unit #152  
1980 FNL & 2630 FEL  
SW/4 NE/4, Sec 35 T17S R29E  
Eddy County, NM

**9. Well Site Layout:**

- A. The drill pad layout, with elevations staked by John West Engineering, is shown in Exhibit #6. Dimensions of the pad and pits are shown. Topsoil, if available, will be stockpiled per BLM specifications. Because the pad is almost level no major cuts will be required.
- B. Diagram below shows the proposed orientation of reserve pit, working pit and access road. There is a possibility that the pits will be moved around depending on Caliche in the area. No permanent living facilities are planned, but a temporary foreman/toolpusher's trailer will be on location during the drilling operations.
- C. The reserve pit will be lined with high quality plastic sheeting (12 mil thickness).

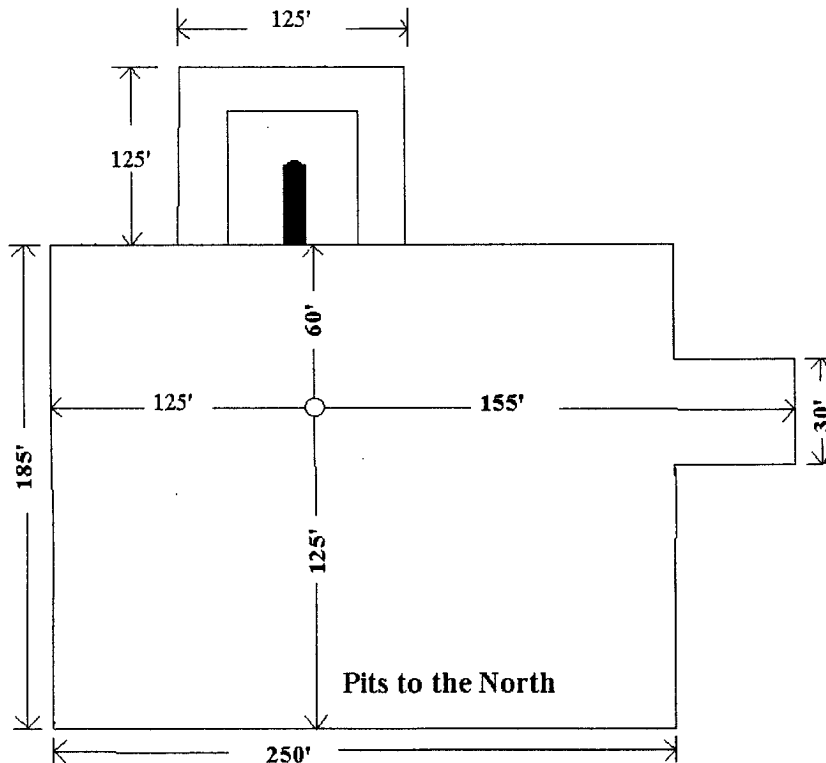


Exhibit #6

**10. Plans for Restoration of the Surface:**

- A. Upon completion of the proposed operations, the pit area, after allowing drying, will be broken out and leveled. The original topsoil will be returned to the pit area,

Attached to Form 3160-3  
COG Operating LLC  
RJ Unit #152  
1980 FNL & 2630 FEL  
SW/4 NE/4, Sec 35 T17S R29E  
Eddy County, NM

which will be leveled and contoured to as nearly the original topography as possible.

- B. The disturbed area will be revegetated by reseeding during the proper growing season with a seed mixture of native grasses as recommended by the BLM.
- C. Three sides of the reserve pit will be fenced prior to and during drilling operations. At the time that the rig is removed, the reserve pit will be fenced on the rig (fourth) side to prevent livestock from being entrapped. The fencing will remain in place until the pit area is cleaned up and leveled. No oil will be left on the surface of the fluid in the pit.
- D. Upon completion of proposed operations, if the well is completed, the reserve pit area will be treated as outlined above within the same prescribed time. Any additional caliche required for facilities will be obtained from a BLM approved caliche pit. Topsoil removed from the drill site will be used to recontour the pit area to its original natural level and reseeded as per BLM specifications.

**11. Surface Ownership:**

The well site and lease is located entirely on Federal surface. We have notified the surface lessee of the impending operations. According to BLM the leasee is Bogel Farms, Lewis Derrick, PO Box 441, Artesia NM 88210.

**12. Other Information:**

- A. The area around the well site is grassland and the topsoil is sandy. The vegetation is native scrub grass with sagebrush.
- B. There is no permanent or live water in the immediate area.
- C. A Cultural Resources Examination has been requested and will be forwarded to your office in the near future.

**13. Lessee's and Operator's Representative:**

The COG Operating LLC representative responsible for assuring compliance with the surface use plan is as follows:

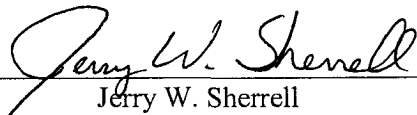
Jerry W. Sherrell  
COG Operating LLC  
P.O. Box 960  
Artesia, NM 88211-0960  
Phone (505) 748-1288 (office)

Attached to Form 3160-3  
COG Operating LLC  
RJ Unit #152  
1980 FNL & 2630 FEL  
SW/4 NE/4, Sec 35 T17S R29E  
Eddy County, NM

### CERTIFICATION

I hereby certify that I, or person under my direct supervision, have inspected the proposed drill site and access route; that I am familiar with the conditions which currently exist; that the statements made in this plan are to the best of my knowledge, true and correct; and the work associated with the operations proposed herein will be performed by COG Operating LLC and its contractors and subcontractors in conformity with this plan and the terms and conditions which it is approved. This statement is subject to the provisions of 18 U.S.C. 1001 for the filing of a false statement.

Date: 10-24-2006

Signed:   
Jerry W. Sherrell

## COG Operating LLC

### Hydrogen Sulfide Drilling Operation Plan

#### I. HYDROGEN SULFIDE TRAINING

All personnel, whether regularly assigned, contracted, or employed on an unscheduled basis, will receive training from a qualified instructor in the following areas prior to commencing drilling operations on this well:

1. The hazards and characteristics of hydrogen sulfide (H<sub>2</sub>S)
2. The proper use and maintenance of personal protective equipment and life support systems.
3. The proper use of H<sub>2</sub>S detectors, alarms, warning systems, briefing areas, evacuation procedures, and prevailing winds.
4. The proper techniques for first aid and rescue procedures.

In addition, supervisory personnel will be trained in the following areas:

1. The effects of H<sub>2</sub>S on metal components. If high tensile tubulars are to be used, personnel will be trained in their special maintenance requirements.
2. Corrective action and shut-in procedures when drilling or reworking a well and blowout prevention and well control procedures.
3. The contents and requirements of the H<sub>2</sub>S Drilling Operations Plan and Public Protection Plan.

There will be an initial training session just prior to encountering a known or probable H<sub>2</sub>S zone (within 3 days or 500 feet) and weekly H<sub>2</sub>S and well control drills for all personnel in each crew. The initial training session shall include a review of the site specific H<sub>2</sub>S Drilling Operations Plan and the Public Protection Plan. **The concentrations of H<sub>2</sub>S of wells in this area from surface to TD are low enough that a contingency plan is not required.**



## II. H2S SAFETY EQUIPMENT AND SYSTEMS

Note: All H2S safety equipment and systems will be installed, tested, and operational when drilling reaches a depth of 500 feet above, or three days prior to penetrating the first zone containing or reasonable expected to contain H2S.

### 1. Well Control Equipment:

- A. Flare line.
- B. Choke manifold.
- C. Blind rams and pipe rams to accommodate all pipe sizes with properly sized closing unit.
- D. Auxiliary equipment may include if applicable: annular preventer & rotating head.

### 2. Protective equipment for essential personnel:

- A. Mark II Survive air 30-minute units located in the doghouse and at briefing areas, as indicated on well site diagram.

### 3. H2S detection and monitoring equipment:

- A. 1 portable H2S monitors positioned on location for best coverage and response. These units have warning lights and audible sirens when H2S levels of 20 PPM are reached.

### 4. Visual warning systems:

- A. Wind direction indicators as shown on well site diagram (Exhibit #8).
- B. Caution/Danger signs (Exhibit #7) shall be posted on roads providing direct access to location. Signs will be painted a high visibility yellow with black lettering of sufficient size to be readable at a reasonable distance from the immediate location. Bilingual signs will be used, when appropriate. See example attached.

### 5. Mud program:

- A. The mud program has been designed to minimize the volume of H2S circulated to surface. Proper mud weight, safe drilling practices, and the use of H2S scavengers will minimize hazards when penetrating H2S bearing zones.

**6. Metallurgy:**

- A. All drill strings, casings, tubing, wellhead, blowout preventer, drilling spool, kill lines, choke manifold and lines, and valves shall be suitable for H2S service.
- B. All elastomers used for packing and seals shall be H2S trim.

**7. Communication:**

- A. Radio communications in company vehicles including cellular telephone and 2-way radio.
- B. Land line (telephone) communication at Office.

**8. Well testing:**

- A. Drill stem testing will be performed with a minimum number of personnel in the immediate vicinity, which are necessary to safely and adequately conduct the test. The drill stem testing will be conducted during daylight hours and formation fluids will not be flowed to the surface. All drill-stem-testing operations conducted in an H2S environment will use the closed chamber method of testing.
- B. There will be no drill stem testing.

**EXHIBIT #7**

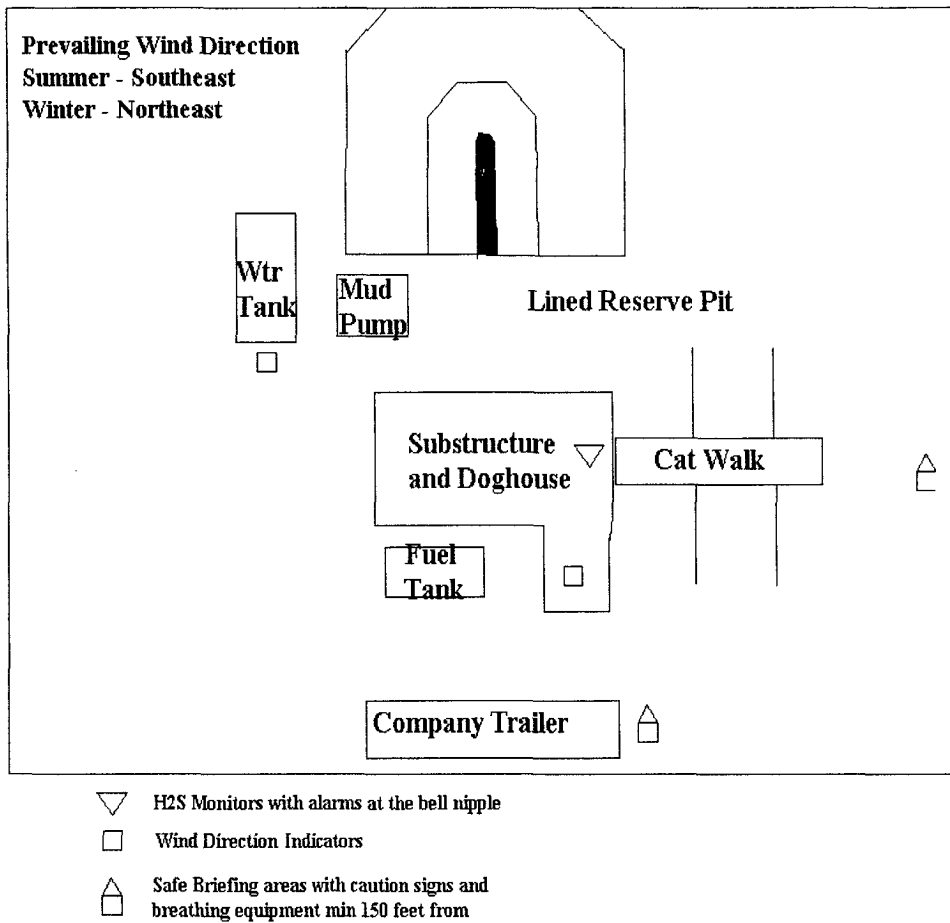
**WARNING**  
**YOU ARE ENTERING AN H2S**  
**AUTHORIZED PERSONNEL ONLY**

- 1. BEARDS OR CONTACT LENSES NOT ALLOWED**
- 2. HARD HATS REQUIRED**
- 3. SMOKING IN DESIGNATED AREAS ONLY**
- 4. BE WIND CONSCIOUS AT ALL TIMES**
- 5. CHECK WITH MACK ENERGY FOREMAN AT OFFICE**

**MACK ENERGY CORPORATION**

**1-505-748-1288**

**DRILLING LOCATION H2S SAFTY EQUIPMENT**  
**Exhibit # 8**



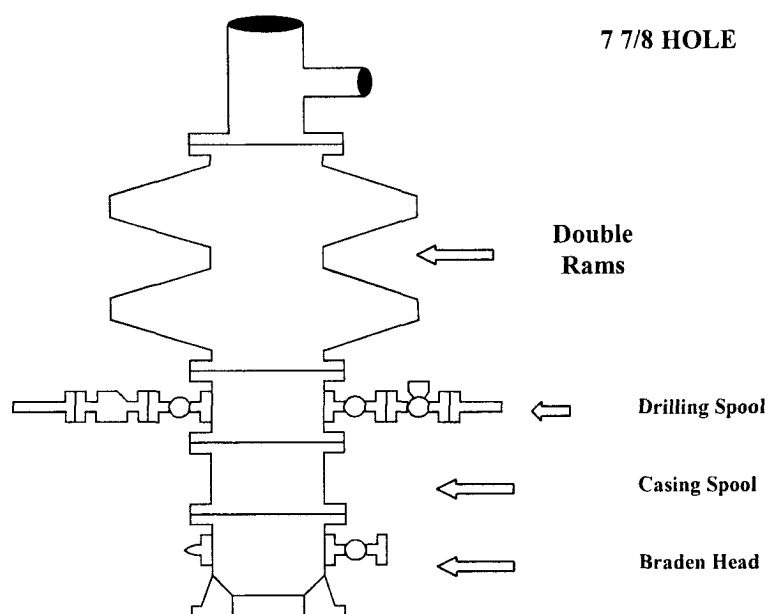
**Attachment to Exhibit #9**  
**NOTES REGARDING THE BLOWOUT PREVENTERS**  
**RJ Unit #152**  
**Eddy County, New Mexico**

1. Drilling nipple to be so constructed that it can be removed without use of a welder through rotary table opening, with minimum I.D. equal to preventer bore.
2. Wear ring to be properly installed in head.
3. Blow out preventer and all fittings must be in good condition, 2000 psi WP minimum.
4. All fittings to be flanged.
5. Safety valve must be available on rig floor at all times with proper connections, valve to be full 2000 psi WP minimum.
6. All choke and fill lines to be securely anchored especially ends of choke lines.
7. Equipment through which bit must pass shall be at least as large as the diameter of the casing being drilled through.
8. Kelly cock on Kelly.
9. Extension wrenches and hands wheels to be properly installed.
10. Blow out preventer control to be located as close to driller's position as feasible.
11. Blow out preventer closing equipment to include minimum 40-gallon accumulator, two independent sources of pump power on each closing unit installation all API specifications.

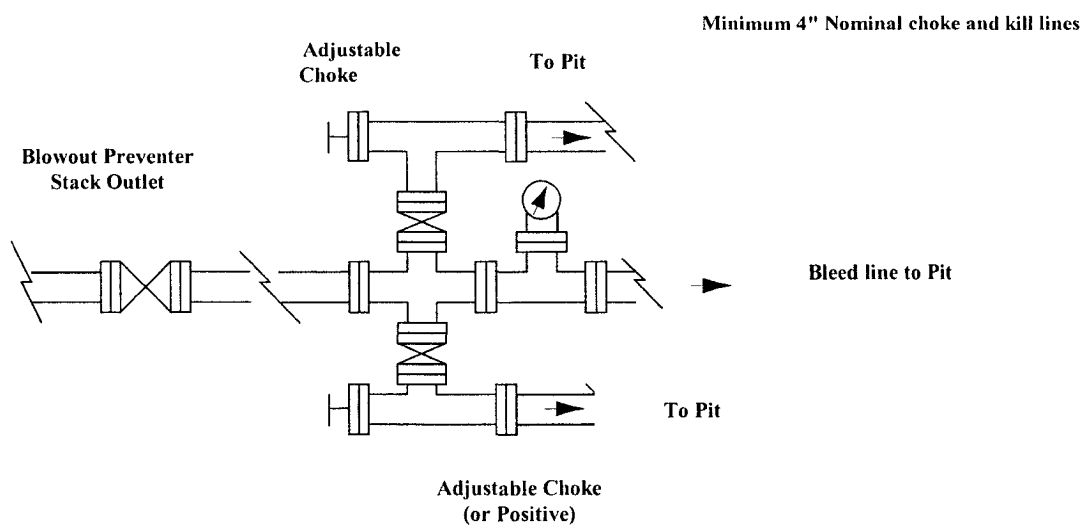
# COG Operating LLC

## Exhibit #9

### BOPE Schematic



Choke Manifold Requirement (2000 psi WP)  
No Annular Required



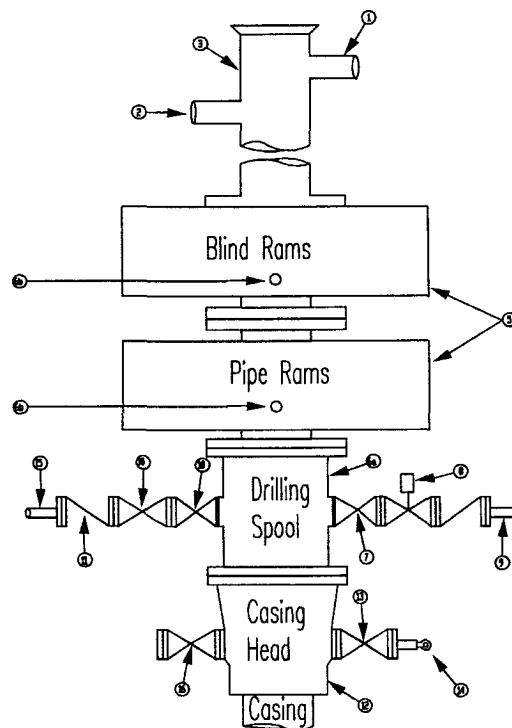
**COG Operating LLC**  
**Minimum Blowout Preventer Requirements**  
**2000 psi Working Pressure**  
**2 MWP**  
**EXHIBIT #10**

**Stack Requirements**

NO.	Items	Min. I.D.	Min. Nominal
1	Flowline		2"
2	Fill up line		2"
3	Drilling nipple		
4	Annular preventer		
5	Two single or one dual hydraulically operated rams		
6a	Drilling spool with 2" min. kill line and 3" min choke line outlets		2" Choke
6b	2" min. kill line and 3" min. choke line outlets in ram. (Alternate to 6a above)		
7	Valve Gate Plug	3 1/8	
8	Gate valve-power operated	3 1/8	
9	Line to choke manifold		3"
10	Valve Gate Plug	2 1/16	
11	Check valve	2 1/16	
12	Casing head		
13	Valve Gate Plug	1 13/16	
14	Pressure gauge with needle valve		
15	Kill line to rig mud pump manifold		2"

**OPTIONAL**

16	Flanged Valve	1 13/16	
----	---------------	---------	--



**CONTRACTOR'S OPTION TO FURNISH:**

1. All equipment and connections above bradenhead or casinghead. Working pressure of preventers to be 2000 psi minimum.
2. Automatic accumulator (80 gallon, minimum) capable of closing BOP in 30 seconds or less and, holding them closed against full rated working pressure.
3. BOP controls, to be located near drillers' position.
4. Kelly equipped with Kelly cock.
5. Inside blowout preventer or its equivalent on derrick floor at all times with proper threads to fit pipe being used.
6. Kelly saver-sub equipped with rubber casing protector at all times.
7. Plug type blowout preventer tester.
8. Extra set pipe rams to fit drill pipe in use on location at all times.
9. Type RX ring gaskets in place of Type R.

**COG TO FURNISH:**

1. Bradenhead or casing head and side valves.
2. Wear bushing. If required.

**GENERAL NOTES:**

1. Deviations from this drawing may be made only with the express permission of COG's Drilling Manager.
2. All connections, valves, fittings, piping, etc., subject to well or pump pressure must be flanged (suitable clamp connections acceptable) and have minimum working pressure equal to rated working pressure of preventers up through choke valves must be full opening and suitable for high pressure mud service.
3. Controls to be of standard design and each marked, showing opening and closing position
4. Chokes will be positioned so as not to hamper or delay changing of choke beans. Replaceable parts for adjustable choke, or bean

5. sizes, retainers, and choke wrenches to be conveniently located for immediate use.
5. All valves to be equipped with hand-wheels or handles ready for immediate use.
6. Choke lines must be suitably anchored.
7. Handwheels and extensions to be connected and ready for use.
8. Valves adjacent to drilling spool to be kept open. Use outside valves except for emergency.
9. All seamless steel control piping (2000 psi working pressure) to have flexible joints to avoid stress. Hoses will be permitted.
10. Casinghead connections shall not be used except in case of emergency.
11. Do not use kill line for routine fill up operations.

# COG Operating LLC

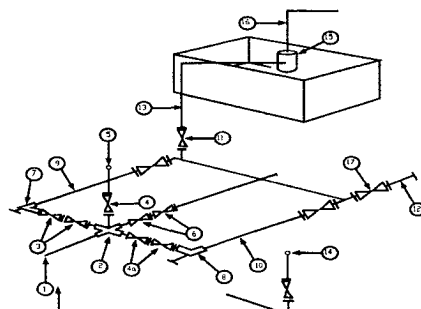
Exhibit #11

## MINIMUM CHOKE MANIFOLD

3,000, 5,000, and 10,000 PSI Working Pressure

2 M will be used or greater

3 MWP - 5 MWP - 10 MWP



Mud Pit

Reserve Pit

\* Location of separator optional

Below Substructure

### Minimum requirements

No.		3,000 MWP			5,000 MWP			10,000 MWP		
		I.D.	NOMINAL	Rating	I.D.	Nominal	Rating	I.D.	Nominal	Rating
1	Line from drilling Spool		3"	3,000		3"	5,000		3"	10,000
2	Cross 3" x 3" x 3" x 2"			3,000			5,000			
2	Cross 3" x 3" x 3" x 2"									10,000
3	Valve Gate Plug	3 1/8		3,000	3 1/8		5,000	3 1/8		10,000
4	Valve Gate Plug	1 13/16		3,000	1 13/16		5,000	1 13/16		10,000
4a	Valves (1)	2 1/16		3,000	2 1/16		5,000	2 1/16		10,000
5	Pressure Gauge			3,000			5,000			10,000
6	Valve Gate Plug	3 1/8		3,000	3 1/8		5,000	3 1/8		10,000
7	Adjustable Choke (3)	2"		3,000	2"		5,000	2"		10,000
8	Adjustable Choke	1"		3,000	1"		5,000	2"		10,000
9	Line		3"	3,000		3"	5,000		3"	10,000
10	Line		2"	3,000		2"	5,000		2"	10,000
11	Valve Gate Plug	3 1/8		3,000	3 1/8		5,000	3 1/8		10,000
12	Line		3"	1,000		3"	1,000		3"	2,000
13	Line		3"	1,000		3"	1,000		3"	2,000
14	Remote reading compound Standpipe pressure quage			3,000			5,000			10,000
15	Gas Separator		2' x 5'			2' x 5'			2' x 5'	
16	Line		4"	1,000		4"	1,000		4"	2,000
17	Valve Gate Plug	3 1/8		3,000	3 1/8		5,000	3 1/8		10,000

- (1) Only one required in Class 3M
- (2) Gate valves only shall be used for Class 10 M
- (3) Remote operated hydraulic choke required on 5,000 psi and 10,000 psi for drilling.

### EQUIPMENT SPECIFICATIONS AND INSTALLATION INSTRUCTION

1. All connections in choke manifold shall be welded, studded, flanged or Cameron clamp of comparable rating.
2. All flanges shall be API 6B or 6BX and ring gaskets shall be API RX or BX. Use only BX for 10 MWP.
3. All lines shall be securely anchored.
4. Chokes shall be equipped with tungsten carbide seats and needles, and replacements shall be available.
5. Choke manifold pressure and standpipe pressure gauges shall be available at the choke manifold to assist in regulating chokes. As an alternate with automatic chokes, a choke manifold pressure gauge shall be located on the rig floor in conjunction with the standpipe pressure gauge.
6. Line from drilling spool to choke manifold should be as straight as possible. Lines downstream from chokes shall make turns by large bends or 90 degree bends using bull plugged tees.

**United State Department of the Interior**

**BUREAU OF LAND MANAGEMENT**

**Roswell Resource Area**

**P.O. Drawer 1857**

**Roswell, New Mexico 88202-1857**

**Statement Accepting Responsibility for Operations**

**Operator name:** COG Operating LLC  
**Street or box :** 550 W. Texas, Suite 1300  
**City, State :** Midland, TX  
**Zip Code, :** 79701

**The undersigned accepts all applicable terms, conditions, stipulations, and restrictions concerning operations conducted on the leased land or portion thereof, as described below:**

**Lease No.:** LC-028775B RJ Unit #152

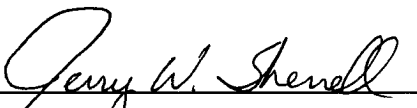
**Legal Description of land:** Sec 35 T17S R29E SW/4 NE/4

**Formation(s) (if applicable):** Grayburg Jackson SR Q G SA

**Bond Coverage: (State if individually bonded or another's bond)**  
**Statewide Bond**

**BLM Bond File No.:** NMB000215

**Authorized Signature:**

  
Jerry W. Sherrell

**Title:** Production Clerk

**Date:** 10/24/06



## SPECIAL DRILLING STIPULATIONS

### THE FOLLOWING DATA IS REQUIRED ON THE WELL SIGN

Operator's Name: COG Operating, LLC Well Name & #: RJ Unit # 152  
Location: 1980' F N L & 2630' F E L Sec. 35, T. 17 S., R. 29 E.  
Lease: LC-028775(b) County: Eddy State: New Mexico

The Special stipulations check marked below are applicable to the above described well and approval of this application to drill is conditioned upon compliance with such stipulations in addition to the General Requirements. The permittee should be familiar with the General Requirements, a copy of which is available from a Bureau of Land Management office. EACH PERMITTEE HAS THE RIGHT OF ADMINISTRATIVE APPEAL TO THESE STIPULATIONS PURSUANT TO TITLE 43 CRF 3165.3 AND 3165.4.

This permit is valid for a period of one year from the date of approval or until lease expiration or termination whichever is shorter.

#### I. SPECIAL ENVIRONMENT REQUIREMENTS

- (X ) Lesser Prairie Chicken (stips attached) ( ) Flood plain (stips attached)  
( ) San Simon Swale (stips attached) ( ) Other

#### II. ON LEASE - SURFACE REQUIREMENTS PRIOR TO DRILLING

( X ) The BLM will monitor construction of this drill site. Notify the (X ) Carlsbad Field Office at (505) 234-5972 ( ) Hobbs Office (505) 393-3612, at least 3 working days prior to commencing construction.

( X ) Roads and the drill pad for this well must be surfaced with 6 inches of compacted caliche.

( ) All topsoil and vegetation encountered during the construction of the drill site area will be stockpiled and made available for resurfacing of the disturbed area after completion of the drilling operation. Topsoil on the subject location is approximately        inches in depth. Approximately        cubic yards of topsoil material will be stockpiled for reclamation.

( X ) Other: Pits North V-Door East

#### III. WELL COMPLETION REQUIREMENTS

( ) A Communitization Agreement covering the acreage dedicated to the well must be filed for approval with the BLM. The effective date of the agreement must be prior to any sales.

( X ) Surface Restoration: If the well is a producer, the reserve pit(s) will be backfilled when dry, and cut-and-fill slopes will be reduced to a slope of 3:1 or less. All areas of the pad not necessary for production must be re-contoured to resemble the original contours of the surrounding terrain, and topsoil must be re-distributed and re-seeded with a drill equipped with a depth indicator (set at depth of ½ inch) with the following seed mixture, in pounds of Pure Live Seed (PLS), per acre. Seeding should be done either late in the fall (September 15 - November 15, before freeze up, or early as possible the following spring to take advantage of available ground moisture. **See attached seed mixture.**

##### ( ) A. Seed Mixture 1 (Loamy Sites)

Side Oats Grama (*Bouteloua curtipendula*) 5.0  
Sand Dropseed (*Sporobolus cryptandrus*) 1.0  
Plains lovegrass (*Eragrostis intermedia*) 0.5

##### ( ) B. Seed Mixture 2 (Sandy Sites)

Sand Dropseed (*Sporobolus crptandrus*) 1.0  
Sand Lovegrass (*Eragostis trichodes*) 1.0  
Plains Bristlegrass (*Setaria magrostachya*) 2.0

##### ( ) C. Seed Mixture 3 (Shallow Sites)

Side oats Grama (*Bouteloua curtipendula*) 5.0  
Green Spangletop (*Leptochloa dubia*) 2.0  
Plains Bristlegrass (*Setaria magrostachya*) 1.0

##### ( ) D. Seed Mixture 4 (Gypsum Sites)

Alkali Sacaton (*Sporobolus airoides*) 1.0  
Four-Wing Saltbush (*Atriplex canescens*) 5.0

(x ) OTHER Lesser Prairie Chicken Seed Mix

## RESERVE PIT CONSTRUCTION STANDARDS

The reserve pit shall be constructed entirely in cut material and lined with 6-mil plastic. Mineral material extracted from within the boundary of the APD during construction of the well pad and reserve pits and be used for the construction of this well pad and its immediate access road only, as long as that portion of the access road it is use on remains on-lease. Removal of any additional material from this location for construction or improvement of other well pads and other access or lease roads must first be purchased from BLM.

Reclamation: Reclamation of this type of deep pit will consist of pushing the pit walls into the pit when sufficiently dry to support track equipment. The pit liner is NOT TO BE RUPTURED to facilitate drying; a ten month period after completion of the well is allowed for drying of the pit contents.

The pit area must be contoured to the natural terrain with all contaminated drilling mud buried with at least 3 feet of clean soil. The reclaimed area will then be seeded as specified in this permit.

## OPTIONAL PIT CONSTRUCTION STANDARDS

The reserve pit may be constructed in predominantly fill material if:

- (1) Lined as specified above and
- (2) A temporary or emergency pit may be constructed immediately adjacent to the reserve pit as long as the pit remains within the APD boundary. Mineral material removed from this pit may be used for the construction of this well pad only and its immediate access road, as long as that portion of the access road the material is used on remains on-lease. Removal of any material from the APD boundary for use on other well locations or roads must first be purchased from BLM.

Reclamation of the reserve pit consists of bulldozing all reserve pit contents and contaminants into the borrow pit and covering with a minimum of 3 feet of clean soil material. The entire area must be re-contoured, all trash removed, and reseeded as specified in this permit.

## CULTURAL

Whether or not an archaeological survey has been completed and notwithstanding that operations are being conducted as approved, the lessee/operator/grantee shall notify the BLM immediately if previously unidentified cultural resources are observed during surface disturbing operations. From the time of the observation, the lessee/operator/grantee shall avoid operations that will result in disturbance to these cultural resources until directed to process by BLM.

## TRASH PIT STIPS

All trash, junk, and other waste material shall be contained in trash cages or bins to prevent scattering and will be removed and deposited in an approved sanitary landfill. Burial on site is not permitted.

PRAIRIE CHICKENS

No surface use is allowed during the following time periods; unless otherwise specified, this stipulation does not apply to operation and maintenance of production facilities.

On the lands described below: All of Section 35; Township 17 South, Range 29 East

For the purpose of: Protecting Prairie Chickens:

Drilling for oil and gas, and 3-D geophysical exploration operations will not be allowed in Lesser Prairie Chicken Habitat during the period of March 15 through June 15, each year. During that period, other activities that produce noise or involve human activity, such as the maintenance of oil and gas facilities, geophysical exploration other than 3-D operations, and pipeline, road, and well pad construction, will be allowed except between 3:00 a.m. and 9:00 a.m. The 3:00 a.m. and 9:00 a.m. restriction will not apply to normal, around-the-clock operations, such as venting, flaring, or pumping, which do not require a human presence during the period. Additionally, no new drilling will be allowed within up to 200 meters of leks known at the time of permitting. Normal vehicle use on existing roads will not be restricted. Exhaust noise from pump jack engines must be muffled or otherwise controlled so as not to exceed 75 db measured at 30 feet from the source of the noise.

BLM Serial #: LC-028775(b)  
Company Reference: COG Operating, LLC  
Well Name and Number: RJ Unit # 152

Seed Mixture for LPC Sand/Shinnery Sites

The holder shall seed all disturbed areas with the seed mixture listed below. The seed mixture shall be planted in the amounts specified in pounds of pure live seed (PLS)\* per acre. There shall be no primary or secondary noxious weeds in the seed mixture. Seed will be tested and the viability testing of seed will be done in accordance with State law(s) and within nine (9) months prior to purchase. Commercial seed will be either certified or registered seed. The seed container will be tagged in accordance with State law(s) and available for inspection by the authorized officer.

Seed will be planted using a drill equipped with a depth regulator to ensure proper depth of planting where drilling is possible. The seed mixture will be evenly and uniformly planted over the disturbed area (smaller/heavier seeds have a tendency to drop the bottom of the drill and are planted first). The holder shall take appropriate measures to ensure this does not occur. Where drilling is not possible, seed will be broadcast and the area shall be raked or chained to cover the seed. When broadcasting the seed, the pounds per acre are to be doubled. The seeding will be repeated until a satisfactory stand is established as determined by the authorized officer. Evaluation of growth will not be made before completion of at least one full growing season after seeding.

Species to be planted in pounds of pure live seed\* per acre:

<u>Species</u>	<u>lb/acre</u>
Plains Bristlegrass	5lbs/A
Sand Bluestem	5lbs/A
Little Bluestem	3lbs/A
Big Bluestem	6lbs/A
Plains Coreopsis	2lbs/A
Sand Dropseed	1lbs/A

\*\*Four-winged Saltbush 5lbs/A

\* This can be used around well pads and other areas where caliche cannot be removed.

\*Pounds of pure live seed:

Pounds of seed x percent purity x percent germination = pounds pure live seed

## CONDITIONS OF APPROVAL - DRILLING

Well Name & No. RJ Unit # 152  
Operator's Name: COG Operating LLC  
Location: 1980' FNL, 2630' FEL, SEC 35, T17S, R29E, Eddy County, NM  
Lease: LC-028775-B

### I. DRILLING OPERATIONS REQUIREMENTS:

1. The Bureau of Land Management (BLM) is to be notified at the Carlsbad Field Office, 620 East Greene St., Carlsbad, NM 88220, (505) 361-2822 for wells in Eddy County; and the Hobbs Field Station, 414 West Taylor, Hobbs NM 88240, (505) 393-3612 for wells in Lea County, in sufficient time for a representative to witness:

A. Spudding

B. Cementing casing: 13 3/8 inch 8 5/8 inch 5 1/2 inch

C. BOP tests

2. A Hydrogen Sulfide (H<sub>2</sub>S) Drilling Plan should be activated prior to drilling into the N/A Formation. A copy of the plan shall be posted at the drilling site.

3. Unless the production casing has been run and cemented or the well has been properly plugged, the drilling rig shall not be removed from over the hole without prior approval.

4. Submit a Sundry Notice (Form 3160-5, one original and five copies) for each casing string, describing the casing and cementing operations. Include pertinent information such as; spud date, hole size, casing (size, weight, grade and thread type), cement (type, quantity and top), water zones and problems or hazards encountered. The Sundry shall be submitted within 15 days of completion of each casing string. The reports may be combined into the same Sundry if they fall within the same 15 day time frame.

5. The API No. assigned to the well by NMOCD shall be included on the subsequent report of setting the first casing string.

6. A Communitization Agreement covering the acreage dedicated to this well must be filed for approval with the BLM. The effective date of the agreement shall be prior to any sales.

7. Gamma-Ray/Neutron logs shall be run from the base of the Salado Formation to the surface; cable speed not to exceed 30 feet per minute.

### II. CASING:

1. The 13 3/8 inch surface casing shall be set ABOVE THE SALT, @ APPROXIMATELY 250 FEET, below usable water and cement circulated to the surface. If cement does not circulate to the surface the appropriate BLM office shall be notified and a temperature survey or cement bond log shall be run to verify the top of the cement. Remedial cementing shall be completed prior to drilling out that string.

2. The minimum required fill of cement behind the 8 5/8 inch intermediate casing is CIRCULATE CEMENT TO THE SURFACE. This casing will be set below the salt @ approximately 850 feet.

4. The minimum required fill of cement behind the 5-1/2 inch production casing is cement shall CIRCULATE TO THE SURFACE.

5. Whenever a casing string is cemented in the R-111-P Potash Area, cement shall be allowed to stand a minimum of twelve (12) hours under pressure and a total of twenty-four (24) hours before drilling the plug or initiating tests.

### **III. PRESSURE CONTROL:**

1. All BOP systems and related equipment shall comply with well control requirements as described in Onshore Oil and Gas Order No. 2. The BOP and related equipment shall be installed and operational before drilling below the 13 3/8 inch casing shoe and shall be tested as described in Onshore Order No. 2. Any equipment failing to test satisfactorily shall be repaired or replaced.

2. Minimum working pressure of the blowout preventer and related equipment (BOPE) is 2000 psi.

3. The appropriate BLM office shall be notified in sufficient time for a representative to witness the tests.  
- A variance to test the BOP system on the 13 3/8 inch casing to the reduced pressure of 1500 psi is approved.

- The tests shall be done by an independent service company.

- The results of the test shall be reported to the appropriate BLM office.

- Testing fluid must be water or an appropriate clear liquid suitable for sub-freezing temperatures. Use of drilling mud for testing is not permitted since it can mask small leaks.

- Testing must be done in a safe workman-like manner. Hard line connections shall be required.

**Engineers can be reached at 505-706-2779 for any variances that might be necessary.**

F Wright 11/07/06