

DISTRICT I  
1625 N. French Dr., Hobbs, NM 88240  
DISTRICT II  
1301 W. Grand Avenue, Artesia, NM 88210  
DISTRICT III  
1000 Rio Brazos Rd., Aztec, NM 87410  
DISTRICT IV  
1220 S. St. Francis Dr., Santa Fe, NM 87505

State of New Mexico  
Energy, Minerals and Natural Resources Department

Form C-102  
Revised October 12, 2005

Submit to Appropriate District Office  
State Lease - 4 Copies  
Fee Lease - 3 Copies

OIL CONSERVATION DIVISION  
1220 South St. Francis Dr.  
Santa Fe, New Mexico 87505

☐ AMENDED REPORT

WELL LOCATION AND ACREAGE DEDICATION PLAT

API Number 30-015-35384	Pool Code 97255	Pool Name Black River ; Mernew, SW
Property Code	Property Name SAVAGE COM	Well Number 1
OGRID No.	Operator Name CIMAREX ENERGY CO. OF COLORADO	Elevation 3258'

Surface Location

UL or lot No.	Section	Township	Range	Lot Idn	Feet from the	North/South line	Feet from the	East/West line	County
1	23	24 S	26 E		1980	SOUTH	660	EAST	EDDY

Bottom Hole Location If Different From Surface

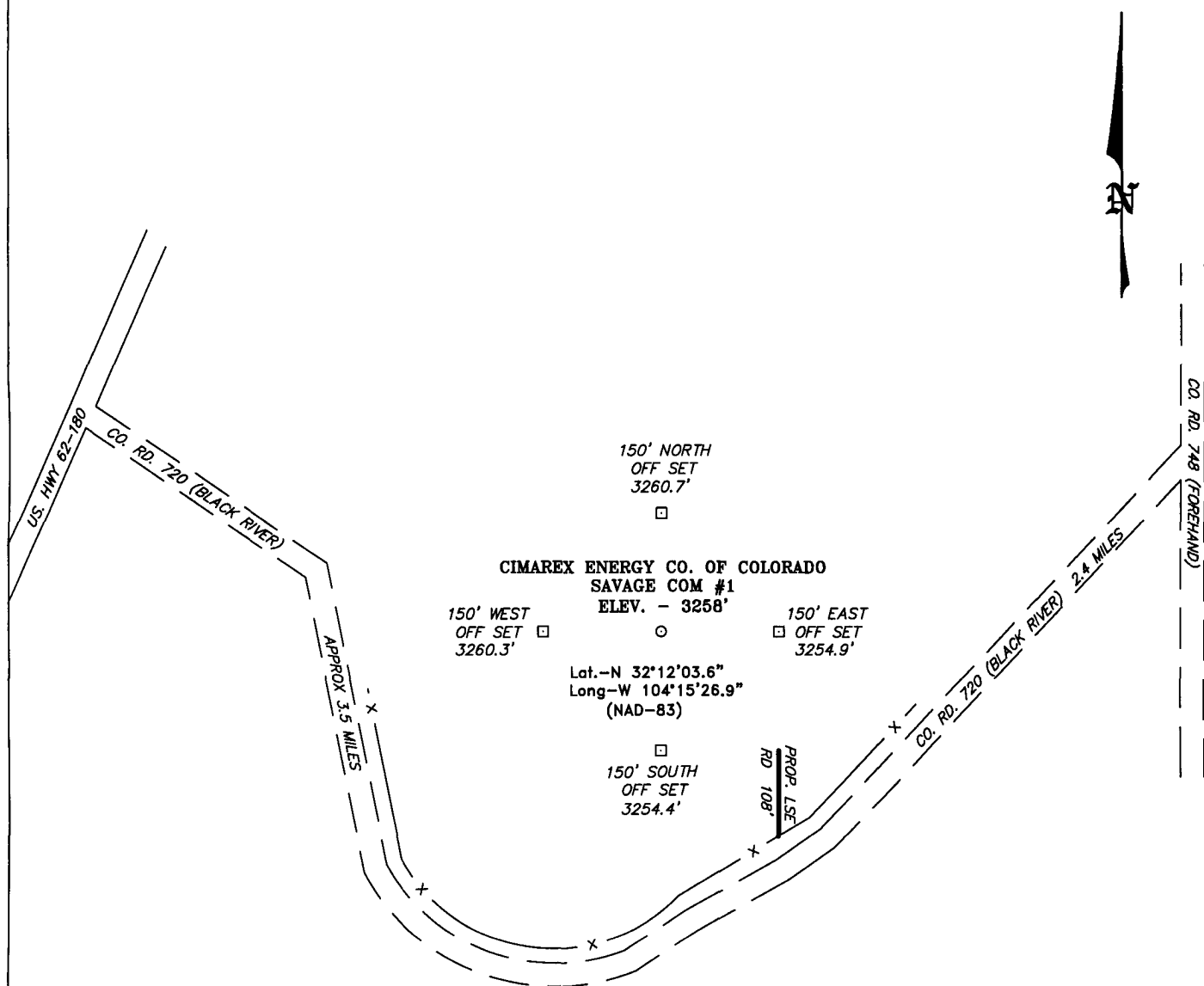
UL or lot No.	Section	Township	Range	Lot Idn	Feet from the	North/South line	Feet from the	East/West line	County

Dedicated Acres 320	Joint or Infill	Consolidation Code	Order No.
------------------------	-----------------	--------------------	-----------

NO ALLOWABLE WILL BE ASSIGNED TO THIS COMPLETION UNTIL ALL INTERESTS HAVE BEEN CONSOLIDATED  
OR A NON-STANDARD UNIT HAS BEEN APPROVED BY THE DIVISION

	<b>OPERATOR CERTIFICATION</b>  I hereby certify that the information contained herein is true and complete to the best of my knowledge and belief, and that this organization either owns a working interest or unleased mineral interest in the land including the proposed bottom hole location pursuant to a contract with an owner of such a mineral or working interest, or to a voluntary pooling agreement or a compulsory pooling order heretofore entered by the division.  Signature _____ Date _____  Printed Name _____
	<b>SURVEYOR CERTIFICATION</b>  I hereby certify that the well location shown on this plat was plotted from field notes of actual surveys made by me or under my supervision, and that the same is true and correct to the best of my belief.  NOVEMBER 18, 2006 Date Surveyed _____ Signature _____ Professional Surveyor 7977 7425 Certificate No. Gary L. Jones 7977  BASIN SURVEYS

SECTION 23, TOWNSHIP 24 SOUTH, RANGE 26 EAST, N.M.P.M.,  
EDDY COUNTY, NEW MEXICO.



Directions to Location:

FROM THE JUNCTION OF CO. RD. 748 (FOREHAND)  
AND CO. RD. 720 (BLACK RIVER), PROCEED  
SOUTHWEST 2.4 MILES TO LOCATION.

200 0 200 400 FEET  
SCALE: 1" = 200'

**CIMAREX ENERGY CO. OF COLORADO**

REF: SAVAGE COM #1 / WELL PAD TOPO

THE SAVAGE COM #1 LOCATED 1980' FROM  
THE SOUTH LINE AND 660' FROM THE EAST LINE OF  
SECTION 23, TOWNSHIP 24 SOUTH, RANGE 26 EAST,  
N.M.P.M., EDDY COUNTY, NEW MEXICO.

**BASIN SURVEYS** P.O. BOX 1786 - HOBBS, NEW MEXICO

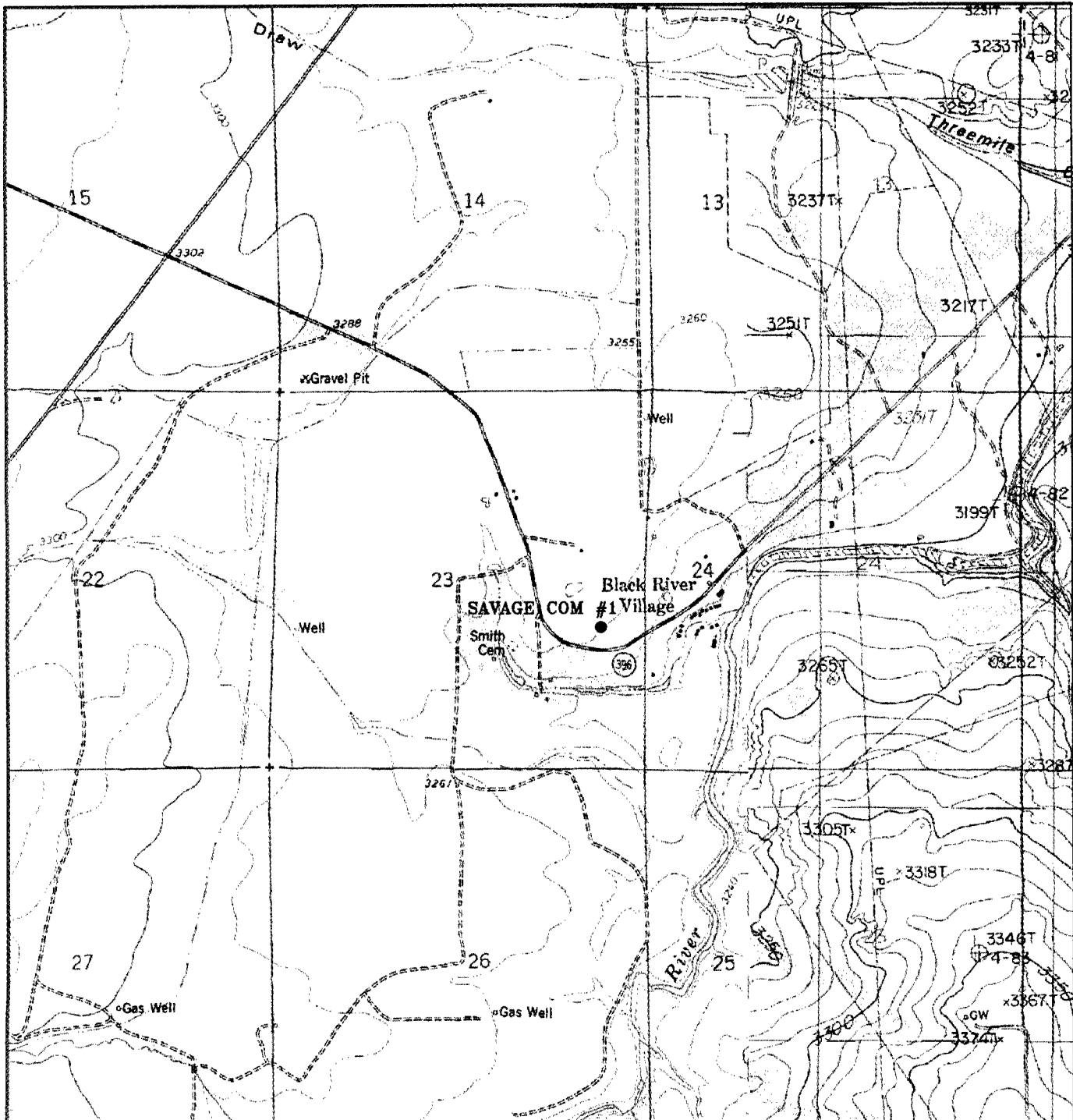
W.O. Number: 17425

Drawn By: J. M. SMALL

Date: 11-20-2006 Disk: JMS 17425W

Survey Date: 11-18-2006

Sheet 1 of 1 Sheets



### SAVAGE COM #1

Located 1980' FSL and 660' FEL

Section 23, Township 24 South, Range 26 East,  
N.M.P.M., Eddy County, New Mexico.



focused on excellence  
in the oilfield

P.O. Box 1786  
1120 N. West County Rd.  
Hobbs, New Mexico 88241  
(505) 393-7316 - Office  
(505) 392-3074 - Fax  
basinsurveys.com

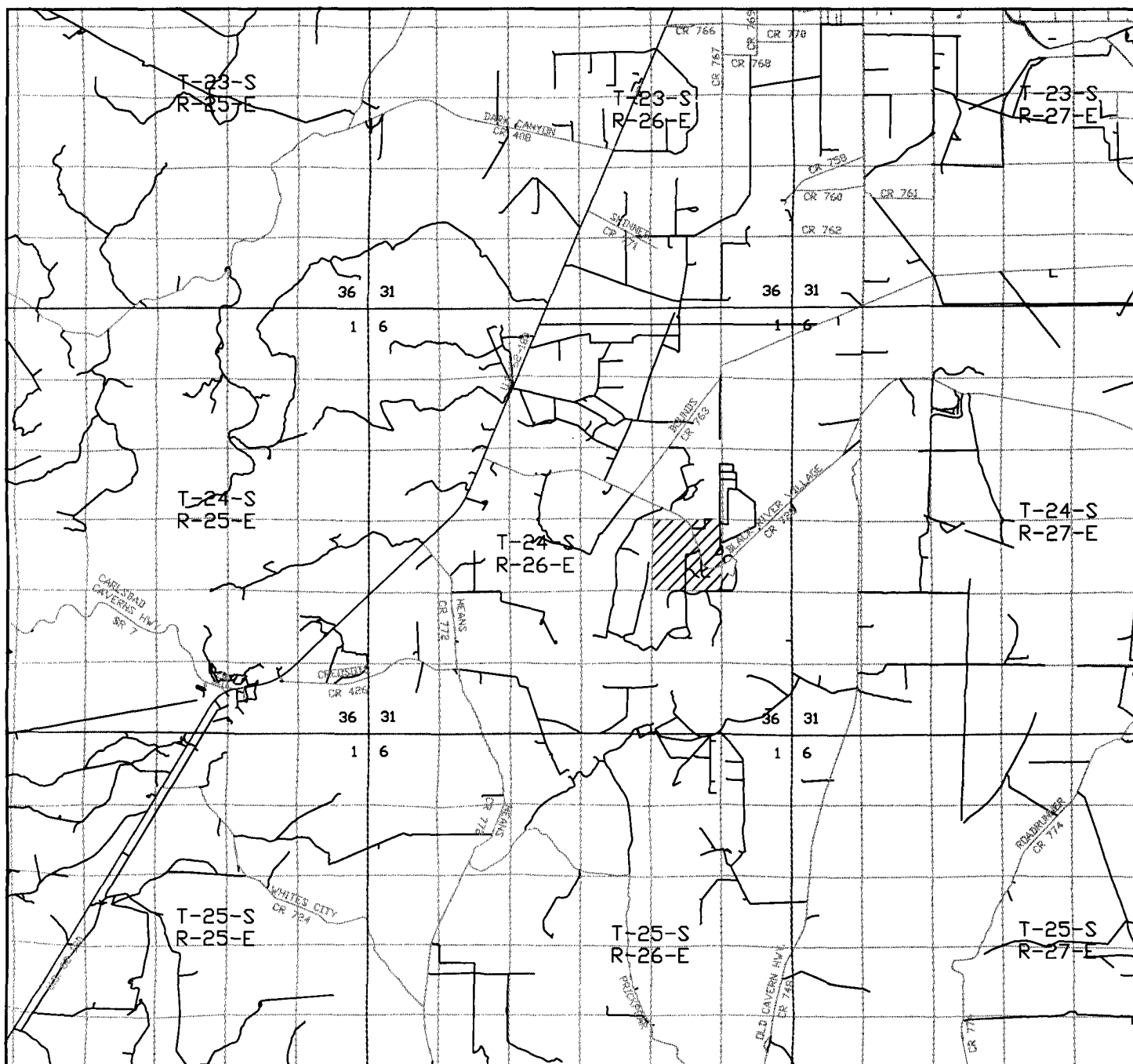
W.O. Number: JMS 17425T

Survey Date: 11-18-2006

Scale: 1" = 2000'

Date: 11-20-2006

**CIMAREX  
ENERGY CO.  
OF COLORADO**



**SAVAGE COM #1**

Located 1980' FSL and 660' FEL

Section 23, Township 24 South, Range 26 East,  
N.M.P.M., Eddy County, New Mexico.

**basin**  
**surveys**  
focused on excellence  
in the oilfield

P.O. Box 1786  
1120 N. West County Rd.  
Hobbs, New Mexico 88241  
(505) 393-7316 - Office  
(505) 392-3074 - Fax  
basinsurveys.com

W.O. Number: JMS 17425T

Survey Date: 11-18-2006

Scale: 1" = 2000'

Date: 11-20-2006

**CIMAREX**  
**ENERGY CO.**  
**OF COLORADO**

**Cementing and Mud Details**  
**Cimarex Energy Co. of Colorado**  
**Savage No. 1**  
**Unit Letter I Section 23**  
**T24S – R26E Eddy County, NM**

1. Cementing & Setting Depth:

**13 3/8" Surface**

Set 300' of 13-3/8" H-40 54.5# ST&C casing. Cement with 340 Sx. Of Premium Plus cement + additives, circulate cement to surface.

**9 5/8" Intermediate**

Set 2550' of 9-5/8" K-55 40# LT&C casing. Cement with 1500 sx Premium Cement + additives, circulate cement to surface.

**4 1/2" Production**

Set 12400' of 4-1/2" P-110 11.6# LT&C casing. Cement first stage with lead of 200 sx Interfill H + additives and tail of 775 sx Permian Basin cement + additives. Cement second stage with lead of 1500 sx Interfill H + additives and tail of 150 sx Premium. Estimated top of cement 2250'.

2. Pressure control Equipment:

A 13-3/8" 5000 PSI working pressure B.O.P. consisting of one set of blind rams and one set of pipe rams and a 5000# annular type preventor. A choke manifold and 120 gallon accumulator with floor and remote operating stations and auxiliary power system. Rotating head below 6000'. A kelly cock will be installed and maintained in operable condition and a drill string safety valve in the open position will be available on the rig floor. BOP unit will be hydraulically operated. BOP will be nipped up on the 9 5/8" casing and will be operated at least once a day while drilling and the blind rams will be operated when out of hole during trips. No abnormal pressure or temperature is expected while drilling.

3. Proposed Mud Circulating System:

Depth 0-300'

Mud Wt: 8.4-8.6

Viscosity: 30-32

Fluid Loss: May lose Circ

Type: Mud Fresh water spud mud add paper to control seepage and high viscosity sweeps to clean hole.

Depth: 300' - 2550'

Mud Wt: 9.7 – 9.9

Viscosity: 28 - 29

Fluid Loss: May lose circ.

Type: Brine water. Add paper as needed to control seepage and add lime to control pH (9-10). Use high viscosity sweeps to clean hole.

**Cementing and Mud Details**  
**Cimarex Energy Co. of Colorado**  
**Savage No. 1**  
**Unit Letter I Section 23**  
**T24S – R26E Eddy County, NM**

Depth: 2550' - 8300'  
Mud Weight: 8.4 - 9.9  
Viscosity: 28 - 29  
Fluid Loss: NC  
Type: Fresh water. Paper for seepage. Lime for pH (9 - 9.5)

Depth: 8300' – 10000'  
Mud Wt: 8.45 - 8.9  
Viscosity: 28 - 29  
Fluid Loss: NC  
Type: Cut brine. Caustic for pH control.

Depth: 10000' – 12400'  
Mud Wt: 8.9 – 9.7  
Viscosity: 29 – 45  
Fluid Loss: NC  
Type: Cut Brine. Caustic for pH control.

Sufficient mud materials will be kept on location at all times in order to combat lost circulation or unexpected kicks. In order to run DSTs, open hole logs, and casing, the viscosity and water loss may have to be adjusted in order to meet these needs. Mud system monitoring equipment with derrick floor indicators and visual/audio alarms shall be installed and operative prior to drilling into the Wolfcamp formation. This equipment will remain in use until production casing is run and cemented.



**Cimarex Energy Co. of Colorado**

5215 North O'Connor Blvd. ♦ Suite 1500 ♦ Irving, TX 75039 ♦ (972) 401-3111 ♦ Fax (972) 443-6486

Mailing Address: P.O. Box 140907 ♦ Irving, TX 75014-0907

*A subsidiary of Cimarex Energy Co. ♦ A NYSE Listed Company ♦ "XEC"*

January 17, 2007

Oil Conservation Division  
District II Office  
1301 W. Grand Ave.  
Artesia, New Mexico 88210  
Attn: Mr. Bryan Arrant

Re: Statewide Rule 118  
Hydrogen Sulfide Gas Contingency Plan  
Proposed Savage No. 1 Well

Dear Mr. Arrant:

In accordance with NMAC 19.15.3.118 C. (1) governing the determination of the hydrogen sulfide concentration in gaseous mixtures in each of its operations, Cimarex Energy Co. of Colorado does not anticipate that there will be enough H<sub>2</sub>S from the surface to the Morrow formations to meet the OCD's minimum requirements for the submission of a contingency plan for the drilling and completion of the following test(s):

Savage No. 1  
1980' FSL & 660' FEL  
Section 23-24S-26E  
Eddy County, NM

If anything further is needed regarding this issue, or if you have any questions, please feel free to contact the undersigned at 972-443-6489.

Yours truly,

A handwritten signature in dark ink that reads "Zeno Farris". The signature is written in a cursive, flowing style.

Zeno Farris  
Manager, Operations Administration