

District I  
1625 N. French Dr., Hobbs, NM 88240  
District II  
1301 W. Grand Avenue, Artesia, NM 88210  
District III  
1000 Rio Brazos Road, Aztec, NM 87410  
District IV  
1220 S. St. Francis Dr., Santa Fe, NM 87505

State of New Mexico  
Energy Minerals and Natural Resources  
Oil Conservation Division  
1220 South St. Francis Dr.  
Santa Fe, NM 87505

Form C-14  
March 12, 2004

For drilling and production facilities, submit to appropriate NMOCD District Office.  
For downstream facilities, submit to Santa Fe office

**Pit or Below-Grade Tank Registration or Closure**

Is pit or below-grade tank covered by a "general plan"? Yes  No

Type of action: Registration of a pit or below-grade tank  Closure of a pit or below-grade tank

Operator: **Marbob Energy Corporation**

Telephone: **505-748-3303**

e-mail address: **land2@marbob.com**

Address: **PO Box 227, Artesia, NM 88211-0227**

Facility or well name: **Double Trouble Federal Com #1**

API #: **30-015-33931**

U/L or Qtr/Qtr **NENE Sec 3 T 21S R 25E**

County: **Eddy**

Latitude \_\_\_\_\_ Longitude \_\_\_\_\_

NAD: 1927  1983  Surface Owner Federal  State  Private  Indian

**Pit**  
Type: Drilling  Production  Disposal   
Workover  Emergency   
Lined  Unlined   
Liner type: Synthetic  Thickness **12** mil Clay  Volume \_\_\_\_\_ bbl

**Below-grade tank**  
Volume: \_\_\_\_\_ bbl Type of fluid: \_\_\_\_\_  
Construction material: \_\_\_\_\_  
Double-walled, with leak detection? Yes  If not, explain why not.  
**RECEIVED**  
**AUG 03 2005**  
**OCD-ARTESIA**

Depth to ground water (vertical distance from bottom of pit to seasonal high water elevation of ground water.)	Less than 50 feet	(20 points)	
	<b>50 feet or more, but less than 100 feet</b>	(10 points)	
	100 feet or more	( 0 points)	<b>10 points</b>
Wellhead protection area: (Less than 200 feet from a private domestic water source, or less than 1000 feet from all other water sources.)	Yes	(20 points)	
	<b>No</b>	( 0 points)	<b>0 points</b>
Distance to surface water: (horizontal distance to all wetlands, playas, irrigation canals, ditches, and perennial and ephemeral watercourses.)	Less than 200 feet	(20 points)	
	200 feet or more, but less than 1000 feet	(10 points)	
	<b>1000 feet or more</b>	( 0 points)	<b>0 points</b>
<b>Ranking Score (Total Points)</b>			<b>10 points</b>

**If this is a pit closure:** (1) attach a diagram of the facility showing the pit's relationship to other equipment and tanks. (2) Indicate disposal location: onsite  offsite  If offsite, name of facility \_\_\_\_\_ (3) Attach a general description of remedial action taken including remediation start date and end date. (4) Groundwater encountered: No  Yes  If yes, show depth below ground surface \_\_\_\_\_ ft. and attach sample results. (5) Attach soil sample results and a diagram of sample locations and excavations.

I hereby certify that the information above is true and complete to the best of my knowledge and belief. I further certify that the above-described pit or below-grade tank has been/will be constructed or closed according to NMOCD guidelines , a general permit , or an (attached) alternative OCD-approved plan .

Date: **August 3, 2005**

Printed Name/Title: **Gerald Herrera**

Signature *G. Herrera*

Your certification and NMOCD approval of this application/closure does not relieve the operator of liability should the contents of the pit or tank contaminate ground water or otherwise endanger public health or the environment. Nor does it relieve the operator of its responsibility for compliance with any other federal, state, or local laws and/or regulations.

Approval:

Date: **8/2/05**

Printed Name/Title **Mike Beutcher JST II** Signature *Mike Beutcher*

Marbob Energy Corporation  
Attachment to OCD Form C-144

Pit or Below-Grade Tank Registration or Closure

Pit Closure

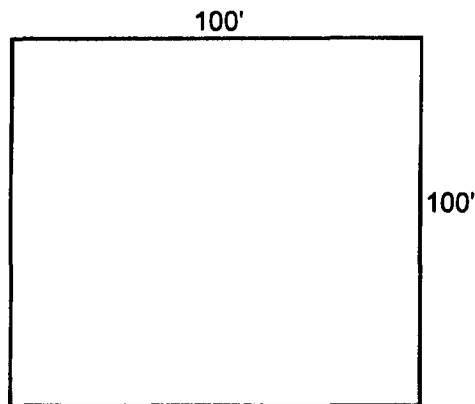
**Double Trouble Federal Com #1**

940' FNL & 791' FEL

Section 3 - T21S - R25E

Eddy County, New Mexico

(1) Facility diagram



(2) Disposal location:

*Fluids will be disposed at an approved disposal facility.*

(3) General description of remedial action:

- a. *Stir drill cuttings to stiffen.*
- b. *Dig disposal pit in shallow side of pit.*
- c. *Line pits with 12 mil plastic.*
- d. *Transfer drill cuttings into lined pit.*
- e. *Cap with 20 mil liner*
- e. *Cover with 3' of cover dirt.*
- f. *Re-seed to BLM requirements.*

(4) Groundwater encountered:

No

(5) Soil sample:

N/A

DISTRICT I  
1625 N. FRENCH DR., HOBBBS, NM 86240

DISTRICT II  
1301 W. GRAND AVENUE, ARTESIA, NM 88210

DISTRICT III  
1000 Rio Brazos Rd., Aztec, NM 87410

DISTRICT IV  
1220 S. ST. FRANCIS DR., SANTA FE, NM 87505

State of New Mexico  
Energy, Minerals and Natural Resources Department

COPY

Form C-102  
Revised JUNE 10, 2003  
Submit to Appropriate District Office  
State Lease - 4 Copies  
Fee Lease - 3 Copies

OIL CONSERVATION DIVISION  
1220 SOUTH ST. FRANCIS DR.  
Santa Fe, New Mexico 87505

WELL LOCATION AND ACREAGE DEDICATION PLAT

AMENDED REPORT

API Number <b>30-015-33931</b>		Pool Code	Pool Name
Property Code	Property Name <b>DOUBLE TROUBLE FEDERAL</b>		Well Number <b>1</b>
OGRID No.	Operator Name <b>MARBOB ENERGY CORPORATION</b>		Elevation <b>3298'</b>

Surface Location

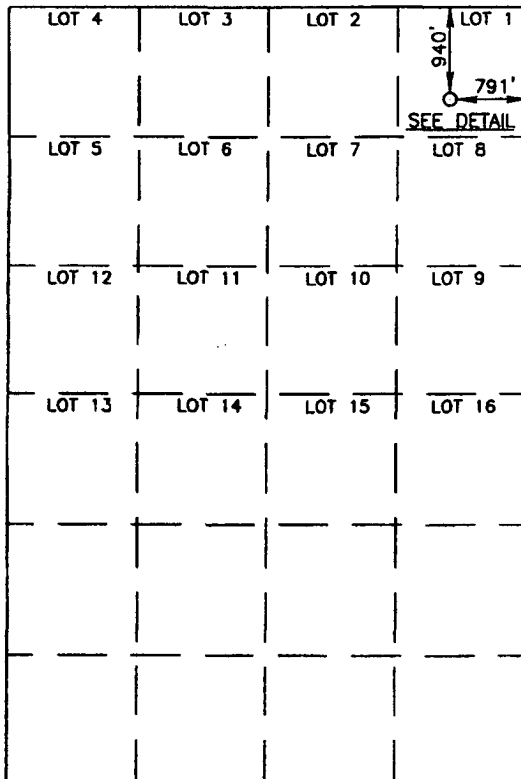
UL or lot No.	Section	Township	Range	Lot Idn	Feet from the	North/South line	Feet from the	East/West line	County
1	3	21-S	25-E		940	NORTH	791	EAST	EDDY

Bottom Hole Location If Different From Surface

UL or lot No.	Section	Township	Range	Lot Idn	Feet from the	North/South line	Feet from the	East/West line	County

Dedicated Acres	Joint or Infill	Consolidation Code	Order No.

NO ALLOWABLE WILL BE ASSIGNED TO THIS COMPLETION UNTIL ALL INTERESTS HAVE BEEN CONSOLIDATED OR A NON-STANDARD UNIT HAS BEEN APPROVED BY THE DIVISION

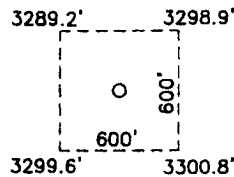


GEODETTIC COORDINATES  
NAD 27 NME

Y=552835.3 N  
X=486701.7 E

LAT.=32°31'11.45" N  
LONG.=104°22'35.32" W

DETAIL



SCALE - 1"=2000'

OPERATOR CERTIFICATION

I hereby certify the the information contained herein is true and complete to the best of my knowledge and belief.

Signature

Printed Name

Title

Date

SURVEYOR CERTIFICATION

I hereby certify that the well location shown on this plat was plotted from field notes of actual surveys made by me or under my supervision and that the same is true and correct to the best of my belief.

OCTOBER 5, 2004

Date Surveyed LA

Signature & Seal of Professional Surveyor

*Gary A. Edson* 10/6/04  
04.11.1291

Certificate No. GARY EDSON 12641