

Submit to Appropriate District Office
State Lease - 6 copies
Fee Lease - 5

State of New Mexico
Energy, Minerals and Natural Resources

Form C-105
Revised June 10, 2003

District I
1625 N. Fre... Hobbs, NM 88240
District II
1301 W. Grand Avenue, Artesia, NM 88210
District III
1000 Rio Brazos Rd., Aztec, NM 87410
District IV
1220 S. St. Francis Dr., Santa Fe, NM 87505

OIL CONSERVATION DIVISION
1220 South St. Francis Dr.
Santa Fe, NM 87505

WELL API NO.

30-015-34917

5. Indicate Type Of Lease
STATE ☒ FEE ☐

6. State Oil & Gas Lease No.

WELL COMPLETION OR RECOMPLETION REPORT AND LOG

1a. Type of Well:
OIL WELL ☐ GAS WELL ☒ DRY ☐ OTHER _____

b. Type of Completion:
NEW WELL ☒ WORK OVER ☐ DEEPEN ☐ PLUG BACK ☐ DIFF. RESVR. ☐ OTHER _____

2. Name of Operator
PARALLEL PETROLEUM CORPORATION

3. Address of Operator
1004 N BIG SPRING, SUITE 400, MIDLAND TX 79701

4. Well Location

Unit Letter 1 : 300 Feet From The NORTH Line and 742 Feet From The WEST Line

Section 30 Township 18S Range 23E NMPM EDDY County

10. Date Spudded 07-18-2006 11. Date T.D. Reached 08-13-2006 12. Date Compl. (Ready to Prod.) 11-16-2006 13. Elevations (DF & RKB, RT, GR, etc.) GR: 4067 14. Elev. Casinghead

15. Total Depth 8865 16. Plug Back T.D. 8824 17. If Multiple Compl. How Many Zones? 18. Intervals Drilled By 19. Rotary Tools X 20. Cable Tools

19. Producing Interval(s), of this completion - Top, Bottom, Name 4810 - 8403 TD; 4367 - 4380 TVD 20. Was Directional Survey Made YES

21. Type Electric and Other Logs Run NO LOGS RUN 22. Was Well Cored NO

23. CASING RECORD (Report all strings set in well)

CASING SIZE	WEIGHT LB./FT.	DEPTH SET	HOLE SIZE	CEMENTING RECORD	AMOUNT PULLED
COND: 20"		80			
9.625	36	1400	12.25	930 SX	
5.5	17	8865	7.875	1300 SX	

24. LINER RECORD

SIZE	TOP	BOTTOM	SACKS CEMENT	SCREEN	SIZE	DEPTH SET	PACKER SET
					2-7/8	SN @ 5240	NA

26. Perforation record (interval, size, and number)

4810 - 5697; 5900 - 6693; 7000 - 7603; 7800 - 8403
0.42" DIAMETER, 144 HOLES TOTAL

27. ACID, SHOT, FRACTURE, CEMENT, SQUEEZE, ETC.

DEPTH INTERVAL	AMOUNT AND KIND MATERIAL USED
4810 - 8403 MD	15,800 BBL FRESH WATER, 657TON CO2
4367 - 4380 TVD	333600# PROPPANT

28. PRODUCTION

Date First Production 11-16-2006 Production Method (Flowing, gas lift, pumping - Size and type pump) FLOWING Well Status (Prod. or Shut-in) PROD

Date of Test 11-16-2006 Hours Tested 24 HOUR Choke Size 32/64 Prod'n For Test Period Oil - Bbl. Gas - MCF 471 Water - Bbl. 70 Gas - Oil Ratio

Flow Tubing Press. 225 Casing Pressure 450 Calculated 24-Hour Rate Oil - Bbl. Gas - MCF 471 Water - Bbl. 70 Oil Gravity - API -(Corr.)

29. Disposition of Gas (Sold, used for fuel, vented, etc.) SOLD Test Witnessed By

30. List Attachments

31. I hereby certify that the information shown on both sides of this form is true and complete to the best of my knowledge and belief

Signature Kaye M McCormick Printed Name KAYE MC CORMICK Title SR PROD & REG TECH Date 03-26-2007
E-mail address kmccormick@plll.com

INSTRUCTIONS

This form is to be filed with the appropriate District Office of the Division not later than 20 days after the completion of any newly-drilled or deepened well. It shall be accompanied by one copy of all electrical and radio-activity logs run on the well and a summary of all special tests conducted, including drill stem tests. All depths reported shall be measured depths. In the case of directionally drilled wells, true vertical depths shall also be reported. For multiple completions, Items 25 through 29 shall be reported for each zone. The form is to be filed in quintuplicate except on state land, where six copies are required. See Rule 1105.

INDICATE FORMATION TOPS IN CONFORMANCE WITH GEOGRAPHICAL SECTION OF STATE

Southeastern New Mexico		Northeastern New Mexico	
T. Anhy	T. Canyon	T. Ojo Alamo	T. Penn. "B"
T. Salt	T. Strawn	T. Kirtland-Fruitland	T. Penn. "C"
B. Salt	T. Atoka	T. Pictured Cliffs	T. Penn. "D"
T. Yates	T. Miss	T. Cliff House	T. Leadville
T. 7 Rivers	T. Devonian	T. Menefee	T. Madison
T. Queen	T. Silurian	T. Point Lookout	T. Elbert
T. Grayburg	T. Montoya	T. Mancos	T. McCracken
T. San Andres	T. Simpson	T. Gallup	T. Ignacio Otzte
T. Glorieta	T. McKee	Base Greenhorn	T. Granite
T. Paddock	T. Ellenburger	T. Dakota	T.
T. Blinbry	T. Gr. Wash	T. Morrison	T.
T. Tubb	T. Delaware Sand	T. Todilto	T.
T. Drinkard	T. Bone Springs	T. Entrada	T.
T. Abo	T.	T. Wingate	T.
T. Wolfcamp		T. Chinle	T.
T. Penn	T.	T. Permian	T.
T. Cisco (Bough C)	T.	T. Penn "A"	T.

OIL OR GAS SANDS OR ZONES

No. 1, from to
No. 2, from to
No. 3, from to
No. 4, from to

IMPORTANT WATER SANDS

Include data on rate of water inflow and elevation to which water rose in hole.

No. 1, from to feet

No. 2, from to feet

No. 3, from to feet

LITHOLOGY RECORD (Attach additional sheet if necessary)

From	To	Thickness in Feet	Lithology

From	To	Thickness in Feet	Lithology

District I
1625 N. French Dr., Hobbs, NM 88240
District II
1301 W. Grand Avenue, Artesia, NM 88210
District III
1000 Rio Brazos Rd., Aztec, NM 87410
District IV
1220 S. St. Francis Dr., Santa Fe, NM 87505

State of New Mexico
Energy, Minerals & Natural Resources Department
OIL CONSERVATION DIVISION
1220 South St. Francis Dr.
Santa Fe, NM 87505

Form C-102
Revised October 12, 2005
Submit to Appropriate District Office
State Lease - 4 Cents
Fee Lease - 2 Cents
☐ AMENDED REPORT

Month - Year
MAR 28 2007
100 - ARTESIA, NM

WELL LOCATION AND ACREAGE DEDICATION PLAT

1 APT Number 30-015-34917		2 Pool Code		3 Well Name FOUR MILE DRAW, WOLFCAMP	
4 Property Code 35788		5 Property Name CHATTER BOX 1823-19 STATE COME			6 Well Number 1
7 OGRID No. 230387		8 Operator Name PARALLEL PETROLEUM CORPORATION			9 Elevation 4067

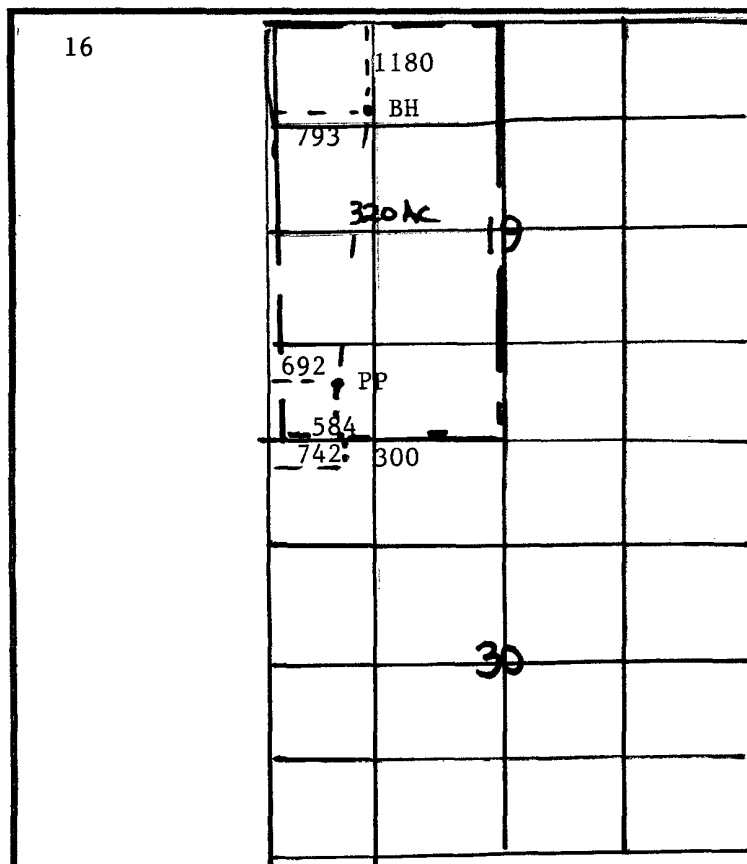
10 Surface Location

UL or lot no. 1	Section 30	Township 18S	Range 23E	Lot Idn	Feet from the 300	North/South line NORTH	Feet from the 742	East/West line WEST	County EDDY
---------------------------	----------------------	------------------------	---------------------	---------	-----------------------------	----------------------------------	-----------------------------	-------------------------------	-----------------------

11 Bottom Hole Location If Different From Surface

UL or lot no. 1	Section 19	Township 18S	Range 23E	Lot Idn	Feet from the 1180	North/South line NORTH	Feet from the 793	East/West line WEST	County EDDY
12 Dedicated Acres 320		13 Joint or Infill		14 Consolidation Code		15 Order No.			

No allowable will be assigned to this completion until all interests have been consolidated or a non-standard unit has been approved by the division.



17 OPERATOR CERTIFICATION

I hereby certify that the information contained herein is true and complete to the best of my knowledge and belief, and that this organization either owns a working interest or unleased mineral interest in the land including the proposed bottom hole location or has a right to drill this well at this location pursuant to a contract with an owner of such a mineral or working interest, or to a voluntary pooling agreement or a compulsory pooling order heretofore entered by the division.

Kaye McCormick 3-26-2007
Signature Date

KAYE MC CORMICK
Printed Name

18 SURVEYOR CERTIFICATION

I hereby certify that the well location shown on this plat was plotted from field notes of actual surveys made by me or under my supervision, and that the same is true and correct to the best of my belief.

Date of Survey
Signature and Seal of Professional Surveyor:

Certificate Number

District I
1625 N. French Dr., Hobbs, NM 88240
District II
1301 W Grand Avenue, Artesia, NM 88210
District III
1000 Rio Brazos Rd., Aztec, NM 87410
District IV
1220 S. St. Francis Dr., Santa Fe, NM 87505

State of New Mexico
Energy, Minerals & Natural Resources

OIL CONSERVATION DIVISION
1220 South St. Francis Dr.
Santa Fe, NM 87505

Revised 10, 2003

Submit to Appropriate District Office
5 Copies

Month - Year
MAR 28 2007
OCD - ARTESIA, NM

☐ AMENDED REPORT

I. REQUEST FOR ALLOWABLE AND AUTHORIZATION TO TRANSPORT

¹ Operator name and Address PARALLEL PETROLEUM CORPORATION 1004 N BIG SPRING, SUITE 400 MIDLAND, TX 79701		² OGRID Number 230387
⁴ API Number 30-0 15-34917	⁵ Pool Name FOUR MILE DRAW, WOLF CAMP	⁶ Pool Code
⁷ Property Code 35788	⁸ Property Name CHATTER BOX 1823-19 STATE COM	⁹ Well Number 1

II. ¹⁰ Surface Location

UL or lot no.	Section	Township	Range	Lot. Idn	Feet from the	North/South Line	Feet from the	East/West line	County
1	30	18S	23E	1	300	NORTH	742	WEST	EDDY

¹¹ Bottom Hole Location

UL or lot no.	Section	Township	Range	Lot. Idn	Feet from the	North/South Line	Feet from the	East/West line	County
1	19	18S	23E		1180	NORTH	793	WEST	EDDY
¹² Lse Code	¹³ Producing Method Code	¹⁴ Gas Connection Date	¹⁵ C-129 Permit Number	¹⁶ C-129 Effective Date	¹⁷ C-129 Expiration Date				
		11-16-2006							

III. Oil and Gas Transporters

¹⁸ Transporter OGRID	¹⁹ Transporter Name and Address	²⁰ POD	²¹ O/G	²² POD ULSTR Location and Description
36785	DCP MIDSTRAM LP 3000 N 'A', BLDG 7 MIDLAND, TX 79705		G	SEC 30, T18S, R23E

IV. Produced Water

²³ POD	²⁴ POD ULSTR Location and Description

V. Well Completion Data

²⁵ Spud Date	²⁶ Ready Date	²⁷ TD	²⁸ PBTD	²⁹ Perforations	³⁰ DHC, MC
07-18-2006	11-16-2006	8865	8824	4810 8403 MD	
³¹ Hole Size	³² Casing & Tubing Size	³³ Depth Set	³⁴ Sacks Cement		
12.25	9.625	1400	930 SX		
7.875	5.5	8865	1300 SX		
	2-7/8 TBG	SN @ 5240			

VI. Well Test Data

³⁵ Date New Oil	³⁶ Gas Delivery Date	³⁷ Test Date	³⁸ Test Length	³⁹ Tbg. Pressure	⁴⁰ Csg. Pressure
	11-16-2006	11-16-2006	24 HOUR	225	450
⁴¹ Choke Size	⁴² Oil	⁴³ Water	⁴⁴ Gas	⁴⁵ AOF	⁴⁶ Test Method
32/64		70	471		FLOWING

⁴⁷ I hereby certify that the rules of the Oil Conservation Division have been complied with and that the information given above is true and complete to the best of my knowledge and belief.

Signature: *Kaye McCormick*

Printed name:
KAYE MC CORMICK

Title:
SR PROD & REG TECH

Email:
kmccormick@plll.com

Date:
03-26-2007

Phone:
432-685-6563

OIL CONSERVATION DIVISION

Approved by:

BRYAN G. ARANT
DISTRICT II GEOLOGIST

Approval Date:

MAR 28 2007