

30-015-35360

**CONTINGENCY PLAN****Chevron North America E&P, Co.****Neff 13, Federal #17, #18, #19**Section 13: T-22-S  
Eddy County, New Mexico**Prepared For:**  
**Date Prepared:****Chevron North America E&P, Co.**  
**April 23, 2007****Prepared By:****INDIAN**  
**Fire & Safety, Inc.**

## TABLE OF CONTENTS

### H2S CONTINGENCY PLAN

- 1. SCOPE..... 1
- 2. OBJECTIVE..... 1
- 3. DISCUSSION OF PLAN..... 2

### EMERGENCY PROCEDURES

- 1. EMERGENCY REACTION STEPS..... 3-5

### IGNITION PROCEDURES

- 1. RESPONSIBILITY..... 6
- 2. INSTRUCTIONS FOR IGNITING THE WELL..... 7

### TRAINING PROGRAM

- 1. TRAINING REQUIREMENTS..... 8

### EMERGENCY EQUIPMENT REQUIREMENTS..... 9-11

### CHECK LISTS

- 1. STATUS CHECK LIST..... 12
- 2. PROCEDURAL CHECK LIST..... 13

### EVACUATION PLAN..... 14

- 1. EMERGENCY ACTIONS..... 15
- 2. PHONE LIST - GOVERNMENT AGENCIES..... 16
- 3. PHONE LIST - COMPANY CONTACTS..... 16 a-b

### MAPS & PLATS

- 1. MAP OF WELLSITE & PUBLIC WITHIN  
RADIUS OF EXPOSURE..... 17

### GENERAL INFORMATION

- 1. 100 PPM RADIUS CHART..... 18
- 2. 500 PPM RADIUS CHART..... 19
- 3. TOXIC EFFECTS OF HYDROGEN SULFIDE POISONING... 20-21
- 4. USE OF SELF-CONTAINED BREATHING EQUIPMENT..... 22-23
- 5. RESCUE - FIRST AID FOR H2S POISONING..... 24



## HYDROGEN SULFIDE CONTINGENCY PLAN

### SCOPE

THIS CONTINGENCY PLAN ESTABLISHES GUIDELINES FOR THE PUBLIC, ALL COMPANY EMPLOYEES WHO'S WORK ACTIVITIES MAY INVOLVE EXPOSURE TO HYDROGEN SULFIDE (H<sub>2</sub>S) GAS.

### OBJECTIVE

1. PREVENT ANY AND ALL ACCIDENTS, AND PREVENT THE UNCONTROLLED RELEASE OF HYDROGEN SULFIDE INTO THE ATMOSPHERE.
2. PROVIDE PROPER EVACUATION PROCEDURES TO COPE WITH EMERGENCIES.
3. PROVIDE IMMEDIATE AND ADEQUATE MEDICAL ATTENTION SHOULD AN INJURY OCCUR.

## H2S CONTINGENCY PLAN

DISCUSSION

## GEOLOGICAL PROGNOSIS

IMPLEMENTATION:	THIS PLAN WITH ALL DETAILS IS TO BE FULLY IMPLEMENTED BEFORE DRILLING TO <u>PRODUCTION CASING POINT</u> .
EMERGENCY RESPONSE PROCEDURE:	THIS SECTION OUTLINES THE CONDITIONS AND DENOTES STEPS TO BE TAKEN IN THE EVENT OF AN EMERGENCY.
EMERGENCY EQUIPMENT PROCEDURE:	THIS SECTION OUTLINES THE SAFETY AND EMERGENCY EQUIPMENT THAT WILL BE REQUIRED FOR THE DRILLING OF THIS WELL.
TRAINING PROVISIONS:	THIS SECTION OUTLINES THE TRAINING PROVISIONS THAT MUST BE ADHERED TO PRIOR TO DRILLING <u>TO PRODUCTION CASING POINT</u> .
DRILLING EMERGENCY CALL LISTS:	INCLUDED ARE THE TELEPHONE NUMBERS OF ALL PERSONS TO BE CONTACTED SHOULD AN EMERGENCY EXIST.
BRIEFING:	THIS SECTION DEALS WITH THE BRIEFING OF ALL PEOPLE INVOLVED IN THE DRILLING OPERATION.
PUBLIC SAFETY:	PUBLIC SAFETY PERSONNEL WILL BE MADE AWARE OF THE DRILLING OF THIS WELL.
CHECK LISTS:	STATUS CHECK LISTS AND PROCEDURAL CHECK LISTS HAVE BEEN INCLUDED TO INSURE ADHERENCE TO THE PLAN.
GENERAL INFORMATION:	A GENERAL INFORMATION SECTION HAS BEEN INCLUDED TO SUPPLY SUPPORT INFORMATION.

## H2S CONTINGENCY PLAN

**EMERGENCY PROCEDURES**

- A. IN THE EVENT OF ANY EVIDENCE OF H2S LEVEL ABOVE 10 PPM, TAKE THE FOLLOWING STEPS:
1. SECURE BREATHING EQUIPMENT.
  2. ORDER NON-ESSENTIAL PERSONNEL OUT OF DANGER ZONE.
  3. TAKE STEPS TO DETERMINE IF THE H2S LEVEL CAN BE CORRECTED OR SUPPRESSED AND, IF SO, PROCEED IN NORMAL OPERATION.
- B. IF UNCONTROLLABLE CONDITIONS OCCUR:
1. TAKE STEPS TO PROTECT AND/OR REMOVE ANY PUBLIC IN THE DOWN-WIND AREA FROM THE RIG - PARTIAL EVACUATION AND ISOLATION. NOTIFY NECESSARY PUBLIC SAFETY PERSONNEL AND THE BUREAU OF LAND MANAGEMENT OF THE SITUATION.
  2. REMOVE ALL PERSONNEL TO SAFE BREATHING AREA.
  3. NOTIFY PUBLIC SAFETY PERSONNEL TO SAFE BREATHING AREA.
  4. PROCEED WITH BEST PLAN (AT THE TIME) TO REGAIN CONTROL OF THE WELL. MAINTAIN TIGHT SECURITY AND SAFETY PROCEDURES.
- C. RESPONSIBILITY:
1. DESIGNATED PERSONNEL.
    - a. SHALL BE RESPONSIBLE FOR THE TOTAL IMPLEMENTATION OF THIS PLAN.
    - b. SHALL BE IN COMPLETE COMMAND DURING ANY EMERGENCY.
    - c. SHALL DESIGNATE A BACK-UP.

**EMERGENCY PROCEDURES**

\*(Procedures are the same for both Drilling and Tripping)

**ALL PERSONNEL:**

1. ON ALARM, DON ESCAPE UNIT AND REPORT IN UP WIND BRIEFING AREA.
2. CHECK STATUS OF PERSONNEL (BUDDY SYSTEM).
3. SECURE BREATHING EQUIPMENT.
4. AWAIT ORDERS FROM SUPERVISOR.

**DRILLING FOREMAN:**

1. REPORT TO UP WIND BRIEFING AREA.
2. DON BREATHING EQUIPMENT AND RETURN TO POINT OF RELEASE WITH TOOL PUSHER OR DRILLER (BUDDY SYSTEM).
3. DETERMINE H<sub>2</sub>S CONCENTRATIONS.
4. ASSESS SITUATION AND TAKE CONTROL MEASURES.

**TOOL PUSHER:**

1. REPORT TO UP WIND BRIEFING AREA.
2. DON BREATHING EQUIPMENT AND RETURN TO POINT OF RELEASE WITH DRILLING FOREMAN OR DRILLER (BUDDY SYSTEM).
3. DETERMINE H<sub>2</sub>S CONCENTRATION.
4. ASSESS SITUATION AND TAKE CONTROL MEASURES.

**DRILLER:**

1. DON ESCAPE UNIT.
2. CHECK MONITOR FOR POINT OF RELEASE.
3. REPORT TO BRIEFING AREA.
4. CHECK STATUS OF PERSONNEL (IN AN ATTEMPT TO RESCUE, USE THE BUDDY SYSTEM).
5. ASSIGNS LEAST ESSENTIAL PERSON TO NOTIFY DRILLING FOREMAN AND TOOL PUSHER BY QUICKEST MEANS IN CASE OF THEIR ABSENCE.
6. ASSUMES THE RESPONSIBILITIES OF THE DRILLING FORMAN AND TOOL PUSHER UNTIL THEY ARRIVE SHOULD THEY BE ABSENT.

**EMERGENCY PROCEDURES**

DERRICK MAN  
FLOOR MAN #1  
FLOOR MAN #2

1. WILL REMAIN IN BRIEFING AREA UNTIL INSTRUCTED BY SUPERVISOR.

MUD ENGINEER:

1. REPORT TO BRIEFING AREA.
2. WHEN INSTRUCTED, BEGIN CHECK OF MUD FOR PH AND H2S LEVEL. (GARETT GAS TRAIN.)

SAFETY PERSONNEL:

1. MASK UP AND CHECK STATUS OF ALL PERSONNEL AND SECURE OPERATIONS AS INSTRUCTED BY DRILLING FOREMAN AND REPORT TO BRIEFING AREA.

**TAKING A KICK**

WHEN TAKING A KICK DURING AN H2S EMERGENCY, ALL PERSONNEL WILL FOLLOW STANDARD BOP PROCEDURES AFTER REPORTING TO BRIEFING AREA AND MASKING UP.

**OPEN-HOLE LOGGING**

ALL UNNECESSARY PERSONNEL OFF FLOOR. DRILLING FOREMAN AND SAFETY PERSONNEL SHOULD MONITOR CONDITION, ADVISE STATUS AND DETERMINE NEED FOR USE OF AID EQUIPMENT.

**RUNNING CASING OR PLUGGING**

FOLLOWING THE SAME "TRIPPING" PROCEDURE AS ABOVE. DRILLING FOREMAN AND SAFETY PERSONNEL SHOULD DETERMINE IF ALL PERSONNEL HAVE ACCESS TO PROTECTIVE EQUIPMENT.



## H2S CONTINGENCY PLAN

### IGNITION PROCEDURES

THE DECISION TO IGNITE THE WELL IS THE RESPONSIBILITY OF COMPANY FOREMAN. IN THE EVENT HE IS INCAPACITATED, IT BECOMES THE RESPONSIBILITY OF THE CONTRACT RIG TOOL PUSHER. THE DECISION SHOULD BE MADE ONLY AS A LAST RESORT AND IN A SITUATION WHERE IT IS CLEAR THAT:

1. HUMAN LIFE AND PROPERTY ARE ENDANGERED.
2. THERE IS NO HOPE CONTROLLING THE BLOWOUT UNDER THE PREVAILING CONDITIONS AT THE WELL.

NOTIFY THE DISTRICT OFFICE IF TIME PERMITS, BUT DO NOT DELAY IF HUMAN LIFE IS IN DANGER.

INITIATE FIRST PHASE OF EVACUATION PLAN.

## **IGNITION PROCEDURES**

### **INSTRUCTIONS FOR IGNITING THE WELL**

1. TWO PEOPLE ARE REQUIRED FOR THE ACTUAL IGNITING OPERATION. THEY MUST WEAR SELF-CONTAINED BREATHING UNITS AND HAVE SAFETY ROPE ATTACHED. ONE MAN (TOOL PUSHER OR SAFETY ENGINEER) WILL CHECK THE ATMOSPHERE FOR EXPLOSIVE GASES WITH THE EXPLOSIMETER. THE OTHER MAN (DRILLING FOREMAN) IS RESPONSIBLE FOR IGNITING THE WELL.
2. PRIMARY METHOD TO IGNITE: 25 MM FLARE GUN WITH RANGE OF APPROXIMATELY 500 FEET.
3. IGNITE UP WIND AND DO NOT APPROACH ANY CLOSER THAN IS WARRANTED.
4. SELECT THE IGNITION SITE BEST FOR PROTECTION, AND WHICH OFFERS AN EASY ESCAPE ROUTE.
5. BEFORE FIRING, CHECK FOR PRESENCE OF COMBUSTIBLE GAS.
6. AFTER LIGHTING, CONTINUE EMERGENCY ACTION AND PROCEDURE AS BEFORE.
7. ALL UNASSIGNED PERSONNEL WILL LIMIT THEIR ACTIONS TO THOSE DIRECTED BY THE DRILLING FOREMAN.

**REMEMBER:** AFTER WELL IS IGNITED, BURNING HYDROGEN SULFIDE WILL CONVERT TO SULFUR DIOXIDE, WHICH IS ALSO HIGHLY TOXIC. **DO NOT ASSUME THE AREA IS SAFE AFTER THE WELL IS IGNITED.**

## H2S CONTINGENCY PLAN

### TRAINING REQUIREMENTS

WHEN WORKING IN AN AREA WHERE HYDROGEN SULFIDE GAS (H2S) MIGHT BE ENCOUNTERED, DEFINITE TRAINING REQUIREMENTS MUST BE CARRIED OUT. ALL COMPANIES WILL INSURE THAT ALL PERSONNEL AT THE WELL SITE WILL HAVE HAD ADEQUATE TRAINING IN THE FOLLOWING:

1. HAZARDS AND CHARACTERISTICS OF H2S.
2. PHYSICAL EFFECTS OF HYDROGEN SULFIDE ON THE HUMAN BODY.
3. TOXICITY OF HYDROGEN SULFIDE AND SULFUR DIOXIDE.
4. H2S DETECTION.
5. EMERGENCY RESCUE.
6. RESUSCITATORS.
7. FIRST AID AND ARTIFICIAL RESPIRATION.
8. EFFECTS OF H2S ON METALS.
9. LOCATION SAFETY.

### SERVICE COMPANY AND VISITING PERSONNEL

- A. EACH SERVICE COMPANY THAT WILL BE ON THIS WELL WILL BE NOTIFIED IF THE ZONE CONTAINS H2S.
- B. EACH SERVICE COMPANY MUST PROVIDE FOR THE TRAINING AND EQUIPMENT OF THEIR EMPLOYEES BEFORE THEY ARRIVE AT THE WELL SITE.
- C. EACH SERVICE COMPANY WILL BE EXPECTED TO ATTEND A WELL SITE BRIEFING.

## H2S CONTINGENCY PLAN

### EMERGENCY EQUIPMENT REQUIREMENTS

#### 1. SIGNS

- A. ONE SIGN LOCATED AT LOCATION ENTRANCE WITH THE FOLLOWING LANGUAGE:

(LEASE)  
**CAUTION – POTENTIAL POISON GAS  
HYDROGEN SULFIDE  
NO ADMITTANCE WITHOUT AUTHORIZATION**

#### 2. WIND SOCK – WIND STREAMERS

- A. ONE 36" (IN LENGTH) WIND SOCK LOCATED AT PROTECTION CENTER, AT HEIGHT VISIBLE FROM RIG FLOOR.  
B. ONE 36" (IN LENGTH) WIND SOCK LOCATED AT HEIGHT VISIBLE FROM PIT AREAS.

#### 3. HYDROGEN SULFIDE DETECTOR AND ALARMS

- A. H2S MONITORS WITH ALARMS WILL BE LOCATED ON THE RIG FLOOR, AT THE BELL NIPPLE, AND AT THE FLOW LINE. THESE MONITORS WILL BE SET TO ALARM AT 10 PPM WITH RED LIGHT, AND TO ALARM AT 15 PPM WITH RED LIGHT AND AUDIBLE ALARM.  
B. HAND OPERATED DETECTORS WITH TUBES.  
C. H2S MONITOR TESTER.

#### 4. CONDITION FLAGS

- A. ONE EACH OF ORANGE, YELLOW, AND RED CONDITION FLAGS TO BE DISPLAYED TO DENOTE CONDITIONS.

**GREEN – NORMAL CONDITIONS  
YELLOW – POTENTIAL DANGER  
RED – DANGER, H2S PRESENT**

- B. CONDITION FLAG SHALL BE POSTED AT LOCATION SIGN ENTRANCE.

## H2S CONTINGENCY PLAN

EMERGENCY EQUIPMENT REQUIREMENTS5. AUXILIARY RESCUE EQUIPMENT

- A. STRETCHER
- B. 100' LENGTH OF 5/8" NYLON ROPE.

## 6. MUD INSPECTION DEVICES

GARRETT GAS TRAIN OR HACH TESTER FOR INSPECTION OF SULFIDE CONCENTRATION IN MUD SYSTEM.

## 7. FIRE EXTINGUISHER

ADEQUATE FIRE EXTINGUISHERS SHALL BE LOCATED AT STRATEGIC LOCATIONS.

## 8. BLOW OUT PREVENTION EQUIPMENT

THE WELL SHALL HAVE HYDRAULIC BOP EQUIPMENT FOR THE ANTICIPATED BHP OF 1500 PSI. EQUIPMENT IS TO BE TESTED ON INSTALLATION.

## 9. COMBUSTIBLE GAS DETECTOR

THERE SHALL BE ONE COMBUSTIBLE GAS DETECTOR ON LOCATION AT ALL TIMES.

## 10. BOP TESTING

BOP AND CHOKE LINE AND KILL LINE WILL BE TESTED.

## 11. AUDIO SYSTEM

RADIO COMMUNICATION WILL BE AVAILABLE AT THE RIG.

- A. RIG FLOOR OR TRAILER
- B. VEHICLE

## 12. SPECIAL CONTROL EQUIPMENT

- A. HYDRAULIC BOP EQUIPMENT WITH REMOTE CONTROL ON GROUND.
- B. ROTATING HEAD

## H2S CONTINGENCY PLAN

### EMERGENCY EQUIPMENT REQUIREMENTS

#### 13. EVACUATION PLAN

EVACUATION ROUTES SHOULD BE ESTABLISHED PRIOR TO SPUDDING EACH WELL AND DISCUSSED WITH ALL RIG PERSONNEL.

#### 14. DESIGNATED AREA

- A. PARKING AND VISITOR AREA: ALL VEHICLES ARE TO BE PARKED AT A PREDETERMINED SAFE DISTANCE FROM THE WELLHEAD. THIS WILL BE THE DESIGNATED SMOKING AREA.
- B. TWO BRIEFING AREAS ON EITHER SIDE OF THE LOCATION AT THE MAXIMUM ALLOWABLE DISTANCE FROM THE WELL BORE SO THEY OFFSET PREVAILING WINDS PERPENDICULARLY, OR AT A 45-DEGREE ANGLE IF WIND DIRECTION TENDS TO SHIFT IN THE AREA.
- C. PROTECTION CENTERS OR IF A MOVABLE TRAILER IS USED, IT SHOULD BE DEPT UPWIND OF EXISTING WINDS. WHEN WIND IS FROM THE PREVAILING DIRECTIONS, BOTH PROTECTION CENTERS SHOULD BE ACCESSIBLE.

## H2S CONTINGENCY PLAN

STATUS CHECK LIST

NOTE: ALL ITEMS ON THIS LIST MUST BE COMPLETED BEFORE DRILLING TO PRODUCTION CASING POINT.

1. SIGN AT LOCATION ENTRANCE.
2. TWO (2) WIND SOCKS LOCATED AS REQUIRED.
3. TWO (2) 30-MINUTE PRESSURE DEMAND AIR PACKS ON LOCATION FOR ALL RIG PERSONNEL AND MUD LOGGERS.
4. AIR PACK INSPECTED FOR READY USE.
5. CASCADE SYSTEM AND HOSE LINE HOOK-UP.
6. CASCADE SYSTEM FOR REFILLING AIR BOTTLES.
7. SAFE BREATHING AREAS SET UP.
8. CONDITION FLAG ON LOCATION AND READY FOR USE.
9. H2S DETECTION SYSTEM HOOKED UP.
10. H2S ALARM SYSTEM HOOKED UP AND READY.
11. OXYGEN RESUSCITATOR ON LOCATION AND TESTED FOR USE.
12. STRETCHER ON LOCATION AT SAFETY TRAILER.
13. 1 - 100' LENGTH OF NYLON ROPE ON LOCATION.
14. ALL RIG CREW AND SUPERVISORS TRAINED AS REQUIRED.
15. ALL OUTSIDE SERVICE CONTRACTORS ADVISED OF POTENTIAL H2S HAZARD ON WELL.
16. NO SMOKING SIGN POSTED.
17. HAND OPERATED H2S DETECTOR WITH TUBES ON LOCATION.

CHECKED BY: \_\_\_\_\_ DATE: \_\_\_\_\_ (12)

**H2S CONTINGENCY PLAN****PROCEDURAL CHECK LIST****PERFORM EACH TOUR:**

1. CHECK FIRE EXTINGUISHERS TO SEE THAT THEY HAVE THE PROPER CHARGE.
2. CHECK BREATHING EQUIPMENT TO ENSURE THAT IT HAS NOT BEEN TAMPERED WITH.
3. MAKE SURE ALL THE H2S DETECTION SYSTEM IS OPERATIVE.

**PERFORM EACH WEEK:**

1. CHECK EACH PIECE OF BREATHING EQUIPMENT TO MAKE SURE THAT DEMAND REGULATOR IS WORKING. THIS REQUIRES THAT THE BOTTLE BE OPENED AND THE MASK ASSEMBLY BE PUT ON TIGHT ENOUGH SO THAT WHEN YOU INHALE, YOU RECEIVE AIR.
2. BLOW OUT PREVENTER SKILLS.
3. CHECK SUPPLY PRESSURE ON BOP ACCUMULATOR STAND BY SOURCE.
4. CHECK ALL SKA-PAC UNITS FOR OPERATION: DEMAND REGULATOR, ESCAPE BOTTLE AIR VOLUMES, SUPPLY BOTTLE OF AIR VOLUME.
5. CHECK BREATHING EQUIPMENT MASK ASSEMBLY TO SEE THAT STRAPS ARE LOOSENEED AND TURNED BACK, READY TO PUT ON.
6. CHECK PRESSURE ON BREATHING EQUIPMENT AIR BOTTLES TO MAKE SURE THEY ARE CHARGED TO FULL VOLUME.
7. CONFIRM PRESSURE ON ALL SUPPLY AIR BOTTLES.
8. PERFORM BREATHING EQUIPMENT DRILLS WITH ON-SITE PERSONNEL.
9. CHECK THE FOLLOWING SUPPLIES FOR AVAILABILITY.
  - A. EMERGENCY TELEPHONE LIST.
  - B. HAND OPERATED H2S DETECTORS AND TUBES.



## H2S CONTINGENCY PLAN

### GENERAL EVACUATION PLAN

THE DIRECT LINES OF ACTION PREPARED BY INDIAN FIRE & SAFETY, INC. TO PROTECT THE PUBLIC FROM HAZARDOUS GAS SITUATIONS ARE AS FOLLOWS:

1. WHEN THE COMPANY APPROVED SUPERVISOR (DRILLING FOREMAN, CONSULTANT, RIG PUSHER, OR DRILLER) DETERMINES THE H2S GAS CANNOT BE LIMITED TO THE WELL LOCATION AND THE PUBLIC WILL BE INVOLVED, HE WILL ACTIVATE THE EVACUATION PLAN. ESCAPE ROUTES ARE NOTED ON AREA MAP.
2. "COMPANY MAN" OR DESIGNEE WILL NOTIFY LOCAL GOVERNMENT AGENCY THAT A HAZARDOUS CONDITION EXISTS AND EVACUATION NEEDS TO BE IMPLEMENTED.
3. COMPANY SAFETY PERSONNEL THAT HAVE BEEN TRAINED IN THE USE OF H2S DETECTION EQUIPMENT AND SELF-CONTAINED BREATHING EQUIPMENT WILL MONITOR H2S CONCENTRATIONS, WIND DIRECTIONS, AND AREA OF EXPOSURE. THEY WILL DELINEATE THE OUTER PERIMETER OF THE HAZARDOUS GAS AREA. EXTENSION TO THE EVACUATION AREA WILL BE DETERMINED FROM INFORMATION GATHERED.
4. LAW ENFORCEMENT PERSONNEL (STATE POLICE, POLICE DEPT., FIRE DEPT., AND SHERIFF'S DEPT.) WILL BE CALLED TO AID IN SETTING UP AND MAINTAINING ROAD BLOCKS. ALSO, THEY WILL AID IN EVACUATION OF THE PUBLIC IF NECESSARY.

**IMPORTANT:** LAW ENFORCEMENT PERSONNEL WILL NOT BE ASKED TO COME INTO A CONTAMINATED AREA. THEIR ASSISTANCE WILL BE LIMITED TO UNCONTAMINATED AREAS. CONSTANT RADIO CONTACT WILL BE MAINTAINED WITH THEM.

5. AFTER THE DISCHARGE OF GAS HAS BEEN CONTROLLED, COMPANY SAFETY PERSONNEL WILL DETERMINE WHEN THE AREA IS SAFE FOR RE-ENTRY.

## H2S CONTINGENCY PLAN

### EMERGENCY ACTIONS

#### WELL BLOWOUT – IF EMERGENCY

1. EVACUATE ALL PERSONNEL IF POSSIBLE.
2. IF SOUR GAS – EVACUATE RIG PERSONNEL.
3. IF SOUR GAS – EVACUATE PUBLIC WITHIN 3000 FT RADIUS OF EXPOSURE.
4. DON SCBA AND RESCUE.
5. CALL 911 FOR EMERGENCY HELP (FIRE DEPT AND AMBULANCE) AND NOTIFY SR. DRILLING FOREMAN AND DISTRICT FOREMAN.
6. GIVE FIRST AID.

#### PERSON DOWN LOCATION/FACILITY

1. IF IMMEDIATELY POSSIBLE, CONTACT 911. GIVE LOCATION AND WAIT FOR CONFIRMATION.
2. DON SCBA AND RESCUE.

## EMERGENCY PHONE LIST

### GOVERNMENTAL AGENCIES

<u>Eddy County Sheriff's Office</u>	911
Non emergency .....	505-746-9888
<u>Fire Departments</u>	911
Carlsbad – Non-emergency.....	505-885-2111
<u>BLM</u>	
Carlsbad .....	505-361-2822
<u>State Police Department</u>	911
Non-emergency .....	505-437-1313
<u>City of Carlsbad</u>	
.....	505-885-2111
<u>Ambulance</u>	911
Carlsbad – Non Emergency.....	505-885-2111
<u>Hospitals</u>	
Carlsbad .....	505-887-4100
<u>AEROCARE</u> .....	806-747-8923
<u>CHEMTREC</u> .....	1-800-424-9300
<u>OSHA</u>	
Lubbock TX .....	1-800-692-4204

**EMERGENCY PHONE LIST****CHEVRON NORTH AMERICA E&P, INC.**

Wayne Minchew – Operations Supervisor	505-631-9119	806-592-8043
Larry Ridenour – Operations Representative	505-631-9110	505-396-5485
Jesse Navarrette – Plant Supervisor	505-631-4407	505-396-2557
Bobby Hill – Art. Lift/Cor. Rep.	505-631-9108	505-396-2382
August Venegas – Art. Lift/Cor.Rep.	505-631-9076	505-393-0347
Patsi Humphrey – Maintenance Planner	505-631-0125	505-396-5027
George Garcia – Workover Rep.	505-631-3123	505-392-2595
Mike Northcutt – Workover Rep.	505-390-1090	505-392-8616
Dee Tate – Construction Rep.	505-441-3749	505-392-1306
Larry Williams – HES Champion	505-390-7165	505-392-1117
Keith Innes – Oil Area Manager	432-425-0252	432-522-7481

**Indian Fire & Safety, Inc.**  
**3317 W. County Road**  
**505-393-3093 - office**  
**800-530-8693 – toll free**  
**505-392-6274 – fax**

**Personnel Contact List**

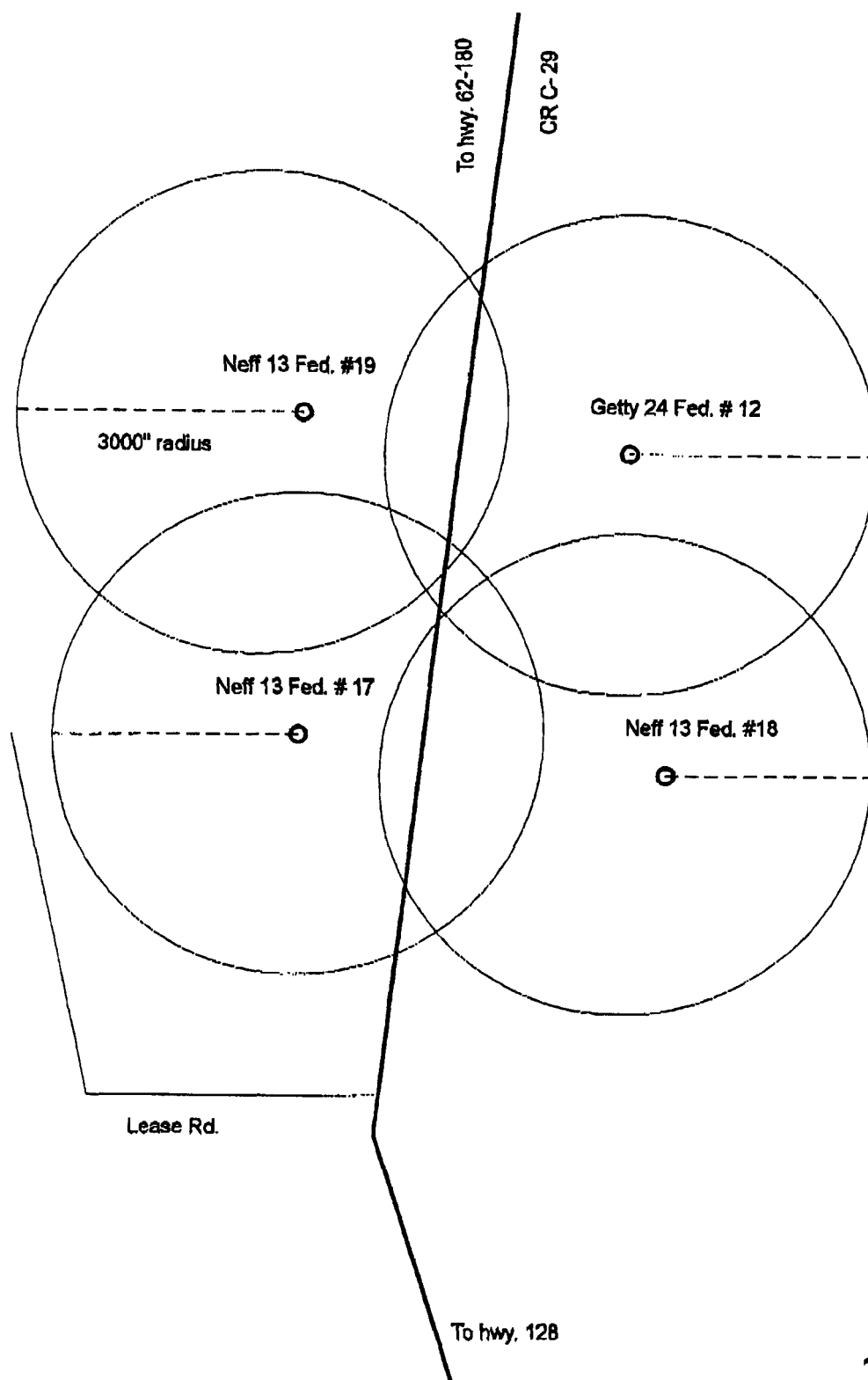
	<b>Cell Phone</b>	<b>Home Phone</b>
Lanny Taylor	631-9755	392-6161
James Spurgeon	390-8582	492-9354
Scott Dudenhoeffer	631-9753	392-4833
Sam Abney	631-9712	393-5427
Curtis Newton	631-1255	393-3762
Chris Spurgeon	806-215-1087	806-592-0079

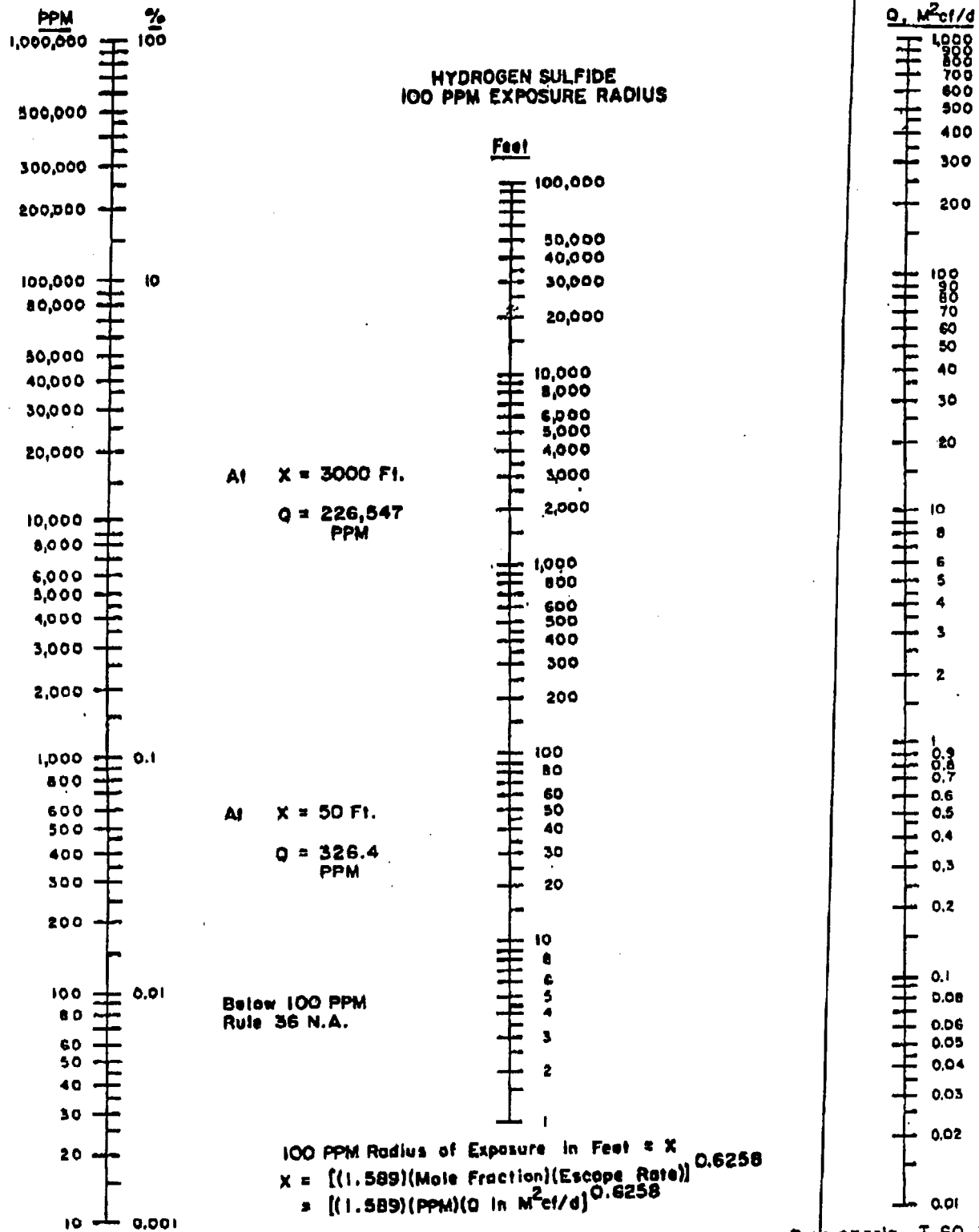
**NABORS DRILLING USA, LP**  
**WEST TEXAS / NEW MEXICO DISTRICT**

ODESSA OFFICE:  
 (432) 363-8180 or (432) 550-7808  
 (432) 550-9999 fax

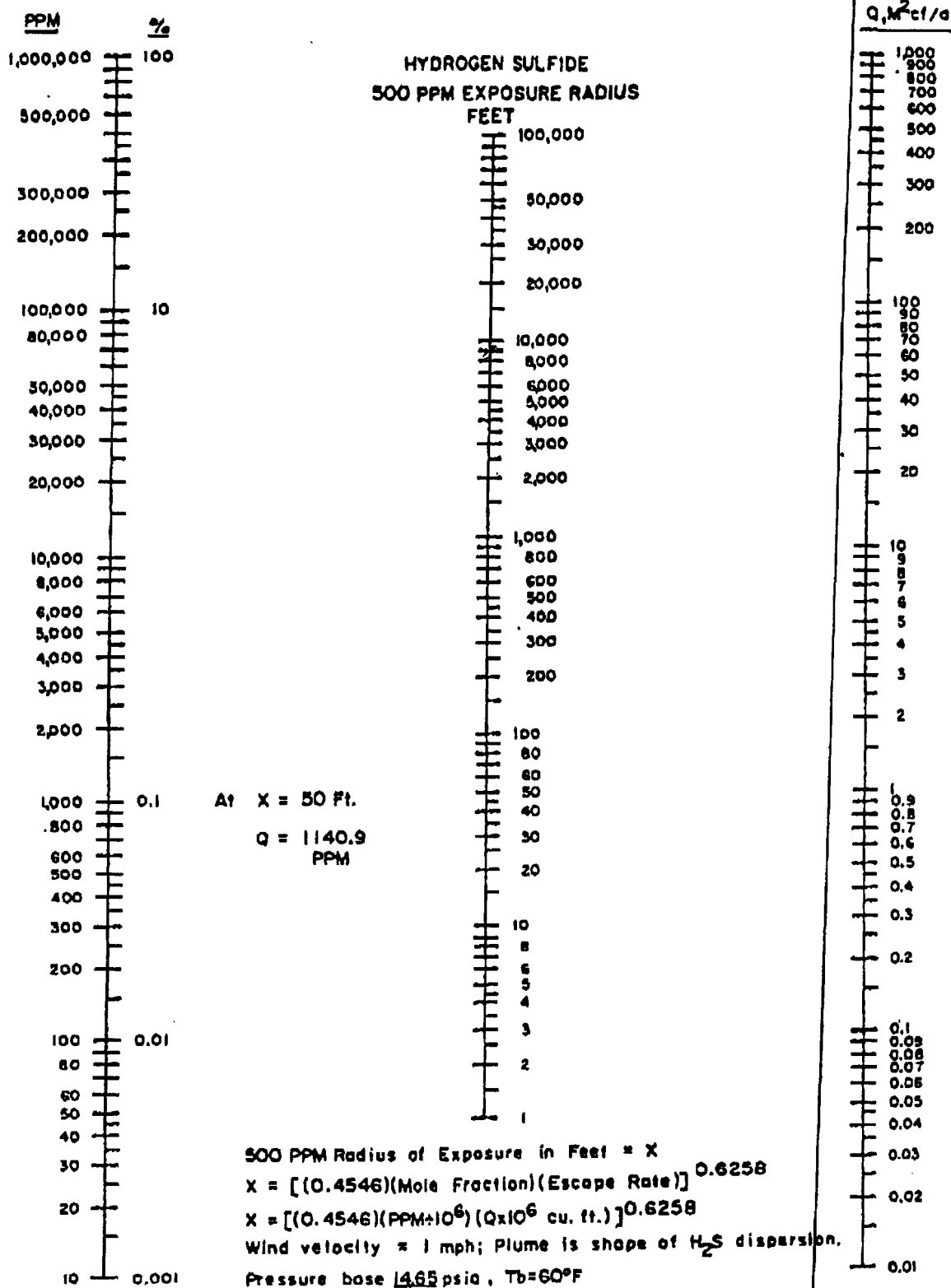
CONTACT / TITLE		Ext.	MOBILE	RESIDENCE	HOME/OFFICE FAX	LOCAL PAGER	NATIONWIDE PAGER
<b>Emergency Contacts</b>	KEITH DUNN District Manager	308	(432) 557-1268	(432) 689-3054	(432) 550-0863	Home Fax (432) 689-3069	
	BILL DAVIS Drilling Supt.	302	(432) 664-9991	(432) 366-7084	(432) 368-0805	(432) 495-9053	(800) 999-6710 Pin # 993-6059
	BUTCH DOMINGUEZ Drilling Supt.	303	(432) 664-4710	(432) 445-2280	(432) 445-1568	(432) 495-7446	(800) 880-9753
	DON NELSON Drilling Supt.	313	(432) 664-9990	(432) 524-3559	(432) 524-5745	(432) 495-2410	(800) 407-0176
	JIM COLLUM HR Coordinator	316	(432) 664-9993	(432) 362-3689	(432) 362-2721	(432) 499-9909	(800) 763-9909
	JESSE SILVAS HSE Coordinator	307	(432) 664-9980		(432) 366-3903	(432) 567-0968	(800) 884-0968
	J.J. NABARRETTE Safety Coach	306	(432) 664-4275	(432) 362-8508			

**Chevron**  
**Neff 13 Federal # 17, # 18, # 19**  
**Sec. 13, T-22-S, R-31-E**  
**Eddy County, NM**



P<sub>0</sub> 14.65 psia T 60 °F





## H2S CONTINGENCY PLAN

TOXIC EFFECTS OF HYDROGEN SULFIDE

HYDROGEN SULFIDE IS EXTREMELY TOXIC. THE ACCEPTABLE CEILING CONCENTRATION FOR EIGHT-HOUR EXPOSURE IS 10 PPM, WHICH IS .001% BY VOLUME. HYDROGEN SULFIDE IS HEAVIER THAN AIR (SPECIFIC GRAVITY - 1.192) AND COLORLESS. IT FORMS AN EXPLOSIVE MIXTURE WITH AIR BETWEEN 4.3 AND 46.0 PERCENT BY VOLUME. HYDROGEN SULFIDE IS ALMOST AS TOXIC AS HYDROGEN CYANIDE AND IS BETWEEN FIVE AND SIX TIMES MORE TOXIC THAN CARBON MONOXIDE. TOXICITY DATA FOR HYDROGEN SULFIDE AND VARIOUS OTHER GASES ARE COMPARED IN TABLE I. PHYSICAL EFFECTS AT VARIOUS HYDROGEN SULFIDE EXPOSURE LEVELS ARE SHOWN IN TABLE II.

TABLE I  
TOXICITY OF VARIOUS GASES

COMMON NAME	CHEMICAL FORMULA	SPECIFIC GRAVITY (SC=1)	THRESHOLD LIMIT (1)	HAZARDOUS LIMIT (2)	LETHAL CONCENTRATION (3)
HYDROGEN CYANIDE	HCN	0.94	10 PPM	150 PPM/HR	300 PPM
HYDROGEN SULFIDE	H2S	1.18	10 PPM	250 PPM/HR	600 PPM
SULFUR DIOXIDE	SO2	2.21	5 PPM	-	1000 PPM
CHLORINE	CL2	2.45	1 PPM	4 PPM/HR	1000 PPM
CARBON MONOXIDE	CO	0.97	50 PPM	400 PPM/HR	1000 PPM
CARBON DIOXIDE	CO2	1.52	5000 PPM	5%	10%
METHANE	CH4	0.55	90,000 PPM	COMBUSTIBLE ABOVE 5% IN AIR	

- 1) THRESHOLD LIMIT - CONCENTRATION AT WHICH IT IS BELIEVED THAT ALL WORKERS MAY BE REPEATEDLY EXPOSED DAY AFTER DAY WITHOUT ADVERSE EFFECTS.
- 2) HAZARDOUS LIMIT - CONCENTRATION THAT WILL CAUSE DEATH WITH SHORT-TERM EXPOSURE.
- 3) LETHAL CONCENTRATION - CONCENTRATION THAT WILL CAUSE DEATH WITH SHORT-TERM EXPOSURE.

H<sub>2</sub>S CONTINGENCY PLANTOXIC EFFECTS OF HYDROGEN SULFIDETABLE II  
PHYSICAL EFFECTS OF HYDROGEN SULFIDE

<u>PERCENT (%)</u>	<u>PPM</u>	<u>CONCENTRATION</u> <u>GRAINS</u> <u>100 STD. FT3*</u>	<u>PHYSICAL EFFECTS</u>
0.001	<10	00.65	Obvious and unpleasant odor.
0.002	10	01.30	Safe for 8 hours of exposure.
0.010	100	06.48	Kill smell in 3 – 15 minutes. May sting eyes and throat.
0.020	200	12.96	Kills smell shortly; Stings eyes and throat.
0.050	500	32.96	Dizziness; Breathing ceases in a few minutes; Needs prompt artificial respiration.
0.070	700	45.36	Unconscious quickly; Death will result if not rescued promptly.
0.100	1000	64.30	Unconscious at once; Followed by death within minutes.

\*AT 15.00 PSIA AND 60°F.

## H2S CONTINGENCY PLAN

### USE OF SELF-CONTAINED BREATHING EQUIPMENT

1. WRITTEN PROCEDURES SHALL BE PREPARED COVERING SAFE USE OF SCBA'S IN DANGEROUS ATMOSPHERE, WHICH MIGHT BE ENCOUNTERED IN NORMAL OPERATIONS OR IN EMERGENCIES. PERSONNEL SHALL BE FAMILIAR WITH THESE PROCEDURES AND THE AVAILABLE SCBA.
2. SCBA'S SHALL BE INSPECTED FREQUENTLY AT RANDOM TO INSURE THAT THEY ARE PROPERLY USED, CLEANED, AND MAINTAINED.
3. ANYONE WHO MAY USE THE SCBA'S SHALL BE TRAINED IN HOW TO INSURE PROPER FACE-PIECE TO FACE SEAL. THEY SHALL WEAR SCBA'S IN NORMAL AIR AND THEN WEAR THEM IN A TEST ATMOSPHERE. (NOTE: SUCH ITEMS AS FACIAL HAIR {BEARD OR SIDEBURNS} AND EYEGLASSES WILL NOT ALLOW PROPER SEAL.) ANYONE THAT MAY BE REASONABLY EXPECTED TO WEAR SCBA'S SHOULD HAVE THESE ITEMS REMOVED BEFORE ENTERING A TOXIC ATMOSPHERE. A SPECIAL MASK MUST BE OBTAINED FOR ANYONE WHO MUST WEAR EYEGLASSES OR CONTACT LENSES.
4. MAINTENANCE AND CARE OF SCBA'S:
  - A. A PROGRAM FOR MAINTENANCE AND CARE OF SCBA'S SHALL INCLUDE THE FOLLOWING:
    1. INSPECTION FOR DEFECTS, INCLUDING LEAK CHECKS.
    2. CLEANING AND DISINFECTING.
    3. REPAIR.
    4. STORAGE.
  - B. INSPECTION; SELF-CONTAINED BREATHING APPARATUS FOR EMERGENCY USE SHALL BE INSPECTED MONTHLY FOR THE FOLLOWING PERMANENT RECORDS KEPT OF THESE INSPECTIONS.
    1. FULLY CHARGED CYLINDERS.
    2. REGULATOR AND WARNING DEVICE OPERATION.
    3. CONDITION OF FACE PIECE AND CONNECTIONS.
    4. ELASTOMER OR RUBBER PARTS SHALL BE STRETCHED OR MASSAGED TO KEEP THEM PLIABLE AND PREVENT DETERIORATION.
  - C. ROUTINELY USED SCBA'S SHALL BE COLLECTED, CLEANED AND DISINFECTED AS FREQUENTLY AS NECESSARY TO INSURE PROPER PROTECTION IS PROVIDED. (22)

## H2S CONTINGENCY PLAN

### USE OF SELF-CONTAINED BREATHING EQUIPMENT

5. PERSONS ASSIGNED TASKS THAT REQUIRES USE OF SELF-CONTAINED BREATHING EQUIPMENT SHALL BE CERTIFIED PHYSICALLY FIT FOR BREATHING EQUIPMENT USAGE BY THE LOCAL COMPANY PHYSICIAN AT LEAST ANNUALLY.
6. SCBA'S SHOULD BE WORN WHEN:
  - A. ANY EMPLOYEE WORKS NEAR THE TOP OR ON TOP OF ANY TANK UNLESS TEST REVEALS LESS THAN 10 PPM OF H2S.
  - B. WHEN BREAKING OUT ANY LINE WHERE H2S CAN REASONABLY BE EXPECTED.
  - C. WHEN SAMPLING AIR IN AREAS TO DETERMINE IF TOXIC CONCENTRATIONS OF H2S EXISTS.
  - D. WHEN WORKING IN AREAS WHERE OVER 10 PPM H2S HAS BEEN DETECTED.
  - E. AT ANY TIME THERE IS A DOUBT AS TO THE H2S LEVEL IN THE AREA TO BE ENTERED.

## H2S CONTINGENCY PLAN

### RESCUE FIRST AID FOR H2S POISONING

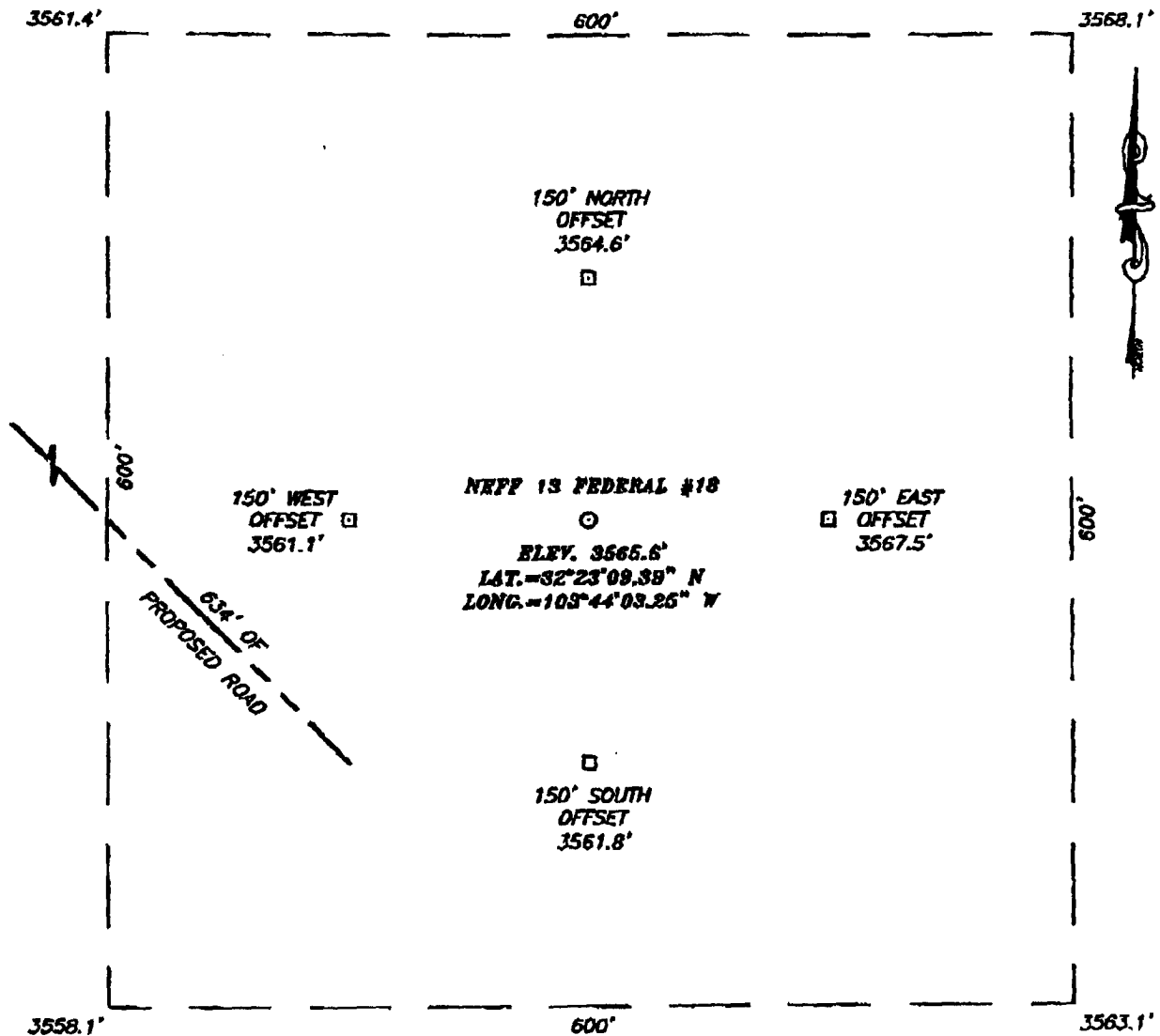
#### DO NOT PANIC!

REMAIN CALM – THINK!

1. HOLD YOUR BREATH. (DO NOT INHALE FIRST; STOP BREATHING.)
2. PUT ON BREATHING APPARATUS.
3. REMOVE VICTIM(S) TO FRESH AIR AS QUICKLY AS POSSIBLE. (GO UP-WIND FROM SOURCE OR AT RIGHT ANGLE TO THE WIND. NOT DOWN WIND.)
4. BRIEFLY APPLY CHEST PRESSURE – ARM LIFT METHOD OF ARTIFICIAL RESPIRATION TO CLEAN THE VICTIM'S LUNGS AND TO AVOID INHALING ANY TOXIC GAS DIRECTLY FROM THE VICTIM'S LUNGS.
5. PROVIDE FOR PROMPT TRANSPORTATION TO THE HOSPITAL, AND CONTINUE GIVING ARTIFICIAL RESPIRATION IF NEEDED.
6. HOSPITAL(S) OR MEDICAL FACILITIES NEED TO BE INFORMED, BEFORE-HAND, OF THE POSSIBILITY OF H2S GAS POISONING – NO MATTER HOW REMOTE THE POSSIBILITY IS.
7. NOTIFY EMERGENCY ROOM PERSONNEL THAT THE VICTIM(S) HAS BEEN EXPOSED TO H2S GAS.

BESIDES BASIC FIRST AID, EVERYONE ON LOCATION SHOULD HAVE A GOOD WORKING KNOWLEDGE OF ARTIFICIAL RESPIRATION, AS WELL AS FIRST AID FOR EYES AND SKIN CONTACT WITH LIQUID H2S. EVERYONE NEEDS TO MASTER THESE NECESSARY SKILLS.

# SECTION 13, TOWNSHIP 22 SOUTH, RANGE 31 EAST, N.M.P.M., EDDY COUNTY, NEW MEXICO



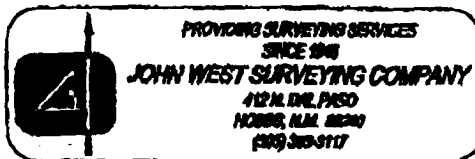
## DIRECTIONS TO LOCATION

FROM THE INTERSECTION OF U.S. HWY #62-180  
AND CO. RD. C-29 (CAMPBELL RD.) GO  
SOUTH-SW ON C.R. C-29 APPROX 12.9 MILES.  
TO A STAKED ROAD ON THE LEFT. FOLLOW  
STAKED ROAD SOUTHEAST APPROX. 634 FEET TO  
THIS LOCATION.



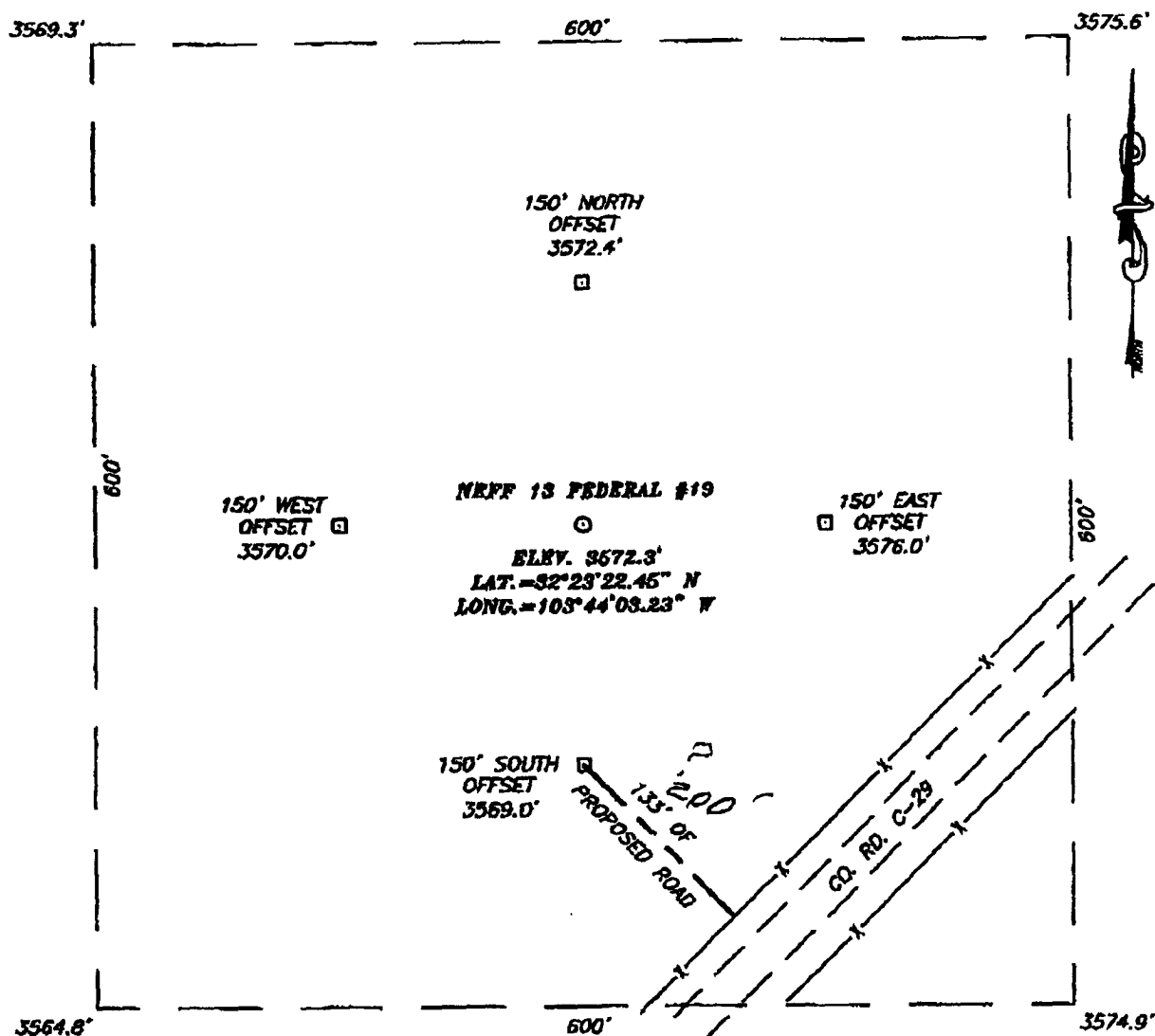
## CHEVRONTEXACO CORPORATION

NEFF 13 FEDERAL #18 WELL  
LOCATED 660 FEET FROM THE SOUTH LINE  
AND 1650 FEET FROM THE WEST LINE OF SECTION 13,  
TOWNSHIP 22 SOUTH, RANGE 31 EAST, N.M.P.M.,  
EDDY COUNTY, NEW MEXICO.



Survey Date: 07/14/05	Sheet 1 of 1 Sheets
W.O. Number: 05.11.1039	Dr By: GS
Date: 07/21/05	Rev 1: N/A
Disk: CD#4	Scale: 1"=100'

# SECTION 13, TOWNSHIP 22 SOUTH, RANGE 31 EAST, N.M.P.M., EDDY COUNTY, NEW MEXICO



## DIRECTIONS TO LOCATION

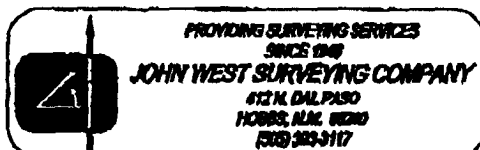
FROM THE INTERSECTION OF U.S. HWY #62-180  
AND CO. RD. C-29 (CAMPBELL RD.) GO  
SOUTH-SW ON C.R. C-29 APPROX 12.6 MILES.  
TO A STAKED ROAD ON THE RIGHT. FOLLOW  
STAKED ROAD NORTHWEST APPROX. 133 FEET TO  
THIS LOCATION.



## CHEVRONTEXACO CORPORATION

NEFF 13 FEDERAL #19 WELL  
LOCATED 1980 FEET FROM THE SOUTH LINE  
AND 1650 FEET FROM THE WEST LINE OF SECTION 13,  
TOWNSHIP 22 SOUTH, RANGE 31 EAST, N.M.P.M.,  
EDDY COUNTY, NEW MEXICO.

Survey Date: 07/14/05	Sheet 1 of 1 Sheets
W.O. Number: 05.11.1040	Dr By: GS
Date: 07/21/05	Disc: CD#4
05111040	Scale: 1"=100'





API_WellNo	CoName	Well_Nm
30015045640000	ARENA RESOURCES, INC	NORTH BENSON QUEEN UNIT
30015056370000	CIMAREX ENERGY CO. OF COLORADO	SHUGART A
30015101930000	ARENA RESOURCES, INC	NORTH BENSON QUEEN UNIT
30015300270000	ST. MARY LAND & EXPLORATION COMPANY	PARKWAY DELAWARE UNIT

Well_No	Dt_Viol	Typ_Enf	DateENF	Dt_CompReq
035	8/8/2006 0:00 NV		11/28/2006 0:00	11/25/2006 0:00
004	8/10/2006 8:57 NV		11/14/2006 0:00	11/13/2006 8:57
023	8/8/2006 0:00 NV		11/28/2006 0:00	11/25/2006 0:00
703	5/2/2006 11:45 NV		11/20/2006 0:00	10/30/2006 0:00

**Cmmnt**

Well is not connected to an injection line therefore testing is not possible (Violation of Rule 704).

8/16/06 Talked to Manual (505)706-1893 - he will notify us when step-rate test is run.

TA Status expired 8/4/2006. Well is not connected to an injection line therefore testing is not possible (Violation of Rule 704).

Has squeezed with 1400 sxs and still will not hold.

Extended.gg☐

9/18/06 Squeezed with 600 sxs will let sit for 7 days and retest. Extended.gg☐

Last ext 10/20/06.gg

API_WellNo	CoName	Well_Nm	Well_No	Dt_Viol	Typ_Enf	DateENF	Dt_CompReq	Cmnt
30015045640000	ARENA RESOURCES, INC	NORTH BENSON QUEEN UNIT	035	8/8/2006 0:00	NV	11/28/2006 0:00	11/25/2006 0:00	Well is not connected to an injection line therefore testing is not possible (Violation of Rule 704).
30015056370000	CIMAREX ENERGY CO. OF COLORADO	SHUGART A	004	8/10/2006 8:57	NV	11/14/2006 0:00	11/13/2006 8:57	8/16/06 Talked to Manual (505)706-1893 - he will notify us when step-rate test is run.
30015101930000	ARENA RESOURCES, INC	NORTH BENSON QUEEN UNIT	023	8/8/2006 0:00	NV	11/28/2006 0:00	11/25/2006 0:00	TA Status expired 8/4/2006. Well is not connected to an injection line therefore testing is not possible (Violation of Rule 704).
30015300270000	ST. MARY LAND & EXPLORATION COMPANY	PARKWAY DELAWARE UNIT	703	5/2/2006 11:45	NV	11/20/2006 0:00	10/30/2006 0:00	Has squeezed with 1400 sxs and still will not hold. Extended.gg 1 9/18/06 Squeezed with 600 sxs will let sit for 7 days and retest. Extended.gg : Last ext 10/20/06 gg