

HIGH CAVE KARST

OCD-ARTESIA

Form 3160-3
(April 2004)

Month - Year

MAY 30 2007

OCD - ARTESIA, NM

UNITED STATES
DEPARTMENT OF THE INTERIOR
BUREAU OF LAND MANAGEMENT

APPLICATION FOR PERMIT TO DRILL OR REENTER

FORM APPROVED
OMB No. 1004-0137
Expires March 31, 20075. Lease Serial No.
NMNM 02860

6. If Indian, Allottee or Tribe Name

7. If Unit or CA Agreement, Name and No.
NMNM 710168. Lease Name and Well No.
Poker Lake Unit #225

9. API Well No.

30-015-35637

10. Field and Pool, or Exploratory
Nash Draw (Dela, BS, Avalon Sd)

11. Sec., T. R. M. or Blk. and Survey or Area

Sec 17, T24S, R30E, MER NMP

12. County or Parish
Eddy County13. State
NM1a. Type of work: ☒ DRILL ☐ REENTER
1b. Type of Well: ☒ Oil Well ☐ Gas Well ☐ Other ☐ Single Zone ☐ Multiple Zone2. Name of Operator
BEPCO, L. P.3a. Address P. O. Box 2760
Midland, TX 797023b. Phone No. (include area code)
432-683-22774. Location of Well (Report location clearly and in accordance with any State requirements *)
At surface ~~SWNE~~, UL C, 990' FNL, 1650' FWL, Lat N32.222222, Lon W103.906833
At proposed prod. zone Same ~~CARLSBAD CONTROLLED WATER BASIN~~14. Distance in miles and direction from nearest town or post office*
14 Miles East of Malaga, NM15. Distance from proposed*
location to nearest
property or lease line, ft.
(Also to nearest drig. unit line, if any)

990'

16. No. of acres in lease

2520

17. Spacing Unit dedicated to this well

40

18. Distance from proposed location*
to nearest well, drilling, completed,
applied for, on this lease, ft.

660'

19. Proposed Depth

~~7700' MD / 7700' TVD~~
7730' / 7730'

20. BLM/BIA Bond No. on file

NM 2204

21. Elevations (Show whether DF, KDB, RT, GL, etc.)
3214' GL22. Approximate date work will start*
04/15/200823. Estimated duration
12 days

24. Attachments

The following, completed in accordance with the requirements of Onshore Oil and Gas Order No.1, shall be attached to this form:

- Well plat certified by a registered surveyor.
- A Drilling Plan.
- A Surface Use Plan (if the location is on National Forest System Lands, the SUPO shall be filed with the appropriate Forest Service Office).
- Bond to cover the operations unless covered by an existing bond on file (see Item 20 above).
- Operator certification
- Such other site specific information and/or plans as may be required by the authorized officer.

25. Signature *Annette Childers*Name (Printed/Typed)
Annette ChildersDate
4-5-2007Title
Administrative AssistantApproved by (Signature) */s/ Jesse J. Juen*

Name (Printed/Typed)

Date
MAY 17 2007Title
STATE DIRECTOROffice
NM STATE OFFICEApplication approval does not warrant or certify that the applicant holds legal or equitable title to those rights in the subject lease which would entitle the applicant to conduct operations thereon.
Conditions of approval, if any, are attached.

APPROVAL FOR 1 YEAR

Title 18 U.S.C. Section 1001 and Title 43 U.S.C. Section 1212, make it a crime for any person knowingly and willfully to make to any department or agency of the United States any false, fictitious or fraudulent statements or representations as to any matter within its jurisdiction.

*(Instructions on page 2)

SEE ATTACHED FOR
CONDITIONS OF APPROVALIf earthen pits are used in
association with the drilling of this
well, an OCD pit permit must be
obtained prior to pit construction.APPROVAL SUBJECT TO
GENERAL REQUIREMENTS
AND SPECIAL STIPULATIONS
ATTACHED

DISTRICT I

1625 N. French Dr., Hobbs, NM 88240

DISTRICT II

1301 W. Grand Avenue, Artesia, NM 88210

DISTRICT III

1000 Rio Brazos Rd., Aztec, NM 87410

DISTRICT IV

1820 S. St. Francis Dr., Santa Fe, NM 87505

State of New Mexico
Energy, Minerals and Natural Resources Department

Form C-102

Revised October 12, 2005

Submit to Appropriate District Office

State Lease - 4 Copies

Fee Lease - 3 Copies

OIL CONSERVATION DIVISION

1220 South St. Francis Dr.

Santa Fe, New Mexico 87505

☐ AMENDED REPORT

WELL LOCATION AND ACREAGE DEDICATION PLAT

| | | | |
|---------------|-----------------|-----------|--|
| API Number | | Pool Code | Pool Name |
| | | 47545 | Nash Draw (Delaware, Bone Spring, Avalon Sd) |
| Property Code | Property Name | | Well Number |
| 001796 | POKER LAKE UNIT | | 225 |
| OGRID No. | Operator Name | | Elevation |
| 001801 | BEPCO, L.P. | | 3214' |

Surface Location

| | | | | | | | | | |
|---------------|---------|----------|-------|---------|---------------|------------------|---------------|----------------|--------|
| UL or lot No. | Section | Township | Range | Lot Idn | Feet from the | North/South line | Feet from the | East/West line | County |
| C | 17 | 24 S | 30 E | | 990 | NORTH | 1650 | WEST | EDDY |

Bottom Hole Location If Different From Surface

| | | | | | | | | | |
|-----------------|-----------------|--------------------|-------|-----------|---------------|------------------|---------------|----------------|--------|
| UL or lot No. | Section | Township | Range | Lot Idn | Feet from the | North/South line | Feet from the | East/West line | County |
| | | | | | | | | | |
| Dedicated Acres | Joint or Infill | Consolidation Code | | Order No. | | | | | |
| 40 | N | | | | | | | | |

NO ALLOWABLE WILL BE ASSIGNED TO THIS COMPLETION UNTIL ALL INTERESTS HAVE BEEN CONSOLIDATED
OR A NON-STANDARD UNIT HAS BEEN APPROVED BY THE DIVISION

| | | |
|--|---|------|
| | OPERATOR CERTIFICATION I hereby certify that the information contained herein is true and complete to the best of my knowledge and belief, and that this organization either owns a working interest or unleased mineral interest in the land including the proposed bottom hole location pursuant to a contract with an owner of such a mineral or working interest, or to a voluntary pooling agreement or a compulsory pooling order heretofore entered by the division. | |
| | Signature | Date |
| | Refer to original plat | |
| | Printed Name | |
| | SURVEYOR CERTIFICATION I hereby certify that the well location shown on this plat was plotted from field notes of actual surveys made by me or under my supervision, and that the same is true and correct to the best of my belief. | |
| | MARCH 12, 2005 | |
| | Date Surveyed | |
| | Signature & Seal of Professional Surveyor | |
| | Certificate No. Gary L. Jones 7977 | |
| | BASIN SURVEYS | |

Surface casing to be set into the Rustler below all fresh water sands.

Production casing will be cemented using Zone Seal cement.

Drilling Procedure, BOP Diagram, Anticipated tops and surface plans attached.

This well is located inside the Secretary's Potash area and outside the R-111 Potash area. There are no potash leased within 1 mile of the location.

DISTRICT I

1626 N. French Dr., Hobbs, NM 88240

DISTRICT II

811 South First, Artesia, NM 88210

DISTRICT III

1000 Rio Brazos Rd., Aztec, NM 87410

DISTRICT IV

2040 South Pacheco, Santa Fe, NM 87505

State of New Mexico

Energy, Minerals and Natural Resources Department

Form C-102

Revised March 17, 1999

Submit to Appropriate District Office

State Lease - 4 Copies

Fee Lease - 3 Copies

OIL CONSERVATION DIVISION

2040 South Pacheco

Santa Fe, New Mexico 87504-2088

☐ AMENDED REPORT

WELL LOCATION AND ACREAGE DEDICATION PLAT

| | | |
|---------------|-------------------------------------|----------------------|
| API Number | Pool Code | Pool Name |
| | 47545 | NASH DRAW - DELAWARE |
| Property Code | Property Name | Well Number |
| 001796 | POKER LAKE UNIT | 225 |
| OGRID No. | Operator Name | Elevation |
| 001801 | BASS ENTERPRISES PRODUCTION COMPANY | 3214' |

Surface Location

| UL or lot No. | Section | Township | Range | Lot Idn | Feet from the | North/South line | Feet from the | East/West line | County |
|---------------|---------|----------|-------|---------|---------------|------------------|---------------|----------------|--------|
| C | 17 | 24 S | 30 E | | 990 | NORTH | 1650 | WEST | EDDY |

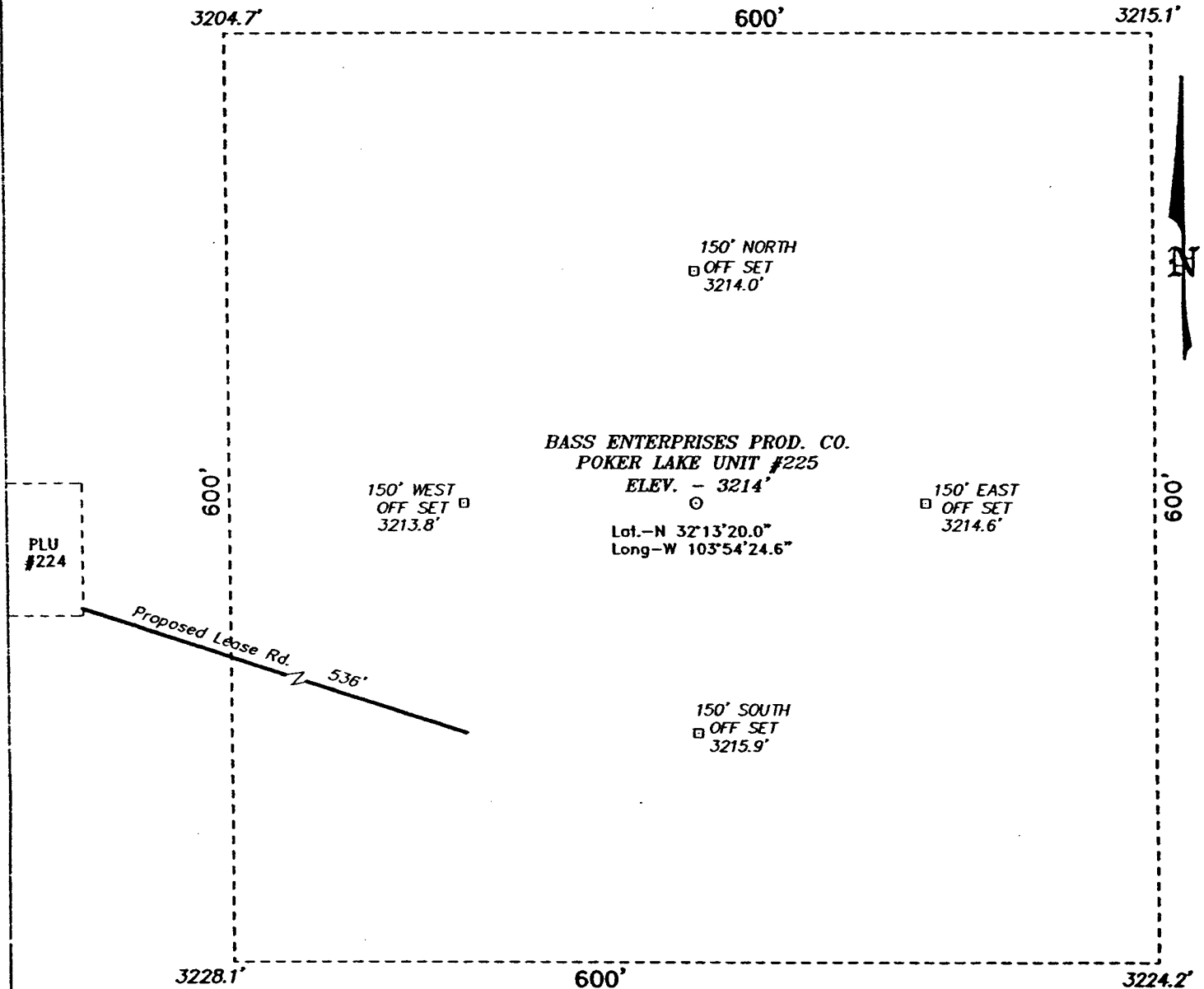
Bottom Hole Location If Different From Surface

| UL or lot No. | Section | Township | Range | Lot Idn | Feet from the | North/South line | Feet from the | East/West line | County |
|-----------------|-----------------|--------------------|-----------|---------|---------------|------------------|---------------|----------------|--------|
| | | | | | | | | | |
| Dedicated Acres | Joint or Infill | Consolidation Code | Order No. | | | | | | |
| 40 | N | | | | | | | | |

NO ALLOWABLE WILL BE ASSIGNED TO THIS COMPLETION UNTIL ALL INTERESTS HAVE BEEN CONSOLIDATED
OR A NON-STANDARD UNIT HAS BEEN APPROVED BY THE DIVISION

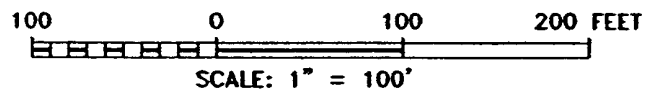
| | | |
|---|---|--|
| <p>LAT - N32°13'20.0" LONG - W103°54'24.6"</p> <p>160 AC.</p> | OPERATOR CERTIFICATION I hereby certify the the information contained herein is true and complete to the best of my knowledge and belief. <u>William R. Dannels</u> Signature W.R. DANNELS Printed Name DIVISION DRILLING SUPT. Title <u>4/16/05</u> Date | |
| | SURVEYOR CERTIFICATION I hereby certify that the well location shown on this plat was plotted from field notes of actual surveys made by me or under my supervision, and that the same is true and correct to the best of my belief. MARCH 12, 2005 Date Surveyed <u>GARY L. JONES</u> Signature & Seal of Professional Surveyor NO. 5163 Certificate 7977 BASIN SURVEYS | |
| | 160 AC. | |
| | 160 AC. | |

SECTION 17, TOWNSHIP 24 SOUTH, RANGE 30 EAST, N.M.P.M.,
EDDY COUNTY, NEW MEXICO.



DIRECTIONS TO LOCATION:

FROM THE JUNCTION OF CO. R. 793 AND STATE HWY 128, GO SOUTH ON 793 FOR APPROX. 4.0 MILES TO LEASE ROAD; THENCE EAST ON LEASE ROAD FOR 0.25 MILE; THENCE SOUTH 0.9 MILE; THENCE EAST 0.3 MILE; THENCE SOUTHERLY FOR APPROX. 3.5 MILES TO PROPOSED LEASE ROAD.



BASS ENTERPRISES PRODUCTION CO.

REF: POKER LAKE UNIT No. 225 / Well Pad Topo

THE POKER LAKE UNIT No. 225 LOCATED 990' FROM
THE NORTH LINE AND 1650' FROM THE WEST LINE OF
SECTION 17, TOWNSHIP 24 SOUTH, RANGE 30 EAST,
N.M.P.M., EDDY COUNTY, NEW MEXICO.

BASIN SURVEYS P.O. BOX 1786-HOBBS, NEW MEXICO

W.O. Number: 5163

Drawn By: K. GOAD

Date: 03-16-2005 Disk: KIG CD#7 - 5163A.DWG

Survey Date: 03-12-2005 Sheet 1 of 1 Sheet

**EIGHT POINT DRILLING PROGRAM
BASS ENTERPRISES PRODUCTION CO.**

NAME OF WELL: Poker Lake Unit #225

LEGAL DESCRIPTION - SURFACE: 990' FNL & 1650' FWL, Section 17, T-24-S, R-30-E, Eddy County, New Mexico.

POINT 1: ESTIMATED FORMATION TOPS

(See No. 2 Below)

POINT 2: WATER, OIL, GAS AND/OR MINERAL BEARING FORMATIONS

Anticipated Formation Tops: KB 3234' (est) GL 3214'

| <u>FORMATION</u> | <u>ESTIMATED TOP FROM KB</u> | <u>ESTIMATED SUBSEA TOP</u> | <u>BEARING</u> |
|---------------------------|----------------------------------|---------------------------------|----------------|
| T/Rustler | 644' | +2590' | Barren |
| T/Salt | 1279' | +1955' | Barren |
| T/Ramsey Sand | 3576' | -342' | Oil/Gas |
| T/Lwr Brushy Canyon "8" A | 7099' | -3865' | Oil/Gas |
| T/Bone Spring | 7394' | -4160' | Oil/Gas |
| TD | 7730' | -4496' | |

POINT 3: CASING PROGRAM

| <u>TYPE</u> | <u>INTERVALS</u> | <u>PURPOSE</u> | <u>CONDITION</u> |
|---------------------------|------------------|----------------|-----------------------|
| 16" | 0' - 40' | Conductor | Contractor Discretion |
| 8-5/8" 32# LTC J-55 | 0' - 1260' | Surface | New |
| 5-1/2", 15.5#, J-55, LT&C | 0' - 6300' | Production | New |
| 5-1/2", 17#, J-55, LT&C | 6300' - 7730' | Production | New |

WITNESS

POINT 4: PRESSURE CONTROL EQUIPMENT (SEE ATTACHED DIAGRAM)

See CDK
A BOP equivalent to Diagram 1 will be nipped up on the surface casing head. The BOP stack, choke, kill lines, kelly cocks, inside BOP, etc. when rigged up on the surface casing will be hydro-tested to 70% of internal yield pressure of casing or 1000 psig whichever is less with the rig pump. In addition to the high pressure test, a low pressure (200 psi) test will be required.

These tests will be performed:

- Upon installation
- After any component changes
- Fifteen days after a previous test
- As required by well conditions

A function test to insure that the preventers are operating correctly will be performed on each trip.

POINT 5: MUD PROGRAM

| DEPTH | MUD TYPE | WEIGHT | FV | PV | YP | FL | Ph |
|---------------|--------------------|------------|-------|----|----|--------|------------|
| 0' - 1260' | FW Spud Mud | 8.5 - 9.2 | 38-70 | NC | NC | NC | 10.0 |
| 1260' - 5600' | Brine Water | 9.8 - 10.2 | 28-30 | NC | NC | NC | 9.5 - 10.5 |
| 5600' - 7730' | Brine Water/Diesel | 8.8 - 9.2 | 30-34 | 8 | 2 | <25 cc | 9.5 - 10.5 |

NOTE: May increase vis for logging purposes only.

POINT 6: TECHNICAL STAGES OF OPERATION

A) TESTING

None anticipated.

B) LOGGING

GR-CNL-LDT-AIT from TD to base of Salt (+/- 3300').
GR-CNL-CAL from base of Salt to surface.

C) CONVENTIONAL CORING

None anticipated.

D) CEMENT

| INTERVAL | AMOUNT SXS | FT OF FILL | TYPE | GALS/SX | PPG | FT ³ /SX |
|---|------------|------------|--|---------|------|---------------------|
| SURFACE: | | | | | | |
| Lead 0 - 960' (100% excess circ to surface) | 400 | 960 | Permian Basin Critical Zone + 1/2# Flocele | 10.4 | 12.8 | 1.90 |
| Tail 960'-1260' (100% excess circ to surface) | 200 | 300 | Prem Plus + 2% CaCl ₂ + 1/2# Flocele | 6.33 | 14.8 | 1.35 |

PRODUCTION:

See Coa

Base Slurry
w/nitrogen
3076-7730' +
(50% excess)

775

4654

Premium Plus + 2% Zone
Sealant 2000

6.32

9.1-14.5

2.3-1.39

Nitrogen

COMPRESSIVE
Strength

300/600
scf/bbl

1200

E) DIRECTIONAL DRILLING

No directional services anticipated.

POINT 7: ANTICIPATED RESERVOIR CONDITIONS

Normal pressures are anticipated throughout Delaware section. A BHP of 3285 psi (max) or MWE of 8.7 ppg is expected. Lost circulation may exist in the Delaware Section from 3513-7340'. No H₂S is anticipated.

POINT 8: OTHER PERTINENT INFORMATION**A) Auxiliary Equipment**

Upper and lower kelly cocks. Full opening stab in valve on the rig floor.

B) Anticipated Starting Date

Upon approval

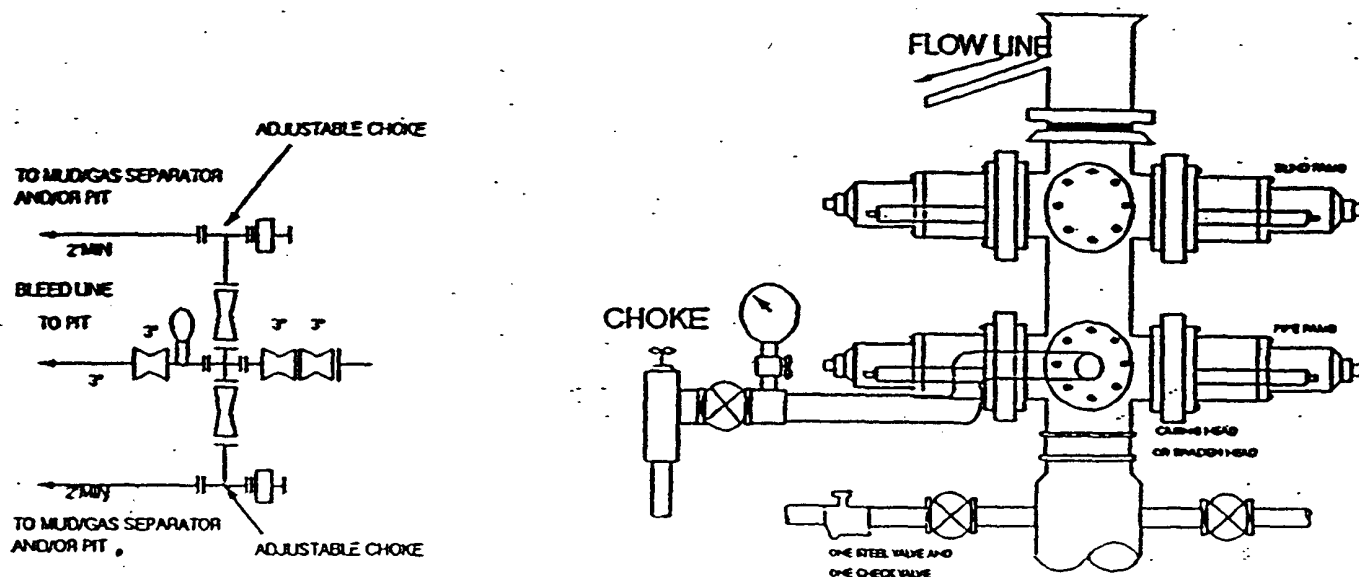
12 days drilling operations

14 days completion operations

GEG/cdg

April 13, 2005

2000 PSI WP



THE FOLLOWING CONSTITUTE MINIMUM BLOWOUT PREVENTER REQUIREMENTS

- A. One double gate blowout preventer with lower rams for pipe and upper rams blind, all hydraulically controlled.
- B. Opening on preventers between rams to be flanged, studded or clamped and at least two inches in diameter.
- C. All connections from operating manifold to preventers to be all steel hose or tube a minimum of one inch in diameter.
- D. The available closing pressure shall be at least 15% in excess of that required with sufficient volume to operate (close, open, and re-close) the preventers.
- E. All connections to and from preventers to have a pressure rating equivalent to that of the BOP's.
- F. Manual controls to be installed before drilling cement plug.
- G. Valve to control flow through drill pipe to be located on rig floor.
- H. All chokes will be adjustable. Choke spool may be used between rams.

MULTI-POINT SURFACE USE PLAN

NAME OF WELL: Poker Lake Unit #225

LEGAL DESCRIPTION - SURFACE: 990' FNL & 1650' FWL, Section 17, T-24-S, R-30-E, Eddy County, New Mexico.

POINT 1: EXISTING ROADS

A) Proposed Well Site Location:

See Exhibit A and Survey Plats

B) Existing Roads:

From Carlsbad, New Mexico, go 8 miles south on Highway 285 to Highway 31. Turn north and go 7 miles on Highway 31. Turn east on Highway 128 and go 4 miles to Rawhide Road (located between mile markers 4 and 5). Turn southeast onto Rawhide Road and go approximately 9.0 miles southerly.

C) Existing Road Maintenance or Improvement Plan:

See Exhibit B and Survey Plats.

POINT 2: NEW PLANNED ACCESS ROUTE

A) Route Location:

Approximately 536' of new road is required.

B) Width

12'

C) Maximum Grade

Grade to match existing topography or as per BLM requirements.

D) Turnout Ditches

Spaced per BLM requirements.

E) Culverts, Cattle Guards, and Surfacing Equipment

If required, culverts and cattle guards will be set per BLM Specs.

POINT 3: LOCATION OF EXISTING WELLS

Exhibit A indicates existing wells within the surrounding area.

POINT 4: LOCATION OF EXISTING OR PROPOSED FACILITIES

Page 2

A) Existing facilities within one mile owned or controlled by lessee/operator:

Oil/Gas production facilities are located at Poker Lake Unit #158 & Poker Lake Unit #213 wellsites.

B) New Facilities in the Event of Production:

Existing production facilities at Poker Lake Unit #213 will be used via flowlines. Additional separators/treaters will be added as necessary. A new flowline consisting of 2-7/8" steel pipe will be laid within 50' of the center line of the access road and existing roads which have previously been Arch cleared.

C) Rehabilitation of Disturbed Areas Unnecessary for Production:

Following flowline construction, those access areas required for continued production will be graded to provide drainage and minimize erosion. The areas unnecessary for use will be graded to blend in with the surrounding topography (see Point 10)

POINT 5: LOCATION AND TYPE OF WATER SUPPLY

A) Location and Type of Water Supply

Fresh water will be hauled from Johnson Station 50 miles east of Carlsbad, New Mexico or other commercial facilities. Brine water will be hauled from commercial facilities.

B) Water Transportation System

Water hauling to the location will be over the existing and proposed roads.

POINT 6: SOURCE OF CONSTRUCTION MATERIALS

A) Materials

Exhibit B shows location of caliche source.

B) Land Ownership

Federally Owned.

C) Materials Foreign to the Site

No construction materials foreign to this area are anticipated for this drill site.

D) Access Roads

See Exhibit B.

POINT 7: METHODS FOR HANDLING WASTE MATERIAL

Page 3

A) Cuttings

Cuttings will be contained in the reserve pit.

B) Drilling Fluids

Drilling fluids will be contained in the reserve pit.

C) Produced Fluids

Water production will be contained in the reserve pit.

Hydrocarbon fluid or other fluids that may be produced during testing will be retained in test tanks. Prior to cleanup operations, any hydrocarbon material in the reserve pit will be removed by skimming or burning as the situation would dictate.

D) Sewage

Current laws and regulations pertaining to the disposal of human waste will be complied with.

E) Garbage

Portable containers will be utilized for garbage disposal during the drilling of this well.

F) Cleanup of Well Site

Upon release of the drilling rig, the surface of the drilling pad will be graded to accommodate a completion rig if electric log analysis indicate potential productive zones. The reserve pit will be fenced and bird netted. The fence will be maintained until the pit is backfilled. Reasonable cleanup will be performed prior to the final restoration of the site.

POINT 8: ANCILLARY FACILITIES

None required.

POINT 9: WELL SITE LAYOUT

A) Rig Orientation and Layout

Exhibit "D" shows the dimensions of the well pad and reserve pits, and the location of major rig components. Only minor leveling of the well site will be required. No significant cuts or fills will be necessary.

B) Locations of Pits and Access Road

See Exhibits "B", "C" & "D".

C) Lining of the Pits

The reserve pit will be lined with plastic.

POINT 10: PLANS FOR RESTORATION OF THE SURFACE

A) Reserve Pit Cleanup

The pits will be fenced immediately after construction and shall be maintained until they are backfilled. Previous to backfill operations, any hydrocarbon material on the pits' surfaces shall be removed. The fluids and solids contained in the pits shall be backfilled with soil excavated from the site and soil adjacent to the reserve pits. The restored surface of the pits shall be contoured to prevent impoundment of surface water flow. Water-bars will be constructed as needed to prevent excessive erosion. Topsoil, as available, shall be placed over the restored surface in a uniform layer. The area will be seeded according to the Bureau of Land Management stipulations during the appropriate season following restoration.

B) Restoration Plans - Production Developed

The reserve pits will be backfilled and restored as described above under Item A. In addition, those areas not required for production will be graded to blend with the surrounding topography. Topsoil, as available, will be placed upon those areas and seeded. The portion of the site required for production will be graded to minimize erosion and provide access during inclement conditions. Following depletion and abandonment of the site, restoration procedures will be those that follow under Item C.

C) Restoration Plans - No Production Developed

The reserve pits will be restored as described above. With no production developed, the entire surface disturbed by construction of the well site will be restored. The site will be contoured to blend with the surrounding topography and provide drainage of surface water. The topsoil, as available, shall be replaced in a uniform layer and seeded according to the Bureau of Land Management's stipulations.

D) Rehabilitation's Timetable

Upon completion of drilling operations, the initial cleanup of the site will be performed as soon as weather and site conditions allow economic execution of the work.

POINT 11: OTHER INFORMATION

Page 5

A) Terrain

Relatively flat.

B) Soil

Caliche and sand.

C) Vegetation

Sparse, primarily grasses and mesquite with very little grass.

D) Surface Use

Primarily grazing.

E) Surface Water

There are no ponds, lakes, streams or rivers within several miles of the wellsite.

F) Water Wells

There are two water wells located within 1-1/2 miles of the proposed well. The nearest well is approximately 2000' West of the proposed well. The second water well is located approximately 4200' Southwest of the proposed well and produces water from an estimated depth of 150'.

G) Residences and Buildings

None in the immediate vicinity.

H) Historical Sites

None observed.

I) Archeological Resources

An archeological survey will be obtained for this area. Before any construction begins, a full and complete archeological survey will be submitted to the Bureau of Land Management. Any location or construction conflicts will be resolved before construction begins.

J) Surface Ownership

The well site is on federally owned land.

K) Well signs will be posted at the drilling site.

L) Open Pits

All pits containing liquid or mud will be fenced and bird-netted.

POINT 12: OPERATOR'S FIELD REPRESENTATIVE

Page 6

(Field personnel responsible for compliance with development plan for surface use).

DRILLING

William R. Dannels
Box 2760
Midland, Texas 79702
(432) 683-2277

PRODUCTION

Mike Waygood
3104 East Green Street
Carlsbad, New Mexico 88220
(505) 887-7329

Kent A. Adams
Box 2760
Midland, Texas 79702
(432) 683-2277

POINT 13: CERTIFICATION

I hereby certify that I, or persons under my direct supervision have inspected the proposed drill site and access route; that I am familiar with the conditions which currently exist; that the statements made in the plan are, to the best of my knowledge, true and correct; and that the work associated with operations proposed herein will be performed by Bass Enterprises Production Co. and it's contractors and subcontractors in conformity with this plan and the terms and conditions under which it is approved. This statement is subject to the provisions of 18 U.S.C. 1001 for the filing of a false statement.

4/16/05

Date

William R. Dannels

William R. Dannels

WRD/cdg

CONDITIONS OF APPROVAL - DRILLING

Operator's Name: BEPCO, L.P.
Well Name & No. 225-Poker Lake Unit
Location: 0990FNL, 1650FWL, Section 17, T-24-S, R-30-E
Lease: NMNM 02860

.....

I. DRILLING OPERATIONS REQUIREMENTS:

- A. The Bureau of Land Management (BLM) is to be notified a minimum of 4 hours in advance for a representative to witness:
1. Spudding well
 2. Setting and/or Cementing of all casing strings
 3. BOPE tests
- Eddy County call the Carlsbad Field Office, 620 East Greene St., Carlsbad, NM 88220, (505) 361-2822
- B. Although no Hydrogen Sulfide has been reported in the area, it is always a possible hazard.
- C. Unless the production casing has been run and cemented or the well has been properly plugged, the drilling rig shall not be removed from over the hole without prior approval.

II. CASING:

- A. The 8-5/8 inch surface casing shall be set a minimum of 25 feet into the Rustler Anhydrite and above the salt at approximately 1260 feet and cemented to the surface.
1. If cement does not circulate to the surface, the appropriate BLM office shall be notified and a temperature survey utilizing an electronic type temperature survey with a surface log readout will be used or a cement bond log shall be run to verify the top of the cement.
 2. Wait on cement (WOC) time for a primary cement job will be a minimum of 12 hours for a non-water basin, 18 hours for a water basin, 24 hours in the potash area, or 500 pounds compression strength, whichever is greater. (This is to include the lead cement)
 3. Wait on cement (WOC) time for a remedial job will be a minimum of 4 hours after bringing cement to surface or 500 pounds compression strength, whichever is greater.
 4. If cement falls back, remedial action will be done prior to drilling out that string.

**Possible lost circulation in the Delaware and Bone Spring formations.
High cave/karst area.**

- B. The minimum required fill of cement behind the 5-1/2 inch production casing is **cement shall extend a minimum of 200 feet inside the surface casing.**
- C. If hardband drill pipe is rotated inside casing; returns will be monitored for metal. If metal is found in samples, drill pipe will be pulled and rubber protectors which have a larger diameter than the tool joints of the drill pipe will be installed prior to continuing drilling operations.

III. PRESSURE CONTROL:

- A. All blowout preventer (BOP) and related equipment (BOPE) shall comply with well control requirements as described in Onshore Oil and Gas Order No. 2.
- B. Minimum working pressure of the blowout preventer (BOP) and related equipment (BOPE) required for drilling below the surface casing shoe shall be **2000 (2M) PSI**.
- C. The appropriate BLM office shall be notified a minimum of 4 hours in advance for a representative to witness the tests.
 - 1. The tests shall be done by an independent service company.
 - 2. The results of the test shall be reported to the appropriate BLM office.
 - 3. All tests are required to be recorded on a calibrated test chart. A copy of the BOP/BOPE test chart and a copy of independent service company test will be submitted to the appropriate BLM office.
 - 4. The BOP/BOPE test shall include a low pressure test from 250 to 300 psi in accordance with API RP 53. The test will be held for a minimum of 10 minutes if test is done with a test plug and 30 minutes without a test plug.

Engineer on call: 505-706-2779

WWI 041307