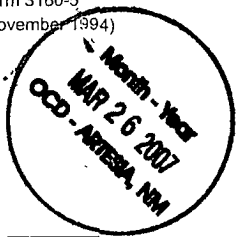


UNITED STATES  
DEPARTMENT OF THE INTERIOR  
BUREAU OF LAND MANAGEMENT

FORM APPROVED  
OMB No 1004-0135  
Expires July 31, 1996



OCD-ARTESIA

SUNDRY NOTICES AND REPORTS ON WELLS  
Do not use this form for proposals to drill or to re-enter an abandoned well. Use form 3160-3 (APD) for such proposals.



SUBMIT IN TRIPLICATE - Other instructions on reverse side

1. Type of Well

☐ Oil Well ☒ Gas Well ☐ Other

2. Name of Operator

Cimarex Energy Co. of Colorado

3a. Address

PO Box 140907; Irving, TX 75014-0907

3b. Phone No. (include area code)

972-401-3111

4. Location of Well (Footage, Sec., T., R., M., or Survey Description)

1980' FSL & 660' FEL  
7-16S-28E

5. Lease Serial No.

NM-104674

6. If Indian, Allottee or Tribe Name

7. If Unit or CA/Agreement, Name and/or No.

Pending

8. Well Name and No.

Crow Flats 7 Federal Com No. 4

9. API Well No.

30-015

10. Field and Pool, or Exploratory Area

Diamond Mound; Morrow

11. County or Parish, State

Eddy County, NM

12. CHECK APPROPRIATE BOX(ES) TO INDICATE NATURE OF NOTICE, REPORT, OR OTHER DATA

TYPE OF SUBMISSION

☒ Notice of Intent

☐ Subsequent Report

☐ Final Abandonment Notice

TYPE OF ACTION

☐ Acidize

☐ Alter Casing

☐ Casing Repair

☐ Change Plans

☐ Convert to Injection

☐ Deepen

☐ Fracture Treat

☐ New Construction

☐ Plug and Abandon

☐ Plug Back

☐ Production (Start/Resume)

☐ Reclamation

☐ Recomplete

☐ Temporarily Abandon

☐ Water Disposal

☐ Water Shut-Off

☐ Well Integrity

☒ Other Use flexible

choke & kill line

13. Describe Proposed or Completed Operation (clearly state all pertinent details, included estimated starting date of any proposed work and approximate duration thereof.

If the proposal is to deepen directionally or recompleat horizontally, give subsurface locations and measured and true vertical depths of all pertinent markers and zones. Attach the bond under which the work will be performed or provide the Bond No. on file with BLM/BIA. Required subsequent reports shall be filed within 30 days following completion of the involved operations. If the operation results in a multiple completion or recompleat in a new interval, a Form 3160-4 shall be filed once testing has been completed. Final Abandonment Notices shall be filed only after all requirements, including reclamation, have been completed, and the operator has determined that the site is ready for final inspection.)

Cimarex is requesting variance from onshore order 2 to use flexible choke and kill line due to rig design instead of hard choke line.

Line is approximately 20' long and has a 10000 psi working pressure with 15000 psi test pressure.

See attached spec sheet and BOP diagram.

14. I hereby certify that the foregoing is true and correct

Name (Printed/Typed)

Zeno Farris

Signature

*Zeno Farris*

Title

Manager Operations Administration

Date

March 7, 2006

THIS SPACE FOR FEDERAL OR STATE OFFICE USE

Approved by

Title

Date

Conditions of Approval, if any, are attached. Approval of this notice does not warrant or certify that the applicant holds legal or equitable title to those rights in the subject lease which would entitle the applicant to conduct operations thereon.

Office

MAR 22 2007

Title 18 U.S.C. Section 1001, makes it a crime for any person knowingly and willfully to make to any department or agency of the United States any false, fictitious or fraudulent statements or representations as to any matter within its jurisdiction.

FREDERICK WRIGHT  
PETROLEUM ENGINEER

(Instructions on reverse)



Midwest Hose  
& Specialty, Inc.

## Specification Sheet Choke & Kill Hose

The Midwest Hose & Specialty Choke & Kill hose is manufactured with only premium components. The reinforcement cables, inner liner and cover are made of the highest quality material to handle the tough drilling applications of today's industry. The end connections are available with API flanges, API male threads, hubs, hammer unions or other special fittings upon request. Hose assembly is manufactured to API 7K. This assembly is wrapped with fire resistant vermiculite coated fiberglass insulation, rated at 2000 degrees with stainless steel armor cover.

<b>Working Pressure:</b>	5,000 or 10,000 psi working pressure
<b>Test Pressure:</b>	10,000 or 15,000 psi test pressure
<b>Reinforcement:</b>	Multiple steel cables
<b>Cover:</b>	Stainless Steel Armor
<b>Inner Tube:</b>	Petroleum resistant, Abrasion resistant
<b>End Fitting:</b>	API flanges, API male threads, threaded or butt weld hammer unions, unbolt and other special connections
<b>Maximum Length:</b>	110 Feet
<b>ID:</b>	2-1/2", 3", 3-1/2", 4"
<b>Operating Temperature:</b>	-22 deg F to +180 deg F (-30 deg C to +82 deg C)

DRILLING OPERATIONS  
CHOKE MANIFOLD  
5M SERVICE

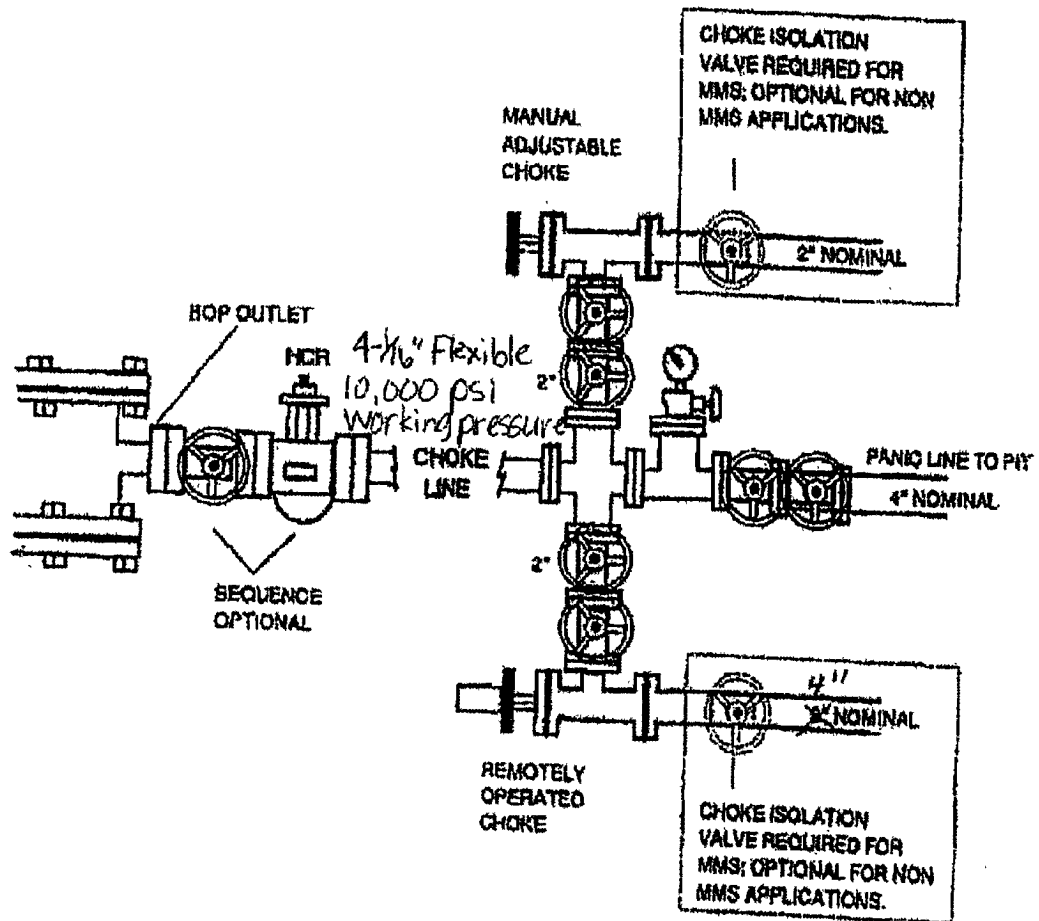


Exhibit E-1 – Choke Manifold Diagram  
**Crow Flats 7 Federal Com No. 4**  
 Cimarex Energy Co. of Colorado  
 7-16S-28E  
 1980' FSL & 660' FEL  
 Eddy County, NM