

District I

1625 N. French Dr., Hobbs, NM 88240

District II

1301 W. Grand Avenue, Artesia, NM 88210

District III

1000 Rio Brazos Road, Aztec, NM 87410

District IV

1220 S. St. Francis Dr., Santa Fe, NM 87505

State of New Mexico
Energy Minerals and Natural Resources

Form C-101

May 27, 2004

Oil Conservation Division SEP 20 2007

Submit to appropriate District Office

1220 South St. Francis Dr.

OCD-ARTESIA

☐ AMENDED REPORT

Santa Fe, NM 87505

APPLICATION FOR PERMIT TO DRILL, RE-ENTER, DEEPEN, PLUGBACK, OR ADD A ZONE

¹ Operator Name and Address Devon Energy Production Company, L. P. 20 North Broadway Oklahoma City, OK 73102-8260		² OGRID Number 6137
³ Property Code		⁴ API Number 30 - 015-34575
⁵ Property Name Spud 16 State		⁶ Well No. 6
⁹ Proposed Pool 1 Laguna Creek; Wolfcamp		¹⁰ Proposed Pool 2

Surface Location

UL or lot no	Section	Township	Range	Lot Idn	Feet from the	North/South line	Feet from the	East/West line	County
D	16	23 S	29 E		920	North	990	West	Eddy

⁸ Proposed Bottom Hole Location If Different From Surface

UL or lot no	Section	Township	Range	Lot Idn	Feet from the	North/South line	Feet from the	East/West line	County

Additional Well Information

¹¹ Work Type Code E	¹² Well Type Code G	¹³ Cable/Rotary R	¹⁴ Lease Type Code S	¹⁵ Ground Level Elevation 2964' GL
¹⁶ Multiple No	¹⁷ Proposed Depth 12,500'	¹⁸ Formation Wolfcamp Shale	¹⁹ Contractor	²⁰ Spud Date 5/27/06
Depth to Groundwater		Distance from nearest fresh water well		Distance from nearest surface water
Pit: Liner: Synthetic <input checked="" type="checkbox"/> _____ mls thick Clay <input type="checkbox"/> Pit Volume: _____ bbls Drilling Method: _____ Closed-Loop System <input type="checkbox"/> Fresh Water <input checked="" type="checkbox"/> Brine <input type="checkbox"/> Diesel/Oil-based <input type="checkbox"/> Gas/Air <input type="checkbox"/>				

²¹ Proposed Casing and Cement Program

Hole Size	Casing Size	Casing weight/foot	Setting Depth	Sacks of Cement	Estimated TOC
17 1/2"	13 3/8"	48# H-40	364'	388 sx C; 83 pit	
12 1/4"	9 5/8"	40# J-55	2975'	1100 sx C; 200 pit	
8 3/4"	7"	26# HCP-110H	10478'	2310 sx CLH	
6 1/8"	4 1/2"	13.5# P-110H	12500'	300 sx CLH	

²² Describe the proposed program. If this application is to DEEPEN or PLUG BACK, give the data on the present productive zone and proposed new productive zone. Describe the blowout prevention program, if any. Use additional sheets if necessary. **OBJECTIVE: Abandon Atoka, recompleat & test the Wolfcamp Shale.**

- MIRU WSU. Conduct safety meeting w/crew, including a summary discussion of this entire procedure. NU 5000 psi BOPE and test to full working pressure psi per company guidelines.
- Kill well if necessary. Unset production pkr & POH w/BHA and 2 3/8" production tbg.
- MIRU WLSU. NU lubricator/wireline BOPE rated to 10,000 psi and test to full working pressure. Run gauge ring and junk basket for 4 1/2"/13.5 ppf liner to 11700'.
- RIH w/CIBP & set @ 11,670' +/- . Correlate Schlumberger GR-CNL-LDT (7/17/06 strip attached). POH with setting tool.
- Dump bail 35' cmt on top of CIBP.
- Test csg/liner to 8000 psi.
- RIH w/3 1/8" csg gun to perf as follows @ 1 SPF, 120° phase: 11,143-11,456'. POOH. RD. WLSU. (Continued on attached Page 2)

²³ I hereby certify that the information given above is true and complete to the best of my knowledge and belief. I further certify that the drilling pit will be constructed according to NMOC guidelines ☐, a general permit ☐, or an (attached) alternative OCD-approved plan ☐.

Printed name: Judy A. Barnett

Title: Regulatory Analyst

E-mail Address: Judyth.Barnett@dmv.com

Date: 9/20/07

Phone: 405-228-8699

OIL CONSERVATION DIVISION

Approved by:

BRYAN G. ARANT

DISTRICT II GEOLOGIST

Title:

Approval Date: SEP 20 2007

Expiration Date: SEP 20 2008

Conditions of Approval Attached ☐

Spud 16 State 6

API# 30-015-34575

Page 2

Continued from Form C-101

8. RU B.J. Services to FRAC per BJ proposal (to follow).
9. Flow well back immediately at $\frac{1}{2}$ to 1 BPM through flowback separator and test until further notice. RD BJ.
10. PU & lubricate in a wireline re-entry guide, 1.81" R-profile nipple with no-go and pump-out plug, pup joint, 4 $\frac{1}{2}$ " wireline-set, tubing retrievable production pkr rated to 10k psi, and on-off tool w/ 1.81" F- profile on wireline. Position end of assembly at ~11,100' +/- and set pkr. POOH w/setting tool. RD WLSU.
11. RIH w/on-off shuck and 2-3/8"/4.7 ppf/ P-110/ EUE production tbg. Circulate tbg-csg annulus w/pkr fluid (2% KCl w/oxygen scavenger), then latch onto on-off tool.
12. NU 10,000 psi production tree and test. RD. WSU.
13. Pressure up to shear pump-out plug.
14. Swab well in if necessary and test.

DEVON ENERGY CORP SPL ST #6 (GAS)
LAGUNA SALADO Field, EDDY Co., NM Area: POTATO BASIN AF
920' FNL, 990' FWL, Sec 16, 23S 28E. Elev: 2981.0' (17.0' AGL)

Last updated by:
Jim Cromer 08/10/2006

PARTIAL SCHEMATIC (8400' - TD)

Surface Casing Record
13.375"/ 48.00#/ H-40/ 8RD @ 364'

Intermediate Casing Record
9.625"/ 40.00#/ J-55/ 8RD @ 2975'

Production Casing Record
7.00"/ 26.00#/ P110/ LTC @ 10478'

Production Liner Record
4.50"/ 13 50#/ P110/ 8RD @ 10170'-12501'

Tubing Record
2.375"/ 4.70#/ N-80/ EUE @ 11075'

Well History (spudded 05/27/2006):

7/06 - DC. Ran 7" csg set @ 10478'. Stage 2 cmt aborted - could not circ through DV tool. Set 13.5# HCP110 LTC liner @ 12,501'. TOL @ 10,169'. cmt w/300 sx CI H. Dress TOL and test to 1000 psi. Ran CBL in 7" csg, TOC @ 300'. PF ATKA 12273 - 76', 12137 - 47' and 12078 - 102' w/ 2 jsp, 120 phase. Ran pkr on tbg. TIH w/ 2-3/8" WL Re-entry guide, 2-3/8" X 1.78" "R" NIP, 1 jt 2-3/8" N-80, 4 1/2" X 2-3/8" Arrowset 1-XX pkr, 4 1/2" T-2 O/O tool w/ 1.81" F nip, 377 jt 2-3/8" N-80 tbg to 12,001'. Set pkr, ACDZ w/ 4k g 15% + 4000 gal CO2 + 70 1.3 SG BS. Flush w/ 2k G CO2. 7400# brk dn psi. MIN TP = 7250#, MAX = 7798#, ATP = 7450# @ 4 BPM. ISDP = 5369#, 5 min 5355#, 10 min 5348#. Open on 12/64 chk @ 5200#. Alternate flow, swab. Minimal gas and fluid entry.

Add pay 11,712 - 12012 (gross interval). RE-ACDZ Atoka Bank 12078 - 102' w/ 7k gal. ACDZ new perfs 11,712 - 12,012' w/ 4500g. Ran packer and production tubing.

7 000" csg @10478'
w/2310 sx

2 375" tbg @11075' (PKR. on-off tool w/ 1 81" p

PF 11143-11456'
(PROP)

11712-11766'
(ATKA)

12137-12147'
(ATKA)

PF 11806-12012' (ATKA)

PF 12078 -12102' (ATKA BK)

PF 12273-12276' (ATKA)

4 500" lnr 10170'
-12501' w/ 300 sx

Plugs:

CIBP @11635'
FLTC @12410'

Perf Detail

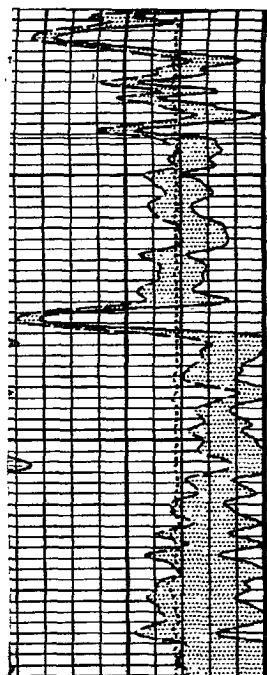
Interval	spf	Date
11143-11456'	1	/ /

TD = 12501'

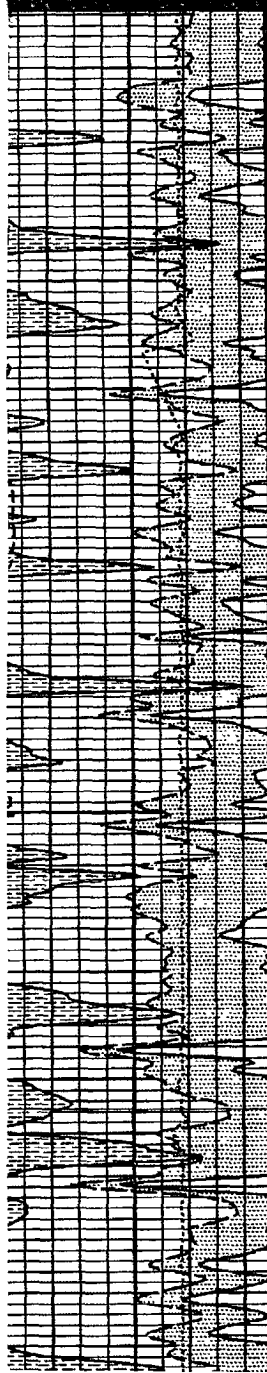
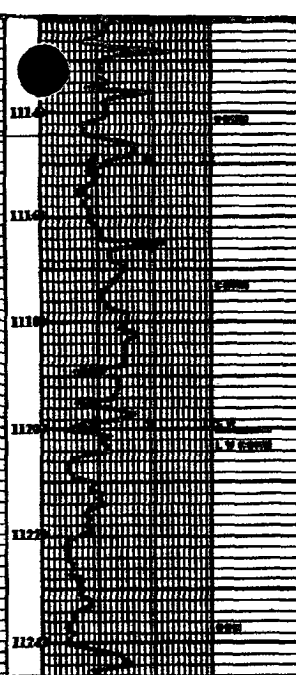
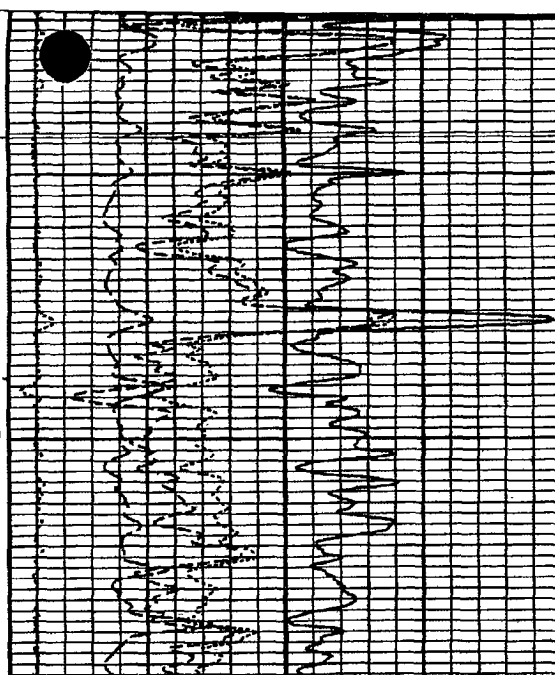
Comments: Atoka Bank offset dev. to 16-5

API# 30-015-34575

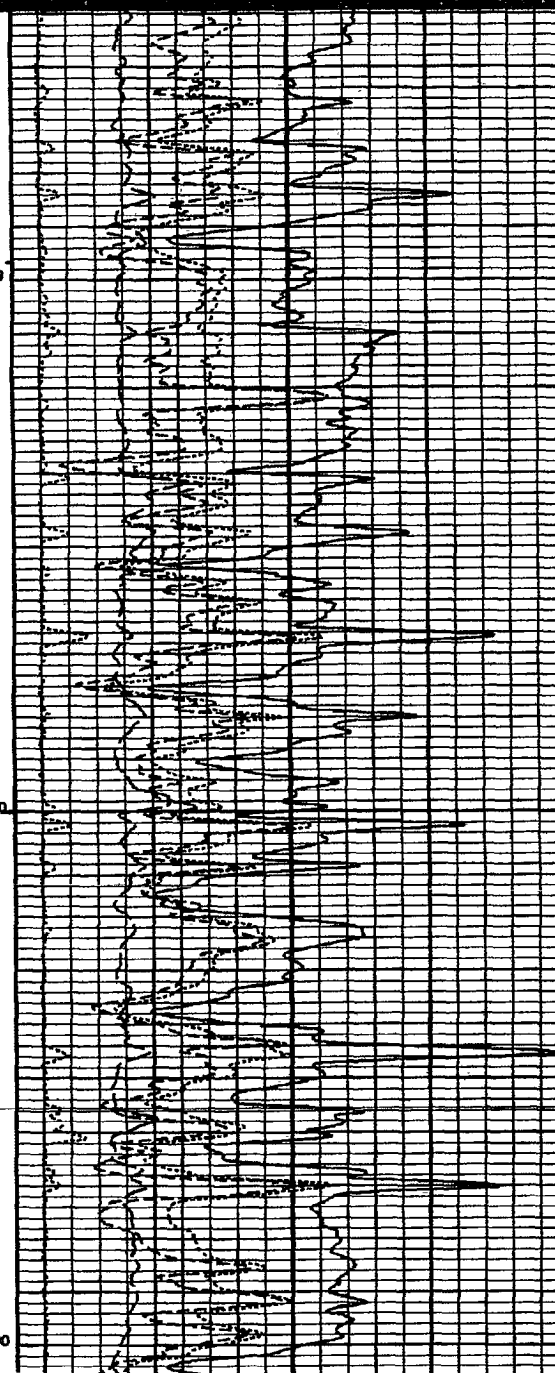
Current status: SHUT



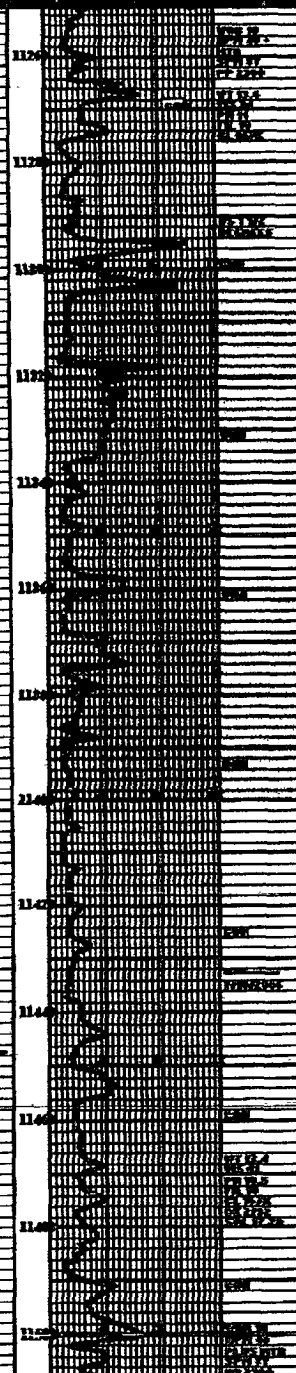
11200



11300



11400



11500

DISTRICT I
1625 N. French Dr., Hobbs, NM 88240

DISTRICT II
811 South First, Artesia, NM 88210

DISTRICT III
1000 Rio Brazos Rd., Aztec, NM 87410

DISTRICT IV
2040 South Pacheco, Santa Fe, NM 87505

State of New Mexico
Energy, Minerals and Natural Resources Department

Form C-102
Revised March 17, 1999

Submit to Appropriate District Office
State Lease - 4 Copies
Fee Lease - 3 Copies

OIL CONSERVATION DIVISION

2040 South Pacheco
Santa Fe, New Mexico 87504-2088

☐ AMENDED REPORT

WELL LOCATION AND ACREAGE DEDICATION PLAT

API Number 30-015-34575	Pool Code	Pool Name <i>Laguna Creek; Wolfcamp</i>
Property Code	Property Name SPUD "16" STATE	Well Number 6
OGRID No. 6137	Operator Name DEVON ENERGY PRODUCTION CO., L.P.	Elevation 2964'

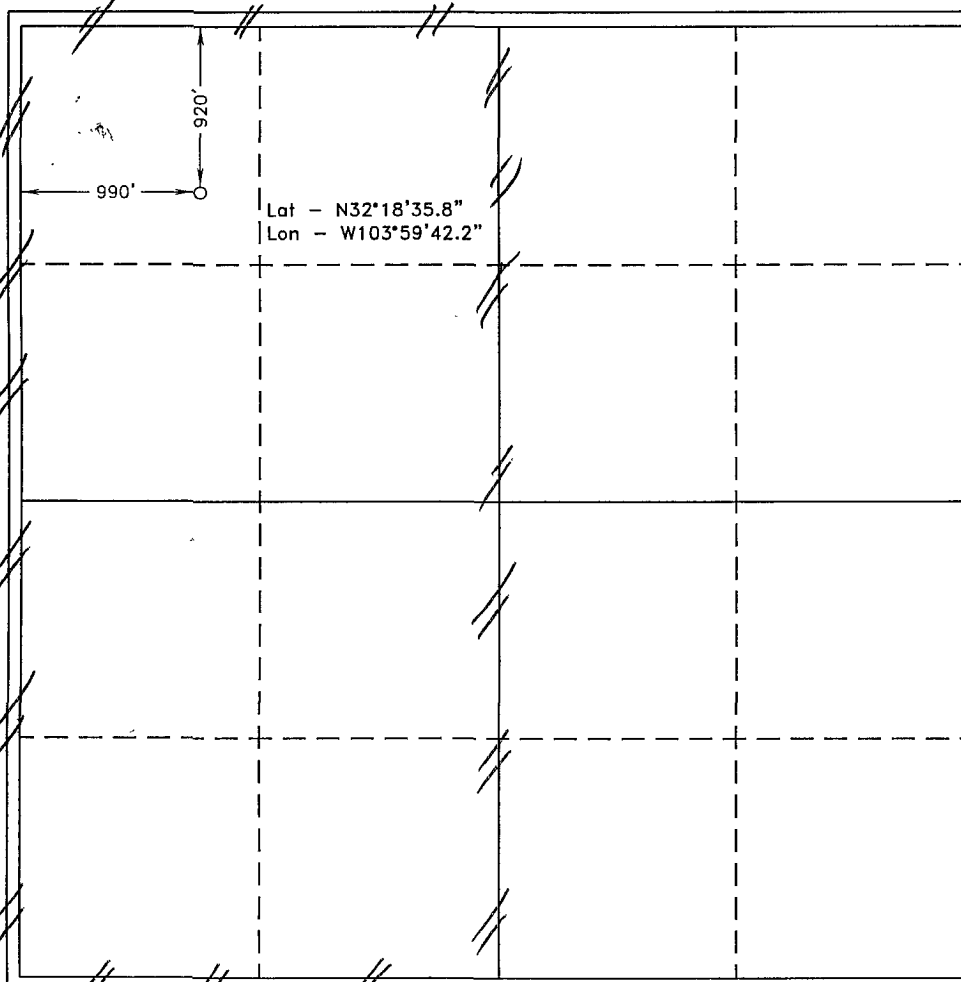
Surface Location

UL or lot No.	Section	Township	Range	Lot Idn	Feet from the	North/South line	Feet from the	East/West line	County
D	16	23 S	29 E		920	NORTH	990	WEST	EDDY

Bottom Hole Location If Different From Surface

UL or lot No.	Section	Township	Range	Lot Idn	Feet from the	North/South line	Feet from the	East/West line	County
Dedicated Acres 320	Joint or Infill	Consolidation Code	Order No.						

NO ALLOWABLE WILL BE ASSIGNED TO THIS COMPLETION UNTIL ALL INTERESTS HAVE BEEN CONSOLIDATED
OR A NON-STANDARD UNIT HAS BEEN APPROVED BY THE DIVISION



OPERATOR CERTIFICATION

I hereby certify the the information
contained herein is true and complete to the
best of my knowledge and belief.

[Signature]
Signature
Stephanie A. Ysasaga
Printed Name
Sr. Staff Engineering Tech
Title
2/10/06
Date

SURVEYOR CERTIFICATION

I hereby certify that the well location shown
on this plat was plotted from field notes of
actual surveys made by me or under my
supervision, and that the same is true and
correct to the best of my belief.

JAN 15 2006
Date Surveyed
Signature & Seal of
Professional Surveyor
7977
Certificate No. Gary L. Jones 7977
BASIN SURVEYS

SECTION 16, TOWNSHIP 23 SOUTH, RANGE 29 EAST, N.M.P.M.,
EDDY COUNTY, NEW MEXICO.

□
150' NORTH
OFF SET
2967.0'

DEVON ENERGY PRODUCTION CO., L.P.

SPUD "16" STATE #6

Elev. - 2964'

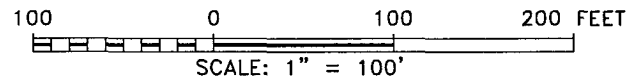
○

Lat.-N 32°18'35.8"
Long-W 104°59'42.2"

150' WEST
OFF SET □
2969.0'

□
150' EAST
OFF SET
2964.4'

150' SOUTH
OFF SET
2963.9' □



Directions to Location:

FROM THE JUNCTION OF US HWY 62/180 AND STATE
HWY 31, GO SOUTH ON HWY 31 FOR 0.4 MILE TO
UNITED SALT CORP LAKE FACILITY ROAD; THENCE
TAKE ROAD EAST THROUGH FACILITY TO LOCATION

BASIN SURVEYS P.O. BOX 1786 - HOBBS, NEW MEXICO

W.O. Number: 6174 Drawn By: K. GOAD

Date: 01-26-2006 Disk: KJG CD#4 - 6174A.DWG

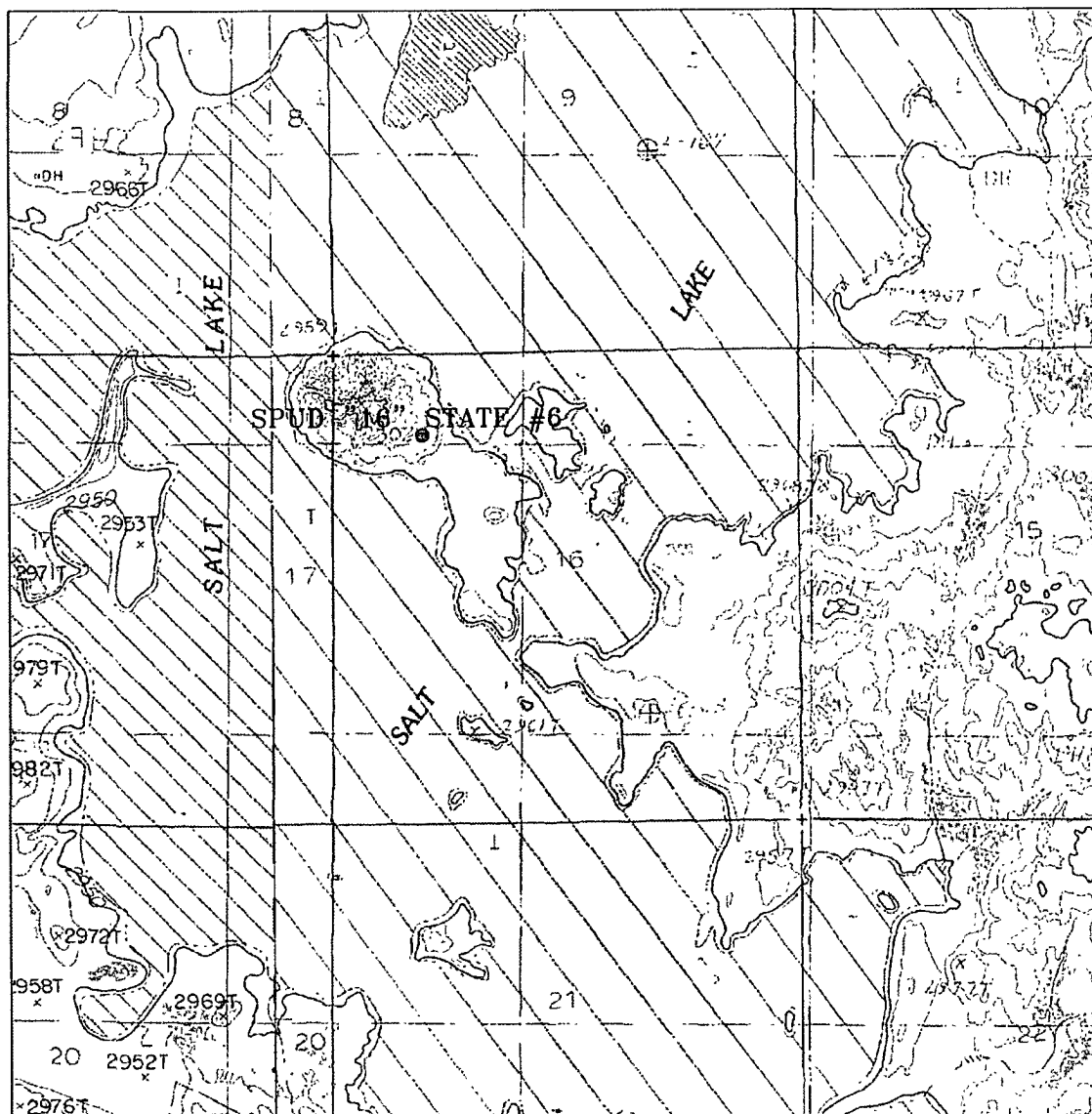
DEVON ENERGY PROD. CO., L.P.

REF: SPUD "16" STATE No. 6 / Well Pad Topo

THE SPUD "16" STATE No. 6 LOCATED 920' FROM
THE NORTH LINE AND 990' FROM THE WEST LINE OF
SECTION 16, TOWNSHIP 23 SOUTH, RANGE 29 EAST,

N.M.P.M., EDDY COUNTY, NEW MEXICO.

Survey Date: 01-24-2006 Sheet 1 of 1 Sheets



SPUD "16" STATE #6
 Located at 920' FNL AND 990' FWL
 Section 16, Township 23 South, Range 29 East,
 N.M.P.M., Eddy County, New Mexico.

basin
surveys

focused on excellence
 in the oilfield

P.O. Box 1786
 1120 N. West County Rd.
 Hobbs, New Mexico 88241
 (505) 393-7316 - Office
 (505) 392-3074 - Fax
 basinsurveys.com

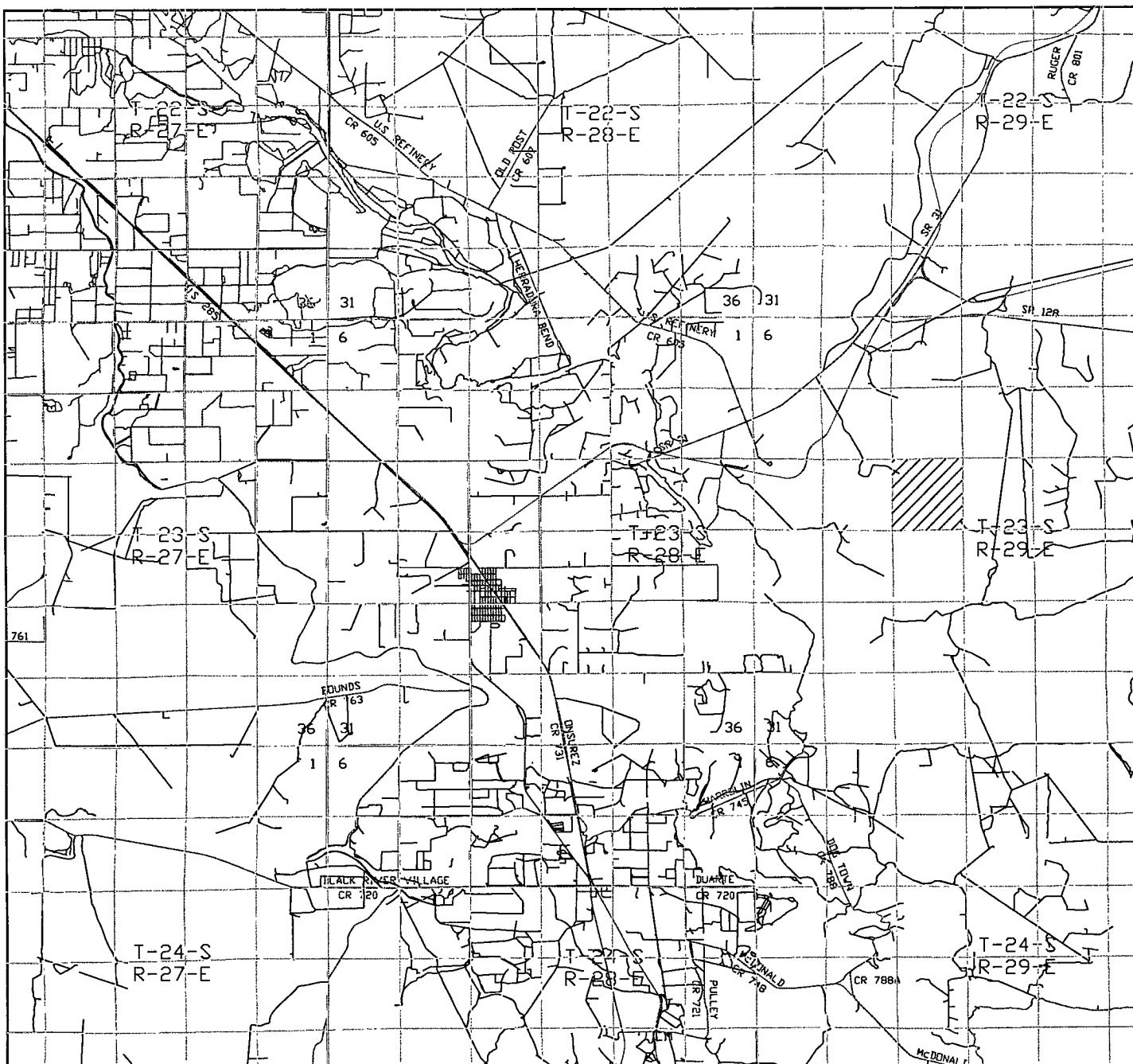
W.O. Number: 6174AA - KJG CD#4

Survey Date: 01-24-2006

Scale: 1" = 2000'

Date: 01-26-2006

DEVON ENERGY
 PROD. CO., L.P.



SPUD "16" STATE #6

Located at 920' FNL AND 990' FWL
Section 16, Township 23 South, Range 29 East,
N.M.P.M., Eddy County, New Mexico.

basin
surveys
focused on excellence
in the oilfield

P.O. Box 1786
1120 N. West County Rd.
Hobbs, New Mexico 88241
(505) 393-7316 - Office
(505) 392-3074 - Fax
basinsurveys.com

W.O. Number: 6174AA - KJG CD#4

Survey Date: 01-24-2006

Scale: 1" = 2 MILES

Date: 01-26-2006

DEVON ENERGY
PROD. CO., L.P.