



July 2, 2007

HAND-DELIVERED

Mark E. Fesmire, P. E.
Director
Oil Conservation Division
New Mexico Department of Energy,
Minerals and Natural Resources
1220 South Saint Francis Drive
Santa Fe, New Mexico 87505

RECEIVED
2007 JUL 2 PM 2 19

Re: Application of EOG Resources, Inc. for Administrative Approval of the Simultaneous Dedication of the N/2 of Section 28, Township 17 South, Range 24 East, N.M.P.M., Eddy County, New Mexico to its proposed Trinity A 28 State Well No. 1H and the existing Trinity A 28 State Well No. 2H.

Dear Mr. Fesmire:

EOG Resources, Inc. is the operator of a standard 320-acre spacing unit in the Collins Ranch-Wolfcamp Gas Pool (**Pool Code 75010**) comprised of the N/2 of Section 28, Township 17 South, Range 24 East, N.M.P.M., Eddy County, New Mexico. This spacing unit is dedicated to EOG's Trinity A 28 State Well No. 2H which has been horizontally drilled and produces from the Wolfcamp formation.

EOG seeks administrative approval of the simultaneous dedication of this standard 320-acre gas spacing unit to the following two horizontal gas wells:

- A. the existing TRINITY A 28 STATE Well No. 2H (API No. 30-015-35659) horizontally drilled from a surface location 1880 feet from the North line and 660 feet from the East line to a proposed end point or bottomhole location 1880 feet from the North line and 660 feet from the West line of said Section 28; and
- B. the proposed TRINITY A 28 STATE Well No. 1H (API No. 30-015 - 35680) to be horizontally drilled from a surface location 760 feet from the North line and 660 feet from the East line to a proposed end point or bottomhole location 760 feet from the North line and 660 feet from the West line of said Section 28.

HOLLAND & HART^{LLP}



Both the penetration point and the bottomhole location for the Trinity A 28 State Well No. 2H are at a standard location in the Wolfcamp formation pursuant to Division Rules 104.C (2) (a) and 111.A (7). EOG now intends to horizontally drill and complete its proposed Trinity A 28 State Well No. 1H to be drilled to the targeted subsurface end-point or bottomhole location 760 feet from the North line and 660 feet from the West line (Unit D) of Section 28. EOG proposes to drill this well in compliance with the setback requirements of Division Rules 104.C(2)(b) and 111.A(7) for deep gas wells in southeast New Mexico.

Attached hereto as **Exhibit A** is a copy of Division Form C-102 for this well that shows the proposed surface and bottomhole location of the well.

Exhibit B is a map of offset operators around the spacing unit in Section 28. **Exhibit C** is a list of affected parties as defined by Division Rules. As required by Rule 1210, a copy of this application (with attachments) has been sent to those affected parties in accordance with Rule 1207(A)(5) and they have been advised that if they have an objection to this application it must be filed in writing with the Division's Santa Fe office within twenty days from the date this notice was sent.

The simultaneous dedication of the N/2 of said Section 28 to the Trinity A 28 State Well Nos. 1H and 2H will afford EOG the opportunity to efficiently produce the Wolfcamp formation under this spacing unit. EOG's proposed simultaneous dedication of these wells does not exceed the number of wells allowed by Division Rule for this spacing unit.

Your attention to this application is appreciated.

Sincerely,

Ocean Munds-Dry
Attorney for EOG Resources, Inc.

Enclosures

District I
1625 N. French Dr., Hobbs, NM 88240
District II
1301 W. Grand Avenue, Artesia, NM 88210
District III
1000 Rio Brazos Rd., Aztec, NM 87410
District IV
1220 S. St. Francis Dr., Santa Fe, NM 87505

State of New Mexico
Energy, Minerals & Natural Resources Department
OIL CONSERVATION DIVISION
1220 South St. Francis Dr.
Santa Fe, NM 87505

Form C-102
Revised October 12, 2005
Submit to Appropriate District Office
State Lease- 4 Copies
Fee Lease- 3 Copies

☐ AMENDED REPORT

WELL LOCATION AND ACREAGE DEDICATION PLAT

API Number 30-015-35680	Pool Code 75010	Pool Name COLLINS RANCH; WOLFCAMP (GAS)
Property Code 36534	Property Name TRINITY "A" 28 STATE	Well Number 1H
OCRD No. 7377	Operator Name EOG RESOURCES, INC.	Elevation 3791'

Surface Location

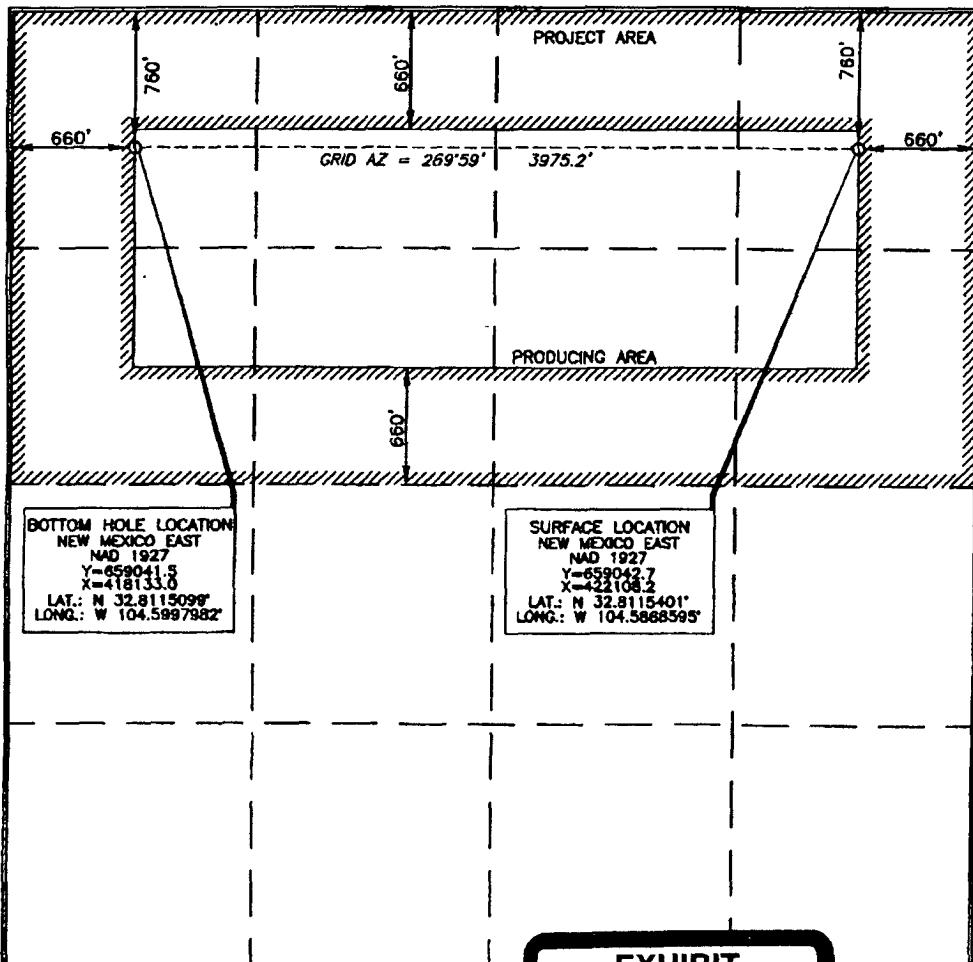
UL or lot no.	Section	Township	Range	Lot Idn	Feet from the	North/South line	Feet from the	East/West line	County
A	28	17 SOUTH	24 EAST, N.M.P.M.		780'	NORTH	660'	EAST	EDDY

Bottom Hole Location If Different From Surface

UL or lot no.	Section	Township	Range	Lot Idn	Feet from the	North/South line	Feet from the	East/West line	County
D	28	17 SOUTH	24 EAST, N.M.P.M.		780'	NORTH	660'	WEST	EDDY

Dedicated Acres 320	Joint or Infill	Consolidation Code	Order No.
-------------------------------	-----------------	--------------------	-----------

No allowable will be assigned to this completion until all interests have been consolidated or a non-standard unit has been approved by the division.



OPERATOR CERTIFICATION

I hereby certify that the information contained herein is true and complete to the best of my knowledge and belief, and that this organization either owns a working interest or unleased mineral interest in the land including the proposed bottom hole location or has a right to drill this well at this location pursuant to a contract with an owner of such a mineral or working interest, or to a voluntary pooling agreement or a compulsory pooling order heretofore entered by the division.

Don G. Glanton 6/14/07
Signature Date

Donny G. Glanton

Printed Name

SURVEYOR CERTIFICATION

I hereby certify that the well location shown on this plat was plotted from field notes of actual survey made by me or under my supervision, and that the same is true and correct to the best of my belief.

Ferry G. Abel 6/14/07
Date of Survey

Signature and Seal of Professional Surveyor

Ferry G. Abel 6/14/07
Certificate Number 15079

WOP 070529WL-a (N)

EXHIBIT

A

District I
1825 N. French Dr., Hobbs, NM 88240
District II
1301 W. Grand Avenue, Artesia, NM 88210
District III
1000 Rio Brazos Rd., Aztec, NM 87410
District IV
1220 S. St. Francis Dr., Santa Fe, NM 87505

State of New Mexico
Energy, Minerals & Natural Resources Department
OIL CONSERVATION DIVISION
1220 South St. Francis Dr.
Santa Fe, NM 87505

Form C-102
Revised October 12, 2005
Submit to Appropriate District Office
State Lease- 4 Copies
Fee Lease- 3 Copies

☐ AMENDED REPORT

WELL LOCATION AND ACREAGE DEDICATION PLAT

API Number 30-015-35659	Pool Code 75010	Pool Name COLLINS RANCH; WOLFCAMP (GAS)
Property Code 34534	Property Name TRINITY "A" 28 STATE	Well Number 2H
OGRD No. 7377	Operator Name EOG RESOURCES, INC.	Elevation 3782'

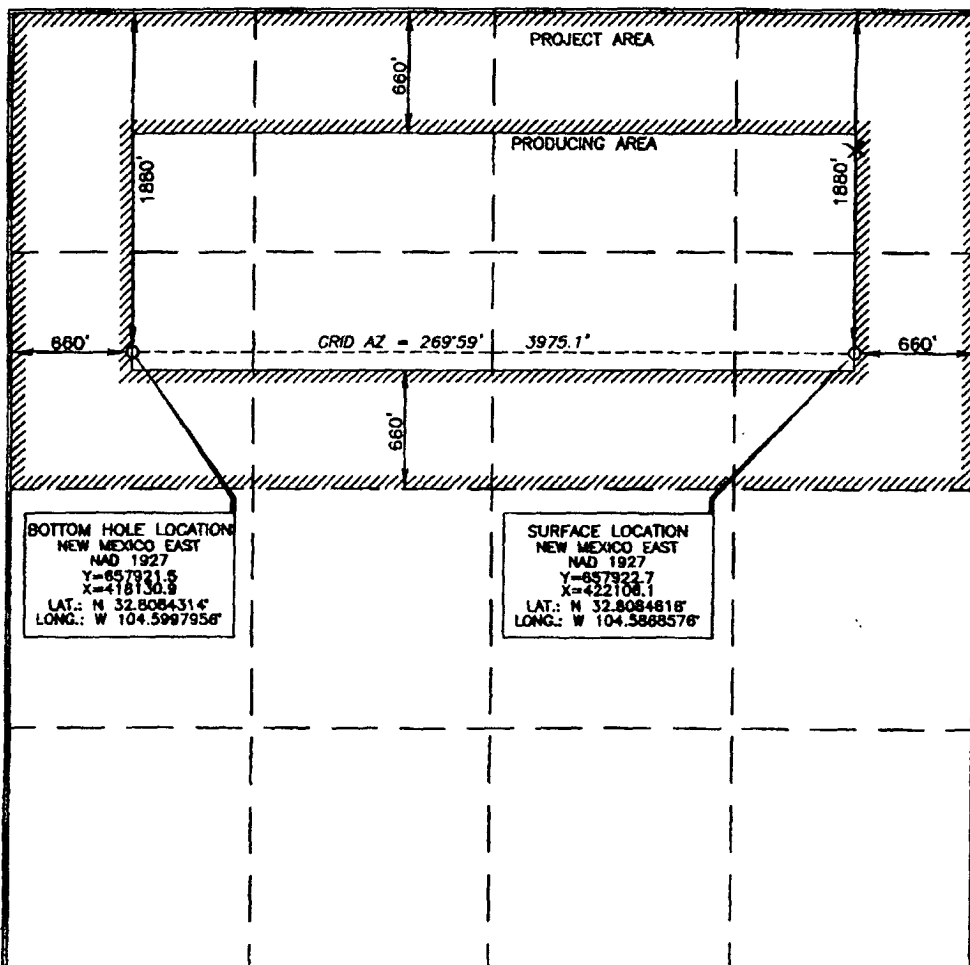
Surface Location

UL or lot no.	Section	Township	Range	Lot Idn	Feet from the	North/South line	Feet from the	East/West line	County
H	28	17 SOUTH	24 EAST, N.M.P.M.		1880'	NORTH	660'	EAST	EDDY

Bottom Hole Location If Different From Surface

UL or lot no.	Section	Township	Range	Lot Idn	Feet from the	North/South line	Feet from the	East/West line	County
E	28	17 SOUTH	24 EAST, N.M.P.M.		1880'	NORTH	660'	WEST	EDDY
Dedicated Acres 320		Joint or Infill	Consolidation Code	Order No.					

No allowable will be assigned to this completion until all interests have been consolidated or a non-standard unit has been approved by the division.



OPERATOR CERTIFICATION

I hereby certify that the information contained herein is true and complete to the best of my knowledge and belief, and that this organization either owns a working interest or unleased mineral interest in the land including the proposed bottom hole location or has a right to drill this well at this location pursuant to a contract with an owner of such a mineral or working interest, or to a voluntary pooling agreement or a compulsory pooling order heretofore entered by the division.

Donny G. Glanton 6/6/2007
Signature Date

Donny G. Glanton
Printed Name

SURVEYOR CERTIFICATION

I hereby certify that the well location shown on this plat was plotted from field notes or actual surveys made by me or under my supervision, and that the same is true and correct to the best of my belief.

Ferry G. Abel 6/6/2007
Date of Survey

Ferry G. Abel
Signature and Seal of Professional Surveyor

Certificate Number 15079

WOF 070529WL-b (A)

OFFSETS IN SECTION 28

(20)	Continental Parallel, etc First Row	(21)	LCX	(22) EOG
	D	C	B	A
	Trinity A 28			
LCX	E	F	G	H
(29)	L	(28) K 28	J	I
	M	N	O	P

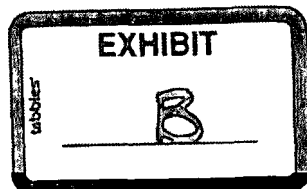


Exhibit C

**Application of EOG Resources, Inc.
Simultaneous Dedication of
N/2 of Section 28, Township 17 South, Range 24 East, NMPM
Eddy County, New Mexico**

LCX Energy, LLC
101 N. Marenfeld Suite 200
Midland, Texas 79701

Continental Land Resources, LLC
P.O. Box 2691
Roswell, NM 88202

Capstone Oil & Gas Company
P.O. Box 10187
Midland, Texas 79702

Parallel Petroleum
Post Office Box 10587
Midland, TX 79702

Elger Exploration, Inc.
P.O. Box 2623
Midland, Texas 79702-2623

CMW Interests, Inc.
24 Smith Road, Suite 405
Midland, Texas 79705

First Roswell Co.
P.O. Box 1797
Roswell, New Mexico 88202