



March 5, 2007

HAND-DELIVERED

Mark E. Fesmire, P. E.
Director
Oil Conservation Division
New Mexico Department of Energy,
Minerals and Natural Resources
1220 South Saint Francis Drive
Santa Fe, New Mexico 87505



Re: Application of EOG Resources, Inc. for Administrative Approval of the Simultaneous Dedication of the E/2 of Section 5, Township 16 South, Range 25 East, N.M.P.M., Eddy County, New Mexico to its proposed Tiber B 5 Fee Well No. 2H and the existing Tiber B 5 Fee Well No. 1H.

Dear Mr. Fesmire:

EOG Resources, Inc. is the operator of a standard 320-acre spacing unit in the Cottonwood Creek-Wolfcamp West Gas Pool (**Pool Code 75260**) comprised of the E/2 of Section 5, Township 16 South, Range 25 East, N.M.P.M., Eddy County, New Mexico. This spacing unit is dedicated to EOG's Tiber B 5 Fee Well No. 1H which has been horizontally drilled and produces from the Wolfcamp formation.

EOG seeks administrative approval of the simultaneous dedication of this standard 320-acre gas spacing unit to the following two horizontal gas wells:

- A. the existing **Tiber B 5 Fee Well No. 1H (API No. 30-015-34989)** horizontally drilled from a surface location 187 feet from the South line and 2239 feet from the East line to a proposed end point or bottomhole location 2448 feet from the North line and 1880 feet from the East line of said Section 5; and
- B. the proposed **Tiber B 5 Fee Well No. 2H (API No. 30-015 -34990)** to be horizontally drilled from a surface location 190 feet from the South line and 760 feet from the East line to a proposed end point or bottomhole location 2448 feet from the North line and 760 feet from the East line of said Section 5.



Both the penetration point and the bottomhole location for the Tiber B 5 Fee Well No. 1H are at a standard location in the Wolfcamp formation pursuant to Division Rules 104.C (2) (a) and 111.A (7). EOG now intends to horizontally drill and complete its proposed Tiber B 5 Fee Well No. 2H to be drilled to the targeted subsurface end-point or bottomhole location, 2448 feet from the North line and 760 feet from the East line (Lot 9) of Section 5. EOG proposes to drill this well in compliance with the set-back requirements of Division Rules 104.C(2)(b) and 111.A(7) for deep gas wells in southeast New Mexico.

Attached hereto as **Exhibit A** is a copy of Division Form C-102 for this well that shows the proposed surface and bottomhole location of the well.

Exhibit B is a map of offset operators around the spacing unit in Section 5. **Exhibit C** is a list of affected parties as defined by Division Rules. As required by Rule 1210, a copy of this application (with attachments) has been sent to those affected parties in accordance with Rule 1207(A)(5) and they have been advised that if they have an objection to this application it must be filed in writing with the Division's Santa Fe office within twenty days from the date this notice was sent.

The simultaneous dedication of the E/2 of said Section 5 to the Tiber B 5 Fee Well Nos. 1H and 2H will afford EOG the opportunity to efficiently produce the Wolfcamp formation under this spacing unit. EOG's proposed simultaneous dedication of these wells does not exceed the number of wells allowed by Division Rule for this spacing unit.

Your attention to this application is appreciated.

Sincerely,

A handwritten signature in black ink that reads "Ocean Munds-Dry".

Ocean Munds-Dry
Attorney for EOG Resources, Inc.

Enclosures

March 5, 2007

CERTIFIED MAIL
RETURN RECEIPT REQUESTED

AFFECTED INTEREST OWNERS

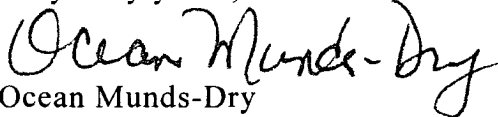
Re: Application of EOG Resources, Inc., for simultaneous dedication,
Eddy County, New Mexico.

Ladies and Gentlemen:

This letter is to advise you that EOG Resources, Inc. has filed the enclosed application with the New Mexico Oil Conservation Division seeking the simultaneous dedication of the proposed Tiber B 5 Fee Well No. 2H to be drilled from a surface location 190 feet from the South line and 760 feet from the East line and a bottomhole location 2448 feet from the North line and 760 feet from the East line and the existing Tiber B 5 Fee Well No. 1H drilled from a surface location 187 feet from the South line and 2239 feet from the East line and a bottomhole location 2448 feet from the North line and 1880 feet from the East line to the E/2 of Section 5, Township 16 South, Range 25 East, NMPM, Eddy County, New Mexico.

As an owner of an interest that may be affected by the proposed well, you may object to this application. Objections must be filed in writing within twenty days from this date at the Division's Santa Fe office that is located at 1220 South Saint Francis Drive, Santa Fe, New Mexico. 87505. If no objection is received within this twenty-day period, this application for an unorthodox well location may be approved.

Very truly yours,


Ocean Munds-Dry
ATTORNEY FOR EOG RESOURCES, INC.

Enclosures

Exhibit C

**Application of EOG Resources, Inc.
Simultaneous Dedication of
E/2 of Section 5, Township 16 South, Range 25 East, NMPM
Eddy County, New Mexico**

Yates Petroleum Corporation
105 South Fourth Street
Artesia, New Mexico 88210

LCX Energy, LLC
101 N. Marenfeld Suite 200
Midland, Texas 79701

Capstone Oil & Gas Company
P.O. Box 10187
Midland, Texas 79702

CMW Interests, Inc.
24 Smith Road, Suite 405
Midland, Texas 79705

Elger Exploration, Inc.
P.O. Box 2623
Midland, Texas 79702-2623

Parallel Petroleum
Post Office Box 10587
Midland, Texas 79702

District I
1625 N. French Dr., Hobbs, NM 88240
District II
1301 W. Grand Avenue, Artesia, NM 88210
District III
1000 Rio Brazos Rd., Aztec, NM 87410
District IV
1220 S. St. Francis Dr., Santa Fe, NM 87505

State of New Mexico
Energy, Minerals & Natural Resources Department
OIL CONSERVATION DIVISION
1220 South St. Francis Dr.
Santa Fe, NM 87505

Form C-102
Revised October 12, 2005
Submit to Appropriate District Office
State Lease- 4 Copies
Fee Lease- 3 Copies

☐ AMENDED REPORT

WELL LOCATION AND ACREAGE DEDICATION PLAT

API Number 30-015-34989	Pool Code 75250	Pool Name Cottonwood Creek; Wolfcamp (gas)
Property Code	Property Name TIBER B 5 FEE	Well Number 1H
OGRD No. 7377	Operator Name EOG RESOURCES INC.	Elevation 3507'

Surface Location

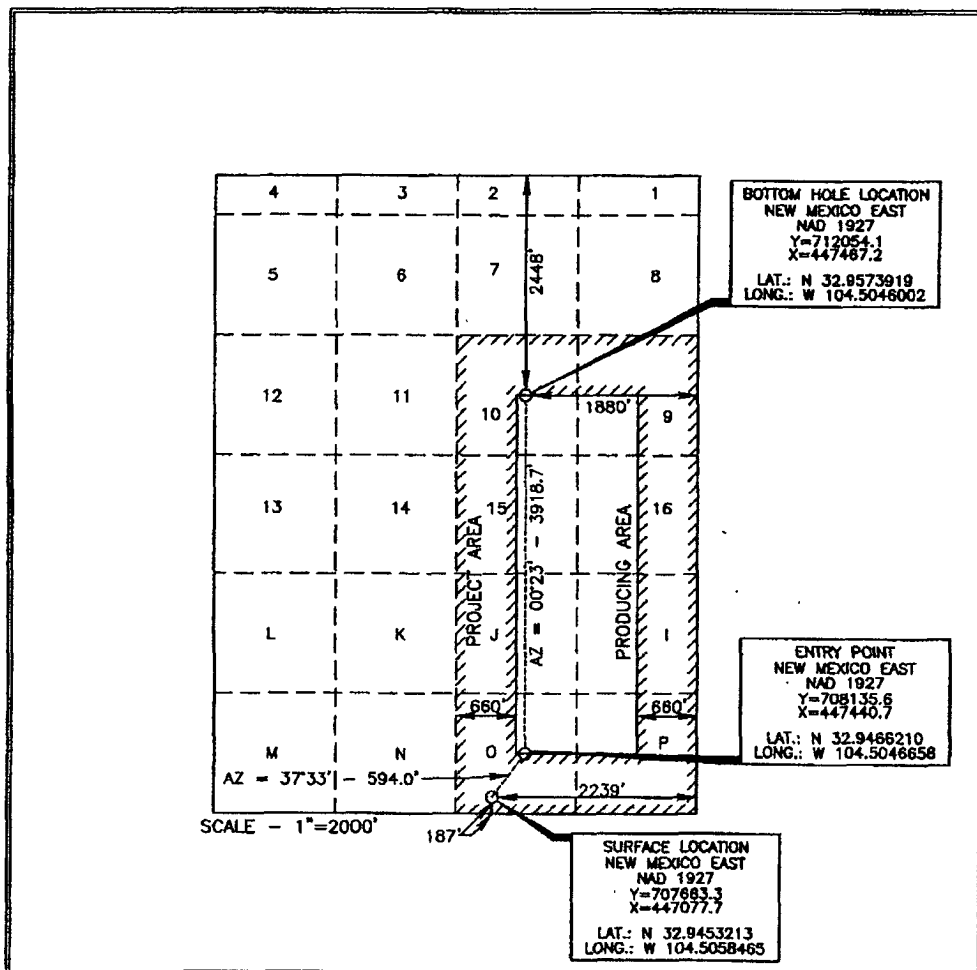
UL or lot no.	Section	Township	Range	Lot Idn	Feet from the	North/South line	Feet from the	East/West line	County
0	5	16 SOUTH	25 EAST, N.M.P.M.		187	SOUTH	2239	EAST	EDDY

Bottom Hole Location If Different From Surface

UL or lot no.	Section	Township	Range	Lot Idn	Feet from the	North/South line	Feet from the	East/West line	County
10	5	16 SOUTH	25 EAST, N.M.P.M.		2448	NORTH	1880	EAST	EDDY

Dedicated Acres 320	Joint or Infill	Consolidation Code	Order No.
-------------------------------	-----------------	--------------------	-----------

No allowable will be assigned to this completion until all interests have been consolidated or a non-standard unit has been approved by the division.



OPERATOR CERTIFICATION

I hereby certify that the information contained herein is true and complete to the best of my knowledge and belief, and that this organization either owns a working interest or unleased mineral interest in the land including the proposed bottom hole location or has a right to drill this well at this location pursuant to a contract with an owner of such a mineral or working interest, or to a voluntary pooling agreement or a compulsory pooling order heretofore entered by the division.

Donny G. Glanton 6/26/06
Signature Date

Donny G. Glanton
Printed Name

SURVEYOR CERTIFICATION

I hereby certify that the well location shown on this plat was plotted from field notes of a survey made by me or under my supervision, and that the same is true and correct to the best of my belief.

Terry J. Paul
Date of Survey JUN 13, 2006
Signature and Seal of Professional Surveyor
Certificate Number 15079

WO# 060604WL_b (A)

EXHIBIT A

District I
1625 N. French Dr., Hobbs, NM 88240
District II
1301 W. Grand Avenue, Artesia, NM 88210
District III
1000 Rio Brazas Rd., Aztec, NM 87410
District IV
1220 S. St. Francis Dr., Santa Fe, NM 87505

State of New Mexico
Energy, Minerals & Natural Resources Department
OIL CONSERVATION DIVISION
1220 South St. Francis Dr.
Santa Fe, NM 87505

Form C-102
Revised October 12, 2005
Submit to Appropriate District Office
State Lease- 4 Copies
Fee Lease- 3 Copies

☐ AMENDED REPORT

WELL LOCATION AND ACREAGE DEDICATION PLAT

API Number 30-015-34990	Pool Code 75250	Pool Name Cottonwood Creek; Wolfcamp (Gas)
Property Code	Property Name TIBER B 5 FEE	Well Number 2H
OGRID No. 7377	Operator Name EOG RESOURCES INC.	Elevation 3504'

Surface Location

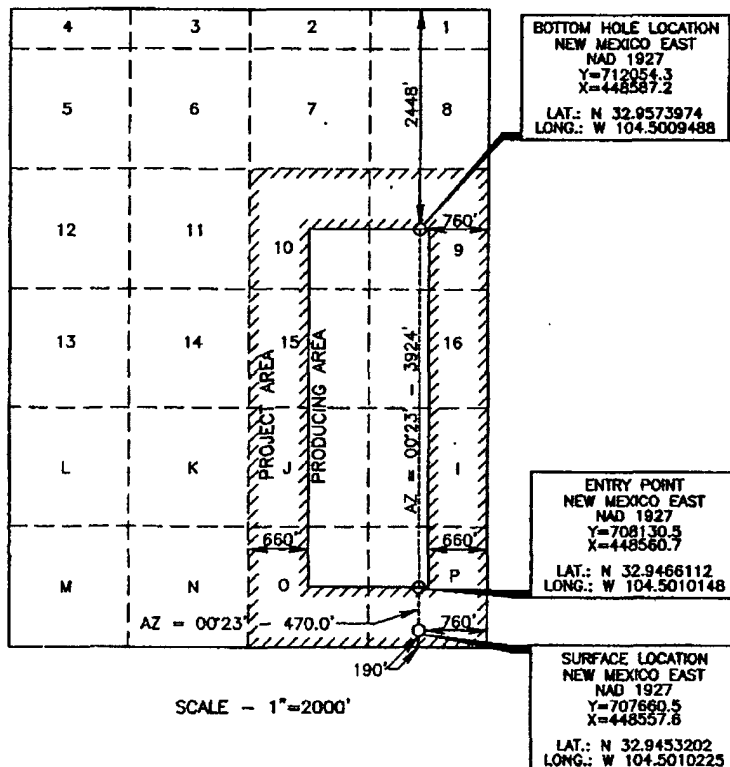
UL or lot no.	Section	Township	Range	Lot Idn	Feet from the	North/South line	Feet from the	East/West line	County
P	5	16 SOUTH	25 EAST, N.M.P.M.		190	SOUTH	760	EAST	EDDY

Bottom Hole Location If Different From Surface

UL or lot no.	Section	Township	Range	Lot Idn	Feet from the	North/South line	Feet from the	East/West line	County
9	5	16 SOUTH	25 EAST, N.M.P.M.		2448	NORTH	760	EAST	EDDY

Dedicated Acres 320	Joint or Infill	Consolidation Code	Order No.
-------------------------------	-----------------	--------------------	-----------

No allowable will be assigned to this completion until all interests have been consolidated or a non-standard unit has been approved by the division.



OPERATOR CERTIFICATION

I hereby certify that the information contained herein is true and complete to the best of my knowledge and belief, and that this organization either owns a working interest or unleased mineral interest in the land including the proposed bottom hole location or has a right to drill this well at this location pursuant to a contract with an owner of such a mineral or working interest, or to a voluntary pooling agreement or a compulsory pooling order heretofore entered by the division.

Donny G. Glanton 6/26/06
Signature Date

Donny G. Glanton
Printed Name

SURVEYOR CERTIFICATION

I hereby certify that the well location shown on this plat was plotted from field notes or actual surveys made by me or under my supervision, and that the same is true and correct to the best of my belief.

Terry G. Asel
Date of Survey 13, 2006

Signature and Seal of Professional Surveyor

Terry G. Asel
Certificate Number 15079

WD# 060604WL_c (LA)

OFFSETS IN SECTION 5

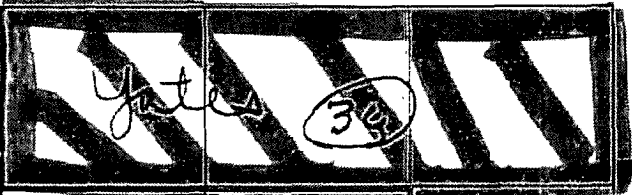
EOG (35)					
	D	C	B	A	
	E	F	G	H	
(6)	EOG (5)	Tiber B5			(4)
	L (+WIO ^s)	K	J		EOG
	M	N	O	P	
(7) EOG		EOG (8) (+WIO ^s)			EOG (9)

EXHIBIT B