



OCD-ARTESIA

DEC 11 2007

FORM APPROVED  
OMB No. 1004-0137  
Expires March 31, 2007UNITED STATES  
DEPARTMENT OF THE INTERIOR  
BUREAU OF LAND MANAGEMENT

OCD-ARTESIA

## APPLICATION FOR PERMIT TO DRILL OR REENTER

1a. Type of work: <input type="checkbox"/> DRILL <input checked="" type="checkbox"/> REENTER		5. Lease Serial No. NM-100558	
1b. Type of Well: <input checked="" type="checkbox"/> Oil Well <input type="checkbox"/> Gas Well <input type="checkbox"/> Other <input checked="" type="checkbox"/> Single Zone <input type="checkbox"/> Multiple Zone		6. If Indian, Allottee or Tribe Name -----	
2. Name of Operator RKI EXPLORATION & PRODUCTION, LLC. (PAT McCOLLOM 405-996-5748)		7. If Unit or CA Agreement, Name and No. -----	
3a. Address 3817 N. W. EXPRESSWAY SUITE 950 OKLAHOMA CITY, OK. 73112		8. Lease Name and Well No. SUN "10" FEDERAL # 1	
3b. Phone No. (include area code) 405-996-5748		9. API Well No. 30-015-25298	
4. Location of Well (Report location clearly and in accordance with any State requirements.) At surface 660' FSL & 660' FWL SECTION 10 T26S-R30E At proposed prod. zone SAME Carlsbad Controlled Water Basin		10. Field and Pool, or Exploratory BRUSHY DRAW-DELAWARE EAST	
14. Distance in miles and direction from nearest town or post office* Approximately 17 miles Southeast of Malaga New Mexico		11. Sec., T. R. M. or Blk. and Survey or Area SECTION 10 T27S-R30E	
15. Distance from proposed* location to nearest property or lease line, ft. (Also to nearest drig. unit line, if any) 660'	16. No. of acres in lease 640	17. Spacing Unit dedicated to this well 40	
18. Distance from proposed location* to nearest well, drilling, completed, applied for, on this lease, ft. NA	19. Proposed Depth 6420'	20. BLM/BIA Bond No. on file NMB000460	
21. Elevations (Show whether DF, KDB, RT, GL, etc.) 3112' GL	22. Approximate date work will start* WHEN APPROVED	23. Estimated duration 30 days	
24. Attachments			

The following, completed in accordance with the requirements of Onshore Oil and Gas Order No 1, shall be attached to this form:

- |   |  |
|---|--|
| 1. Well plat certified by a registered surveyor.  | 4. Bond to cover the operations unless covered by an existing bond on file (see item 20 above).    |
| 2. A Drilling Plan.   | 5. Operator certification  |
| 3. A Surface Use Plan (if the location is on National Forest System Lands, the SUPO shall be filed with the appropriate Forest Service Office). | 6. Such other site specific information and/or plans as may be required by the authorized officer. |

25. Signature 	Name (Printed/Typed) Joe T. Janica	Date 10/15/07
Title Agent		
Approved by (Signature) /s/ Don Peterson	Name (Printed/Typed) /s/ Don Peterson Joe T. Janica	Date DEC - 7 2007
Title FIELD MANAGER		
Office CARLSBAD FIELD OFFICE		

Application approval does not warrant or  
conduct operations thereon.  
Conditions of approval, if any, are attachedTitle 18 U.S.C. Section 1001 and Title 43 U.S.C.  
states any false, fictitious or fraudulent statement**If earthen pits are used in  
association with the drilling of this  
well, an OCD pit permit must be  
obtained prior to pit construction.**

APPROVAL FOR TWO YEARS

and willfully to make any document or agency of the United  
States**APPROVAL SUBJECT TO  
GENERAL REQUIREMENTS  
AND SPECIAL STIPULATIONS  
ATTACHED****SEE ATTACHED FOR  
CONDITIONS OF APPROVAL**

N / MEXICO OIL CONSERVATION COMMISSION  
WELL LOCATION AND ACREAGE DEDICATION PLAT

*Prop # 36884*

Form C-102  
Supersedes C-128  
Effective 1-1-65

All distances must be from the outer boundaries of the Section

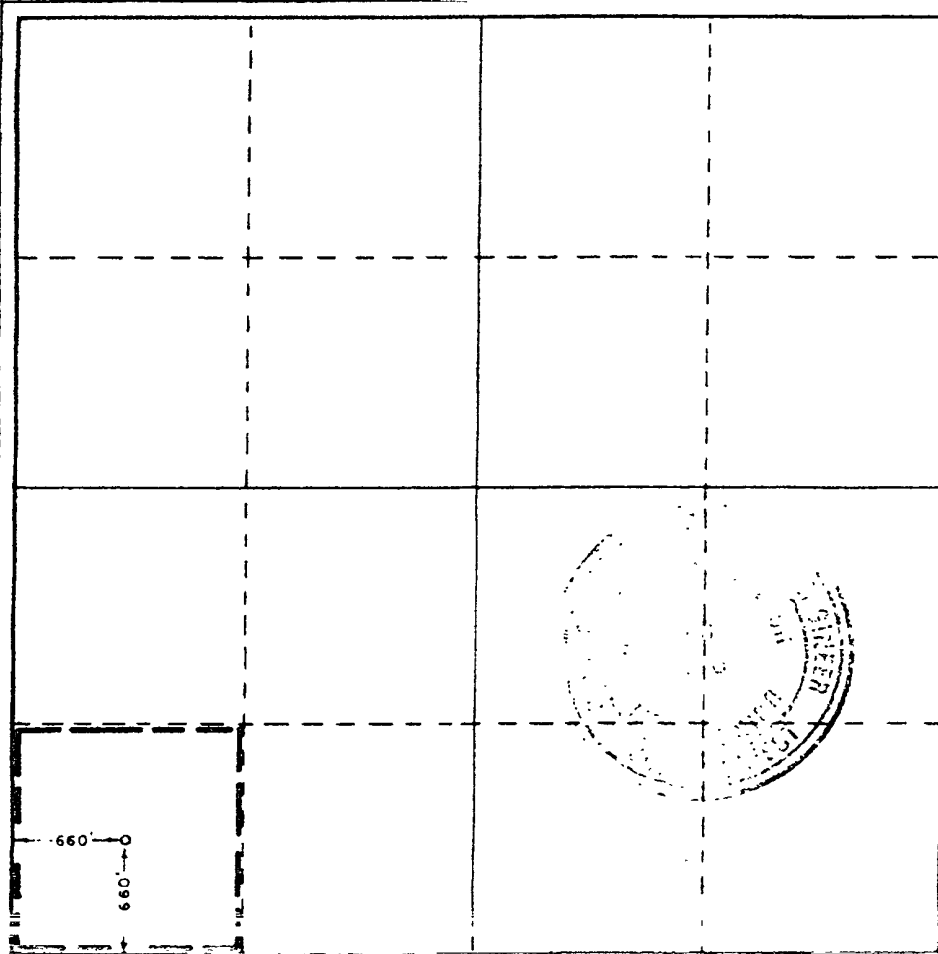
Operator <b>FLAG-REDFERN OIL CO.</b>			Lease <b>SUN "10" FED</b>		Well No. <b>1</b>
Unit Letter <b>M</b>	Section <b>10</b>	Township <b>26S</b>	Range <b>30E</b>	County <b>EDDY</b>	
Actual Footage Location of Well: <b>660</b> feet from the <b>SOUTH</b> line and <b>660</b> feet from the <b>WEST</b> line					
Ground Level Elev. <b>3112.5</b>	Producing Formation <b>BRUSHY CANYON</b>		Pool <b>WILDCAT</b>	Dedicated Acreage: <b>40</b> Acres	

1. Outline the acreage dedicated to the subject well by colored pencil or hachure marks on the plat below.
2. If more than one lease is dedicated to the well, outline each and identify the ownership thereof (both as to working interest and royalty).
3. If more than one lease of different ownership is dedicated to the well, have the interests of all owners been consolidated by communitization, unitization, force-pooling, etc?

☐ Yes ☐ No If answer is "yes," type of consolidation \_\_\_\_\_

If answer is "no," list the owners and tract descriptions which have actually been consolidated. (Use reverse side of this form if necessary.) \_\_\_\_\_

\_\_\_\_\_ as assigned to the well until all interests have been consolidated (by communitization, unitization, forced-pooling, or otherwise) or until a non-standard unit, eliminating such interests, has been approved by the Commission.



**CERTIFICATION**

I hereby certify that the information contained herein is true and complete to the best of my knowledge and belief

Name *Arthur R. Brown*  
**Arthur R. Brown**

Position  
**Agent**

Company  
**FLAG-REDFERN OIL COMPANY**

Date  
**MAY 13, 1985**

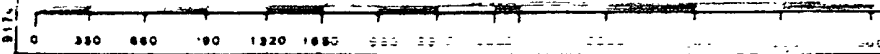
I hereby certify that the well location shown on this plat was plotted from field notes of actual surveys made by me or under my supervision, and that the same is true and correct to the best of my knowledge and belief.

Date Surveyed  
**5/11/85**

Registered Professional Engineer and/or Land Surveyor

*John W. West*

**JOHN W. WEST, 676**  
**RONALD J. EIDSON, 3239**



APPLICATION FOR PERMIT TO RE-ENTER

RKI EXPLORATION & PRODUCTION, LLC.

SUN "10" FEDERAL # 1

UNIT "M"

SECTION 10

T26S-R30E

EDDY CO. NM

1. Excavate around well head, set anchors, Re-install wellhead.
2. Move in well service unit with related equipment with reverse unit and tanks.
2. Install B.O P. Prep to drill out plugs. Drill to the 5½" casing stub at 2540'.  
Install 5½" casing from the top of stub back to surface.
3. Drill out cement to 2750' and pressure test the 5½" casing to 500 PSI.
4. Drill out cement plugs to 6420' (top of cement on top of CIBP at 6430').
5. If necessary squeeze cement perforations at 4394'.
6. Acidize perforations 4458-4480 and 5742-5762' with NEFE acid.
7. Install tubing, rod pump, and rods. Set prime mover and place well on production.

APPLICATION FOR PERMIT TO RE-ENTER

RKI EXPLORATION & PRODUCTION, LLC.

SUN "10" FEDERAL # 1

UNIT "M"

SECTION 10

T26S-R30E

EDDY CO. NM

In response to questions asked under Section II of Bulletin NTL-6, the following information on the above well is provided for your information.

1. LOCATION: 660' FSL & 660' FWL SECTION 10 T26S-R30E EDDY CO. NM

2. ELEVATION ABOVE SEA LEVEL: 3112' GL

3. GEOLOGIC NAME OF SURFACE FORMATION: Quaternary Aeolian Deposits.

4. DRILLING TOOLS AND ASSOCIATED EQUIPMENT: Conventional rotary drilling rig using drilling mud as a circulating medium for solids removal from hole.

5. PROPOSED DRILLING DEPTH: 6420'

6. ESTIMATED TOPS OF GEOLOGICAL MARKERS:

Rustler Anhydrite	750'	Delaware Sand	3500'
Top of Salt	1500'	Cherry Canyon	4400'
Delaware Lime	3575'	Brushy Canyon	5877'

7. POSSIBLE MINERAL BEARING FORMATION:

Delaware	Oil	Brushy Canyon	Oil
----------	-----	---------------	-----

8. CASING PROGRAM:

Hole Size	Interval	OD of Casing	Weight	Thread	Collar	Grade
17½"	0-605'	13 3/8"	48#	8-R	ST&C	H-40
8 5/8"	0-3500'	8 5/8"	24 & 32#	8-R	ST&C	J-55
7 7/8"	0-6719'	5½"	15.5#	8-R	ST&C	J-55

Above casing recorded above were set when the well was drilled in 1985.

APPLICATION FOR PERMIT TO RE-ENTER

RKI EXPLORATION & PRODUCTION, LLC.

SUN "10" FEDERAL # 1

UNIT "M"

SECTION 10

T26S-R30E

EDDY CO. NM


9. CEMENTING & SETTING DEPTHS OF CASING:

13 3/8"	Surface	605' of 13 3/8" casing was set and cemented with 325 Sx. of Halco-light + 6 lb salt/Sx. + .25# of slocels/ Sx. tail in with 200 Sx. of Class "C" + 2% CaCl, 125 Sx circulated to surface.
8 5/8"	Intermediate	3500' of 8 5/8" 32 & 24 # J-55 ST&C casing was run and cemented with 1000' of Halco-light cement + 6 lb salt/Sx. + 1/2# Flocele, tail in with 200 Sx. of Class "C" cement + 2% CaCl. circulated 100 Sx. to surface.
5 1/2"	Production	6719' of 5 1/2" 15.5# J-55 ST&C casing was run and cemented in 2 stages with DV tool at 4817'. 1st stage 500 Sx. of 50/50 POZ + 6lb salt/Sx. 4# Gilsonite/Sx. + 1/2# Flocele/ Sx. 2nd stage cement with 450 Sx. of 50/50 POZ + 6# salt/Sx. + 4# Gilsonite/Sx. (TOC 4400) Perf at 4394' Cement with 350 Sx. 50/50 POZ + 6# salt + 4# Gilsonite/ Sx. TOC 2560'.

10 PRESSURE CONTROL EQUIPMENT:

A manually operated 3000 PSI B.O.P. with a set of blind rams and a set of pipe rams will be on the well at all times while drilling plugs, testing casing and during the completion of the well.

see  
COA



11. PROPOSED CIRCULATING SYSTEM:

10 PPg - per operator 10-21-07

Brine water will be used to drill out plugs and clean hole. No reserve pits will be required as a reverse circulating rig will be used and steel tanks will be used to contain the brine water.

APPLICATION FOR PERMIT TO RE-ENTER

RKI EXPLORATION & PRODUCTION, LLC.

SUN "10" FEDERAL # 1

UNIT "M" SECTION 10

T26S-R30E EDDY CO. NM

12. LOGGING, COREING & TESTING:

A. No logging or open hole testing will be required.

13. POTENTIAL HAZARDS:

No abnormal pressures or temperatures are expected. There is no known presence of H<sub>2</sub>S in this area. If H<sub>2</sub>S is encountered the operator will comply with the provisions of Onshore Oil and Gas Order No. 6. No lost circulation is expected to occur. All personnel will be familiar with all aspects of safe operation of equipment being used to drill this well. Estimated BHP 2000± PSI, and Estimated BHT 145°.

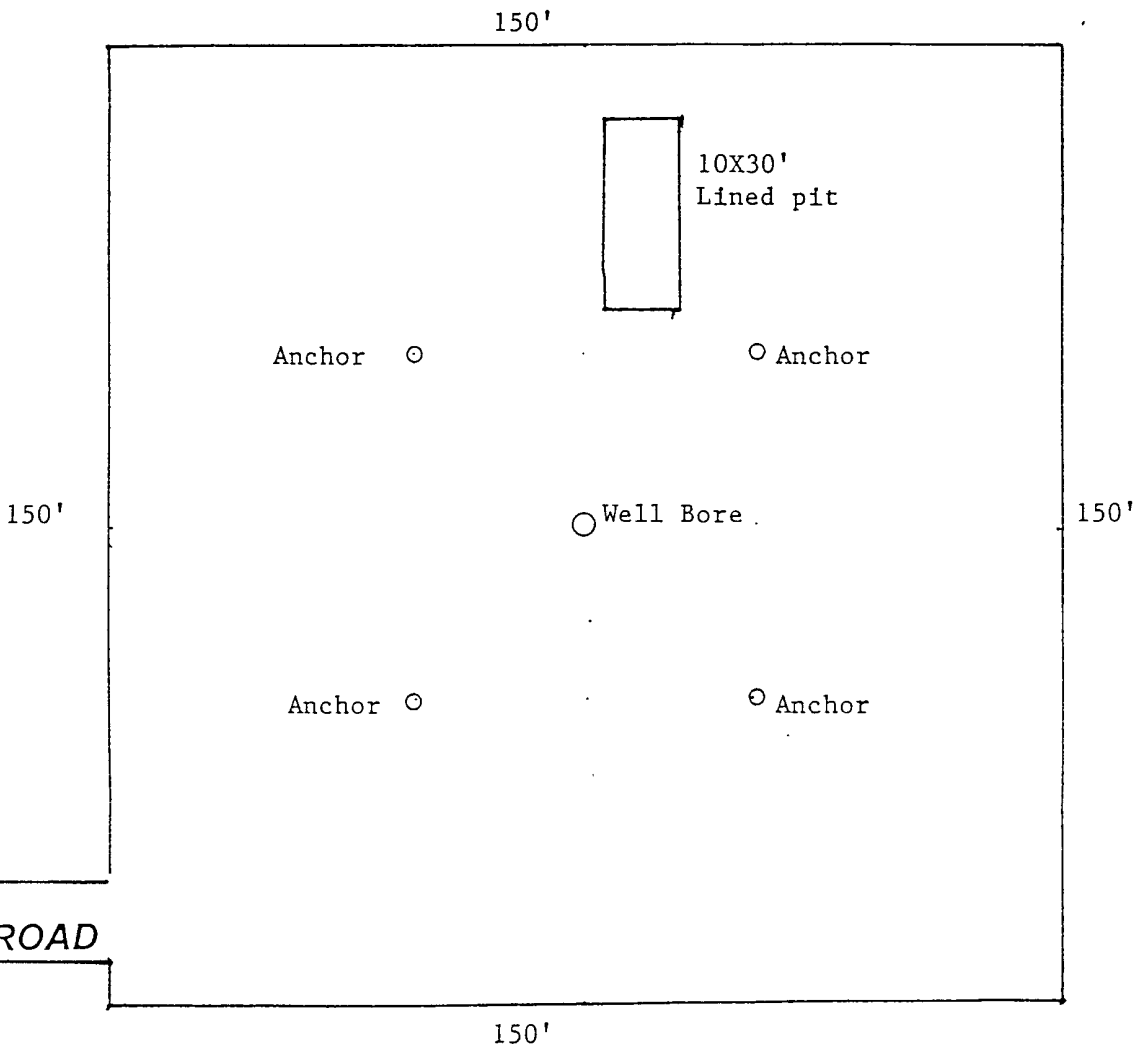
There is no known presence of H<sub>2</sub>S in this area according to The BLM.

14. ANTICIPATED STARTING DATE AND DURATION OF OPERATION:

Road and location construction will begin after the BLM has approved the APD. Anticipated spud date will be as soon after BLM approval and as soon as a rig will be available. Move in operation and drilling is expected to take 6 days. If production casing is run then an additional 10 days will be needed to complete well and construct surface facilities and/or lay flowlines in order to place well on production.

15. OTHER FACETS OF OPERATIONS:

After running casing, cased hole Gamma Ray, Neutron Collar logs will be run from TD back to all possible productive zones. The BRUSHY CANYON formation will be perforated and stimulated in order to establish production. The well will be swab tested and potentialized as an oil well.



*See COA's*

EXHIBIT "D"  
WELL SERVICE UNIT PLAT

RKI EXPLORATION & PRODUCTION, LLC.  
SUN "10" FEDERAL # 1  
UNIT "M" SECTION 10

## WELL BORE SKETCH

OPERATOR/LEASE/WELL RKI EXPLORATION & PRODUCTION LLC. SUN "10" FEDERAL # 1

NRE JOB NUMBER \_\_\_\_\_ DATE \_\_\_\_\_

FIELD/POOL \_\_\_\_\_ / \_\_\_\_\_

PLUG BACK DEPTH \_\_\_\_\_ KB \_\_\_\_\_ ELEVATION \_\_\_\_\_



15 Sx @ surface  
50'-surface

Hole Size 17 1/2"**SURFACE CASING:**

Size 13 3/8" Weight 48# Grade H-40  
 Set at 605' with 525 Sacks Cement  
 Circulate 125 Sacks to Surface  
 Remarks: \_\_\_\_\_

30 Sx 655-545'

Hole Size 11"**INTERMEDIATE CASING:**

Size 8 5/8" Weight 24# Grade J-55  
 Set at 3500' with 1200 Sacks Cement  
 Circulate 100 Sacks to Surface  
 Cement Top: Calculated \_\_\_\_\_ Temperature Survey \_\_\_\_\_  
 Remarks: \_\_\_\_\_

shot csg. @ 2540'  
 20 Sx. 2590-2490'

Hole Size 7 7/8"**PRODUCTION CASING:**

Size 5 1/2" Weight 15.5 Grade J-55  
 Set at 6719' with 1300 Sacks Cement  
 Cement Top: Calculated 2560' Temperature Survey \_\_\_\_\_  
 Remarks: Two stage DV Tool at 4817'  
1st stage 500 Sx. 2nd stage 450 Sx. Top of cement  
by temp survey 4400'. Perf W/ 4 holescement with  
350 Sx. TOC 2560'.

50 Sx. 3710-3210

**TUBING:**

Size \_\_\_\_\_ Weight \_\_\_\_\_ Grade \_\_\_\_\_  
 Number of Joints \_\_\_\_\_ Set at \_\_\_\_\_  
 Packer Set at \_\_\_\_\_  
 Bottom Arrangement: \_\_\_\_\_

Perfs 3648-6480 OA

**RODS:**

Size \_\_\_\_\_ Number \_\_\_\_\_  
 Gas Anchor Set at \_\_\_\_\_  
 Pump Set at \_\_\_\_\_  
 Arrangement: \_\_\_\_\_

CIBP @ 5265

CIBP @ 6430'



# WELL BORE SKETCH

OPERATOR/LEASE/WELL \_\_\_\_\_  
NRE JOB NUMBER \_\_\_\_\_ DATE \_\_\_\_\_  
FIELD/POOL \_\_\_\_\_ / \_\_\_\_\_  
PLUG BACK DEPTH \_\_\_\_\_ KB \_\_\_\_\_ ELEVATION \_\_\_\_\_

Hole Size 17 1/2"

**SURFACE CASING:**  
Size 13 3/8" Weight 48# Grade H-40  
Set at 605' with 525 Sacks Cement  
Circulate 125 Sacks to Surface  
Remarks: \_\_\_\_\_

Hole Size 11"

**INTERMEDIATE CASING:**  
Size 8 5/8" Weight 24 & 32# Grade J-55  
Set at 3500' with 1200 Sacks Cement  
Circulate 100 Sacks to Surface  
Cement Top: Calculated \_\_\_\_\_ Temperature Survey \_\_\_\_\_  
Remarks: \_\_\_\_\_

Hole Size 7 7/8"

**PRODUCTION CASING:**  
Size 5 1/2" Weight 15.5 Grade J-55  
Set at 6719' with 1300 Sacks Cement  
Cement Top: Calculated 2540' Temperature Survey \_\_\_\_\_  
Remarks: 2 stage cement with DV Tool at 4817'.  
Ran temp survey after 2nd stage TOC @ 4400' Perf 4  
holes at 4394' cement with 350 Sx. of cement. Estimate  
TOC @ 2540'.

- 7-25-85 Set CIBP at 3620'. Spotted 40 sx class "C" cement from 3620' to 3220'.
- 7-26-85 Tagged TOC at 3193'. Loaded hole with mud laden fluid. Shot 5 1/2" casing off at 2540'. Layed down 60 jts casing. Spotted 20 sx class "C" from 2590' to 2447'. Spotted 30 sx class "C" cement from 1950' to 1840'. Spotted 30 sx class "C" cement from 655' to 545'. Spotted 15 sx class "C" from 50' to surface.
- 7-27-85 Cut casing off and installed dry hole marker.

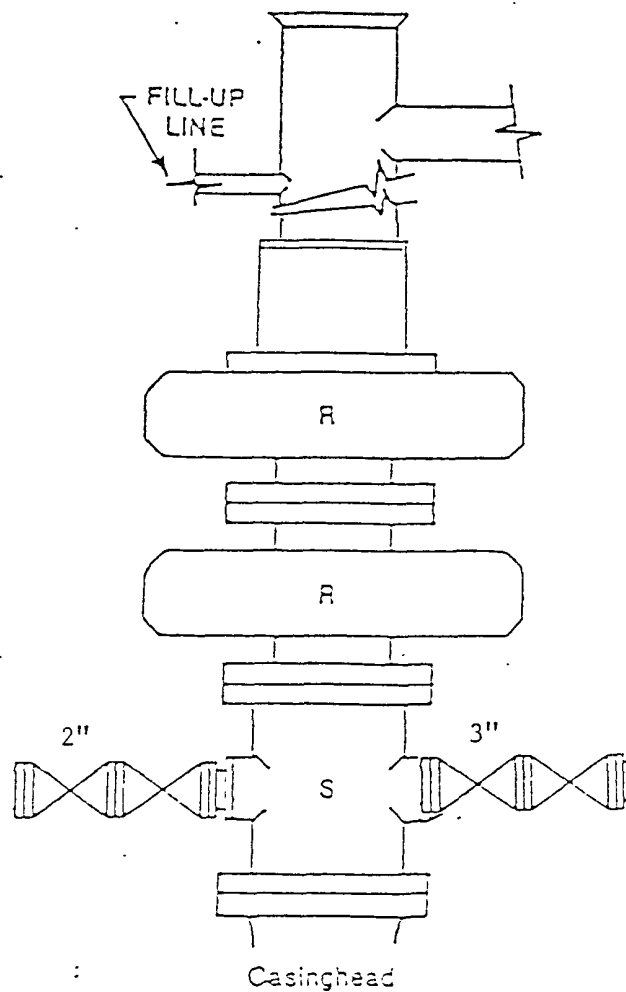


FIGURE K1-1. Recommended IADC Class 2 BOP stack, 3000 psi WP.  
 Either SRd (left) or SA (right) arrangement is acceptable and drilling  
 spool is optional.

EXHIBIT "E-1"  
 SKETCH OF B.O.P. TO BE USED ON  
 RKI EXPLORATION & PRODUCTION, LLC.  
 SUN "10 FEDERAL # 1  
 UNIT "M" SECTION 10  
 T26S-R30E EDDY CO. NM

SURFACE USE PLAN

RKI EXPLORATION & PRODUCTION, LLC.

SUN "10" FEDERAL # 1

UNIT "M"

SECTION 10

T26S-R30E

EDDY CO. NM

1. EXISTING AND PROPOSED ROADS:

- A. Exhibit "B" is a reproduction of a County General Hi-way map showing existing roads. Exhibit "C" is a reproduction of a USGS topographic map showing existing roads and proposed roads. All existing roads will be maintained in a condition equal to or better than current conditions. All new roads will be constructed to BLM specifications.
- B. Exhibit "A" shows the proposed well site as staked.
- C. Directions to location: From Loving New Mexico take U. S. Hi-way 285 South for 17.1± miles to CR-725, turn Left (East) go 4.2 miles take pipeline road East for 6.5 miles, turn Right (South) go 1 mile, then turn Left (East) follow lease road 1.1 mile and the P & A well is on the North side of road.
- D. Exhibit "C" is a topographic map showing location and roads in the area.

2. PLANNED ACCESS ROADS: No new roads will be required for this well.

- A. The access roads will be crowned and ditched to a 14' wide travel surface, within a 30' R-O-W.
- B. Gradient of all roads will be less than 5%.
- C. Turn-outs will be constructed where necessary.
- D. If require new access roads will be surface with a minimum of 4-6" of caliche. this material will be obtained from a local source.
- E. Center line for new roads will be flagged, road construction will be done as field conditions require.
- F. Culverts will be placed in the access road as drainage conditions require. Roads will be constructed to use low water crossings for drainage as required by the topographic conditions.

3. LOCATION OF EXISTING WELLS WITHIN A ONE MILE RADIUS: EXHIBIT "A-1"

- A. Water wells - None within 2 miles of location
- B. Disposal wells - None Known
- C. Drilling wells - None Known
- D. Producing wells - as shown on Exhibit "A-1"
- E. Abandoned wells - As shown on Exhibit "A-1"

## SURFACE USE PLAN

RKI EXPLORATION & PRODUCTION, LLC.

SUN "10" FEDERAL # 1

UNIT "M"

SECTION 10

T26S-R30E

EDDY CO. NM

4. If on completion this well is a producer the operator will lay pipelines and construct powerlines along existing road R-O-W's or other existing R-O-W's. Exhibit "C" shows proposed roads , flowlines and powerlines.

5. LOCATION & TYPE OF WATER SUPPLY:

Water will be purchased locally from a commercial source and trucked over the location access roads or piped to location in flexible lines laid on top of the ground.

6. SOURCE OF CONSTRUCTION MATERIAL:

If possible construction material will be obtained from the excavation of the drill site, if additional material is required it will be obtained from a local source and transported over the location access roads as shown on Exhibit "C".

7. METHODS OF HANDLING WASTE:

- A. All trash, junk and other waste material will be contained in trash cages or trash bins in order to prevent scattering. When the job is completed all contents will be removed and disposed of in an approved sanitary land fill.
- B. Sewage from living quarters will be drained into holding tanks and will be cleaned out periodically. A Porta-John will be provided for the rig crews. This equipment will be properly maintained during the drilling operations and removed upon completion of well.
- C. Remaining drilling fluids will be allowed to evaporate in the reserve pits until the pits are dry enough to be broken out for further drying. If the drilling fluids do not evaporate in a reasonable time they will be hauled off by transports to a State approved disposal site. Later the pits will be broken out to speed drying. Water produced during completion will be stored in tanks and disposed of in State approved disposal site. Oil and condensate produced during completion will be put in storage tanks and sold.
- D. Drill cuttings will be disposed of in reserve pits or if necessary will be taken to a State approved landfarm and disposed of properly.
- E. Any remaining salts or mud additives will be collected by the supplier and to stock, this includes all broken bags.

8. ANCILLARY FACILITIES:

- A. No camps or air strips will be constructed on location.

## SURFACE USE PLAN

RKI EXPLORATION & PRODUCTION, LLC.  
SUN "10" FEDERAL # 1  
UNIT "M" SECTION 10  
T26S-R30E EDDY CO. NM

### 9. WELL SITE LAYOUT:

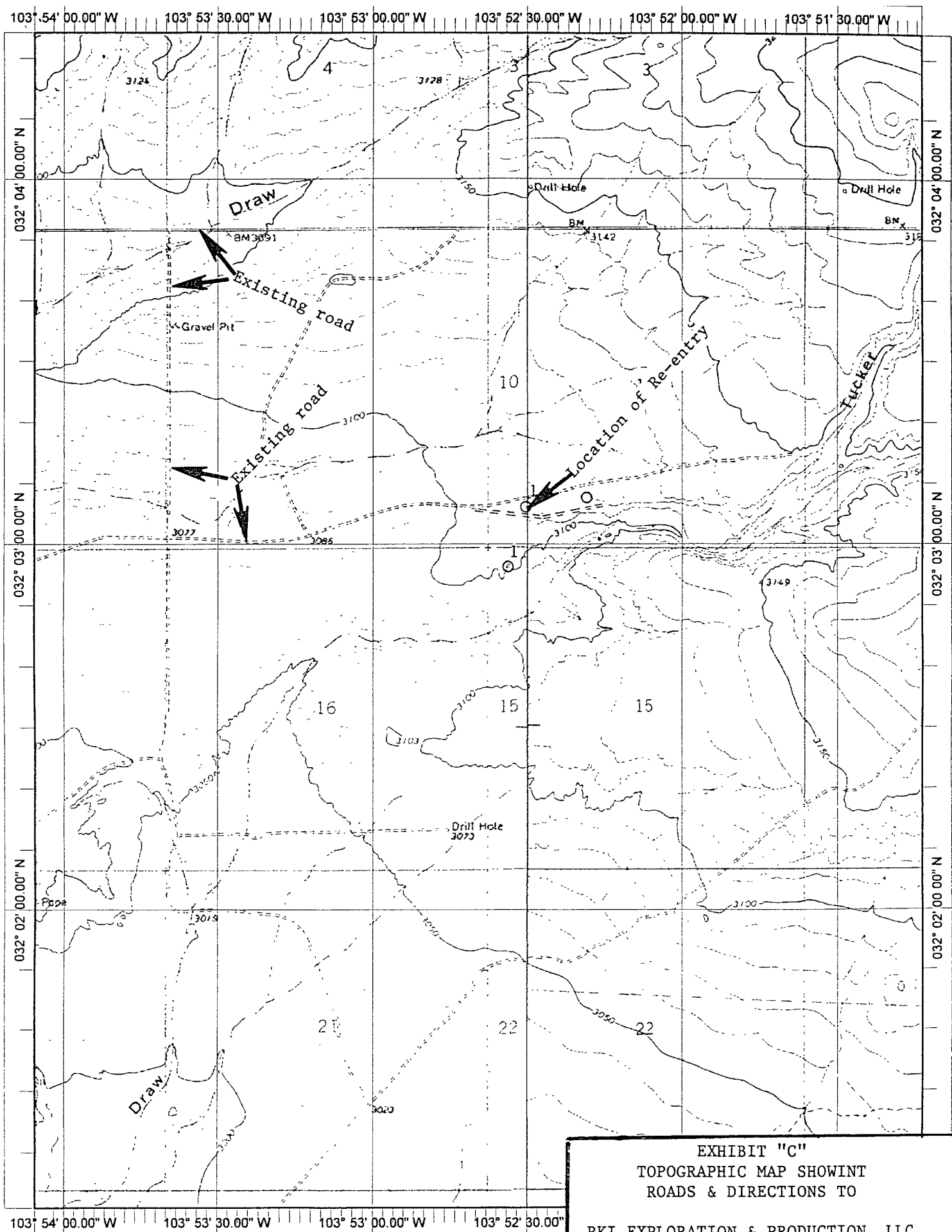
- A. Exhibit "D" shows the proposed well site layout.
- B. This Exhibit shows the location of reserve pit, sump pits, and living facilities.
- C. Mud pits in the active circulating system will be steel pits and the reserve pits will be unlined unless subsurface conditions encountered during pit construction indicate that a plastic liner is required to contain lateral migration.
- D. If needed the reserve pits will be lined with polyethelene. The pit liner will be no less than 12 mils thick and the liner will be extended at least 3 feet over the top of the dikes and secured in place to keep edge of liner in place.
- E. The reserve pit will be fenced on three sides and fenced with four strands of barbed wire during drilling and completion phases. The 4th side will be fenced after drilling operations are complete and the drilling rig has moved out. If the well is a producer the mud pits will remain fenced in until the mud has dried up enough to break out the pits and reclaimed according to BLM requirements.

### 10. PLANS FOR RESTORATION OF SURFACE:

Rehabilitation of the location and reserve pits will be allowed to dry properly, fluids may be moved and disposed of in accordance with article 7-E as previously noted. The pit area will then be leveled and contoured to conform to the original and surrounding area. Drainage systems, if any will be reshaped to the original configuration with provisions made to alleviate future erosion. In case of the well completed as a producer the drilling pad will be necessary to construct production facilities. After the area has been shaped and contoured top soil from the spoil pile will be placed over the disturbed area to the extent possible so that revegetation procedures can be accomplished to comply with the BLM specifications.

If the well is a dry hole the pad and road area will be contoured to match the existing terrain. Top soil will be spread to the extent possible and revegetation will be carried out according to the BLM specifications.

Should the well be a producer the previously noted procedures will apply to those areas which are not required for production facilities.



Copyright (C) 1999, Maptech, Inc.

EXHIBIT "C"  
TOPOGRAPHIC MAP SHOWING  
ROADS & DIRECTIONS TO  
RKI EXPLORATION & PRODUCTION, LLC.  
SUN "10" FEDERAL # 1  
UNIT "M" SECTION 10  
T26S-R30E EDDY CO. NM

## CERTIFICATION

I HEREBY CERTIFY THAT I OR PERSONS UNDER MY SUPERVISION HAVE INSPECTED THE PROPOSED DRILL SITE AND THE ACCESS ROAD ROUTES, THAT I AM FAMILIAR WITH THE CONDITIONS THAT CURRENTLY EXIST, AND THAT THE STATEMENTS MADE IN THIS PLAN ARE TO THE BEST OF MY KNOWLEDGE ARE TRUE AND CORRECT, AND THAT THE WORK ASSOCIATED WITH THE OPERATIONS PROPOSED HEREIN WILL BE PERFORMED BY RKI EXPLORATION & PRODUCTION, LLC. ITS CONTRACTORS OR ITS SUB-CONTRACTORS IS IN CONFORMANCE WITH THIS PLAN AND THE TERMS AND THE CONDITIONS UNDER WHICH IT IS APPROVED. THIS STATEMENT IS SUBJECT TO THE PROVISIONS OF U.S.C. 1001 FOR THE FILING OF A FALSE STATEMENT.

### OPERATORS REPRESENTATIVES

#### BEFORE CONSTRUCTION

JOE T. JANICA

TIERRA EXPLORATION, INC.  
P. O. BOX 2188  
HOBBS, NEW MEXICO 88241  
PHONE OFFICE 505-391-8503

CELL 505-390-1598

NAME: JOE T. JANICA


DATE: 10/15/07

TITLE: AGENT

#### DURING AND AFTER CONSTRUCTION

GENE SIMER

RKI EXPLORATION & PRODUCTION, LLC..  
309 SOUTH HALAGUENO STREET  
P. O. BOX 370  
CARLSBAD, NEW MEXICO 88221-0370  
PHONE OFFICE 505-885-3509  
CELL 505-706-3225



## VI. DRILLING

### A. DRILLING OPERATIONS REQUIREMENTS

The BLM is to be notified a minimum of 2 hours in advance for a representative to witness:

- a. Spudding well
- b. Setting and/or Cementing of all casing strings
- c. BOPE tests

☒ **Eddy County**

Call the Carlsbad Field Office, 620 East Greene St., Carlsbad, NM 88220,  
(575) 361-2822

1. **Although Hydrogen Sulfide has not been reported in this section, it is always a potential hazard. If Hydrogen Sulfide is encountered, please report measured amounts to the BLM.**
2. Unless the production casing has been run and cemented or the well has been properly plugged, the drilling rig shall not be removed from over the hole without prior approval.

### B. CASING – RE-ENTRY

1. The 13-3/8 inch surface casing **exists and is set at 605 feet and cemented to surface.**
2. The 8-5/8 inch intermediate casing **exists and is set at 3500 feet and cemented to surface.**
3. **After tie-back of 5-1/2 inch casing and drilling to 2750', perform CIT on 5-1/2" casing string. Since well was plugged in 1985, a CIT of the entire 5-1/2" casing string is required.**
4. If hardband drill pipe is rotated inside casing, returns will be monitored for metal. If metal is found in samples, drill pipe will be pulled and rubber protectors which have a larger diameter than the tool joints of the drill pipe will be installed prior to continuing drilling operations.



### **C. PRESSURE CONTROL**

1. All blowout preventer (BOP) and related equipment (BOPE) shall comply with well control requirements as described in Onshore Oil and Gas Order No. 2 and API RP 53 Sec. 17. **A choke manifold is not required for this operation. The proposed BOP is a 2M per Onshore Order II and that is the minimum requirement.**
2. The appropriate BLM office shall be notified a minimum of 2 hours in advance for a representative to witness the tests.
  - a. The tests shall be done by an independent service company.
  - b. The results of the test shall be reported to the appropriate BLM office.
  - c. All tests are required to be recorded on a calibrated test chart. A copy of the BOP/BOPE test chart and a copy of independent service company test will be submitted to the appropriate BLM office.
  - d. The BOP/BOPE test shall include a low pressure test from 250 to 300 psi. The test will be held for a minimum of 10 minutes if test is done with a test plug and 30 minutes without a test plug.

**Engineer on call phone (after hours):      Carlsbad: (575) 706-2779**

**WWI 120307**