

District I
1625 N French Dr., Hobbs, NM 88240
District II
1301 W Grand Avenue, Artesia, NM 88210
District III
1000 Rio Brazos Rd., Aztec, NM 87410
District IV
1220 S St Francis Dr., Santa Fe, NM 87505

State of New Mexico
Energy, Minerals & Natural Resources

Form C-104
Revised Feb. 26, 2007

Oil Conservation Division
1220 South St. Francis Dr.
Santa Fe, NM 87505

NOV 08 2007

Submit to Appropriate District Office
5 Copies

OCD-ARTESIA

☐ AMENDED REPORT

I. REQUEST FOR ALLOWABLE AND AUTHORIZATION TO TRANSPORT

| | | |
|---|--|---|
| ¹ Operator name and Address Marbob Energy Corporation PO Box 227 Artesia, NM 88211-0227 | | ² OGRID Number 14049 |
| | | ³ Reason for Filing Code/ Effective Date R/C Effective 8/9/07 |
| ⁴ API Number 30 - 015-33931 | ⁵ Pool Name Cemetery; Wolfcamp (Gas) | ⁶ Pool Code 74680 |
| ⁷ Property Code 35012 | ⁸ Property Name Double Trouble Federal | ⁹ Well Number 1 |

II. ¹⁰ Surface Location

| | | | | | | | | | |
|--------------------|--------------|-----------------|--------------|---------|----------------------|---------------------------|----------------------|------------------------|----------------|
| UL or lot no. 1 | Section 3 | Township 21S | Range 25E | Lot Idn | Feet from the 940 | North/South Line North | Feet from the 791 | East/West line East | County Eddy |
|--------------------|--------------|-----------------|--------------|---------|----------------------|---------------------------|----------------------|------------------------|----------------|

¹¹ Bottom Hole Location

| | | | | | | | | | |
|--------------------|--------------|-----------------|--------------|---------|----------------------|---------------------------|-----------------------|------------------------|----------------|
| UL or lot no. 3 | Section 3 | Township 21S | Range 25E | Lot Idn | Feet from the 771 | North/South line North | Feet from the 1878 | East/West line West | County Eddy |
|--------------------|--------------|-----------------|--------------|---------|----------------------|---------------------------|-----------------------|------------------------|----------------|

| | | | | | |
|-----------------------------|---|---|-----------------------------------|------------------------------------|-------------------------------------|
| ¹² Lse Code F | ¹³ Producing Method Code F | ¹⁴ Gas Connection Date 8/10/07 | ¹⁵ C-129 Permit Number | ¹⁶ C-129 Effective Date | ¹⁷ C-129 Expiration Date |
|-----------------------------|---|---|-----------------------------------|------------------------------------|-------------------------------------|

III. Oil and Gas Transporters

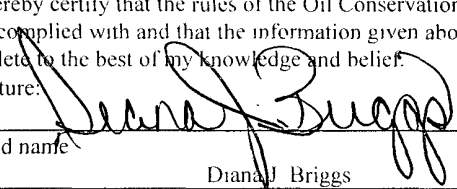
| | | |
|------------------------------------|---|---------------------|
| ¹⁸ Transporter OGRID | ¹⁹ Transporter Name and Address | ²⁰ O/G/W |
| 15694 | Navajo Refining Company PO Box 159 Artesia, NM 88211-0159 | O - 4005399 |
| 36785 | DCP Midstream, LP PO Box 50020 Midland, TX 79710-0020 | G - 4005398 |
| | | W - 4005400 |

IV. Well Completion Data

| | | | | | |
|------------------------------------|------------------------------------|----------------------------|-----------------------------|---|-----------------------|
| ²¹ Spud Date 3/26/05 | ²² Ready Date 8/9/07 | ²³ TD 11320' | ²⁴ PBDT 8725' | ²⁵ Perforations 8570' - 8578' | ²⁶ DHC, MC |
| ²⁷ Hole Size | ²⁸ Casing & Tubing Size | ²⁹ Depth Set | ³⁰ Sacks Cement | | |
| 12 ¼" | 9 5/8" | 1693' | 650 sx | | |
| 8 ¾" | 7" | 9608' | 1550 sx | | |
| 6 1/8" | 4 ½" | 11321' | 175 sx | | |
| | 2 7/8" | 8521' | | | |

V. Well Test Data

| | | | | | |
|---------------------------------------|--|------------------------------------|-------------------------------------|-----------------------------|--------------------------------|
| ³¹ Date New Oil 8/10/07 | ³² Gas Delivery Date 8/10/07 | ³³ Test Date 8/11/07 | ³⁴ Test Length 24 hrs | ³⁵ Tbg. Pressure | ³⁶ Csg. Pressure |
| ³⁷ Choke Size | ³⁸ Oil 0 | ³⁹ Water 40 | ⁴⁰ Gas 1 | | ⁴¹ Test Method F |

| | | | |
|--|-------------------------|---|--|
| ⁴² I hereby certify that the rules of the Oil Conservation Division have been complied with and that the information given above is true and complete to the best of my knowledge and belief. Signature:  | | OIL CONSERVATION DIVISION | |
| Printed name Diana J. Briggs | | Approved by BRYAN G. ARRANT DISTRICT II GEOLOGIST | |
| Title Production Analyst | | Approval Date DEC 12 2007 | |
| E-mail Address production@marbob.com | | | |
| Date 11/7/07 | Phone (575) 748-3303 | | |

DISTRICT II
1301 V. GRAND AVENUE, ARTESIA, NM 88210

DISTRICT III
1000 Rio Brazos Rd., Aztec, NM 87410

DISTRICT IV
1220 S. ST. FRANCIS DR., SANTA FE, NM 87505

OIL CONSERVATION DIVISION
1220 SOUTH ST. FRANCIS DR.
Santa Fe, New Mexico 87505

Form C-102
Revised JUNE 10, 2003
Submit to Appropriate District Office
State Lease - 4 Copies
Fee Lease - 3 Copies

WELL LOCATION AND ACREAGE DEDICATION PLAT

☐ AMENDED REPORT

| | | |
|---------------|---------------------------|--------------------------|
| API Number | Pool Code | Pool Name |
| 30-015-33931 | 74680 | CEMETERY; WOLECAMP (GAS) |
| Property Code | Property Name | Well Number |
| 35012 | DOUBLE TROUBLE FEDERAL | 1 |
| OGRID No. | Operator Name | Elevation |
| 14049 | MARBOB ENERGY CORPORATION | 3298' |

Surface Location

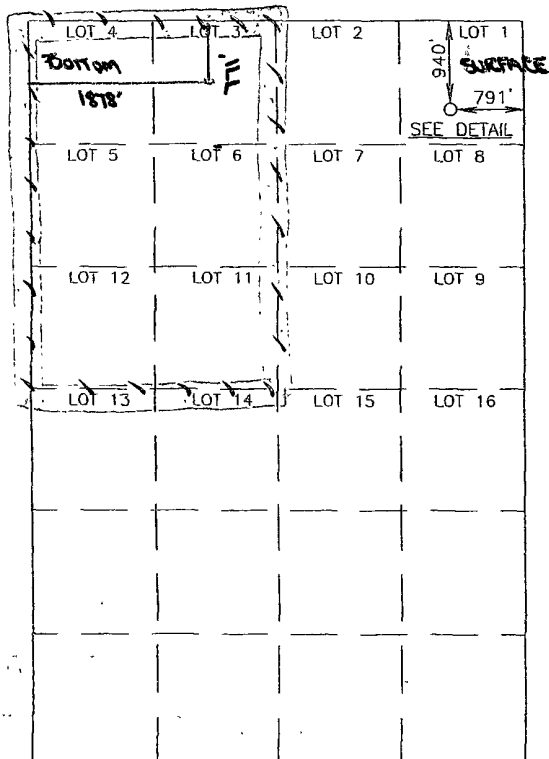
| Ul. or lot No. | Section | Township | Range | Lot Idn | Feet from the | North/South line | Feet from the | East/West line | County |
|----------------|---------|----------|-------|---------|---------------|------------------|---------------|----------------|--------|
| 1 | 3 | 21-S | 25-E | | 940 | NORTH | 791 | EAST | EDDY |

Bottom Hole Location If Different From Surface

| UL or lot No. | Section | Township | Range | Lot Idn | Feet from the | North/South line | Feet from the | East/West line | County |
|---------------|---------|----------|-------|---------|---------------|------------------|---------------|----------------|--------|
| 3 | 3 | 21S | 25E | | 771 | NORTH | 1878 | WEST | EDDY |

| Dedicated Acres | Joint or Infill | Consolidation Code | Order No. |
|-----------------|-----------------|--------------------|-----------|
| 298 | | | |

NO ALLOWABLE WILL BE ASSIGNED TO THIS COMPLETION UNTIL ALL INTERESTS HAVE BEEN CONSOLIDATED
OR A NON-STANDARD UNIT HAS BEEN APPROVED BY THE DIVISION



SCALE - 1"=2000'

OPERATOR CERTIFICATION

I hereby certify the the information
contained herein is true and complete to the
best of my knowledge and belief.

Signature _____

DIANA J. BRIGGS

Printed Name _____

PRODUCTION ANALYST

Title

NOVEMBER 7, 2007

Date _____

SURVEYOR CERTIFICATION

I hereby certify that the well location shown on this plat was plotted from field notes of actual surveys made by me or under my supervision, and that the same is true and correct to the best of my belief.

OCTOBER 5, 2004

Date Surveyed 11/1/80

LA

Signature & Seal of
Professional Surveyor

Barry A. E. Brown 10/6/04
04 11 1291

Certificate No. GARY EDSON

12641