

District I

1625 N. French Dr., Hobbs, NM 88240

District II

1301 W. Grand Avenue, Artesia, NM 88210

District III

1000 Rio Brazos Road, Aztec, NM 87410

District IV

1220 S. St. Francis Dr., Santa Fe, NM 87505

State of New Mexico
Energy Minerals and Natural Resources

Form C-101

May 27, 2004

Oil Conservation Division
1220 South St. Francis Dr.
Santa Fe, NM 87505

Submit to appropriate District Office

DEC 18 2007

☐ AMENDED REPORT

OCD-ARTESIA

APPLICATION FOR PERMIT TO DRILL, RE-ENTER, DEEPEN, PLUGBACK, OR ADD A ZONE

¹ Operator Name and Address RKI Exploration and Production, LLC. 3817 NW Expressway, Suite 950 Oklahoma City, OK. 73112		² OGRID Number 246289	
³ Property Code		⁴ API Number 30-015-36004	
⁵ Property Name RDX 16		⁶ Well No. 1	
⁹ Proposed Pool 1 BRUSHY DRAW - DELAWARE EAST (8090)		¹⁰ Proposed Pool 2	

32.03799 103.88523

⁷ Surface Location

UL or lot no. 0	Section 16	Township 26S	Range 30E	Lot Idn	Feet from the 990	North/South line South	Feet from the 2310	East/West line East	County Eddy
--------------------	---------------	-----------------	--------------	---------	----------------------	---------------------------	-----------------------	------------------------	----------------

⁸ Proposed Bottom Hole Location If Different From Surface

UL or lot no.	Section	Township	Range	Lot Idn	Feet from the	North/South line	Feet from the	East/West line	County
---------------	---------	----------	-------	---------	---------------	------------------	---------------	----------------	--------

Additional Well Information

¹¹ Work Type Code N	¹² Well Type Code O	¹³ Cable/Rotary R	¹⁴ Lease Type Code S	¹⁵ Ground Level Elevation 3,056'
¹⁶ Multiple No	¹⁷ Proposed Depth 7,380'	¹⁸ Formation Bone Spring	¹⁹ Contractor Teaco Drilling	²⁰ Spud Date As soon as possible
Depth to Groundwater 150+		Distance from nearest fresh water well App 2 miles		Distance from nearest surface water None known
Pit: Liner: Synthetic <input type="checkbox"/> _____ mils thick Clay <input type="checkbox"/> Pit Volume: _____ bbls Drilling Method: Closed-Loop System <input checked="" type="checkbox"/> Fresh Water <input checked="" type="checkbox"/> Brine <input checked="" type="checkbox"/> Diesel/Oil-based <input type="checkbox"/> Gas/Air <input type="checkbox"/>				

²¹ Proposed Casing and Cement Program

Hole Size	Casing Size	Casing weight/foot	Setting Depth	Sacks of Cement	Estimated TOC
17-1/2"	13-3/8"	54.5	450' 865	380	Surface
11-5/8"	9-5/8"	36	3,500'	845	Surface
7-7/8"	5-1/2"	17	7,380'	540	3,200

²² Describe the proposed program. If this application is to DEEPEN or PLUG BACK, give the data on the present productive zone and proposed new productive zone. Describe the blowout prevention program, if any. Use additional sheets if necessary.

- ② 860 - 870'
- Pre-set 20" conductor at 40'. Cement to surface with Redi-mix cement.
 - Drill 17-1/2" hole to 450'. Set 450' of 13-3/8" surface casing. Cement to surface with 250 sacks lead slurry (yield = 1.95) and 130 sacks tail slurry (yield = 1.34). Volume includes 100% excess to bring cement to surface.
 - Drill 11-5/8" hole to 3,500'. Set 3,500' of 9-5/8", 36# surface casing. Cement with 745 sacks lead slurry (yield = 1.97) and 100 sacks slurry (yield = 1.33). Volume includes 100% excess to bring cement to surface.
 - Drill 7-7/8" hole to 7,380'. Set 7,380' of 5-1/2" production casing. Cement to surface in two stages (DV tool @ ~5,100'). Stage 1, cement with 100 sacks lead slurry (yield = 2.04) and 210 sacks tail slurry (yield = 1.40). Stage 2, cement with 180 sacks lead slurry (yield = 2.04) and 50 sacks tail slurry (yield = 1.32). Volume includes 25% excess. Note: Depth of DV tool and cement volumes to be determined by openhole log information.

See attachments for schematic of BOP equipment.

Operator to set surface casing in Anhydrite section of Rustler

²³ I hereby certify that the information given above is true and complete to the best of my knowledge and belief. I further certify that the drilling pit will be constructed according to NMOCD guidelines ☒ a general permit ☐, or an (attached) alternative OCD-approved plan ☐.

Signature:

Printed name: Joe T. Janica

Title: Permit Engineer

E-mail Address: joejanica@valornet.com

Date: 12/15/07

Phone: 505-391-8503

OIL CONSERVATION DIVISION

Approved by:

BRYAN G. ARRANT

DISTRICT II GEOLOGIST

Title:

Approval Date: DEC 19 2007

Expiration Date:

DEC 19 2008

Conditions of Approval Attached ☐

706 3225

DISTRICT I
1625 N. French Dr., Hobbs, NM 88240

DISTRICT II
1301 W. Grand Avenue, Artesia, NM 88210

DISTRICT III
1000 Rio Brazos Rd., Aztec, NM 87410

DISTRICT IV
1220 S. St. Francis Dr., Santa Fe, NM 87505

State of New Mexico
Energy, Minerals and Natural Resources Department

Form C-102
Revised October 12, 2005

Submit to Appropriate District Office
State Lease - 4 Copies
Fee Lease - 3 Copies

OIL CONSERVATION DIVISION
1220 South St. Francis Dr.
Santa Fe, New Mexico 87505

☐ AMENDED REPORT

WELL LOCATION AND ACREAGE DEDICATION PLAT

API Number	Pool Code 8090	Pool Name BRUSHY DRAW-DELAWARE EAST
Property Code 36900	Property Name RDX "16"	Well Number 1
OGRID No. 246289	Operator Name RKI EXPLORATION & PRODUCTION	Elevation 3056'

Surface Location

UL or lot No.	Section	Township	Range	Lot Idn	Feet from the	North/South line	Feet from the	East/West line	County
0	16	26 S	30 E		990	SOUTH	2310	EAST	EDDY

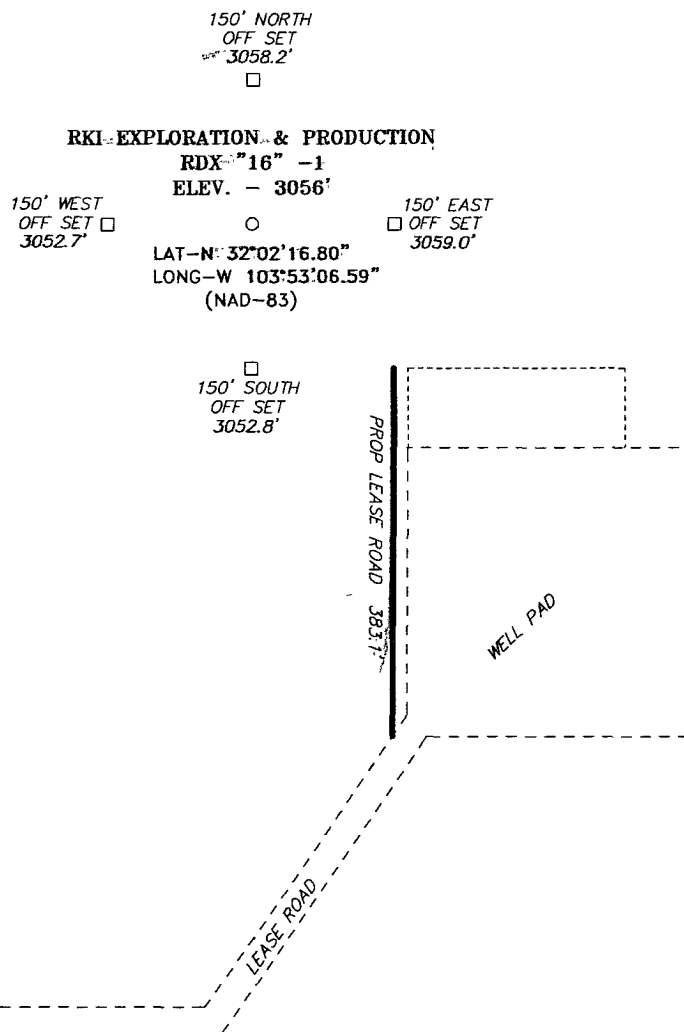
Bottom Hole Location If Different From Surface

UL or lot No.	Section	Township	Range	Lot Idn	Feet from the	North/South line	Feet from the	East/West line	County
Dedicated Acres 40	Joint or Infill	Consolidation Code	Order No.						

NO ALLOWABLE WILL BE ASSIGNED TO THIS COMPLETION UNTIL ALL INTERESTS HAVE BEEN CONSOLIDATED
OR A NON-STANDARD UNIT HAS BEEN APPROVED BY THE DIVISION

	OPERATOR CERTIFICATION I hereby certify that the information contained herein is true and complete to the best of my knowledge and belief, and that this organization either owns a working interest or unleased mineral interest in the land including the proposed bottom hole location pursuant to a contract with an owner of such a mineral or working interest, or to a voluntary pooling agreement or a compulsory pooling order heretofore entered by the division. Signature Date 12/15/07 Joe T. Janica Printed Name
	SURVEYOR CERTIFICATION I hereby certify that the well location shown on this plat was plotted from field notes of actual surveys made by me or under my supervision, and that the same is true and correct to the best of my belief. Date Surveyed Signature & Seal Professional Surveyor W.O. No. 18944 Certificate No. Gary L. Jones 7977 BASIN SURVEYS

SECTION 16, TOWNSHIP 26 SOUTH, RANGE 30 EAST, N.M.P.M.,
EDDY COUNTY, NEW MEXICO.



DIRECTIONS TO LOCATION:

FROM THE JUNCTION ON STATE HWY 18 AND HWY 128; GO WEST TO BUCK JACKSON ROAD, ON BUCK JACKSON, GO SOUTH APPROX. 1.0 MILES TO LEASE ROAD, ON LEASE ROAD GO WEST 5.0 MILES THENCE SOUTH FOR 2.0 MILES TO LEASE ROAD, ON LEASE ROAD GO EAST 0.6 MILES TO PROPOSED LEASE ROAD.



SCALE: 1" = 200'

BASIN SURVEYS P.O. BOX 1786 - HOBBS, NEW MEXICO

W.O. Number: 18944 Drawn By: J. M. SMALL

Date: 12-13-2007 Disk: JMS 18944W

RKI EXPLORATION & PRODUCTION

REF: RDX "16"-1 / Well Pad Topo

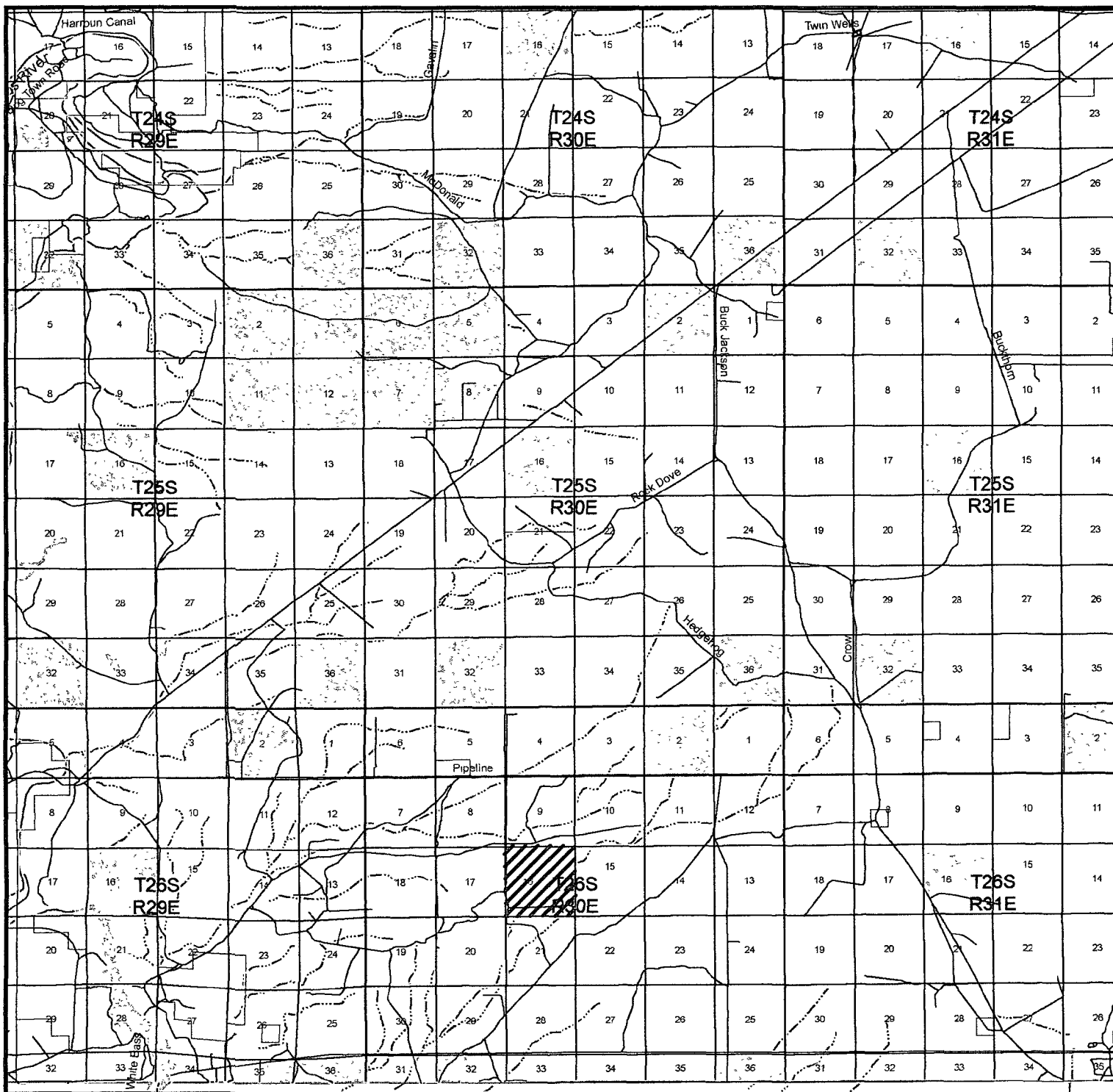
THE RDX "16"-1 LOCATED 990' FROM

THE SOUTH LINE AND 2310' FROM THE EAST LINE OF

SECTION 16, TOWNSHIP 26 SOUTH, RANGE 30 EAST,

N.M.P.M., EDDY COUNTY, NEW MEXICO.

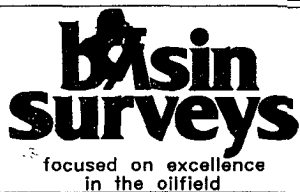
Survey Date: 12-12-2007 Sheet 1 of 1 Sheets



RDX "16" -1

Located at 990' FSL and 2310' FEL

Section 16, Township 26 South, Range 30 East,
N.M.P.M., Eddy County, New Mexico.



P.O. Box 1786
1120 N. West County Rd.
Hobbs, New Mexico 88241
(505) 393-7316 - Office
(505) 392-3074 - Fax
basinsurveys.com

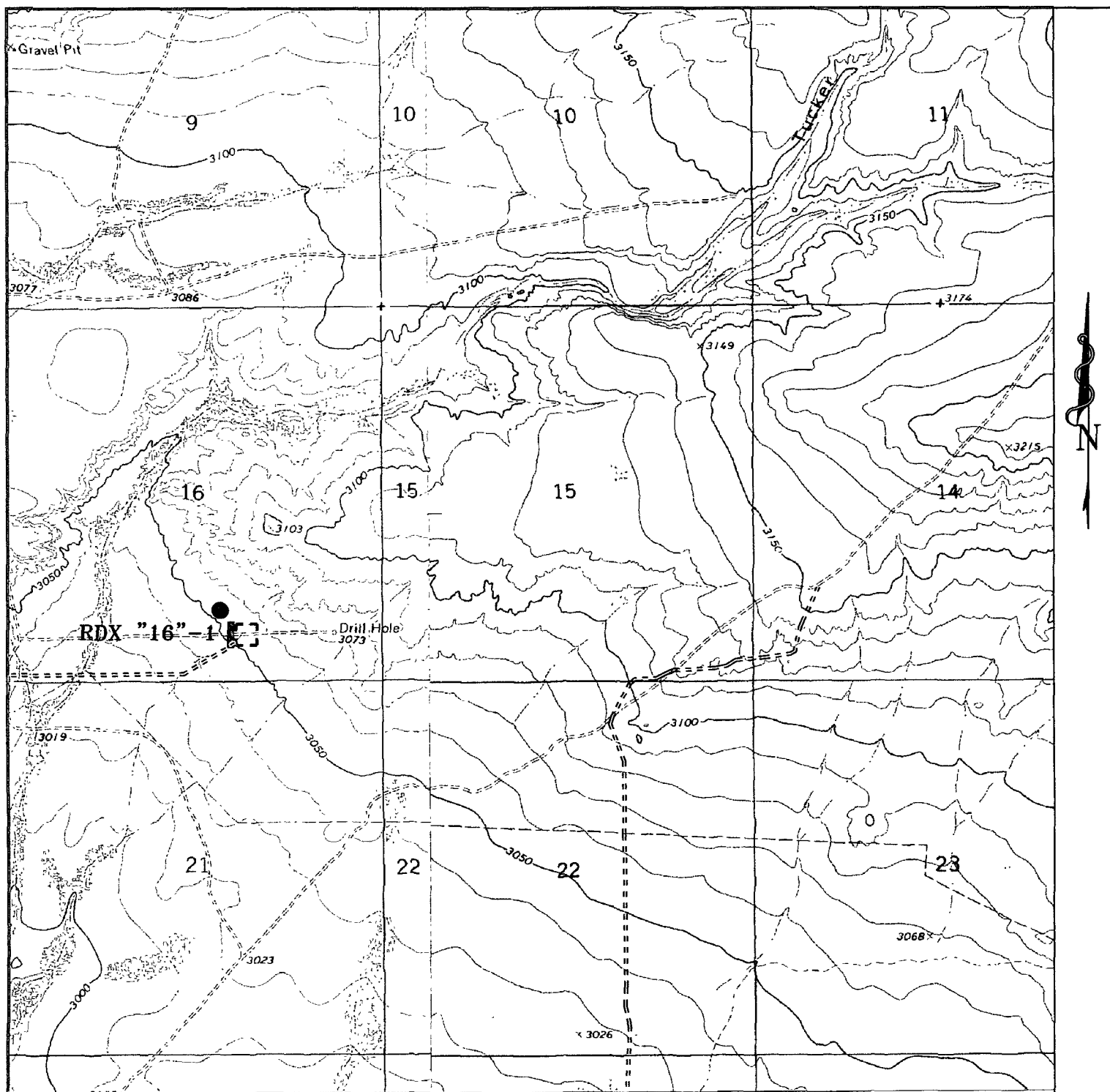
W.O. Number: JMS 18994TR

Survey Date: 12-12-2007

Scale: 1" = 2 MILES

Date: 12-13-2007

RKI
EXPLORATION &
PRODUCTION



RDX "16" -1

Located at 990' FSL AND 2310' FEL
Section 16, Township 26 South, Range 30 East,
N.M.P.M., Eddy County, New Mexico.



P.O. Box 1786
1120 N. West County Rd.
Hobbs, New Mexico 88241
(505) 393-7316 - Office
(505) 392-3074 - Fax
basinsurveys.com

W.O. Number: 18944T

Survey Date: 12-12-2007

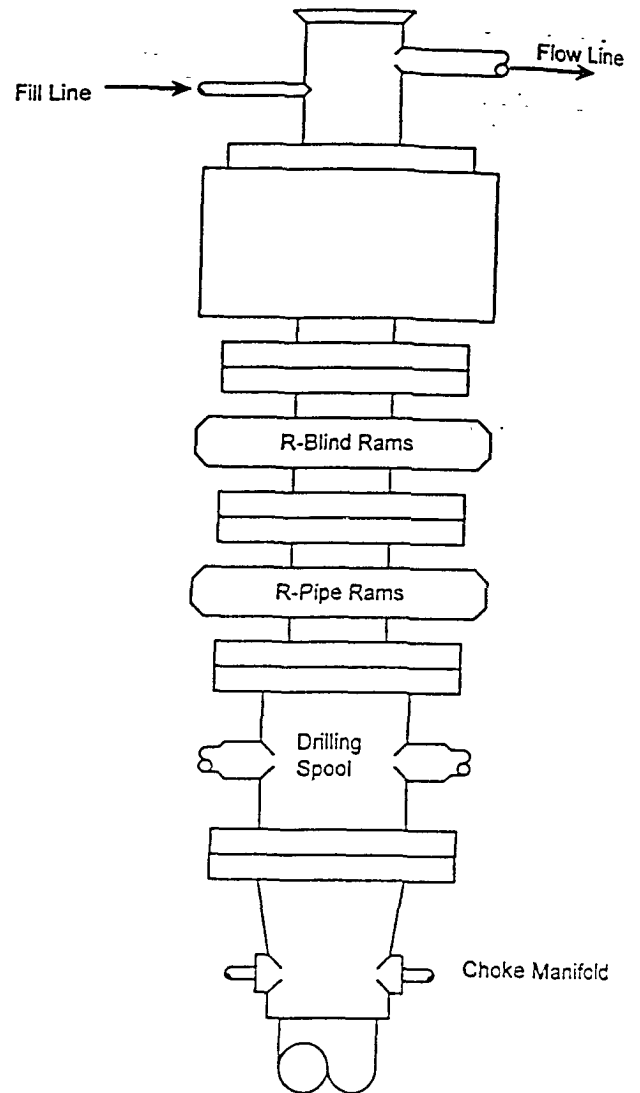
Scale: 1" = 2000'

Date: 12-13-2007

RKI
EXPLORATION &
PRODUCTION

BLOWOUT PREVENTER SYSTEM

3000 PSI



Type 900 SERIES
3000 PSI WP

Choke Manifold Assembly for 5M WP System

