

District I  
1625 N. French Dr., Hobbs, NM 88240  
District II  
1301 W. Grand Avenue, Artesia, NM 88210  
District III  
1000 Rio Brazos Road, Aztec, NM 87410  
District IV  
1220 S. St. Francis Dr., Santa Fe, NM 87505

State of New Mexico  
Energy Minerals and Natural Resources



Form C-101  
May 27, 2004

Oil Conservation Division  
1220 South St. Francis Dr.  
Santa Fe, NM 87505

Submit to appropriate District Office

MAR 05 2008

☐ AMENDED REPORT

OCD-ARTESIA

APPLICATION FOR PERMIT TO DRILL, RE-ENTER, DEEPEN, PLUGBACK, OR ADD A ZONE

<sup>1</sup> Operator Name and Address Yates Petroleum Corporation 105 S. 4 <sup>th</sup> Street Artesia, NM 88210		<sup>2</sup> OGRID Number 025575
		<sup>3</sup> API Number 30-015-31906
<sup>4</sup> Property Code 28507	<sup>5</sup> Property Name Suburb AZS State Com	<sup>6</sup> Well No 1
<sup>9</sup> Proposed Pool 1 Penasco Draw; San Andres Yeso		<sup>10</sup> Proposed Pool 2

<sup>7</sup> Surface Location

UL or lot no. A	Section 36	Township 18S	Range 25E	Lot Idn	Feet from the 660	North/South line North	Feet from the 660	East/West line East	County Eddy
--------------------	---------------	-----------------	--------------	---------	----------------------	---------------------------	----------------------	------------------------	----------------

<sup>8</sup> Proposed Bottom Hole Location If Different From Surface

UL or lot no.	Section	Township	Range	Lot Idn	Feet from the	North/South line	Feet from the	East/West line	County
---------------	---------	----------	-------	---------	---------------	------------------	---------------	----------------	--------

Additional Well Information

<sup>11</sup> Work Type Code P	<sup>12</sup> Well Type Code O	<sup>13</sup> Cable/Rotary N/A	<sup>14</sup> Lease Type Code S	<sup>15</sup> Ground Level Elevation 3460'GR
<sup>16</sup> Multiple N	<sup>17</sup> Proposed Depth N/A	<sup>18</sup> Formation Chester	<sup>19</sup> Contractor N/A	<sup>20</sup> Spud Date ASAP
Depth to Groundwater		Distance from nearest fresh water well		Distance from nearest surface water
<sup>Pit</sup> Liner: Synthetic <input type="checkbox"/> _____ mils thick Clay <input type="checkbox"/> Pit Volume _____ bbls Drilling Method: Closed-Loop System <input checked="" type="checkbox"/> Fresh Water <input type="checkbox"/> Brine <input type="checkbox"/> Diesel/Oil-based <input type="checkbox"/> Gas/Air <input type="checkbox"/>				

<sup>21</sup> Proposed Casing and Cement Program

Hole Size	Casing Size	Casing weight/foot	Setting Depth	Sacks of Cement	Estimated TOC
		IN PLACE			

<sup>22</sup> Describe the proposed program. If this application is to DEEPEN or PLUG BACK, give the data on the present productive zone and proposed new productive zone Describe the blowout prevention program, if any Use additional sheets if necessary.

Yates Petroleum Corporation plans to plugback and recompleate this well as follows: Set a 5-1/2" CIBP at 6194' with 35' cement on top. Set a 2<sup>nd</sup> 5-1/2" CIBP at 5790' with 35' cement on top. Perforate San Andres Yeso 2226'-2250' (25), 2294'-2300' (7), 2386'-2390' (5), 2450'-2455' (6), 2477'-2483' (7) and 2626'-2644' (19). Stimulate as needed.

<sup>23</sup> I hereby certify that the information given above is true and complete to the best of my knowledge and belief. I further certify that the drilling pit will be constructed according to NMOCD guidelines ☐, a general permit ☐, or an (attached) alternative OCD-approved plan ☐.

Signature: *Tina Huerta*

Printed name: Tina Huerta

Title: Regulatory Compliance Supervisor

E-mail Address: tinah@ypcnm.com

Date: February 4, 2008

Phone: 575-748-4168

OIL CONSERVATION DIVISION

Approved by:

*Kimberly M. Wilson*

Title:

*Compliance Officer*

Approval Date:

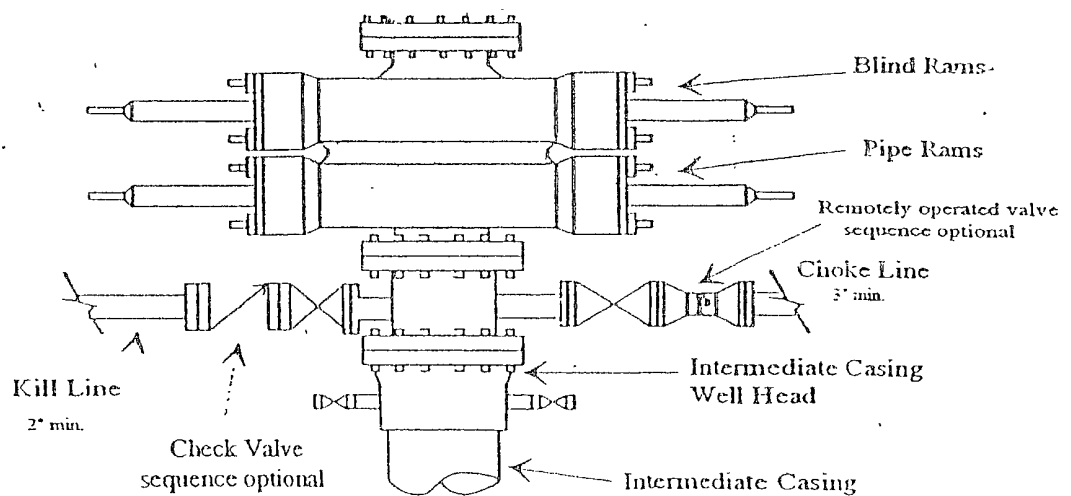
Expiration Date:

APPROVED MAR 14 2008

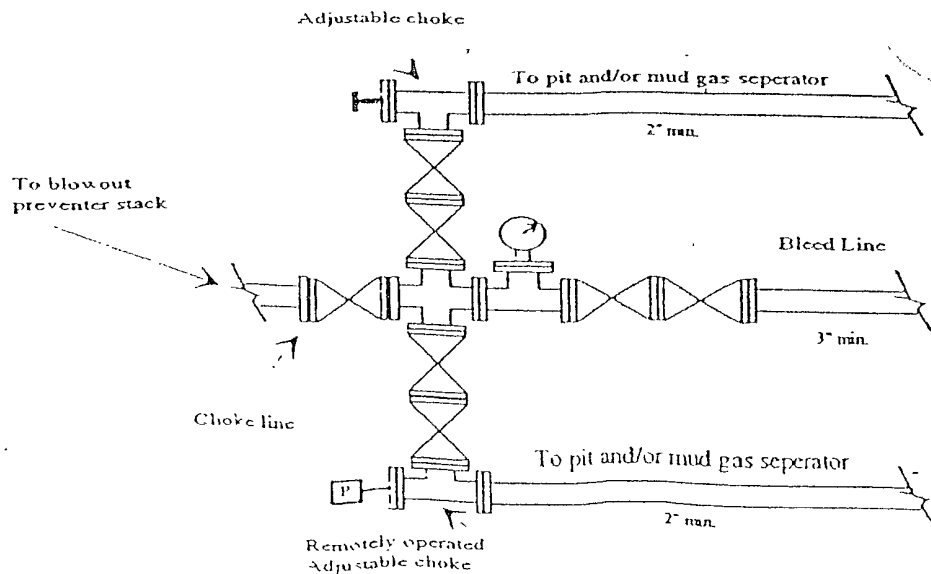
Conditions of Approval Attached ☐

# Yates Petroleum Corporation

## Typical 3,000 psi Pressure System Schematic



Typical 3,000 psi choke manifold assembly with at least these minimum features



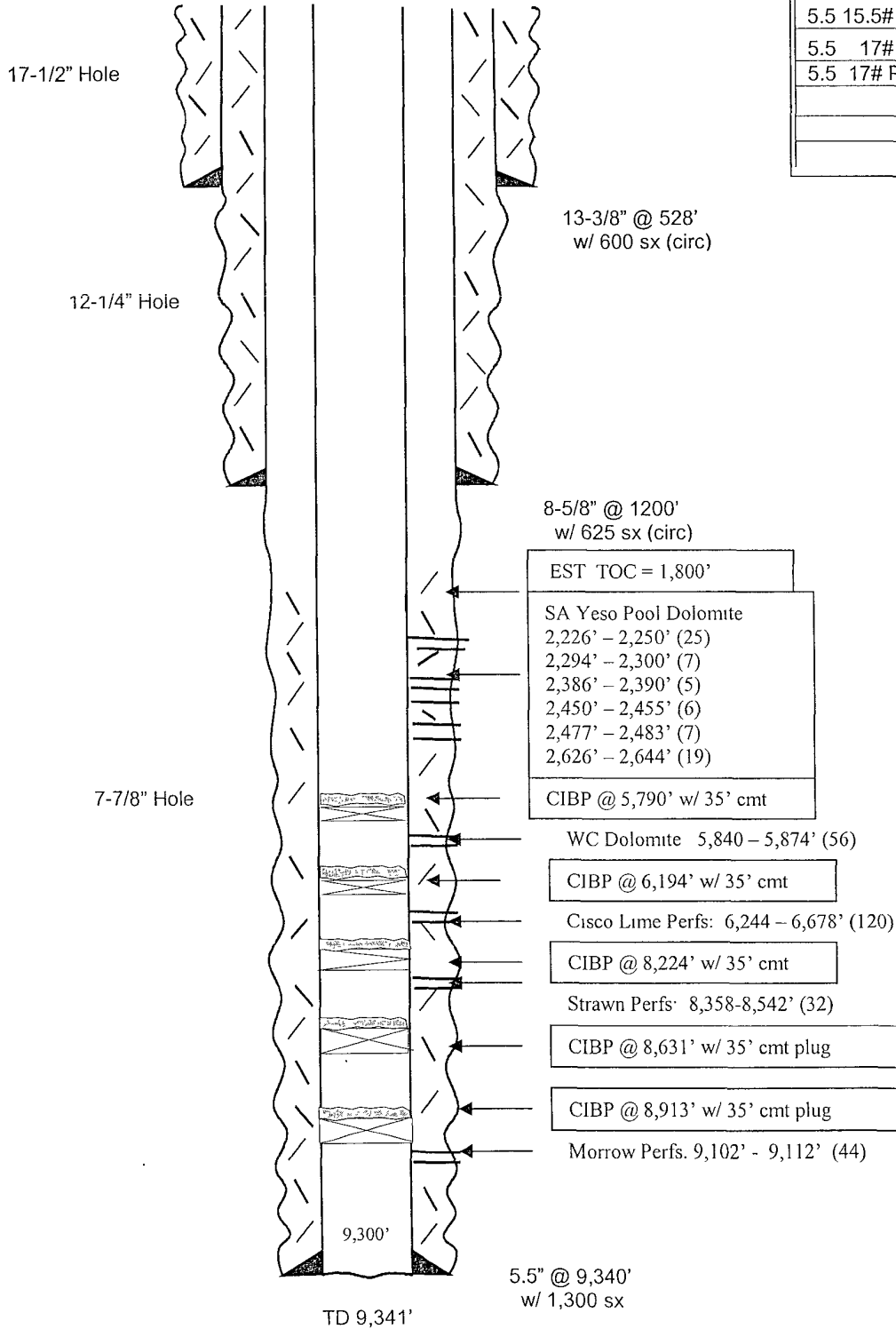
**WELL NAME:** Suburb "AZS" State Com No. 1      **FIELD:** Penasco Draw  
**LOCATION:** 660' FNL & 660' FEL Sec 36-18S-25E      Eddy County      NM  
**GL:** 3460'      **ZERO:**      **KB:** 3478'  
**SPUD DATE:** 9/9/02      **COMPLETION DATE:** 10/2/02  
**COMMENTS:** API # 30-015-31906

**CASING PROGRAM**

13-3/8" 48# H40 ST&C	528'
8-5/8" 24# J55 ST&C	1,200'
5.5 17# J55 LT&C	513.76'
5.5 15.5# J55 LT&C	5883.46'
5.5 17# J55 LT&C	1751.45'
5.5 17# P110 LT&C	1205.61'
	9,340'

After

Tops:	
Glorieta	2,114'
Yeso	2,281'
Tubb/Sd	3,759'
Abo/Sh	4,437'
WC	5,702'
Canyon Sd	7,650'
Strawn	8,274'
Atoka	8,681'
Morrow	8,963'
Chester Lm	9,222'



Not to Scale  
 2/26/08  
 DC/SM

~~District I~~  
1025 N. French Dr., Hobbs, NM 88240  
~~District II~~  
1301 W. Grand Avenue, Artesia, NM 88210  
~~District III~~  
1000 Rio Brazos Rd., Aztec, NM 87410  
~~District IV~~  
1220 S. St. Francis Dr., Santa Fe, NM 87505

State of New Mexico  
Energy, Minerals & Natural Resources Department  
OIL CONSERVATION DIVISION  
1220 South St. Francis Dr.  
Santa Fe, NM 87505

Form C-102  
Revised October 12, 2005  
Submit to Appropriate District Office  
State Lease - 4 Copies  
Fee Lease - 3 Copies

☐ AMENDED REPORT

WELL LOCATION AND ACREAGE DEDICATION PLAT

<sup>1</sup> API Number 30-015-31906	<sup>2</sup> Pool Code 50270	<sup>3</sup> Pool Name Penasco Draw; San Andres Yeso
<sup>4</sup> Property Code 28507	<sup>5</sup> Property Name Suburb AZS State Com	<sup>6</sup> Well Number 1
<sup>7</sup> OGRID No. 025575	<sup>8</sup> Operator Name Yates Petroleum Corporation	<sup>9</sup> Elevation 3460'GR

<sup>10</sup> Surface Location

UL or lot no. A	Section 36	Township 18S	Range 25E	Lot Idn	Feet from the 660	North/South line North	Feet from the 660	East/West line East	County Eddy
--------------------	---------------	-----------------	--------------	---------	----------------------	---------------------------	----------------------	------------------------	----------------

<sup>11</sup> Bottom Hole Location If Different From Surface

UL or lot no.	Section	Township	Range	Lot Idn	Feet from the	North/South line	Feet from the	East/West line	County
<sup>12</sup> Dedicated Acres 40	<sup>13</sup> Joint or Infill	<sup>14</sup> Consolidation Code	<sup>15</sup> Order No.						

No allowable will be assigned to this completion until all interests have been consolidated or a non-standard unit has been approved by the division.

16					<b>17 OPERATOR CERTIFICATION</b> <i>I hereby certify that the information contained herein is true and complete to the best of my knowledge and belief, and that this organization either owns a working interest or unleased mineral interest in the land including the proposed bottom hole location or has a right to drill this well at this location pursuant to a contract with an owner of such a mineral or working interest, or to a voluntary pooling agreement or a compulsory pooling order heretofore entered by the division</i>  Signature February 4, 2008 Date Tina Huerta Printed Name
					<b>18 SURVEYOR CERTIFICATION</b> <i>I hereby certify that the well location shown on this plat was plotted from field notes of actual surveys made by me or under my supervision, and that the same is true and correct to the best of my belief.</i> Date of Survey Signature and Seal of Professional Surveyor.
					Certificate Number

MARTIN YATES, III  
1912-1985

FRANK W. YATES  
1936-1986



105 SOUTH FOURTH STREET  
ARTESIA, NEW MEXICO 88210-2118  
TELEPHONE (575) 748-1471

S.P. YATES  
CHAIRMAN EMERITUS

JOHN A. YATES  
CHAIRMAN OF THE BOARD

FRANK YATES, JR.  
PRESIDENT

PEYTON YATES  
DIRECTOR

JOHN A. YATES, JR.  
DIRECTOR

February 4, 2008

Oil Conservation Division, District II Office  
1301 W. Grand Ave.  
Artesia, NM 88210

Re: Suburb AZS State Com #1  
Section 36-T18S-R25E  
Eddy County, New Mexico  
H2S Contingency Plan

Sources at Yates Petroleum Corporation have relayed information to me that they believe there will not be enough H2S anticipated from the surface to the San Andres Yeso formation to even meet the OCD's minimum requirements for the submission of a contingency plan per Rule 118.

Thank you,

YATES PETROLEUM CORPORATION

Tina Huerta  
Regulatory Compliance Supervisor