

Submit 3 Copies To Appropriate District Office  
District I  
1625 N French Dr., Hobbs, NM 88240  
District II  
1301 W Grand Ave., Artesia, NM 88210  
District III  
1000 Rio Brazos Rd., Aztec, NM 87410  
District IV  
1220 S St Francis Dr., Santa Fe, NM 87505

State of New Mexico  
Energy, Minerals and Natural Resources

Form C-103  
May 27, 2004

OIL CONSERVATION DIVISION  
1220 South St. Francis Dr.  
Santa Fe, NM 87505



WELL API NO. 30-015-03580
5. Indicate Type of Lease STATE <input checked="" type="checkbox"/> FEE <input type="checkbox"/>
6. State Oil & Gas Lease No.
7. Lease Name or Unit Agreement Name <b>LEONARD STATE</b>
8. Well Number 3
9. OGRID Number 1903
10. Pool name N/A

**SUNDRY NOTICES AND REPORTS ON WELLS**  
(DO NOT USE THIS FORM FOR PROPOSALS TO DRILL OR TO DEEPEN OR PLUG BACK TO A DIFFERENT RESERVOIR USE "APPLICATION FOR PERMIT" (FORM C-101) FOR SUCH PROPOSALS)

1. Type of Well: Oil Well ☒ Gas Well ☐ Other ☐ **APR 23 2008**

2. Name of Operator  
**BEACH EXPLORATION, INC.** **OCD-ARTESIA**

3. Address of Operator  
800 NORTH MARIENFELD, SUITE 200, MIDLAND, TX 79701

4. Well Location  
Unit Letter C; 330 feet from the NORTH line and 2310 feet from the WEST line  
Section 12 Township 19S Range 29E NMPM EDDY County

11. Elevation (Show whether DR, RKB, RT, GR, etc.)

Pit or Below-grade Tank Application ☐ or Closure ☐

Pit type \_\_\_\_\_ Depth to Groundwater \_\_\_\_\_ Distance from nearest fresh water well \_\_\_\_\_ Distance from nearest surface water \_\_\_\_\_

Pit Liner Thickness: \_\_\_\_\_ mil Below-Grade Tank: Volume \_\_\_\_\_ bbls; Construction Material \_\_\_\_\_

12. Check Appropriate Box to Indicate Nature of Notice, Report or Other Data

NOTICE OF INTENTION TO:	SUBSEQUENT REPORT OF:
PERFORM REMEDIAL WORK <input type="checkbox"/>	REMEDIAL WORK <input type="checkbox"/>
TEMPORARILY ABANDON <input type="checkbox"/>	ALTERING CASING <input type="checkbox"/>
PULL OR ALTER CASING <input type="checkbox"/>	COMMENCE DRILLING OPNS. <input type="checkbox"/>
PLUG AND ABANDON <input type="checkbox"/>	P AND A <input type="checkbox"/>
CHANGE PLANS <input type="checkbox"/>	CASING/CEMENT JOB <input type="checkbox"/>
MULTIPLE COMPL <input type="checkbox"/>	
OTHER: RE-PLUG FOR EASTLAND QUEEN UNIT WATER FLOOD <input checked="" type="checkbox"/>	OTHER: <input type="checkbox"/>

13. Describe proposed or completed operations. (Clearly state all pertinent details, and give pertinent dates, including estimated date of starting any proposed work). SEE RULE 1103. For Multiple Completions: Attach wellbore diagram of proposed completion or recompletion.

Beach plans to move Triple N into the area in May 2008 to re-plug this and two other wells prior to initiation of a waterflood

Re-Plugging Procedure - PER OCD INSTRUCTIONS ORDER NO. R-12833

1. Find wellbore (dry hole marker is on the ground and not in the well)
2. Drill out 50sx surface plug w/ 9 7/8" bit (est 0' - 124') and tag 8 5/8" csg at 130'
3. POOH. RIH w/ 7 7/8" bit to get inside 8 5/8" csg at 130'
4. Drill out 8 5/8" 25sx cmt shoe plug w/ 7 7/8" bit (est 280' - 400')
5. Clean out hole to 2445' (est top of bottom plug) tag and record bottom plug
6. Load and circulate hole w/ 9 ppg mud
7. Pull tbg to 2300' and pump 50sx cmt plug WOC and tag at 2200' or less
8. Pull tbg to 1750' and pump 50sx plug
9. Pull tbg to 1287' and pump 50sx plug WOC and tag at 1187' or less
10. Pull tbg to 425' and pump 50sx cmt plug WOC and tag at 325' or less
11. Pull tbg to 180' and pump 60sx plug WOC and tag at 80' or less
12. Run tbg to 60' and pump 45sx surface plug and install regulation dry hole marker

**Notify OCD 24 hrs. prior to  
Any work done.**

I hereby certify that the information above is true and complete to the best of my knowledge and belief. I further certify that any pit or below-grade tank has been/will be constructed or closed according to NMOCD guidelines ☐, a general permit ☐ or an (attached) alternative OCD-approved plan ☐.

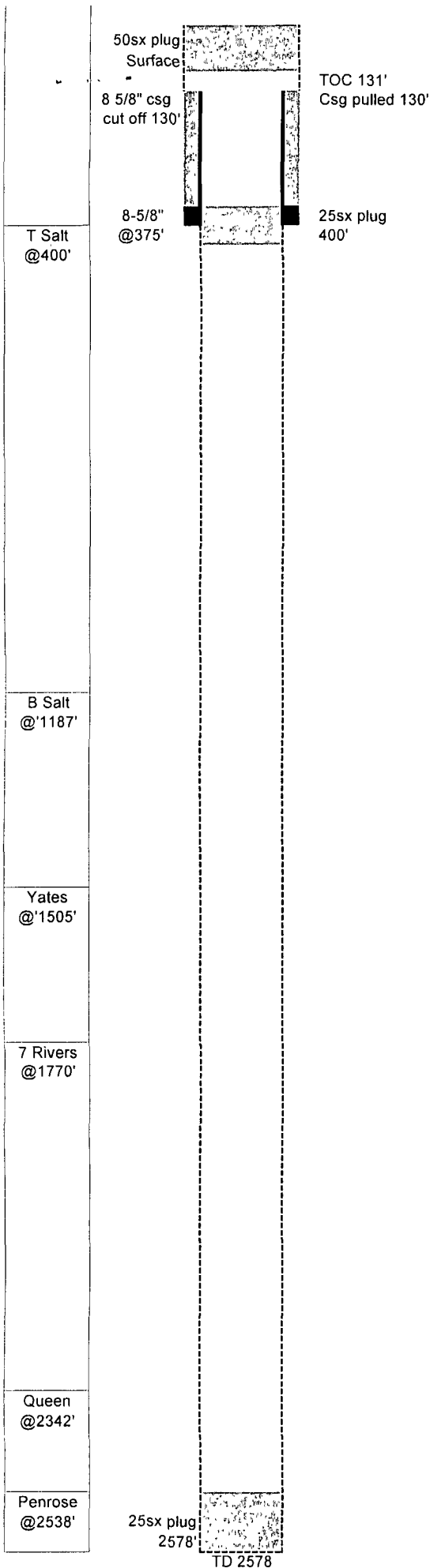
SIGNATURE Jack M. Rose TITLE Engineer DATE April 22, 2008

Type or print name Jack M. Rose E-mail address: bmartin@beachexp.com Telephone No. (432) 683-6226

**For State Use Only**

APPROVED BY: Gerry Guye TITLE Compliance Officer DATE APR 28 2008

Conditions of Approval (if any):



### Leonard State #3

GL: 3,399  
KB:  
TD: 2,578  
PBD:  
Fr. Wtr:  
Legal: 330 from N  
2,310 from W

Status: P&A  
Perfs:  
API: 30-015-03580  
NM Lse: B-7717  
Field:  
Logs: Radioactivity log  
Archeological:

Casing	Wt	Type	Set	Cmt	Hole	TOC	Method
8-5/8"	32.00	J-55	375	50	11"	130'	130' csg pulled 7-7/8" assumed

10-Sep-62 Spud well  
Chemical Express, Inc. - Leonard State #3

28-Oct-62 Drilled to 2578' and Abandoned - Chemical Express  
Well was dry  
25sx plug at 2578  
25sx plug at 400  
8-5/8" csg cut and pulled at 130'  
50sx plug at surface w/steel marker

**BEFORE**

45sx Surf Plug 0' - 60'

Tag  
New 60sx plug  
80' - 180'

Tag  
New 50sx plug  
325' - 425'

T Salt  
@400'

B Salt  
@1187' Tag  
New 50sx plug  
1187' - 1287'

Yates  
@1505'

New 50sx plug  
1650' - 1750'

7 Rivers  
@1770'

Tag  
New 50sx plug  
2200' - 2300'

Queen  
@2342'

Clean Out to est 2445'  
Tag Old Bottom Plug

Penrose  
@2538'

2578'

TD 2578

Drill Out 50sx Surf Plg  
TOC 131'  
Csg pulled 130'  
8 5/8" csg  
cut off 130'

Drill Out  
25sx plug @ 400'  
8-5/8"  
@375'

orig 25sx plug

## Leonard State #3

GL: 3,399

KB:

TD: 2,578

PBD:

Fr. Wtr:

Legal: 330 from N  
2,310 from W

Section: 12-C

Township: 19S

Range: 29E

County: Eddy

Status: P&A

Perfs:

API: 30-015-03580

NM Lse: B-7717

Field:

Logs: Radioactivity log

Archeological:

Casing	Wt	Type	Set	Cmt	Hole	TOC	Method
8-5/8"	32 00	J-55	375	50	11"	130'	130' csg pulled 7-7/8" assumed

10-Sep-62 Spud well  
Chemical Express, Inc. - Leonard State #3

28-Oct-62 Drilled to 2578' and Abandoned - Chemical Express

Well was dry  
25sx plug at 2578  
25sx plug at 400  
8-5/8" csg cut and pulled at 130'  
50sx plug at surface w/steel marker

## AFTER

### Re-Plugging Procedure

1. Find wellbore (dry hole marker is on the ground and not in the well)
2. Drill out 50sx surface plug w/ 9 7/8" bit (est 0' - 124') and tag 8 5/8" csg at 130'
3. POOH. RIH w/ 7 7/8" bit to get inside 8 5/8" csg at 130'
4. Drill out 8 5/8" 25sx cmt shoe plug w/ 7 7/8" bit (est 280' - 400')
5. Clean out hole to 2445' (est top of bottom plug) tag and record bottom plug
6. Load and circulate hole w/ 9 ppg mud
7. Pull tbq to 2300' and pump 50sx cmt plug WOC and tag at 2200' or less
8. Pull tbq to 1750' and pump 50sx plug
9. Pull tbq to 1287' and pump 50sx plug WOC and tag at 1187' or less
10. Pull tbq to 425' and pump 50sx cmt plug WOC and tag at 325' or less
11. Pull tbq to 180' and pump 60sx plug WOC and tag at 80' or less
12. Run tbq to 60' and pump 45sx surface plug and install regulation dry hole marker