

## District I

1625 N. French Dr., Hobbs, NM 88240

## District II

1301 W. Grand Avenue, Artesia, NM 88210

## District III

1000 Rio Brazos Road, Aztec, NM 87410

## District IV

1220 S. St. Francis Dr., Santa Fe, NM 87505

State of New Mexico  
Energy Minerals and Natural Resources

Form C-101

May 27, 2004

## Oil Conservation Division

1220 South St. Francis Dr.

Santa Fe, NM 87505

Submit to appropriate District Office

☐ AMENDED REPORT

## APPLICATION FOR PERMIT TO DRILL, RE-ENTER, DEEPEN, PLUGBACK, OR ADD A ZONE

<sup>1</sup> Operator Name and Address RKI EXPLORATION & PRODUCTION, LLC. 3817 NW EXPRESSWAY SUITE 950 OKLAHOMA CITY, OKLAHOMA 73112		<sup>2</sup> OGRID Number 246289
<sup>3</sup> Property Code 303271	<sup>4</sup> Property Name PINNACLE STATE	<sup>5</sup> API Number 30-015-36332
<sup>6</sup> Proposed Pool 1 Culebra Bluff - BONE SPRING, S. 75011		<sup>7</sup> Well No. 27
<sup>8</sup> Proposed Pool 2		

<sup>7</sup> Surface Location

UL or lot no.	Section	Township	Range	Lot Idn	Feet from the	North/South line	Feet from the	East/West line	County
H	36	22S	28E		2310'	NORTH	330'	EAST	EDDY

<sup>8</sup> Proposed Bottom Hole Location If Different From Surface

UL or lot no.	Section	Township	Range	Lot Idn	Feet from the	North/South line	Feet from the	East/West line	County

## Additional Well Information

<sup>11</sup> Work Type Code N	<sup>12</sup> Well Type Code O	<sup>13</sup> Cable/Rotary ROTARY	<sup>14</sup> Lease Type Code S	<sup>15</sup> Ground Level Elevation 3133'
<sup>16</sup> Multiple NO	<sup>17</sup> Proposed Depth 7075'	<sup>18</sup> Formation BONE SPRING	<sup>19</sup> Contractor PERMIAN DRILLING	<sup>20</sup> Spud Date WHEN APPROVED
Depth to Groundwater 50'		Distance from nearest fresh water well unknown		Distance from nearest surface water approximately 2 mi. from Pecos R.
Pit: Liner: Synthetic <input type="checkbox"/> _____ mils thick Clay <input type="checkbox"/> Pit Volume: _____ bbls Drilling Method: _____ Closed-Loop System <input checked="" type="checkbox"/> Fresh Water <input checked="" type="checkbox"/> Brine <input checked="" type="checkbox"/> Diesel/Oil-based <input type="checkbox"/> Gas/Air <input type="checkbox"/>				

<sup>21</sup> Proposed Casing and Cement Program

Hole Size	Casing Size	Casing weight/foot	Setting Depth	Sacks of Cement	Estimated TOC
17 1/2"	14"	CONDUCTOR	80'	Redi-mix	Surface
11"	8 5/8"	32#	450'	181 Sx.	SURFACE
7 7/8"	5 1/2"	17#	7075'	542 Sx.	Surface

<sup>22</sup> Describe the proposed program. If this application is to DEEPEN or PLUG BACK, give the data on the present productive zone and proposed new productive zone. Describe the blowout prevention program, if any. Use additional sheets if necessary.

SEE ATTACHED SHEET

**NOTE:** New Pit Rule  
NMAC 19-15-17

<sup>23</sup> I hereby certify that the information given above is true and complete to the best of my knowledge and belief. I further certify that the drilling pit will be constructed according to NMOCD guidelines ☒ a general permit ☐, or an (attached) alternative OCD-approved plan ☐.

Printed name: Joe T. Janica

Title: Permit Engineer

E-mail Address: joejanica@valornet.com

Date: 05/16/08

Phone: 575-391-8503

## OIL CONSERVATION DIVISION

Approved by:

Title:

Approval Date: 5/21/08

Expiration Date: 5/21/10

Conditions of Approval Attached ☐

1. Drill 17½" hole to 80'. Set 80' of 14" conductor pipe and cement to surface with Redi-mix.
2. Drill 11" hole to 450'. Run and set 450' of 8 5/8" 32# J-55 ST&C casing. Cement with 181 Sx. of Class "C" cement + 2% CaCl + .125# Flocele/Sx. Yield 1.34, circulate cement to surface.
3. Drill 7 7/8" hole to 7075'. Run and set 7075' of 5½" 17# J-55 LT&C casing. Cement with 341 Sx of 40/60 (CemPlus blend/LITEFIL(24#/CF) + 1% ANTISETTLING AGENT + .3% TIC DISPERSANT + .2% ANTIFOAMER + .125#/Sx. of polyflake/Sx. Yield 2.61, tail in with 40/60/ (CemPlus blend/LITEFIL(24#/CF) + .2% MIDTEMP RETARDER + 1% ANTISETTLING AGENT + .3% TIC DISPERSANT + .2% ANTIFOAMER + .125#/Sx of polyflake/Sx. Yield 2.27, circulate cement to surface.
4. Cement volumes may be altered after open hole logs have been run to check the caliper log it see if changes to volumes will be required.
5. Fresh water will be used to drill the surface hole, and brine will be used to drill the 7 7/8" hole to reduce wash out of the salt section.
6. The Bureau of Land Management does not have any records that indicate the presence of H<sub>2</sub>S in this area. RKI Exploration & Production, LLC. has not encountered and H<sub>2</sub>S during the drilling of other wells on this lease.

DISTRICT I  
1625 N. French Dr., Hobbs, NM 88240

DISTRICT II  
1301 W. Grand Avenue, Artesia, NM 88210

DISTRICT III  
1000 Rio Brazos Rd., Aztec, NM 87410

DISTRICT IV  
1220 S. St. Francis Dr., Santa Fe, NM 87505

State of New Mexico  
Energy, Minerals and Natural Resources Department

Form C-102  
Revised October 12, 2005

Submit to Appropriate District Office  
State Lease - 4 Copies  
Fee Lease - 3 Copies

**OIL CONSERVATION DIVISION**  
1220 South St. Francis Dr.  
Santa Fe, New Mexico 87505

☐ AMENDED REPORT

WELL LOCATION AND ACREAGE DEDICATION PLAT

API Number		Pool Code 15011	Pool Name Culebra Bluff - BONESPRING, S
Property Code 303271	Property Name PINNACLE STATE		Well Number 27
OGRID No. 256289	Operator Name RKI EXPLORATION & PRODUCTION		Elevation 3133'

Surface Location

UL or lot No.	Section	Township	Range	Lot Idn	Feet from the	North/South line	Feet from the	East/West line	County
H	36	22 S	28 E		2310	NORTH	330	EAST	EDDY

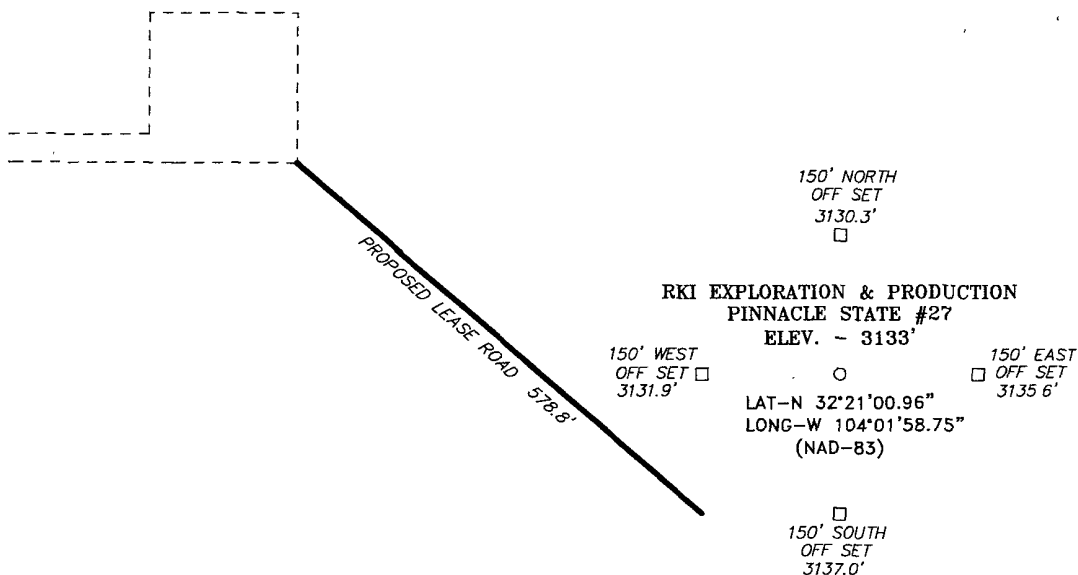
Bottom Hole Location If Different From Surface

UL or lot No.	Section	Township	Range	Lot Idn	Feet from the	North/South line	Feet from the	East/West line	County
Dedicated Acres 80	Joint or Infill	Consolidation Code	Order No.						

NO ALLOWABLE WILL BE ASSIGNED TO THIS COMPLETION UNTIL ALL INTERESTS HAVE BEEN CONSOLIDATED  
OR A NON-STANDARD UNIT HAS BEEN APPROVED BY THE DIVISION

	<p><b>OPERATOR CERTIFICATION</b></p> <p>I hereby certify that the information contained herein is true and complete to the best of my knowledge and belief, and that this organization either owns a working interest or unleased mineral interest in the land including the proposed bottom hole location pursuant to a contract with an owner of such a mineral or working interest, or to a voluntary pooling agreement or a compulsory pooling order heretofore entered by the division.</p> <p><i>Joe T. Janica</i> Signature Date 05/16/08</p> <p>Joe T. Janica Printed Name</p>	
	<p><b>SURVEYOR CERTIFICATION</b></p> <p>I hereby certify that the well location shown on this plat was plotted from field notes of actual surveys made by me or under my supervision, and that the same is true and correct to the best of my belief.</p> <p>MAY 7, 2008</p> <p>Date Surveyed</p> <p>Signature &amp; Seal of Professional Surveyor</p> <p><i>GARY L JONES</i> GARY L JONES NEW MEXICO PROFESSIONAL SURVEYOR REG. NO. 19605 7977</p> <p>Certificate No. 7977</p> <p>BASIN SURVEYS</p>	

SECTION 36, TOWNSHIP 22 SOUTH, RANGE 28 EAST, N.M.P.M.,  
EDDY COUNTY, NEW MEXICO.



**DIRECTIONS TO LOCATION:**

FROM THE JUNCTION OF HWY 62-180 AND REFINERY ROAD, GO SOUTHERLY ON REFINERY ROAD FOR 10.3 MILES TO LEASE ROAD, ON LEASE ROAD GO NORTHEAST 0.9 MILES, THENCE SOUTHEAST WINDING NORTHEAST 1.2 MILES TO WELL PAD AND PROPOSED LEASE ROAD.



SCALE: 1" = 200'

**BASIN SURVEYS** P.O. BOX 1786 -HOBBS, NEW MEXICO

W.O. Number: 19605 Drawn By: J. M. SMALL

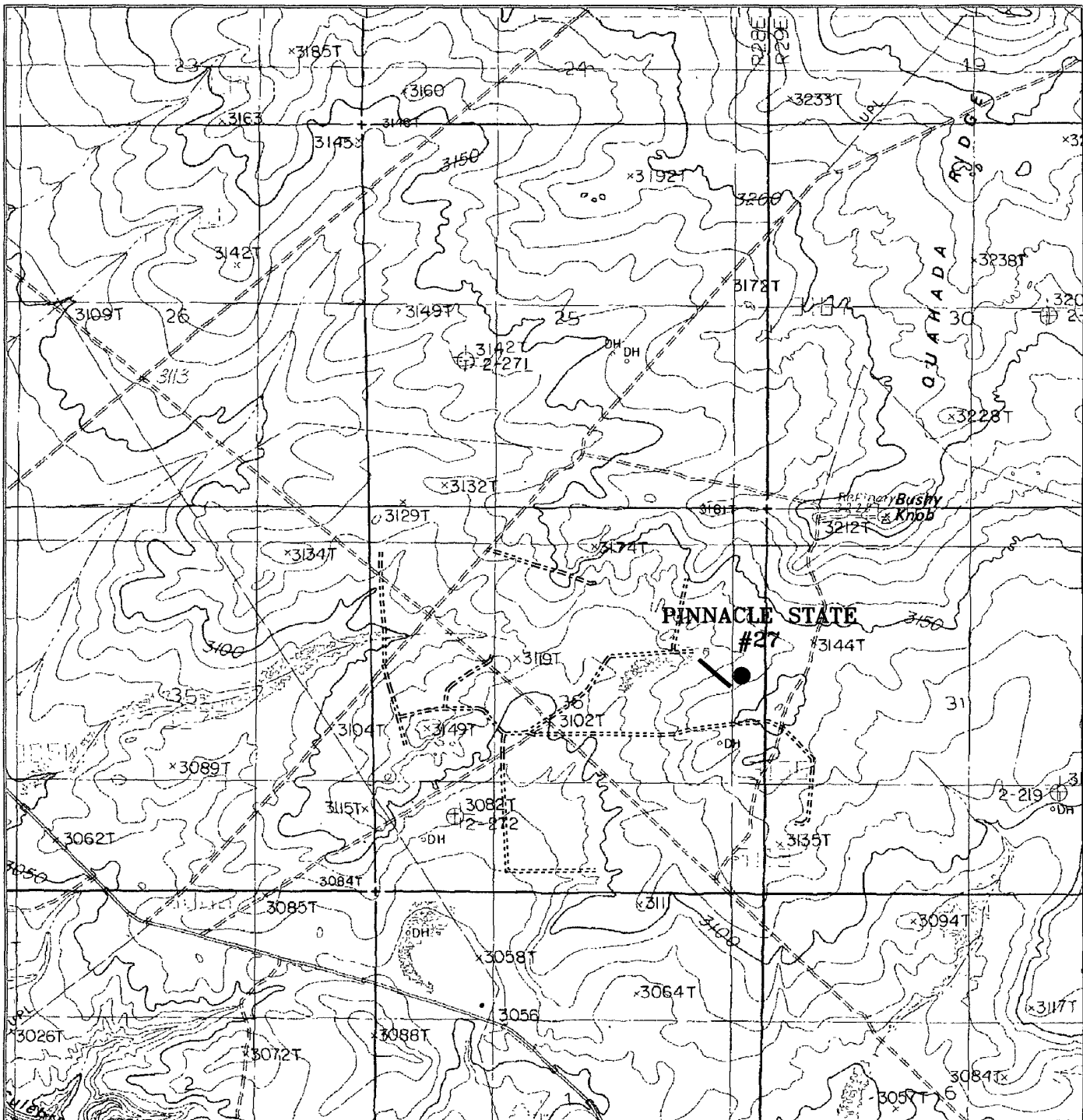
Date: 05-08-2008 Disk: JMS 19605

**RKI EXPLORATION & PRODUCTION**

REF: PINNACLE STATE #27 / Well Pad Topo

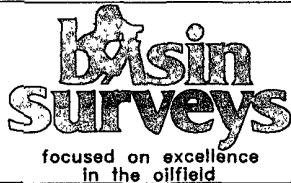
THE PINNACLE STATE #27 LOCATED 2310' FROM  
THE NORTH LINE AND 330' FROM THE EAST LINE OF  
SECTION 36, TOWNSHIP 22 SOUTH, RANGE 28 EAST,  
N.M.P.M., EDDY COUNTY, NEW MEXICO.

Survey Date: 05-07-2008 Sheet 1 of 1 Sheets



## PINNACLE STATE #27

Located at 2310' FNL AND 330' FEL  
Section 36, Township 22 South, Range 28 East,  
N.M.P.M., Eddy County, New Mexico.



P.O. Box 1786  
1120 N. West County Rd.  
Hobbs, New Mexico 88241  
(505) 393-7316 - Office  
(505) 392-3074 - Fax  
basinsurveys.com

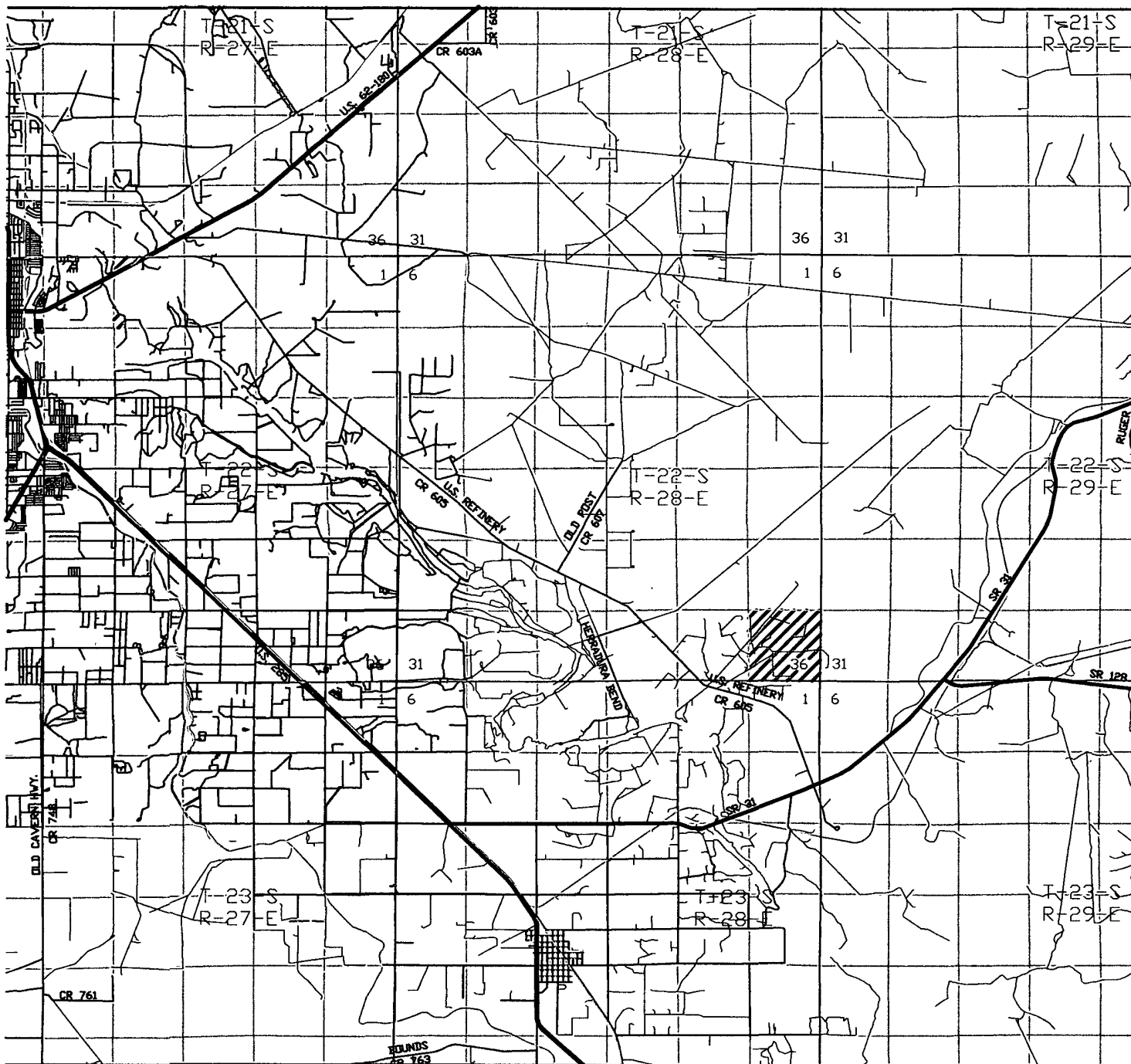
W.O. Number: 19605

Survey Date: 05-07-2008

Scale: 1" = 2000'

Date: 05-08-2008

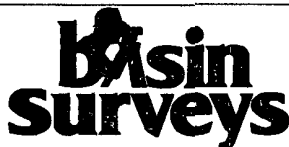
RKI  
EXPLORATION &  
PRODUCTION



# PINNACLE STATE #27

Located at 2310' FNL and 330' FEL

Section 36, Township 22 South, Range 28 East,  
N.M.P.M., Eddy County, New Mexico.



focused on excellence  
in the oilfield

P.O. Box 1786  
1120 N. West County Rd.  
Hobbs, New Mexico 88241  
(505) 393-7316 - Office  
(505) 392-3074 - Fax  
basinsurveys.com

W.O. Number: JMS 19605

Survey Date: 05-07-2008

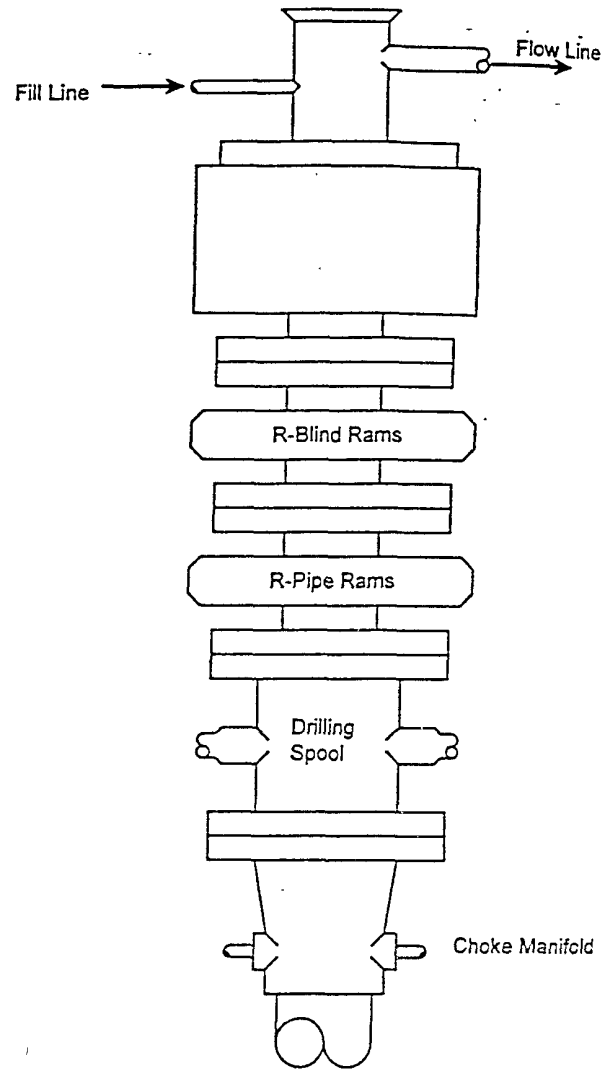
Scale: 1" = 2 MILES

Date: 05-08-2008

RKI  
EXPLORATION &  
PRODUCTION

# BLOWOUT PREVENTER SYSTEM

3000 PSI



Type 900 SERIES  
3000 PSI WP

## Choke Manifold Assembly for 5M WP System

