

State of New Mexico  
Energy, Minerals & Natural Resources

Form C-101  
May 27, 2004

District I  
1625 N. French Dr., Hobbs, NM 88240  
District II  
1301 W. Grand Avenue, Artesia, NM 88210  
District III  
1000 Rio Brazos Rd., Aztec, NM 87410  
District IV  
1220 S. St. Francis Dr., Santa Fe, NM 87505

Oil Conservation Division  
1220 S. St. Francis Dr.  
Santa Fe, NM 87505

MAY 21 2008

OCD-ARTESIA

Submit to appropriate District Office

☐ AMENDED REPORT

APPLICATION FOR PERMIT TO DRILL, RE-ENTER, DEEPEN, PLUGBACK, OR ADD A ZONE

<sup>1</sup> Operator Name and Address Nearburg Producing Company 3300 N A St., Bldg 2, Ste 120, Midland, TX 79705		<sup>2</sup> OGRID Number 015742
<sup>4</sup> Property Code 37187	<sup>3</sup> Property Name Boyd State 26L	<sup>3</sup> API Number 30-015-36348
<sup>9</sup> Proposed Pool 1 Seven Rivers, Glorieta-Yeso		<sup>6</sup> Well No. 1
<sup>10</sup> Proposed Pool 2		

<sup>7</sup> Surface Location

UL or lot no.	Section	Township	Range	Lot. Idn	Feet from the	North/South Line	Feet from the	East/West line	County
L	26	19S	25E		1980	South	660	West	Eddy

<sup>8</sup> Proposed Bottom Hole Location If Different From Surface

UL or lot no.	Section	Township	Range	Lot. Idn	Feet from the	North/South Line	Feet from the	East/West line	County

Additional Well Location

<sup>11</sup> Work Type Code New Drill	<sup>12</sup> Well Type Code Oil	<sup>13</sup> Cable/Rotary R	<sup>14</sup> Lease Type Code State	<sup>15</sup> Ground Level Elevation 3466
<sup>16</sup> Multiple No	<sup>17</sup> Proposed Depth 3000	<sup>18</sup> Formation Glorieta-Yeso	<sup>19</sup> Contractor United	<sup>20</sup> Spud Date 6/1/08
Depth to ground water		Distance from nearest fresh water well		Distance from nearest surface water
Pit: Liner: Synthetic <input type="checkbox"/> _____ mils thick Clay <input type="checkbox"/> Pit Volume _____ bbls Drilling Method: Closed-Loop System <input type="checkbox"/> Fresh Water <input type="checkbox"/> Brine <input type="checkbox"/> Diesel/Oil-based <input type="checkbox"/> Gas/Air <input type="checkbox"/>				

<sup>21</sup> Proposed Casing and Cement Program

Hole Size	Casing Size	Casing weight/foot	Setting Depth	Sacks of Cement	Estimated TOC
12-1/4	8-5/8	24#	800	350 sxs	Surface
7-7/8	5-1/2	17#	3000	400 sxs	Surface

<sup>22</sup> Describe the proposed program. If this application is to DEEPEN or PLUG BACK, give the data on the present productive zone and proposed new productive zone. Describe the blowout prevention program, if any. Use additional sheets if necessary.

NPC proposes to drill the well sufficient depth to evaluate the Yeso Formation. Perf, test and stimulate as necessary to establish production.

Acreege Dedication is 40 acres.

NOTE: NEW PIT RULE

<sup>23</sup> I hereby certify that the information given above is true and complete to the best of my knowledge and belief. I further certify that the drilling pit will be constructed according to NMOCD guidelines <input checked="" type="checkbox"/> a general permit <input type="checkbox"/> , or an (attached) alternative OCD approved plan <input type="checkbox"/>		OIL CONSERVATION DIVISION	
Signature: Sarah Jordan		Approved by: Jim W. Green	
Printed name: Sarah Jordan		Title: District II Supervisor	
Title: Production Analyst		Approval Date: 5/19/08	
E-mail Address: sjordan@nearburg.com		Expiration Date: 5/29/10	
Date: 5-20-08	Phone: 432/686-8235	Conditions of Approval:	
		Attached <input type="checkbox"/>	

# State of New Mexico

## DISTRICT I

1625 N. FRENCH DR., HOBBS, NM 88240

Energy, Minerals and Natural Resources Department

## DISTRICT II

1301 W. GRAND AVENUE, ARTESIA, NM 88210

## DISTRICT III

1000 Rio Brazos Rd., Aztec, NM 87410

## DISTRICT IV

1220 S. ST. FRANCIS DR., SANTA FE, NM 87505

## OIL CONSERVATION DIVISION

1220 SOUTH ST. FRANCIS DR.  
Santa Fe, New Mexico 87505

Form C-102

Revised October 12, 2005

Submit to Appropriate District Office

State Lease - 4 Copies

Fee Lease - 3 Copies

## WELL LOCATION AND ACREAGE DEDICATION PLAT

☐ AMENDED REPORT

API Number	Pool Code 55670	Pool Name Nearburg-Glorietta-Veo
Property Code	Property Code BOYD	Well Number 1
OGRID No. 015740	Operator Name NEARBURG PRODUCING COMPANY	Elevation 3466'

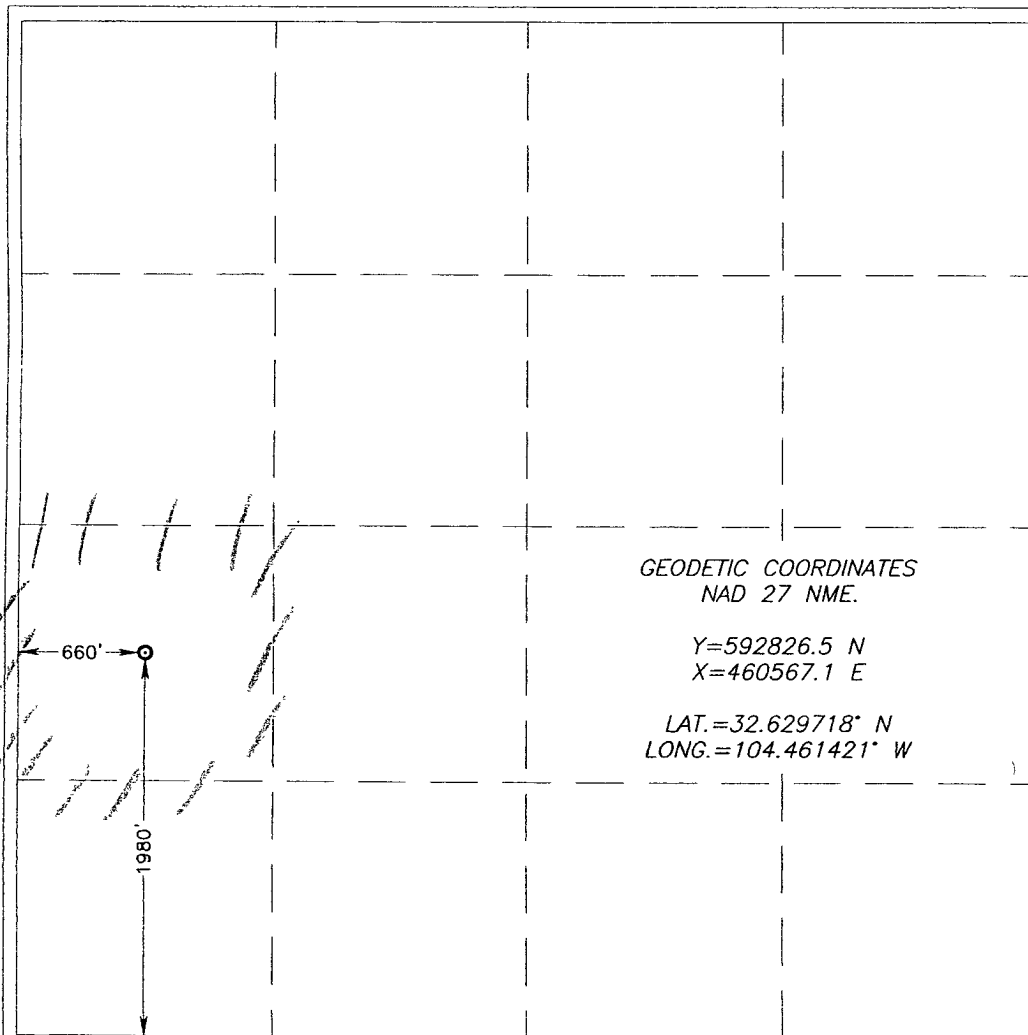
### Surface Location

UL or lot No.	Section	Township	Range	Lot Idn	Feet from the	North/South line	Feet from the	East/West line	County
L	26	19-S	25-E		1980	SOUTH	660	WEST	EDDY

### Bottom Hole Location If Different From Surface

UL or lot No.	Section	Township	Range	Lot Idn	Feet from the	North/South line	Feet from the	East/West line	County
Dedicated Acres 40	Joint or Infill	Consolidation Code	Order No.						

NO ALLOWABLE WILL BE ASSIGNED TO THIS COMPLETION UNTIL ALL INTERESTS HAVE BEEN CONSOLIDATED  
OR A NON-STANDARD UNIT HAS BEEN APPROVED BY THE DIVISION



GEODETIC COORDINATES  
NAD 27 NME.

Y=592826.5 N  
X=460567.1 E

LAT.=32.629718° N  
LONG.=104.461421° W

### OPERATOR CERTIFICATION

I hereby certify that the information herein is true and complete to the best of my knowledge and belief, and that this organization either owns a working interest or unleased mineral interest in the land including the proposed bottom hole location or has a right to drill this well at this location pursuant to a contract with an owner of such mineral or working interest, or to a voluntary pooling agreement or a compulsory pooling order heretofore entered by the division.

Signature: *[Signature]* Date: *[Date]*  
Printed Name: *[Name]*

### SURVEYOR CERTIFICATION

I hereby certify that the well location shown on this plat was plotted from field notes of actual surveys made by me or under my supervision, and that the same is true and correct to the best of my belief.

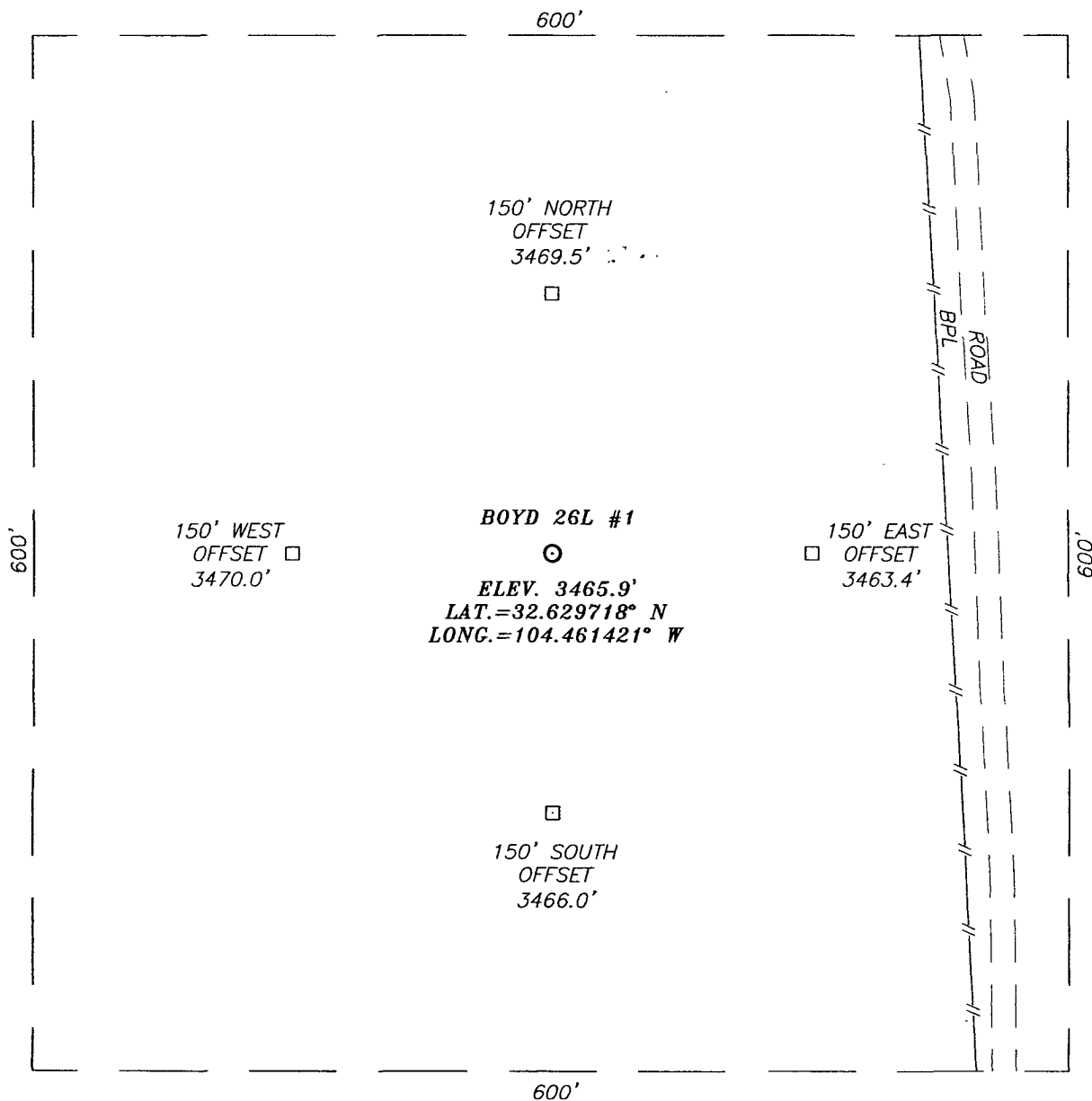
FEBRUARY 18 2008

Date Surveyed: *[Date]* DSS  
Signature & Seal of Professional Surveyor

*[Signature]*  
3239  
08-11-01863

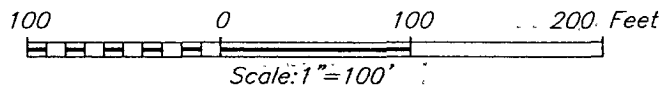
Certificate No. GARY G. EIDSON 12641  
RONALD J. EIDSON 3239

**SECTION 26, TOWNSHIP 19 SOUTH, RANGE 25 EAST, N.M.P.M.,**  
 EDDY COUNTY, NEW MEXICO



**DIRECTIONS TO LOCATION**

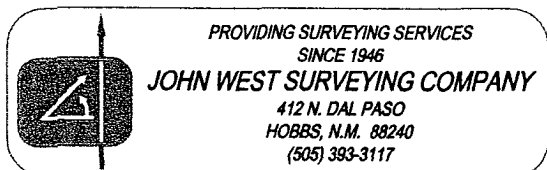
FROM THE INTERSECTION OF HIGHWAY 285 AND COUNTY ROAD 23 (ROCK DAISY ROAD), GO WEST ON COUNTY ROAD 23 APPROX. 2.9 MILES. TURN RIGHT AND GO NORTH ON CALICHE ROAD APPROX. 0.4 MILES. THIS LOCATION IS APPROX. 255 FEET WEST.



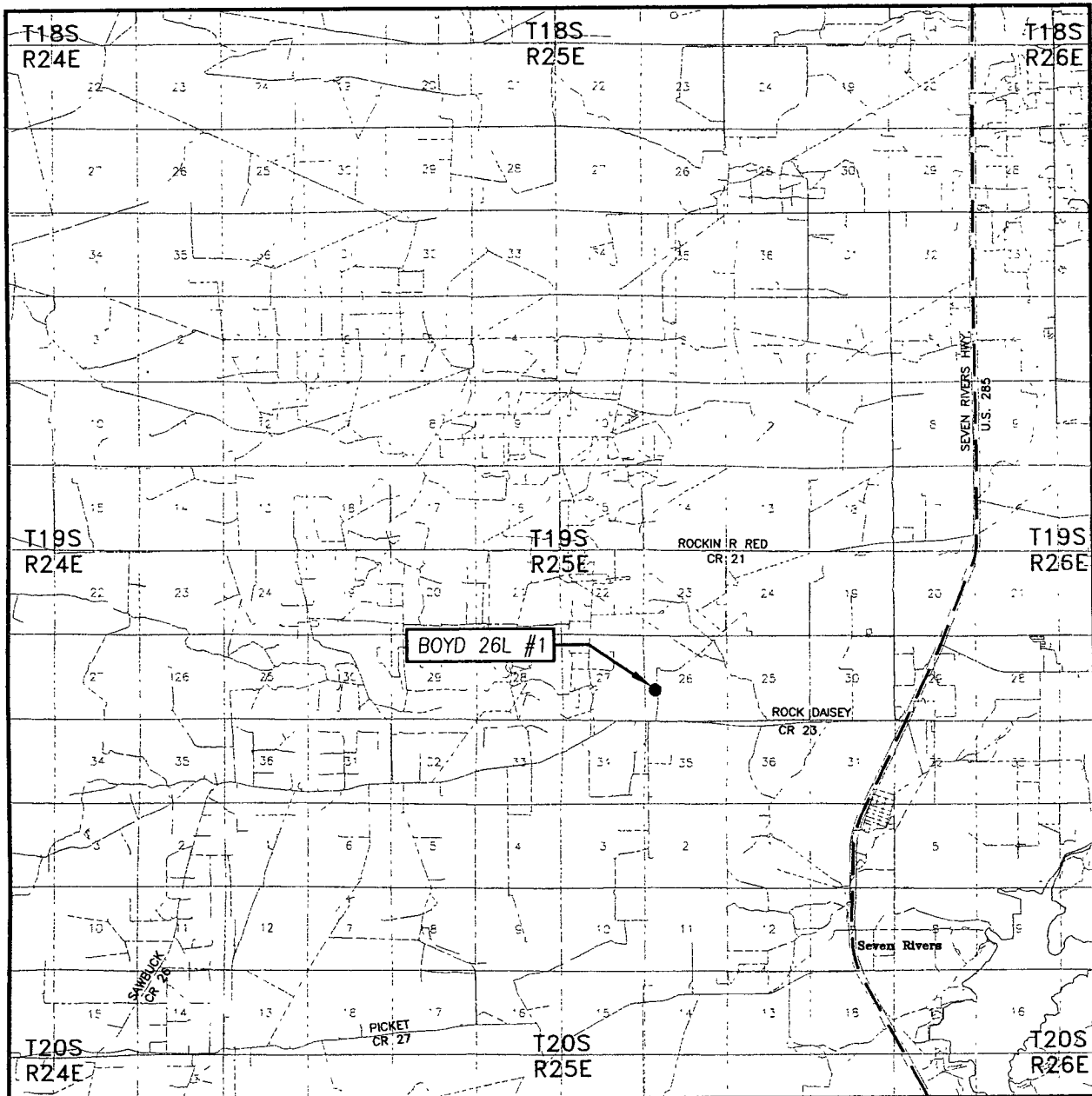
**NEARBURG PRODUCING COMPANY**

BOYD 26L #1 WELL  
 LOCATED 1980 FEET FROM THE SOUTH LINE  
 AND 660 FEET FROM THE WEST LINE OF SECTION 26,  
 TOWNSHIP 19 SOUTH, RANGE 25 EAST, N.M.P.M.,  
 EDDY COUNTY, NEW MEXICO.

Survey Date: 2/18/08	Sheet 1 of 1 Sheets
W.O. Number: 08.11.0186	Dr By: DSS
Date: 2/22/08	08110186
	Scale: 1"=100'



# VICINITY MAP



SCALE: 1" = 2 MILES

SEC. 26 TWP. 19-S RGE. 25-E

SURVEY N.M.P.M.

COUNTY EDDY STATE NEW MEXICO

DESCRIPTION 1980' FSL & 660' FWL

ELEVATION 3466'

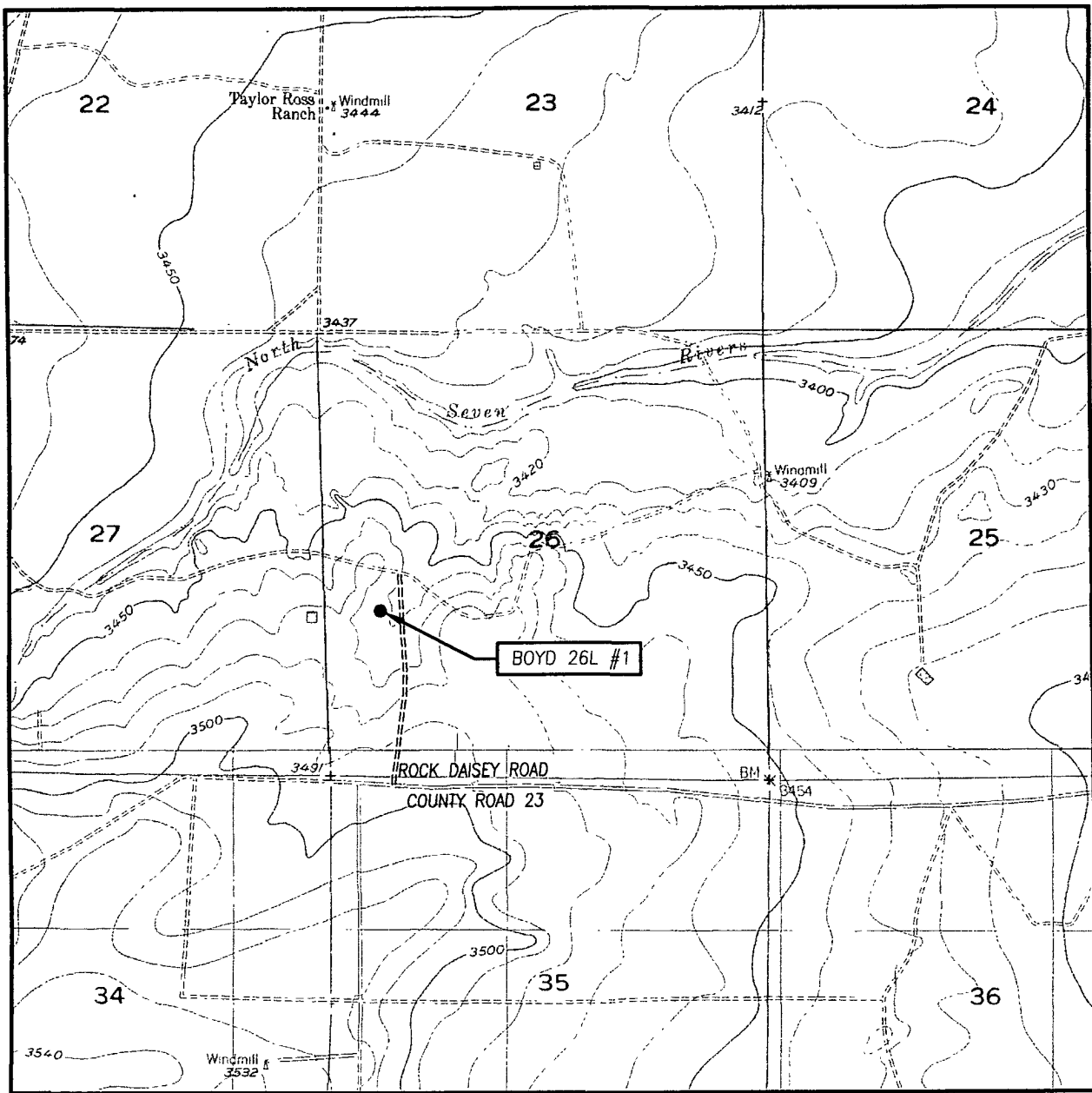
NEARBURG  
OPERATOR PRODUCING COMPANY

LEASE BOYD 26L



PROVIDING SURVEYING SERVICES  
SINCE 1946  
**JOHN WEST SURVEYING COMPANY**  
412 N. DAL PASO  
HOBBS, N.M. 88240  
(505) 393-3117

# LOCATION VERIFICATION MAP



SCALE: 1" = 2000'

CONTOUR INTERVAL: 10'  
DAYTON, NM  
SEVEN RIVERS, NM

SEC. 26 TWP. 19-S RGE. 25-E

SURVEY N.M.P.M.

COUNTY EDDY STATE NEW MEXICO

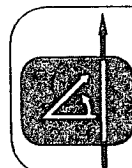
DESCRIPTION 1980' FSL & 660' FWL

ELEVATION 3466'

OPERATOR NEARBURG PRODUCING COMPANY

LEASE BOYD 26L

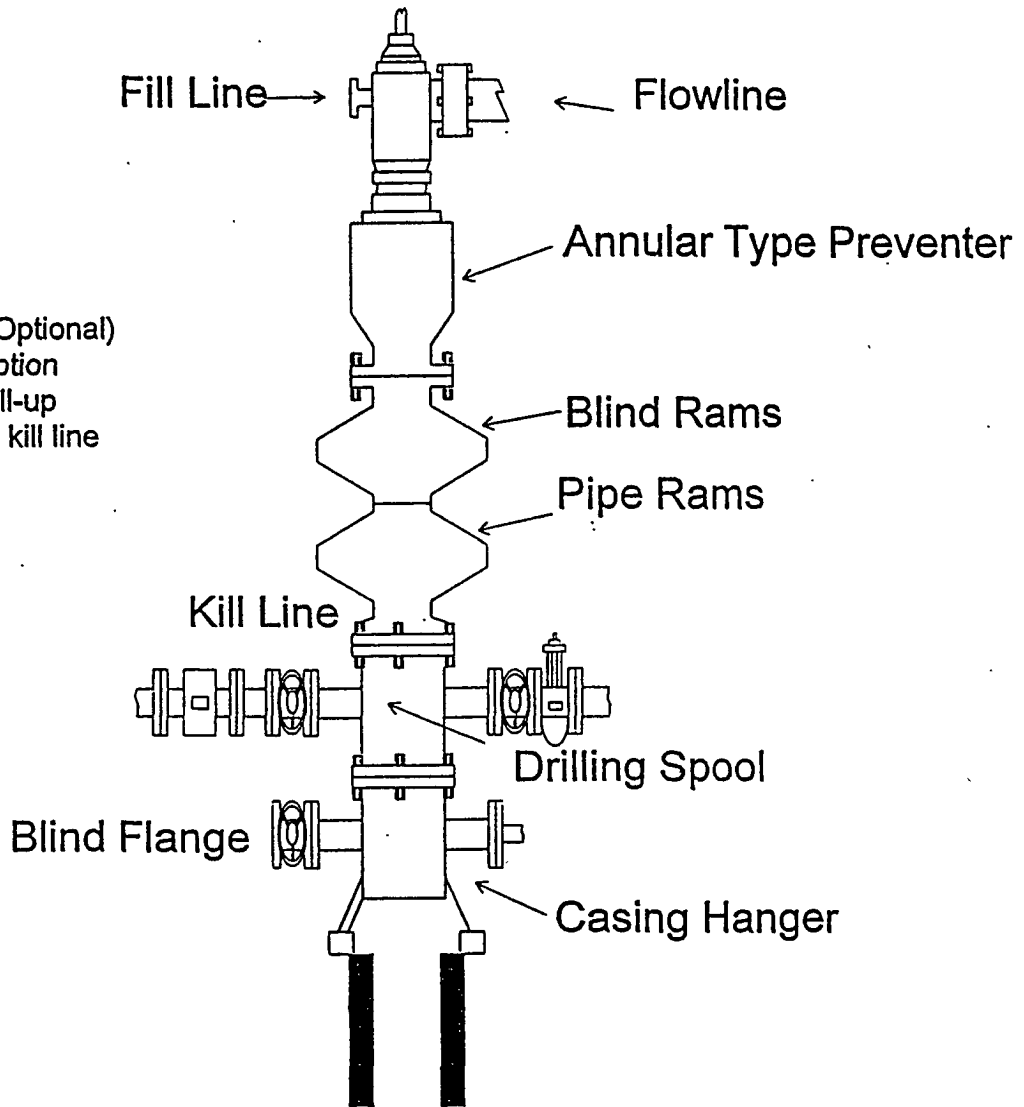
U.S.G.S. TOPOGRAPHIC MAP  
DAYTON, NM



PROVIDING SURVEYING SERVICES  
SINCE 1946  
**JOHN WEST SURVEYING COMPANY**  
412 N. DAL PASO  
HOBBS, N.M. 88240  
(505) 393-3117

NEARBURG PRODUCING COMPANY  
BOPE SCHEMATIC

Rotating Head (Optional)  
Drilling Nipple option  
must include a fill-up  
line. Do not use kill line  
for fill up.



900 Series

NEARBURG PRODUCING COMPANY  
CHOKE MANIFOLD  
2M AND 3M SERVICE

