

District I
1625 N French Dr., Hobbs, NM 88240
District II
1301 W. Grand Avenue, Artesia, NM 88210
District III
1000 Rio Brazos Road, Aztec, NM 87410
District IV
1220 S. St. Francis Dr., Santa Fe, NM 87505

State of New Mexico
Energy Minerals and Natural Resources

Form C-101
May 27, 2004

Oil Conservation Division
1220 South St. Francis Dr.
Santa Fe, NM 87505

Submit to appropriate District Office

MAY 23 2008

☐ AMENDED REPORT

OCD-ARTESIA

APPLICATION FOR PERMIT TO DRILL, RE-ENTER, DEEPEN, PLUGBACK, OR ADD A ZONE

Operator Name and Address RKI EXPLORATION & PRODUCTION, LLC. 3817 NW EXPRESSWAY SUITE 950 OKLAHOMA CITY, OKLAHOMA 73112		OGRID Number 246289
Property Code 36900	Property Name RDX "16"	API Number 30-015-36283 Well No. # 2
Proposed Pool 1 WILDCAT-BONE SPRING		Proposed Pool 2

Surface Location

UL or lot no.	Section	Township	Range	Lot Idn	Feet from the	North/South line	Feet from the	East/West line	County
K	16	26S	30E		2190'	SOUTH	1875'	WEST	EDDY

Proposed Bottom Hole Location If Different From Surface

UL or lot no.	Section	Township	Range	Lot Idn	Feet from the	North/South line	Feet from the	East/West line	County

Additional Well Information

Work Type Code N	Well Type Code O	Cable/Rotary ROTARY	Lease Type Code S	Ground Level Elevation 3047'
Multiple NO	Proposed Depth 8350'	Formation BONE SPRING	Contractor PERMIAN DRILLING	Spud Date WHEN APPROVED
Depth to Groundwater 150+		Distance from nearest fresh water well 1.5 Mi NW		Distance from nearest surface water Red-Bluff Lake 7 Mi southwest
Pit: Linc. Synthetic <input type="checkbox"/> _____ mils thick Clay <input type="checkbox"/> Pit Volume: _____ bbls Drilling Method: Closed-Loop System <input checked="" type="checkbox"/> Fresh Water <input checked="" type="checkbox"/> Brine <input checked="" type="checkbox"/> Diesel/Oil-based <input type="checkbox"/> Gas/Air <input type="checkbox"/>				

Proposed Casing and Cement Program

Hole Size	Casing Size	Casing weight/foot	Setting Depth	Sacks of Cement	Estimated TOC
26"	20"	Conductor	40'	Redi-mix	Surface
17 1/2"	13 3/8"	54.5#	450'	401 Sx.	Surface
11"	8 5/8"	32#	3301'	889 Sx	Surface
7 7/8"	5 1/2"	17#	8350'	459 Sx	Est 2075' FS

Describe the proposed program. If this application is to DEEPEN or PLUG BACK, give the data on the present productive zone and proposed new productive zone. Describe the blowout prevention program, if any. Use additional sheets if necessary.

NOTE: NEW PIT RULE 19.15.17
NMAC.

SEE ATTACHED SHEET

For use of closed loop system-
complete new form C-144.

NOTE: New Pit Rule
NMAC 19-15-17

I hereby certify that the information given above is true and complete to the best of my knowledge and belief. I further certify that the drilling pit will be constructed according to NMOCD guidelines <input checked="" type="checkbox"/> a general permit <input type="checkbox"/> , or an (attached) alternative OCD-approved plan <input type="checkbox"/> .		OIL CONSERVATION DIVISION	
Printed name: Joe T. Janica		Approved by: <i>Tom W. Greene</i> District II Supervisor	
Title: Permit Engineer		Approval Date: 6/19/08 Expiration Date: 6/19/10	
E-mail address: jeejanica@valornet.com		Conditions of Approval Attached <input type="checkbox"/>	
Date: 6/5/2008	Phone: 575-391-8503		

1. Drill 26" hole to 40'. Set 40' of 20" conductor pipe and cement to surface with Redi-mix.
2. Drill 17½" hole to 450'. Run and set 450' of 13 3/8" 54.5# J-55 ST&C casing. cement with 201 Sx. of 35/65 Class "C" POZ + 6% Bentonite, + 5# Gilsonite/Sx. + .125# Celoflake/Sx + 3% CaCl, Yield 1.95. tail in with 200 Sx. of Class "C" cement + 2% CaCl, + .125# Celoflakes/Sx. Yield 1.34, circulate cement to surface.
3. Drill 11" hole to 3301'. Run and set 3301' of 8 5/8" 32# J-55 ST&C casing. Cement with 689 Sx. 35/65 POZ Class "C" POZ + 5% Salt, + 6% Bentonite, + 4#/Sx of Gilsonite, + .125#/Sx. of polyflakes. Yield 2.04 Tail in with 200 Sx. of Class "C" cement + 1% CaCl, + .125#/Sx. of polyflakes. Yield 1.33, circulate cement.
4. Drill 7 7/8" hole to 8350'. Run and set 8350' of 5½" 17# J-55 LT&C casing. Cement with 259 Sx. of 40/60 (CemPlus blend/LITEFIL(243/CF), + .3% TIC DISPERSANT, + 1% Antisettling agent, + .4% Midtemp Retarder, + .125#/Sx polyflakes, + .2% antifoamer. Yield 2.32. Tail in with 200 Sx. of 40/60 (ChemPlus Blend/LITEFIL(24#/CF) + .3% Tic Dispersant, + 1% Anti Settling Agent, + .2% Antifoamer, + .4% Midtemp Retarder, + .125#/Sx. of polyflakes. Yield 2.00. Estimate TOC 2075' from surface.

DISTRICT I
1625 N. French Dr., Hobbs, NM 88240
DISTRICT II
1301 W. Grand Avenue, Artesia, NM 88210

DISTRICT III
1000 Rio Brazos Rd., Aztec, NM 87410

DISTRICT IV
1220 S. St. Francis Dr., Santa Fe, NM 87505

State of New Mexico
Energy, Minerals and Natural Resources Department

Form C-102
Revised October 12, 2005

Submit to Appropriate District Office

State Lease - 4 Copies
Fee Lease - 3 Copies

OIL CONSERVATION DIVISION
1220 South St. Francis Dr.
Santa Fe, New Mexico 87505

☐ AMENDED REPORT

WELL LOCATION AND ACREAGE DEDICATION PLAT

API Number	Pool Code 96403	Pool Name WILDCAT-BONESPRING
Property Code 36900	Property Name RDX "16"	Well Number 2
OGRID No. 246289	Operator Name RKI EXPLORATION & PRODUCTION	Elevation 3047'

Surface Location

UL or lot No.	Section	Township	Range	Lot Idn	Feet from the	North/South line	Feet from the	East/West line	County
K	16	26 S	30 E		2190	SOUTH	1875	WEST	EDDY

Bottom Hole Location If Different From Surface

UL or lot No.	Section	Township	Range	Lot Idn	Feet from the	North/South line	Feet from the	East/West line	County
Dedicated Acres 40	Joint or Infill	Consolidation Code	Order No.						

NO ALLOWABLE WILL BE ASSIGNED TO THIS COMPLETION UNTIL ALL INTERESTS HAVE BEEN CONSOLIDATED
OR A NON-STANDARD UNIT HAS BEEN APPROVED BY THE DIVISION

	<p>OPERATOR CERTIFICATION</p> <p>I hereby certify that the information contained herein is true and complete to the best of my knowledge and belief, and that this organization either owns a working interest or unleased mineral interest in the land including the proposed bottom hole location pursuant to a contract with an owner of such a mineral or working interest, or to a voluntary pooling agreement or a compulsory pooling order heretofore entered by the division.</p> <p>Signature: <i>Joe T. Janica</i> Date: 05/22/08</p> <p>Printed Name: Joe T. Janica</p> <p>SURVEYOR CERTIFICATION</p> <p>I hereby certify that the well location shown on this plat was plotted from field notes of actual surveys made by me or under my supervision, and that the same is true and correct to the best of my belief.</p> <p>GARY L. JONES MAY 2008 NEW MEXICO Date Surveyed: 05/22/08 Signature & Seal of Professional Surveyor: <i>Gary L. Jones</i> W.O. No. 19712 Certificate No. Gary L. Jones 7977</p> <p>BASIN SURVEYS</p>
--	---

SECTION 16, TOWNSHIP 26 SOUTH, RANGE 30 EAST, N.M.P.M.,
EDDY COUNTY, NEW MEXICO.

150' NORTH
OFF SET
3046.6'
□

RKI EXPLORATION & PRODUCTION

RDX "16" #2
ELEV. - 3047'

150' WEST
OFF SET □
3045.9'

150' EAST
OFF SET □
3049.0'

LAT-N 32°02'28.64"
LONG-W 103°53'19.88"
(NAD-83)

□
150' SOUTH
OFF SET
3045.7'

PROPOSED LEASE ROAD 1278.0'

RDX 16 #1

DIRECTIONS TO LOCATION:

FROM THE JUNCTION OF HWY 285 AND WHITETHORN,
GO EAST AND FOLLOW EPNG PIPELINE FOR 10.4
MILES, TURN SOUTH FOR 1.9 MILES, THENCE TURN
EAST FOR 0.6 MILES TO LOCATION AND PROPOSED
LEASE ROAD.

200 0 200 400 FEET

SCALE: 1" = 200'

RKI EXPLORATION & PRODUCTION

REF: RDX "16" #2 / Well Pad Topo

THE RDX "16" #2 LOCATED 2190' FROM
THE SOUTH LINE AND 1875' FROM THE WEST LINE OF
SECTION 16, TOWNSHIP 26 SOUTH, RANGE 30 EAST,
N.M.P.M., EDDY COUNTY, NEW MEXICO.

BASIN SURVEYS P.O. BOX 1786-HOBBS, NEW MEXICO

W.O. Number: 19712

Drawn By: J. M. SMALL

Date: 05-08-2008

Disk: JMS 19712

Survey Date: 05-07-2008

Sheet 1 of 1 Sheets

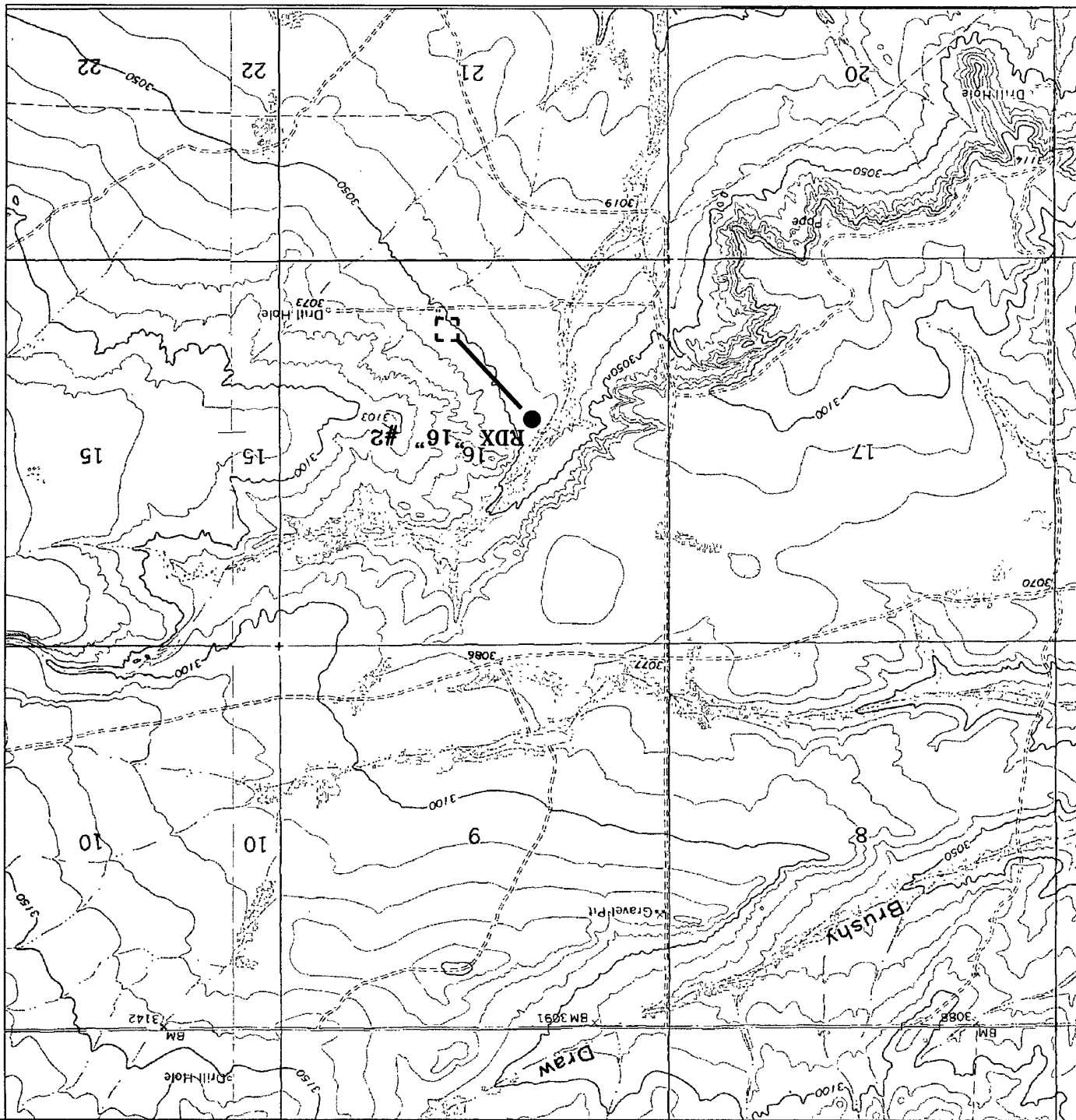
RKI EXPLORATION & PRODUCTION

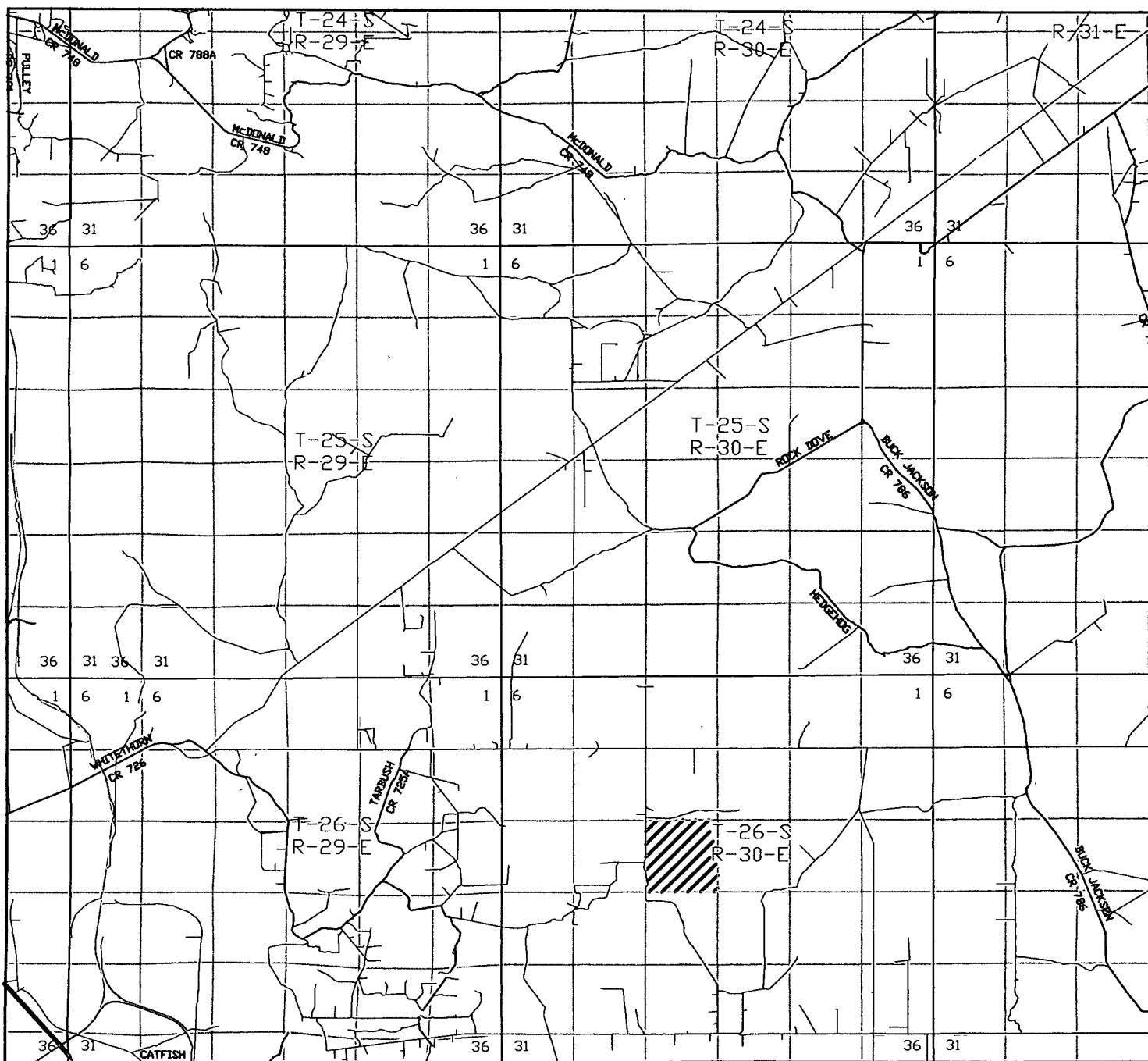
W.O. Number: 19712
Survey Date: 05-07-2008
Scale: 1" = 2000'
Date: 05-08-2008

P.O. Box 1786
1120 N. West County Rd.
Hobbs, New Mexico 88241
(505) 393-7316 - Office
(505) 392-3074 - Fax
basinsurveys.com

Basin
SURVEYS
focused on excellence
in the oilfield

RDX "16" #2
Located at 2190' FSL AND 1875' FWL
Section 16, Township 26 South, Range 30 East,
N.M.P.M., Eddy County, New Mexico.





RDX "16" #2

Located at 2190' FSL and 1875' FWL

Section 16, Township 26 South, Range 30 East,
N.M.P.M., Eddy County, New Mexico.

basin
surveys

focused on excellence
in the oilfield

P.O. Box 1786
1120 N. West County Rd.
Hobbs, New Mexico 88241
(505) 393-7316 - Office
(505) 392-3074 - Fax
basinsurveys.com

W.O. Number: JMS 19712

Survey Date: 05-07-2008

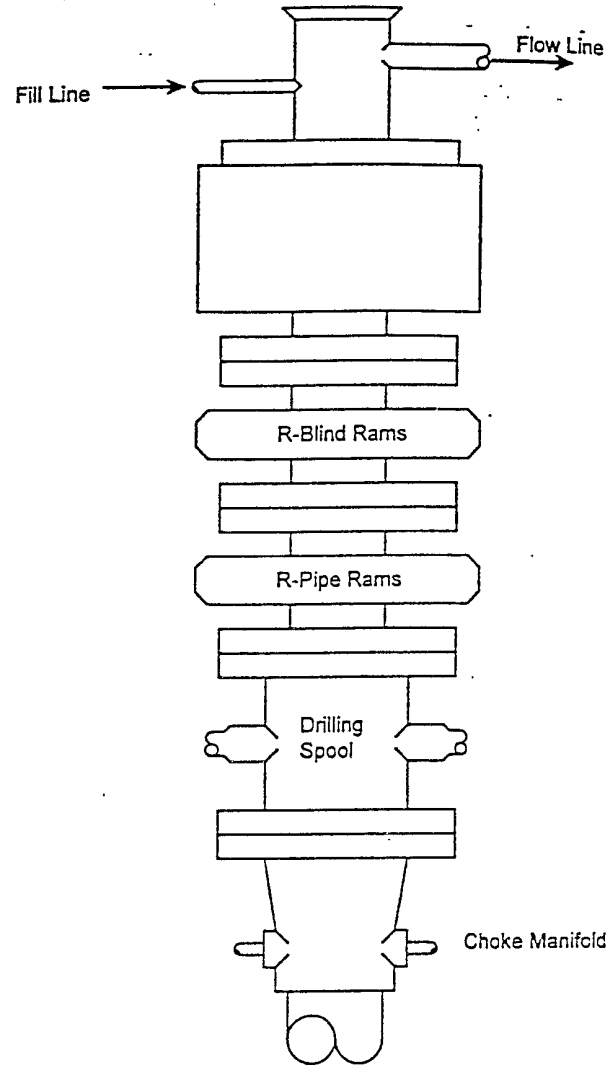
Scale: 1" = 2 MILES

Date: 05-08-2008

RKI
**EXPLORATION &
PRODUCTION**

BLOWOUT PREVENTER SYSTEM

3000 PSI



Type 900 SERIES
3000 PSI WP

Choke Manifold Assembly for 5M WP System

