

ATS-08-741

JUL 16 2008
OCD-ARTESIA

OCD-ARTESIA

Form 3160-3
(April 2004)UNITED STATES
DEPARTMENT OF THE INTERIOR
BUREAU OF LAND MANAGEMENTFORM APPROVED
OMB No 1004-0137
Expires March 31, 2007

970

APPLICATION FOR PERMIT TO DRILL OR REENTER

1a. Type of Work: <input checked="" type="checkbox"/> DRILL <input type="checkbox"/> REENTER		5. Lease Serial No. NM-12128	
1b. Type of Well <input type="checkbox"/> Oil Well <input checked="" type="checkbox"/> Gas Well <input type="checkbox"/> Other <input checked="" type="checkbox"/> Single Zone <input type="checkbox"/> Multiple Zone		6. If Indian, Allottee or Tribe Name	
2. Name of Operator Cimarex Energy Co. of Colorado		7. If Unit or CA Agreement, Name and No. Pending	
3a. Address PO Box 140907 Irving, TX 75014		8. Lease Name and Well No. Juno 27 Federal Com No. 3	
3b. Phone No. (include area code) 972-401-3111		9. API Well No. 30-015- 36424	
4. Location of Well (Report location clearly and in accordance with any State requirements. *) At Surface 660' FSL & 660' FWL At proposed prod. Zone		10. Field and Pool, or Exploratory Henshaw; Morrow, Southwest (Gas)	
14. Distance in miles and direction from nearest town or post office* 2 miles Northeast of Loco Hills		11. Sec., T. R. M. or Blk and Survey or Area 27-16S-29E	
15. Distance from proposed* location to nearest property or lease line, ft. (Also to nearest drig. unit line if any) 660'		12. County or Parish Eddy	
16. No of acres in lease 720		13. State NM	
17. Spacing Unit dedicated to this well W2 320			
18. Distance from proposed location* to nearest well, drilling, completed, applied for, on this lease, ft. 2640'		19. Proposed Depth 10,800'	
20. BLM/BIA Bond No. on File NM-2575			
21. Elevations (Show whether DF, KDB, RT, GL, etc.) 3,650' GR		22. Approximate date work will start* 6/15/2008	
23. Estimated duration 35-45 days			

24. Attachments

The following, completed in accordance with the requirements of Onshore Oil and Gas Order No 1, shall be attached to this form.

- | | |
|--|--|
| 1. Well plat certified by a registered surveyor | 4. Bond to cover the operations unless covered by an existing bond on file (see Item 20 above). |
| 2. A Drilling Plan | 5. Operator Certification |
| 3. A Surface Use Plan (if the location is on National Forest System Lands, the SUPO shall be filed with the appropriate Forest Service Office) | 6. Such other site specific information and/or plans as may be required by the authorized officer. |

25. Signature <i>Natalie Krueger</i>	Name (Printed/Typed) Natalie Krueger	Date 05.30.08
Title Regulatory Analyst		
Approved By (Signature) <i>/s/ Don Peterson</i>	Name (Printed/Typed) <i>/s/ Don Peterson</i>	Date
Title <i>m</i> FIELD MANAGER	Office CARLSBAD FIELD OFFICE	

Application approval does not warrant or certify that the applicant holds legal or equitable title to those rights in the subject lease which would entitle the applicant to conduct operations thereon.

Conditions of approval, if any, are attached.

Title 18 U.S.S. Section 1001 and Title 43 U.S.C. Section 1212, make it a crime for any person knowingly and willfully to make to any department or agency of the United States any false, fictitious, or fraudulent statements or representations as to any matter within its jurisdiction.

* (Instructions on page 2)

APPROVAL FOR TWO YEARS

SEE ATTACHED FOR
CONDITIONS OF APPROVALApproval Subject to General Requirements
& Special Stipulations Attached

Roswell Controlled Water Basin

DISTRICT I
1625 N. French Dr., Hobbs, NM 88240

DISTRICT II
1301 W. Grand Avenue, Artesia, NM 88210

DISTRICT III
1000 Rio Brazos Rd., Aztec, NM 87410

DISTRICT IV
1220 S. St. Francis Dr., Santa Fe, NM 87505

State of New Mexico
Energy, Minerals and Natural Resources Department

Form C-102
Revised October 12, 2005

Submit to Appropriate District Office
State Lease - 4 Copies
Fee Lease - 3 Copies

OIL CONSERVATION DIVISION
1220 South St. Francis Dr.
Santa Fe, New Mexico 87505

☐ AMENDED REPORT

WELL LOCATION AND ACREAGE DEDICATION PLAT

API Number 30-015-36424	Pool Code 97149	Pool Name Henshaw; Morrow, Southwest (Gas)
Property Code 37001	Property Name JUNO "27" FEDERAL COM	Well Number 31
OGRID No. 162683	Operator Name CIMAREX ENERGY CO. OF COLORADO	Elevation 3650'

Surface Location

UL or lot No.	Section	Township	Range	Lot Idn	Feet from the	North/South line	Feet from the	East/West line	County
M	27	16 S	29 E		660	SOUTH	660	WEST	EDDY

Bottom Hole Location If Different From Surface

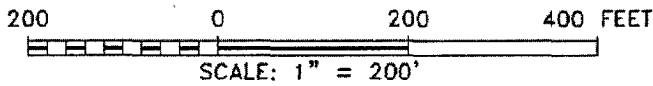
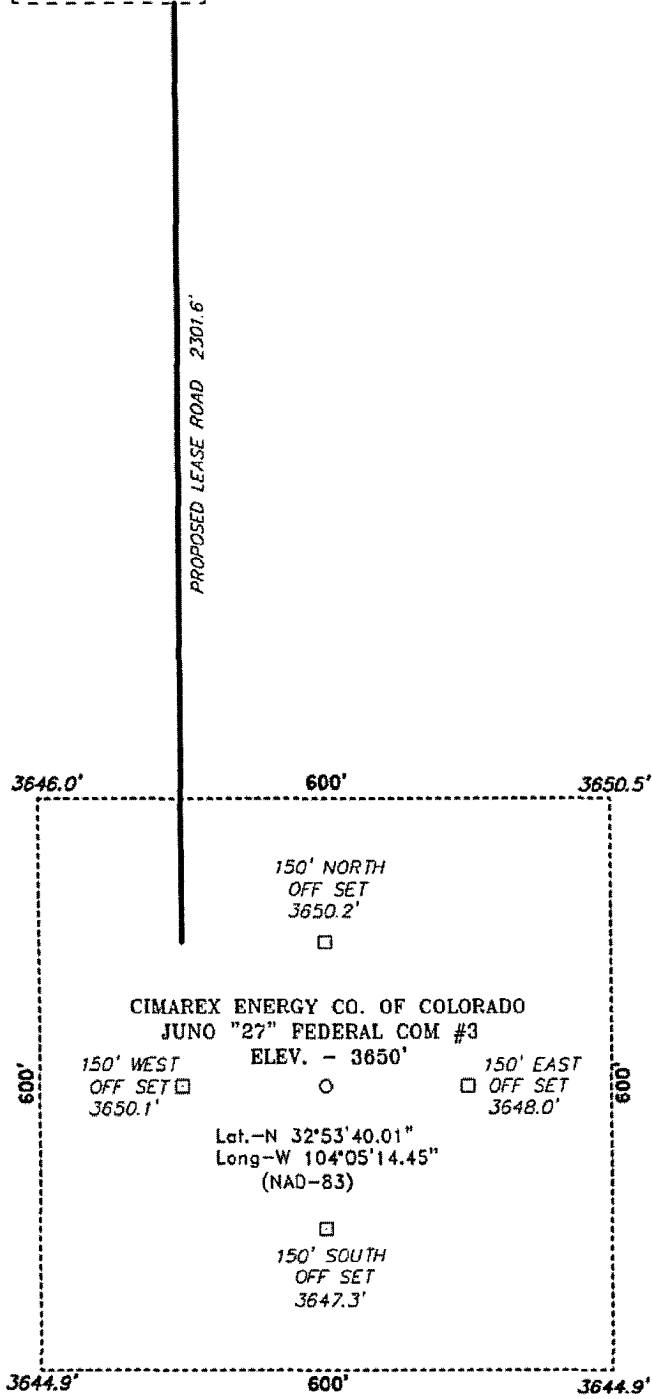
UL or lot No.	Section	Township	Range	Lot Idn	Feet from the	North/South line	Feet from the	East/West line	County
Dedicated Acres 320		Joint or Infill		Consolidation Code P		Order No.			

NO ALLOWABLE WILL BE ASSIGNED TO THIS COMPLETION UNTIL ALL INTERESTS HAVE BEEN CONSOLIDATED
OR A NON-STANDARD UNIT HAS BEEN APPROVED BY THE DIVISION

<p>NM-97874</p> <p>1980'</p> <p>660'</p> <p>Juno 27 Fed Com #2</p> <p>NM-12128</p> <p><u>SURFACE LOCATION</u> Lat - N32°53'13.90" Long - W104°04'08.74" NAD83 - N 686602.986 E 622450.365 (NAD-83)</p> <p>3646.0' - 3650.5'</p> <p>660'</p> <p>Juno 27 Fed Com #3</p> <p>3644.9' - 3644.9'</p>	<p>OPERATOR CERTIFICATION</p> <p>I hereby certify that the information contained herein is true and complete to the best of my knowledge and belief, and that this organization either owns a working interest or unleased mineral interest in the land including the proposed bottom hole location pursuant to a contract with an owner of such a mineral or working interest, or to a voluntary pooling agreement or a compulsory pooling order heretofore entered by the division.</p> <p><i>Natalie Krueger</i> 05-30-08 Signature Date</p> <p>Natalie Krueger Printed Name</p>
	<p>SURVEYOR CERTIFICATION</p> <p>I hereby certify that the well location shown on this plat was plotted from field notes of actual surveys made by me or under my supervision, and that the same is true and correct to the best of my belief.</p> <p>MARCH 27, 2008</p> <p>Date Surveyed</p> <p>Signature of Surveyor Professional Surveyor</p> <p>Certificate No. Gary L. Jones 7977</p> <p>BASIN SURVEYS</p>

SECTION 27, TOWNSHIP 16 SOUTH, RANGE 29 EAST, N.M.P.M.,
EDDY COUNTY, NEW MEXICO.

JUNO WELL



Directions to Location:

FROM THE JUNCTION OF HWY 82 AND BARNIVAL
DRAW ROAD, GO NORTH TO LEASE ROAD FOR JUNO
WELLS AND PROPOSED LEASE ROAD.

BASIN SURVEYS P.O. BOX 1786 - HOBBS, NEW MEXICO

W.O. Number: 19381 Drawn By: J. SMALL

Date: 03-28-2008 Disk: JMS 19381W

CIMAREX ENERGY CO. OF COLORADO

REF: JUNO "27" FEDERAL COM #3. / WELL PAD TOPO

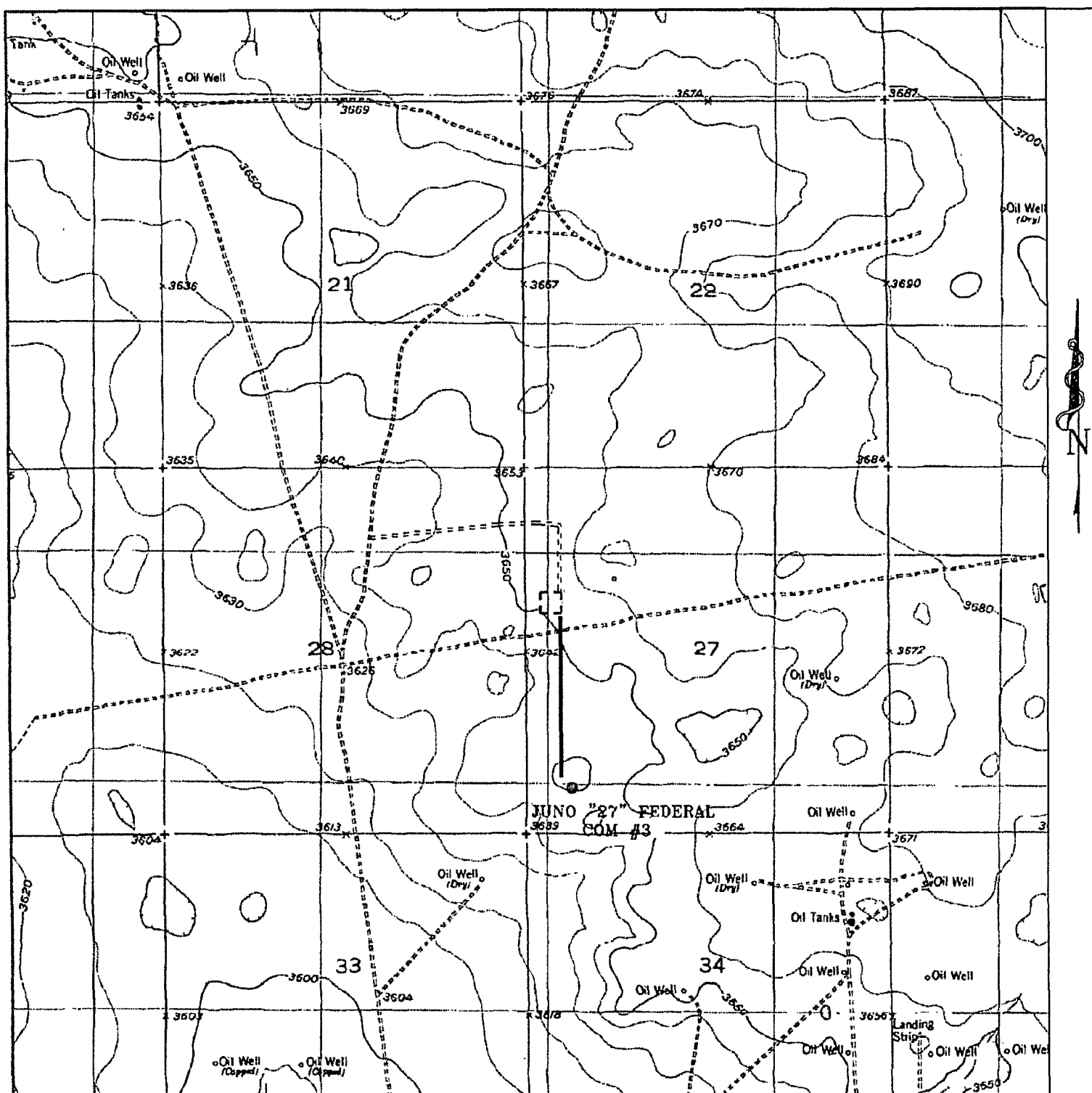
THE JUNO "27" FEDERAL COM #3 LOCATED 660'

FROM THE SOUTH LINE AND 660' FROM THE WEST LINE OF

SECTION 27, TOWNSHIP 16 SOUTH, RANGE 29 EAST,

N.M.P.M., EDDY COUNTY, NEW MEXICO.

Survey Date: 03-27-2008 Sheet 1 of 1 Sheets



JUNO "27" FEDERAL COM #3

Located 660' FSL and 660' FWL

Section 27, Township 16 South, Range 29 East,
N.M.P.M., Eddy County, New Mexico.

**basin
surveys**

focused on excellence
in the oilfield

P.O. Box 1786
1120 N. West County Rd.
Hobbs, New Mexico 88241
(505) 393-7316 - Office
(505) 392-3074 - Fax
basinsurveys.com

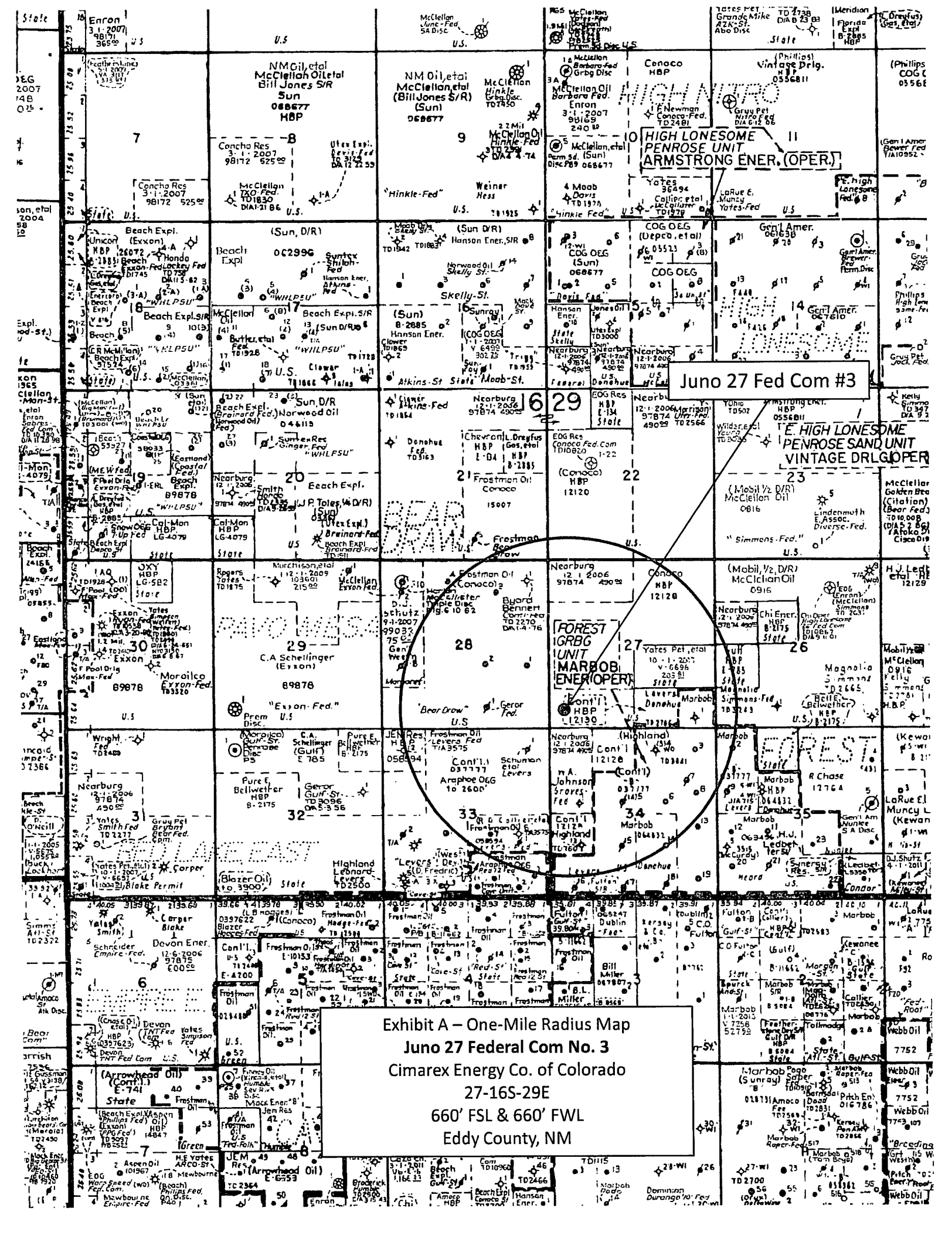
W.O. Number: JMS 19381T

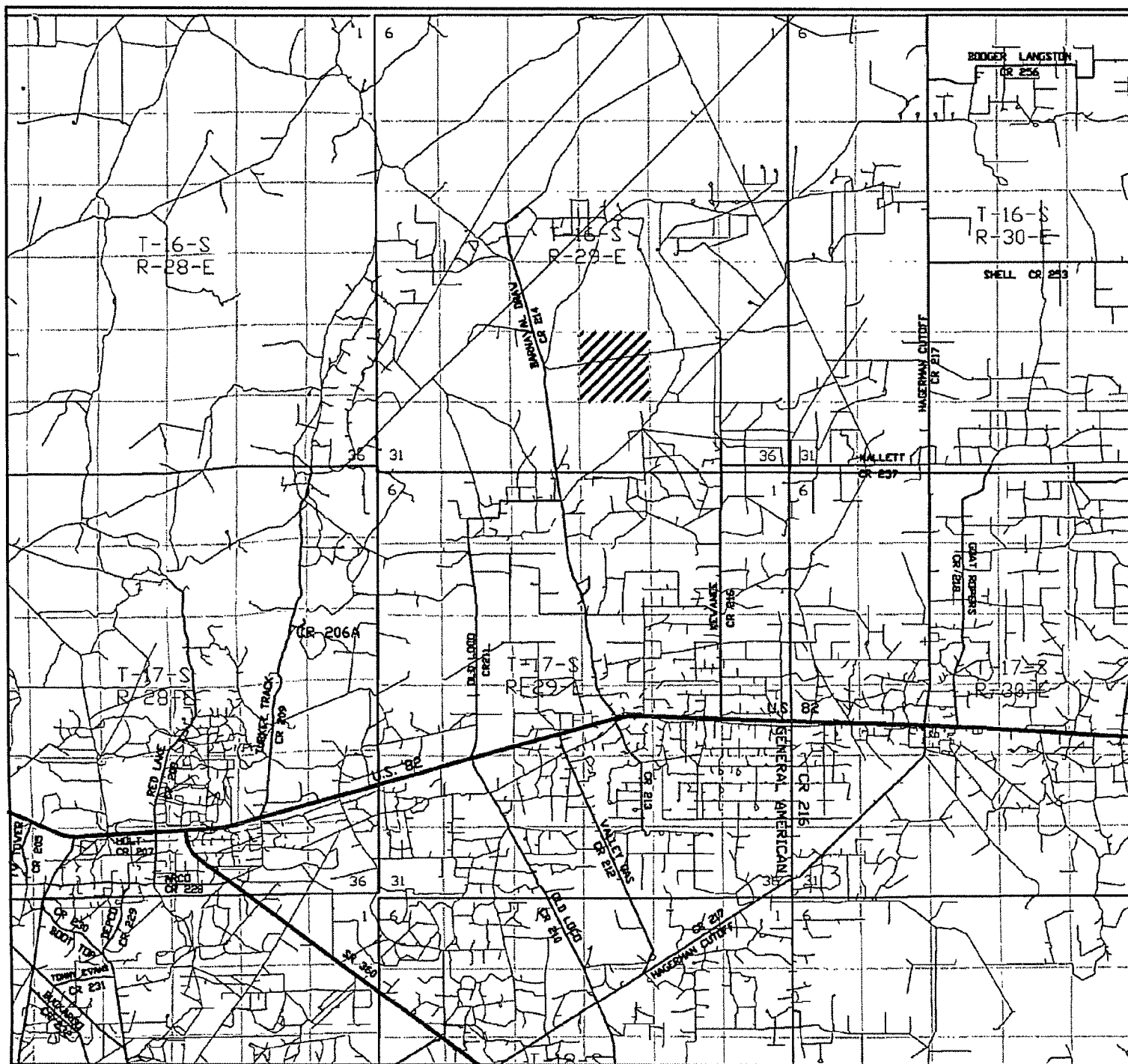
Survey Date: 03-27-2008

Scale: 1" = 2000'

Date: 03-28-2008

**CIMAREX
ENERGY CO.
OF COLORADO**





JUNO "27" FEDERAL COM #3
 Located 660' FSL and 660' FWL
 Section 27, Township 16 South, Range 29 East,
 N.M.P.M., Eddy County, New Mexico.

basin
surveys
 focused on excellence
 in the oilfield

P.O. Box 1786
 1120 N. West County Rd.
 Hobbs, New Mexico 88241
 (505) 393-7316 - Office
 (505) 392-3074 - Fax
 basinsurveys.com

W.O. Number: JMS 19381TR

Survey Date: 03-27-2008

Scale: 1" = 2 MILES

Date: 03-28-2008

CIMAREX
ENERGY CO.
OF COLORADO

Exhibit B

Application to Drill
Juno 27 Federal Com No. 3
Cimarex Energy Co. of Colorado
Unit M, Section 27
T16S-R29E, Eddy County NM

In response to questions asked under Section II B of Bulletin NTL-6, the following information is provided for your consideration:

- 1 Location: 660' FSL & 660' FWL
- 2 Elevation above sea level: 3,650' GR
- 3 Geologic name of surface formation: Quaternary Alluvium Deposits
- 4 Drilling tools and associated equipment: Conventional rotary drilling rig using fluid as a circulating medium for solids removal.
- 5 Proposed drilling depth: 10,800'
- 6 Estimated tops of geological markers:

Grayburg	2,050'	U. Strawn SS	9,570'
San Andres	2,500'	Atoka Clastics	9,950'
Abo	5,950'	Morrow Clastics	10,325'
Wolfcamp	7,270'	Miss Unc.	10,450'
- 7 Possible mineral bearing formation:
Morrow Gas

8 Proposed Mud Circulating System:

Depth	Mud Wt	Visc	Fluid Loss	Type Mud
0 to 325'	8.4 - 8.6	30-32	May lose circ	Fresh water spud mud
325' to 2,650'	10.0	28-29	May lose circ	Brine Water
2,650' to 10,800'	8.6 - 9.5	28-29	NC	Fresh water and brine, use hi-vis sweeps to keep hole clean

Sufficient mud materials will be kept on location at all times in order to combat lost circulation, or unexpected kicks. In order to run DSTs, open hole logs, and casing, the viscosity and water loss may have to be adjusted in order to meet these needs. Mud system monitoring equipment with derrick floor indicators and visual/audio alarms shall be installed and operative prior to drilling into the Wolfcamp formation. This equipment will remain in use until production casing is run and cemented.

Application to Drill
Juno 27 Federal Com No. 3
Cimarex Energy Co. of Colorado
Unit M, Section 27
T16S-R29E, Eddy County NM

9 Casing & Cementing Program:

Hole Size	Depth		Casing OD		Weight	Thread	Collar	Grade
17-1/2"	0	to 325'	New	13-3/8"	48#	8-R	STC	H-40
12-1/4"	0	to 2,650'	New	9-5/8"	40#	8-R	LTC	J-55
8-3/4"	0	to 10,800'	New	5-1/2"	17#	8-R	BTC	P-110

10 Cementing & Setting Depth:

13-3/8"	Surface	Set 325 of 13-3/8"	48#	H-40	STC
<u>Lead:</u> 115 sx Light Premium Plus + 0.125 lb/sk Poly-E-Flake + 1% CaCl (wt 12.5, yld 1.97)					
<u>Tail:</u> 225 sk Premium Plus + 2% CaCl (wt 14.8, yld 1.35)					
TOC		Surface			
9-5/8"	Intermediate	Set 2,650 of 9-5/8"	40#	J-55	LTC
<u>Lead:</u> 430 sx Interfill C + 0.25 lb/sk Flocele (wt 11.9, yld 2.45)					
<u>Tail:</u> 250 sx Premium Plus + 1% CaCl (wt 14.8, yld 1.33)					
TOC		Surface			
5-1/2"	Production	Set 10,800 of 5-1/2"	17#	P-110	BTC
<u>Lead:</u> 945 sx Interfill H + 0.25% HR-7 + 5 lb/sk Gilsonite + 0.25 lb/sk Flocele (wt 11.9, yld 2.47)					
<u>Tail:</u> 536 sx Super H + 0.5% Halad-344 + 0.4% CFR-3 + 1 lbm/sk salt + 5 lb/sk Gilsonite + 0.125 lb/sk Poly-E-Flake + 0.35% HR-7 (wt 13.0, yld 1.67)					
TOC		2,450'			

Fresh water will be protected by setting 13-3/8" casing at 325 and cementing to Surface
Hydrocarbon zones will be protected by setting 9-5/8" casing at 2,650 and cementing to Surface
and by setting 5-1/2" casing at 10,800 and cementing to 2,450

Cimarex uses the following minimum safety factors:

Burst	Collapse	Tension
1.125	1.0	1.80

Application to Drill
Juno 27 Federal Com No. 3
Cimarex Energy Co. of Colorado
Unit M, Section 27
T16S-R29E, Eddy County NM

11 Pressure control Equipment:

Exhibit "E". A 11" 5000 PSI working pressure B.O.P. consisting of one set of blind rams and one set of pipe rams and a 5000# annular type preventer. A choke manifold and 120 gallon accumulator with floor and remote operating stations and auxiliary power system. Rotating head below 6000.' A kelly cock will be installed and maintained in operable condition and a drill string safety valve in the open position will be available on the rig floor.

BOP unit will be hydraulically operated. BOP will be nipped up and operated at least once a day while drilling and the blind rams will be operated when out of hole during trips. No abnormal pressure or temperature is expected while drilling. From the base of the surface pipe through the running of production casing, the well will be equipped with a 5000 psi BOP system.

We are requesting a variance for testing the 13 $\frac{3}{8}$ " surface casing from Onshore Order No. 2, which states that all casing strings below the conductor shall be pressure tested to 0.22 psi per foot or 1500 psi, whichever is greater, but not to exceed 70% of the manufacturer's stated maximum internal yield. We are requesting to test the 13 $\frac{3}{8}$ " casing to 1000 psi using rig pumps. The BOP will be tested to 3000 psi by an independent service company.

12 Testing, Logging and Coring Program:

- A. Mud logging 2 man unit from 2650' to TD
- B. Electric logging program: CNL / LDT / CAL / GR, DLL / CAL / GR
- C. No DSTs are planned at this time.

13 Potential Hazards:

No abnormal pressures or temperatures are expected. The area has a potential H₂S hazard. An H₂S drilling plan is attached. Adequate flare lines will be installed off the mud / gas separator where gas may be flared safely. All personnel will be familiar with all aspects of safe operation of equipment being used.

Estimated BHP **4000 psi** Estimated BHT **155**

14 Road and location construction will begin after BLM approval of APD. Anticipated spud date as soon as approved.

Drilling expected to take 35-45 days

If production casing is run an additional 30 days will be required to complete and construct surface facilities.

15 Other Facets of Operations:

After running casing, cased hole gamma ray neutron collar logs will be run from total depth over possible pay intervals.

Morrow pay will be perforated and stimulated.

The proposed well will be tested and potentialized as **a gas well.**

Rig 623

Cimarex Energy Co. of Colorado

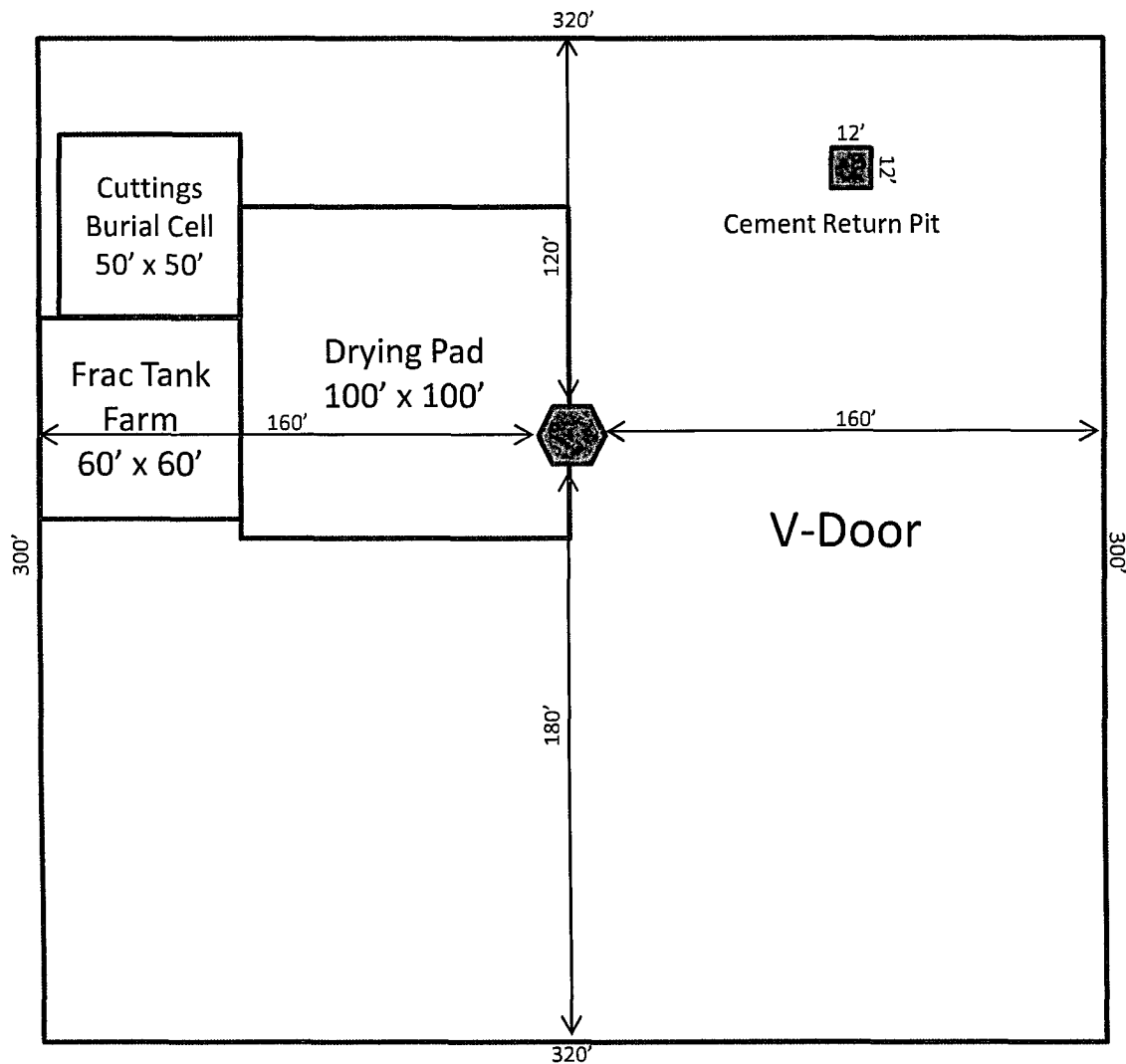
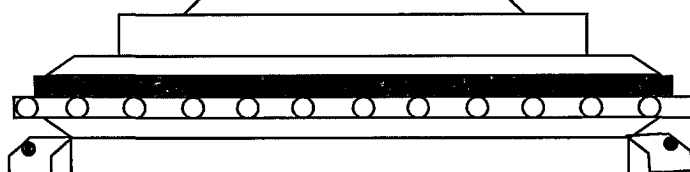
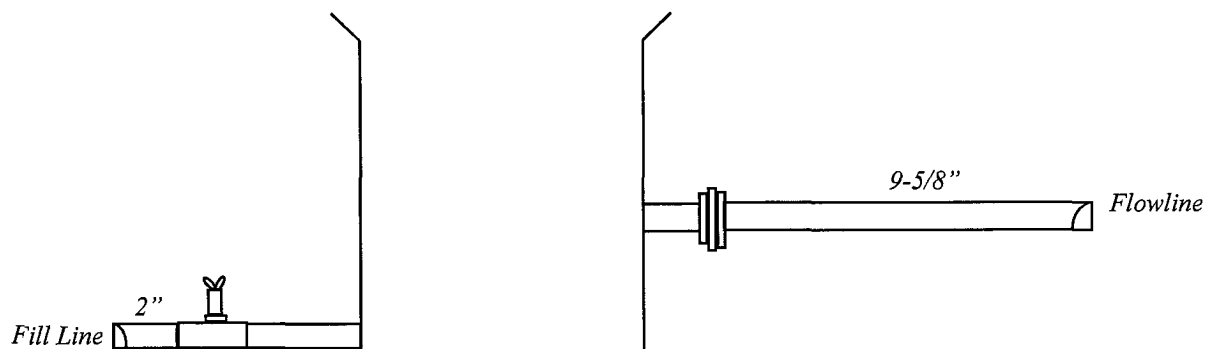
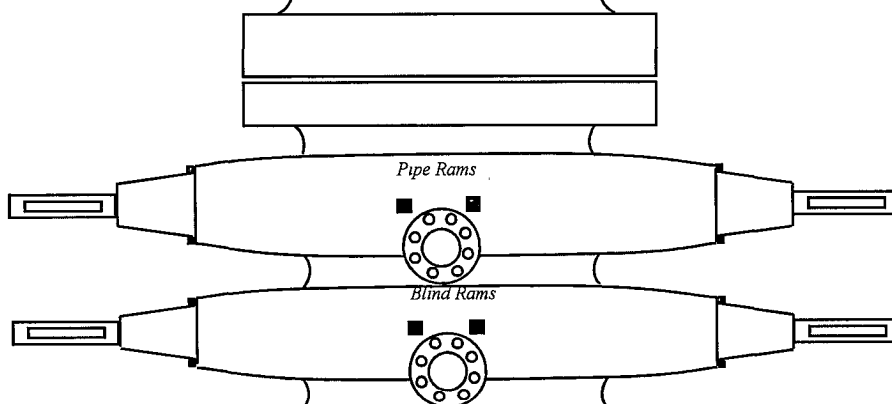


Exhibit D - Rig Layout
Juno 27 Federal Com No. 3
Cimarex Energy Co. of Colorado
27-16S-29E
SHL 660' FSL & 660' FWL
Eddy County, NM

SR & A

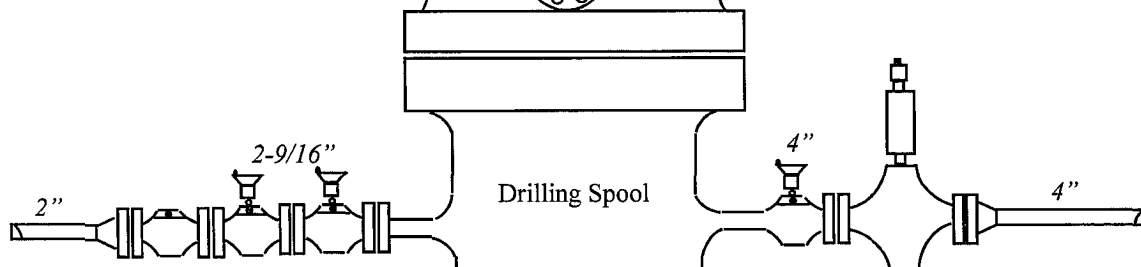


Hydril



Pipe Rams

Blind Rams



Drilling Spool

Choke Manifold

11 Line

Exhibit E – 5000# BOP Diagram
Juno 27 Federal Com No. 3
 Cimarex Energy Co. of Colorado
 27-16S-29E
 SHL 660' FSL & 660' FWL
 Eddy County, NM

13-5/8" 5,000# psi WP Flange

Slip-on Casing Head
 2-9/16"

**DRILLING OPERATIONS
CHOKE MANIFOLD
5M SERVICE**

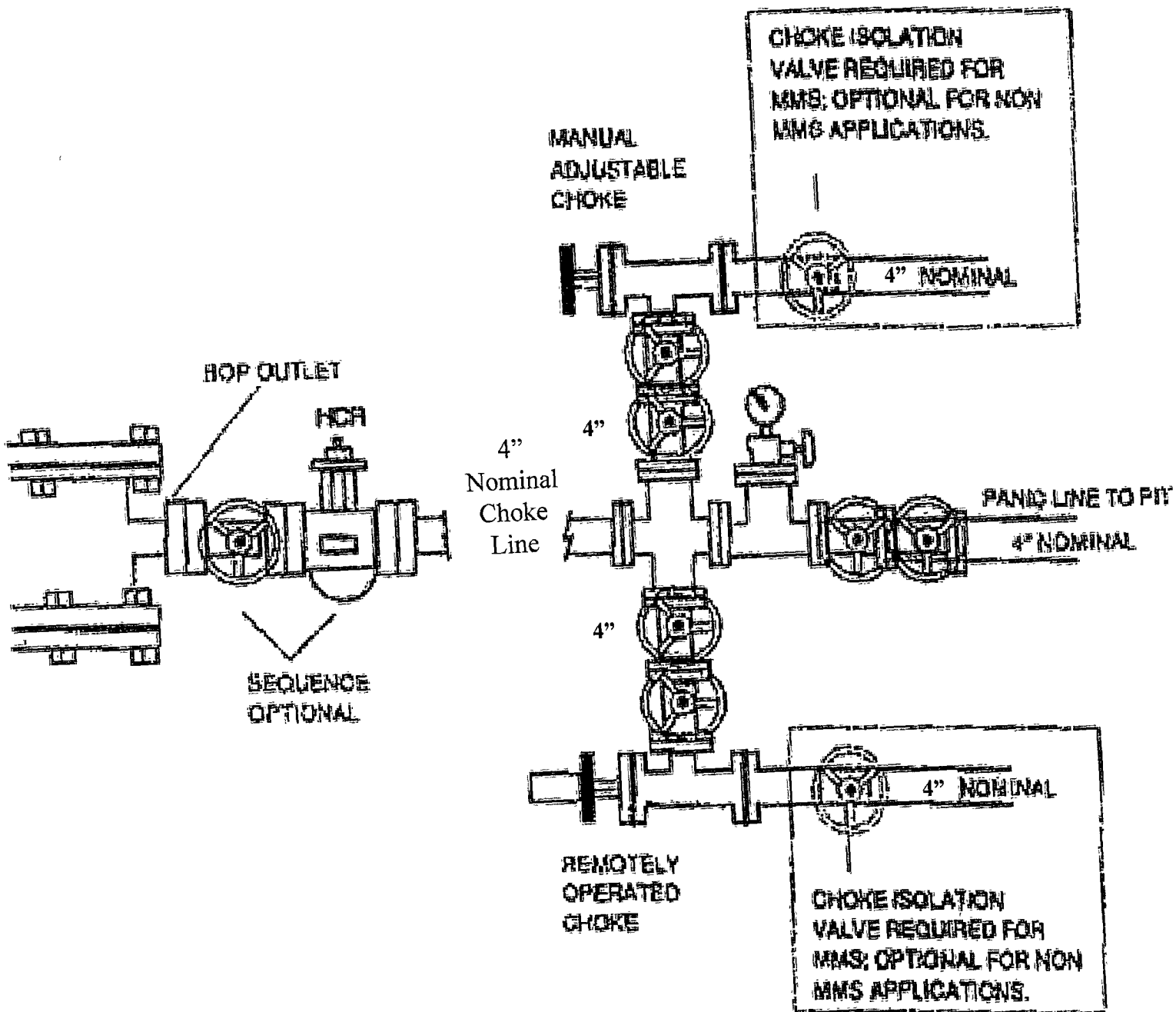


Exhibit E-1 – Choke Manifold Diagram
 Juno 27 Federal Com No. 3
 Cimarex Energy Co. of Colorado
 27-16S-29E
 SHL 660' FSL & 660' FWL
 Eddy County, NM

Hydrogen Sulfide Drilling Operations Plan
Juno 27 Federal Com No. 3
Cimarex Energy Co. of Colorado
Unit M, Section 27
T16S-R29E, Eddy County NM

- 1 All Company and Contract personnel admitted on location must be trained by a qualified H₂S safety instructor to the following:
 - A. Characteristics of H₂S
 - B. Physical effects and hazards
 - C. Proper use of safety equipment and life support systems.
 - D. Principle and operation of H₂S detectors, warning system and briefing areas.
 - E. Evacuation procedure, routes and first aid.
 - F. Proper use of 30 minute pressure demand air pack.
- 2 H₂S Detection and Alarm Systems:
 - A. H₂S detectors and audio alarm system to be located at bell nipple, end of flow line (mud pit) and on derrick floor or doghouse.
- 3 Windsock and/or wind streamers:
 - A. Windsock at mudpit area should be high enough to be visible.
 - B. Windsock at briefing area should be high enough to be visible.
- 4 Condition Flags and Signs:
 - A. Warning sign on access road to location.
 - B. Flags to be displayed on sign at entrance to location. Green flag indicates normal safe condition. Yellow flag indicates potential pressure and danger. Red flag indicates danger (H₂S present in dangerous concentration). Only emergency personnel admitted to location.
- 5 Well control equipment:
 - A. See exhibit "E"
- 6 Communication:
 - A. While working under masks chalkboards will be used for communication.
 - B. Hand signals will be used where chalk board is inappropriate.
 - C. Two way radio will be used to communicate off location in case of emergency help is required. In most cases cellular telephones will be available at most drilling foreman's trailer or living quarters.
- 7 Drillstem Testing:

No DSTs or cores are planned at this time.
- 8 Drilling contractor supervisor will be required to be familiar with the effects H₂S has on tubular goods and other mechanical equipment.
- 9 If H₂S is encountered, mud system will be altered if necessary to maintain control of formation. A mud gas separator will be brought into service along with H₂S scavengers if necessary.

H₂S Contingency Plan
Juno 27 Federal Com No. 3
Cimarex Energy Co. of Colorado
Unit M, Section 27
T16S-R29E, Eddy County NM

Emergency Procedures

In the event of a release of gas containing H₂S, the first responder(s) must:

- ★ Isolate the area and prevent entry by other persons into the 100 ppm ROE.
- ★ Evacuate any public places encompassed by the 100 ppm ROE.
- ★ Be equipped with H₂S monitors and air packs in order to control the release.
- ★ Use the "buddy system" to ensure no injuries occur during the response.
- ★ Take precautions to avoid personal injury during this operation.
- ★ Contact operator and/or local officials to aid in operation. See list of phone numbers attached.
- ★ Have received training in the:
 - ◆ Detection of H₂S, and
 - ◆ Measures for protection against the gas,
 - ◆ Equipment used for protection and emergency response.

Ignition of Gas Source

Should control of the well be considered lost and ignition considered, take care to protect against exposure to Sulfur Dioxide (SO₂). Intentional ignition must be coordinated with the NMOCD and local officials. Additionally, the NM State Police may become involved. NM State Police shall be the Incident Command on scene of any major release. Take care to protect downwind whenever there is an ignition of the gas.

Characteristics of H₂S and SO₂

Common Name	Chemical Formula	Specific Gravity	Threshold Limit	Hazardous Limit	Lethal Concentration
Hydrogen Sulfide	H ₂ S	1.189 Air=1	10 ppm	100 ppm/hr	600 ppm
Sulfur Dioxide	SO ₂	2.21 Air=1	2 ppm	N/A	1000 ppm

Contacting Authorities

Cimarex Energy Co. of Colorado's personnel must liaise with local and state agencies to ensure a proper response to a major release. Additionally, the OCD must be notified of the release as soon as possible but no later than 4 hours. Agencies will ask for information such as type and volume of release, wind direction, location of release, etc. Be prepared with all information available including directions to site. The following call list of essential and potential responders has been prepared for use during a release. Cimarex Energy Co. of Colorado's response must be in coordination with the State of New Mexico's "Hazardous Materials Emergency Response Plan" (HMER).

H₂S Contingency Plan Emergency Contacts

Juno 27 Federal Com No. 3

Cimarex Energy Co. of Colorado

Unit M, Section 27

T16S-R29E, Eddy County NM

Company Office

Cimarex Energy Co. of Colorado
Co. Office and After-Hours Menu

800-969-4789

Key Personnel

Name	Title	Office	Mobile
Doug Park	Drilling Manager	972-443-6463	972-333-1407
Dee Smith	Drilling Super	972-443-6491	972-882-1010
Jim Evans	Drilling Super	972-443-6451	972-465-6564
Dorsey Rogers	Field Super		505-200-6105
Roy Shirley	Field Super		432-634-2136

Artesia

Ambulance	911
State Police	575-746-2703
City Police	575-746-2703
Sheriff's Office	575-746-9888
Fire Department	575-746-2701
Local Emergency Planning Committee	575-746-2122
New Mexico Oil Conservation Division	575-748-1283

Carlsbad

Ambulance	911
State Police	575-885-3137
City Police	575-885-2111
Sheriff's Office	575-887-7551
Fire Department	575-887-3798
Local Emergency Planning Committee	575-887-6544
US Bureau of Land Management	575-887-6544

Santa Fe

New Mexico Emergency Response Commission (Santa Fe)	505-476-9600
New Mexico Emergency Response Commission (Santa Fe) 24 Hrs	505-827-9126
New Mexico State Emergency Operations Center	505-476-9635

National

National Emergency Response Center (Washington, D.C.)	800-424-8802
---	--------------

Medical

Flight for Life - 4000 24th St.; Lubbock, TX	806-743-9911
Aerocare - R3, Box 49F; Lubbock, TX	806-747-8923
Med Flight Air Amb - 2301 Yale Blvd S.E., #D3; Albuquerque, NM	505-842-4433
SB Air Med Service - 2505 Clark Carr Loop S.E.; Albuquerque, NM	505-842-4949

Other

Boots & Coots IWC	800-256-9688	or	281-931-8884
Cudd Pressure Control	432-699-0139	or	432-563-3356
Halliburton	575-746-2757		
B.J. Services	575-746-3569		

Surface Use Plan
Juno 27 Federal Com No. 3
Cimarex Energy Co. of Colorado
Unit M, Section -R29E, Eddy County
#REF! #REF!

1 Existing Roads:

Area maps, Exhibit "B" is a reproduction of Eddy Co. General Highway Map. Exhibit "C" is a reproduction of a USGS Topographic Map, showing existing roads and proposed roads. All existing roads will be maintained in a condition equal to or better than current conditions. Any new roads will be constructed to BLM specifications.

A. Exhibit "A" shows the proposed well site as staked.

B. From the junction of Hwy 82 and Barnival Draw Road, go North to lease road for Juno wells and proposed lease road.

2 Planned Access Roads:

2301.6' of on-lease access road is proposed.

3 Location of existing wells in a one-mile radius Exhibit "A":

- | | |
|----------------------|-------------------------|
| A. Water wells - | None known |
| B. Disposal wells - | None known |
| C. Drilling wells - | None known |
| D. Producing wells - | As shown on Exhibit "A" |
| E. Abandoned wells - | As shown on Exhibit "A" |

Surface Use Plan
Juno 27 Federal Com No. 3
Cimarex Energy Co. of Colorado
Unit M, Section 27
T16S-R29E, Eddy County NM

- 4 If on completion this well is a producer, Cimarex Energy Co. of Colorado will furnish maps and/or plats showing on site facilities or off site facilities if needed. This will be accompanied by a Sundry Notice.
- 5 Location and Type of Water Supply:
Water will be purchased locally from a commercial source and trucked over the access roads or piped in flexible lines laid on top of the ground.
- 6 Source of Construction Material:
If possible, construction will be obtained from the excavation of drill site. If additional material is needed, it will be purchased from a local source and transported over the access route as shown on Exhibit "C".
- 7 Methods of Handling Waste Material:
 - A. Drill cuttings will be disposed of in the reserve pit and hauled to a State-approved disposal facility.
 - B. All trash, junk and other waste material will be contained in trash cages or bins to prevent scattering. When the job is completed all contents will be removed and disposed of in an approved sanitary land fill.
 - C. Salts remaining after completion of well will be picked up by supplier including broken sacks.
 - D. Sewage from living quarters will drain into holding tanks and be cleaned out periodically. A Porta-John will be provided for the rig crews. This equipment will be properly maintained during the drilling operations and removed upon completion of the well.
 - E. Remaining drilling fluids will be hauled off by transports and be disposed of at a State approved disposal facility. Water produced during drilling will be put in reserve pit. Any oil or condensate produced will be stored in test tanks until sold and hauled from the site.
- 8 Ancillary Facilities:
 - A. No camps or airstrips to be constructed.

Surface Use Plan
Juno 27 Federal Com No. 3
Cimarex Energy Co. of Colorado
Unit M, Section 27
T16S-R29E, Eddy County NM

9 Well Site Layout:

- A. Exhibit "D" shows location and rig layout.
- B. This exhibit indicates proposed location of reserve and trash pits and living facilities.
- C. Mud pits in the active circulating system will be steel pits and the reserve pit is proposed to be lined with PVC or polyethylene liner. The pit liner will be 12 mils thick. Pit liner will extend a minimum, 2'00" over the reserve pits dikes where the liner will be anchored down.
- D. The reserve pit will be fenced on three sides with four strands of barbed wire during drilling and completion phases. The fourth side will be fenced after all drilling operations have ceased. If the well is a producer, the reserve pit fence will be torn down. The reserve pit and those areas of the location not essential to production facilities will be reclaimed and seeded per BLM requirements.

10 Plans for Restoration of Surface:

Rehabilitation of the location and reserve pit will start in a timely manner after all drilling operations cease. The type of reclamation will depend on whether the well is a producer or a dry hole.

However, in either event, fluid and cuttings will be removed and disposed of in accordance with Article 7.B as previously noted. The pit area will then be leveled and contoured to conform to the original and surrounding area. Drainage systems, if any, will be reshaped to the original configuration with provisions made to alleviate erosion. These may need to be modified in certain circumstances to prevent inundation of the location's pad and surface facilities. After the area has been shaped and contoured, topsoil from the spoil pile will be placed over the disturbed area to the extent possible. Revegetation procedures will comply with BLM standards.

If the well is a dry hole, the pad and road area will be recountoured to match the existing terrain. Topsoil will be spread to the extent possible. Revegetation will comply with BLM standards.

Should the well be a producer, the previously noted procedures will apply to those areas which are not required for production facilities.

11 Other Information:

- A. Topography consists of a sloping plane with loose tan sands. Vegetation is mainly yucca, mesquite and shin oak.
- B. The wellsite is on surface owned by the Department of the Interior, Bureau of Land Management. The land is used mainly for farming, cattle ranching, recreational use, and oil and gas production.
- C. An Archaeological survey will be conducted on the location and proposed roads, and this report will be filed with the Bureau of Land Management in the Carlsbad BLM office.
- D. There are no know dwellings within 1½ miles of this location.

Operator Certification Statement
Juno 27 Federal Com No. 3
Cimarex Energy Co. of Colorado
Unit M, Section 27
T16S-R29E, Eddy County NM

Operator's Representative

Cimarex Energy Co. of Colorado
P.O. Box 140907
Irving, TX 75014
Office Phone: (972) 443-6489
Zeno Farris

CERTIFICATION: I hereby certify that the statements and plans made in this APD are, to the best of my knowledge, true and correct; and that the work associated with the operations proposed herein will be performed by Cimarex Energy Co. of Colorado and/or its contractors/subcontractors and is in conformity with this plan and the terms and conditions under which it is approved. This statement is subject to the provision of U.S.C. 1001 for the filing of a false statement.

NAME:

Natalie Krueger
Natalie Krueger

DATE:

May 30, 2008

TITLE:

Regulatory Analyst

PECOS DISTRICT CONDITIONS OF APPROVAL

OPERATOR'S NAME:	Cimarex Energy Co of Colorado
LEASE NO.:	NM-12128
WELL NAME & NO.:	Juno 27 Federal Com No. 3
SURFACE HOLE FOOTAGE:	660' FSL & 660' FWL
BOTTOM HOLE FOOTAGE	Same
LOCATION:	Section 27, T. 16 S., R 29 E., NMPM
COUNTY:	Eddy County, New Mexico

TABLE OF CONTENTS

Standard Conditions of Approval (COA) apply to this APD. If any deviations to these standards exist or special COAs are required, the section with the deviation or requirement will be checked below.

- ☐ **General Provisions**
- ☐ **Permit Expiration**
- ☐ **Archaeology, Paleontology, and Historical Sites**
- ☐ **Noxious Weeds**
- ☒ **Special Requirements**
 - Cave/Karst
- ☒ **Construction**
 - Notification
 - Topsoil
 - Closed Loop System**
 - Federal Mineral Material Pits
 - Well Pads
 - Roads
- ☐ **Road Section Diagram**
- ☒ **Drilling**
- ☐ **Production (Post Drilling)**
 - Well Structures & Facilities
- ☒ **Cuttings Burial Cell Pit Closure/Interim Reclamation**
- ☐ **Final Abandonment/Reclamation**

I. GENERAL PROVISIONS

The approval of the Application For Permit To Drill (APD) is in compliance with all applicable laws and regulations: 43 Code of Federal Regulations 3160, the lease terms, Onshore Oil and Gas Orders, Notices To Lessees, New Mexico Oil Conservation Division (NMOCD) Rules, National Historical Preservation Act As Amended, and instructions and orders of the Authorized Officer. Any request for a variance shall be submitted to the Authorized Officer on Form 3160-5, Sundry Notices and Report on Wells.

II. PERMIT EXPIRATION

If the permit terminates prior to drilling and drilling cannot be commenced within 60 days after expiration, an operator is required to submit Form 3160-5, Sundry Notices and Reports on Wells, requesting surface reclamation requirements for any surface disturbance. However, if the operator will be able to initiate drilling within 60 days after the expiration of the permit, the operator must have set the conductor pipe in order to allow for an extension of 60 days beyond the expiration date of the APD. (Filing of a Sundry Notice is required for this 60 day extension.)

III. ARCHAEOLOGICAL, PALEONTOLOGY & HISTORICAL SITES

Any cultural and/or paleontological resource discovered by the operator or by any person working on the operator's behalf shall immediately report such findings to the Authorized Officer. The operator is fully accountable for the actions of their contractors and subcontractors. The operator shall suspend all operations in the immediate area of such discovery until written authorization to proceed is issued by the Authorized Officer. An evaluation of the discovery shall be made by the Authorized Officer to determine the appropriate actions that shall be required to prevent the loss of significant cultural or scientific values of the discovery. The operator shall be held responsible for the cost of the proper mitigation measures that the Authorized Officer assesses after consultation with the operator on the evaluation and decisions of the discovery. Any unauthorized collection or disturbance of cultural or paleontological resources may result in a shutdown order by the Authorized Officer.

IV. NOXIOUS WEEDS

The operator shall be held responsible if noxious weeds become established within the areas of operations. Weed control shall be required on the disturbed land where noxious weeds exist, which includes the roads, pads, associated pipeline corridor, and adjacent land affected by the establishment of weeds due to this action. The operator shall consult with the Authorized Officer for acceptable weed control methods, which include following EPA and BLM requirements and policies.

V. SPECIAL REQUIREMENT(S)

Conditions of Approval

Cave and Karst

EA#: NM-520-08-0970

Lease #: NM-12128

Cimarex Energy Company of Colorado

Juno 27 Federal Com No.3

**** Depending on location, additional Drilling, Casing, and Cementing procedures may be required to protect critical karst groundwater recharge areas.**

Cave/Karst Surface Mitigation

The following stipulations will be applied to minimize impacts during construction, drilling and production.

Berming:

Tank batteries will be bermed to contain 1 ½ times the content of the largest tank.

Bermed areas will be lined with a 4 oz. felt liner to prevent tears or punctures and a permanent 20 mil plastic liner.

Cave/Karst Subsurface Mitigation

The following stipulations will be applied to protect cave/karst and ground water concerns:

Lost Circulation:

ALL lost circulation zones from the surface to the base of the cave occurrence zone will be logged and reported in the drilling report.

Regardless of the type of drilling machinery used, if a void of four feet or more and circulation losses greater than 70 percent occur simultaneously while drilling in any cave-bearing zone, the BLM will be notified immediately by the operator. The BLM will assess the situation and work with the operator on corrective actions to resolve the problem.

Delayed Blasting:

Any blasting will be phased and time delayed.

Abandonment Cementing:

Upon well abandonment the well bore will be cemented completely from 100 feet below the bottom of the cave bearing zone to the surface.

VI. CONSTRUCTION

A. NOTIFICATION

The BLM shall administer compliance and monitor construction of the access road and well pad. Notify the Carlsbad Field Office at (505) 234-5972 at least 3 working days prior to commencing construction of the access road and/or well pad.

When construction operations are being conducted on this well, the operator shall have the approved APD and Conditions of Approval (COA) on the well site and they shall be made available upon request by the Authorized Officer.

B. TOPSOIL

The operator shall stockpile the topsoil of the well pad. The topsoil to be stripped is approximately 6 inches in depth. The topsoil shall not be used to backfill the reserve pit and will be used for interim and final reclamation.

C. CUTTINGS BURIAL CELL PIT

This will be a closed loop system.

The cuttings burial cell pit shall be constructed and closed in accordance with the NMOCD rules.

The cuttings burial cell pit shall be constructed 50' X 50' on the East side of the well pad.

The cuttings burial cell pit shall be constructed, so that upon completion of drilling operations, the dried pit contents shall be buried a minimum depth of three feet below ground level. Should the pit content level not meet the three foot minimum depth requirement, the excess contents shall be removed until the required minimum depth of three feet below ground level has been met. The operator shall properly dispose of the excess contents at an authorized disposal site.

The cuttings burial cell pit shall be constructed and maintained so that runoff water from outside the location is not allowed to enter the pit. The berms surrounding the entire perimeter of the pit shall extend a minimum of two (2) feet above ground level. At no time will standing fluids in the pit be allowed to rise above ground level.

The cuttings burial cell pit shall be fenced on three (3) sides during drilling operations. The fourth side shall be fenced immediately upon rig release.

Tanks are required for drilling operations: No Reserve Pits.

The operator shall properly dispose of drilling contents at an authorized disposal site.

D. FEDERAL MINERAL MATERIALS PIT

If the operator elects to surface the access road and/or well pad, mineral materials extracted during construction of the reserve pit may be used for surfacing the well pad and access road and other facilities on the lease.

Payment shall be made to the BLM prior to removal of any additional federal mineral materials from any site other than the reserve pit. Call the Carlsbad Field Office at (505) 234-5972.

E. WELL PAD SURFACING

Surfacing of the well pad is not required.

If the operator elects to surface the well pad, the surfacing material may be required to be removed at the time of reclamation.

The well pad shall be constructed in a manner which creates the smallest possible surface disturbance, consistent with safety and operational needs.

F. ON LEASE ACCESS ROADS

Road Width

The access road shall have a driving surface that creates the smallest possible surface disturbance and does not exceed fourteen (14) feet in width. The maximum width of surface disturbance, when constructing the access road, shall not exceed thirty (30) feet.

Surfacing

Surfacing material is not required on the new access road driving surface. If the operator elects to surface the new access road or pad, the surfacing material may be required to be removed at the time of reclamation.

Where possible, no improvements should be made on the unsurfaced access road other than to remove vegetation as necessary, road irregularities, safety issues, or to fill low areas that may sustain standing water.

The Authorized Officer reserves the right to require surfacing of any portion of the access road at any time deemed necessary. Surfacing may be required in the event the road deteriorates, erodes, road traffic increases, or it is determined to be beneficial for future field development. The surfacing depth and type of material will be determined at the time of notification.

Crowning

Crowning shall be done on the access road driving surface. The road crown shall have a grade of approximately 2% (i.e., a 1" crown on a 14' wide road). The road shall conform to Figure 1; cross section and plans for typical road construction.

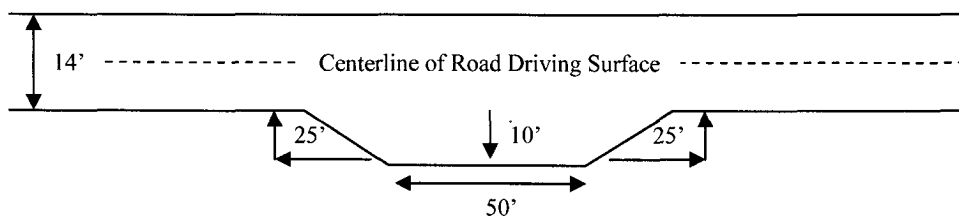
Ditching

Ditching shall be required on both sides of the road.

Turnouts

Vehicle turnouts shall be constructed on the road. Turnouts shall be intervisible with interval spacing distance less than 1000 feet. Turnouts shall be constructed on all blind curves. Turnouts shall conform to the following diagram:

Standard Turnout – Plan View

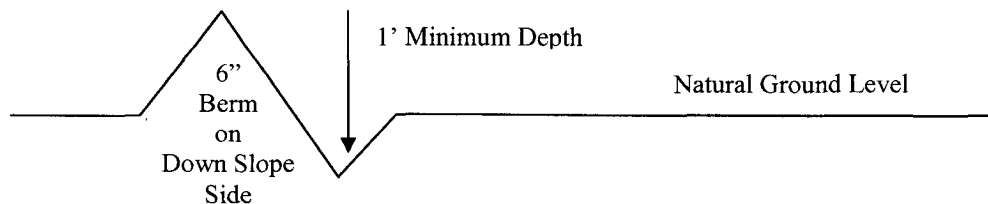


Drainage

Drainage control systems shall be constructed on the entire length of road (e.g. ditches, sidehill outsloping and insloping, lead-off ditches, culvert installation, and low water crossings).

A typical lead-off ditch has a minimum depth of 1 foot below and a berm of 6 inches above natural ground level. The berm shall be on the down-slope side of the lead-off ditch.

Cross Section of a Typical Lead-off Ditch



All lead-off ditches shall be graded to drain water with a 1 percent minimum to 3 percent maximum ditch slope. The spacing interval are variable for lead-off ditches and shall be determined according to the formula for spacing intervals of lead-off ditches, but may be amended depending upon existing soil types and centerline road slope (in %);

Formula for Spacing Interval of Lead-off Ditches

Example - On a 4% road slope that is 400 feet long, the water flow shall drain water into a lead-off ditch. Spacing interval shall be determined by the following formula:

$$400 \text{ foot road with } 4\% \text{ road slope: } \frac{400'}{4\%} + 100' = 200' \text{ lead-off ditch interval}$$

Culvert Installations

Appropriately sized culvert(s) shall be installed at the deep waterway channel flow crossing.

Cattleguards

An appropriately sized cattleguard(s) sufficient to carry out the project shall be installed and maintained at fence crossing(s).

Any existing cattleguard(s) on the access road shall be repaired or replaced if they are damaged or have deteriorated beyond practical use. The operator shall be responsible for the condition of the existing cattleguard(s) that are in place and are utilized during lease operations.

A gate shall be constructed and fastened securely to H-braces.

Fence Requirement

Where entry is required across a fence line, the fence shall be braced and tied off on both sides of the passageway prior to cutting.

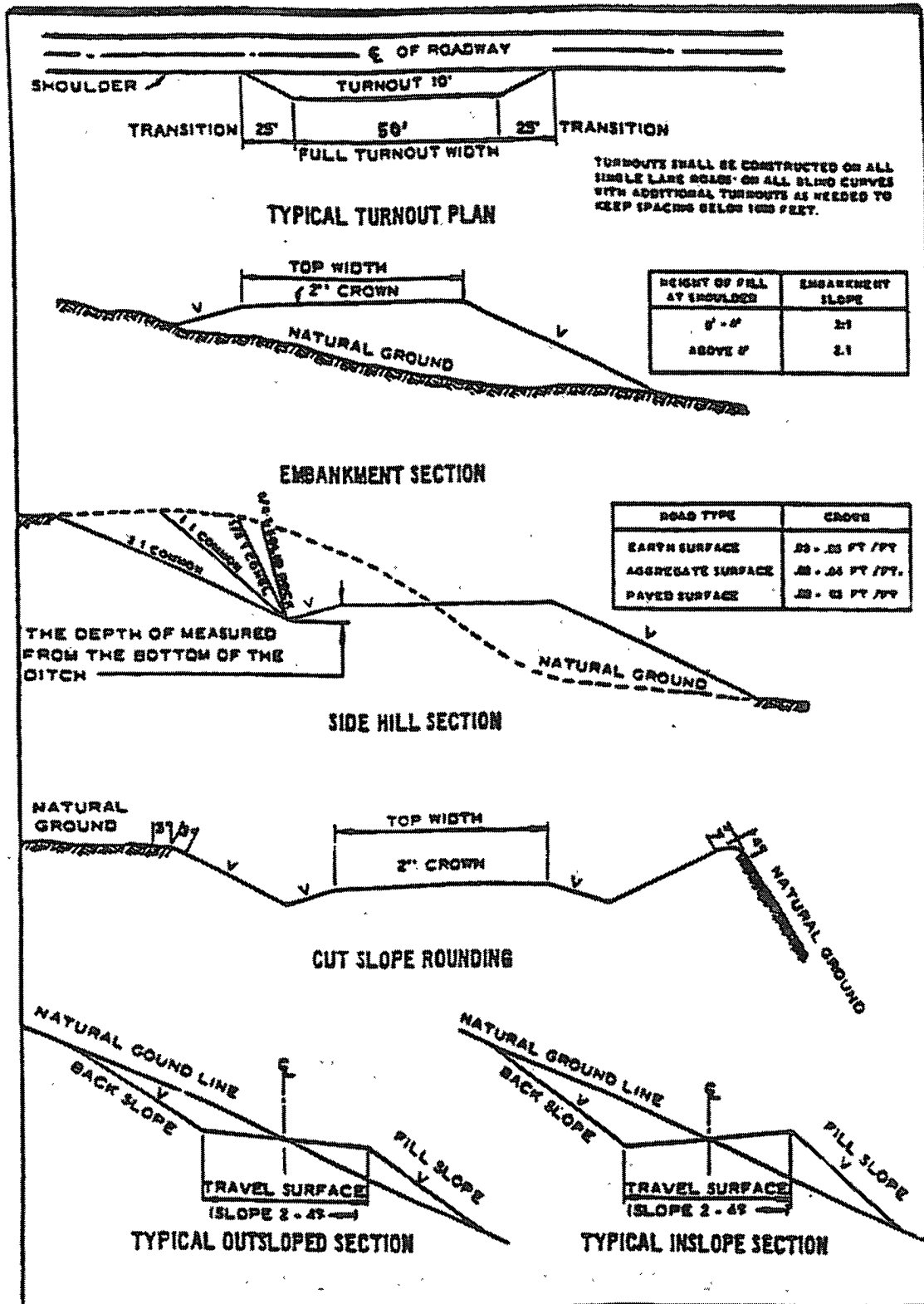
The operator shall notify the private surface landowner or the grazing allotment holder prior to crossing any fence(s).

Public Access

Public access on this road shall not be restricted by the operator without specific written approval granted by the Authorized Officer.

7/15/08
This page
left blank.
OK

Figure 1 – Cross Sections and Plans For Typical Road Sections



VII. DRILLING

A. DRILLING OPERATIONS REQUIREMENTS

The BLM is to be notified a minimum of 4 hours in advance for a representative to witness:

- a. Spudding well
- b. Setting and/or Cementing of all casing strings
- c. BOPE tests

☒ **Eddy County**

**Call the Carlsbad Field Office, 620 East Greene St., Carlsbad, NM 88220,
(575) 361-2822**

1. **Although Hydrogen Sulfide has not been reported in this section, it is always a potential hazard. The operator states the area has a potential H₂S hazard and has attached an H₂S Drilling Plan. If Hydrogen Sulfide is encountered, please report measured amounts and formations to the BLM.**
2. Unless the production casing has been run and cemented or the well has been properly plugged, the drilling rig shall not be removed from over the hole without prior approval.
3. Floor controls are required for 3M or Greater systems. These controls will be on the rig floor, unobstructed, readily accessible to the driller and will be operational at all times during drilling and/or completion activities. Rig floor is defined as the area immediately around the rotary table; the area immediately above the substructure on which the draw works are located, this does not include the dog house or stairway area.

B. CASING

Changes to the approved APD casing and cement program require submitting a sundry and receiving approval prior to work. Failure to obtain approval prior to work will result in an Incident of Non-Compliance being issued.

Centralizers required on surface casing per Onshore Order 2.III.B.1.f.

Provide compressive strengths including hours to reach required 500 pounds compressive strength prior to cementing each casing string.

No pea gravel permitted for remedial or fall back remedial without prior authorization from the BLM engineer.

**Possible lost circulation in Grayburg & San Andres Formations
Wolfcamp, Atoka & Morrow can contain high pressure gas**

1. The 13-3/8 inch surface casing shall be set at approximately 325 feet (a minimum of 25 feet into the Rustler Anhydrite and above the salt) and cemented to the surface.
 - a. If cement does not circulate to the surface, the appropriate BLM office shall be notified and a temperature survey utilizing an electronic type temperature survey with a surface log readout will be used or a cement bond log shall be run to verify the top of the cement.
 - b. Wait on cement (WOC) time for a primary cement job will be a minimum 18 hours for a water basin, 24 hours in the potash area, or 500 pounds compressive strength, whichever is greater. (This is to include the lead cement).
 - c. Wait on cement (WOC) time for a remedial job will be a minimum of 4 hours after bringing cement to surface or 500 pounds compressive strength, whichever is greater.
 - d. If cement falls back, remedial cementing will be done prior to drilling out that string.
2. The minimum required fill of cement behind the 9-5/8 inch intermediate casing is:
☒ Cement to surface. If cement does not circulate see B.1.a-d above.
3. The minimum required fill of cement behind the 5-1/2 inch production casing is:
☒ Cement should tie-back at least **200** feet into previous casing string. **Operator shall provide method of verification.**
4. If hardband drill pipe is rotated inside casing, returns will be monitored for metal. If metal is found in samples, drill pipe will be pulled and rubber protectors which have a larger diameter than the tool joints of the drill pipe will be installed prior to continuing drilling operations.

C. PRESSURE CONTROL

1. All blowout preventer (BOP) and related equipment (BOPE) shall comply with well control requirements as described in Onshore Oil and Gas Order No. 2 and API RP 53 Sec. 17.

2. The appropriate BLM office shall be notified a minimum of 4 hours in advance for a representative to witness the tests.
 - a. The tests shall be done by an independent service company.
 - b. The results of the test shall be reported to the appropriate BLM office.
 - c. All tests are required to be recorded on a calibrated test chart. A copy of the BOP/BOPE test chart and a copy of independent service company test will be submitted to the appropriate BLM office.
 - d. The BOP/BOPE test shall include a low pressure test from 250 to 300 psi. The test will be held for a minimum of 10 minutes if test is done with a test plug and 30 minutes without a test plug.
 - e. BOP/BOPE must be tested by an independent service company within **500** feet of the top of the **Wolfcamp** formation if the time between the setting of the intermediate casing and reaching this depth exceeds 20 days. This test does not exclude the test prior to drilling out the casing shoe as per Onshore Order No. 2.
 - f. A variance to test only the surface casing to the reduced pressure of **1000** psi with the rig pumps is approved. **The BOP will be tested to 3000 psi by an independent service company.**

D. DRILLING MUD

Mud system monitoring equipment, with derrick floor indicators and visual and audio alarms, shall be operating before drilling into the **Wolfcamp** formation, and shall be used until production casing is run and cemented.

E. DRILL STEM TEST

If drill stem tests are performed, Onshore Order 2.III.D shall be followed.

LB 7/03/08

VIII. PRODUCTION (POST DRILLING)

A. WELL STRUCTURES & FACILITIES

Placement of Production Facilities

Production facilities should be placed on the well pad to allow for maximum interim recontouring and revegetation of the well location.

Containment Structures

The containment structure shall be constructed to hold the capacity of the entire contents of the largest tank, plus 24 hour production, unless more stringent protective requirements are deemed necessary by the Authorized Officer.

Painting Requirement

All above-ground structures including meter housing that are not subject to safety requirements shall be painted a flat non-reflective paint color
Shale Green, Munsell Soil Color Chart # 5Y 4/2

IX. INTERIM RECLAMATION & RESERVE PIT CLOSURE

A. INTERIM RECLAMATION

If the well is a producer, interim reclamation shall be conducted on the well site in accordance with the orders of the Authorized Officer. The operator shall submit a Sundry Notices and Reports on Wells (Notice of Intent), Form 3160-5, prior to conducting interim reclamation.

During the life of the development, all disturbed areas not needed for active support of production operations should undergo interim reclamation in order to minimize the environmental impacts of development on other resources and uses.

At the time cuttings burial cell pit is to be reclaimed, operators should work with BLM surface management specialists to devise the best strategies to reduce the size of the location. Any reductions should allow for remedial well operations, as well as safe and efficient removal of oil and gas.

During reclamation, the removal of caliche is important to increasing the success of revegetating the site. Removed caliche may be used for road repairs, fire walls or for building other roads and locations. In order to operate the well or complete workover operations, it may be necessary to drive, park and operate on restored interim vegetation within the previously disturbed area. Disturbing revegetated areas for production or workover operations will be allowed. If there is significant disturbance and loss of vegetation, the area will need to be revegetated. Communicate with the appropriate BLM office for any exceptions/exemptions if needed.

B. CUTTINGS BURIAL CELL PIT CLOSURE

The cuttings burial cell pit, when dried and closed, shall be recontoured, all trash removed, and reseeded as follows:

Seed Mixture 2, for Sandy Sites

The holder shall seed all disturbed areas with the seed mixture listed below. The seed mixture shall be planted in the amounts specified in pounds of pure live seed (PLS)* per acre. There shall be no primary or secondary noxious weeds in the seed mixture. Seed will be tested and the viability testing of seed will be done in accordance with State law (s) and within nine (9) months prior to purchase. Commercial seed will be either certified or registered seed. The seed container will be tagged in accordance with State law(s) and available for inspection by the authorized officer.

Seed will be planted using a drill equipped with a depth regulator to ensure proper depth of planting where drilling is possible. The seed mixture will be evenly and uniformly planted over the disturbed area (smaller/heavier seeds have a tendency to drop the bottom of the drill and are planted first). The holder shall take appropriate measures to ensure this does not occur. Where drilling is not possible, seed will be broadcast and the area shall be raked or chained to cover the seed. When broadcasting the seed, the pounds per acre are to be doubled. The seeding will be repeated until a satisfactory stand is established as determined by the authorized officer. Evaluation of growth will not be made before completion of at least one full growing season after seeding.

Species to be planted in pounds of pure live seed* per acre:

<u>Species</u>	<u>lb/acre</u>
Sand dropseed (<i>Sporobolus cryptandrus</i>)	1.0
Sand love grass (<i>Eragrostis trichodes</i>)	1.0
Plains bristlegrass (<i>Setaria macrostachya</i>)	2.0

*Pounds of pure live seed:

Pounds of seed x percent purity x percent germination = pounds pure live seed

X. FINAL ABANDONMENT & REHABILITATION REQUIREMENTS

Upon abandonment of the well and/or when the access road is no longer in service the Authorized Officer shall issue instructions and/or orders for surface reclamation and restoration of all disturbed areas.

On private surface/federal mineral estate land the reclamation procedures on the road and well pad shall be accomplished in accordance with the private surface land owner agreement.