

District I
1625 N. French Dr., Hobbs, NM 88240
District II
811 South First, Artesia, NM 88210
District III
1000 Rio Brazos Road, Aztec, NM 87410
District IV
2040 South Pacheco, Santa Fe, NM 87505

State of New Mexico
Energy Minerals and Natural Resources

Form C-101
Revised March 17, 1999

Oil Conservation Division
2040 South Pacheco
Santa Fe, NM 87505

Submit to appropriate District Office
State Lease - 6 Copies
Lease - 5 Copies

S JUL 18 2008
OCD-ARTESIA

☐ AMENDED REPORT

APPLICATION FOR PERMIT TO DRILL, RE-ENTER, DEEPEN, PLUGBACK, OR ADD A ZONE

¹ Operator Name and Address CHI OPERATING, INC. P.O. Box 1799 Midland, Texas 79702		² OGRID Number 004378
³ Property Code 23906	⁵ Property Name Giblet State	³ API Number 30-015-36442 ⁶ Well No. 2

⁷ Surface Location

UL or lot no	Section	Township	Range	Lot Idn	Feet from the	North/South line	Feet from the	East/West line	County
A	1	19S	29E		660	NORTH	660	EAST	EDDY

⁸ Proposed Bottom Hole Location If Different From Surface

UL or lot no	Section	Township	Range	Lot Idn	Feet from the	North/South line	Feet from the	East/West line	County

⁹ Proposed Pool 1

TURKEY TRACK MORROW

¹⁰ Proposed Pool 2

¹¹ Work Type Code N	¹² Well Type Code G	¹³ Cable/Rotary R	¹⁴ Lease Type Code S	¹⁵ Ground Level Elevation 3420'
¹⁶ Multiple	¹⁷ Proposed Depth 11,800	¹⁸ Formation Morrow	¹⁹ Contractor	²⁰ Spud Date ASAP

²¹ Proposed Casing and Cement Program

Hole Size	Casing Size	Casing weight/foot	Setting Depth	Sacks of Cement	Estimated TOC
17 1/2	13 3/8"	48	350' ✓	250	0'-CIRC
12 1/4	9 5/8"	32	3000'	400	0'
8 3/4	5 1/2	17/20	11,800'	500	8,000'±

²² Describe the proposed program. If this application is to DEEPEN or PLUG BACK, give the data on the present productive zone and proposed new productive zone.

Describe the blowout prevention program, if any. Use additional sheets if necessary.

MIRU CONTRACTOR DRILL 17 1/2" HOLE TO ±350' & SET 13 3/8" CSG W/HARDWARE. CEMENT W/250 SKS. CIRC TO SURFACE. WOC 18 HRS. CUT CSG & INSTALL CSG HEAD. DRL. 12 1/4" HOLE TO ±3000'. CMT W/400 SKS & CIRC. (MIN. OF TIE BACK TO SURFACE CSG. INSTALL BOP & TST TO 5000#. DRILL 8 3/4" HOLE TO ±11,900'. LOG & EVALUATE. RUN 5 1/2" CSG & HARDWARE & CEMENT.

²³ I hereby certify that the information given above is true and complete to the best of my knowledge and belief.

Signature:

P. Corbett

Printed name. Pam Corbett

Title: ENGINEER TECH

Date 6/22/08

Phone: 915-685-5001

OIL CONSERVATION DIVISION

Approved by:

Jim W. Brown
District II Supervisor

Title:

Approval Date: 7/22/08

Expiration Date: 7/22/10

Conditions of Approval:

Attached ☐

DISTRICT I
1825 N. FRENCH DR., HOBBS, NM 88240

State of New Mexico
Energy, Minerals and Natural Resources Department

Form C-102

DISTRICT II
1301 W. GRAND AVENUE, ARTESIA, NM 88210

OIL CONSERVATION DIVISION
1220 SOUTH ST. FRANCIS DR.
Santa Fe, New Mexico 87505

Revised October 12, 2005
Submit to Appropriate District Office
State Lease - 4 Copies
Fee Lease - 3 Copies

DISTRICT III
1000 Rio Brazos Rd., Aztec, NM 87410

DISTRICT IV
1220 S. ST. FRANCIS DR., SANTA FE, NM 87505

WELL LOCATION AND ACREAGE DEDICATION PLAT

☐ AMENDED REPORT

API Number	Pool Code 86480	Pool Name Turkey Track, Morrow (G)
Property Code 23904 OGR/D No. 4378	Property Name GIBLET STATE	Well Number 2
	Operator Name CHI OPERATING	Elevation 3424'

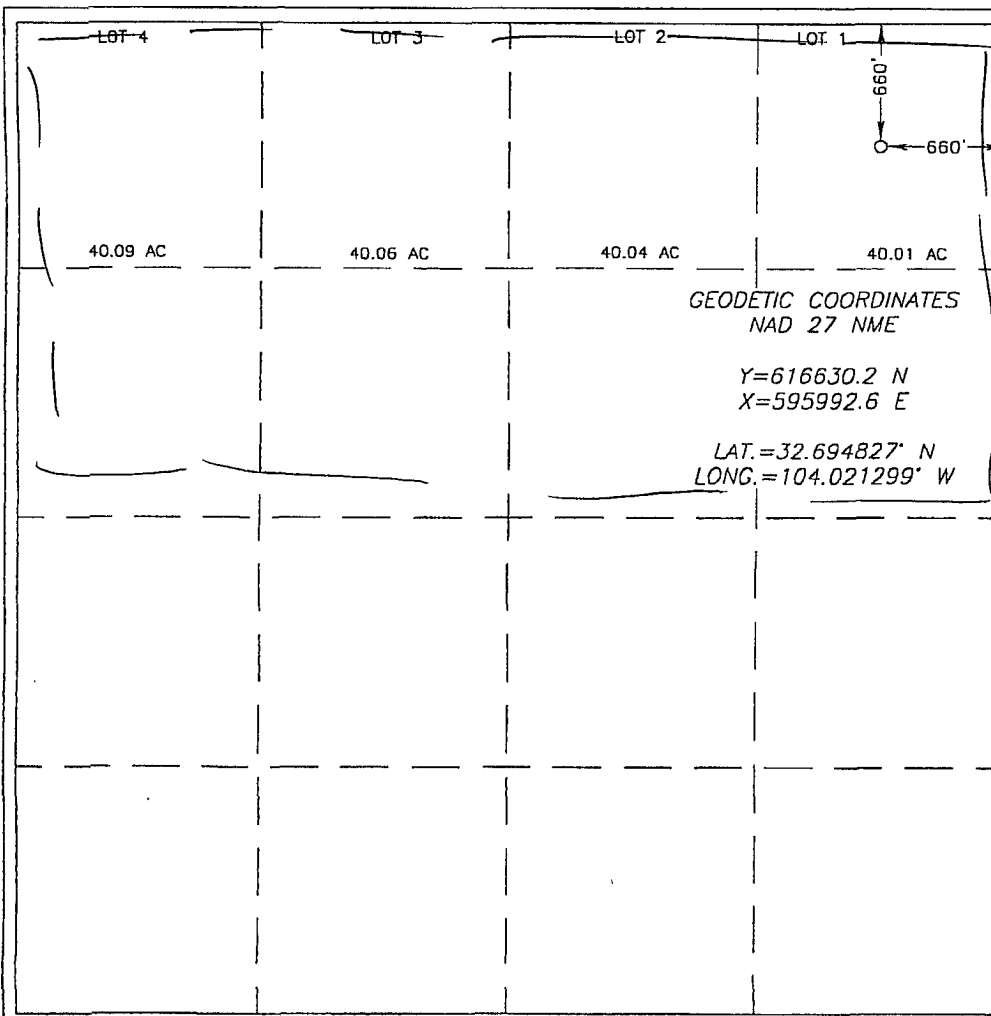
Surface Location

UL or lot No.	Section	Township	Range	Lot Idn	Feet from the	North/South line	Feet from the	East/West line	County
A	1	19-S	29-E		660	NORTH	660	EAST	EDDY

Bottom Hole Location If Different From Surface

UL or lot No.	Section	Township	Range	Lot Idn	Feet from the	North/South line	Feet from the	East/West line	County
Dedicated Acres 320	Joint or Infill	Consolidation Code	Order No.						

NO ALLOWABLE WILL BE ASSIGNED TO THIS COMPLETION UNTIL ALL INTERESTS HAVE BEEN CONSOLIDATED
OR A NON-STANDARD UNIT HAS BEEN APPROVED BY THE DIVISION



OPERATOR CERTIFICATION

I hereby certify that the information herein is true and complete to the best of my knowledge and belief, and that this organization either owns a working interest or unleased mineral interest in the land including the proposed bottom hole location or has a right to drill this well at this location pursuant to a contract with an owner of such mineral or working interest, or to a voluntary pooling agreement or a compulsory pooling order heretofore entered by the division.

Signature Pam Corbett Date 6/22/08
Printed Name

SURVEYOR CERTIFICATION

I hereby certify that the well location shown on this plat was plotted from field notes of actual surveys made by me or under my supervision, and that the same is true and correct to the best of my belief.

Date Surveyed JUNE 13, 2008 LA
Signature & Seal Ronald E. Edson Professional Surveyor
Certificate No. 3239 RONALD E. EDSON 3239