



July 28, 2008

HAND-DELIVERED

Mark E. Fesmire, P. E.
Director
Oil Conservation Division
New Mexico Department of Energy,
Minerals and Natural Resources
1220 South Saint Francis Drive
Santa Fe, New Mexico 87505

Re: Application of EOG Resources, Inc. to amend Administrative Order SD-2007-22 for Administrative Approval of the Simultaneous Dedication of the S/2 of Section 11, Township 16 South, Range 24 East, N.M.P.M., Eddy County, New Mexico to its proposed Brazos "B" 11 Fee Well No. 2H and the existing Brazos "B" 11 Fee Well No. 1H.

Dear Mr. Fesmire:

EOG Resources, Inc. seeks administrative approval to amend Administrative Order SD-2007-22 which approved the simultaneous dedication of a standard 320-acre gas spacing unit to the Brazos "B" 11 Fee Well No. 1H (API No. 30-015-34483) from a surface location 1730 feet from the South line and 660 feet from the East line to a bottomhole location 1880 feet from the South line and 660 feet from the West line of Section 11, Township 16 South, Range 24 East, NMPM and the Brazos B 11 Fee Well No. 2H (API No. 30-015-34482) as originally proposed to be drilled from a surface location 660 feet from the South line and 660 feet from the East line to a bottomhole location 760 feet from the South line and 660 feet from the West line of said Section 11.

EOG has moved the surface location of the Brazos "B" 11 Fee Well 2H at the surface owner's request. The surface owner has requested that EOG move its proposed surface location to accommodate the surface owner's future uses. EOG therefore has moved the surface location to 560 feet from the South line and 200 feet from the East line of Section 11, Township 16 South, Range 24 East, NMPM, Eddy County, New Mexico. The penetration point and the bottomhole location remain the same. **Exhibit A** is the revised C-102 showing the correct location for the well.

Therefore, EOG respectfully requests that Administrative Order SD-2007-22 be amended to reflect the change in the surface location for the Brazos "B" 11 Fee Well

Holland & Hart LLP

Phone (505) 988-4421 Fax (505) 983-6043 www.hollandhart.com

110 North Guadalupe Suite 1 Santa Fe, NM 87501 Mailing Address P.O. Box 2208 Santa Fe, NM 87504-2208

Aspen Billings Boise Boulder Cheyenne Colorado Springs Denver Denver Tech Center Jackson Hole Salt Lake City Santa Fe Washington, D.C. ☐

HOLLAND & HART



No. 2H at 560 feet from the South line and 200 feet from the East line and a bottomhole location 760 feet from the South line and 660 feet from the West line of Section 11, Township 16 South, Range 24 East, NMPM, Eddy County, New Mexico.

Your attention to this application is appreciated.

Sincerely,

Ocean Munds-Dry

Ocean Munds-Dry
Attorney for EOG Resources, Inc.

Enclosures

District I
1625 N. French Dr., Hobbs, NM 88240
District II
1301 W. Grand Avenue, Artesia, NM 88210
District III
1000 Rio Brazos Rd., Aztec, NM 87410
District IV
1220 S. St. Francis Dr., Santa Fe, NM 87505

State of New Mexico
Energy, Minerals & Natural Resources Department
OIL CONSERVATION DIVISION
1220 South St. Francis Dr.
Santa Fe, NM 87505

Form C-102
Revised October 12, 2005
Submit to Appropriate District Office
State Lease- 4 Copies
Fee Lease- 3 Copies
☐ AMENDED REPORT

WELL LOCATION AND ACREAGE DEDICATION PLAT

API Number 30-015-34482	Pool Code 75260	Pool Name Loftonwood Creek ; We West (Gas)
Property Code	Property Name BRAZOS "B" 11 FEE	Well Number 2H
OGRID No. 7377	Operator Name EOG RESOURCES, INC.	Elevation 3569.7'

Surface Location

UL or lot no.	Section	Township	Range	Lot Idn	Feet from the	North/South line	Feet from the	East/West line	County
P	11	16 SOUTH	24 EAST, N.M.P.M.		560'	SOUTH	200'	EAST	EDDY

Bottom Hole Location If Different From Surface

UL or lot no.	Section	Township	Range	Lot Idn	Feet from the	North/South line	Feet from the	East/West line	County
M	11	16 SOUTH	24 EAST, N.M.P.M.		760'	SOUTH	660'	WEST	EDDY

Dedicated Acres 320	Joint or Infill	Consolidation Code	Order No.
-------------------------------	-----------------	--------------------	-----------

No allowable will be assigned to this completion until all interests have been consolidated or a non-standard unit has been approved by the division.

OPERATOR CERTIFICATION

I hereby certify that the information contained herein is true and complete to the best of my knowledge and belief, and that this organization either owns a working interest or unleased mineral interest in the land including the proposed bottom hole location or has a right to drill this well at this location pursuant to a contract with an owner of such a mineral or working interest, or to a voluntary pooling agreement or a compulsory pooling order heretofore entered by the division.

Donny G. Glanton 7/2/08
Signature Date

Donny G. Glanton
Printed Name

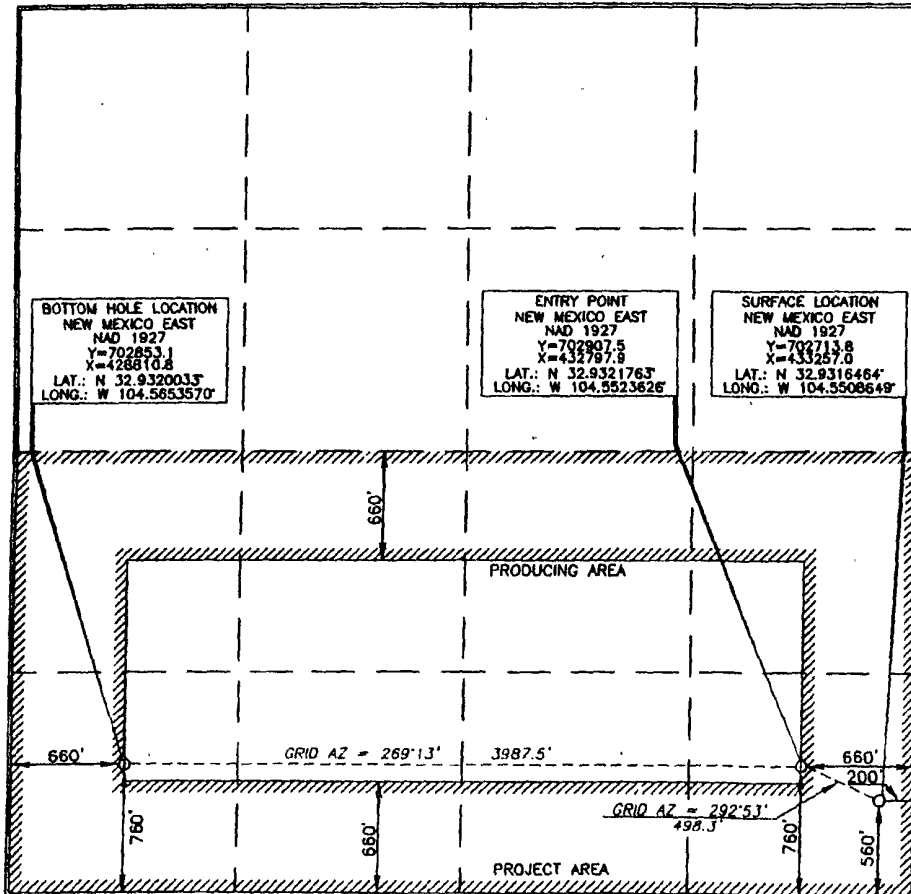
SURVEYOR CERTIFICATION

I hereby certify that the well location shown on this plat was located from field notes and actual surveys made by me or under my supervision and that the same is true and correct to the best of my knowledge.

15079
Date of Survey **July 2, 2008**

Tommy J. Paul 7/3/2008
Signature and Seal of Professional Surveyor
Certificate Number **15079**

WO# 080702WL (KA)



EXHIBIT

A