

District I
1625 N French Dr , Hobbs, NM 88240
District II
13 01 W Grand Avenue, Artesia, NM 88210
District III
1 000 Rio Brazos Road, Aztec, NM 87410
District IV
1220 S. St. Francis Dr , Santa Fe, NM 87505



State of New Mexico
Energy Minerals and Natural Resources

AUG 11 2008

Form C-101
June 16, 2008

OCC-ARTESIA

Submit to appropriate District Office

Oil Conservation Division
1220 South St. Francis Dr.
Santa Fe, NM 87505

☐ AMENDED REPORT

APPLICATION FOR PERMIT TO DRILL, RE-ENTER, DEEPEN, PLUGBACK, OR ADD A ZONE

Operator Name and Address B C Operating, Inc., Box 50820, Midland, TX 79710		GRID Number 160825
		API Number 30- 015 - 36552
Property Code 35684	Property Name Rustler Bluff	Well No. 2
Proposed Pool 1 Willow Lake, Delaware		Proposed Pool 2

7 Surface Location

UL of lot no K	Section 6	Township 25-S	Range 29-E	Lot Idn	Feet from the 1890	North/South line South	Feet from the 1887	East/West line West	County Eddy
-------------------	--------------	------------------	---------------	---------	-----------------------	---------------------------	-----------------------	------------------------	----------------

8 Proposed Bottom Hole Location If Different From Surface

UL of lot no	Section	Township	Range	Lot Idn	Feet from the	North/South line	Feet from the	East/West line	County
--------------	---------	----------	-------	---------	---------------	------------------	---------------	----------------	--------

Additional Well Information

Work Type Code N	Well Type Code O	Cable/R tary R	Lease Type Code State	Ground Level Elevation 2903'
Multiple No	Proposed Depth 5200'	Formation Delaware	Contractor TBA	Spud Date 8-20-08

21 Proposed Casing and Cement Program

Hole Size	Casing Size	Casing weight/foot	Setting Depth	Sacks of Cement	Estimated TOC
12 1/4"	8 5/8"	32#	660'	600 sx	surface
7 7/8"	5 1/2"	15.5#	5200'	700 sx	1000' Surface

' Describe the proposed program. If this application is to DEEPEN or PLUG BACK, give the data on the present productive zone and proposed new productive zone.
Describe the blowout prevention program, if any. Use additional sheets if necessary.

Mud Program: 0 to 660'
FW/Spud Mud
8.6 to 9.2 ppg
660' to 5200'
Gel/Starch
10 to 10.1 ppg

Bope Program: A 5000# bope will be installed on
the 8-5/8" casing and tested daily.

" I hereby certify that the information given above is true and complete to the best
of my knowledge and belief

Signature

OIL CONSERVATION DIVISION

Approved by

District II Supervisor

Title

Approval Date:

8/12/08

Expiration Date:

8/22/10

NOTE: NEW PIT RULE
19-15-17 NMAC PART 17
A form C-144 must be approved
before starting drilling operations.

Date: 8-4-08

Phone 432-684-6381/214-762-0830

Conditions of Approval Attached ☐

✓
R40

DISTRICT I
1625 N. French Dr., Hobbs, NM 88240

State of New Mexico

Form C-102

DISTRICT II
1301 W. Grand Avenue, Artesia, NM 88210

Energy, Minerals, and Natural Resources Department

Revised October 12, 2005

Submit to Appropriate District Office

OIL CONSERVATION DIVISION

State Lease - 4 copies

Fee Lease - 3 copies

DISTRICT III
1000 Rio Brazos Rd., Aztec, NM 87410

1220 South St. Francis Dr.

Santa Fe, New Mexico 87505

DISTRICT IV
1220 S. St. Francis Dr., Santa Fe, NM 87505

☐ AMENDED REPORT

WELL LOCATION AND ACREAGE DEDICATION PLAT

¹ API Number 30-015	² Pool Code 64453	³ Pool Name Willow Lake; Delaware
⁴ Property Code 35684	⁵ Property Name RUSTLER BLUFF	⁶ Well Number 2
⁷ OGRID No. 160825	⁸ Operator Name BC OPERATING, INC.	⁹ Elevation 2903'

¹⁰ Surface Location

UL or lot no. K	Section 6	Township 25 SOUTH	Range 29 EAST, N.M.P.M.	Lot Idn	Feet from the 1890'	North/South line SOUTH	Feet from the 1887'	East/West line WEST	County EDDY
--------------------	--------------	----------------------	----------------------------	---------	------------------------	---------------------------	------------------------	------------------------	----------------

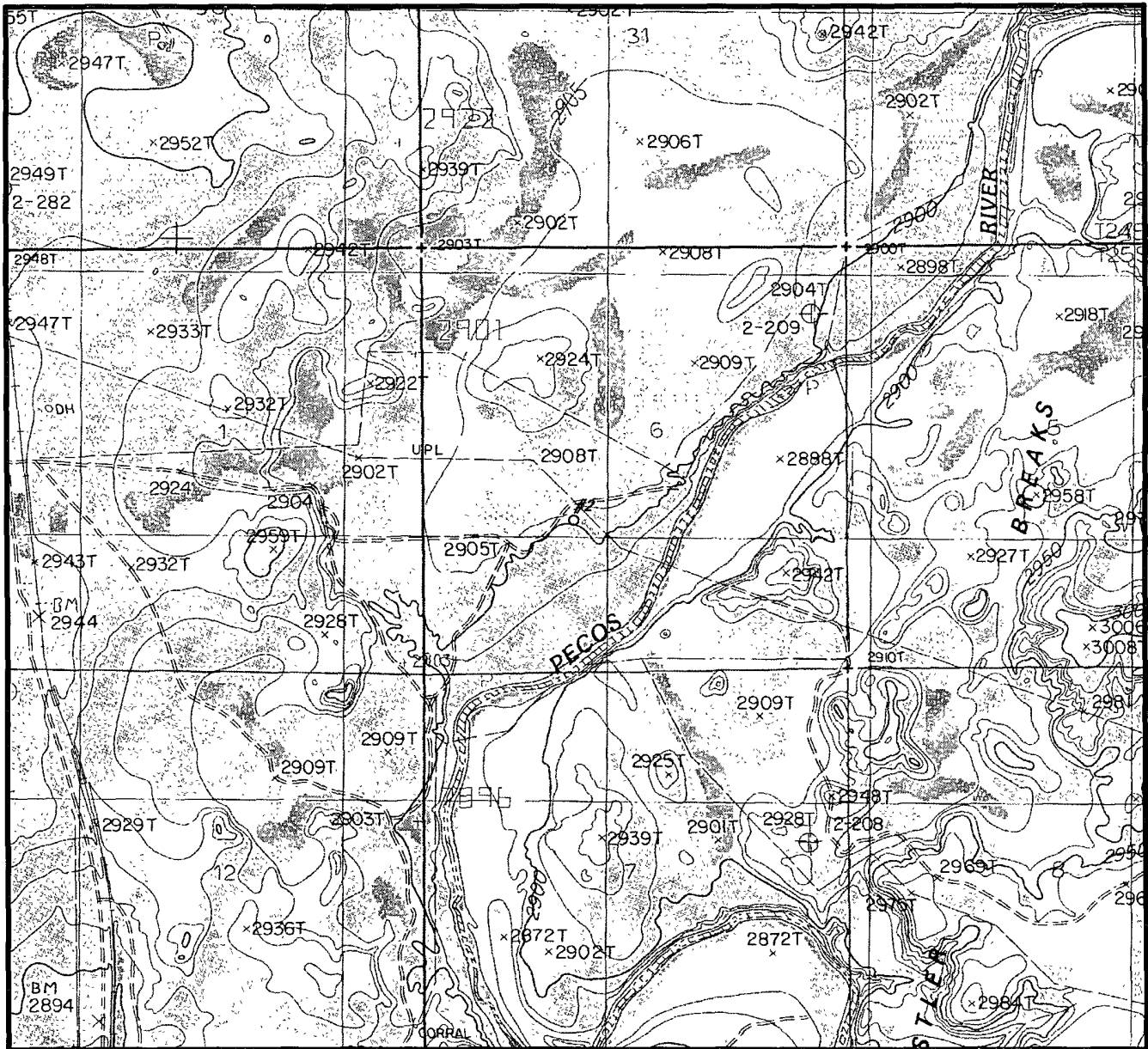
¹¹ Bottom Hole Location If Different From Surface

UL or lot no. 40	Section	Township	Range	Lot Idn	Feet from the	North/South line	Feet from the	East/West line	County
¹²	¹³		¹⁴ Consolidation Code	¹⁵ Order No.					

NO ALLOWABLE WELL BE ASSIGNED TO THIS COMPLETION UNTIL ALL INTERESTS HAVE BEEN CONSOLIDATED OR A NON-STANDARD UNIT HAS BEEN APPROVED BY THE DIVISION

<div><p>¹⁶</p><p>NAD 27 NM E ZONE X = 595208 Y = 420969 LAT.: N 32.1569860 LONG.: W 104.0256803</p></div>	<p>OPERATOR CERTIFICATION</p> <p><i>I hereby certify that the information contained herein is true and complete to the best of my knowledge and belief, and that this organization either owns a working interest or unleased mineral interest in the land including the proposed bottom hole location or has a right to drill this well at this location pursuant to a contract with an owner of such a mineral or working interest, or to a voluntary pooling agreement or a compulsory pooling order heretofore entered by the division.</i></p> <p>7-8-08 Date Signature Ann E. Ritchie Printed Name</p> <p>SURVEYOR CERTIFICATION</p> <p><i>I hereby certify that the well location shown on this plat was plotted from field notes of actual survey made by me or under my supervision, and that the same is true and correct to the best of my belief.</i></p> <p>MAY 13, 2008 Date of Survey Signature and Seal of Professional Surveyor Michael Blake Brown R.P.S. #18329 JOB # 135663 / 24 NE / J.A.F.</p>
--	--

LOCATION & ELEVATION VERIFICATION MAP



SCALE : 1" = 2000'

CONTOUR INTERVAL 5'

SECTION 6 TWP 25-S RGE 29-E

SURVEY NEW MEXICO PRINCIPAL MERIDIAN

COUNTY EDDY STATE NM

DESCRIPTION 1890' FSL & 1887' FWL

ELEVATION 2903'

OPERATOR **BC OPERATING, INC.**

LEASE RUSTLER BLUFF #2

U.S.G.S. TOPOGRAPHIC MAP

MALAGA QUADRANGLE, NEW MEXICO

SCALED LAT. LAT.: N 32.1569860

LONG. LONG.: W 104.0256803

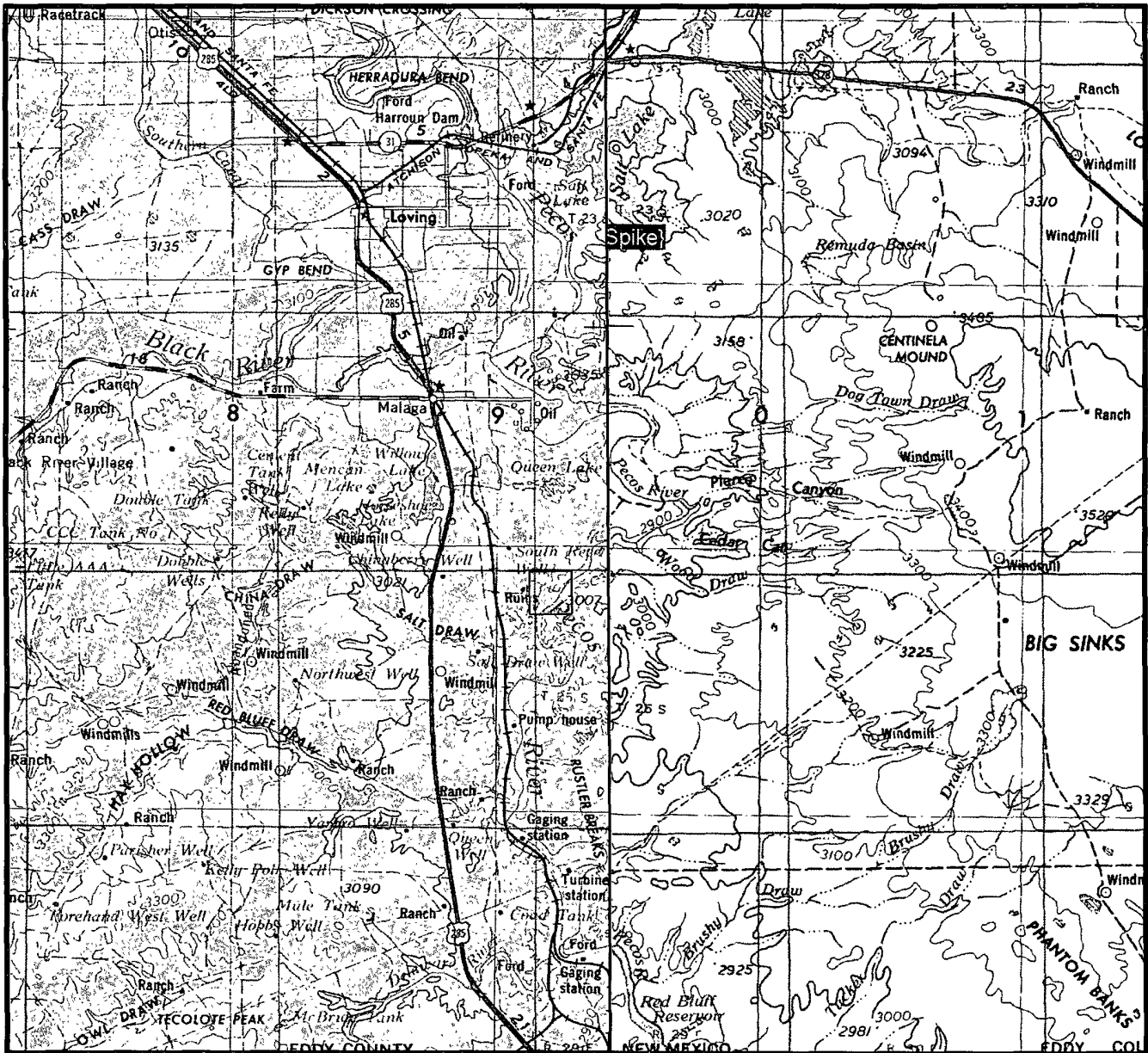


TOPOGRAPHIC LAND SURVEYORS

Surveying & Mapping for the Oil & Gas Industry

2903 N. BIG SPRING
MIDLAND, TX. 79705
(800) 767-1653

VICINITY MAP



SECTION 6 TWP 25-S RGE 29-E

SURVEY NEW MEXICO PRINCIPAL MERIDIAN

COUNTY EDDY STATE NM

DESCRIPTION 1890' FSL & 1887' FWL

OPERATOR BC OPERATING, INC

LEASE RUSTLER BLUFF #2

DISTANCE & DIRECTION FROM MALAGA GO SOUTH

± 4.0 MI. ON HWY. 285 THENCE EAST ± 1.0 MI. ON

LSE. RD. THENCE SOUTH ± 0.5 MI. THENCE EAST

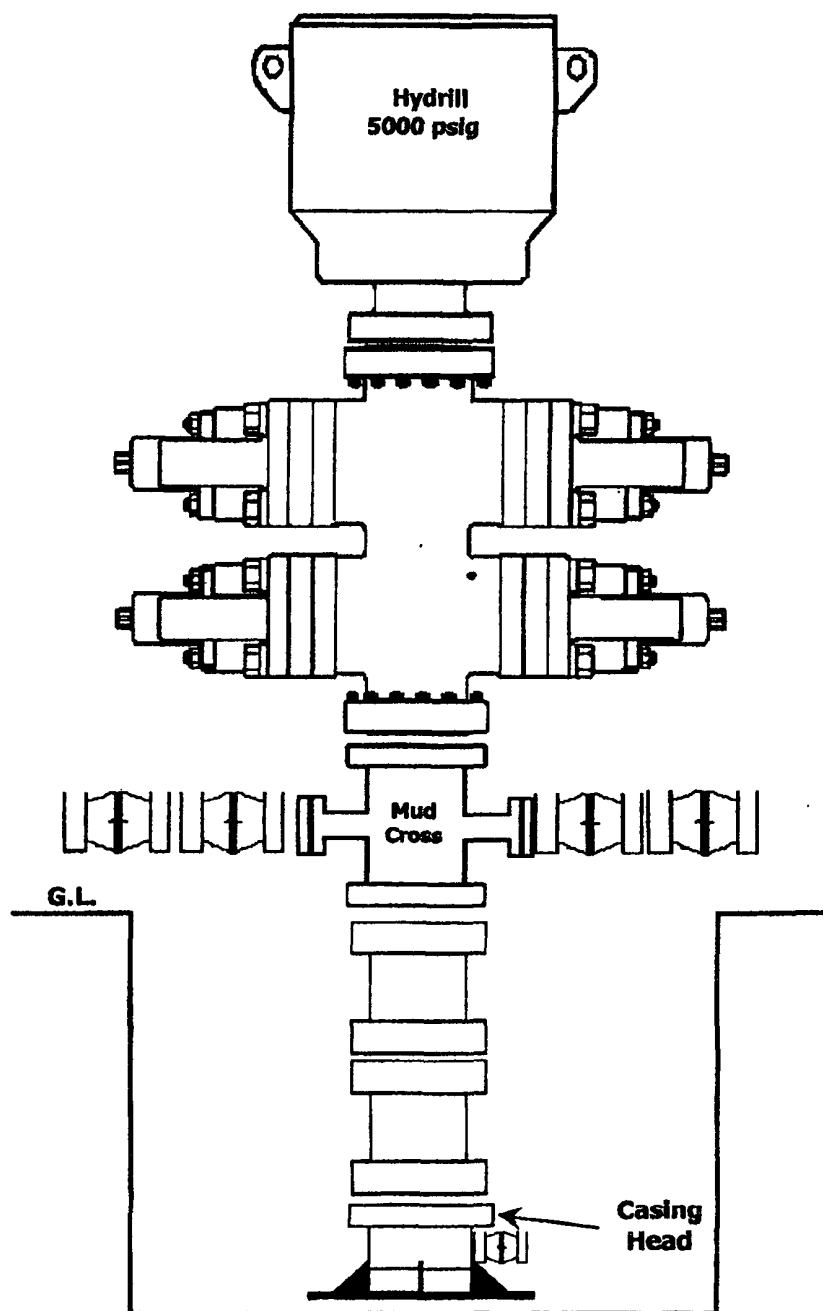
± 1.4 MI. TO A POINT ± 200' NORTH OF LOCATION.



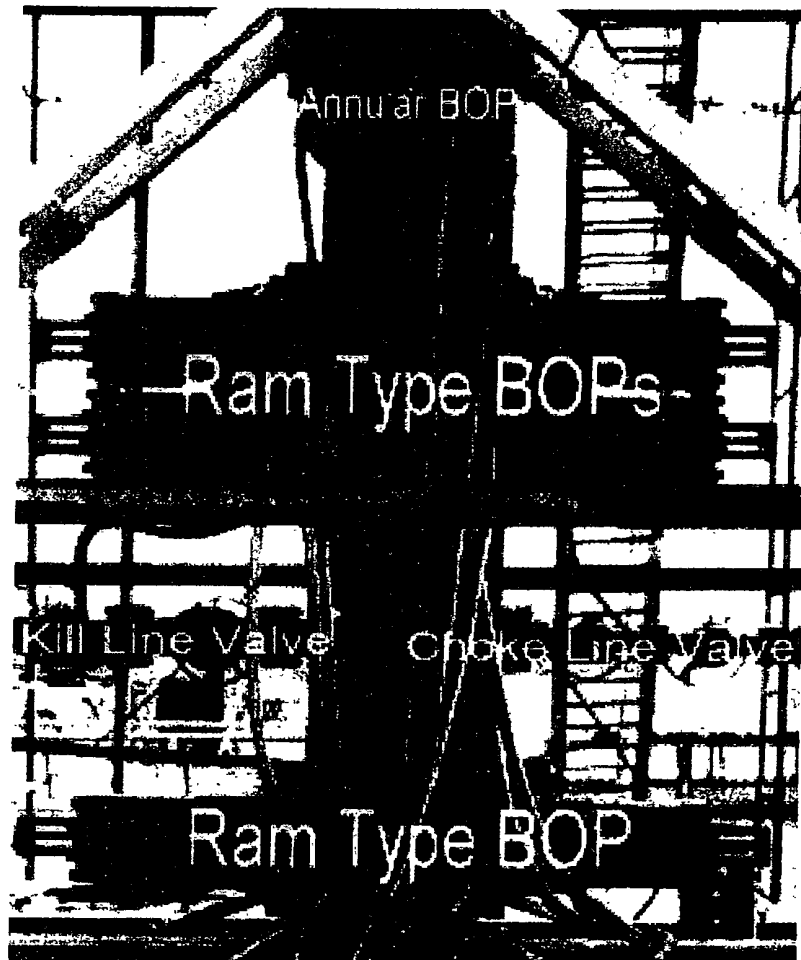
TOPOGRAPHIC LAND SURVEYORS

Surveying & Mapping for the Oil & Gas Industry

2903 N. BIG SPRING
MIDLAND, TX. 79705
(800) 767-1653



**Example of Blowout Preventer
Tested to 5,000#**



3 M Choke Manifold

