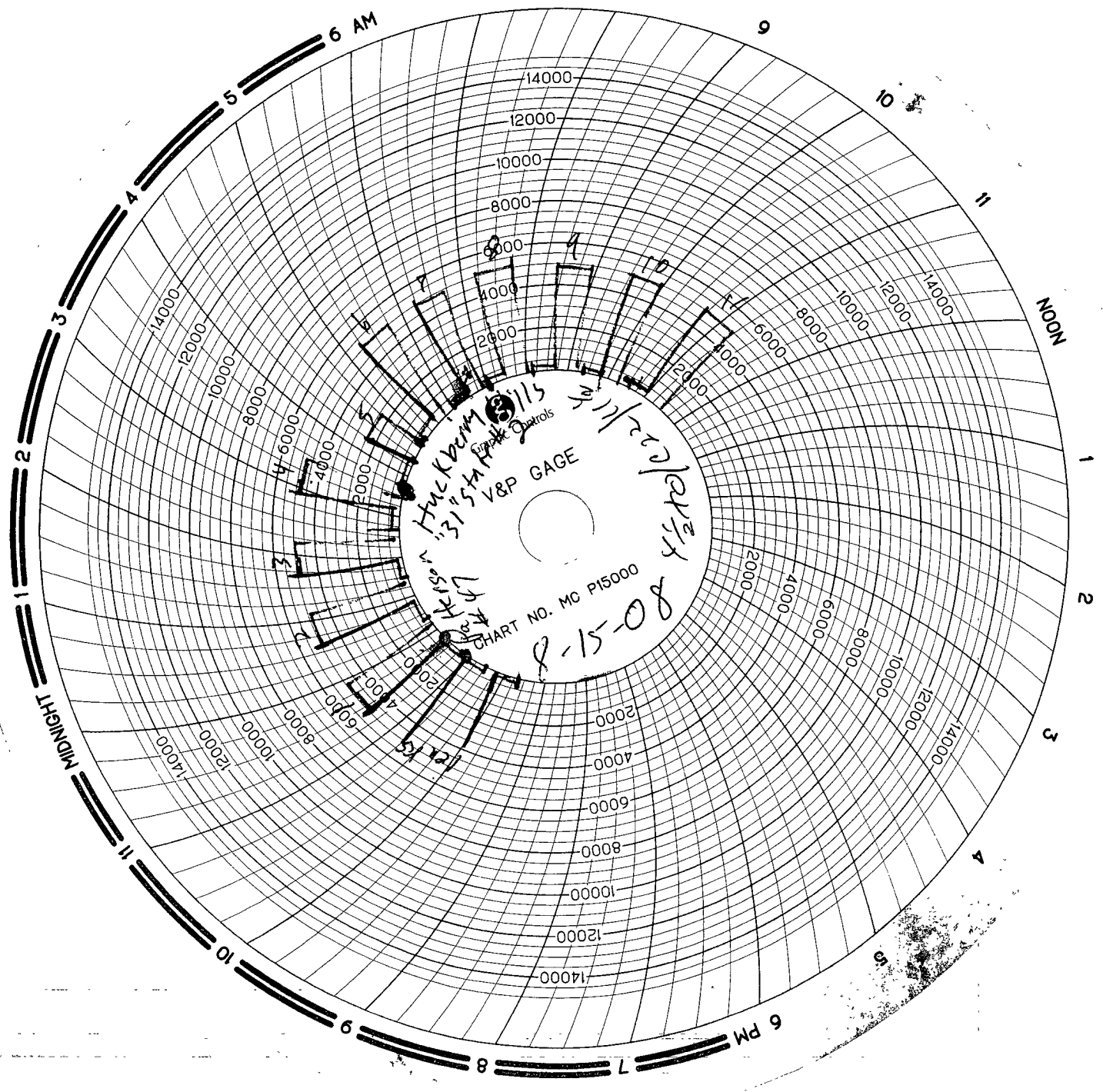


7 PRINTED IN U.S.A. 8



Grand Junction, CO
970-241-4540

Lovington, NM
575-396-4540

44-38861-**B** 9132

Company Mewbourne oil company

Date 8-13-08

Start Time 10:00 ☒ am ☐ pm

Lease Huckberry Hills "31" state #2

County Eddy State NM

Company Man

Wellhead Vendor

Tester Robert W. Meyer

Drig. Contractor W. H. HANSON, U.I.L.

Rig # 47

Tool Pusher Murphy

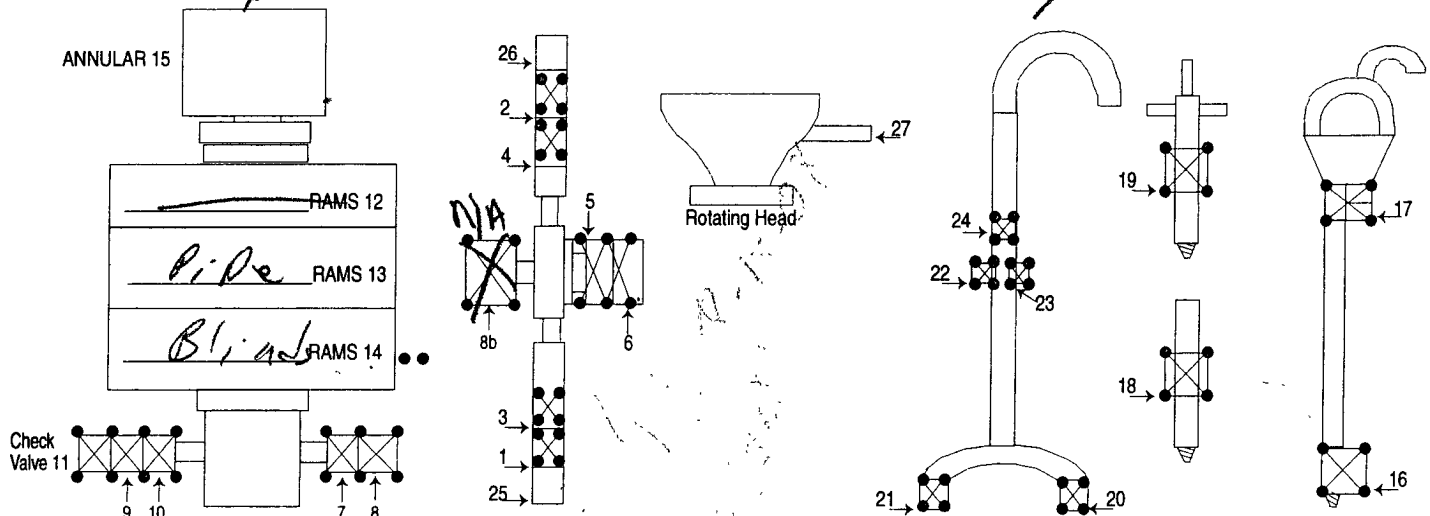
Plug Type C-22

Plug Size 1/2

Drill Pipe Size 4 1/2 X 10

Casing Valve Opened Yes

Check Valve Open Yes

[illegible]

8.0 HR @ \$12.00⁰⁰
17.0 HR @ 1.00⁰⁰ = \$1,700.00
Mileage 168.0 @ 1.50 = 252.00

Mileage 168.0 @ 9.50 = 252.00

MASTER PRINTERS 575.396.3661

SUB TOTAL 83,152.00
TAX 169.42
TOTAL 83,321.42

MAN WELDING SERVICES, INC

Company Mawbaine Oil Company Date 8-15-08
Lease Hackberry Hills "21" state #2 County Eddy
Drilling Contractor Patterson UTI Plug & Drill Pipe Size 1 1/2 / 4 X 80

Accumulator Function Test - OO&GO#2

To Check - USABLE FLUID IN THE NITROGEN BOTTLES (III.A.2.c.i. or ii or iii)

- Make sure all rams and annular are open and if applicable HCR is closed.
- Ensure accumulator is pumped up to working pressure! (Shut off all pumps)
- 1. Open HCR Valve. (If applicable)
- 2. Close annular.
- 3. Close **all** pipe rams.
- 4. Open one set of the pipe rams to simulate closing the blind ram.
- 5. For 3 ram stacks, open the annular to achieve the 50+ % safety factor. (5M and greater systems).
- 6. Record remaining pressure 1900 psi. Test Fails if pressure is lower than required.
- a. {950 psi for a 1500 psi system} b. {1200 psi for a 2000 & 3000 psi system}
- 7. If annular is closed, open it at this time and close HCR. ✓

To Check - PRECHARGE ON BOTTLES OR SPHERICAL (III.A.2.d.)

- Start with manifold pressure at, or above, maximum acceptable pre-charge pressure:
 - a. {800 psi for a 1500 psi system} b. {1100 psi for 2000 and 3000 psi system}
- 1. Open bleed line to the tank, slowly. (gauge needle will drop at the lowest bottle pressure)
- 2. Close bleed line. Barely bump electric pump and see what pressure the needle jumps up to.
- 3. Record pressure drop 1600 psi. Test fails if pressure drops below minimum.
- Minimum: a. {700 psi for a 1500 psi system} b. {900 psi for a 2000 & 3000 psi system}

To Check - THE CAPACITY OF THE ACCUMULATOR PUMPS (III.A.2.f.)

- Isolate the accumulator bottles or spherical from the pumps & manifold.
- Open the bleed off valve to the tank, {manifold psi should go to 0 psi} close bleed valve ✓
- 1. Open the HCR valve, {if applicable}
- 2. Close annular
- 3. With **pumps** only, time how long it takes to regain the required manifold pressure.
- 4. Record elapsed time 1'00. Test fails if it takes over 2 minutes.
- a. {950 psi for a 1500 psi system} b. {1200 psi for a 2000 & 3000 psi system}

ACCUMULATOR FUNCTION TEST

DATE: 8-15-08

COMPANY Newbourne Oil

WELL NAME Huckberry Hills "31" state #2

Record on IADC Books and YPC Morning Report the following data:

Beginning Charge Pressure on the Accumulator Manifold 2750 PSI

Time to Close Pipe Rams 3.0 SEC

Pressure on Accumulator Manifold 2650 PSI

Time to Close HCR Valve (if applicable) 4.0 SEC

Pressure on Accumulator Manifold ~~_____~~ PSI

Time to Close Pipe Rams (when applicable) ~~_____~~ SEC

Pressure on Accumulator Manifold 2650 PSI

Time to Close Annular 4.0 Min/Sec

Pressure on the Accumulator Manifold 2500 PSI

Open Pipe Rams, Blind Rams, HCR Valve, Annular
Record Accumulator Manifold Pressure 2300 PSI

Turn on Air & Electric Pumps
Record time to recharge (until pump kicks off) 1:15 Min/Sec

Record Manifold Pressure 2100 PSI

Record the same information when testing the Blind Rams while out of the hole on trips.