

UNITED STATES
DEPARTMENT OF THE INTERIOR
BUREAU OF LAND MANAGEMENT

OCD-ARTESIA

8-15-08
FORM APPROVED
OMB NO. 1004-0137
Expires. March 31, 2007

WELL COMPLETION OR RECOMPLETION REPORT AND LOG

1a. Type of Well ☒ Oil Well ☐ Gas Well ☐ Dry ☐ Other
b. Type of Completion ☒ New Well ☐ Work Over ☐ Deepen ☐ Plug Back ☐ Drill Resvr.
Other _____

2 Name of Operator
BEPCO, L.P.

3 Address
P.O. BOX 2760 MIDLAND TX 79702-2760

3 a Phone No (Include area code)
(432)683-2277

4 Location of Well (Report location clearly and in accordance with Federal requirements)*

At Surface UL G , 1980' FNL, 1980' FEL LAT N32.219389, LONG W103.935917

At top prod interval reported below SAME

At total depth SAME

14 Date Spudded
03/30/2008

15. Date T D. Reached
04/17/2008

16 Date Completed
☐ D & A ☒ Ready to Prod
05/15/2008

17. Elevations (DF, RKB, RT, GL)*
3100'

18 Total Depth MD 9280'
TVD

19 Plug Back T D MD 9184'
TVD

20 Depth Bridge Plug Set MD
TVD

21 Type of Electric & Other Mechanical Logs Run (Submit copy of each)
GR-CLN-LDT; GR-AIT

22 Was well cored? ☒ No ☐ Yes (Submit analysis)
Was DST run? ☒ No ☐ Yes (Submit analysis)
Directional Survey? ☒ No ☐ Yes (Submit copy)

23 Casing and Liner Record (Report all strings set in well)

Hole Size	Size/Grade	Wt (#/ft)	Top (MD)	Bottom (MD)	Stage Cementer Depth	No. of Sks & Type of Cement	Slurry Vol (BBL)	Cement Top*	Amount Pulled
12-1/4"	8-5/8"	32#	0'	537"		500 sxs		0' CIRC.	
7-7/8"	5-1/2"	17#	0'	7390'	5014'	600 sxs stg. 1		5014' "	
						1380 sxs stg. 2		CIRC.	
								0' CIRC.	

24 Tubing Record

Size	Depth Set (MD)	Packer Depth (MD)	Size	Depth Set (MD)	Packer Depth (MD)	Size	Depth Set (MD)	Packer Depth (MD)
2-7/8"	8530' SN	7948' TAC						

25 Producing Intervals

26 Perforation Record

Formation	Top	Bottom	Perforated Interval	Size	No Holes	Perf. Status
A) BONE SPRINGS	8122'	9160'	8127-8238'	0.38	20	PRODUCING
B)			8820-9147'	0.38	20	PRODUCING
C)						
D)						

27 Acid, Fracture, Treatment, Cement Squeeze, Etc

Depth Interval	Amount and Type of Material
8127'-8238'	FRACTURED FORMATION W/ 135652 GALS PW & 14134 #'S 14/30 LITEPROP
8820-9147'	FRACTURED FORMATION W/ 161348 GALS PW & 8193 #'S 14/30 LITEPROP

28. Production - Interval A

Date First Produced	Test Date	Hours Tested	Test Production	Oil BBL	Gas MCF	Water BBL	Oil Gravity Corr API	Gas Gravity	Production Method
05/15/08	05/24/08	24	→	100	612	527			PUMPING
Choice Size	Tbg Press Flwg SI	Csg Press	24 Hr Rate	Oil BBL	Gas MCF	Water BBL	Gas Oil Ratio	Well Status	
24/64"	250	350	→				6120	PRODUCING	

Production - Interval B

Date First Produced	Test Date	Hours Tested	Test Production	Oil BBL	Gas MCF	Water BBL	Oil Gravity Corr API	Gas Gravity	Production Method
			→						
Choke Size	Tbg Press Flwg SI	Csg Press	24 Hr Rate	Oil BBL	Gas MCF	Water BBL	Gas Oil Ratio	Well Status	
			→						

ACCEPTED FOR RECORD

JUL 5 2008

JERRY FANT
PETROLEUM GEOLOGIST

28b. Production - Interval C

Date First Produced	Test Date	Hours Tested	Test Production →	Oil BBL	Gas MCF	Water BBL	Oil Gravity Corr API	Gas Gravity	Production Method
Choke Size	Tbg. Press Flwg. SI	Csg Press	24 Hr Rate →	Oil BBL	Gas MCF	Water BBL	Gas Oil Ratio	Well Status	

28c. Production - Interval D

Date First Produced	Test Date	Hours Tested	Test Production →	Oil BBL	Gas MCF	Water BBL	Oil Gravity Corr API	Gas Gravity	Production Method
Choke Size	Tbg. Press Flwg. SI	Csg Press	24 Hr Rate →	Oil BBL	Gas MCF	Water BBL	Gas Oil Ratio	Well Status	

29 Disposition of Gas (Sold, used for fuel, vented, etc)
SOLD

30 Summary of Porous Zones (Include Aquifers).

Show all important zones or porosity and contents thereof. Cored intervals and all drill-stem tests, including depth interval tested, cushion used, time tool open, flowing and shut-in pressures and recoveries

31. Formation (Log) Markers

Formation	Top	Bottom	Descriptions, Contents, etc	Name	Top
					Meas Depth
				RUSTLER	284'
				T/SALT	548'
				B/SALT	3092'
				LAMAR	3301'
				CHERRY CANYON	4207'
				LO. CHERRY CANYON	5416'
				BRUSHY CANYON	5456'
				LO. BRUSHY CANYON	6818'
				BONE SPRING LIME	7070'
				AVALON SAND	7165'
				FIRST BONE SPRING SAND	8077'


32 Additional remarks (include plugging procedure):

33 Indicate which items have been attached by placing a check in the appropriate boxes

☒ Electrical/Mechanical Logs (1 full set req'd.)
 ☐ Geological Report
 ☐ DST Report
 ☐ Directional Survey
☐ Sundry Notice for plugging and cement verification
☐ Core Analysis
☒ Other **Inclination Report**

34 I hereby certify that the foregoing and attached information is complete and correct as determined from all available records (see attached instructions)*

Name (please print) ANN MOORE Title PRODUCTION CLERK

Signature  Date 06/12/2008

Title 18 U.S.C. Section 101 and Title 43 U.S.C. Section 1212, make it a crime for any person knowingly and willfully to make to any department or agency of the United States and false, fictitious or fraudulent statements or representations as to any matter within its jurisdiction.

DISTRICT I

1625 N. French Dr., Hobbs, NM 88240

DISTRICT II

1301 W. Grand Avenue, Artesia, NM 88210

DISTRICT III

1000 Rio Brazos Rd., Artec, NM 87410

DISTRICT IV

1220 S. St. Francis Dr., Santa Fe, NM 87505

State of New Mexico
Energy, Minerals and Natural Resources Department

OIL CONSERVATION DIVISION

1220 South St. Francis Dr.
Santa Fe, New Mexico 87505

Form C-102

Revised October 12, 2005

Submit to Appropriate District Office

State Lease - 4 Copies

Fee Lease - 3 Copies

☐ AMENDED REPORT

WELL LOCATION AND ACREAGE DEDICATION PLAT

API Number 30-015-35137	Pool Code #A 96473	Pool Name Pierce Crossing (Bone Spring)
Property Code 001796	Property Name POKER LAKE UNIT	Well Number 276
OGRID No. 001801	Operator Name BEPCO, L.P.	Elevation 3100'

Surface Location

UL or lot No.	Section	Township	Range	Lot Idn	Feet from the	North/South line	Feet from the	East/West line	County
G	13	24 S	29 E		1980	NORTH	1980	EAST	EDDY

Bottom Hole Location If Different From Surface

UL or lot No.	Section	Township	Range	Lot Idn	Feet from the	North/South line	Feet from the	East/West line	County
Dedicated Acres 40	Joint or Infill N	Consolidation Code	Order No.						

NO ALLOWABLE WILL BE ASSIGNED TO THIS COMPLETION UNTIL ALL INTERESTS HAVE BEEN CONSOLIDATED
OR A NON-STANDARD UNIT HAS BEEN APPROVED BY THE DIVISION

<p>Diagram showing a well location within a 1980' x 1980' area. The well is located at the intersection of 3093.3' and 3102.0' from the top and 3093.6' and 3103.6' from the left. The area is divided into four quadrants with acreages: 159.47 ACRES (top-left), 159.65 ACRES (top-right), 159.65 ACRES (bottom-left), and 159.79 ACRES (bottom-right). The well location is marked with a dot and labeled with coordinates: LAT - N32°13'09.8" LONG - W103°56'09.3" (NAD-83).</p>				<p>OPERATOR CERTIFICATION</p> <p>I hereby certify that the information contained herein is true and complete to the best of my knowledge and belief, and that this organization either owns a working interest or unleased mineral interest in the land including the proposed bottom hole location pursuant to a contract with an owner of such a mineral or working interest, or to a voluntary pooling agreement or a compulsory pooling order heretofore entered by the division.</p> <p><i>William R. Dannels</i> Signature 8/7/06 Date</p> <p>W.R. Dannels Printed Name</p>	
<p>SURVEYOR CERTIFICATION</p> <p>I hereby certify that the well location shown on this plat was plotted from field notes of actual surveys made by me or under my supervision, and that the same is true and correct to the best of my belief.</p> <p>APPROVED JUL 20, 2006</p> <p>Date Surveyed JUL 20, 2006</p> <p>Signature & Seal of Professional Surveyor <i>[Signature]</i></p> <p>Professional Surveyor 7977</p> <p>Certificate No. Gary L. Jones 7977</p> <p>BASIN SURVEYS</p>					

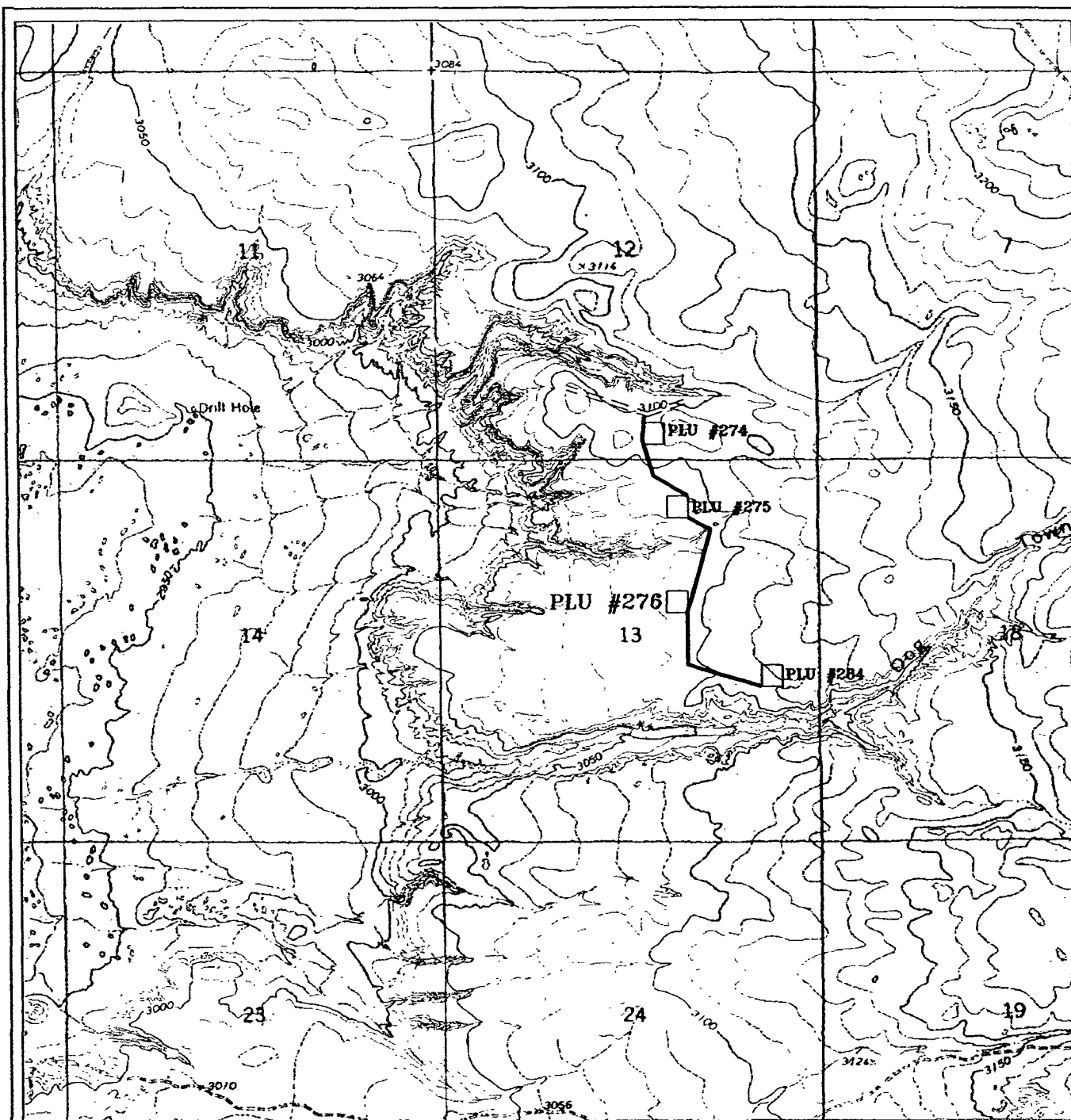
YATES LEASE ROAD



FROM THE JUNCTION OF CO. RD. 793 (RAWHIDE) AND
STATE HWY 128, GO SOUTH ON CO. RD. 793 FOR
APPROX. 7.8 MILES PAST WATER TANK; THENCE WEST
ON LEASE ROAD FOR 1.0 MILE; THENCE SOUTH BY
SOUTHWEST 0.7 MILE; TO THE PROPOSED LEASE
ROAD AND WELL LOCATION FOR P.L.U. 274.

REF: POKER LAKE UNIT #276 / WELL PAD AND TOPO
THE POKER LAKE UNIT #276 LOCATED 1980' FROM
THE NORTH LINE AND 1980' FROM THE EAST LINE OF
SECTION 13, TOWNSHIP 24 SOUTH, RANGE 29 EAST,
N.M.P.M., EDDY COUNTY, NEW MEXICO.

Sheet 1 of 1 Sheets



POKER LAKE UNIT #276

Located at 1980' FNL and 1980' FEL
 Section 13, Township 24 South, Range 29 East,
 N.M.P.M., Eddy County, New Mexico.

**basin
surveys**

focused on excellence
in the oilfield

P.O. Box 1786
 1120 N. West County Rd.
 Hobbs, New Mexico 88241
 (505) 393-7316 - Office
 (505) 392-3074 - Fax
 basinsurveys.com

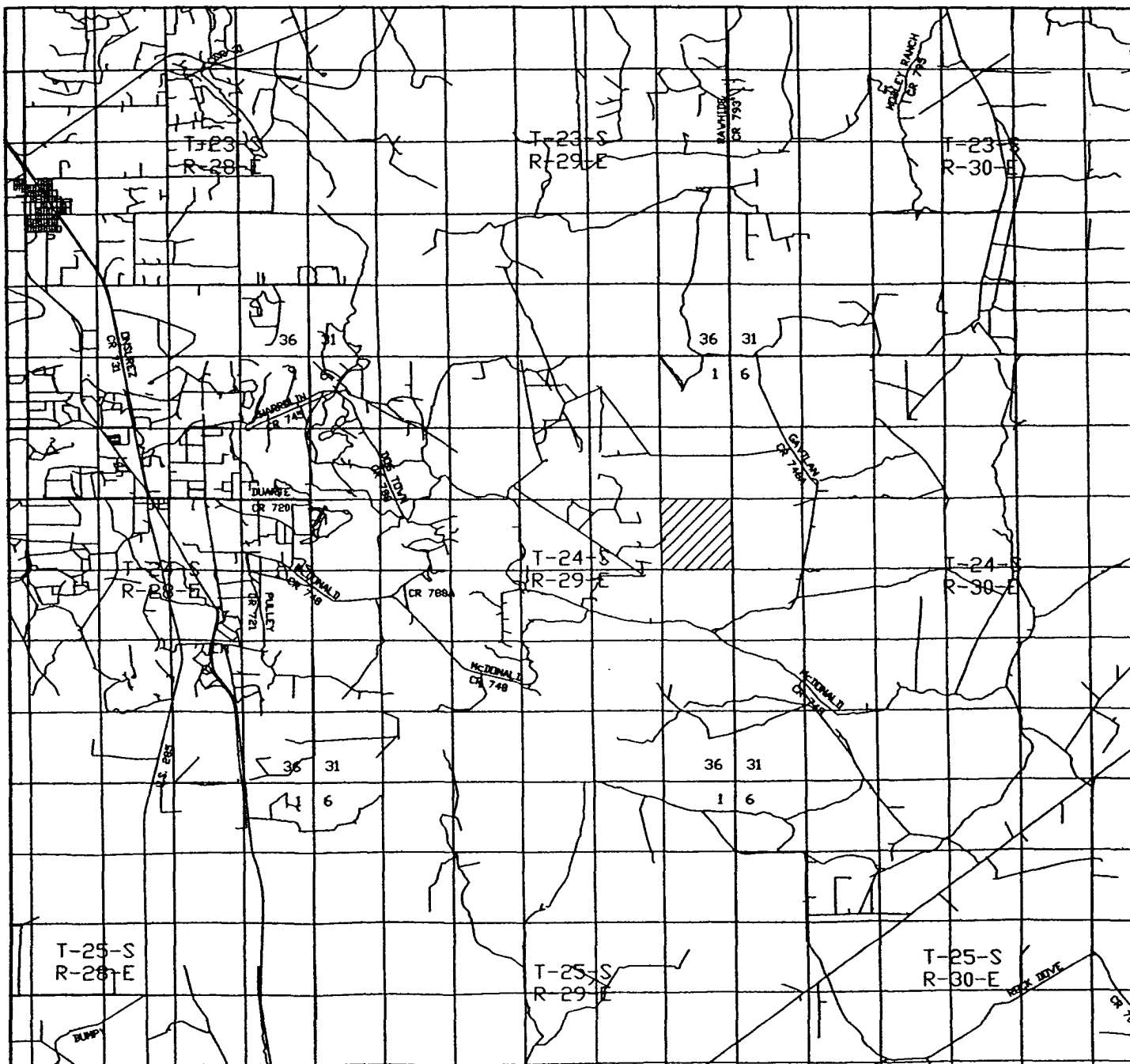
W.O. Number. JMS 6427AA

Survey Date: 04-19-2006

Scale: 1" = 2000'

Date: 04-21-2006

BEPCO, L.P.



POKER LAKE UNIT #276

Located at 1980' FNL and 1980' FEL
 Section 13, Township 24 South, Range 29 East,
 N.M.P.M., Eddy County, New Mexico.



focused on excellence
 in the oilfield

P.O. Box 1786
 1120 N. West County Rd.
 Hobbs, New Mexico 88241
 (505) 393-7316 - Office
 (505) 392-3074 - Fax
 basinsurveys.com

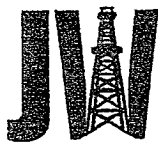
W.O. Number: JMS 6427AA

Survey Date: 04-19-2006

Scale: 1" = 2000'

Date: 04-21-2006

BEPCO, L.P.



DRILLING INC. Oil Well Drilling Contractor

Post Office Box 160 Artesia, New Mexico 88211-0160 Office (505) 748-8704 Fax (505) 748-8719

May 2, 2008

BEPCO, L.P.
P.O. Box 2760
Midland, Texas 79702

Re: Poker Lake Unit #276
Sec. 13, T-24-S, R-29-E
Eddy County, New Mexico

Attn: Bill Dannels

The following is a Deviation Survey on the referenced well in Eddy County, New Mexico:

217' - 1°	3198' - 2.5°	7361' - 1°	8873' - 0.5°
494' - 1.5°	3291' - 1°	7755' - 2.5°	
567' - 0.5°	3446' - 1°	7817' - 2.5°	
945' - 0.5°	3724' - 1°	7887' - 1.5°	
1357' - 1.5°	3999' - 1°	7949' - 2°	
1620' - 2°	4282' - 1°	8011' - 1.5°	
1643' - 2°	4653' - 1.5°	8073' - 2.5°	
1705' - 2°	4931' - 1°	8135' - 2°	
1860' - 1.5°	5240' - 1°	8197' - 2°	
2142' - 1.5°	5454' - 1°	8233' - 2°	
2422' - 1°	5827' - 1°	8285' - 0.5°	
2764' - 2.5°	6219' - 1°	8351' - 1.5°	
2839' - 2°	6570' - 1°	8413' - 1.5°	
3037' - 2.5°	6956' - 1°	8474' - 1.5°	

Sincerely,

Gary W. Chappell
Contracts Manager

STATE OF NEW MEXICO)
COUNTY OF EDDY)

The foregoing was acknowledged before me this 2nd day of May 2008 by Gary W. Chappell.

MY COMMISSION EXPIRES

07/08/09

NOTARY PUBLIC

OFFICIAL SEAL
James Miller
NOTARY PUBLIC-STATE OF NEW MEXICO

My commission expires: 07/08/09