

A-33
N.M. Oil Cons. Div. 2
UNITED STATES 301 W. Grant Avenue
DEPARTMENT OF THE INTERIOR
BUREAU OF LAND MANAGEMENT
Artesia, NM 88210FORM APPROVED
OMB NO. 1004-0136
Expires: February 28, 1995

APPLICATION FOR PERMIT TO DRILL OR DEEPEN

1a. TYPE OF WORK

DRILL ☒DEEPEN ☐

b. TYPE OF WELL

OIL
WELL ☐GAS
WELL ☒

OTHER

SINGLE
ZONE ☒MULTIPLE
ZONE ☐

2. NAME OF OPERATOR

Energy Prod Co LP 6137
DEVON - SES OPERATING, INC. (WALLY FRANK 405-552-4595)

3. ADDRESS AND TELEPHONE NO.

20 NORTH BROADWAY SUITE 1500
OKLAHOMA CITY, OKLAHOMA 73102-8260 (405-552-4595)

4. LOCATION OF WELL (Report location clearly and in accordance with any State requirements.)*

At surface

1790' FNL & 2170' FEL SEC. 8 T22S-R24E EDDY CO. ut. G
At proposed prod. zone BHL. 1980' FSL & 1980' FEL SEC. 8 T22S-R24E

14. DISTANCE IN MILES AND DIRECTION FROM NEAREST TOWN OR POST OFFICE*

Approximately 30 miles Northwest of Carlsbad, New Mexico.

15. DISTANCE FROM PROPOSED*

LOCATION TO NEAREST
PROPERTY OR LEASE LINE, FT.
(Also to nearest drlg. unit line, if any)

1980'

18. DISTANCE FROM PROPOSED LOCATION*

TO NEAREST WELL, DRILLING, COMPLETED,
OR APPLIED FOR, ON THIS LEASE, FT.

1800'

16. NO. OF ACRES IN LEASE

640

19. PROPOSED DEPTH

MD 9904 TVD 8600'

17. NO. OF ACRES ASSIGNED
TO THIS WELL

320

20. ROTARY OR CABLE TOOLS

ROTARY

21. ELEVATIONS (Show whether DF, RT, GR, etc.)

4290' GR.

SUBJECT TO LIKE APPROVAL BY STATE

22. APPROX. DATE WORK WILL START*
WHEN APPROVED

PROPOSED CASING AND CEMENTING PROGRAM

SIZE OF HOLE	GRADE SIZE OF CASING	WEIGHT PER FOOT	SETTING DEPTH	QUANTITY OF CEMENT
25"	Conductor	NA	40'	Cement to surface with Redi-mix
12 1/4"	H-40 9 5/8"	36	1600'	600 Sx. circulate cement
8 3/4"	HCL-80, L-80 7"	23	9904'	500 Sx. estimate TOC 6400'

1. Drill 25" hole to 40'. Set 40' of 20" conductor pipe and cement to surface with Redi-mix.
2. Drill 12 1/4" hole to 1600'. Run and set 1600' of 9 5/8" H-40 36# ST&C casing. Cement with 400 Sx. of 35/65 Class "C" POZ, + 2% CaCl, + 1/4# Celo flakes/Sx. + 3#/Sx. of Kol Seal, + 6% Bentonite, tail in with 200 Sx. of Class "C" cement + 2% CaCl, + 1/4# Celo flakes/Sx. Circulate cement to surface.
3. Drill 8 3/4" hole to 9904'. Run and set 9904' of 7" casing as follows: 2404' of 7" 23# HCL-80 LT&C, 7500' of 7" 23# L-80 LT&C casing. Cement with 500 Sx. of Class "C" 15/61/11 Class "C" cement + 5#/Sx. of LCM-1, + 2% CaCl, + 1% EC-1, + .6% FL-25, + .6% FL-52, + .3% CD-32, + .3% Sodium Metasilicate, + 1/4# Celo flakes/Sx. Estimate top of cement 6400'.

Controlled Water Basin

APPROVAL SUBJECT TO
GENERAL REQUIREMENTS AND
SPECIAL STIPULATIONS
ATTACHED

IN ABOVE SPACE DESCRIBE PROPOSED PROGRAM: If proposal is to deepen, give data on present productive zone and proposed new productive zone. If proposal is to drill or deepen directionally, give pertinent data on subsurface locations and measured and true vertical depths. Give blowout prevention program, if any.

24.

SIGNED

Agent

DATE 10/16/02

(This space for Federal or State office use)

PERMIT NO.

APPROVAL DATE

Application approval does not warrant or certify that the applicant holds legal or equitable title to those rights in the subject lease which would enable the applicant to conduct operations thereon.

CONDITIONS OF APPROVAL: JOE G. LARA

APPROVED BY

TITLE

FIELD MANAGER

DATE

*See Instructions On Reverse Side

Title 18 U.S.C. Section 1001, makes it a crime for any person knowingly and willfully to make to any department or agency of the United States any false, fictitious or fraudulent statements or representations as to any matter within its jurisdiction.

DISTRICT I *
P.O. Box 1980, Hobbs, NM 88241-1980

State of New Mexico
Energy, Minerals and Natural Resources Department

Form C-102
Revised February 10, 1994
Submit to Appropriate District Office
State Lease - 4 Copies
Fee Lease - 3 Copies

DISTRICT II
P.O. Drawer DD, Artesia, NM 88211-0719

OIL CONSERVATION DIVISION

P.O. Box 2088
Santa Fe, New Mexico 87504-2088

DISTRICT III
1000 Rio Brazos Rd., Aztec, NM 87410

DISTRICT IV
P.O. BOX 2088, SANTA FE, N.M. 87504-2088

WELL LOCATION AND ACREAGE DEDICATION PLAT

☐ AMENDED REPORT

API Number	Pool Code 33685	Pool Name INDIAN BASIN UPPER PENN (ASSOC)
Property Code 16875	Property Name OLD RANCH KNOLL "8" FEDERAL	Well Number 7
OGRID No. 20305	Operator Name DEVON SFS OPERATING, INC.	Elevation 4290'

Surface Location

UL or lot No.	Section	Township	Range	Lot Idn	Feet from the	North/South line	Feet from the	East/West line	County
G	8	22-S	24-E		1790'	NORTH	2170'	EAST	EDDY

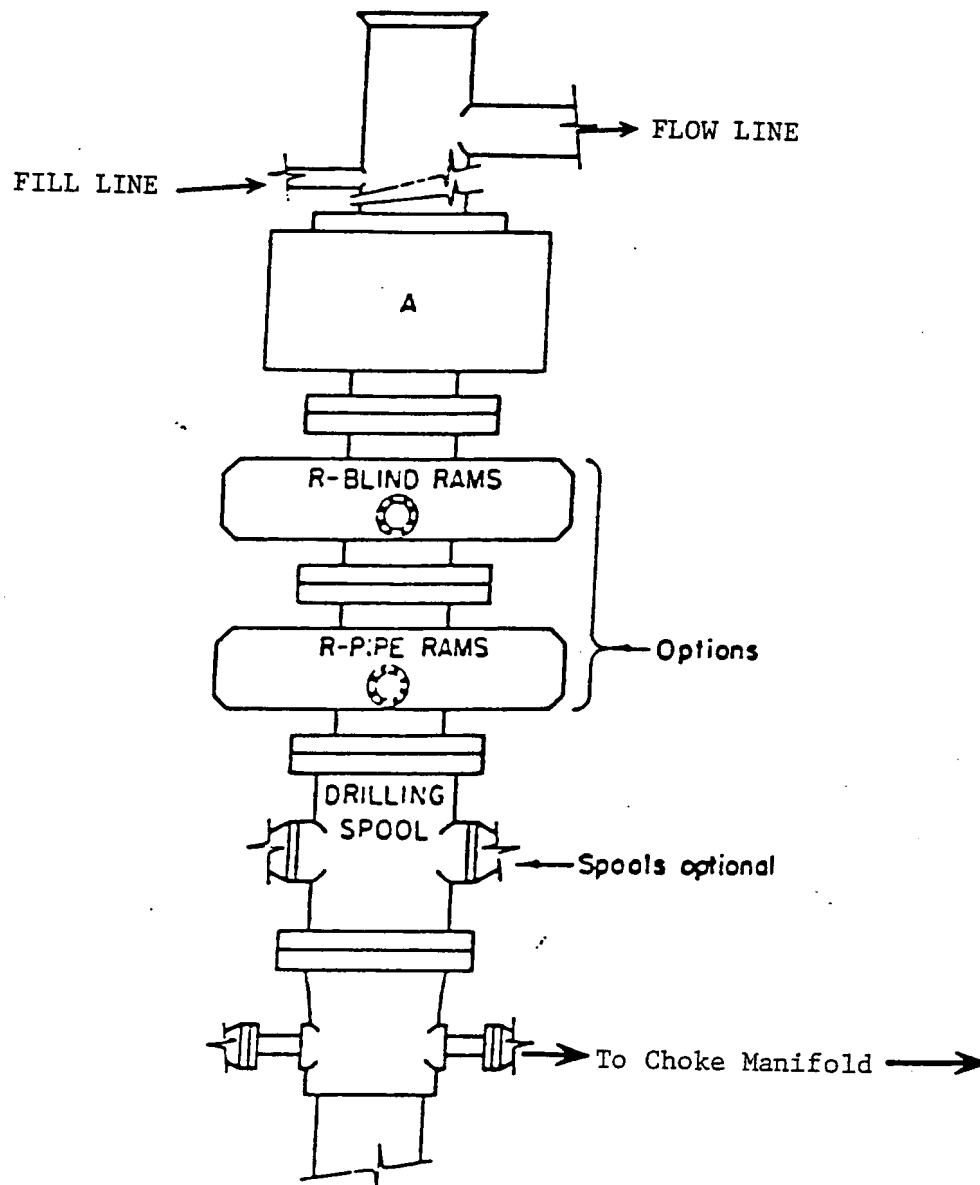
Bottom Hole Location If Different From Surface

UL or lot No.	Section	Township	Range	Lot Idn	Feet from the	North/South line	Feet from the	East/West line	County
J	8	22-S	24-E		1980'	SOUTH	1980'	EAST	EDDY

Dedicated Acres 320	Joint or Infill	Consolidation Code	Order No.
------------------------	-----------------	--------------------	-----------

NO ALLOWABLE WILL BE ASSIGNED TO THIS COMPLETION UNTIL ALL INTERESTS HAVE BEEN CONSOLIDATED
OR A NON-STANDARD UNIT HAS BEEN APPROVED BY THE DIVISION

<p>SURF. LOC. GEODETIC COORDINATES NAD 1927 NME Y=512075.8 X=442878.0 LAT. 32°24'27.63"N LONG. 104°31'06.33"W</p> <p>B.H. LOC.</p>	<p>OPERATOR CERTIFICATION</p> <p>I hereby certify the the information contained heretn is true and complete to the best of my knowledge and belief.</p> <p><i>Joe T. Janica</i> Signature Joe T. Janica Printed Name Agent Title 10/16/02 Date</p> <p>SURVEYOR CERTIFICATION</p> <p>I hereby certify that the well location shown on this plat was plotted from field notes of actual surveys made by me or under my supervision, and that the same is true and correct to the best of my belief.</p> <p>SEPTEMBER 25, 2002 Date Surveyed AWB Signature & Seal of Professional Surveyor RONALD J. EDSON 9/26/02 02.11.0704 Certificate No. RONALD J. EDSON 3239 GARY EDSON 12641</p>
--	--

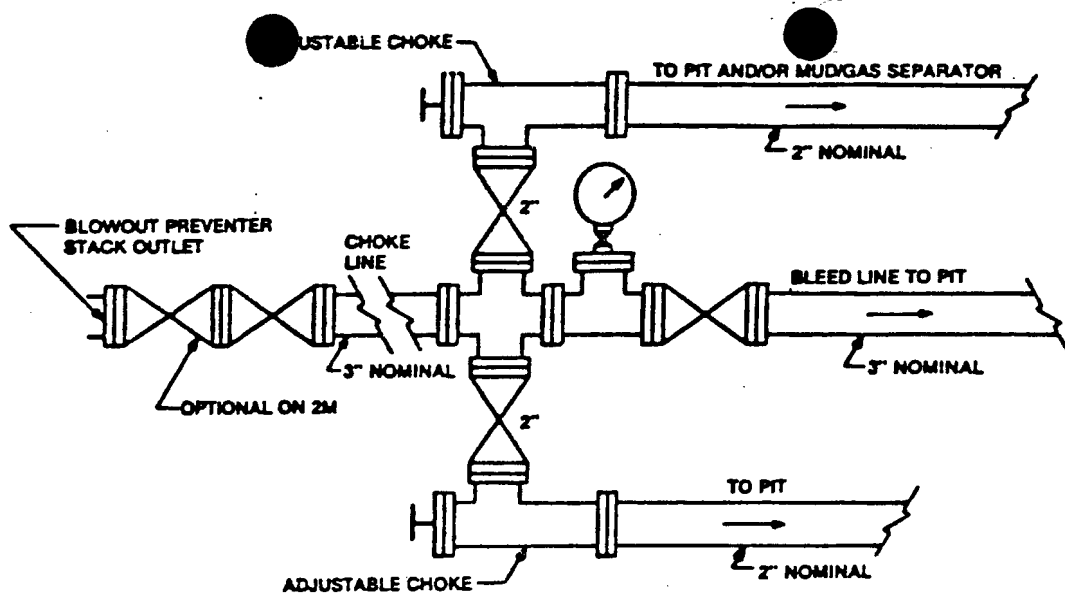


ARRANGEMENT SRRA

900 Series
3000 PSI WP

EXHIBIT "E"
SKETCH OF B.O.P. TO BE USED ON

DEVON-SFS OPERATING, INC.
OLD RANCH KNOLL "8" FEDERAL # 7
UNIT "J" SECTION 8
T22S-R24E EDDY CO. NM



Typical choke manifold assembly for 3M WP system

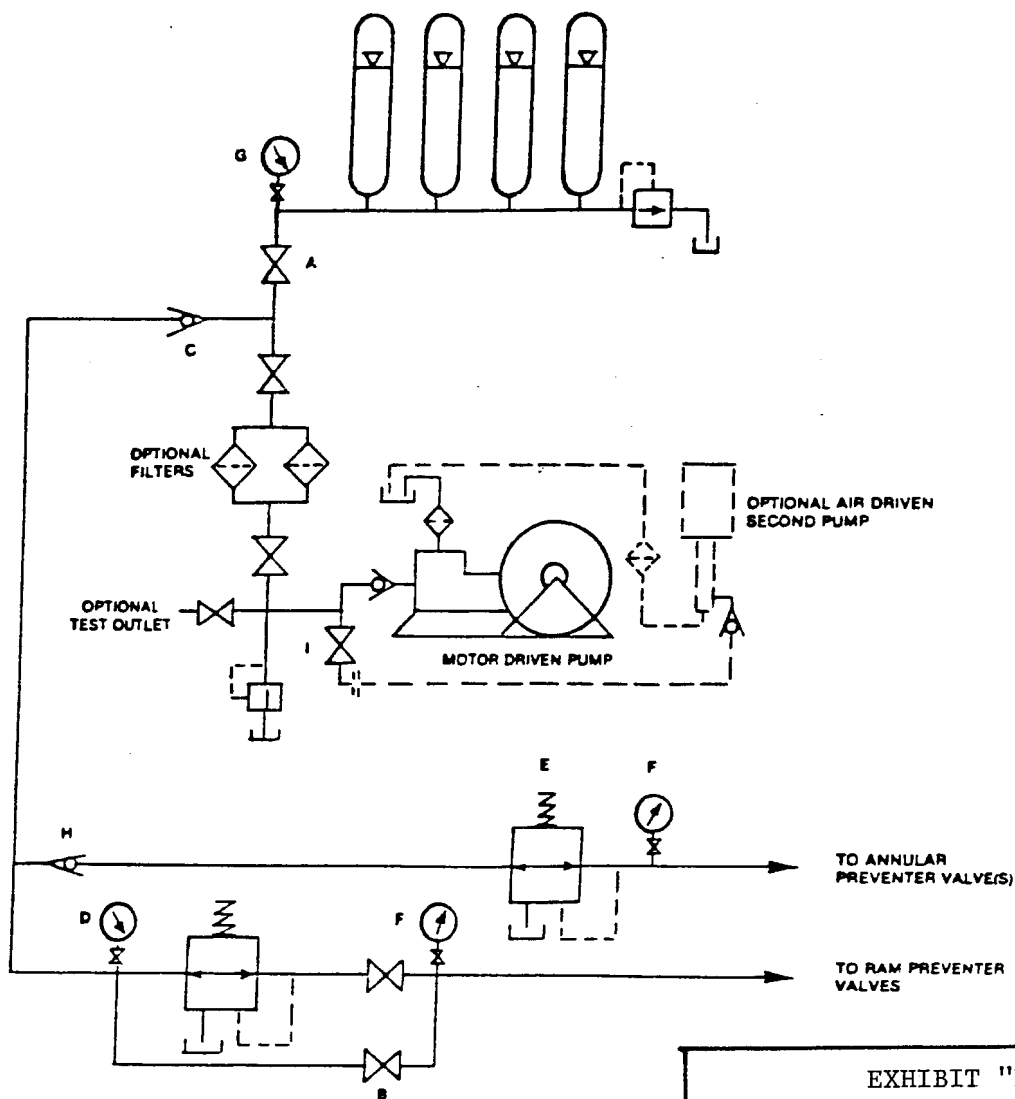


EXHIBIT "E-1"
CHOKE MANIFOLD & CLOSING UNIT

DEVON-SFS OPERATING, INC.
OLD RANCH KNOLL "8" FEDERAL # 7
UNIT "J" SECTION 8
T22S-R24E EDDY CO. NM