

Submit To Appropriate District Office

State Lease - 6 copies

Fee Lease - 5 copies

District I

1625 N French Dr , Hobbs, NM 88240

District II

1301 W Grand Avenue, Artesia, NM 88210

District III

1000 Rio Brazos Rd , Aztec, NM 87410

District IV

1220 S St Francis Dr , Santa Fe, NM 87505

State of New Mexico

Energy, Minerals and Natural Resources

Oil Conservation Division

1220 South St. Francis Dr.

Santa Fe, NM 87505

Form C-105

Revised June 10, 2003

WELL API NO.

30-015-36225

5. Indicate Type of Lease

STATE ☒ FEE ☐

State Oil & Gas Lease No.

WELL COMPLETION OR RECOMPLETION REPORT AND LOG

1a Type of Well.

OIL WELL ☒ GAS WELL ☐ DRY ☐ OTHER

b. Type of Completion:

NEW ☒ WORK ☐ DEEPEN ☐ PLUG ☐ DIFF

WELL OVER BACK RESVR ☐ OTHER

2 Name of Operator

COG Operating LLC

3 Address of Operator

550 W. Texas Ave., Suite 1300 Midland, TX 79701

4 Well Location

Unit Letter G 1650 Feet From The North Line and 1650 Feet From The East Line

Section 16 Township 17S Range 29E NMPM County Eddy

10 Date Spudded 07/18/08

11 Date T D Reached 07/28/08

12 Date Compl. (Ready to Prod.) 08/27/08

13 Elevations (DF& RKB, RT, GR, etc.) 3566 GR

14 Elev. Casinghead

15 Total Depth 5469

16 Plug Back T.D. 5410

17. If Multiple Compl How Many Zones?

18 Intervals Drilled By

Rotary Tools X

Cable Tools

19. Producing Interval(s), of this completion - Top, Bottom, Name

4560 - 5300 Yeso

20. Was Directional Survey Made

No

21 Type Electric and Other Logs Run

CN / HNGS, Micro CFL / HNGS

22. Was Well Cored

No

23. CASING RECORD (Report all strings set in well)

CASING SIZE	WEIGHT LB / FT	DEPTH SET	HOLE SIZE	CEMENTING RECORD	AMOUNT PULLED
17-1/2	48	315	13-3/8	350	Circ 178
11	24	853	8-5/8	500	Circ 183
7-7/8	17	5469	5-1/2	1100	Circ 118

24. LINER RECORD

SIZE	TOP	BOTTOM	SACKS CEMENT	SCREEN

25. TUBING RECORD

SIZE	DEPTH SET	PACKER SET
2-7/8	4424	

26 Perforation record (interval, size, and number)

4560 - 4760 - 2 SPF, 36 holes Open

4830 - 5030 - 2 SPF, 36 holes Open

5100 - 5300 - 2 SPF, 48 holes Open

27. ACID, SHOT, FRACTURE, CEMENT, SQUEEZE, ETC.

DEPTH INTERVAL	AMOUNT AND KIND MATERIAL USED
4560 - 4760	See Attachment
4830 - 5030	See Attachment
5100 - 5300	See Attachment

28 PRODUCTION

Date First Production	Production Method (Flowing, gas lift, pumping - Size and type pump)	Well Status (Prod. or Shut-in)
9/05/08	Pumping using a 2-1/2" x 2" x 20' RHTC pump	Producing

Date of Test	Hours Tested	Choke Size	Prod'n For Test Period	Oil - Bbl	Gas - MCF	Water - Bbl.	Gas - Oil Ratio
9/07/08	24			34	125	491	

Flow Tubing Press	Casing Pressure	Calculated 24-Hour Rate	Oil - Bbl	Gas - MCF	Water - Bbl	Oil Gravity - API - (Corr)
						38.8

29 Disposition of Gas (Sold, used for fuel, vented etc)

SOLD

Test Witnessed By

Kent Greenway

30 List Attachments

Logs, C102, C103, Deviation Report, C104

31 I hereby certify that the information shown on both sides of this form as true and complete to the best of my knowledge and belief

Signature

Printed Name Kanicia Carrillo

Title Regulatory Analyst

Date 09/19/08

E-mail Address kcarrillo@conchoresources.com 432-685-4332

INSTRUCTIONS

This form is to be filed with the appropriate District Office of the Division not later than 20 days after the completion of any newly-drilled or deepened well. It shall be accompanied by one copy of all electrical and radio-activity logs run on the well and a summary of all special tests conducted, including drill stem tests. All depths reported shall be measured depths. In the case of directionally drilled wells, true vertical depths shall also be reported. For multiple completions, items 25 through 29 shall be reported for each zone. The form is to be filed in quintuplicate except on state land, where six copies are required. See Rule 1105.

INDICATE FORMATION TOPS IN CONFORMANCE WITH GEOGRAPHICAL SECTION OF STATE

Southeastern New Mexico		Northwestern New Mexico	
T. Anhy	T. Canyon	T. Ojo Alamo	T. Penn. "B"
T. Salt	T. Strawn	T. Kirtland-Fruitland	T. Penn. "C"
B. Salt	T. Atoka	T. Pictured Cliffs	T. Penn. "D"
T. Yates 890	T. Miss	T. Cliff House	T. Leadville
T. 7 Rivers 1170	T. Devonian	T. Menefee	T. Madison
T. Queen 1750	T. Silurian	T. Point Lookout	T. Elbert
T. Grayburg	T. Montoya	T. Mancos	T. McCracken
T. San Andres 2430	T. Simpson	T. Gallup	T. Ignacio Otzte
T. Glorieta	T. McKee	Base Greenhorn	T. Granite
T. Paddock	T. Ellenburger	T. Dakota	T.
T. Blinebry	T. Gr. Wash	T. Morrison	T.
T. Tubb 5380	T. Delaware Sand	T. Todilto	T.
T. Drinkard	<u>T. Bone Spring</u>	T. Entrada	T.
T. Abo	T. Yeso 3980	T. Wingate	T.
T. Wolfcamp	<u>T. Mississippian</u>	T. Chinle	T.
T. Penn	T.	T. Permian	T.
T. Cisco (Bough C)	T.	T. Penn "A"	T.

OIL OR GA SANDS OR ZONES

No. 1, from.....to.....

No. 2, from.....to.....

IMPORTANT WATER SANDS

Include data on rate of water inflow and elevation to which water rose in hole.

No. 1, from.....to.....feet.....

No. 2, from.....to.....feet.....

No. 3, from.....to.....feet.....

LITHOLOGY RECORD (Attach additional sheet if necessary)

From	To	Thickness In Feet	Lithology

From	To	Thickness In Feet	Lithology

G J WEST COOP UNIT #188
API#: 30-015-36225
EDDY, NM

C-105 (#27) ADDITIONAL INFORMATION

27. ACID, SHOT, FRACTURE, CEMENT, SQUEEZE, ETC.	
DEPTH INTERVAL	AMOUNT AND KIND MATERIAL USED
4560 - 4760	Acidize w/2,500 gals acid
	Frac w/111,000gals gel, 29,311 # Siberprop,
	156,600# 16/30 sand.

27. ACID, SHOT, FRACTURE, CEMENT, SQUEEZE, ETC.	
DEPTH INTERVAL	AMOUNT AND KIND MATERIAL USED
4830 - 5030	Acidize w/2,500 gals acid
	Frac w/118,000 gals gel, 29,011 # Siberprop,
	153,100# 16/30 sand.

27. ACID, SHOT, FRACTURE, CEMENT, SQUEEZE, ETC.	
DEPTH INTERVAL	AMOUNT AND KIND MATERIAL USED
5100 - 5300	Acidize w/2,500 gals acid
	Frac w/118,000 gals gel, 34,000 # Siberprop,
	157,100# 16/30 sand.

DISTRICT I
1626 N FRENCH DR., HOBBS, NM 88240

DISTRICT II
1301 W. GRAND AVENUE, ARTESIA, NM 88210

DISTRICT III
1000 Rio Brazos Rd., Aztec, NM 87410

DISTRICT IV
1220 S. ST FRANCIS DR., SANTA FE, NM 87505

State of New Mexico

Energy, Minerals and Natural Resources Department

OIL CONSERVATION DIVISION
1220 SOUTH ST. FRANCIS DR.
Santa Fe, New Mexico 87505

Form C-102
Revised October 12, 2005
Submit to Appropriate District Office
State Lease - 4 Copies
Fee Lease - 3 Copies

WELL LOCATION AND ACREAGE DEDICATION PLAT

☐ AMENDED REPORT

API Number 30-015-36225	Pool Code 97558	Pool Name GJ;&RVS-QN-GB-GLORIETA-YESO
Property Code 302497	Property Name GJ WEST COOP UNIT	Well Number 188
OGRID No. 229137	Operator Name COG OPERATING, LLC	Elevation 3566'

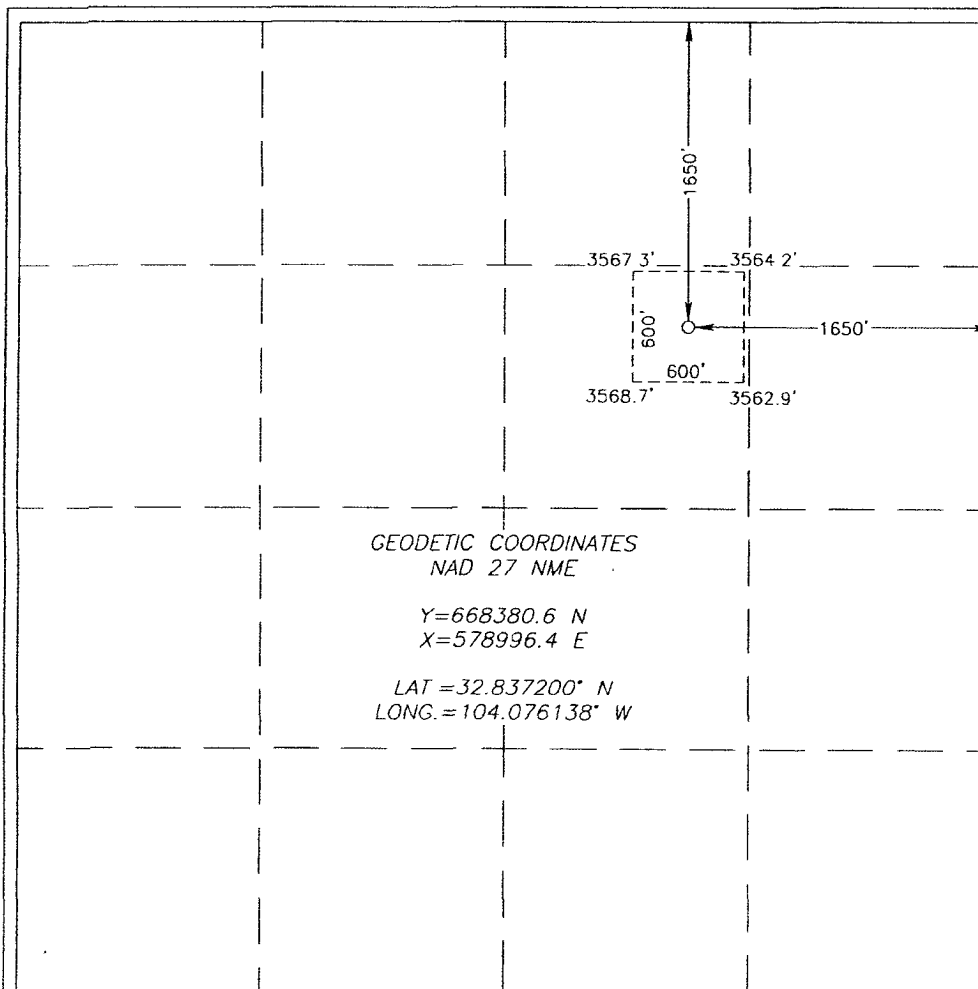
Surface Location

UL or lot No. G	Section 16	Township 17-S	Range 29-E	Lot Idn	Feet from the 1650	North/South line NORTH	Feet from the 1650	East/West line EAST	County EDDY
--------------------	---------------	------------------	---------------	---------	-----------------------	---------------------------	-----------------------	------------------------	----------------

Bottom Hole Location If Different From Surface

UL or lot No.	Section	Township	Range	Lot Idn	Feet from the	North/South line	Feet from the	East/West line	County
Dedicated Acres 40	Joint or Infill	Consolidation Code	Order No.						

NO ALLOWABLE WILL BE ASSIGNED TO THIS COMPLETION UNTIL ALL INTERESTS HAVE BEEN CONSOLIDATED
OR A NON-STANDARD UNIT HAS BEEN APPROVED BY THE DIVISION



OPERATOR CERTIFICATION

I hereby certify that the information herein is true and complete to the best of my knowledge and belief, and that this organization either owns a working interest or unleased mineral interest in the land including the proposed bottom hole location or has a right to drill this well at this location pursuant to a contract with an owner of such mineral or working interest, or to a voluntary pooling agreement or a compulsory pooling order heretofore entered by the division.

Signature: Kanicia Carrillo Date: 9/19/2008
Printed Name

SURVEYOR CERTIFICATION

I hereby certify that the well location shown on this plat was plotted from field notes of actual surveys made by me or under my supervision, and that the same is true and correct to the best of my belief.

Date Surveyed: MARCH 11, 2008 AR
Signature & Seal of Professional Surveyor: GARY EIDSON
Certificate No. GARY EIDSON 12641
RONALD J. EIDSON 3239