

SEP 26 2008
OCD-ARTESIAFORM APPROVED
OMB No. 1004-0137
Expires March 31, 2007AT 5-08-422
EA-08-1214UNITED STATES
DEPARTMENT OF THE INTERIOR
BUREAU OF LAND MANAGEMENT

APPLICATION FOR PERMIT TO DRILL OR REENTER

1a Type of work- <input checked="" type="checkbox"/> DRILL <input type="checkbox"/> REENTER		5 Lease Serial No NMNM-118716
1b Type of Well <input checked="" type="checkbox"/> Oil Well <input type="checkbox"/> Gas Well <input type="checkbox"/> Other <input type="checkbox"/> Single Zone <input type="checkbox"/> Multiple Zone		6 If Indian, Allottee or Tribe Name
2 Name of Operator Mack Energy Corporation		7 If Unit or CA Agreement, Name and No
3a Address P.O. Box 960 Artesia, NM 88211-0960		8 Lease Name and Well No Eagle Nest Federal #1
3b Phone No (include area code) (575)748-1288		9 API Well No. 30-015-36695
4 Location of Well (Report location clearly and announce with any State requirements*) At surface 355 FNL & 530 FWL At proposed prod. zone 355 FNL & 330 FEL		10 Field and Pool, or Exploratory County Line Tank.Abo
14 Distance in miles and direction from nearest town or post office* 10 miles north of Loco Hills, NM		11 Sec, T, R, M or Blk and Survey or Area Sec. 5 T16S R30E
15 Distance from proposed* location to nearest property or lease line, ft (Also to nearest drlg. unit line, if any) 330	16 No. of acres in lease 645.32	17 Spacing Unit dedicated to this well 165.52
18 Distance from proposed* location to nearest well, drilling, completed, applied for on this lease, ft 1320	19 Proposed Depth MD 11,585' TVD 7443'	20 BLM/BIA Bond No. on file NMB000286
21 Elevations (Show whether DF, KDB, RT, GL, etc.) 3815' GR	22 Approximate date work will start* 7/30/08	23 Estimated duration 35 days
24. Attachments		

The following, completed in accordance with the requirements of Onshore Oil and Gas Order No. 1, shall be attached to this form:

- | | |
|---|---|
| 1 Well plat certified by a registered surveyor | 4 Bond to cover the operations unless covered by an existing bond on file (see Item 20 above), |
| 2 A Drilling Plan | 5 Operator certification |
| 3 A Surface Use Plan (if the location is on National Forest System Lands, the SUPO shall be filed with the appropriate Forest Service Office) | 6 Such other site specific information and/or plans as may be required by the authorized officer. |

25 Signature <i>Jerry W. Sherrell</i>	Name (Printed/Typed) Jerry W. Sherrell	Date 7/01/08
Title Production Clerk		
Approved by (Signature)	Name (Printed/Typed)	Date SEP 22 2008
Title FIELD MANAGER	Office CARLSBAD FIELD OFFICE	

Application approval does not warrant or certify that the applicant holds legal or equitable title to those rights in the subject lease which would entitle the applicant to conduct operations thereon.
Conditions of approval, if any, are attached

APPROVAL FOR TWO YEARS

Title 18 U.S.C. Section 1001 and Title 43 U.S.C. Section 1212, make it a crime for any person knowingly and willfully to make to any department or agency of the United States any false, fictitious or fraudulent statements or representations as to any matter within its jurisdiction.

*(Instructions on page 2)

Roswell Controlled Water Basin

Pits must be registered, operated,
maintained and closed per 19.15.17
[NMAC]SEE ATTACHED FOR
CONDITIONS OF APPROVALApproval Subject to General Requirements
& Special Stipulations Attached

DISTRICT I
1625 N. FRENCH DR., HOBBS, NM 88240

State of New Mexico
Energy, Minerals and Natural Resources Department

Form C-102

DISTRICT II
1301 W. GRAND AVENUE, ARTESIA, NM 88210

OIL CONSERVATION DIVISION
1220 SOUTH ST. FRANCIS DR.
Santa Fe, New Mexico 87505

Revised October 12, 2005
Submit to Appropriate District Office
State Lease - 4 Copies
Fee Lease - 3 Copies

DISTRICT III
1000 Rio Brazos Rd., Aztec, NM 87410

DISTRICT IV
1220 S. ST. FRANCIS DR., SANTA FE, NM 87505

WELL LOCATION AND ACREAGE DEDICATION PLAT

☐ AMENDED REPORT

API Number 30-015-36695	Pool Code 97197	Pool Name County-Line Tank; Abo
Property Code 37382	Property Name EAGLE NEST FEDERAL	Well Number 1
OGRID No. 013837	Operator Name MACK ENERGY CORPORATION	Elevation 3815'

Surface Location

UL or lot No.	Section	Township	Range	Lot Idn	Feet from the	North/South line	Feet from the	East/EAST line	County
4	5	16-S	30-E		355	NORTH	530	WEST	EDDY

Bottom Hole Location If Different From Surface

UL or lot No.	Section	Township	Range	Lot Idn	Feet from the	North/South line	Feet from the	East/EAST line	County
1	5	16-S	30-E		355	NORTH	330	EAST	EDDY

Dedicated Acres	Joint or Infill	Consolidation Code	Order No.
165.52			

NO ALLOWABLE WILL BE ASSIGNED TO THIS COMPLETION UNTIL ALL INTERESTS HAVE BEEN CONSOLIDATED
OR A NON-STANDARD UNIT HAS BEEN APPROVED BY THE DIVISION

<div><p>530' 330'</p><p>GRID AZ. = 89° 56' 28"</p><p>HORZ. DIST. = 4427.0'</p><p>SEE DETAIL</p><table border="1"><tr><td>LOT 4 41.53 AC.</td><td>LOT 3 41.43 AC.</td><td>LOT 2 41.33 AC.</td><td>LOT 1 41.23 AC.</td></tr><tr><td>LOT 5 40.00 AC.</td><td>LOT 6 40.00 AC.</td><td>LOT 7 40.00 AC.</td><td>LOT 8 40.00 AC.</td></tr><tr><td>LOT 12 40.00 AC.</td><td>LOT 11 40.00 AC.</td><td>LOT 10 40.00 AC.</td><td>LOT 9 40.00 AC.</td></tr><tr><td>LOT 13 40.00 AC.</td><td>LOT 14 40.00 AC.</td><td>LOT 15 40.00 AC.</td><td>LOT 16 40.00 AC.</td></tr></table></div>	LOT 4 41.53 AC.	LOT 3 41.43 AC.	LOT 2 41.33 AC.	LOT 1 41.23 AC.	LOT 5 40.00 AC.	LOT 6 40.00 AC.	LOT 7 40.00 AC.	LOT 8 40.00 AC.	LOT 12 40.00 AC.	LOT 11 40.00 AC.	LOT 10 40.00 AC.	LOT 9 40.00 AC.	LOT 13 40.00 AC.	LOT 14 40.00 AC.	LOT 15 40.00 AC.	LOT 16 40.00 AC.	<div><p>OPERATOR CERTIFICATION</p><p>I hereby certify that the information herein is true and complete to the best of my knowledge and belief, and that this organization either owns a working interest or unleased mineral interest in the land including the proposed bottom hole location or has a right to drill this well at this location pursuant to a contract with an owner of such mineral or working interest, or to a voluntary pooling agreement or a compulsory pooling order heretofore entered by the division.</p><p><i>Jerry W. Sherrell</i> 6/13/08 Signature Date Jerry W. Sherrell Printed Name</p><p>SURVEYOR CERTIFICATION</p><p>I hereby certify that the well location shown on this plat was plotted from field notes of actual surveys made by me or under my supervision, and that the same is true and correct to the best of my belief.</p><p>DATE: JUNE 13, 2008 Signature & Seal of Professional Surveyor <i>Ronald J. Eidson</i> 6/12/08 Certificate No. GARY G. EIDSON 12641 RONALD J. EIDSON 3239</p></div>
LOT 4 41.53 AC.	LOT 3 41.43 AC.	LOT 2 41.33 AC.	LOT 1 41.23 AC.														
LOT 5 40.00 AC.	LOT 6 40.00 AC.	LOT 7 40.00 AC.	LOT 8 40.00 AC.														
LOT 12 40.00 AC.	LOT 11 40.00 AC.	LOT 10 40.00 AC.	LOT 9 40.00 AC.														
LOT 13 40.00 AC.	LOT 14 40.00 AC.	LOT 15 40.00 AC.	LOT 16 40.00 AC.														

DETAIL

3807.7' 3812.6'

600'

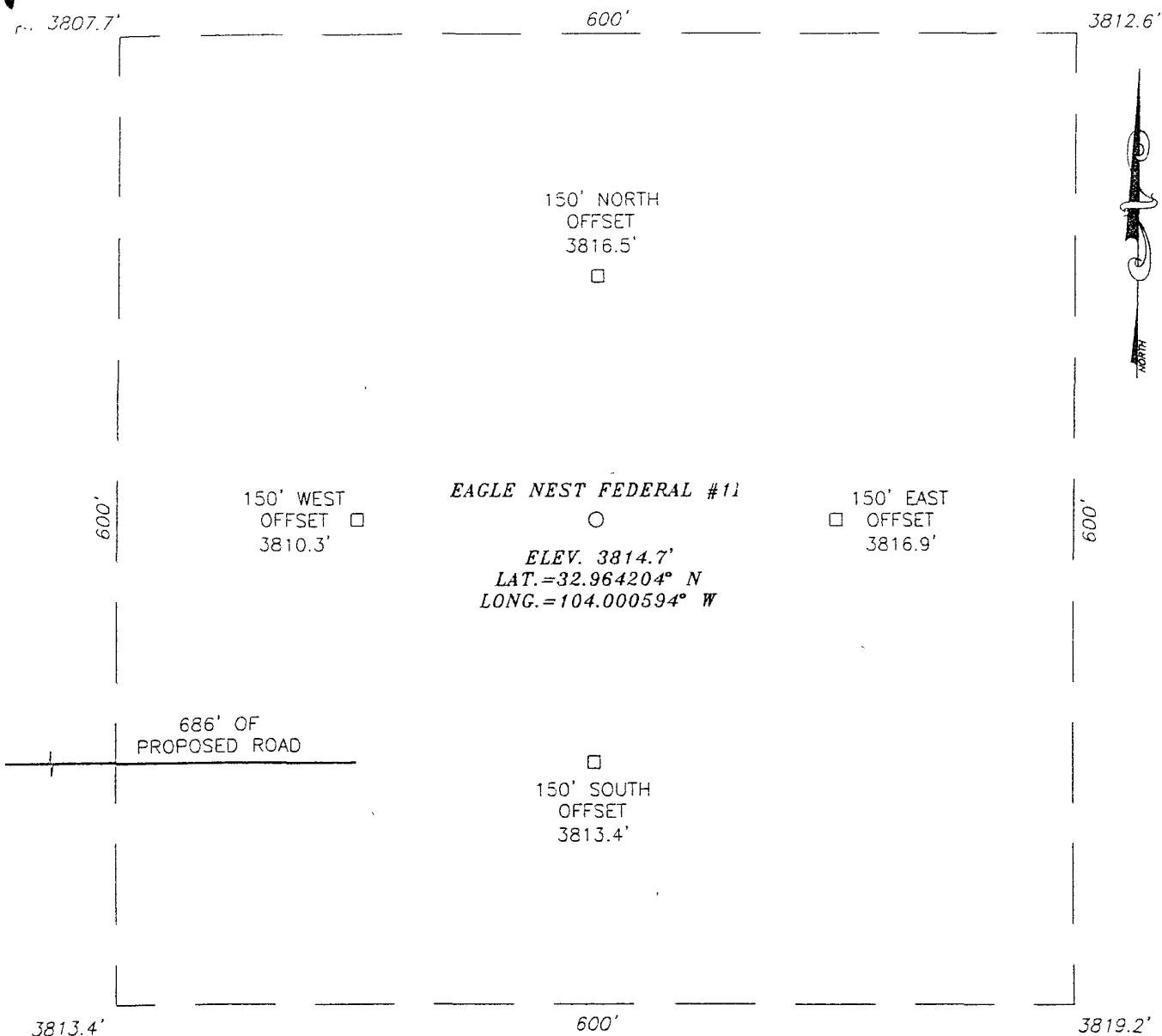
3813.4' 3819.2'

SCALE 1"=2000'

CEODETIC COORDINATES
NAD 27 NME
SURFACE LOCATION
Y=714651.0 N
X=602053.7 E
LAT = 32.964204° N
LONG = 104.000594° W

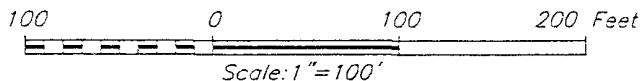
BOTTOM HOLE LOCATION
Y=714655.4 N
X=606479.6 E

SECTION 5, TOWNSHIP 16 SOUTH, RANGE 30 EAST, N.M.P.M.,
EDDY COUNTY, NEW MEXICO



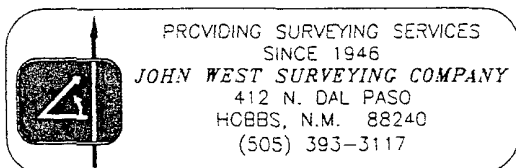
DIRECTIONS TO LOCATION

FROM THE INTERSECTION OF CO. RD #217
(HAGERMAN CUTOFF) AND U.S. HWY. #82 GO NORTH
APPROX. 9.75 MILES ON CO. RD. #217. TURN LEFT
AND GO NORTHWEST APPROX. 1.0 MILE. TURN LEFT
AND GO SOUTH-SOUTHWEST APPROX. 0.6 MILES TO
A PROPOSED ROAD SURVEY. FOLLOW ROAD SURVEY
EAST APPROX. 850 FEET TO THIS LOCATION.



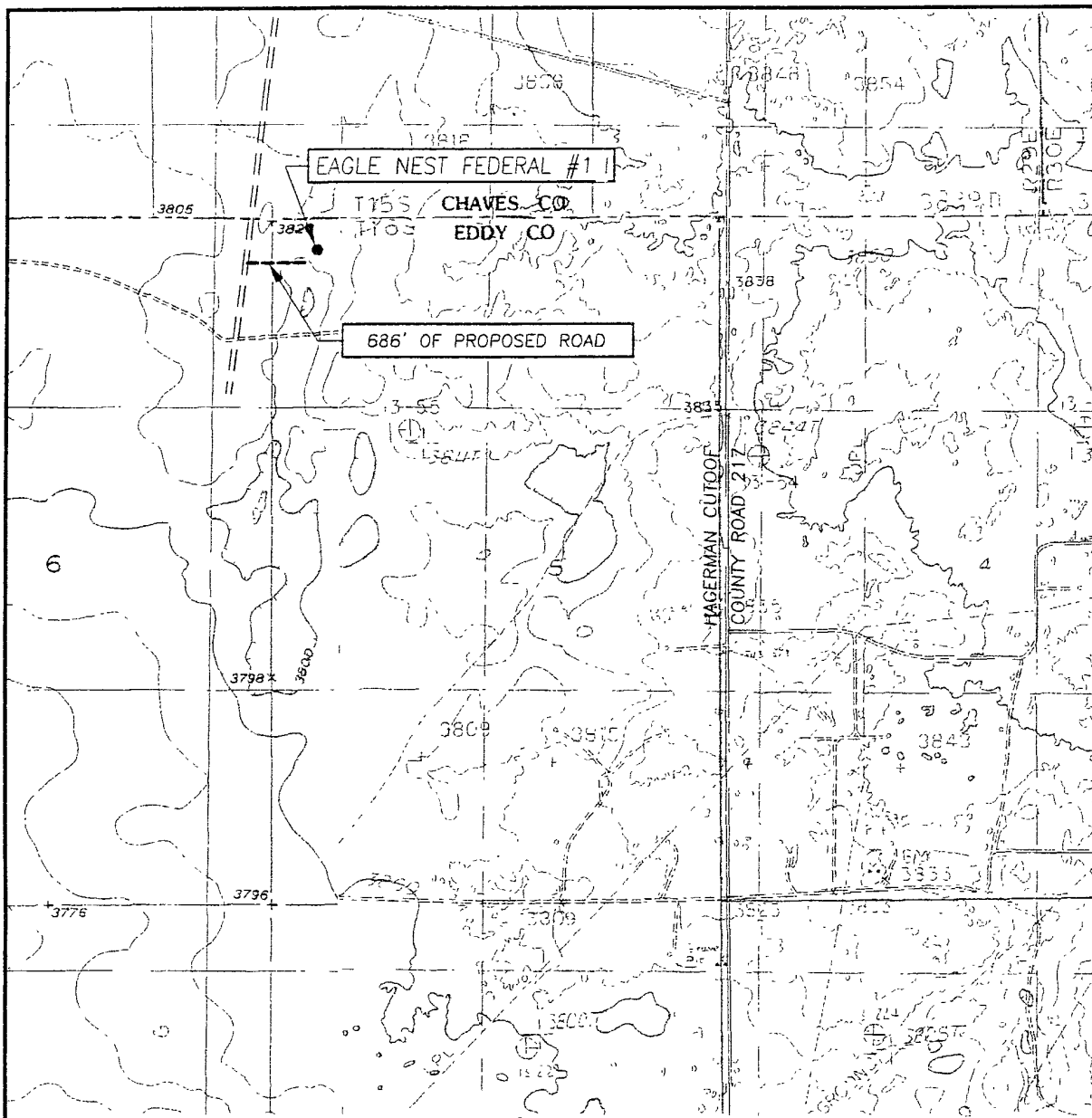
MACK ENERGY CORPORATION

EAGLE NEST FEDERAL #1H WELL
LOCATED 355 FEET FROM THE NORTH LINE
AND 530 FEET FROM THE WEST LINE OF SECTION 5,
TOWNSHIP 16 SOUTH, RANGE 30 EAST, N.M.P.M.,
EDDY COUNTY, NEW MEXICO



Survey Date 6/5/08	Sheet 1 of 1 Sheets
W.O. Number. 08 11.0859	Dr By: LA
Date. 6/11/08	08110859
	Scale: 1"=100'

LOCATION VERIFICATION MAP



SCALE: 1" = 2000'

CONTOUR INTERVAL:
HENSHAW TANK, N.M. - 10'
BASIN WELL, N.M. - 10'

SEC. 5 TWP. 16-S RGE. 30-E

SURVEY N.M.P.M.

COUNTY EDDY STATE NEW MEXICO

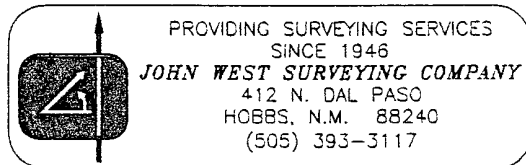
DESCRIPTION 355' FNL & 530' FWL

ELEVATION 3815'

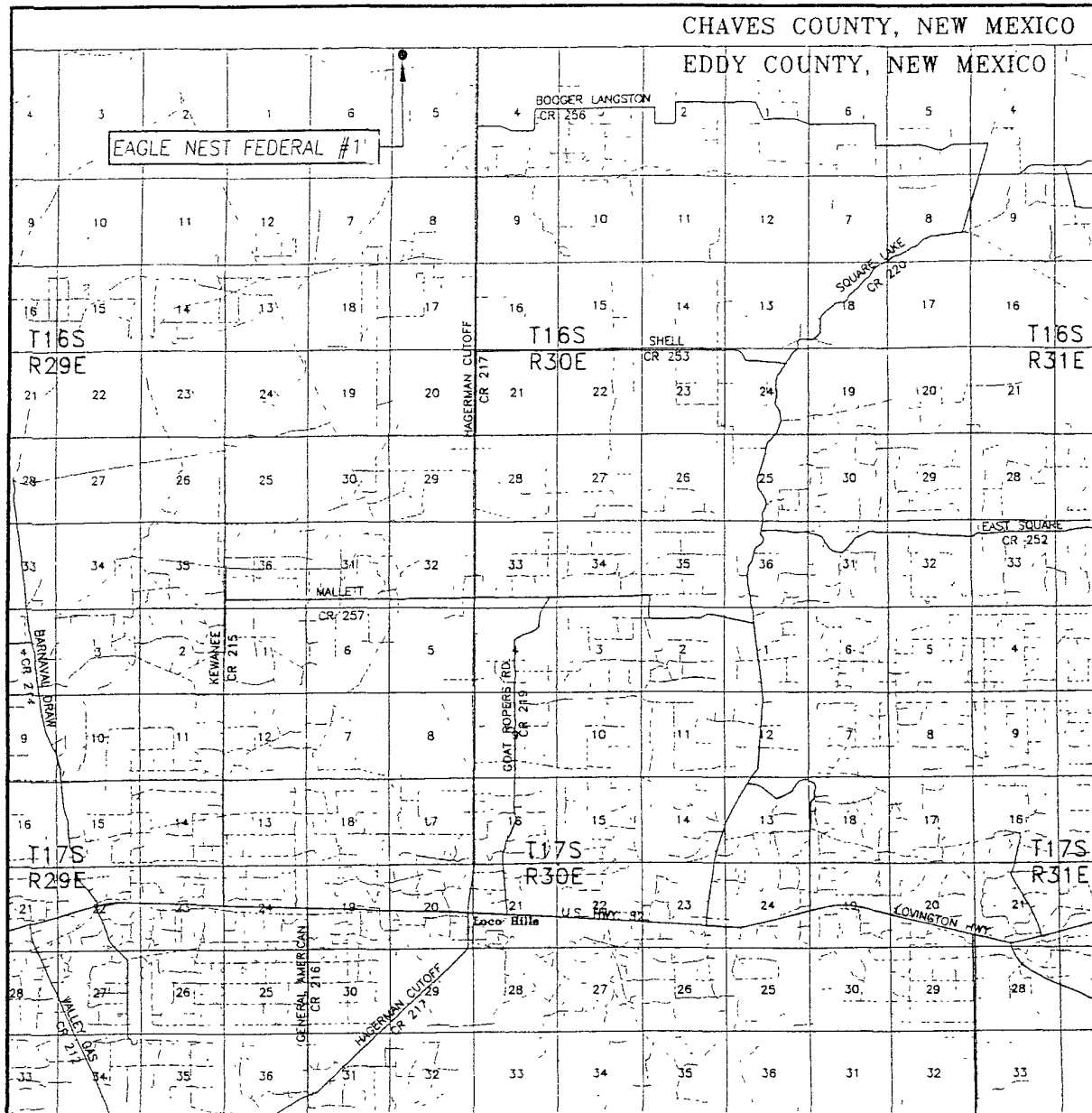
OPERATOR MACK ENERGY CORPORATION

LEASE EAGLE NEST FEDERAL

U.S.G.S. TOPOGRAPHIC MAP
BASIN WELL, N.M.



VICINITY MAP



SCALE: 1" = 2 MILES

SEC. 5 TWP. 16-S RGE. 30-E

SURVEY N.M.P.M

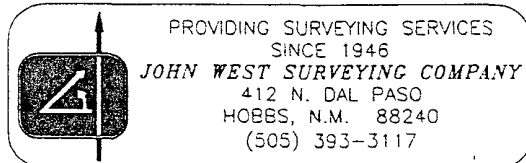
COUNTY EDDY STATE NEW MEXICO

DESCRIPTION 355' FNL & 530' FWL

ELEVATION 3815'

OPERATOR MACK ENERGY CORPORATION

LEASE EAGLE NEST FEDERAL



DRILLING PROGRAM

1. Geologic Name of Surface Formation

Abo

2. Estimated Tops of Important Geologic Markers:

Quaternary	Surface		
Yates	1100'	Glorieta	4125'
Seven Rivers	1340'	Tubb	5350'
Queen	1870'		
Grayburg	2200'		

3. Estimated Depths of Anticipated Fresh Water, Oil and Gas:

Water Sand	150'	Fresh Water
Grayburg	2290'	Oil/Gas
San Andres	2640'	Oil/Gas
Abo	6130'	Oil/Gas

No other formations are expected to give up oil, gas or fresh water in measurable quantities. Setting 13 3/8" casing to 330' and circulating cement back to surface will protect the surface fresh water sand. Salt Section will be protected by setting 9 5/8" casing to 1800' and circulating cement back to surface. Any shallower zones above TD, which contain commercial quantities of oil and/or gas, will have cement circulated across them by cementing 7" 2nd intermediate casing, sufficient cement will be pumped to circulate back to surface.

4. Casing Program:

Hole Size	Interval	OD Casing	Wt, Grade, Jt, cond, collapse/burst/tension
see COA → 17 1/2"	0-330' 475'	13 3/8"	48#, H-40, ST&C, New, 7.84/3.352/13.42
12 1/4"	0-1800'	9 5/8"	36#, J-55, LT&C, New, 2.137/12.111/11.733
8 3/4"	0-6100'	7"	17#, P-110 L&TC, New, 2.597/42.351/37.400
8 3/4"	6100-6750'	7" 7" P-110	17# Buttress, L&TC, New, 2.597/42.351/37.400
6 1/8"	6700-11,585'	4 1/2"	11.6#. HCP-110Buttress, New, 3.504/3.593/3.563

5. Cement Program:

13 3/8" Surface Casing: Class C, 300sx, yield 1.34 ← see COA
9 5/8" Intermediate Casing: Class C, 850sx, yield 1.34
7" 2nd Intermediate Casing: Class C, 850 sx, yield 1.34 ← see COA
4 1/2" Production Liner: Set with isolation packers

6. Minimum Specifications for Pressure Control:

see COA → The blowout preventer equipment (BOP) shown in Exhibit #9 will consist of a double ram-type (3000 psi WP) minimum preventer. This unit will be hydraulically operated and the ram type preventer will be equipped with blind rams on top of 4 1/2" drill pipe rams on bottom. The BOP will be nipped up on the 13 3/8" surface casing and tested to 1000 psi using the rig pump. The BOP will then be nipped up on the 9 5/8" intermediate casing and tested by a 3rd party to 2000 psi and used continuously until TD is reached. All BOP's and accessory equipment will be tested to 2000 psi before drilling out of surface casing. Pipe rams will be operationally checked each 24-hour period. Blind rams will be operationally checked on each trip out of the hole. These checks will be noted on the daily tour sheets. Other accessories to the BOP equipment (Exhibit #10) will include a Kelly cock and floor safety valve and choke lines and choke manifold (Exhibit #11) with a minimum 3000 psi WP rating. ← see COA

7. Types and Characteristics of the Proposed Mud System:

The well will be drilled to TD with a combination of brine, cut brine and polymer mud system. The applicable depths and properties of this system are as follows:

see COA →

DEPTH	TYPE	WEIGHT	VISCOSITY	WATERLOSS
0-330' 975	Fresh Water	9.4	28	N.C.
330-1800' 975	Brine	10.1	30	N.C.
1800'-TD	Cut Brine	9.8	29	N.C.

Sufficient mud materials to maintain mud properties and meet minimum lost circulation and weight increase requirements will be kept at the well site at all times.

8. Auxiliary Well Control and Monitoring Equipment:

- A. Kelly cock will be kept in the drill string at all times.
- B. A full opening drill pipe-stabbing valve with proper drill pipe connections will be on the rig floor at all times.

9. Logging, Testing and Coring Program:

Attached to Form 3160-3
Mack Energy Corporation
Eagle Nest Federal #1
355 FNL & 530 FWL, Sec. 5 T16S R30E
Eddy County, NM

- A. The electric logging program will consist of GR-Dual Laterolog, Spectral Density, Dual Spaced Neutron, CSNG Log and will be ran from T.D. to 8 5/8 casing shoe.
- B. Drill Stem test is not anticipated.
- C. No conventional coring is anticipated.
- D. Further testing procedures will be determined after the 5 1/2" production casing has been cemented at TD based on drill shows and log evaluation.

10. Abnormal Conditions, Pressures, Temperatures and Potential Hazards:

No abnormal pressures or temperatures are anticipated. The estimated bottom hole at TD is 110 degrees and estimated maximum bottom hole pressure is 1450 psig. Low levels of Hydrogen sulfide have been monitors in producing wells in the area, so H2S may be present while drilling of the well, a plan is attached to the Drilling program. No major loss of circulation zones has been reported in offsetting wells.

11. Anticipated Starting Date and Duration of Operations:

Road and location work will not begin until approval has been received from the BLM. The anticipated spud date is July 30, 2008. Once commenced, the drilling operation should be finished in approximately 10 days. If the well is productive, an additional 30 days will be required for completion and testing before a decision is made to install permanent facilities.

BEARING SERVICE & SUPPLY COMPANY, INC.

Operator: MACK ENERGY	Well Name: Eagle Nest Fed. #1
Project ID: 1	Location: Eddy County, NM

Design Parameters:

Mud weight (9.40 ppg) : 0.488 psi/ft
 Shut in surface pressure : 300 psi
 Internal gradient (burst) : 0.000 psi/ft
 Annular gradient (burst) : 0.000 psi/ft
 Tensile load is determined using air weight
 Service rating is "Sweet"

Design Factors:

Collapse : 1.125
 Burst : 1.00
 8 Round : 1.80 (J)
 Buttress : 1.60 (J)
 Other : 1.50 (J)
 Body Yield : 1.50 (B)

Length (feet)	Size (in.)	Weight (lb/ft)	Grade	Joint	Depth (feet)	Drift (in.)	Cost
1	400	13.375	48.00	H-40	ST&C	400	12.559
	Collapse Load Strgth S.F. (psi) (psi)		Burst Load Strgth (psi)	Min Int Strgth (psi)	Yield S.F.	Tension Load Strgth S.F. (kips) (kips)	
1	195	740 3.789	300	1730	5.77	19.20	322 16.77 J

Prepared by : Jim Scroggin, Artesia, New Mexico

Date : 07-29-2008

Remarks :

Minimum segment length for the 400 foot well is 100 feet.

Surface string:

Next string will set at 1,800 ft. with 10.10 ppg mud (pore pressure of 944 psi.) The frac gradient of 0.750 psi/ft at 400 feet results in an injection pressure of 300 psi Effective BHP (for burst) is 300 psi.

NOTE: The design factors used in this casing string design are as shown above. As a general guideline, Lone Star Steel recommends using minimum design factors of 1.125 - Collapse (with evacuated casing), 1.0 - Burst, 1.8 - 8 Round Tension, 1.6 - Buttress Tension, and 1.5 - Body Yield. Collapse strength under axial tension was calculated based on the Westcott, Dunlop and Kemler curve. Engineering responsibility for use of this design will be that of the purchaser. Costs for this design are based on a 1987 pricing model. (Version 1.06+)

BEARING SERVICE & SUPPLY COMPANY, INC.

Operator: MACK ENERGY	Well Name: Eagle Nest Fed #1
Project ID: 2	Location: Eddy county, NM

Design Parameters:

Mud weight (10.10 ppg) : 0.525 psi/ft
 Shut in surface pressure : 1350 psi
 Internal gradient (burst) : 0.000 psi/ft
 Annular gradient (burst) : 0.000 psi/ft
 Tensile load is determined using air weight
 Service rating is "Sweet"

Design Factors:

Collapse : 1.125
 Burst : 1.00
 8 Round : 1.80 (J)
 Buttress : 1.60 (J)
 Other : 1.50 (J)
 Body Yield : 1.50 (B)

Length (feet)	Size (in.)	Weight (lb/ft)	Grade	Joint	Depth (feet)	Drift (in.)	Cost	
1	1,800	9.625	36.00	J-55	ST&C	1,800	8.765	
	Collapse Load Strgth (psi) (psi)		S.F.	Burst Load (psi)	Min Int Yield Strgth (psi)	S.F.	Tension Load Strgth (kips) (kips)	S.F.
1	944	2020	2.139	1350	3520	2.61	64.80 394	6.08 J

Prepared by : Jim Scroggin, Artesia, New Mexico

Date : 07-29-2008

Remarks :

Minimum segment length for the 1,800 foot well is 1,000 feet.

Surface/Intermediate string:

Next string will set at 6,750 ft. with 9.80 ppg mud (pore pressure of 3,436 psi.) The frac gradient of 0.750 psi/ft at 1,800 feet results in an injection pressure of 1,350 psi Effective BHP (for burst) is 1,350 psi.

The minimum specified drift diameter is 8.750 in.

NOTE: The design factors used in this casing string design are as shown above. As a general guideline, Lone Star Steel recommends using minimum design factors of 1.125 - Collapse (with evacuated casing), 1.0 - Burst, 1.8 - 8 Round Tension, 1.6 - Buttress Tension, and 1.5 - Body Yield. Collapse strength under axial tension was calculated based on the Westcott, Dunlop and Kemler curve. Engineering responsibility for use of this design will be that of the purchaser. Costs for this design are based on a 1987 pricing model. (Version 1.06+)

BEARING SERVICE & SUPPLY COMPANY, INC.

Operator: MACK ENERGY	Well Name: Eagle Nest Fed #1
Project ID: 3	Location: Eddy County, NM

Design Parameters:

Mud weight (9.80 ppg) : 0.509 psi/ft
 Shut in surface pressure : 3818 psi
 Internal gradient (burst) : 0.000 psi/ft
 Annular gradient (burst) : 0.000 psi/ft
 Tensile load is determined using air weight
 Service rating is "Sweet"

Design Factors:

Collapse : 1.125
 Burst : 1.00
 8 Round : 1.80 (J)
 Buttress : 1.60 (J)
 Other : 1.50 (J)
 Body Yield : 1.50 (B)

Length (feet)		Size (in.)	Weight (lb/ft)	Grade	Joint	Depth (feet)	Drift (in.)	Cost	
1	6,000	7.000	26.00	LS-110	LT&C	6,000	6.151		
2	750	7.000	26.00	LS-110	Buttress	6,750	6.151		
	Collapse Load Strgth S.F. (psi) (psi)			Burst Load (psi)	Min Int Yield Strgth S.F. (psi)	Tension Load Strgth S.F. (kips) (kips)			
1	3055	7750	2.537	3818	9960	2.61	175.50	693	3.95 J
2	3436	7800	2.270	3818	9960	2.61	19.50	830	42.56 B

Prepared by : Jim Scroggin, Artesia, New Mexico

Date : 07-29-2008

Remarks :

Minimum segment length for the 6,750 foot well is 1,000 feet.

Intermediate string:

Next string will set at 7,500 ft. with 9.80 ppg mud (pore pressure of 3,818 psi.) The frac gradient of 0.750 psi/ft at 6,750 feet results in an injection pressure of 5,062 psi Effective BHP (for burst) is 3,818 psi.

NOTE: The design factors used in this casing string design are as shown above. As a general guide-line, Lone Star Steel recommends using minimum design factors of 1.125 - Collapse (with evacuated casing), 1.0 - Burst, 1.8 - 8 Round Tension, 1.6 - Buttress Tension, and 1.5 - Body Yield. Collapse strength under axial tension was calculated based on the Westcott, Dunlop and Kemler curve. Engineering responsibility for use of this design will be that of the purchaser. Costs for this design are based on a 1987 pricing model. (Version 1.06+)

BEARING SERVICE & SUPPLY COMPANY, INC.

Operator: MACK ENERGY	Well Name: Eagle Nest Fed. #1
Project ID: 4	Location: Eddy County, NM

Design Parameters:

Mud weight (9.80 ppg) : 0.509 psi/ft
 Shut in surface pressure : 3818 psi
 Internal gradient (burst) : 0.000 psi/ft
 Annular gradient (burst) : 0.000 psi/ft
 Tensile load is determined using air weight
 Service rating is "Sweet"

Design Factors:

Collapse : 1.125
 Burst : 1.00
 8 Round : 1.80 (J)
 Buttress : 1.60 (J)
 Other : 1.50 (J)
 Body Yield : 1.50 (B)

Length (feet)	Size (in.)	Weight (lb/ft)	Grade	Joint	Depth (feet)	Depth (TVD)	Cost		
1	4,886	4.500	11.60	LS-110	Buttress	11,586	7,500		
	Collapse Load Strgth (psi) (psi)		S.F.	Burst Load (psi)	Min Int Yield Strgth (psi)	S.F.	Tension Load Strgth (kips) (kips)		S.F.
1	3818	8650	2.265	3818	10690	2.80	56.68	367	6.48 B

Prepared by : Jim Scroggin, Artesia, New Mexico

Date : 07-29-2008

Remarks :

Minimum segment length for the 11,586 foot well is 1,000 feet.

The liner string design has a specified top of 6,700 feet.

The burst load shown is the pressure at the of the segment.

Minimum drift diameter of this directional well string is 3.875 in. Other

parameters include: TD (Meas): 11,586 ft. Departure @ TD: 4,600 ft.

KOP: 6,700 ft. BU α : 12.000°/100 ft.

@ 1st Slant α : 90.000° VD: 7,177 ft Departure: 477 ft MD: 7,450 ft

@ 2nd Slant Angle: α : 90.000° MD: 0 ft Bending load: 0.00 kips

The mud gradient and bottom hole pressures (for burst) are 0.509 psi/ft and

3,818 psi, respectively.

NOTE: The design factors used in this casing string design are as shown above. As a general guide-line, Lone Star Steel recommends using minimum design factors of 1.125 - Collapse (with evacuated casing), 1.0 - Burst, 1.8 - 8 Round Tension, 1.6 - Buttress Tension, and 1.5 - Body Yield. Collapse strength under axial tension was calculated based on the Westcott, Dunlop and Kemler curve. Engineering responsibility for use of this design will be that of the purchaser.

Costs for this design are based on a 1987 pricing model. (Version 1.06+)

Mack Energy

Eddy County

Eagle Nest Federal #1H

Eagle Nest Federal #1H

Original Hole

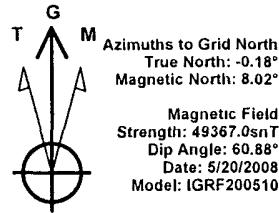
Plan: Plan #1

Pathfinder X & Y Survey Report

25 June, 2008

PATHFINDER
ENERGY SERVICES

Mack Energy Corporation



PATHFINDER ENERGY SERVICES

WELL DETAILS Eagle Nest Federal #3H						
Ground Elevation 3809.00						
RKB Elevation EST RKB @ 3819.50ft						
Rig Name:						
+N/-S	+E/-W	North	East	Latitude	Longitude	Slot
0.00	0.00	712011.300	602113.800	32° 57' 25.013 N	104° 0' 1.531 W	

PROJECT DETAILS: Eddy County
Geodetic System: US State Plane 1927 (Exact solution)
Datum: NAD 1927 (NADCON CONUS)
Ellipsoid: Clarke 1866
Zone: New Mexico East 3001
System Datum: Mean Sea Level
Local North: Grid

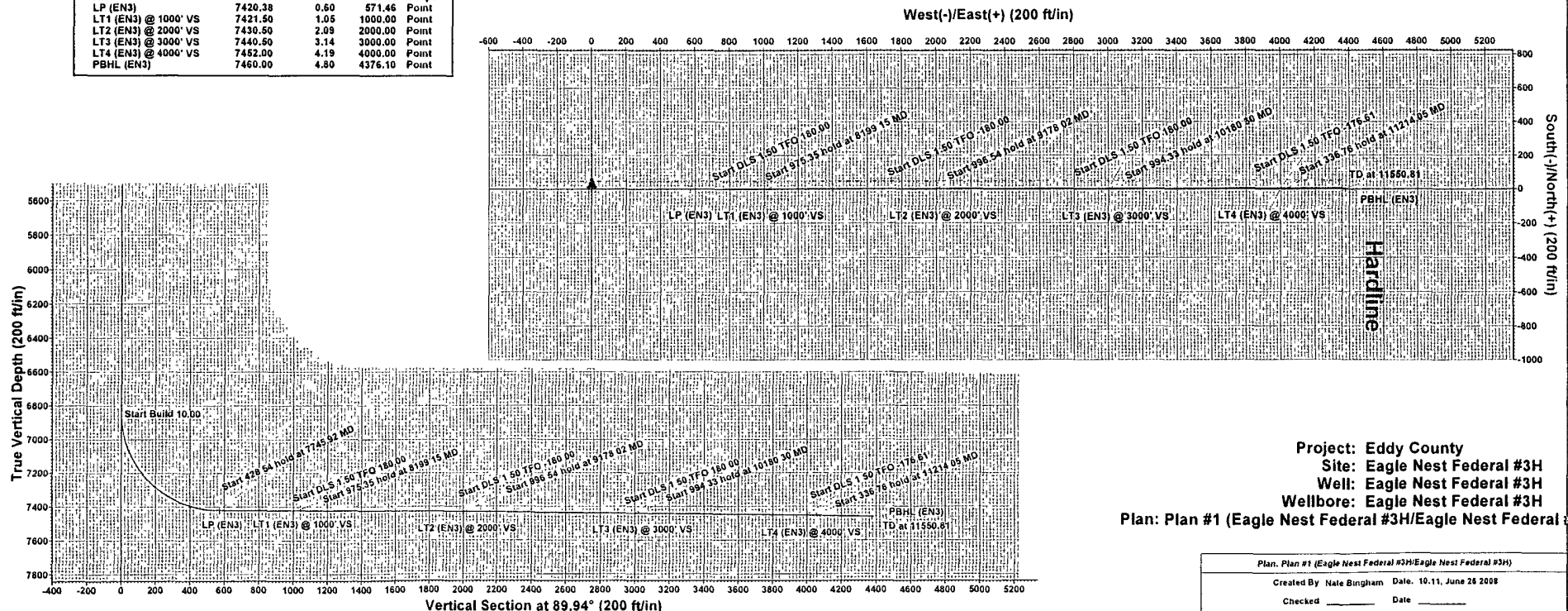
SECTION DETAILS										
Sec	MD	Inc	Azi	TVD	+N/-S	+E/-W	DLeg	TFace	VSec	Target
1	0.00	0.00	0.00	0.00	0.00	0.00	0.00	0.00	0.00	
2	6847.42	0.00	0.00	6847.42	0.00	0.00	0.00	0.00	0.00	
3	7745.92	89.85	89.94	7420.38	0.80	571.46	10.00	89.94	571.46	
4	8174.46	89.85	89.94	7421.50	1.05	1000.00	0.00	0.00	1000.00	
5	8199.15	89.48	89.94	7421.64	1.07	1024.69	1.50	180.00	1024.69	LT1 (EN3) @ 1000' VS
6	9174.51	89.48	89.94	7430.50	2.09	2000.00	0.00	0.00	2000.00	LT2 (EN3) @ 2000' VS
7	9178.02	89.43	89.94	7430.53	2.10	2003.51	1.50	-180.00	2003.51	
8	10174.56	89.43	89.94	7440.50	3.14	3000.00	0.00	0.00	3000.00	LT3 (EN3) @ 3000' VS
9	10180.30	89.34	89.94	7440.56	3.15	3005.74	1.50	180.00	3005.74	
10	11174.62	89.34	89.94	7452.00	4.19	4000.00	0.00	0.00	4000.00	LT4 (EN3) @ 4000' VS
11	11214.05	88.75	89.91	7452.66	4.24	4039.42	1.50	-175.61	4039.42	
12	11550.81	88.75	89.91	7460.00	4.80	4376.10	0.00	0.00	4376.10	PBHL (EN3)

Bureau of Land Management
RECEIVED

JUN 27 2008

Carlsbad Field Office
Carlsbad, NM

WELLBORE TARGET DETAILS				
Name	TVD	+N/-S	+E/-W	Shape
LP (EN3)	7420.38	0.60	571.46	Point
LT1 (EN3) @ 1000' VS	7421.50	1.05	1000.00	Point
LT2 (EN3) @ 2000' VS	7430.50	2.09	2000.00	Point
LT3 (EN3) @ 3000' VS	7440.50	3.14	3000.00	Point
LT4 (EN3) @ 4000' VS	7452.00	4.19	4000.00	Point
PBHL (EN3)	7460.00	4.80	4376.10	Point



Project: Eddy County
Site: Eagle Nest Federal #3H
Well: Eagle Nest Federal #3H
Wellbore: Eagle Nest Federal #3H
Plan: Plan #1 (Eagle Nest Federal #3H/Eagle Nest Federal #3H)

Plan: Plan #1 (Eagle Nest Federal #3H/Eagle Nest Federal #3H)
Created By: Nate Bingham Date: 10-11, June 26 2008
Checked: _____ Date: _____

Pathfinder Energy Services
Pathfinder X & Y Survey Report



Company:	Mack Energy	Local Co-ordinate Reference:	Well Eagle Nest Federal #1H
Project:	Eddy County	TVD Reference:	EST-RKB @ 3827.50ft
Site:	Eagle Nest Federal #1H	MD Reference:	EST RKB @ 3827.50ft
Well:	Eagle Nest Federal #1H	North Reference:	Grid
Wellbore:	Original Hole	Survey Calculation Method:	Minimum Curvature
Design:	Plan #1	Database:	EDM 2003.16 Single User Db

Project: Eddy County	
Map System:	US State Plane 1927 (Exact solution)
Geo Datum:	NAD 1927 (NADCON CONUS)
Map Zone:	New Mexico East 3001
System Datum:	Mean Sea Level

Site		Eagle Nest Federal #1H			
Site Position:		Northing:	714,651.000 ft	Latitude:	32° 57' 51.135 N
From:	Map	Easting:	602,053.700 ft	Longitude:	104° 0' 2.139 W
Position Uncertainty:	0.00 ft	Slot Radius:	"	Grid Convergence:	0.18 °

Well	Eagle Nest Federal #1H				
Well Position	+N-S	0.00 ft	Northing:	714,651.000 ft	Latitude: 32° 57' 51.135 N
	+E-W	0.00 ft	Easting:	602,053.700 ft	Longitude: 104° 0' 2.139 W
Position Uncertainty		0.00 ft	Wellhead Elevation:	ft	Ground Level: 3,815.00 ft

Wellbore:	Original Hole
------------------	---------------

Magnetics	Model Name	Sample Date	Declination (°)	Dip Angle (°)	Field Strength (nT)
	IGRF200510	5/19/2008	8.20	60.88	49,372

Design:	Plan #1
----------------	---------

Audit Notes:	
Version:	Phase: PLAN Tie On Depth: 0.00

Vertical Section:	Depth From (TVD) (ft)	+N-S (ft)	+E-W (ft)	Direction (°)
	0.00	0.00	0.00	89.94

Survey Tool Program		Date 6/25/2008		
From (ft)	To (ft)	Survey (Wellbore)	Tool Name	Description
0.00	11,584.62	Plan #1 (Original Hole)	MWD	MWD - Standard

Pathfinder Energy Services
Pathfinder X & Y Survey Report



Company:	Mack Energy	Local Co-ordinate Reference:	Well Eagle Nest Federal #1H
Project:	Eddy County	TVD Reference:	EST RKB @ 3827.50ft
Site:	Eagle Nest Federal #1H	MD Reference:	EST RKB @ 3827.50ft
Well:	Eagle Nest Federal #1H	North Reference:	Grid
Wellbore:	Original Hole	Survey Calculation Method:	Minimum Curvature
Design:	Plan #1	Database:	EDM 2003.16 Single User Db

Planned Survey											
MD (ft)	Inc (°)	Azi (°)	TVD (ft)	TVDSS (ft)	N/S (ft)	E/W (ft)	V. Sec (ft)	D Leg (°/100ft)	Northing (ft)	Easting (ft)	
0.00	0.00	0.00	0.00	-3,827.50	0.00	0.00	0.00	0.00	714,651.00	602,053.70	
100.00	0.00	0.00	100.00	-3,727.50	0.00	0.00	0.00	0.00	714,651.00	602,053.70	
200.00	0.00	0.00	200.00	-3,627.50	0.00	0.00	0.00	0.00	714,651.00	602,053.70	
300.00	0.00	0.00	300.00	-3,527.50	0.00	0.00	0.00	0.00	714,651.00	602,053.70	
400.00	0.00	0.00	400.00	-3,427.50	0.00	0.00	0.00	0.00	714,651.00	602,053.70	
500.00	0.00	0.00	500.00	-3,327.50	0.00	0.00	0.00	0.00	714,651.00	602,053.70	
600.00	0.00	0.00	600.00	-3,227.50	0.00	0.00	0.00	0.00	714,651.00	602,053.70	
700.00	0.00	0.00	700.00	-3,127.50	0.00	0.00	0.00	0.00	714,651.00	602,053.70	
800.00	0.00	0.00	800.00	-3,027.50	0.00	0.00	0.00	0.00	714,651.00	602,053.70	
900.00	0.00	0.00	900.00	-2,927.50	0.00	0.00	0.00	0.00	714,651.00	602,053.70	
1,000.00	0.00	0.00	1,000.00	-2,827.50	0.00	0.00	0.00	0.00	714,651.00	602,053.70	
1,100.00	0.00	0.00	1,100.00	-2,727.50	0.00	0.00	0.00	0.00	714,651.00	602,053.70	
1,200.00	0.00	0.00	1,200.00	-2,627.50	0.00	0.00	0.00	0.00	714,651.00	602,053.70	
1,300.00	0.00	0.00	1,300.00	-2,527.50	0.00	0.00	0.00	0.00	714,651.00	602,053.70	
1,400.00	0.00	0.00	1,400.00	-2,427.50	0.00	0.00	0.00	0.00	714,651.00	602,053.70	
1,500.00	0.00	0.00	1,500.00	-2,327.50	0.00	0.00	0.00	0.00	714,651.00	602,053.70	
1,600.00	0.00	0.00	1,600.00	-2,227.50	0.00	0.00	0.00	0.00	714,651.00	602,053.70	
1,700.00	0.00	0.00	1,700.00	-2,127.50	0.00	0.00	0.00	0.00	714,651.00	602,053.70	
1,800.00	0.00	0.00	1,800.00	-2,027.50	0.00	0.00	0.00	0.00	714,651.00	602,053.70	
1,900.00	0.00	0.00	1,900.00	-1,927.50	0.00	0.00	0.00	0.00	714,651.00	602,053.70	
2,000.00	0.00	0.00	2,000.00	-1,827.50	0.00	0.00	0.00	0.00	714,651.00	602,053.70	
2,100.00	0.00	0.00	2,100.00	-1,727.50	0.00	0.00	0.00	0.00	714,651.00	602,053.70	
2,200.00	0.00	0.00	2,200.00	-1,627.50	0.00	0.00	0.00	0.00	714,651.00	602,053.70	
2,300.00	0.00	0.00	2,300.00	-1,527.50	0.00	0.00	0.00	0.00	714,651.00	602,053.70	
2,400.00	0.00	0.00	2,400.00	-1,427.50	0.00	0.00	0.00	0.00	714,651.00	602,053.70	
2,500.00	0.00	0.00	2,500.00	-1,327.50	0.00	0.00	0.00	0.00	714,651.00	602,053.70	
2,600.00	0.00	0.00	2,600.00	-1,227.50	0.00	0.00	0.00	0.00	714,651.00	602,053.70	

Pathfinder Energy Services
Pathfinder X & Y Survey Report



Company:	Mack Energy	Local Co-ordinate Reference:	Well Eagle Nest Federal #1H
Project:	Eddy County	TVD Reference:	EST RKB @ 3827.50ft
Site:	Eagle Nest Federal #1H	MD Reference:	EST RKB @ 3827.50ft
Well:	Eagle Nest Federal #1H	North Reference:	Grd
Wellbore:	Original Hole	Survey Calculation Method:	Minimum Curvature
Design:	Plan #1	Database:	EDM 2003.16 Single User Db

Planned Survey												
MD (ft)	Inc (°)	Azi (°)	TVD (ft)	TVDSS (ft)	N/S (ft)	E/W (ft)	V. Sec (ft)	DLeg (°/100ft)	Northing (ft)	Easting (ft)		
2,700.00	0.00	0.00	2,700.00	-1,127.50	0.00	0.00	0.00	0.00	714,651.00	602,053.70		
2,800.00	0.00	0.00	2,800.00	-1,027.50	0.00	0.00	0.00	0.00	714,651.00	602,053.70		
2,900.00	0.00	0.00	2,900.00	-927.50	0.00	0.00	0.00	0.00	714,651.00	602,053.70		
3,000.00	0.00	0.00	3,000.00	-827.50	0.00	0.00	0.00	0.00	714,651.00	602,053.70		
3,100.00	0.00	0.00	3,100.00	-727.50	0.00	0.00	0.00	0.00	714,651.00	602,053.70		
3,200.00	0.00	0.00	3,200.00	-627.50	0.00	0.00	0.00	0.00	714,651.00	602,053.70		
3,300.00	0.00	0.00	3,300.00	-527.50	0.00	0.00	0.00	0.00	714,651.00	602,053.70		
3,400.00	0.00	0.00	3,400.00	-427.50	0.00	0.00	0.00	0.00	714,651.00	602,053.70		
3,500.00	0.00	0.00	3,500.00	-327.50	0.00	0.00	0.00	0.00	714,651.00	602,053.70		
3,600.00	0.00	0.00	3,600.00	-227.50	0.00	0.00	0.00	0.00	714,651.00	602,053.70		
3,700.00	0.00	0.00	3,700.00	-127.50	0.00	0.00	0.00	0.00	714,651.00	602,053.70		
3,800.00	0.00	0.00	3,800.00	-27.50	0.00	0.00	0.00	0.00	714,651.00	602,053.70		
3,900.00	0.00	0.00	3,900.00	72.50	0.00	0.00	0.00	0.00	714,651.00	602,053.70		
4,000.00	0.00	0.00	4,000.00	172.50	0.00	0.00	0.00	0.00	714,651.00	602,053.70		
4,100.00	0.00	0.00	4,100.00	272.50	0.00	0.00	0.00	0.00	714,651.00	602,053.70		
4,200.00	0.00	0.00	4,200.00	372.50	0.00	0.00	0.00	0.00	714,651.00	602,053.70		
4,300.00	0.00	0.00	4,300.00	472.50	0.00	0.00	0.00	0.00	714,651.00	602,053.70		
4,400.00	0.00	0.00	4,400.00	572.50	0.00	0.00	0.00	0.00	714,651.00	602,053.70		
4,500.00	0.00	0.00	4,500.00	672.50	0.00	0.00	0.00	0.00	714,651.00	602,053.70		
4,600.00	0.00	0.00	4,600.00	772.50	0.00	0.00	0.00	0.00	714,651.00	602,053.70		
4,700.00	0.00	0.00	4,700.00	872.50	0.00	0.00	0.00	0.00	714,651.00	602,053.70		
4,800.00	0.00	0.00	4,800.00	972.50	0.00	0.00	0.00	0.00	714,651.00	602,053.70		
4,900.00	0.00	0.00	4,900.00	1,072.50	0.00	0.00	0.00	0.00	714,651.00	602,053.70		
5,000.00	0.00	0.00	5,000.00	1,172.50	0.00	0.00	0.00	0.00	714,651.00	602,053.70		
5,100.00	0.00	0.00	5,100.00	1,272.50	0.00	0.00	0.00	0.00	714,651.00	602,053.70		
5,200.00	0.00	0.00	5,200.00	1,372.50	0.00	0.00	0.00	0.00	714,651.00	602,053.70		
5,300.00	0.00	0.00	5,300.00	1,472.50	0.00	0.00	0.00	0.00	714,651.00	602,053.70		

Pathfinder Energy Services
Pathfinder X & Y Survey Report



Company:	Mack Energy	Local Co-ordinate Reference:	Well Eagle Nest Federal #1H
Project:	Eddy County	TVD Reference:	EST RKB @ 3827.50ft
Site:	Eagle Nest Federal #1H	MD Reference:	EST RKB @ 3827.50ft
Well:	Eagle Nest Federal #1H	North Reference:	Grid
Wellbore:	Original Hole	Survey Calculation Method:	Minimum Curvature
Design:	Plan #1	Database:	EDM 2003.16 Single User Db

Planned Survey												
MD (ft)	Inc (°)	Azi (°)	TVD (ft)	TVDSS (ft)	N/S (ft)	E/W (ft)	V. Sec (ft)	DLeg (°/100ft)	Northing (ft)	Easting (ft)		
5,400.00	0.00	0.00	5,400.00	1,572.50	0.00	0.00	0.00	0.00	714,651.00	602,053.70		
5,500.00	0.00	0.00	5,500.00	1,672.50	0.00	0.00	0.00	0.00	714,651.00	602,053.70		
5,600.00	0.00	0.00	5,600.00	1,772.50	0.00	0.00	0.00	0.00	714,651.00	602,053.70		
5,700.00	0.00	0.00	5,700.00	1,872.50	0.00	0.00	0.00	0.00	714,651.00	602,053.70		
5,800.00	0.00	0.00	5,800.00	1,972.50	0.00	0.00	0.00	0.00	714,651.00	602,053.70		
5,900.00	0.00	0.00	5,900.00	2,072.50	0.00	0.00	0.00	0.00	714,651.00	602,053.70		
6,000.00	0.00	0.00	6,000.00	2,172.50	0.00	0.00	0.00	0.00	714,651.00	602,053.70		
6,100.00	0.00	0.00	6,100.00	2,272.50	0.00	0.00	0.00	0.00	714,651.00	602,053.70		
6,200.00	0.00	0.00	6,200.00	2,372.50	0.00	0.00	0.00	0.00	714,651.00	602,053.70		
6,300.00	0.00	0.00	6,300.00	2,472.50	0.00	0.00	0.00	0.00	714,651.00	602,053.70		
6,400.00	0.00	0.00	6,400.00	2,572.50	0.00	0.00	0.00	0.00	714,651.00	602,053.70		
6,500.00	0.00	0.00	6,500.00	2,672.50	0.00	0.00	0.00	0.00	714,651.00	602,053.70		
6,600.00	0.00	0.00	6,600.00	2,772.50	0.00	0.00	0.00	0.00	714,651.00	602,053.70		
6,700.00	0.00	0.00	6,700.00	2,872.50	0.00	0.00	0.00	0.00	714,651.00	602,053.70		
6,800.00	0.00	0.00	6,800.00	2,972.50	0.00	0.00	0.00	0.00	714,651.00	602,053.70		
6,830.35	0.00	0.00	6,830.35	3,002.85	0.00	0.00	0.00	0.00	714,651.00	602,053.70		
6,850.00	1.96	89.94	6,850.00	3,022.50	0.00	0.34	0.34	10.00	714,651.00	602,054.04		
6,900.00	6.96	89.94	6,899.83	3,072.33	0.00	4.23	4.23	10.00	714,651.00	602,057.93		
6,950.00	11.96	89.94	6,949.13	3,121.63	0.01	12.45	12.45	10.00	714,651.01	602,066.15		
7,000.00	16.96	89.94	6,997.53	3,170.03	0.03	24.93	24.93	10.00	714,651.03	602,078.63		
7,050.00	21.96	89.94	7,044.66	3,217.16	0.04	41.59	41.59	10.00	714,651.04	602,095.29		
7,100.00	26.96	89.94	7,090.16	3,262.66	0.07	62.29	62.29	10.00	714,651.07	602,115.99		
7,150.00	31.96	89.94	7,133.67	3,306.17	0.09	86.88	86.88	10.00	714,651.09	602,140.58		
7,200.00	36.96	89.94	7,174.89	3,347.39	0.12	115.16	115.16	10.00	714,651.12	602,168.86		
7,250.00	41.96	89.94	7,213.47	3,385.97	0.15	146.93	146.93	10.00	714,651.15	602,200.63		
7,300.00	46.96	89.94	7,249.15	3,421.65	0.19	181.95	181.95	10.00	714,651.19	602,235.65		
7,350.00	51.96	89.94	7,281.63	3,454.13	0.23	219.93	219.93	10.00	714,651.23	602,273.63		

Pathfinder Energy Services
Pathfinder X & Y Survey Report



Company:	Mack Energy	Local Co-ordinate Reference:	Well Eagle Nest Federal #1H
Project:	Eddy County	TVD Reference:	EST RKB @ 3827.50ft
Site:	Eagle Nest Federal #1H	MD Reference:	EST RKB @ 3827.50ft
Well:	Eagle Nest Federal #1H	North Reference:	Grid
Wellbore:	Original Hole	Survey Calculation Method:	Minimum Curvature
Design:	Plan #1	Database:	EDM 2003.16 Single User Db

Planned Survey											
MD (ft)	Inc (°)	Azi (°)	TVD (ft)	TVDSS (ft)	N/S (ft)	E/W (ft)	V. Sec (ft)	DLeg (°/100ft)	Northing (ft)	Easting (ft)	
7,400.00	56.96	89.94	7,310.68	3,483.18	0.27	260.61	260.61	10.00	714,651.27	602,314.31	
7,450.00	61.96	89.94	7,336.08	3,508.58	0.32	303.66	303.66	10.00	714,651.32	602,357.36	
7,500.00	66.96	89.94	7,357.62	3,530.12	0.37	348.76	348.76	10.00	714,651.37	602,402.46	
7,550.00	71.96	89.94	7,375.16	3,547.66	0.41	395.57	395.57	10.00	714,651.41	602,449.27	
7,600.00	76.96	89.94	7,388.54	3,561.04	0.46	443.73	443.73	10.00	714,651.46	602,497.43	
7,650.00	81.96	89.94	7,397.68	3,570.18	0.52	492.87	492.87	10.00	714,651.52	602,546.57	
7,700.00	86.96	89.94	7,402.50	3,575.00	0.57	542.62	542.62	10.00	714,651.57	602,596.32	
7,727.45	89.71	89.94	7,403.30	3,575.80	0.60	570.06	570.06	10.00	714,651.60	602,623.76	
LP (EN1)											
7,800.00	89.71	89.94	7,403.67	3,576.17	0.67	642.61	642.61	0.00	714,651.67	602,696.31	
7,900.00	89.71	89.94	7,404.17	3,576.67	0.78	742.61	742.61	0.00	714,651.78	602,796.31	
8,000.00	89.71	89.94	7,404.68	3,577.18	0.88	842.60	842.60	0.00	714,651.88	602,896.30	
8,100.00	89.71	89.94	7,405.19	3,577.69	0.99	942.60	942.60	0.00	714,651.99	602,996.30	
8,157.40	89.71	89.94	7,405.48	3,577.98	1.05	1,000.00	1,000.00	0.00	714,652.05	603,053.70	
LT1 (EN1) @ 1000' VS											
8,176.60	89.42	89.96	7,405.62	3,578.12	1.06	1,019.20	1,019.20	1.50	714,652.06	603,072.90	
8,200.00	89.42	89.96	7,405.86	3,578.36	1.08	1,042.60	1,042.60	0.00	714,652.08	603,096.30	
8,300.00	89.42	89.96	7,406.86	3,579.36	1.14	1,142.59	1,142.60	0.00	714,652.14	603,196.29	
8,400.00	89.42	89.96	7,407.87	3,580.37	1.21	1,242.59	1,242.59	0.00	714,652.21	603,296.29	
8,500.00	89.42	89.96	7,408.88	3,581.38	1.27	1,342.58	1,342.59	0.00	714,652.27	603,396.28	
8,600.00	89.42	89.96	7,409.89	3,582.39	1.34	1,442.58	1,442.58	0.00	714,652.34	603,496.28	
8,700.00	89.42	89.96	7,410.89	3,583.39	1.40	1,542.57	1,542.58	0.00	714,652.40	603,596.27	
8,800.00	89.42	89.96	7,411.90	3,584.40	1.46	1,642.57	1,642.57	0.00	714,652.46	603,696.27	
8,900.00	89.42	89.96	7,412.91	3,585.41	1.53	1,742.56	1,742.56	0.00	714,652.53	603,796.26	
9,000.00	89.42	89.96	7,413.91	3,586.41	1.59	1,842.56	1,842.56	0.00	714,652.59	603,896.26	
9,100.00	89.42	89.96	7,414.92	3,587.42	1.66	1,942.55	1,942.55	0.00	714,652.66	603,996.25	

Pathfinder Energy Services
Pathfinder X & Y Survey Report



Company:	Mack Energy	Local Co-ordinate Reference:	Well Eagle Nest Federal #1H
Project:	Eddy County	TVD Reference:	EST RKB @ 3827.50ft
Site:	Eagle Nest Federal #1H	MD Reference:	EST RKB @ 3827.50ft
Well:	Eagle Nest Federal #1H	North Reference:	Grid
Wellbore:	Original Hole	Survey Calculation Method:	Minimum Curvature
Design:	Plan #1	Database:	EDM 2003.16 Single User Db

Planned Survey:											
MD (ft)	Inc (°)	Azi (°)	TVD (ft)	TVDSS (ft)	N/S (ft)	E/W (ft)	V. Sec (ft)	DLeg (°/100ft)	Northing (ft)	Easting (ft)	
9,157.45	89.42	89.96	7,415.50	3,588.00	1.69	2,000.00	2,000.00	0.00	714,652.69	604,053.70	
LT2 (EN1) @ 2000' VS											
9,165.54	89.54	89.94	7,415.57	3,588.07	1.70	2,008.09	2,008.09	1.50	714,652.70	604,061.79	
9,200.00	89.54	89.94	7,415.85	3,588.35	1.74	2,042.55	2,042.55	0.00	714,652.74	604,096.25	
9,300.00	89.54	89.94	7,416.65	3,589.15	1.84	2,142.55	2,142.55	0.00	714,652.84	604,196.25	
9,400.00	89.54	89.94	7,417.45	3,589.95	1.95	2,242.54	2,242.54	0.00	714,652.95	604,296.24	
9,500.00	89.54	89.94	7,418.25	3,590.75	2.05	2,342.54	2,342.54	0.00	714,653.05	604,396.24	
9,600.00	89.54	89.94	7,419.04	3,591.54	2.16	2,442.54	2,442.54	0.00	714,653.16	604,496.24	
9,700.00	89.54	89.94	7,419.84	3,592.34	2.26	2,542.53	2,542.53	0.00	714,653.26	604,596.23	
9,800.00	89.54	89.94	7,420.64	3,593.14	2.37	2,642.53	2,642.53	0.00	714,653.37	604,696.23	
9,900.00	89.54	89.94	7,421.44	3,593.94	2.47	2,742.53	2,742.53	0.00	714,653.47	604,796.23	
10,000.00	89.54	89.94	7,422.24	3,594.74	2.58	2,842.52	2,842.52	0.00	714,653.58	604,896.22	
10,100.00	89.54	89.94	7,423.04	3,595.54	2.68	2,942.52	2,942.52	0.00	714,653.68	604,996.22	
10,157.48	89.54	89.94	7,423.50	3,596.00	2.74	3,000.00	3,000.00	0.00	714,653.74	605,053.70	
LT3 (EN1) @ 3000' VS											
10,169.04	89.37	89.94	7,423.61	3,596.11	2.75	3,011.56	3,011.56	1.50	714,653.75	605,065.26	
10,200.00	89.37	89.94	7,423.95	3,596.45	2.79	3,042.52	3,042.52	0.00	714,653.79	605,096.22	
10,300.00	89.37	89.94	7,425.05	3,597.55	2.89	3,142.51	3,142.51	0.00	714,653.89	605,196.21	
10,400.00	89.37	89.94	7,426.15	3,598.65	3.00	3,242.50	3,242.51	0.00	714,654.00	605,296.20	
10,500.00	89.37	89.94	7,427.26	3,599.76	3.10	3,342.50	3,342.50	0.00	714,654.10	605,396.20	
10,600.00	89.37	89.94	7,428.36	3,600.86	3.20	3,442.49	3,442.49	0.00	714,654.20	605,496.19	
10,700.00	89.37	89.94	7,429.46	3,601.96	3.31	3,542.49	3,542.49	0.00	714,654.31	605,596.19	
10,800.00	89.37	89.94	7,430.56	3,603.06	3.41	3,642.48	3,642.48	0.00	714,654.41	605,696.18	
10,900.00	89.37	89.94	7,431.66	3,604.16	3.52	3,742.47	3,742.48	0.00	714,654.52	605,796.17	
11,000.00	89.37	89.94	7,432.76	3,605.26	3.62	3,842.47	3,842.47	0.00	714,654.62	605,896.17	
11,100.00	89.37	89.94	7,433.87	3,606.37	3.73	3,942.46	3,942.46	0.00	714,654.73	605,996.16	
11,157.54	89.37	89.94	7,434.50	3,607.00	3.79	4,000.00	4,000.00	0.00	714,654.79	606,053.70	
LT4 (EN1) @ 4000' VS											

Pathfinder Energy Services
Pathfinder X & Y Survey Report



Company:	Mack Energy	Local Co-ordinate Reference:	Well Eagle Nest Federal #1H
Project:	Eddy County	TVD Reference:	EST RKB @ 3827.50ft
Site:	Eagle Nest Federal #1H	MD Reference:	EST RKB @ 3827.50ft
Well:	Eagle Nest Federal #1H	North Reference:	Grid
Wellbore:	Original Hole	Survey Calculation Method:	Minimum Curvature
Design:	Plan #1	Database:	EDM 2003.16 Single User Db

Planned Survey											
MD (ft)	Inc (°)	Azi (°)	TVD (ft)	TVDSS (ft)	N/S (ft)	E/W (ft)	V. Sec (ft)	DLeg (°/100ft)	Northing (ft)	Easting (ft)	
11,188.15	88.91	89.92	7,434.96	3,607.46	3.83	4,030.60	4,030.60	1.50	714,654.83	606,084.30	
11,200.00	88.91	89.92	7,435.19	3,607.69	3.84	4,042.45	4,042.45	0.00	714,654.84	606,096.15	
11,300.00	88.91	89.92	7,437.09	3,609.59	3.99	4,142.43	4,142.44	0.00	714,654.99	606,196.13	
11,400.00	88.91	89.92	7,438.99	3,611.49	4.13	4,242.42	4,242.42	0.00	714,655.13	606,296.12	
11,500.00	88.91	89.92	7,440.89	3,613.39	4.28	4,342.40	4,342.40	0.00	714,655.28	606,396.10	
11,584.62	88.91	89.92	7,442.50	3,615.00	4.40	4,427.00	4,427.00	0.00	714,655.40	606,480.70	
PBHL (EN1)											

Pathfinder Energy Services
Pathfinder X & Y Survey Report



Company:	Mack Energy	Local Co-ordinate Reference:	Well Eagle Nest Federal #1H
Project:	Eddy County	TVD Reference:	EST RKB @ 3827.50ft
Site:	Eagle Nest Federal #1H	MD Reference:	EST RKB @ 3827.50ft
Well:	Eagle Nest Federal #1H	North Reference:	Grid
Wellbore:	Original Hole	Survey Calculation Method:	Minimum Curvature
Design:	Plan #1	Database:	EDM 2003.16 Single User Db

Targets									
Target Name	hit/miss target	Dip Angle (°)	Dip Dir. (°)	TVD (ft)	+N/-S (ft)	+E/-W (ft)	Northing (ft)	Easting (ft)	Latitude Longitude
LT4 (EN1) @ 4000' V: - plan hits target - Point		0.00	0.00	7,434.50	3.79	4,000.00	714,654.789	606,053.700	32° 57' 51.045 N 103° 59' 15.189 W
LP (EN1) - plan hits target - Point		0.00	0.00	7,403.30	0.20	570.06	714,651.200	602,623.760	32° 57' 51.119 N 103° 59' 55.448 W
LT1 (EN1) @ 1000' V: - plan hits target - Point		0.00	0.00	7,405.50	0.65	1,000.00	714,651.647	603,053.700	32° 57' 51.110 N 103° 59' 50.401 W
LT2 (EN1) @ 2000' V: - plan hits target - Point		0.00	0.00	7,415.50	1.69	2,000.00	714,652.694	604,053.700	32° 57' 51.089 N 103° 59' 38.664 W
LT3 (EN1) @ 3000' V: - plan hits target - Point		0.00	0.00	7,423.50	2.74	3,000.00	714,653.742	605,053.700	32° 57' 51.067 N 103° 59' 26.926 W
PBHL (EN1) - plan hits target - Point		0.00	0.00	7,442.50	4.40	4,427.00	714,655.400	606,480.700	32° 57' 51.037 N 103° 59' 10.177 W

Checked By: _____	Approved By: _____	Date: _____
-------------------	--------------------	-------------

SURFACE USE AND OPERATING PLAN

1. Existing & Proposed Access Roads

- A. The well site and elevation plat for the proposed well is shown in Exhibit #1. It was staked by John West Engineering, Hobbs, NM.
- B. All roads to the location are shown in Exhibit below. The existing lease roads are illustrated and are adequate for travel during drilling and production operations. Upgrading existing roads prior to drilling well will be done where necessary.
- C. Directions to Location: From the intersection of CR 217 and U.S. Hwy #82, go north on 217 9.75 miles, turn left go northwest 1 mile, turn left go south-southwest 0.6 mile to a proposed road survey. Follow Road survey approx 850' to the location.
- D. Routine grading and maintenance of existing roads will be conducted as necessary to maintain their condition as long as any operations continue on this lease.

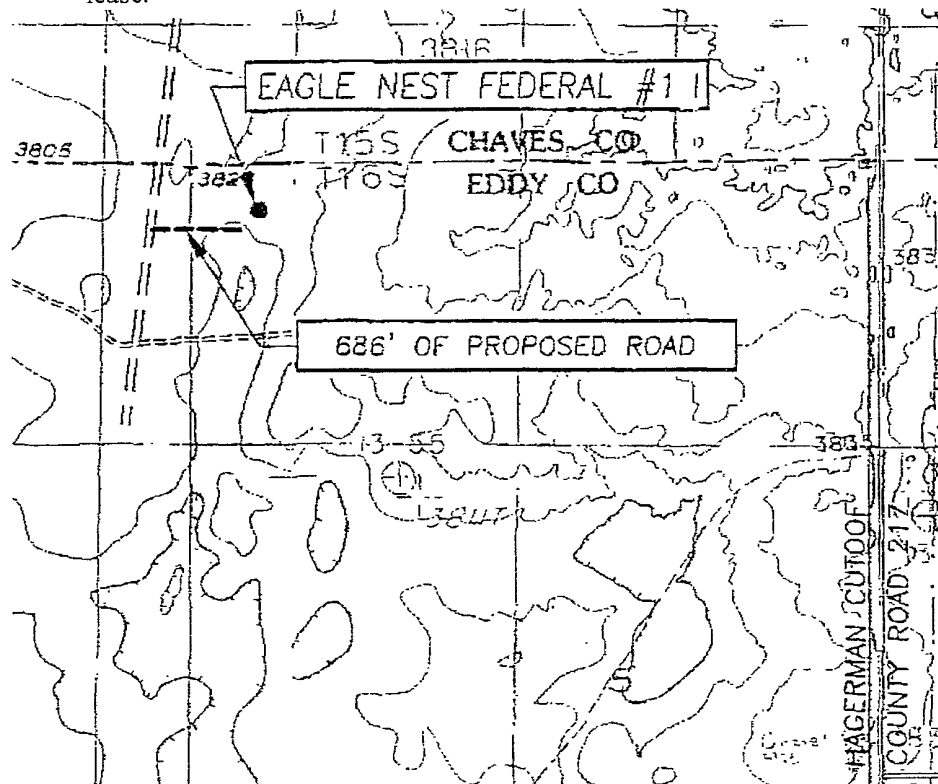


Exhibit #4

2. Proposed Access Road:

Exhibit #3 shows the 686' of new access road. The road will be constructed as follows:

- A. The Maximum width of the running surface will be 14'. The road will be crowned and ditched and constructed of 6" rolled and compacted caliche. Ditches will be at 3:1 slope and 4 feet wide. Water will be diverted where necessary to avoid ponding, prevent erosion, maintain good drainage, and to be consistent with local drainage patterns.
- B. The average grade will be less than 1%.
- C. No turnouts are planned.
- D. No culverts, cattleguard, gates, low water crossings or fence cuts are necessary.
- E. Surfacing material will consist of native caliche. Caliche will be obtained from the nearest BLM approved caliche pit.
- F. The proposed access road as shown in Exhibit #3 has been centerline flagged by John West Engineering, Hobbs, New Mexico.

3. Location of Existing Wells & Proposed flow lines for New Wells:

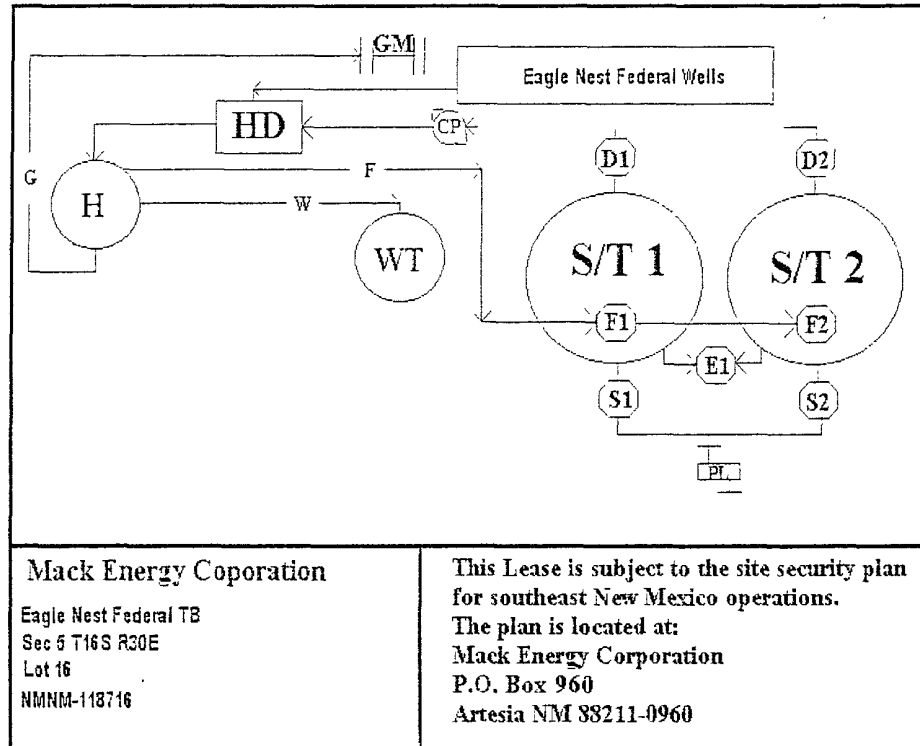
Exhibit #4 shows all existing wells within a one-mile radius of this well. Proposed flow lines, will follow an archaeologically approved route to the #4 well, where a TB will be built.

4. Location of Existing and/or Proposed Facilities:

- A. Mack Energy Corporation does not operate a production facility on this lease.
- B. If the well is productive, contemplated facilities will be as follows:
 - 1) Abo Completion: Will be sent to the Eagle Nest Federal TB located at the #4 well. The Facility is shown in Exhibit #5.
 - 2) The tank battery and facilities including all flow lines and piping will be installed according to API specifications.
 - 3) Any additional caliche will be obtained from a BLM approved caliche pit. Any additional construction materials will be purchased from contractors.

- 4) It will be necessary to run electric power if this well is productive. Power will be run by CVE and they will send in a separate plan for power.

Exhibit #5



A. If the well is productive, rehabilitation plans are as follows:

- 1) Top soil removed from the drill site will be used to recontour the surrounding area to the original natural level, as nearly as possible, and reseeded as per BLM specifications.

5. Location and Type of Water Supply:

The well will be drilled with combination brine and fresh water mud system as outlined in the drilling program. The water will be obtained from commercial water stations in the area and hauled to location by transport truck over the existing and proposed access roads shown in Exhibit #4. If a commercial fresh water source is nearby, fasline may be laid along existing road ROW's and fresh water pumped to the well. No water well will be drilled on the location.

6. Source of Construction Materials:

All caliche required for construction of the drill pad and proposed new access road (approximately 2500 cubic yards) will be obtained from a BLM approved caliche pit.

7. Methods of Handling Water Disposal:

- A. Drill cuttings not retained for evaluation purposes will be disposed into the steel tanks and hauled to an approved facility.
- B. Drilling fluids will be contained in steel tanks using a closed loop system.
- C. Water produced from the well during completion may be disposed into a steel tank. After the well is permanently placed on production, produced water will be collected in tanks (fiberglass) until pumped to an approved disposal system; produced oil will be collected in steel tanks until sold.
- D. Garbage and trash produced during drilling or completion operations will be collected in a trash bin and hauled to an approved landfill. All water and fluids will be disposed of into an approved facility. No toxic waste or hazardous chemicals will be produced by this operation.
- E. After the rig is moved out and the well is either completed or abandoned, all waste materials will be cleaned up within 30 days. In the event of a dry hole only a dry hole marker will remain.

8. Ancillary Facilities:

No airstrip, campsite or other facilities will be built as a result of the operation on this well.

9. Well Site Layout:

- A. The drill pad layout, with elevations staked by John West Engineering, is shown in Exhibit #6. Dimensions of the pad are shown. Topsoil, if available, will be stockpiled per BLM specifications. Because the pad is almost level no major cuts will be required.
- B. Diagram below shows the proposed orientation of the location. No permanent living facilities are planned, but a temporary foreman/toolpusher's trailer will be on location during the drilling operations.

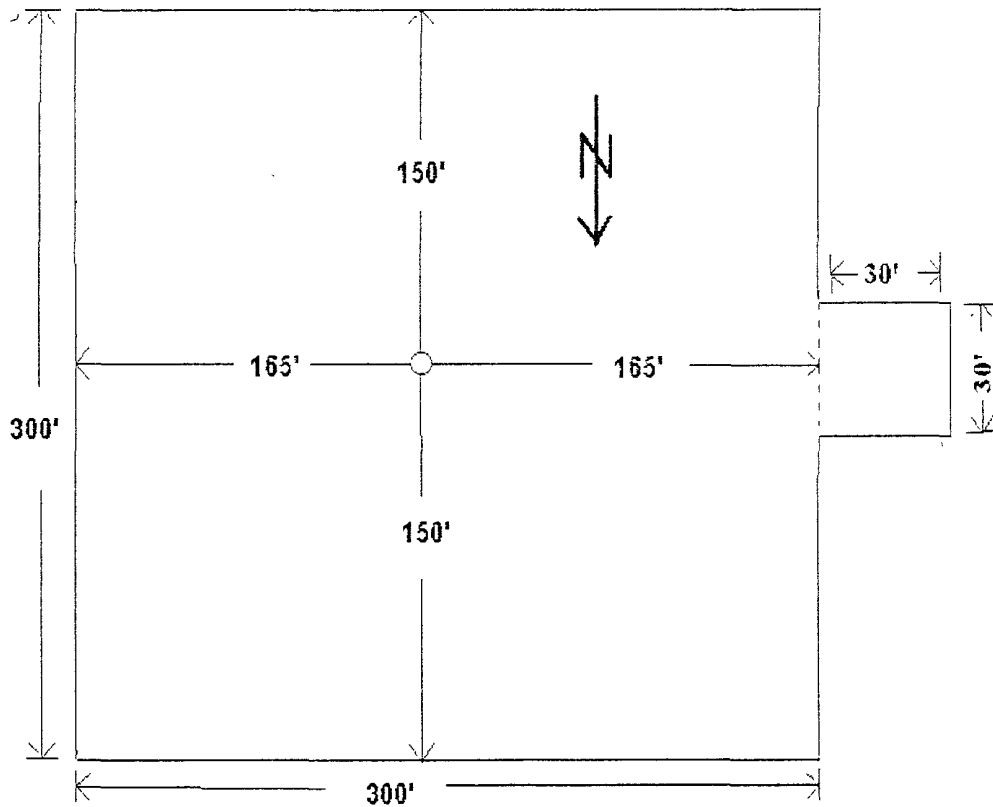


Exhibit #6

10. Plans for Restoration of the Surface:

Attached to Form 3160-3
Mack Energy Corporation
Eagle Nest Federal #1
355 FNL & 530 FWL, Sec. 5 T16S R30E
Eddy County, NM

- A. Upon completion of the proposed operations, if the well is completed, any additional caliche required for facilities will be obtained from a BLM approved caliche pit.
- B. In the event of a dry hole. Topsoil removed from the drill site will be used to recontour the area to its original natural level and reseeded as per BLM specifications.

11. Surface Ownership:

The well site and lease is located entirely on Federal surface. We have notified the surface lessee of the impending operations. According to BLM the lessee is Bogel Limited Company, Lewis Derrick, P.O. Box 460 Dexter, NM 88230.

12. Other Information:

- A. The area around the well site is grassland and the topsoil is sandy. The vegetation is native scrub grass with sagebrush.
- B. There is no permanent or live water in the immediate area.
- C. A Cultural Resources Examination has been requested and will be forwarded to your office in the near future.

13. Lessee's and Operator's Representative:

The Mack Energy Corporation representative responsible for assuring compliance with the surface use plan is as follows:

Jerry W. Sherrell
Mack Energy Corporation
P.O. Box 960
Artesia, NM 88211-0960
Phone (575) 748-1288 (office)

Mack Energy Corporation

Hydrogen Sulfide Drilling Operation Plan

I. HYDROGEN SULFIDE TRAINING

All personnel, whether regularly assigned, contracted, or employed on an unscheduled basis, will receive training from a qualified instructor in the following areas prior to commencing drilling operations on this well:

1. The hazards and characteristics of hydrogen sulfide (H₂S)
2. The proper use and maintenance of personal protective equipment and life support systems.
3. The proper use of H₂S detectors, alarms, warning systems, briefing areas, evacuation procedures, and prevailing winds.
4. The proper techniques for first aid and rescue procedures.

In addition, supervisory personnel will be trained in the following areas:

1. The effects of H₂S on metal components. If high tensile tubular are to be used, personnel will be trained in their special maintenance requirements.
2. Corrective action and shut-in procedures when drilling or reworking a well and blowout prevention and well control procedures.
3. The contents and requirements of the H₂S Drilling Operations Plan and Public Protection Plan.

There will be an initial training session just prior to encountering a known or probable H₂S zone (within 3 days or 500 feet) and weekly H₂S and well control drills for all personnel in each crew. The initial training session shall include a review of the site specific H₂S Drilling Operations Plan and the Public Protection Plan. The concentrations of H₂S of wells in this area from surface to TD are low enough that a contingency plan is not required.

II. H2S SAFETY EQUIPMENT AND SYSTEMS

Note: All H2S safety equipment and systems will be installed, tested, and operational when drilling reaches a depth of 500 feet above, or three days prior to penetrating the first zone containing or reasonable expected to contain H2S.

1. Well Control Equipment:

- A. Flare line.
- B. Choke manifold.
- C. Blind rams and pipe rams to accommodate all pipe sizes with properly sized closing unit.
- D. Auxiliary equipment may include if applicable: annular preventer & rotating head.

2. Protective equipment for essential personnel:

- A. Mark II Survive air 30-minute units located in the doghouse and at briefing areas, as indicated on well site diagram.

3. H2S detection and monitoring equipment:

- A. 1 portable H2S monitors positioned on location for best coverage and response. These units have warning lights and audible sirens when H2S levels of 20 PPM are reached.

4. Visual warning systems:

- A. Wind direction indicators as shown on well site diagram (Exhibit #8).
- B. Caution/Danger signs (Exhibit #7) shall be posted on roads providing direct access to location. Signs will be painted a high visibility yellow with black lettering of sufficient size to be readable at a reasonable distance from the immediate location. Bilingual signs will be used, when appropriate. See example attached.

5. Mud program:

- A. The mud program has been designed to minimize the volume of H2S circulated to surface. Proper mud weight, safe drilling practices, and the use of H2S scavengers will minimize hazards when penetrating H2S bearing zones.

6. Metallurgy:

- A. All drill strings, casings, tubing, wellhead, blowout preventer, drilling spool, kill lines, choke manifold and lines, and valves shall be suitable for H₂S service.
- B. All elastomers used for packing and seals shall be H₂S trim.

7. Communication:

- A. Radio communications in company vehicles including cellular telephone and 2-way radio.
- B. Land line (telephone) communication at Office.

8. Well testing:

- A. Drill stem testing will be performed with a minimum number of personnel in the immediate vicinity, which are necessary to safely and adequately conduct the test. The drill stem testing will be conducted during daylight hours and formation fluids will not be flowed to the surface. All drill-stem-testing operations conducted in an H₂S environment will use the closed chamber method of testing.
- B. There will be no drill stem testing.

EXHIBIT #7**WARNING**

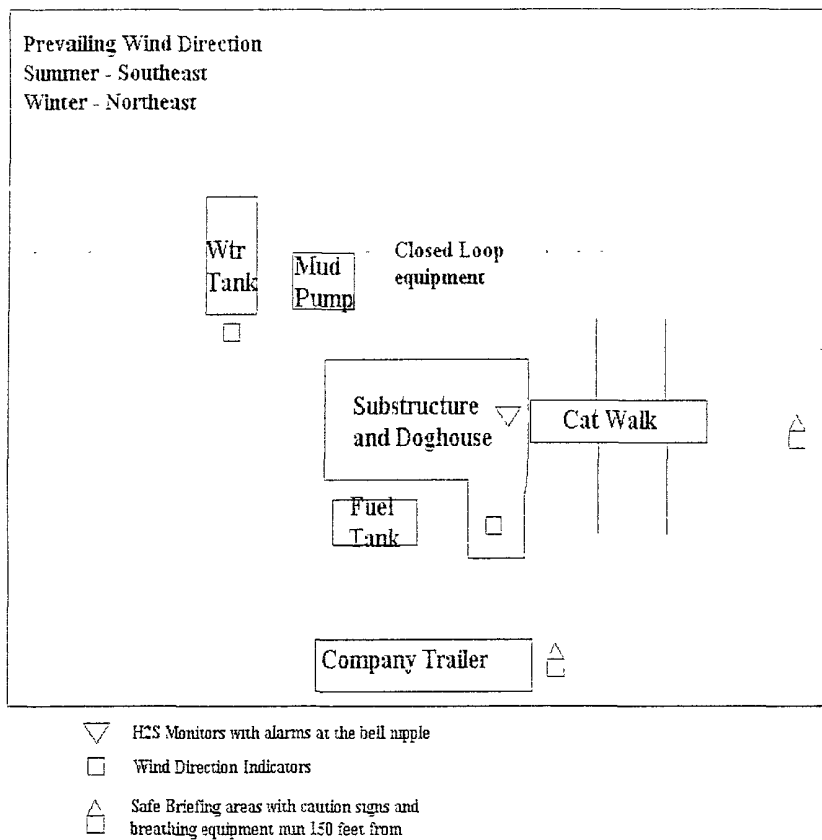
**YOU ARE ENTERING AN H₂S
AUTHORIZED PERSONNEL ONLY**

- 1. BEARDS OR CONTACT LENSES NOT ALLOWED**
- 2. HARD HATS REQUIRED**
- 3. SMOKING IN DESIGNATED AREAS ONLY**
- 4. BE WIND CONSCIOUS AT ALL TIMES**
- 5. CHECK WITH MACK ENERGY FOREMAN AT OFFICE**

MACK ENERGY CORPORATION

1-575-748-1288

DRILLING LOCATION H₂S SAFETY EQUIPMENT
Exhibit # 8



Attachment to Exhibit #9
NOTES REGARDING THE BLOWOUT PREVENTERS
Eagle Nest Federal #1
Chaves County, New Mexico

1. Drilling nipple to be so constructed that it can be removed without use of a welder through rotary table opening, with minimum I.D. equal to preventer bore.
2. Wear ring to be properly installed in head.
3. Blow out preventer and all fittings must be in good condition, 2000 psi WP minimum.
4. All fittings to be flanged.
5. Safety valve must be available on rig floor at all times with proper connections, valve to be full 2000 psi WP minimum.
6. All choke and fill lines to be securely anchored especially ends of choke lines.
7. Equipment through which bit must pass shall be at least as large as the diameter of the casing being drilled through.
8. Kelly cock on Kelly.
9. Extension wrenches and hands wheels to be properly installed.
10. Blow out preventer control to be located as close to driller's position as feasible.
11. Blow out preventer closing equipment to include minimum 40-gallon accumulator, two independent sources of pump power on each closing unit installation all API specifications.

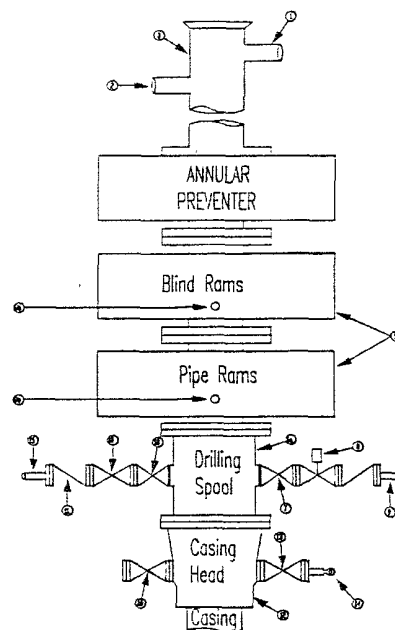
Mack Energy Corporation
Minimum Blowout Preventer Requirements
 3000 psi Working Pressure
 3 MWP
 EXHIBIT #10

Stack Requirements

NO	Items	Min I D	Min Nominal
1	Flowline		2"
2	Fill up line		2"
3	Drilling nipple		
4	Annular preventer		
5	Two single or one dual hydraulically operated rams		
6a	Drilling spool with 2" min. kill line and 3" min choke line outlets		2" Choke
6b	2" min. kill line and 3" min. choke line outlets in ram (Alternate to 6a above)		
7	Valve Gate Plug	3 1/8	
8	Gate valve-power operated	3 1/8	
9	Line to choke manifold		3"
10	Valve Gate Plug	2 1/16	
11	Check valve	2 1/16	
12	Casing head		
13	Valve Gate Plug	1 13/16	
14	Pressure gauge with needle valve		
15	Kill line to rig mud pump manifold		2"

OPTIONAL

16	Flanged Valve	1 13/16
----	---------------	---------



CONTRACTOR'S OPTION TO FURNISH

- All equipment and connections above bradenhead or casinghead. Working pressure of preventers to be 2000 psi minimum.
- Automatic accumulator (80 gallon, minimum) capable of closing BOP in 30 seconds or less and, holding them closed against full rated working pressure.
- BOP controls, to be located near drillers' position.
- Kelly equipped with Kelly cock.
- Inside blowout preventer or its equivalent on derrick floor at all times with proper threads to fit pipe being used.
- Kelly saver-sub equipped with rubber casing protector at all times.
- Plug type blowout preventer tester.
- Extra set pipe rams to fit drill pipe in use on location at all times.
- Type RX ring gaskets in place of Type R.

MEC TO FURNISH

- Bradenhead or casing head and side valves.
- Wear bushing. If required.

GENERAL NOTES:

- Deviations from this drawing may be made only with the express permission of MEC's Drilling Manager.
- All connections, valves, fittings, piping, etc., subject to well or pump pressure must be flanged (suitable clamp connections acceptable) and have minimum working pressure equal to rated working pressure of preventers up through choke valves must be full opening and suitable for high pressure mud service.
- Controls to be of standard design and each marked, showing opening and closing position.
- Chokes will be positioned so as not to hamper or delay changing of choke beans. Replaceable parts for adjustable choke, or bean sizes, retainers, and choke wrenches to be conveniently located for immediate use.
- All valves to be equipped with hand-wheels or handles ready for immediate use.
- Choke lines must be suitably anchored.
- Handwheels and extensions to be connected and ready for use.
- Valves adjacent to drilling spool to be kept open. Use outside valves except for emergency.
- All seamless steel control piping (2000 psi working pressure) to have flexible joints to avoid stress. Hoses will be permitted.
- Casinghead connections shall not be used except in case of emergency.
- Do not use kill line for routine fill up operations.

Mack Energy Corporation

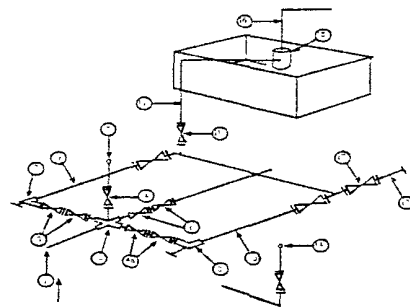
Exhibit #11

MINIMUM CHOKE MANIFOLD

3,000, 5,000, and 10,000 PSI Working Pressure

3M will be used

3 MWP - 5 MWP - 10 MWP



Mud Pit

Reserve Pit

* Location of separator optional

Below Substructure

Minimum requirements

No.		3,000 MWP			5,000 MWP			10,000 MWP		
		I.D.	NOMINAL	Rating	I.D.	Nominal	Rating	I.D.	Nominal	Rating
1	Line from drilling Spool		3"	3,000		3"	5,000		3"	10,000
2	Cross 3" x 3" x 3" x 2"			3,000			5,000			
2	Cross 3" x 3" x 3" x 2"									10,000
3	Valve Gate Plug	3 1/8		3,000	3 1/8		5,000	3 1/8		10,000
4	Valve Gate Plug	1 13/16		3,000	1 13/16		5,000	1 13/16		10,000
4a	Valves (1)	2 1/16		3,000	2 1/16		5,000	2 1/16		10,000
5	Pressure Gauge			3,000			5,000			10,000
6	Valve Gate Plug	3 1/8		3,000	3 1/8		5,000	3 1/8		10,000
7	Adjustable Choke (3)	2"		3,000	2"		5,000	2"		10,000
8	Adjustable Choke	1"		3,000	1"		5,000	2"		10,000
9	Line		3"	3,000		3"	5,000		3"	10,000
10	Line		2"	3,000		2"	5,000		2"	10,000
11	Valve Gate Plug	3 1/8		3,000	3 1/8		5,000	3 1/8		10,000
12	Line		3"	1,000		3"	1,000		3"	2,000
13	Line		3"	1,000		3"	1,000		3"	2,000
14	Remote reading compound Standpipe pressure gauge			3,000			5,000			10,000
15	Gas Separator		2' x 5'			2' x 5'			2' x 5'	
16	Line		4"	1,000		4"	1,000		4"	2,000
17	Valve Gate Plug	3 1/8		3,000	3 1/8		5,000	3 1/8		10,000

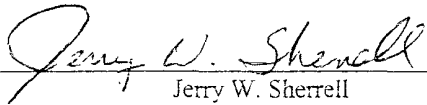
- (1) Only one required in Class 3M
- (2) Gate valves only shall be used for Class 10 M
- (3) Remote operated hydraulic choke required on 5,000 psi and 10,000 psi for drilling.

EQUIPMENT SPECIFICATIONS AND INSTALLATION INSTRUCTION

1. All connections in choke manifold shall be welded, studded, flanged or Cameron clamp of comparable rating.
2. All flanges shall be API 6B or 6BX and ring gaskets shall be API RX or BX. Use only BX for 10 MWP
3. All lines shall be securely anchored
4. Chokes shall be equipped with tungsten carbide seats and needles, and replacements shall be available
5. Choke manifold pressure and standpipe pressure gauges shall be available at the choke manifold to assist in regulating chokes
As an alternate with automatic chokes, a choke manifold pressure gauge shall be located on the rig floor in conjunction with the standpipe pressure gauge
6. Line from drilling spool to choke manifold should be as straight as possible. Lines downstream from chokes shall make turns by large bends or 90 degree bends using bull plugged tees.

CERTIFICATION

I hereby certify that I, or person under my direct supervision, have inspected the proposed drill site and access route; that I am familiar with the conditions which currently exist; that the statements made in this APD are to the best of my knowledge, true and correct; and the work associated with the operations proposed herein will be performed by Mack Energy Corporation and its contractors and subcontractors in conformity with this plan and the terms and conditions which it is approved. This statement is subject to the provisions of 18 U.S.C. 1001 for the filing of a false statement.

Date: 7-1-08 Signed: 
Jerry W. Sherrell

PECOS DISTRICT CONDITIONS OF APPROVAL

OPERATOR'S NAME:	Mack Energy Corporation
LEASE NO.:	NM118716
WELL NAME & NO.:	Eagle Nest Federal No. 1
SURFACE HOLE FOOTAGE:	355' FNL & 530' FWL
BOTTOM HOLE FOOTAGE:	355' FNL & 330' FEL
LOCATION:	Section 5, T. 16 S., R 30 E., NMPM
COUNTY:	Eddy County, New Mexico

TABLE OF CONTENTS

Standard Conditions of Approval (COA) apply to this APD. If any deviations to these standards exist or special COAs are required, the section with the deviation or requirement will be checked below.

- ☐ **General Provisions**
- ☐ **Permit Expiration**
- ☐ **Archaeology, Paleontology, and Historical Sites**
- ☐ **Noxious Weeds**
- ☒ **Special Requirements**

Lesser Prairie Chicken

- ☒ **Construction**
 - Notification
 - Topsoil
 - Closed Loop System
 - Federal Mineral Material Pits
 - Well Pads
 - Roads

- ☒ **Road Section Diagram**
- ☒ **Drilling**
- ☒ **Production (Post Drilling)**
 - Well Structures & Facilities
 - Pipelines

- ☒ **Interim Reclamation**
- ☐ **Final Abandonment/Reclamation**

I. GENERAL PROVISIONS

The approval of the Application For Permit To Drill (APD) is in compliance with all applicable laws and regulations: 43 Code of Federal Regulations 3160, the lease terms, Onshore Oil and Gas Orders, Notices To Lessees, New Mexico Oil Conservation Division (NMOCD) Rules, National Historical Preservation Act As Amended, and instructions and orders of the Authorized Officer. Any request for a variance shall be submitted to the Authorized Officer on Form 3160-5, Sundry Notices and Report on Wells.

II. PERMIT EXPIRATION

If the permit terminates prior to drilling and drilling cannot be commenced within 60 days after expiration, an operator is required to submit Form 3160-5, Sundry Notices and Reports on Wells, requesting surface reclamation requirements for any surface disturbance. However, if the operator will be able to initiate drilling within 60 days after the expiration of the permit, the operator must have set the conductor pipe in order to allow for an extension of 60 days beyond the expiration date of the APD. (Filing of a Sundry Notice is required for this 60 day extension.)

III. ARCHAEOLOGICAL, PALEONTOLOGY & HISTORICAL SITES

Any cultural and/or paleontological resource discovered by the operator or by any person working on the operator's behalf shall immediately report such findings to the Authorized Officer. The operator is fully accountable for the actions of their contractors and subcontractors. The operator shall suspend all operations in the immediate area of such discovery until written authorization to proceed is issued by the Authorized Officer. An evaluation of the discovery shall be made by the Authorized Officer to determine the appropriate actions that shall be required to prevent the loss of significant cultural or scientific values of the discovery. The operator shall be held responsible for the cost of the proper mitigation measures that the Authorized Officer assesses after consultation with the operator on the evaluation and decisions of the discovery. Any unauthorized collection or disturbance of cultural or paleontological resources may result in a shutdown order by the Authorized Officer.

IV. NOXIOUS WEEDS

The operator shall be held responsible if noxious weeds become established within the areas of operations. Weed control shall be required on the disturbed land where noxious weeds exist, which includes the roads, pads, associated pipeline corridor, and adjacent land affected by the establishment of weeds due to this action. The operator shall consult with the Authorized Officer for acceptable weed control methods, which include following EPA and BLM requirements and policies.

V. SPECIAL REQUIREMENT(S)

Mitigation Measures: The mitigation measures include the Pecos District Conditions of Approval, the standard stipulation for the lesser prairie chicken, the standard stipulation for surface pipelines, and the standard stipulations for permanent resource roads.

Timing Limitation Stipulation/Condition of Approval for Lesser Prairie-Chicken: Oil and gas activities including 3-D geophysical exploration, and drilling will not be allowed in lesser prairie-chicken habitat during the period from March 1st through June 15th annually. During that period, other activities that produce noise or involve human activity, such as the maintenance of oil and gas facilities, geophysical exploration other than 3-D operations, and pipeline, road, and well pad construction, will be allowed except between 3:00 am and 9:00 am. The 3:00 am to 9:00 am restriction will not apply to normal, around-the-clock operations, such as venting, flaring, or pumping, which do not require a human presence during this period. Additionally, no new drilling will be allowed within up to 200 meters of leks known at the time of permitting. Normal vehicle use on existing roads will not be restricted. Exhaust noise from pump jack engines must be muffled or otherwise controlled so as not to exceed 75 db measured at 30 ft. from the source of the noise.

Eagle Nest Federal # 1: Closed Loop V- Door Southeast

VI. CONSTRUCTION

A. NOTIFICATION

The BLM shall administer compliance and monitor construction of the access road and well pad. Notify the Carlsbad Field Office at (505) 234-5972 at least 3 working days prior to commencing construction of the access road and/or well pad.

When construction operations are being conducted on this well, the operator shall have the approved APD and Conditions of Approval (COA) on the well site and they shall be made available upon request by the Authorized Officer.

B. TOPSOIL

The operator shall stockpile the topsoil of the well pad. The topsoil to be stripped is approximately 8 inches in depth. The topsoil shall not be used to backfill the reserve pit and will be used for interim and final reclamation.

C. Closed Loop System

Eagle Nest Federal # 1: Closed Loop V- Door Southeast

Tanks are required for drilling operations: No Pits.

The operator shall properly dispose of drilling contents at an authorized disposal site.

D. FEDERAL MINERAL MATERIALS PIT

If the operator elects to surface the access road and/or well pad, mineral materials extracted during construction of the reserve pit may be used for surfacing the well pad and access road and other facilities on the lease.

Payment shall be made to the BLM prior to removal of any additional federal mineral materials from any site other than the reserve pit. Call the Carlsbad Field Office at (505) 234-5972.

E. WELL PAD SURFACING

Surfacing of the well pad is not required.

If the operator elects to surface the well pad, the surfacing material may be required to be removed at the time of reclamation.

The well pad shall be constructed in a manner which creates the smallest possible surface disturbance, consistent with safety and operational needs.

F. ON LEASE ACCESS ROADS

Road Width

The access road shall have a driving surface that creates the smallest possible surface disturbance and does not exceed fourteen (14) feet in width. The maximum width of surface disturbance, when constructing the access road, shall not exceed thirty (30) feet.

Surfacing

Surfacing material is not required on the new access road driving surface. If the operator elects to surface the new access road or pad, the surfacing material may be required to be removed at the time of reclamation.

Where possible, no improvements should be made on the unsurfaced access road other than to remove vegetation as necessary, road irregularities, safety issues, or to fill low areas that may sustain standing water.

The Authorized Officer reserves the right to require surfacing of any portion of the access road at any time deemed necessary. Surfacing may be required in the event the road deteriorates, erodes, road traffic increases, or it is determined to be beneficial for future field development. The surfacing depth and type of material will be determined at the time of notification.

Crowning

Crowning shall be done on the access road driving surface. The road crown shall have a grade of approximately 2% (i.e., a 1" crown on a 14' wide road). The road shall conform to Figure 1; cross section and plans for typical road construction.

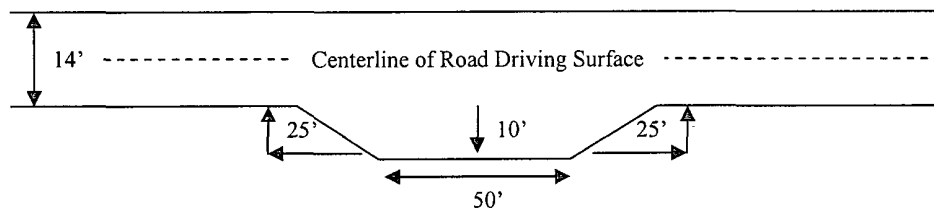
Ditching

Ditching shall be required on both sides of the road.

Turnouts

Vehicle turnouts shall be constructed on the road. Turnouts shall be intervisible with interval spacing distance less than 1000 feet. Turnouts shall be constructed on all blind curves. Turnouts shall conform to the following diagram:

Standard Turnout – Plan View

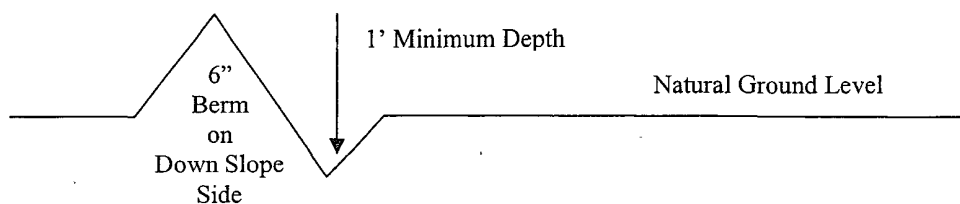


Drainage

Drainage control systems shall be constructed on the entire length of road (e.g. ditches, sidehill outsloping and insloping, lead-off ditches, culvert installation, and low water crossings).

A typical lead-off ditch has a minimum depth of 1 foot below and a berm of 6 inches above natural ground level. The berm shall be on the down-slope side of the lead-off ditch.

Cross Section of a Typical Lead-off Ditch



All lead-off ditches shall be graded to drain water with a 1 percent minimum to 3 percent maximum ditch slope. The spacing interval are variable for lead-off ditches and shall be determined according to the formula for spacing intervals of lead-off ditches, but may be amended depending upon existing soil types and centerline road slope (in %);

Formula for Spacing Interval of Lead-off Ditches

Example - On a 4% road slope that is 400 feet long, the water flow shall drain water into a lead-off ditch. Spacing interval shall be determined by the following formula:

$$400 \text{ foot road with } 4\% \text{ road slope: } \frac{400'}{4\%} + 100' = 200' \text{ lead-off ditch interval}$$

Culvert Installations

Appropriately sized culvert(s) shall be installed at the deep waterway channel flow crossing.

Cattleguards

An appropriately sized cattleguard(s) sufficient to carry out the project shall be installed and maintained at fence crossing(s).

Any existing cattleguard(s) on the access road shall be repaired or replaced if they are damaged or have deteriorated beyond practical use. The operator shall be responsible for the condition of the existing cattleguard(s) that are in place and are utilized during lease operations.

A gate shall be constructed and fastened securely to H-braces.

Fence Requirement

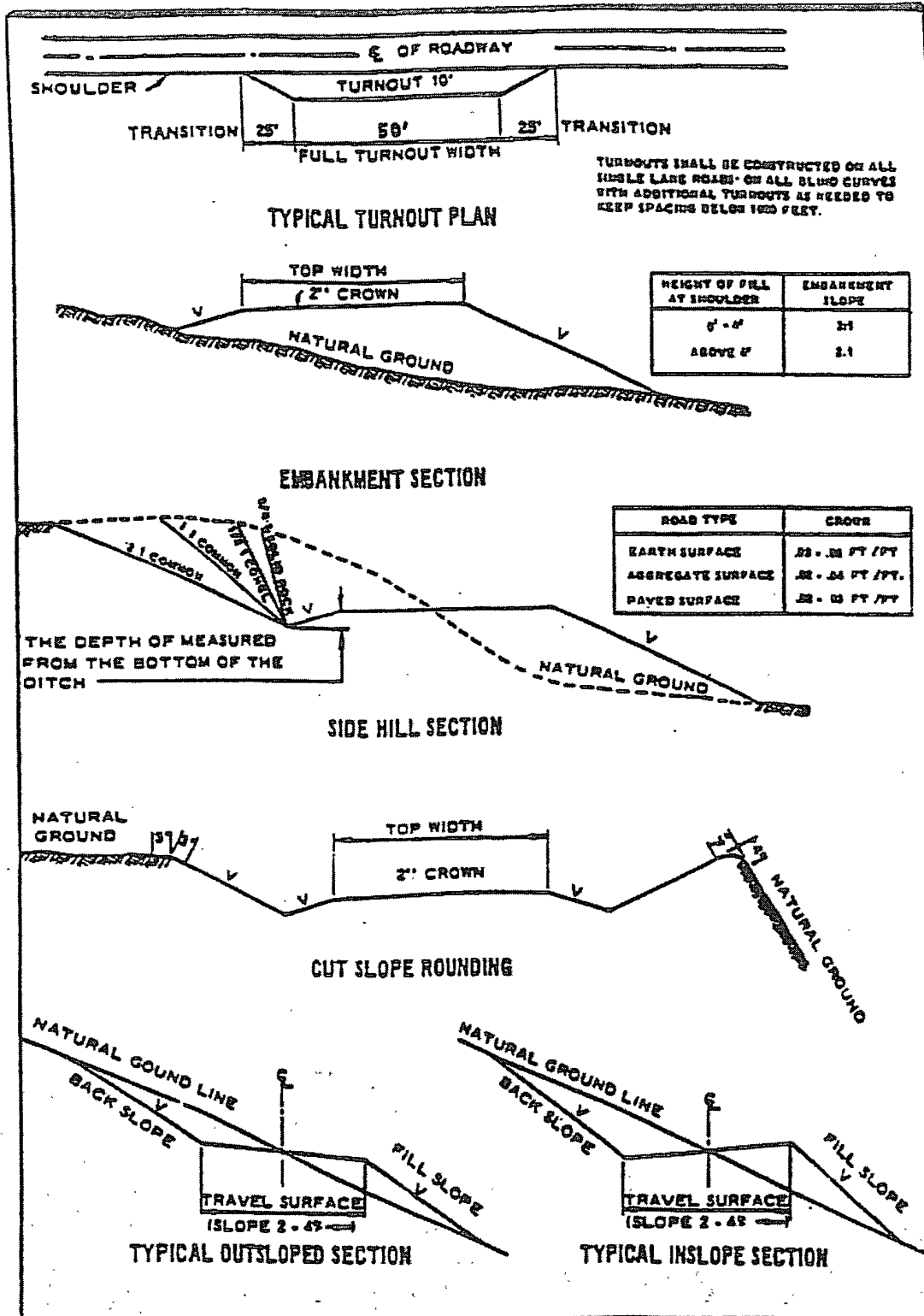
Where entry is required across a fence line, the fence shall be braced and tied off on both sides of the passageway prior to cutting.

The operator shall notify the private surface landowner or the grazing allotment holder prior to crossing any fence(s).

Public Access

Public access on this road shall not be restricted by the operator without specific written approval granted by the Authorized Officer.

Figure 1 – Cross Sections and Plans For Typical Road Sections



VII. DRILLING

A. DRILLING OPERATIONS REQUIREMENTS

The BLM is to be notified a minimum of 4 hours in advance for a representative to witness:

- a. Spudding well
- b. Setting and/or Cementing of all casing strings
- c. BOPE tests

☒ **Eddy County**

Call the Carlsbad Field Office, 620 East Greene St., Carlsbad, NM 88220,
(575) 361-2822

1. **Although Hydrogen Sulfide has not been reported in this section, it is always a possible hazard. It has been reported in the Township to the east. If Hydrogen Sulfide is encountered, please report measured amounts and formations to the BLM.**
2. Unless the production casing has been run and cemented or the well has been properly plugged, the drilling rig shall not be removed from over the hole without prior approval.

B. CASING – CASING TO BE API GRADE

Changes to the approved APD casing and cement program require submitting a sundry and receiving approval prior to work. Failure to obtain approval prior to work will result in an Incident of Non-Compliance being issued.

Centralizers required on surface casing per Onshore Order 2.III.B.1.f.

Provide compressive strengths including hours to reach required 500 pounds compressive strength prior to cementing each casing string.

No pea gravel permitted for remedial or fall back remedial without prior authorization from the BLM engineer.

**Possible lost circulation in the Grayburg and San Andres formations.
Possible brine and water flows in the Salado and Artesia Groups.**

1. **The 13-3/8 inch surface casing shall be set at approximately 475 feet (a minimum of 25 feet into the Rustler Anhydrite and above the salt) and cemented to the surface. Fresh water mud to be used to setting depth. Additional cement may be required since with the additional length, the excess cement is less than 10%.**

- a. If cement does not circulate to the surface, the appropriate BLM office shall be notified and a temperature survey utilizing an electronic type temperature survey with a surface log readout will be used or a cement bond log shall be run to verify the top of the cement.
 - b. Wait on cement (WOC) time for a primary cement job will be a minimum 18 hours for a water basin, 24 hours in the potash area, or 500 pounds compressive strength, whichever is greater. (This is to include the lead cement).
 - c. Wait on cement (WOC) time for a remedial job will be a minimum of 4 hours after bringing cement to surface or 500 pounds compressive strength, whichever is greater.
 - d. If cement falls back, remedial cementing will be done prior to drilling out that string.
2. The minimum required fill of cement behind the 9-5/8 inch intermediate casing is:
- ☒ Cement to surface. If cement does not circulate see B.1.a-d above.
3. The minimum required fill of cement behind the 7 inch second intermediate casing is:
- ☒ Cement to surface. If cement does not circulate see B.1.a-d above. **Additional cement may be required – excess cement calculates to less than 10%.**
4. The minimum required fill of cement behind the 4-1/2 inch production liner is:
- ☒ No cement required – will use isolation packers. **Liner top to be a minimum of 200' inside 7" intermediate casing.**

**Seal on liner is to be tested per Onshore Oil and Gas Order 2.III.B.1.b.
Please call BLM for witness of seal test.**

5. If hardband drill pipe is rotated inside casing, returns will be monitored for metal: If metal is found in samples, drill pipe will be pulled and rubber protectors which have a larger diameter than the tool joints of the drill pipe will be installed prior to continuing drilling operations.

C. PRESSURE CONTROL

1. All blowout preventer (BOP) and related equipment (BOPE) shall comply with well control requirements as described in Onshore Oil and Gas Order No. 2 and API RP 53 Sec. 17.

2. Minimum working pressure of the blowout preventer (BOP) and related equipment (BOPE) required for drilling below the surface casing shoe shall be **2000 (2M)** psi.
3. Minimum working pressure of the blowout preventer (BOP) and related equipment (BOPE) required for drilling below the **9-5/8** intermediate casing shoe shall be **3000 (3M)** psi.
4. The appropriate BLM office shall be notified a minimum of 4 hours in advance for a representative to witness the tests.
 - a. The tests shall be done by an independent service company.
 - b. The results of the test shall be reported to the appropriate BLM office.
 - c. All tests are required to be recorded on a calibrated test chart. A copy of the BOP/BOPE test chart and a copy of independent service company test will be submitted to the appropriate BLM office.
 - d. The BOP/BOPE test shall include a low pressure test from 250 to 300 psi. The test will be held for a minimum of 10 minutes if test is done with a test plug and 30 minutes without a test plug.
 - e. A variance to test the surface casing and BOP/BOPE (**entire system**) to the reduced pressure of **1000** psi with the rig pumps is approved.

D. DRILL STEM TEST

If drill stem tests are performed, Onshore Order 2.III.D shall be followed.

WWI 072908

VIII. PRODUCTION (POST DRILLING)

A. WELL STRUCTURES & FACILITIES

Placement of Production Facilities

Production facilities should be placed on the well pad to allow for maximum interim recontouring and revegetation of the well location.

Containment Structures

The containment structure shall be constructed to hold the capacity of the entire contents of the largest tank, plus 24 hour production, unless more stringent protective requirements are deemed necessary by the Authorized Officer.

Painting Requirement

All above-ground structures including meter housing that are not subject to safety requirements shall be painted a flat non-reflective paint color Shale Green, Munsell Soil Color Chart # 5Y 4/2

B. PIPELINES

STANDARD STIPULATIONS FOR SURFACE INSTALLED PIPELINES

A copy of the APD and attachments, including stipulations, survey plat and/or map, will be on location during construction. BLM personnel may request to you a copy of your permit during construction to ensure compliance with all stipulations.

Holder agrees to comply with the following stipulations to the satisfaction of the Authorized Officer:

1. The holder shall indemnify the United States against any liability for damage to life or property arising from the occupancy or use of public lands under this grant.
2. The holder shall comply with all applicable Federal laws and regulations existing or hereafter enacted or promulgated. In any event, the holder shall comply with the Toxic Substances Control Act of 1976 as amended, 15 USC 2601 et seq. (1982) with regards to any toxic substances that are used, generated by or stored on the right-of-way or on facilities authorized under this right-of-way grant. (See 40 CFR, Part 702-799 and especially, provisions on polychlorinated biphenyls, 40 CFR 761.1-761.193.) Additionally, any release of toxic substances (leaks, spills, etc.) in excess of the reportable quantity established by 40 CFR, Part 117 shall be reported as required by the Comprehensive Environmental Response, Compensation, and Liability Act, section 102b. A copy of any report required or requested by any Federal agency or State government as a result of a reportable release or spill of any toxic substances shall be furnished to the authorized officer concurrent with the filing of the reports to the involved Federal agency or State government.

3. The holder agrees to indemnify the United States against any liability arising from the release of any hazardous substance or hazardous waste (as these terms are defined in the Comprehensive Environmental Response, Compensation and Liability Act of 1980, 42 U.S.C. 9601, et seq. or the Resource Conservation and Recovery Act, 42 U.S.C. 6901, et seq.) on the Right-of-Way (unless the release or threatened release is wholly unrelated to activity of the Right-of-Way holder's activity on the Right-of-Way), or resulting from the activity of the Right-of-Way holder on the Right-of-Way. This agreement applies without regard to whether a release is caused by the holder, its agent, or unrelated third parties.

4. The holder shall be liable for damage or injury to the United States to the extent provided by 43 CFR Sec. 2883.1-4. The holder shall be held to a standard of strict liability for damage or injury to the United States resulting from pipe rupture, fire, or spills caused or substantially aggravated by any of the following within the right-of-way or permit area:

- a. Activities of the holder including, but not limited to construction, operation, maintenance, and termination of the facility.
- b. Activities of other parties including, but not limited to:
 - (1) Land clearing.
 - (2) Earth-disturbing and earth-moving work.
 - (3) Blasting.
 - (4) Vandalism and sabotage.
- c. Acts of God.

The maximum limitation for such strict liability damages shall not exceed one million dollars (\$1,000,000) for any one event, and any liability in excess of such amount shall be determined by the ordinary rules of negligence of the jurisdiction in which the damage or injury occurred.

This section shall not impose strict liability for damage or injury resulting primarily from an act of war or from the negligent acts or omissions of the United States.

- 5. If, during any phase of the construction, operation, maintenance, or termination of the pipeline, any oil, salt water, or other pollutant should be discharged from the pipeline system, impacting Federal lands, the control and total removal, disposal, and cleaning up of such oil, salt water, or other pollutant, wherever found, shall be the responsibility of the holder, regardless of fault. Upon failure of the holder to control, dispose of, or clean up such discharge on or affecting Federal lands, or to repair all damages resulting therefrom, on the Federal lands, the Authorized Officer may take such measures as he deems necessary to control and clean up the discharge and restore the area, including, where appropriate, the aquatic environment and

fish and wildlife habitats, at the full expense of the holder.
Such action by the Authorized Officer shall not relieve the holder of any responsibility as provided herein.

6. All construction and maintenance activity will be confined to the authorized right-of-way width of 25 feet.
7. No blading or clearing of any vegetation will be allowed unless approved in writing by the Authorized Officer.
8. The holder shall install the pipeline on the surface in such a manner that will minimize suspension of the pipeline across low areas in the terrain. In hummocky or dune areas, the pipeline will be "snaked" around hummocks and dunes rather than suspended across these features.
9. The pipeline shall be buried with a minimum of 24 inches under all roads, "two-tracks," and trails. Burial of the pipe will continue for 20 feet on each side of each crossing. The condition of the road, upon completion of construction, shall be returned to at least its former state with no bumps or dips remaining in the road surface.
10. The holder shall minimize disturbance to existing fences and other improvements on public lands. The holder is required to promptly repair improvements to at least their former state. Functional use of these improvements will be maintained at all times. The holder will contact the owner of any improvements prior to disturbing them. When necessary to pass through a fence line, the fence shall be braced on both sides of the passageway prior to cutting of the fence. No permanent gates will be allowed unless approved by the Authorized Officer.
11. In those areas where erosion control structures are required to stabilize soil conditions, the holder will install such structures as are suitable for the specific soil conditions being encountered and which are in accordance with sound resource management practices.
12. Excluding the pipe, all above-ground structures not subject to safety requirement shall be painted by the holder to blend with the natural color of the landscape. The paint used shall be a color which simulates "Standard Environmental Colors" – **Shale Green**, Munsell Soil Color No. 5Y 4/2; designated by the Rocky Mountain Five State Interagency Committee.
13. The pipeline will be identified by signs at the point of origin and completion of the right-of-way and at all road crossings. At a minimum, signs will state the holder's name, BLM serial number, and the product being transported. Signs will be maintained in a legible condition for the life of the pipeline.
14. The holder shall not use the pipeline route as a road for purposes other than routine maintenance as determined necessary by the Authorized Officer in consultation with the

holder. The holder will take whatever steps are necessary to ensure that the pipeline route is not used as a roadway.

15. Any cultural and/or paleontological resource (historic or prehistoric site or object) discovered by the holder, or any person working on his behalf, on public or Federal land shall be immediately reported to the authorized officer. Holder shall suspend all operations in the immediate area of such discovery until written authorization to proceed is issued by the authorized officer. An evaluation of the discovery will be made by the authorized officer to determine appropriate cultural or scientific values. The holder will be responsible for the cost of evaluation and any decision as to proper mitigation measures will be made by the authorized officer after consulting with the holder.

(March 1989)

IX. INTERIM RECLAMATION & RESERVE PIT CLOSURE

A. INTERIM RECLAMATION

If the well is a producer, interim reclamation shall be conducted on the well site in accordance with the orders of the Authorized Officer. The operator shall submit a Sundry Notices and Reports on Wells (Notice of Intent), Form 3160-5, prior to conducting interim reclamation.

During the life of the development, all disturbed areas not needed for active support of production operations should undergo interim reclamation in order to minimize the environmental impacts of development on other resources and uses.

The operators should work with BLM surface management specialists to devise the best strategies to reduce the size of the location. Any reductions should allow for remedial well operations, as well as safe and efficient removal of oil and gas.

During reclamation, the removal of caliche is important to increasing the success of revegetating the site. Removed caliche may be used for road repairs, fire walls or for building other roads and locations. In order to operate the well or complete workover operations, it may be necessary to drive, park and operate on restored interim vegetation within the previously disturbed area. Disturbing revegetated areas for production or workover operations will be allowed. If there is significant disturbance and loss of vegetation, the area will need to be revegetated. Communicate with the appropriate BLM office for any exceptions/exemptions if needed.

Seed Mixture 2, for Sandy Sites

The holder shall seed all disturbed areas with the seed mixture listed below. The seed mixture shall be planted in the amounts specified in pounds of pure live seed (PLS)* per acre. There shall be no primary or secondary noxious weeds in the seed mixture. Seed will be tested and the viability testing of seed will be done in accordance with State law (s) and within nine (9) months prior to purchase. Commercial seed will be either certified or registered seed. The seed container will be tagged in accordance with State law(s) and available for inspection by the authorized officer.

Seed will be planted using a drill equipped with a depth regulator to ensure proper depth of planting where drilling is possible. The seed mixture will be evenly and uniformly planted over the disturbed area (smaller/heavier seeds have a tendency to drop the bottom of the drill and are planted first). The holder shall take appropriate measures to ensure this does not occur. Where drilling is not possible, seed will be broadcast and the area shall be raked or chained to cover the seed. When broadcasting the seed, the pounds per acre are to be doubled. The seeding will be repeated until a satisfactory stand is established as determined by the authorized officer. Evaluation of growth will not be made before completion of at least one full growing season after seeding.

Species to be planted in pounds of pure live seed* per acre:

<u>Species</u>	<u>lb/acre</u>
Sand dropseed (<i>Sporobolus cryptandrus</i>)	1.0
Sand love grass (<i>Eragrostis trichodes</i>)	1.0
Plains bristlegrass (<i>Setaria macrostachya</i>)	2.0

*Pounds of pure live seed:

Pounds of seed x percent purity x percent germination = pounds pure live seed

X. FINAL ABANDONMENT & REHABILITATION REQUIREMENTS

Upon abandonment of the well and/or when the access road is no longer in service the Authorized Officer shall issue instructions and/or orders for surface reclamation and restoration of all disturbed areas.

On private surface/federal mineral estate land the reclamation procedures on the road and well pad shall be accomplished in accordance with the private surface land owner agreement.