

OCT 06 2008

OCD-ARTESIA

Form C-102

Issued October 12, 2005

DISTRICT I
1626 N. French Dr., Hobbs, NM 88240DISTRICT II
1301 W. Grand Avenue, Artesia, NM 88210DISTRICT III
1000 Rio Brazos Rd., Aztec, NM 87410DISTRICT IV
1220 S. St. Francis Dr., Santa Fe, NM 87505State of New Mexico
Energy, Minerals and Natural Resources Department

Submit to Appropriate District Office

State Lease - 4 Copies

Fee Lease - 3 Copies

OIL CONSERVATION DIVISION

1220 South St. Francis Dr.
Santa Fe, New Mexico 87505

X AMENDED REPORT

WELL LOCATION AND ACREAGE DEDICATION PLAT

API Number <i>30-015-36685</i>	Pool Code <i>8090</i>	Pool Name <i>Brushy Draw; Delaware, East</i>
Property Code <i>36900</i>	Property Name RDX "16"	Well Number 5
OGRID No. <i>246289</i>	Operator Name RKI EXPLORATION & PRODUCTION	Elevation 3076'

Surface Location

UL or lot No.	Section	Township	Range	Lot Idn	Feet from the	North/South line	Feet from the	East/West line	County
J	16	26 S	30 E		2310	SOUTH	2310	EAST	EDDY

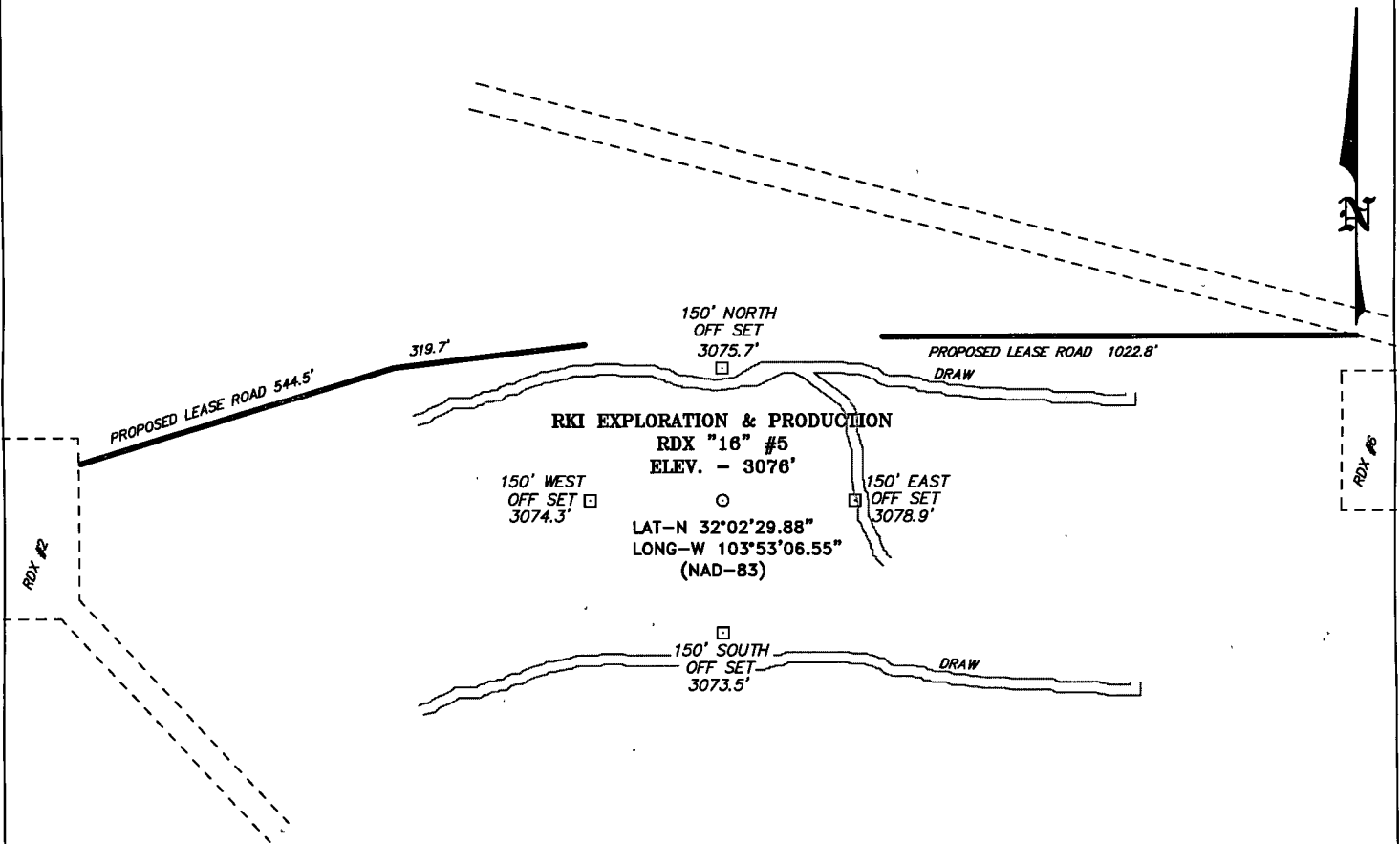
Bottom Hole Location If Different From Surface

UL or lot No.	Section	Township	Range	Lot Idn	Feet from the	North/South line	Feet from the	East/West line	County
Dedicated Acres		Joint or Infill		Consolidation Code		Order No.			

NO ALLOWABLE WILL BE ASSIGNED TO THIS COMPLETION UNTIL ALL INTERESTS HAVE BEEN CONSOLIDATED
OR A NON-STANDARD UNIT HAS BEEN APPROVED BY THE DIVISION

<div style="text-align: center;"> <p>SURFACE LOCATION</p> <p>LAT N.: 32°02'29.88"</p> <p>LONG W.: 103°53'06.55"</p> <p>SPC N.: 379169.906</p> <p>E.: 680206.270</p> <p>(NAD-83)</p> </div>				<p>2310'</p>	
				<p>2310'</p>	
<p>OPERATOR CERTIFICATION</p> <p>I hereby certify that the information contained herein is true and complete to the best of my knowledge and belief, and that this organization either owns a working interest or unleased mineral interest in the land including the proposed bottom hole location pursuant to a contract with an owner of such a mineral or working interest, or to a voluntary pooling agreement or a compulsory pooling order heretofore entered by the division.</p> <p><i>Bill Aubrey</i> 10-1-08 Signature Date</p> <p><i>Bill Aubrey</i> Printed Name</p>				<p>SURVEYOR CERTIFICATION</p> <p>I hereby certify that the well location shown on this plat was plotted from field notes of actual surveys made by me or under my supervision, and that the same is true and correct to the best of my belief.</p> <p>JULY 25 2008</p> <p>Date Surveyed</p> <p><i>Gary L. Jones</i> Signature & Seal Professional Surveyor</p> <p>W. State of N.M. 1981</p> <p>Certificate No. Gary L. Jones 7977</p> <p>BASIN SURVEYS</p>	

SECTION 16, TOWNSHIP 26 SOUTH, RANGE 30 EAST, N.M.P.M.,
EDDY COUNTY, NEW MEXICO.



DIRECTIONS TO LOCATION:

FROM THE JUNCTION OF HWY 285 AND LONGHORN,
GO EAST 3.9 MILES TO SECOND ROAD ON RIGHT
PAST A LOW WATER CROSSING, GO EAST 5.9 MILES
TO LEAS ROAD, ON LEASE ROAD GO SOUTH 1.2
MILES TO 2-TRACK, GO EAST TO PROPOSED LEASE
ROAD.

BASIN SURVEYS P.O. BOX 1786-HOBBS, NEW MEXICO

W.O. Number: 19981 Drawn By: J. M. SMALL

Date: 07-28-2008 Disk: JMS 19981

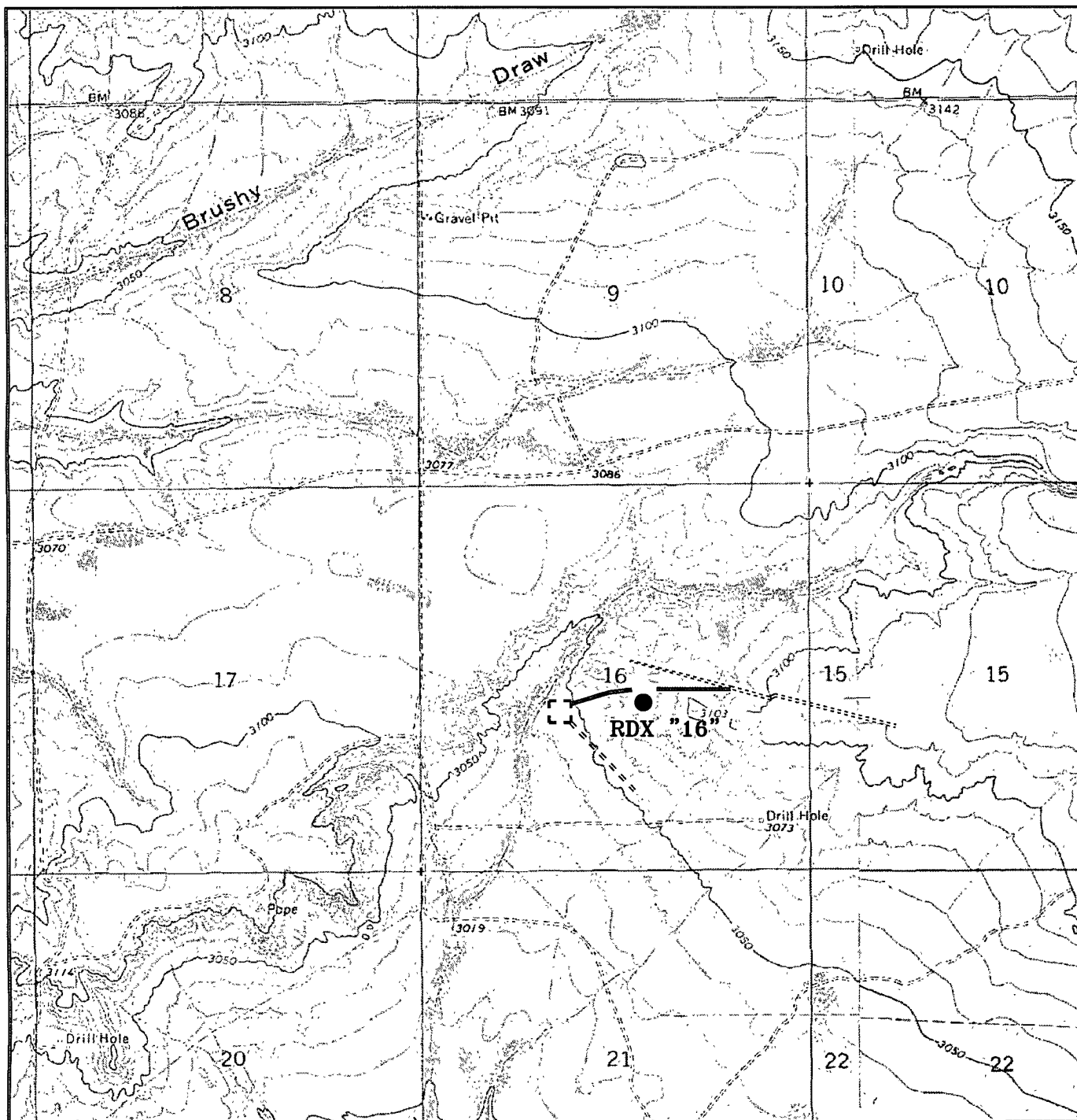
200 0 200 400 FEET
SCALE: 1" = 200'

RKI EXPLORATION & PRODUCTION

REF: RDX "16" #5 / Well Pad Topo

THE RDX "16" #5 LOCATED 2310' FROM
THE SOUTH LINE AND 2310' FROM THE EAST LINE OF
SECTION 16, TOWNSHIP 26 SOUTH, RANGE 30 EAST,
N.M.P.M., EDDY COUNTY, NEW MEXICO.

Survey Date: 07-25-2008 Sheet 1 of 1 Sheets



RDX "16" #5

Located at 2310' FSL AND 2310' FEL
Section 16, Township 26 South, Range 30 East,
N.M.P.M., Eddy County, New Mexico.



focused on excellence
in the oilfield

P.O. Box 1786
1120 N. West County Rd.
Hobbs, New Mexico 88241
(505) 393-7316 - Office
(505) 392-3074 - Fax
basinsurveys.com

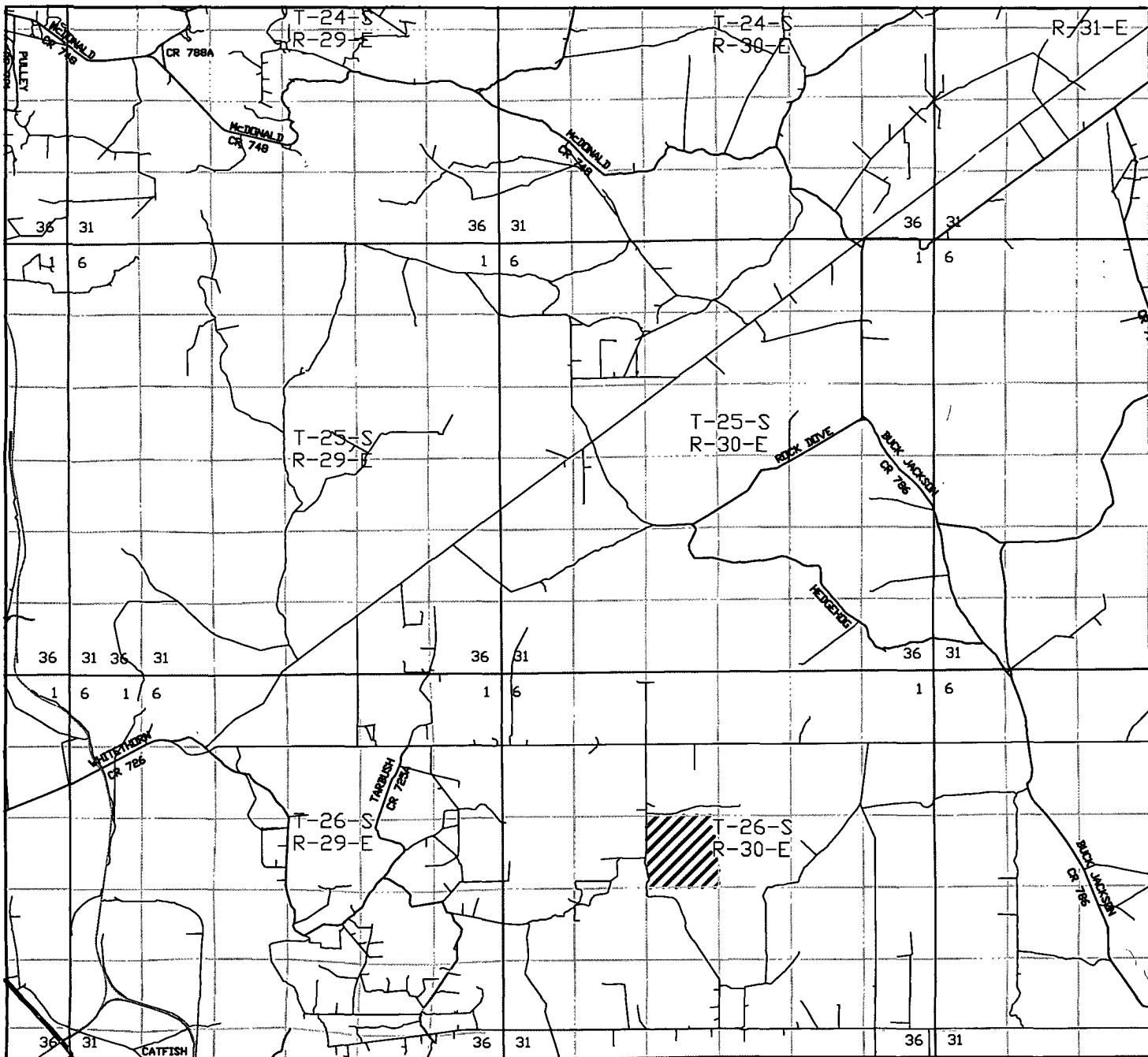
W.O. Number: 19981

Survey Date: 07-25-2008

Scale: 1" = 2000'

Date: 07-28-2008

RKI
**EXPLORATION &
PRODUCTION**



RDX "16" #5

Located at 2310' FSL and 2310' FEL
Section 16, Township 26 South, Range 30 East,
N.M.P.M., Eddy County, New Mexico.

basin
surveys
focused on excellence
in the oilfield

P.O. Box 1786
1120 N. West County Rd.
Hobbs, New Mexico 88241
(505) 393-7316 - Office
(505) 392-3074 - Fax
basinsurveys.com

W.O. Number: JMS 19981

Survey Date: 07-25-2008

Scale: 1" = 2 MILES

Date: 07-28-2008

RKI
**EXPLORATION &
PRODUCTION**