

Submit 3 Copies To Appropriate District
Office
District I
1625 N. French Dr., Hobbs, NM 87240
District II
1301 W. Grand Ave., Artesia, NM 88210
District III
1000 Rio Brazos Rd., Aztec, NM 87410
District IV
1220 S. St. Francis Dr., Santa Fe, NM 87505

State of New Mexico
Energy, Minerals and Natural Resources

Form C-103
May 27, 2004

OIL CONSERVATION DIVISION
1220 South St. Francis Dr.
Santa Fe, NM 87505



WELL API NO. 30-015-00722
5. Indicate Type of Lease STATE <input checked="" type="checkbox"/> FEE <input type="checkbox"/>
6. State Oil & Gas Lease No.
7. Lease Name or Unit Agreement Name: Empire Abo Unit 'L'
8. Well Number 16
9. OGRID Number 00778
10. Pool name or Wildcat Empire Abo

SUNDRY NOTICES AND REPORTS ON WELLS
(DO NOT USE THIS FORM FOR PROPOSALS TO DRILL OR TO DEEPEN OR PLUG BACK TO A DIFFERENT RESERVOIR. USE "APPLICATION FOR PERMIT" (FORM C-101) FOR SUCH PROPOSALS.)

1. Type of Well: Oil Well <input checked="" type="checkbox"/> Gas Well <input type="checkbox"/> Other	NOV 20 2008
2. Name of Operator BP America Production Company	OCD ARTESIA
3. Address of Operator P.O. Box 1089 Eunice NM 88231	
4. Well Location Unit Letter P : 660 feet from the S line and 660 feet from the E line Section 2 Township 18S Range 27E NMPM County Eddy	
11. Elevation (Show whether DR, RKB, RT, GR, etc) 3584' RKB	
Pit or Below-grade Tank Application <input type="checkbox"/> or Closure <input type="checkbox"/> Pit type _____ Depth to Groundwater _____ Distance from nearest fresh water well _____ Distance from nearest surface water _____ Pit Liner Thickness: _____ mil Below-Grade Tank: Volume _____ bbls; Construction Material _____	

12. Check Appropriate Box to Indicate Nature of Notice, Report, or Other Data

NOTICE OF INTENTION TO:

PERFORM REMEDIAL WORK ☐ PLUG AND ABANDON ☒
TEMPORARILY ABANDON ☐ CHANGE PLANS ☐
PULL OR ALTER CASING ☐ MULTIPLE COMPLETION ☐
OTHER: ☐

SUBSEQUENT REPORT OF:

REMEDIAL WORK ☐ ALTERING CASING ☐
COMMENCE DRILLING OPNS. ☐ PLUG AND ABANDONMENT ☐
CASING TEST AND CEMENT JOB ☐
OTHER: ☐

**Notify OCD 24 hrs. prior
To any work done.**

13. Describe proposed or completed operations. (Clearly state all pertinent details, and give pertinent dates, including estimated date of starting any proposed work). SEE RULE 1103. For Multiple Completions: Attach wellbore diagram of proposed completion or recompletion.

1. MIRU PU. Check tubing, casing and surface pipe for pressure - bleed off into containment. Monitor well and assure it's stable. ND WH and install BOP. Test BOP and casing to 500 psi.
 2. Release packer. POOH with tubing and packer.
 3. GIH w/ bit and scraper to 5980'. POOH.
 4. RU wireline unit. Set CIBP @ 5940'. (Abo top at 5958'). Correlate with log provided by Production Engineering. RD WL.
- Continued on page 2.

Approval Granted providing work
is complete by 2/21/05

I hereby certify that the information above is true and complete to the best of my knowledge and belief. I further certify that any pit or below-grade tank has been/will be constructed or closed according to NMOCD guidelines ☐ , a general permit ☐ or an (attached) alternative OCD-approved plan ☐

SIGNATURE Barry C. Price TITLE Area Operations Team Lead DATE 11/18/08
E-mail address: barry.price@bp.com
Type or print name Barry C. Price Telephone No. 575-394-1648

For State Use Only

APPROVED BY Phil Hanker TITLE CO DATE 11/21/08
Conditions of Approval, if any:

Form C-103
Empire Abo Unit L-16
30-015-00722
Continued from Page 1

5. TIH with perforated nipple and bull plug on 2 3/8" work string. Tag CIBP at 5940'. Load hole with mud-laden fluid (9.5 ppg, 40 sec/qt Funnel viscosity). Spot 280' cement plug on top of CIBP using 30 sx Class C neat.
6. PU to 3360'. Spot 280' cement plug at top of Glorieta (Glorieta top at 3355') using 30 sx Class C neat.
7. POOH.
8. RU wireline unit. Perforate casing at 1100' 2 SPF. Establish circulation down 5 1/2" casing and out 8 5/8" casing.
9. Set cement retainer at 800'. RD wireline.
10. GIH w/ 2 3/8" tubing. Sting into retainer. Establish circulation down 2 3/8" and out 8 5/8" casing.
11. RU cementer. Pump 200 sx cement to retainer and circulate to surface out 8 5/8" casing. (Estimated – may want to increase cement volume.) Will serve as plug at top of Queen (Queen top at 1022') and across surface casing shoe.
12. PU to 210'. Spot 210' cement plug using 25 sx to surface. This will serve as surface plug and Yates plug (Yates top at 195'). POOH.
13. RD PU and clean location. Cut off anchors.
14. Dig out WH and cut off casing heads to 3' below GL.
15. Install regulation dry hole marker. Clean location and prepare location for NMOCD inspection.

Empire Abo Unit L-16
Empire Abo Field

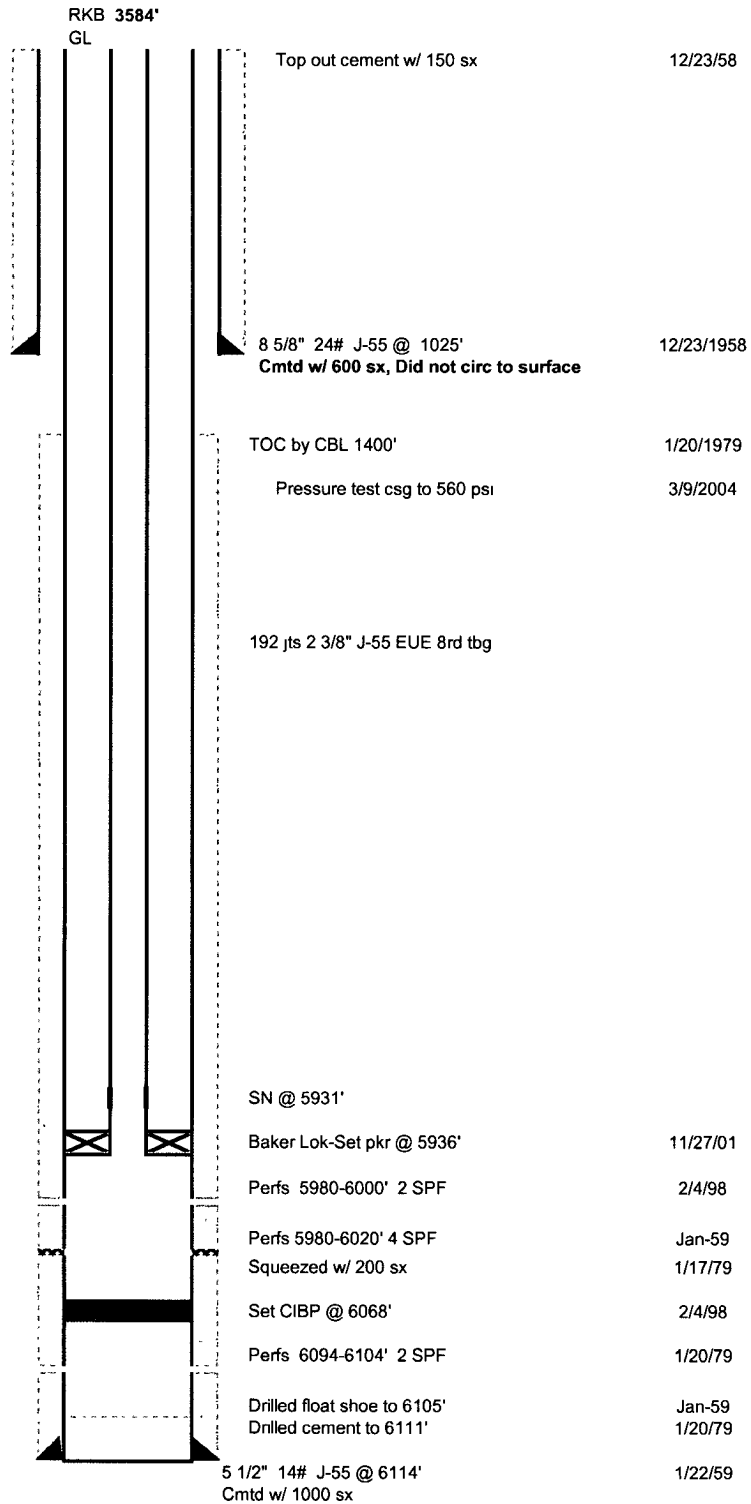
API No. 30-015-00722

660' FSL & 660' FEL
Sec 2- T18S - R27E
Eddy County, New Mexico

**Event
Date**

Spud 12/21/58
Completed Jan-59

Status 11-6-2008



Empire Abo Unit L-16
Empire Abo Field

API No. 30-015-00722

660' FSL & 660' FEL
Sec 2- T18S - R27E
Eddy County, New Mexico

Event
Date

Spud 12/21/58
Completed Jan-59

Proposed P & A

Yates & Surface Plug
0-210'
25 sx CI C cement

Queen & Surface Casing Shoe Plug
800-1100'
200 sx CI C cement

*TAC
if no circ
no surfar.*

Glometa Plug
3080-3360'
30 sx CI C cement

Abo Plug
5660-5940'
30 sx CI C cement
on top of CIBP @ 5940'

