

DEC 12 2008

District I

1625 N French Dr, Hobbs, NM 88240

District II

1301 W. Grand Avenue, Artesia, NM 88210

District III

1000 Rio Brazos Road, Aztec, NM 87410

District IV

1220 S. St Francis Dr, Santa Fe, NM 87505

State of New Mexico
Energy Minerals and Natural Resources

OCD-ARTESIA

Form C-101

June 16, 2008

Oil Conservation Division
1220 South St. Francis Dr.
Santa Fe, NM 87505

Submit to appropriate District Office

☐ AMENDED REPORT

APPLICATION FOR PERMIT TO DRILL, RE-ENTER, DEEPEN, PLUGBACK, OR ADD A ZONE

| | | |
|--|--|---------------------------|
| Operator Name and Address Rubicon Oil & Gas, LLC 508 W. Wall St., Suite 500, Midland, TX 79701 | | OGRID Number 194266 |
| Property Code | | API Number 30-15-36257 |
| Property Name Lakewood 33 | | Well No 2 |
| Proposed Pool 1 Lakewood, Morrow (gas) | | Proposed Pool 2 |

7 Surface Location

| UL or lot no | Section | Township | Range | Lot 1dn | Feet from the | North/South line | Feet from the | East/West line | County |
|--------------|---------|----------|-------|---------|---------------|------------------|---------------|----------------|--------|
| P | 28 | 19S | 26E | | 190' | South | 1050' | East | Eddy |

8 Proposed Bottom Hole Location If Different From Surface

| UL or lot no | Section | Township | Range | Lot 1dn | Feet from the | North/South line | Feet from the | East/West line | County |
|--------------|---------|----------|-------|---------|---------------|------------------|---------------|----------------|--------|
| B | 33 | 19S | 26E | | 660 | North | 1980 | East | Eddy |

Additional Well Information

| Work Type Code | Well Type Code | Cable/Rotary | Lease Type Code | Ground Level Elevation |
|----------------|----------------|--------------|-----------------|------------------------|
| New Well | Gas | Rotary | Private/Fee | 3296' |
| Multiple | Proposed Depth | Formation | Contractor | Spud Date |
| No | 9950' | Morrow | TBD | 01/2009 |

21 Proposed Casing and Cement Program

| Hole Size | Casing Size | Casing weight/foot | Setting Depth | Sacks of Cement | Estimated TOC |
|-----------|-------------|--------------------|---------------|-----------------|---------------|
| 17 1/2" | 13 3/8" | 48# | 350' | 390 sx | surface |
| 11" | 8 5/8" | 28# | 1600' | 700 sx | surface |
| 7 7/8" | 4 1/2" | 11.6# | 9950' | 1850 sx | 1400' 1100' |
| | | | | | |
| | | | | | |

Describe the proposed program. If this application is to DEEPEN or PLUG BACK, give the data on the present productive zone and proposed new productive zone. Describe the blowout prevention program, if any. Use additional sheets if necessary.

Mud Program - 0-350', mud wt 8.4-9.0 ppg fresh water native spud mud; 350-7500', mud wt 8.4-8.6 ppg fresh water; 7500-9950', mud wt 8.8-9.4 ppg cut brine water w/starch/polymer.

BOPE - diagram attached

Wellbore diagram attached

Directional Plan - preliminary plan attached

H2S - no H2S encountered in immediate area. Will have minimum compliance package set up prior to drilling out of 8 5/8" casing. H2S plan attached.

I hereby certify that the information given above is true and complete to the best of my knowledge and belief

Signature:



Printed name: Ann E. Ritchie

Title: Regulatory Agent

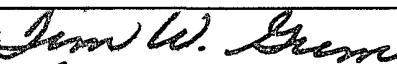
E-mail Address: ann.wtor@gmail.com

Date 12-9-08

Phone: 432 684-6381/683-6565

OIL CONSERVATION DIVISION

Approved by:



Title:



Approval Date:

12/10/08

Expiration Date:

12/19/10

Conditions of Approval Attached

☒ CHANGE IN TIE



DISTRICT I
1625 N. French Dr., Hobbs, NM 88240

DISTRICT II
1301 W. Grand Avenue, Artesia, NM 88210

DISTRICT III
1000 Rio Brazos Rd., Aztec, NM 87410

DISTRICT IV
1220 S. St. Francis Dr., Santa Fe, NM 87505

State of New Mexico
Energy, Minerals and Natural Resources Department

Form C-102
Revised October 12, 2005

Submit to Appropriate District Office
State Lease - 4 Copies
Fee Lease - 3 Copies

OIL CONSERVATION DIVISION
1220 South St. Francis Dr.
Santa Fe, New Mexico 87505

☐ AMENDED REPORT

WELL LOCATION AND ACREAGE DEDICATION PLAT

| | | |
|-----------------------------------|--|--|
| API Number 30-015-36857 | Pool Code 97658 | Pool Name Lakewood; Morrow (Gas) |
| Property Code 36863 | Property Name LAKEWOOD "33" | Well Number 2 |
| OGRID No. 194266 | Operator Name RUBICON OIL AND GAS, LLC | Elevation 3296' |

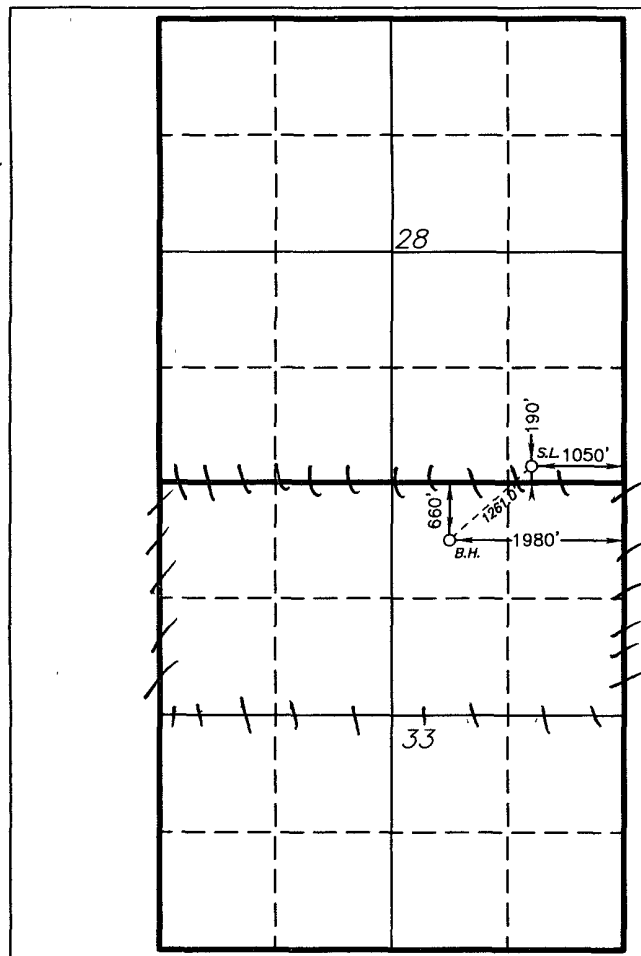
Surface Location

| UL or lot No. | Section | Township | Range | Lot Idn | Feet from the | North/South line | Feet from the | East/West line | County |
|---------------|---------|----------|-------|---------|---------------|------------------|---------------|----------------|--------|
| P | 28 | 19 S | 26 E | | 190 | SOUTH | 1050 | EAST | EDDY |

Bottom Hole Location If Different From Surface

| UL or lot No. | Section | Township | Range | Lot Idn | Feet from the | North/South line | Feet from the | East/West line | County |
|-------------------------------|-----------------|--------------------|-----------|---------|---------------|------------------|---------------|----------------|--------|
| B | 33 | 19 S | 26 E | | 660 | NORTH | 1980 | EAST | EDDY |
| Dedicated Acres 320 | Joint or Infill | Consolidation Code | Order No. | | | | | | |

NO ALLOWABLE WILL BE ASSIGNED TO THIS COMPLETION UNTIL ALL INTERESTS HAVE BEEN CONSOLIDATED
OR A NON-STANDARD UNIT HAS BEEN APPROVED BY THE DIVISION



SURFACE LOCATION
Lat - N32°37'29.11"
Long - W104°22'53.77"
NMSPCE- N 591019.167
E 526476.922
(NAD-83)

BOTTOM HOLE LOCATION
Lat - N32°37'20.73"
Long - W104°23'04.69"
NMSPCE- N 590172.405
E 525542.525
(NAD-83)

SCALE - 1" = 2000'

OPERATOR CERTIFICATION

I hereby certify that the information contained herein is true and complete to the best of my knowledge and belief, and that this organization either owns a working interest or unleased mineral interest in the land including the proposed bottom hole location pursuant to a contract with an owner of such a mineral or working interest, or to a voluntary pooling agreement or a compulsory pooling order heretofore entered by the division.

Signature *HAL LEE* **Date** **12-9-08**
Printed Name **HAL LEE**

SURVEYOR CERTIFICATION

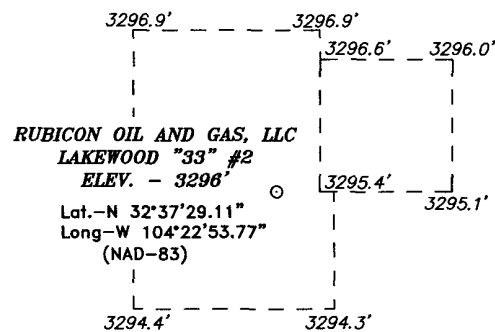
I hereby certify that the well location shown on this plat was plotted from field notes of actual surveys made by me or under my supervision, and that the same is true and correct to the best of my belief.

Date Surveyed **JULY 14, 2008**
Signature *GARY L. JONES*
Professional Surveyor **7977**
W.D. **12-9-08**

Certificate No. **Gary L. Jones 7977**

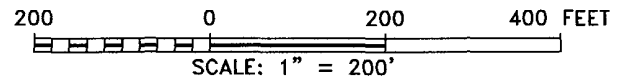
Basin Surveys

SECTION 28, TOWNSHIP 19 SOUTH, RANGE 26 EAST, N.M.P.M.,
EDDY COUNTY, NEW MEXICO.



Directions to Location:

FROM THE JUNCTION OF HWY 285 AND CO. RD. 31;
GO NORTH 0.7 MILES TO PROPOSED LEASE ROAD.



BASIN SURVEYS P.O. BOX 1786-HOBBS, NEW MEXICO

W.O. Number: 19182 Drawn By: J. SMALL

Date: 11-19-2008 Disk: JMS 19182

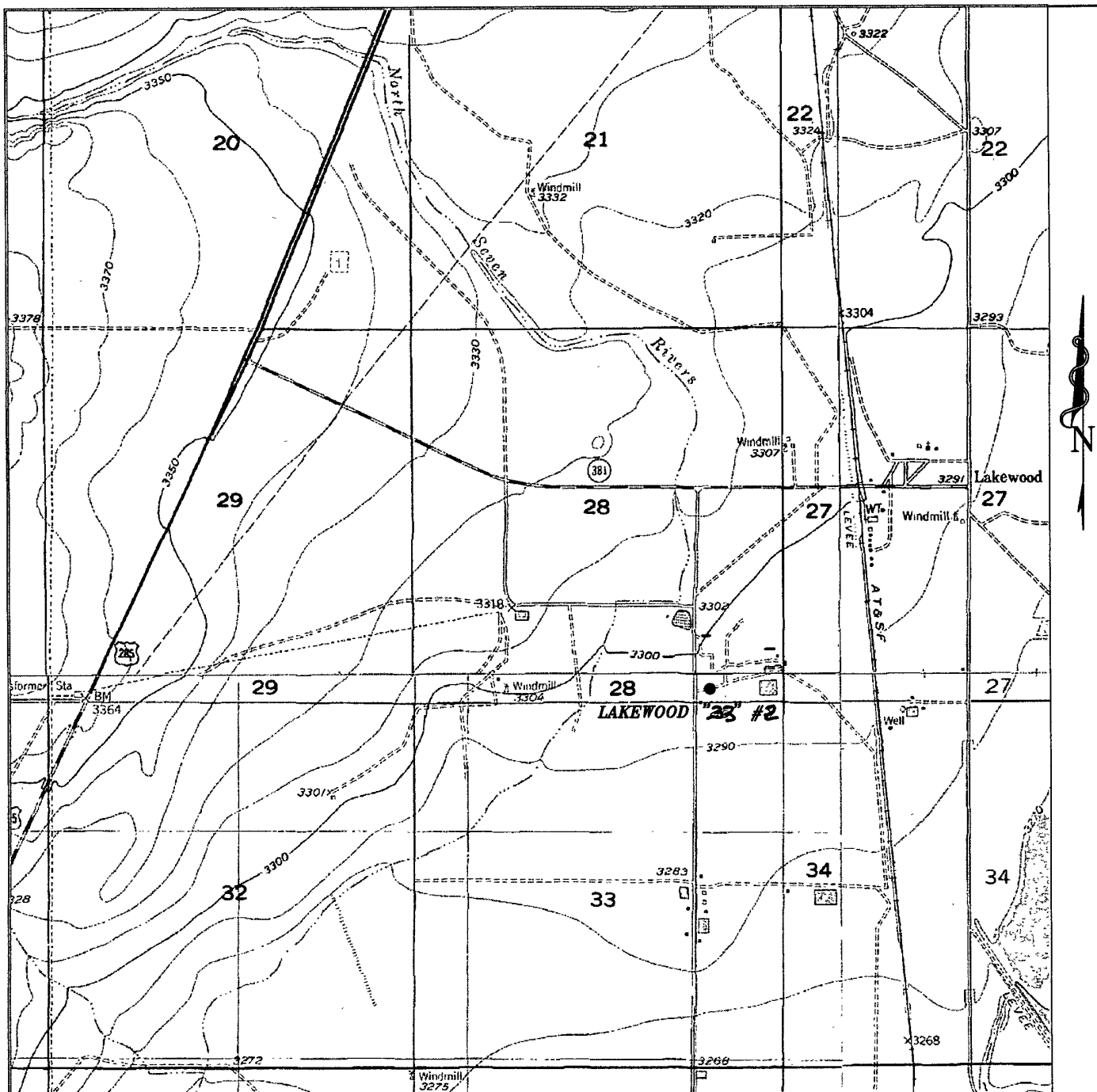
RUBICON OIL AND GAS, LLC

REF: LAKEWOOD "33" #2 / WELL PAD TOPO

THE LAKEWOOD "33" #2 LOCATED 190'
FROM THE SOUTH LINE AND 1050' FROM THE EAST LINE OF
SECTION 28, TOWNSHIP 19 SOUTH, RANGE 26 EAST,
N.M.P.M., EDDY COUNTY, NEW MEXICO.

Survey Date: VARIES

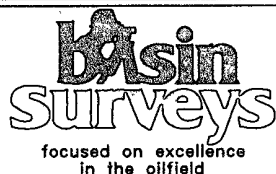
Sheet 1 of 1 Sheets



LAKEWOOD "33" #2

Located 190' FSL and 1050' FEL

Section 28, Township 19 South, Range 26 East,
N.M.P.M., Eddy County, New Mexico.



P.O. Box 1786
1120 N. West County Rd.
Hobbs, New Mexico 88241
(575) 393-7316 - Office
(575) 392-2206 - Fax
basinsurveys.com

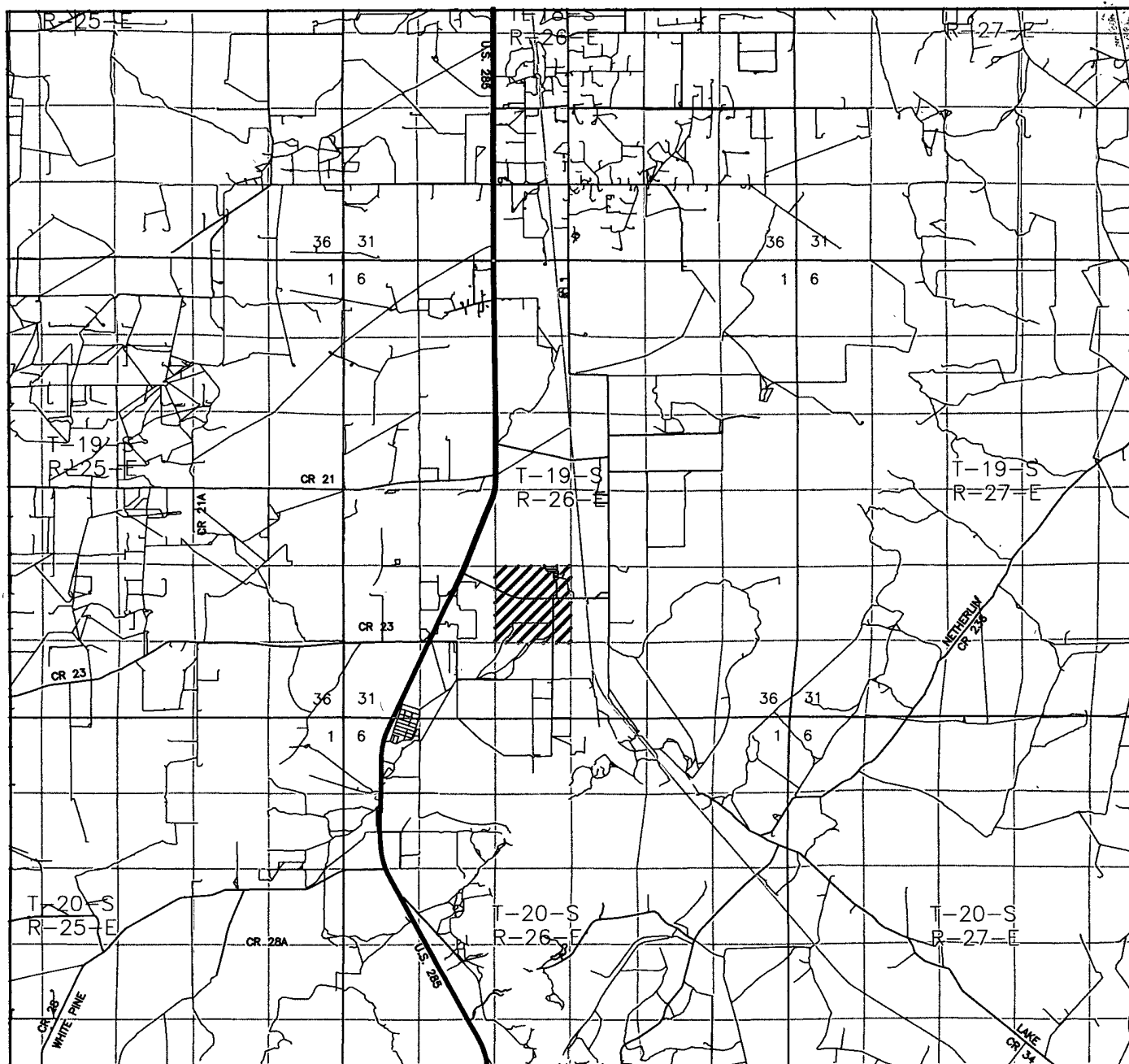
W.O. Number: JMS 19182

Survey Date: VARIES

Scale: 1" = 2000'

Date: 11-19-2008

**RUBICON OIL
AND GAS, LLC**



LAKEWOOD "33" #2

Located 190' FSL and 1050' FEL

Section 28, Township 19 South, Range 26 East,
N.M.P.M., Eddy County, New Mexico.



P.O. Box 1786
1120 N. West County Rd.
Hobbs, New Mexico 88241
(575) 393-7316 - Office
(575) 392-2206 - Fax
basinsurveys.com

W.O. Number: JMS 19182

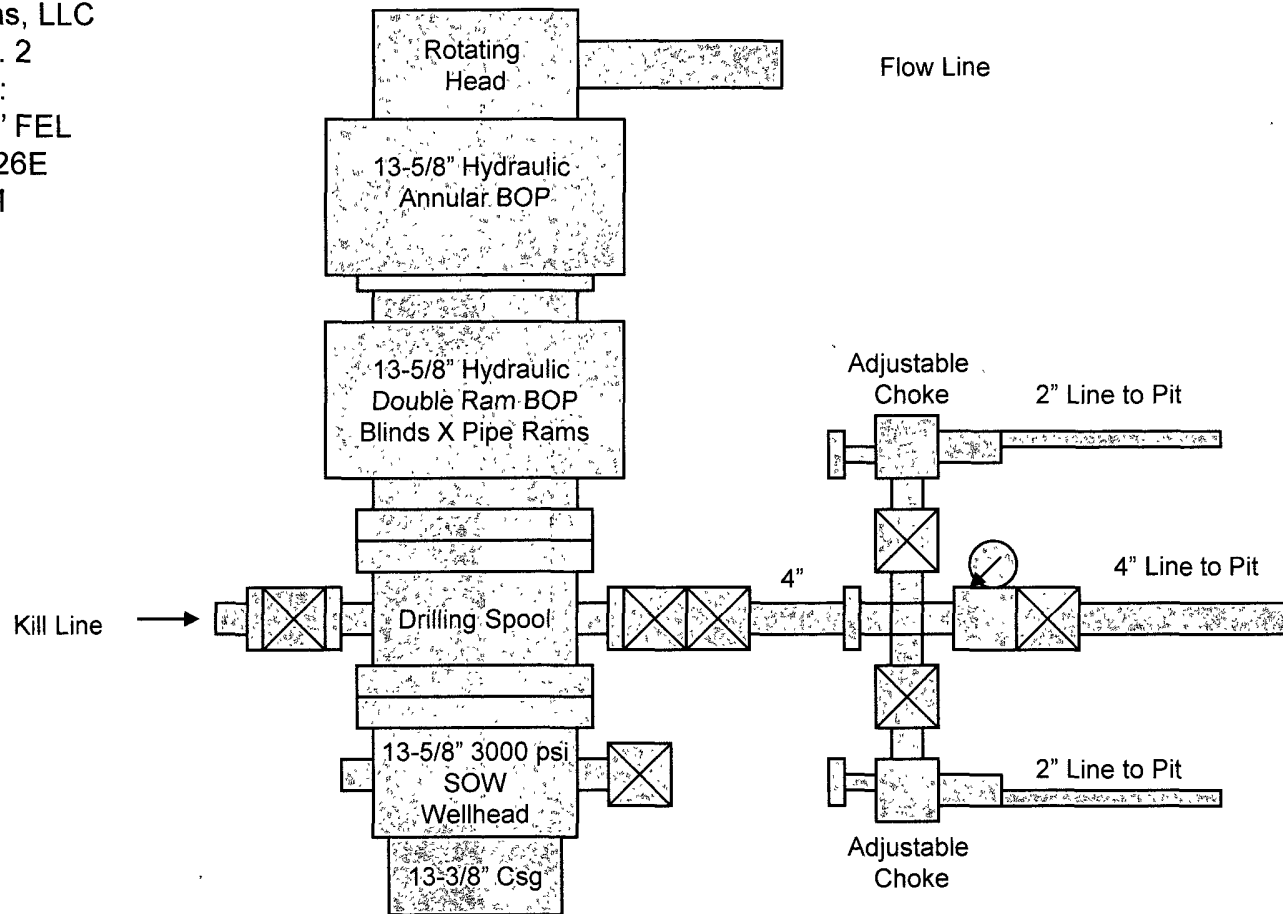
Survey Date: VARIES

Scale: 1" = 2000'

Date: 11-19-2008

**RUBICON OIL
AND GAS, LLC**

Rubicon Oil & Gas, LLC
Lakewood 33 No. 2
Surface Location:
190' FSL & 1050" FEL
Sec 28, T19S, R26E
Eddy County, NM



3000 psi Working Pressure
BOPE Configuration
And Choke Manifold

Exhibit "___"

Surface Location:
190' FSL & 1050' FEL
Sec. 28, T19S, R26E, UL P

Rubicon Oil & Gas, LLC
Lakewood Prospect

KB: TBD'
GL: 3296'

Bottom Hole Location:
660' FNL & 1980' FEL
Sec 33, T19S, R26E, UL B

Lakewood 28-2
Eddy County, New Mexico
Proposed Wellbore
30-015-XXXX

Prod:
TD'd:
Spud: 1/2009

Cameron 5k 7-1/16" Wellhead

Bit Size: 17-1/2" drilled to 350'
8.4-8.6 MW, 32+ Vis, FW Spud Mud

13-3/8" 48ppf H40 @ 350' w/ Cmt 390sks. C 2% CC
Circ to surface.

Bit Size: 11" drilled to 1600'
8.4-8.8 MW, 28 vis, FW w/ LCM sweeps for seepage

TOC planned 1400'.

8-5/8" 28# J55 @ 1604' CMT w/ 100 sks Thix +10% Calseal
14.1ppg, 1.32 ft3 yld, + 350sks. C Interfill Lite 11.9 ppg, 2.1ft3/sk
yld w/ 1/8# polyflake + 250 sks C 14.8 ppg, 1.26 ft3/sk yield w/
2%CC. Circ to surface.

Bit Size: 7-7/8" drilled to 9,950'
1600'-7500' 8.4-8.6 MW FW & sweeps
7500'-9950' 8.8-9.4 MW cutbrine salt gel & Starch

Directional Plan: Build 2°/100 1700' MD, to 10.3°
Hold 2215' 10.3° to 9261', Drop 2°/100 to vertical to
TD 10060' MD.

San Andres ~1050'

Yeso ~2850'
Wolfcamp ~6850'

Strawn ~ 8,350'
Atoka ~ 9,050'
Morrow ~9,200'
Morrow Clastics ~9500'
TD Miss ~ 9750'

DV @ ~6000'

4-1/2" 11.60# HCP-110 LTC 9,950' w/ Davis Lynch 778 MC
stage tool @ 6000'.

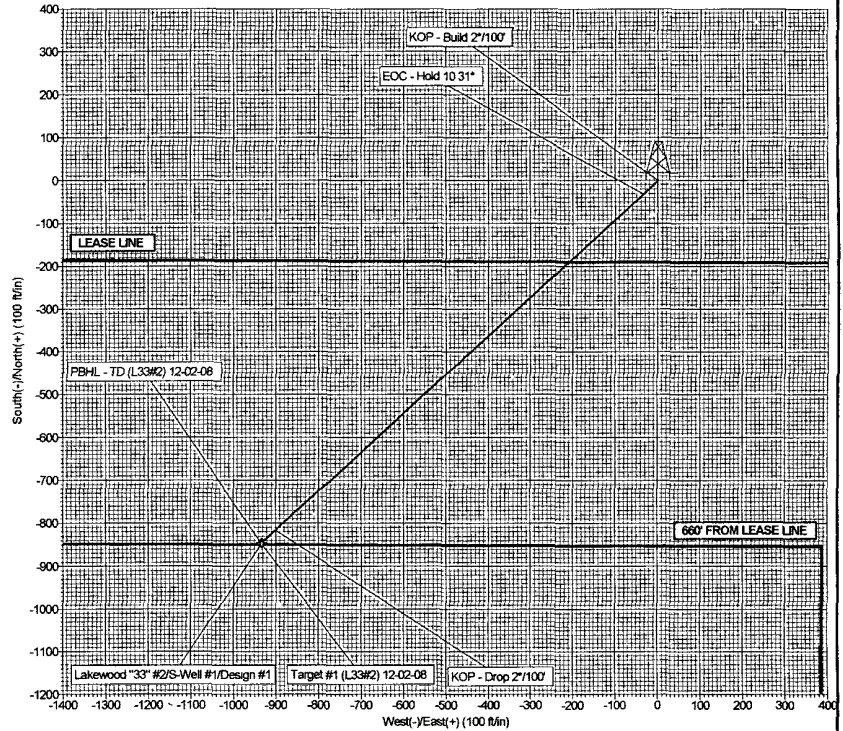
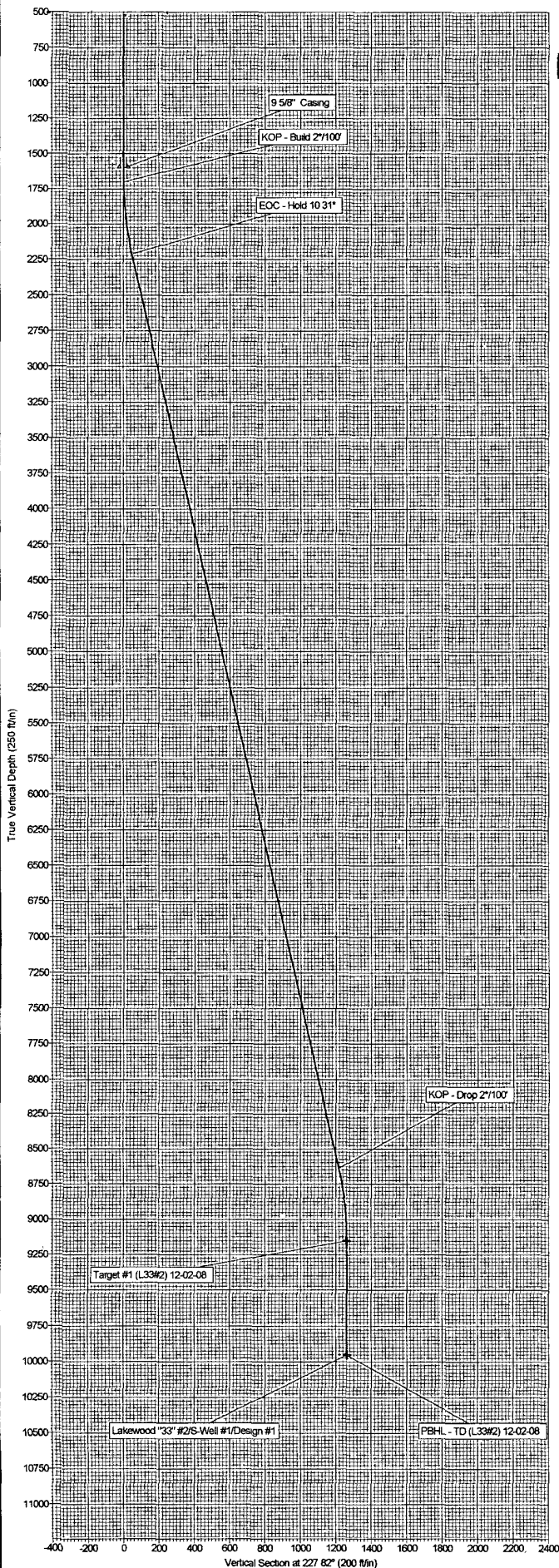
- 1) Cement 9960' to 6000' 475 sks Lite premium w/ .6% Halad 5,
5# salt, 1/2# phenoseal+(1.99 ft3/yld, 12.7ppg) 400 sks Super H
w/ .5% Halad 4, .4% CFR-3, 3# salt, .2% HR 5. (1.73ft3/yld,
13ppg)
- 2) Cement 5,982' to Surface 725 sks Premium plus lite w/ 5# salt,
.6% Halad 9, 1/8# polyflake (12.7ppg, 2.01ft3/yld)+ 100 sks
Premium plus neat. (14.8ppg, 1.32ft3/yld)

PBTD (FC): ~9,850' TD: ~9,950' TVD (10,061'MD)

Rubicon Oil & Gas, LLC.



Project Eddy Co., New Mexico (Nad 83)
 Site Lakewood "33" #2
 Well Lakewood "33" #2
 Wellbore S-Well #1
 Design Design #1

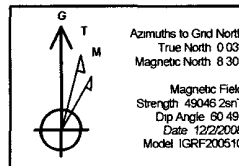


| SECTION DETAILS | | | | | | | | | | |
|-----------------|----------|-------|--------|---------|---------|---------|------|--------|---------|----------------------------|
| Sec | MD | Inc | Azi | TVD | +N-S | +E-W | DLog | TFace | VSec | Target |
| 1 | 0.00 | 0.00 | 0.00 | 0.00 | 0.00 | 0.00 | 0.00 | 0.00 | 0.00 | |
| 2 | 1700.00 | 0.00 | 0.00 | 1700.00 | 0.00 | 0.00 | 0.00 | 0.00 | 0.00 | |
| 3 | 2215.41 | 10.31 | 227.82 | 2212.63 | -31.05 | -34.26 | 2.00 | 227.82 | 46.24 | |
| 4 | 8745.54 | 10.31 | 227.82 | 8637.37 | -815.71 | -800.13 | 0.00 | 0.00 | 1214.76 | |
| 5 | 9260.95 | 0.00 | 0.00 | 9150.00 | -846.76 | -934.40 | 2.00 | 180.00 | 1260.99 | Target #1 (L33#2) 12-02-08 |
| 6 | 10060.95 | 0.00 | 0.00 | 9950.00 | -846.76 | -934.40 | 0.00 | 0.00 | 1260.99 | PBHL - TD (L33#2) 12-02-08 |

| ANNOTATIONS | | | |
|-------------|---------|---------------------|--|
| TVD | MD | Annotation | |
| 1700.00 | 1700.00 | KOP - Build 2°/100' | |
| 2212.63 | 2215.41 | EOC - Hold 10 31" | |
| 8637.37 | 8745.54 | KOP - Drop 2°/100' | |

| WELLBORE TARGET DETAILS | | | | |
|----------------------------|---------|---------|---------|-------|
| Name | TVD | +N-S | +E-W | Shape |
| Target #1 (L33#2) 12-02-08 | 9150.00 | -846.76 | -934.40 | Point |
| PBHL - TD (L33#2) 12-02-08 | 9950.00 | -846.76 | -934.40 | Point |

| WELL DETAILS Lakewood "33" #2 | | | | | |
|--------------------------------------|------|-----------|-----------|------------------|-------------------|
| Ground Level | | | | | |
| 3296.00 | | | | | |
| WELL @ 3316.008 (Original Well Elev) | | | | | |
| +N-S | +E-W | Northing | Easting | Latitude | Longitude |
| 0.00 | 0.00 | 591019.17 | 526476.92 | 32° 37' 29.109 N | 104° 22' 53.770 W |



| PROJECT DETAILS Eddy Co., New Mexico (Nad 83) | |
|---|---------------------------|
| Geodetic System | US State Plane 1983 |
| Datum | North American Datum 1983 |
| Ellipsoid | GRS 1980 |
| Zone | New Mexico Eastern Zone |
| System Datum | Mean Sea Level |

| Plan Design #1 (Lakewood "33" #2/S-Well #1) | |
|---|-------------------------|
| Created By | Mike Starkey |
| Date | 12/24, December 04 2008 |
| Checked | |
| Date | |
| Reviewed | |
| Date | |
| Approved | |
| Date | |

Hydrogen Sulfide Drilling Operations Plan

For

Rubicon Oil & Gas, LLC

Lakewood 33, Well #2, Sec 28, T19S, R26E

Lakewood Morrow

Eddy County, New Mexico

ONE: Hydrogen Sulfide Training

All personnel, whether regularly assigned, contracted or employed on an unscheduled basis has or will receive training from qualified instructors in the following areas prior to working on the drilling operations on this well:

- The hazards & characteristics of H₂S
- The proper use & maintenance of personal protective equipment and Life support systems;
- The proper use of H₂S detectors, alarms, warning systems, briefing areas, evacuation procedures & prevailing winds; and,
- The proper techniques of first aid and rescue contact procedures

In addition, the supervisory personnel will be trained in the following areas:

- The effects of H₂S on metal components. If high tensile tubulars are to be used, personnel will be trained in their special maintenance requirements.
- Corrective action on shut-in procedures when drilling or reworking a well and blowout prevention and well control procedures.
- The contents and requirements of the H₂S Drilling Operations Plan.

There will be an initial training session just prior to encountering a known or probable H₂S zone (within 3 days or 500') and periodic H₂S and well control drills for all personnel in each crew. The initial training session should include a review of the site specific Drilling Operations Plan. This plan is to be available at the well site.

TWO: H₂S Safety Equipment and Systems

NOTE: All H₂S safety equipment and systems will be installed, tested and operational when drilling reaches a depth of 500 feet above, or three days prior to penetration of a known zone containing or reasonably expected to contain H₂S.

1. Well Control Equipment:
 - Flare line with flare igniter;
 - Choke manifold with one remote hydraulic choke installed;
 - Blind rams & pipe rams to accommodate all pipe sizes with properly sized closing unit;
 - Auxiliary equipment to include an Annular Preventer.

DEC 12 2008

District I

1625 N. French Dr., Hobbs, NM 88240

District II

1301 W. Grand Avenue, Artesia, NM 88210

District III

1000 Rio Brazos Road, Aztec, NM 87410

District IV -

1220 S. St. Francis Dr., Santa Fe, NM 87505

State of New Mexico
Energy Minerals and Natural Resources

OCD-ARTESIA

Form C-101

June 16, 2008

Oil Conservation Division
1220 South St. Francis Dr.
Santa Fe, NM 87505

Submit to appropriate District Office

☐ AMENDED REPORT

APPLICATION FOR PERMIT TO DRILL, RE-ENTER, DEEPEN, PLUGBACK, OR ADD A ZONE

| | | |
|--|-------------------------------------|-------------------------------|
| Operator Name and Address Rubicon Oil & Gas, LLC 508 W. Wall St., Suite 500, Midland, TX 79701 | | OGRID Number 194266 |
| | | API Number 30- 15 |
| Property Code | Property Name Lakewood 33 | Well No 2 |
| Proposed Pool 1 Lakewood, Morrow (gas) | | Proposed Pool 2 |

7 Surface Location

| | | | | | | | | | |
|--------------------------|----------------------|------------------------|---------------------|---------|------------------------------|----------------------------------|-------------------------------|-------------------------------|-----------------------|
| UL or lot no P | Section 28 | Township 19S | Range 26E | Lot Idn | Feet from the 190' | North/South line South | Feet from the 1050' | East/West line East | County Eddy |
|--------------------------|----------------------|------------------------|---------------------|---------|------------------------------|----------------------------------|-------------------------------|-------------------------------|-----------------------|

8 Proposed Bottom Hole Location If Different From Surface

| | | | | | | | | | |
|--------------------------|----------------------|------------------------|---------------------|---------|-----------------------------|----------------------------------|------------------------------|-------------------------------|-----------------------|
| UL or lot no B | Section 33 | Township 19S | Range 26E | Lot Idn | Feet from the 660 | North/South line North | Feet from the 1980 | East/West line East | County Eddy |
|--------------------------|----------------------|------------------------|---------------------|---------|-----------------------------|----------------------------------|------------------------------|-------------------------------|-----------------------|

Additional Well Information

| | | | | |
|-----------------------------------|--------------------------------|-------------------------------|---------------------------------------|--|
| Work Type Code New Well | Well Type Code Gas | Cable/Rotary Rotary | Lease Type Code Private/Fee | Ground Level Elevation 3296' |
| Multiple No | Proposed Depth 9950' | Formation Morrow | Contractor TBD | Spud Date 01/2009 |

21 Proposed Casing and Cement Program

| Hole Size | Casing Size | Casing weight/foot | Setting Depth | Sacks of Cement | Estimated TOC |
|-----------|-------------|--------------------|---------------|-----------------|---------------|
| 17 1/2" | 13 3/8" | 48# | 350' | 390 sx | surface |
| 11" | 8 5/8" | 28# | 1600' | 700 sx | surface |
| 7 7/8" | 4 1/2" | 11.6# | 9950' | 1850 sx | 1400' |
| | | | | | |

Describe the proposed program. If this application is to DEEPEN or PLUG BACK, give the data on the present productive zone and proposed new productive zone. Describe the blowout prevention program, if any. Use additional sheets if necessary.

Mud Program - 0-350', mud wt 8.4-9.0 ppg fresh water native spud mud; 350-7500', mud wt 8.4-8.6 ppg fresh water; 7500-9950', mud wt 8.8-9.4 ppg cut brine water w/starch/polymer.

BOPE - diagram attached

Wellbore diagram attached

Directional Plan - preliminary plan attached

H2S - no H2S encountered in immediate area. Will have minimum compliance package set up prior to drilling out of 8 5/8" casing. H2S plan plan attached.

I hereby certify that the information given above is true and complete to the best of my knowledge and belief

Signature:



OIL CONSERVATION DIVISION

Approved by:

Printed name: **Ann E. Ritchie**

Title:

Title: **Regulatory Agent**

Approval Date:

Expiration Date:

E-mail Address: **ann.wtor@gmail.com**Date **12-9-08**Phone: **432 684-6381/683-6565**Conditions of Approval Attached ☐

DISTRICT I
1825 N. French Dr., Hobbs, NM 88240

DISTRICT II
1301 W. Grand Avenue, Artesia, NM 88210

DISTRICT III
1000 Rio Brazos Rd., Aztec, NM 87410

DISTRICT IV
1220 S. St. Francis Dr., Santa Fe, NM 87505

State of New Mexico
Energy, Minerals and Natural Resources Department

Form C-102
Revised October 12, 2005

Submit to Appropriate District Office
State Lease - 4 Copies
Fee Lease - 3 Copies

OIL CONSERVATION DIVISION
1220 South St. Francis Dr.
Santa Fe, New Mexico 87505

☐ AMENDED REPORT

WELL LOCATION AND ACREAGE DEDICATION PLAT

| | | |
|-----------------------------|--|--|
| API Number 30-015 | Pool Code 97658 | Pool Name Lakewood; Morrow (Gas) |
| Property Code | Property Name LAKEWOOD "33" | Well Number 2 |
| OGRID No. 194266 | Operator Name RUBICON OIL AND GAS, LLC | Elevation 3296' |

Surface Location

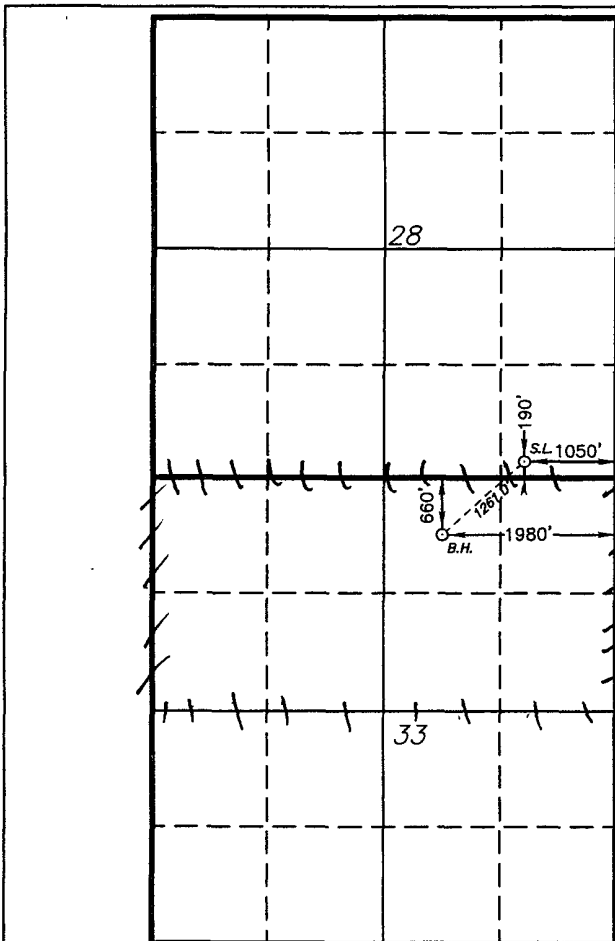
| UL or lot No. | Section | Township | Range | Lot Idn | Feet from the | North/South line | Feet from the | East/West line | County |
|---------------|---------|----------|-------|---------|---------------|------------------|---------------|----------------|--------|
| P | 28 | 19 S | 26 E | | 190 | SOUTH | 1050 | EAST | EDDY |

Bottom Hole Location If Different From Surface

| UL or lot No. | Section | Township | Range | Lot Idn | Feet from the | North/South line | Feet from the | East/West line | County |
|---------------|---------|----------|-------|---------|---------------|------------------|---------------|----------------|--------|
| B | 33 | 19 S | 26 E | | 660 | NORTH | 1980 | EAST | EDDY |

| | | | |
|-------------------------------|-----------------|--------------------|-----------|
| Dedicated Acres 320 | Joint or Infill | Consolidation Code | Order No. |
|-------------------------------|-----------------|--------------------|-----------|

NO ALLOWABLE WILL BE ASSIGNED TO THIS COMPLETION UNTIL ALL INTERESTS HAVE BEEN CONSOLIDATED
OR A NON-STANDARD UNIT HAS BEEN APPROVED BY THE DIVISION



SURFACE LOCATION
Lat - N32°37'29.11"
Long - W104°22'53.77"
NMSPCE- N 591019.167
E 526476.922
(NAD-83)

BOTTOM HOLE LOCATION
Lat - N32°37'20.73"
Long - W104°23'04.69"
NMSPCE- N 590172.405
E 525542.525
(NAD-83)

SCALE - 1" = 2000'

OPERATOR CERTIFICATION

I hereby certify that the information contained herein is true and complete to the best of my knowledge and belief, and that this organization either owns a working interest or unleased mineral interest in the land including the proposed bottom hole location pursuant to a contract with an owner of such a mineral or working interest, or to a voluntary pooling agreement or a compulsory pooling order heretofore entered by the division.

[Signature] **12-9-08**
Signature Date
[Printed Name]
Printed Name

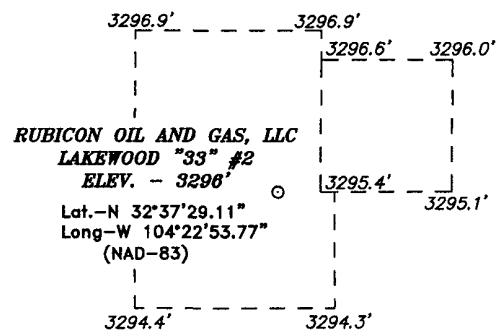
SURVEYOR CERTIFICATION

I hereby certify that the well location shown on this plat was plotted from field notes of actual surveys made by me or under my supervision, and that the same is true and correct to the best of my belief.

JUL 14 2008
Date Surveyed
[Signature]
Signature
Professional Surveyor
7977
182
Certificate No. Gary L. Jones 7977

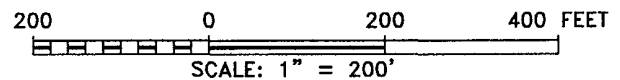
Basin Surveys

SECTION 28, TOWNSHIP 19 SOUTH, RANGE 26 EAST, N.M.P.M.,
EDDY COUNTY, NEW MEXICO.



Directions to Location:

FROM THE JUNCTION OF HWY 285 AND CO. RD. 31;
GO NORTH 0.7 MILES TO PROPOSED LEASE ROAD.



RUBICON OIL AND GAS, LLC

REF: LAKEWOOD "33" #2 / WELL PAD TOPO

THE LAKEWOOD "33" #2 LOCATED 190'
FROM THE SOUTH LINE AND 1050' FROM THE EAST LINE OF
SECTION 28, TOWNSHIP 19 SOUTH, RANGE 26 EAST,
N.M.P.M., EDDY COUNTY, NEW MEXICO.

BASIN SURVEYS P.O. BOX 1786—HOBBS, NEW MEXICO

W.O. Number: 19182

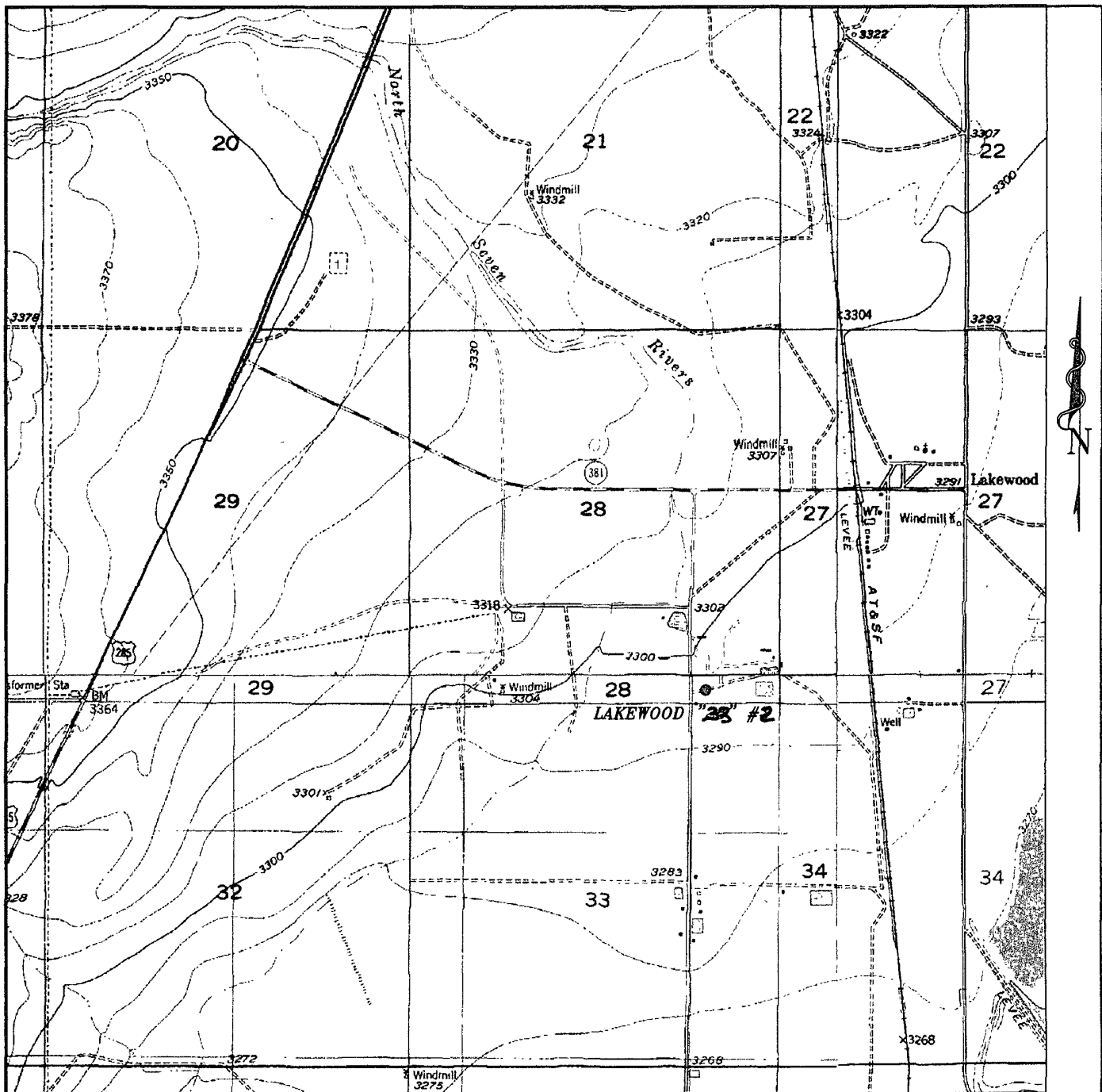
Drawn By: J. SMALL

Date: 11-19-2008

Disk: JMS 19182

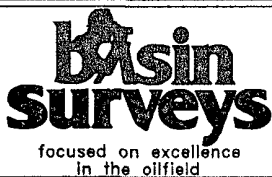
Survey Date: VARIES

Sheet 1 of 1 Sheets



LAKEWOOD "33" #2

Located 190' FSL and 1050' FEL
 Section 28, Township 19 South, Range 26 East,
 N.M.P.M., Eddy County, New Mexico.



P.O. Box 1786
 1120 N. West County Rd.
 Hobbs, New Mexico 88241
 (575) 393-7316 - Office
 (575) 392-2206 - Fax
 basinsurveys.com

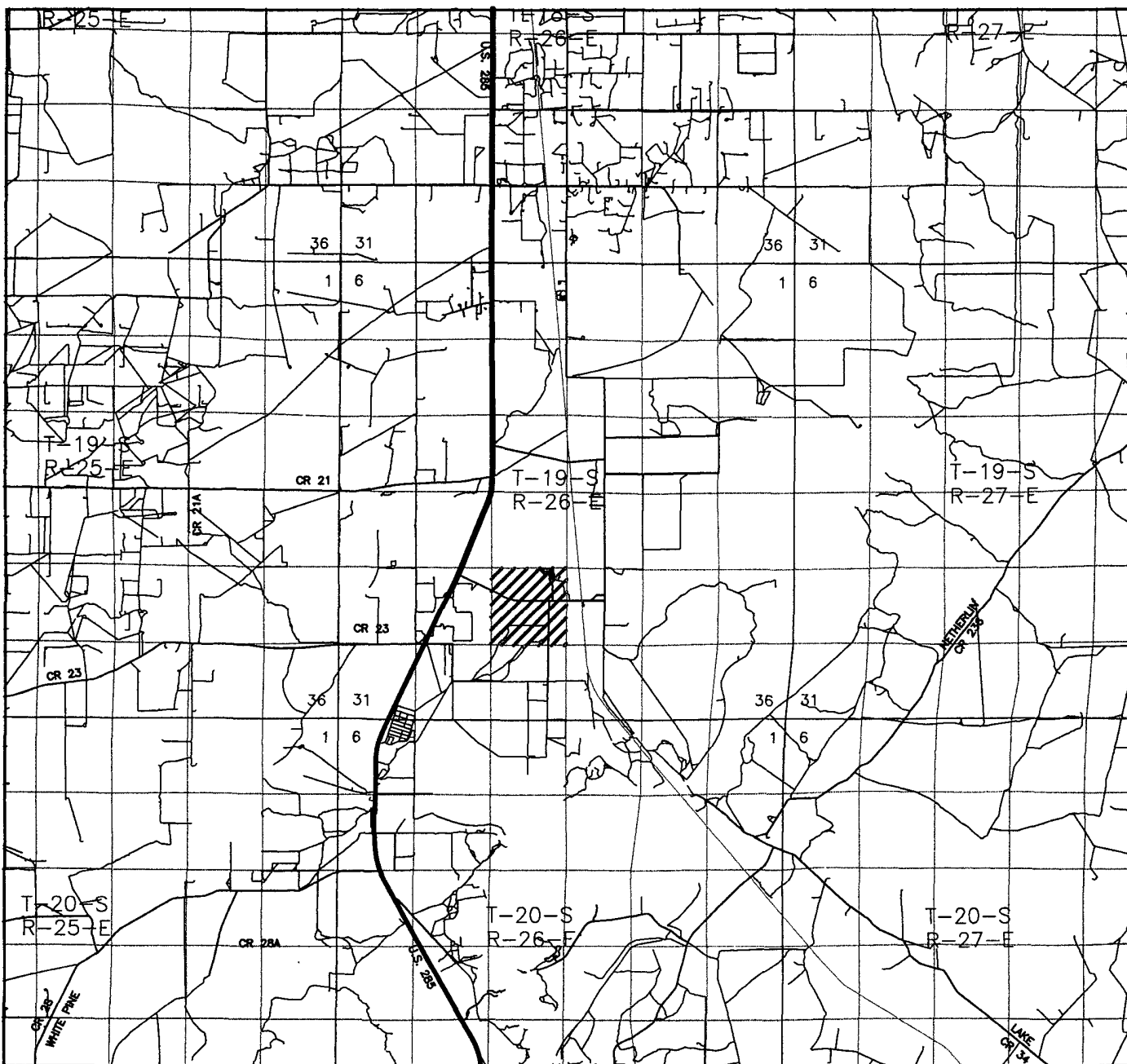
W.O. Number: JMS 19182

Survey Date: VARIES

Scale: 1" = 2000'

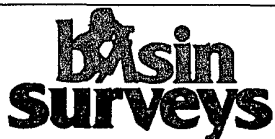
Date: 11-19-2008

**RUBICON OIL
 AND GAS, LLC**



LAKEWOOD "33" #2

Located 190' FSL and 1050' FEL
 Section 28, Township 19 South, Range 26 East,
 N.M.P.M., Eddy County, New Mexico.



focused on excellence
 in the oilfield

P.O. Box 1786
 1120 N. West County Rd.
 Hobbs, New Mexico 88241
 (575) 393-7316 - Office
 (575) 392-2206 - Fax
 basinsurveys.com

W.O. Number: JMS 19182

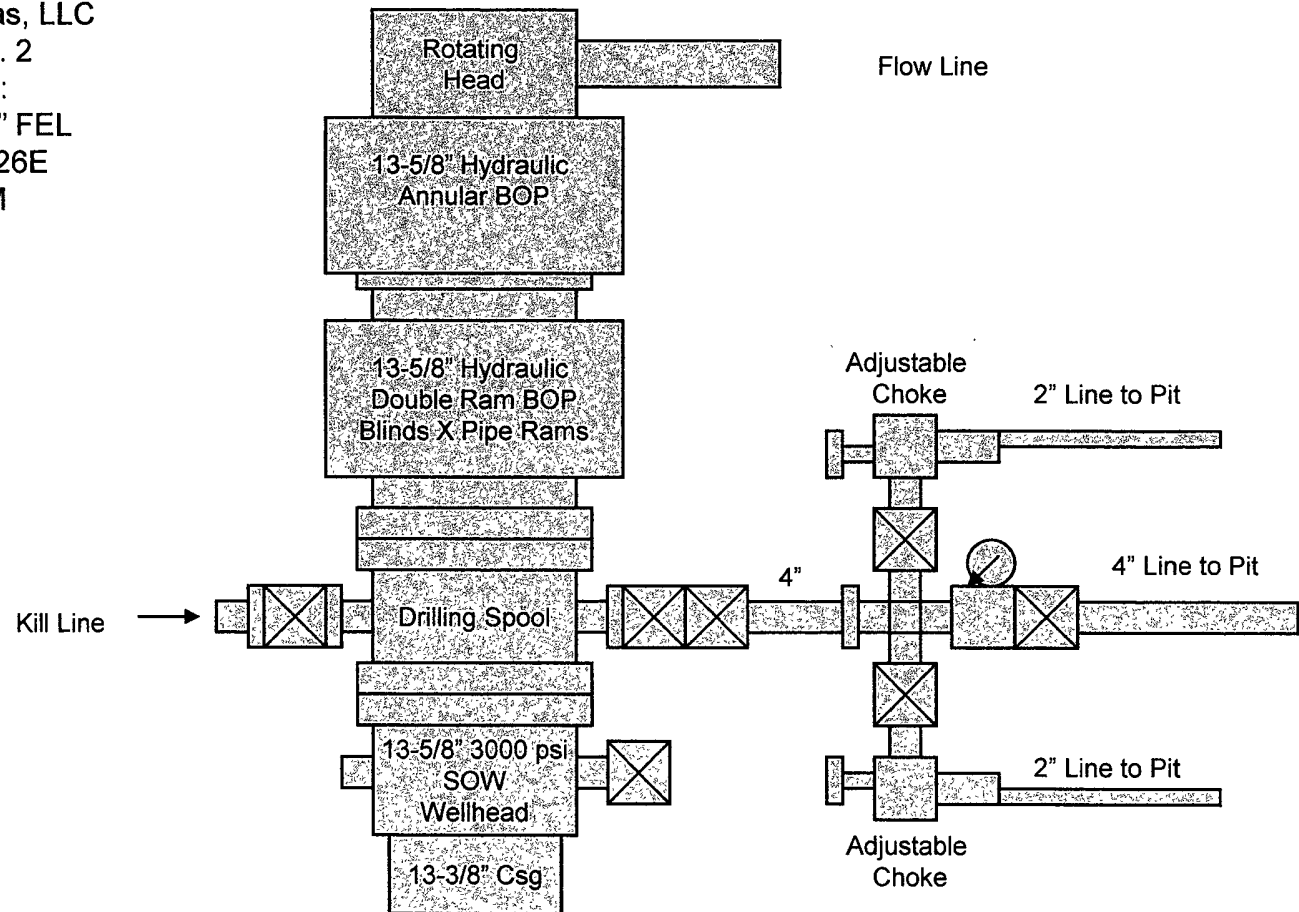
Survey Date: VARIES

Scale: 1" = 2000'

Date: 11-19-2008

**RUBICON OIL
 AND GAS, LLC**

Rubicon Oil & Gas, LLC
Lakewood 33 No. 2
Surface Location:
190' FSL & 1050" FEL
Sec 28, T19S, R26E
Eddy County, NM



3000 psi Working Pressure
BOPE Configuration
And Choke Manifold

Exhibit " ____ "

Surface Location:
190' FSL & 1050' FEL
Sec. 28, T19S, R26E, UL P

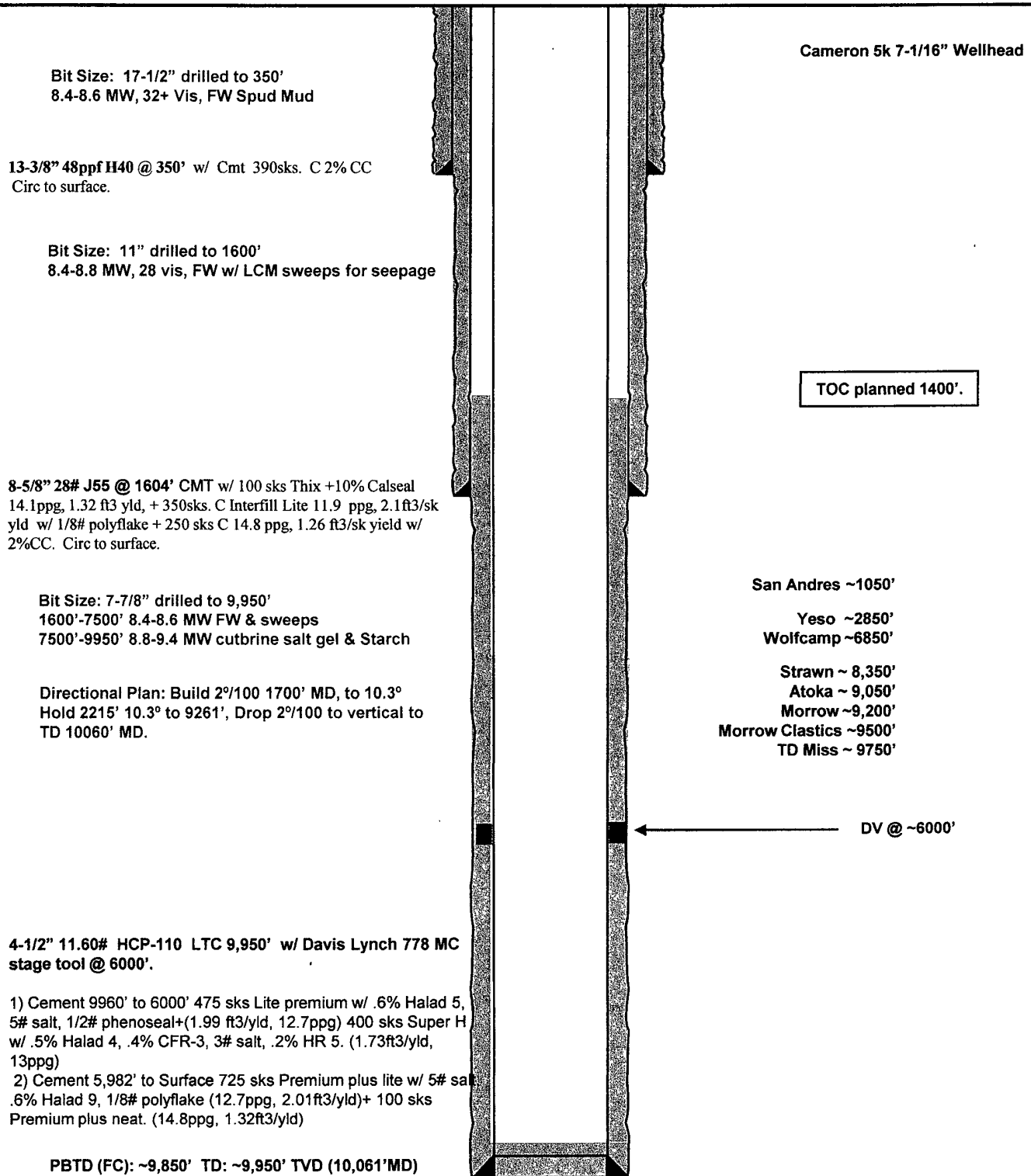
Rubicon Oil & Gas, LLC
Lakewood Prospect

KB: TBD'
GL: 3296'

Bottom Hole Location:
660' FNL & 1980' FEL
Sec 33, T19S, R26E, UL B

Lakewood 28-2
Eddy County, New Mexico
Proposed Wellbore
30-015-XXXX

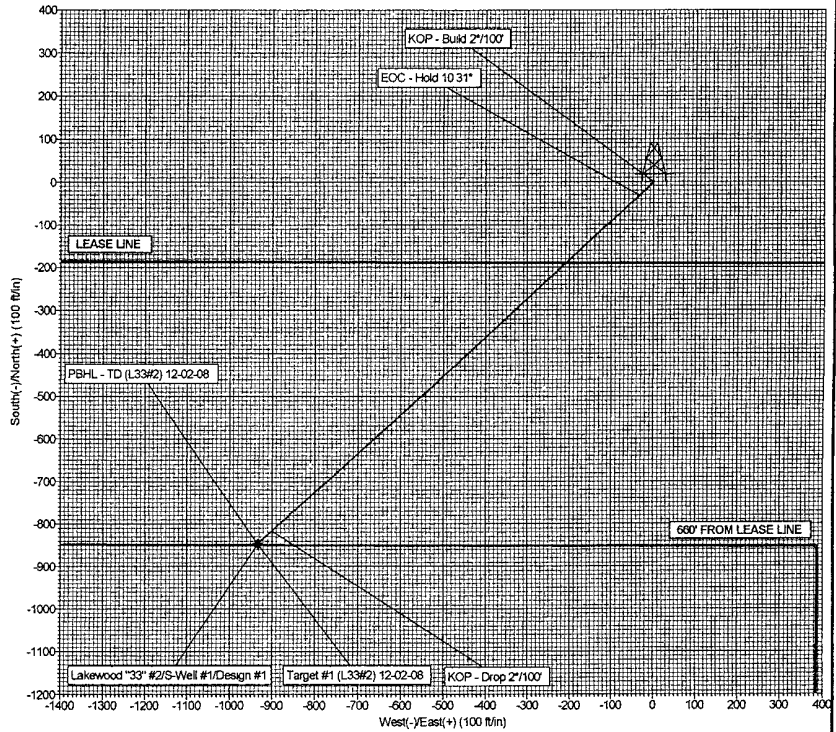
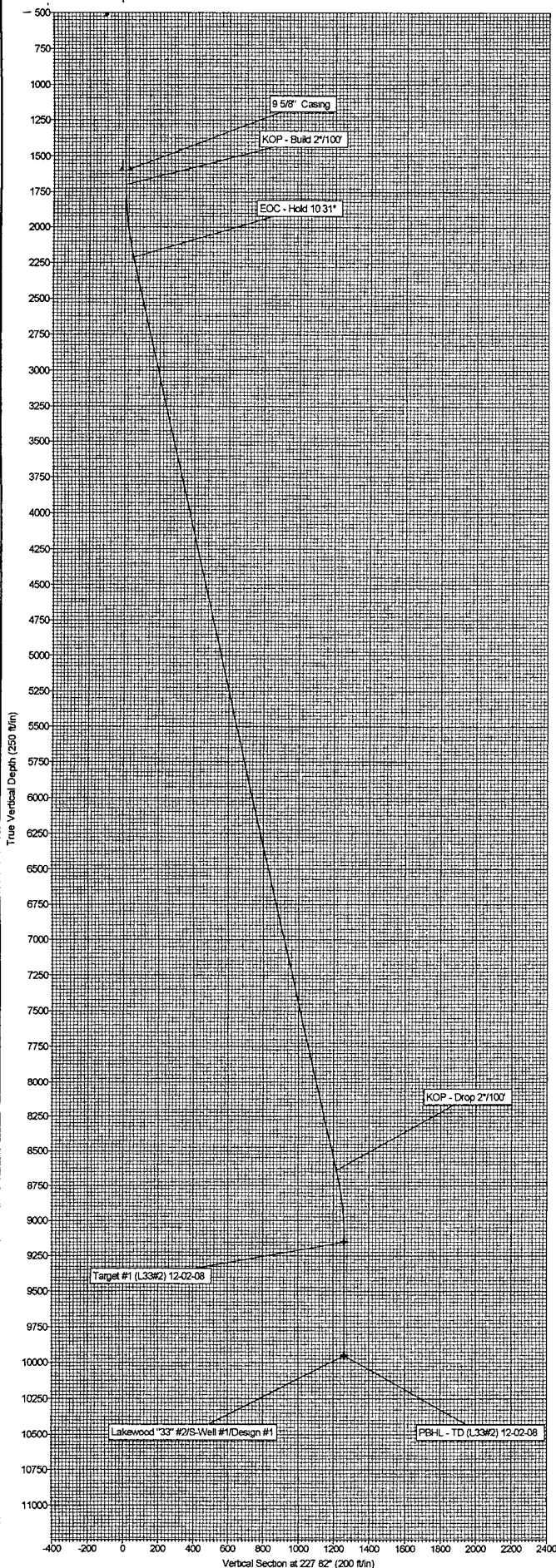
Prod:
TD'd:
Spud: 1/2009



Rubicon Oil & Gas, LLC.



Project Eddy Co., New Mexico (Nad 83)
 Site Lakewood "33" #2
 Well Lakewood "33" #2
 Wellbore S-Well #1
 Design Design #1

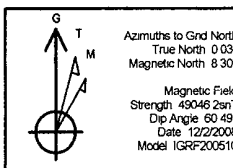


| SECTION DETAILS | | | | | | | | | | |
|-----------------|----------|-------|--------|---------|---------|---------|------|--------|---------|-----------------------------|
| Sec | MD | Inc | Azi | TVD | +N/-S | +E/-W | DLeg | TFace | VSec | Target |
| 1 | 0 00 | 0 00 | 0 00 | 0 00 | 0 00 | 0 00 | 0 00 | 0 00 | 0 00 | |
| 2 | 1700 00 | 0 00 | 0 00 | 1700 00 | 0 00 | 0 00 | 0 00 | 0 00 | 0 00 | |
| 3 | 2215 41 | 10 31 | 227 82 | 2212 63 | -31 05 | -34 26 | 2 00 | 227 82 | 46 24 | |
| 4 | 8745 54 | 10 31 | 227 82 | 8637 37 | -815 71 | -900 13 | 0 00 | 0 00 | 1214 76 | |
| 5 | 9280 95 | 0 00 | 0 00 | 9150 00 | -846 76 | -934 40 | 2 00 | 180 00 | 1250 99 | Target #1 (L33#2) 12-02-08 |
| 6 | 10060 95 | 0 00 | 0 00 | 9950 00 | -846 76 | -934 40 | 0 00 | 0 00 | 1250 99 | PBH-L - TD (L33#2) 12-02-08 |

| ANNOTATIONS | | |
|-------------|---------|---------------------|
| TVD | MD | Annotation |
| 1700 00 | 1700 00 | KOP - Build 2°/100' |
| 2212 63 | 2215 41 | EOC - Hold 10 31" |
| 8637 37 | 8745 54 | KOP - Drop 2°/100' |

| WELLBORE TARGET DETAILS | | | | |
|-----------------------------|---------|---------|---------|-------|
| Name | TVD | +N/-S | +E/-W | Shape |
| Target #1 (L33#2) 12-02-08 | 9150 00 | -846 76 | -934 40 | Point |
| PBH-L - TD (L33#2) 12-02-08 | 9950 00 | -846 76 | -934 40 | Point |

| WELL DETAILS Lakewood "33" #2 | | | | | |
|---------------------------------------|-------|-----------|-----------|------------------|-------------------|
| Ground Level | | | | | |
| 3296 00 | | | | | |
| WELL @ 3316 00ft (Original Well Elev) | | | | | |
| +N/-S | +E/-W | Northing | Easting | Latitude | Longitude |
| 0 00 | 0 00 | 591019 17 | 526476 92 | 32° 37' 29 109 N | 104° 22' 53 770 W |



| PROJECT DETAILS Eddy Co., New Mexico (Nad 83) | |
|---|---------------------------|
| Geodetic System | US State Plane 1983 |
| Datum | North American Datum 1983 |
| Ellipsoid | GRS 1980 |
| Zone | New Mexico Eastern Zone |
| System Datum | Mean Sea Level |

| Plan Design #1 (Lakewood "33" #2/S-Well #1) | |
|---|-------------------------|
| Created By | Mike Starkey |
| Date | 12/24, December 04 2008 |
| Checked | |
| Date | |
| Reviewed | |
| Date | |
| Approved | |
| Date | |

Hydrogen Sulfide Drilling Operations Plan

For

Rubicon Oil & Gas, LLC

Lakewood 33, Well #2, Sec 28, T19S, R26E

Lakewood Morrow

Eddy County, New Mexico

ONE: Hydrogen Sulfide Training

All personnel, whether regularly assigned, contracted or employed on an unscheduled basis has or will receive training from qualified instructors in the following areas prior to working on the drilling operations on this well:

- The hazards & characteristics of H₂S

- The proper use & maintenance of personal protective equipment and Life support systems;

- The proper use of H₂S detectors, alarms, warning systems, briefing areas, evacuation procedures & prevailing winds; and,

- The proper techniques of first aid and rescue contact procedures

In addition, the supervisory personnel will be trained in the following areas:

- The effects of H₂S on metal components. If high tensile tubulars are to be used, personnel will be trained in their special maintenance requirements.

- Corrective action and shut-in procedures when drilling or reworking a well and blowout prevention and well control procedures.

- The contents and requirements of the H₂S Drilling Operations Plan.

There will be an initial training session just prior to encountering a known or probable H₂S zone (within 3 days or 500') and periodic H₂S and well control drills for all personnel in each crew. The initial training session should include a review of the site specific Drilling Operations Plan. This plan is to be available at the well site.

TWO: H₂S Safety Equipment and Systems

NOTE: All H₂S safety equipment and systems will be installed, tested and operational when drilling reaches a depth of 500 feet above, or three days prior to penetration of a known zone containing or reasonably expected to contain H₂S.

1. Well Control Equipment:

- Flare line with flare igniter;

- Choke manifold with one remote hydraulic choke installed;

- Blind rams & pipe rams to accommodate all pipe sizes with properly sized closing unit;

- Auxiliary equipment to include an Annular Preventer.